

AP-SPS180

SIP Paging Server

High-performance Next Generation SIP Paging Server Solution



Multi-Site Paging Management Service



AddPac

AddPac Technology

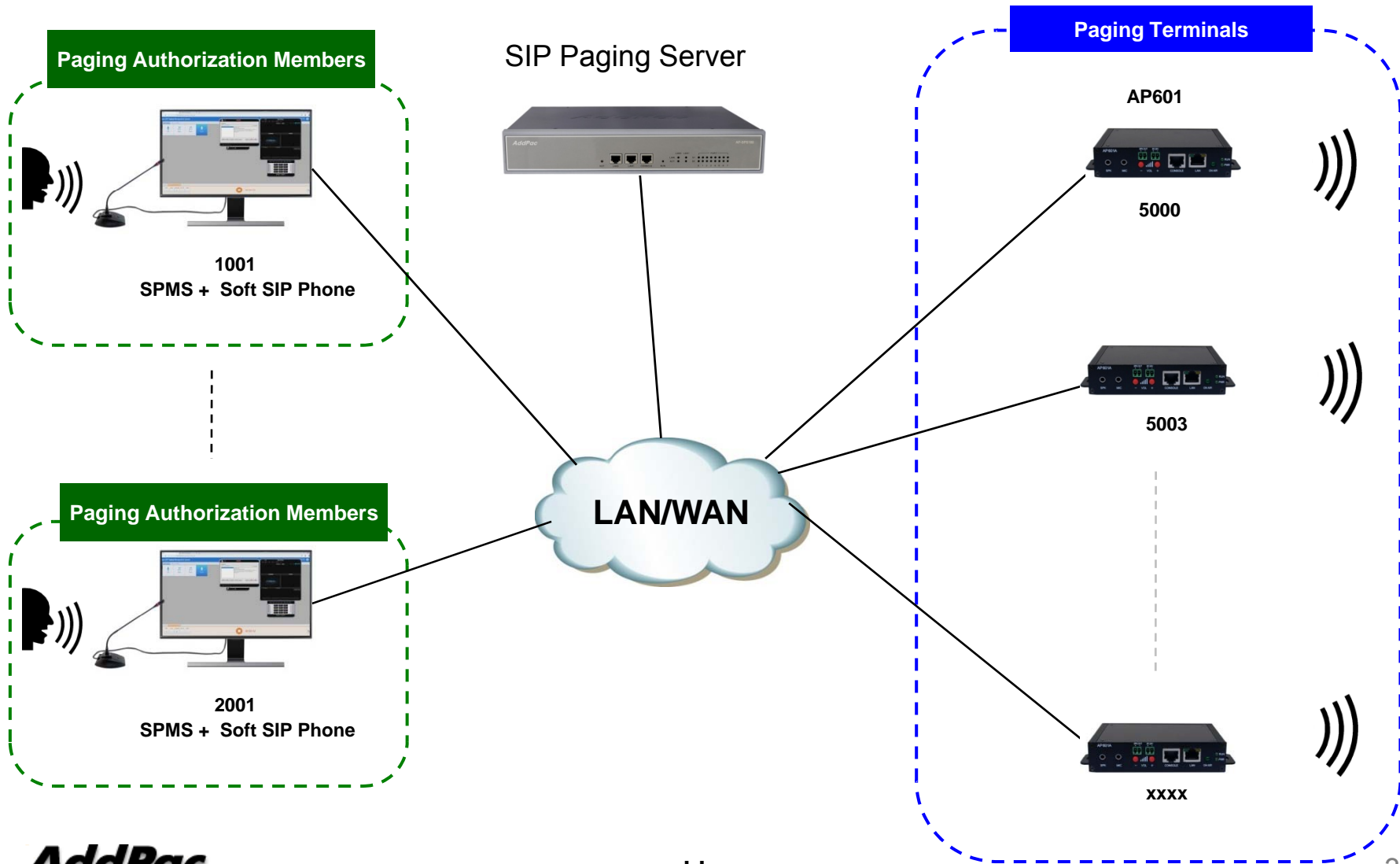
Sales and Marketing

www.addpac.com

Contents

- Multi-Site Paging Source Service Network Diagram
- SIP Paging Terminals & Solution
- SIP Paging Client Software
- SIP Paging Server Service Diagram
- Paging Scenario & Service Features
- SIP Paging Management Software

Multi-Site SIP Paging Source Service



SIP Paging Terminal & Solution

SIP Paging Management S/W	SIP Paging Servers	SIP Paging Terminals	SIP Phone for Paging Service
 <p>AP-SPMS</p>	 <p>AP-SPS180</p>	 <p>AP601</p>	 <p>AP-IP300 + AP-PT20x2</p>
		 <p>AP602</p>	 <p>AP-IP120 + AP-PT20x2</p>
			 <p>Soft SIP Phone</p>

AP-SPS180

SIP Paging Server



Product Overview

AP-SP180 SIP Paging Server

- SIP Application Server, Proxy, Registrar and Location Server
- SIP Paging Server Service
- Standalone SIP Paging & Broadcasting Service Support
- Legacy IP-PBX Clone Mode Support (Trunk, etc)
- RTP(Real-time Transport Protocol) Support for Unicast and Multicast Paging Service
- Internal & External RTP Routing Service Support
- Web based SPMS(SIP Paging Management Software) Support
- Various Paging Service Mode Support (Ex : Scheduled Broadcasting, etc)
- Various SIP Paging Terminal Support (SIP Paging Terminal, SIP Phone, etc) beside AddPac Terminal
- Paging Service Support via SIP IP Phone
- Paging Service Support via AddPac Smart Communicator (PC based AddPac Multimedia Manager)
- TTS Paging Service Support (Option)
- High Performance RISC Architecture
- Powerful Network Protocols (PPPoE, DHCP, Static Routing, etc)
- **Private IP Address Support (ex : Wifi AP Environment)**
- Firmware Upgradeable Architecture

Hardware Specification

AP-SPS180 SIP Paging Server

- RISC Microprocessor Computing Power
- Main Chassis
 - Network Interface
 - Two(2) 10/100Mbps Fast Ethernet
 - One(1) RS-232C Console (RJ45)
 - Two(2) VoIP Module Slots for FXS, FXO etc

Hardware Specification

AP-SPS180 SIP Paging Server

Front Side



LAN1 (10/100Mbps)

LAN0(10/100Mbps)

Console Port

www.addpac.com

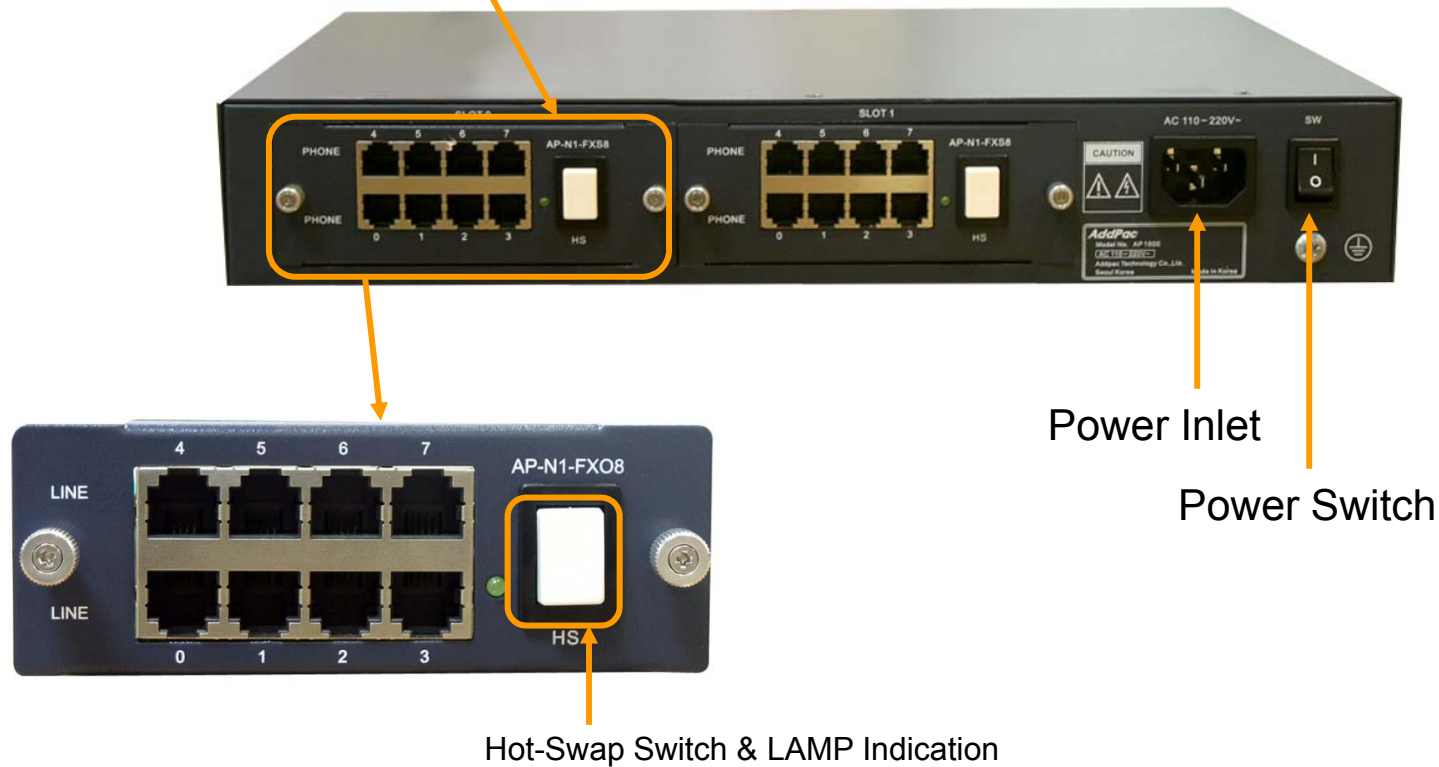
AddPac

Hardware Specification

AP-SPS180 SIP Paging Server

Back Side





PSTN Interface Module



Hardware Specification

AP-SPS180 SIP Paging Server

PSTN Interface Module (Option)

AP-N1-FXS8	 A black 8-port FXS voice processing module with RJ11 ports labeled 0-7 and a central switch labeled AP-N1-FXS8.	8-Port FXS Voice Processing Module (8 x RJ11)
AP-N1-FXO8	 A black 8-port FXO voice processing module with RJ11 ports labeled 0-7 and a central switch labeled AP-N1-FXO8.	8-Port FXO Voice Processing Module (8 x RJ11)
AP-N1-FXO4S4	 A black 8-port voice processing module with RJ11 ports labeled 0-7 and a central switch labeled AP-N1-FXO8.	4-Port FXO and 4-Port FXS Voice Processing Module (8 x RJ11)
AP-N1-E1T1	 A black 1-port VoIP digital E1/T1 interface module with an RJ45 port and a central switch labeled AP-N1-E1T1.	1-Port VoIP Digital E1/T1 Interface Module(1xRJ45)



AP601 & AP602 SIP Paging Terminals



	AP601	AP602
		
VoIP Paging Protocol	SIP, Proprietary Protocol	SIP, Proprietary Protocol
VoIP Codecs	G.722(16Khz),G.711,G.726,G.729A,etc	G.722(16Khz),G.711,G.726,G.729A,etc
Built-in AMP. (Option)	40watt at 8ohm (Terminal Block, SPK+-Connector)	40watt at 8ohm (Terminal Block, SPK+-Connector)
LAN Port	One(1) 10/100Mbps Fast Ethernet (1 x RJ45)	Two(2) 10/100Mbps Fast Ethernet (2 x RJ45)
Volume Control	UP, DOWN Button	UP, DOWN Button
ON-AIR LED	Support	Support
Audio Interface	3.5mm SPK Output, MIC. Input	3.5mm SPK Output, MIC. Input
RS232C Port	Support	Support
I/O Interface	N/A	Alarm Input 1Port, Relay Output 2Port
I2C Interface	N/A	Support

AP601

SIP Paging Terminal



Product Overview

AP601 SIP Paging Terminal

- SIP based Voice Broadcasting Terminal Solution
- Hardware Architecture for Voice Broadcasting Terminal Service
- Remote Broadcasting Service at terminal side
- High Quality Voice Codec Support (High Quality Codec, G.711, G.726, etc)
- RTP/UDP Protocol Support
- Unicast and Multicast Broadcasting Scheme
- SPMS (SIP Paging Management Software) Support
- One(1) channel SPK/MIC Port
- Volume Control Button Support (Up, Down)
- Option (AP601A) : AMP. Built-in
- High-Quality Audio/Voice Service
- Firmware Upgradeable Architecture
- Broadcasting Solution with Outstanding Network Service Capability
- External Power Supply

Hardware Specification

AP601 SIP Paging Terminal

RISC
CPU

High-end
DSP

- RISC Microprocessor Computing Power
- High-end Programmable DSP Hardware Architecture
- High Quality Audio Encoding/Decoding Service
- One(1) 10/100Mbps Fast Ethernet (RJ45)
- One(1) RS-232C Interface (RJ45)
- SPK/MIC Audio Interface Support
- Volume Control Button Support (Up, Down)
- External Power Supply Support
- Option : 30Watt Digital AMP. Built-in (AP601A)

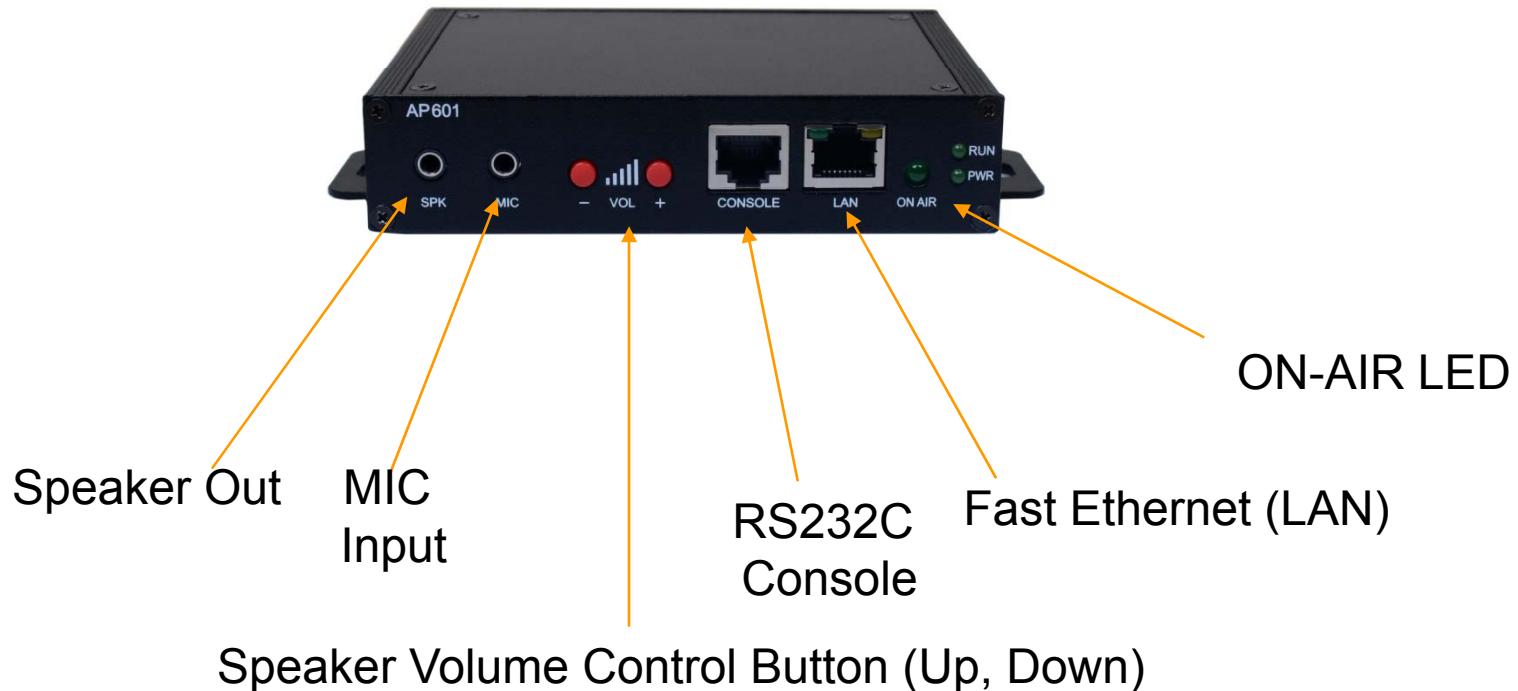
Hardware Specification

AP601 SIP Paging Terminal

RISC
CPU

High-end
DSP

Front Side



Hardware Specification

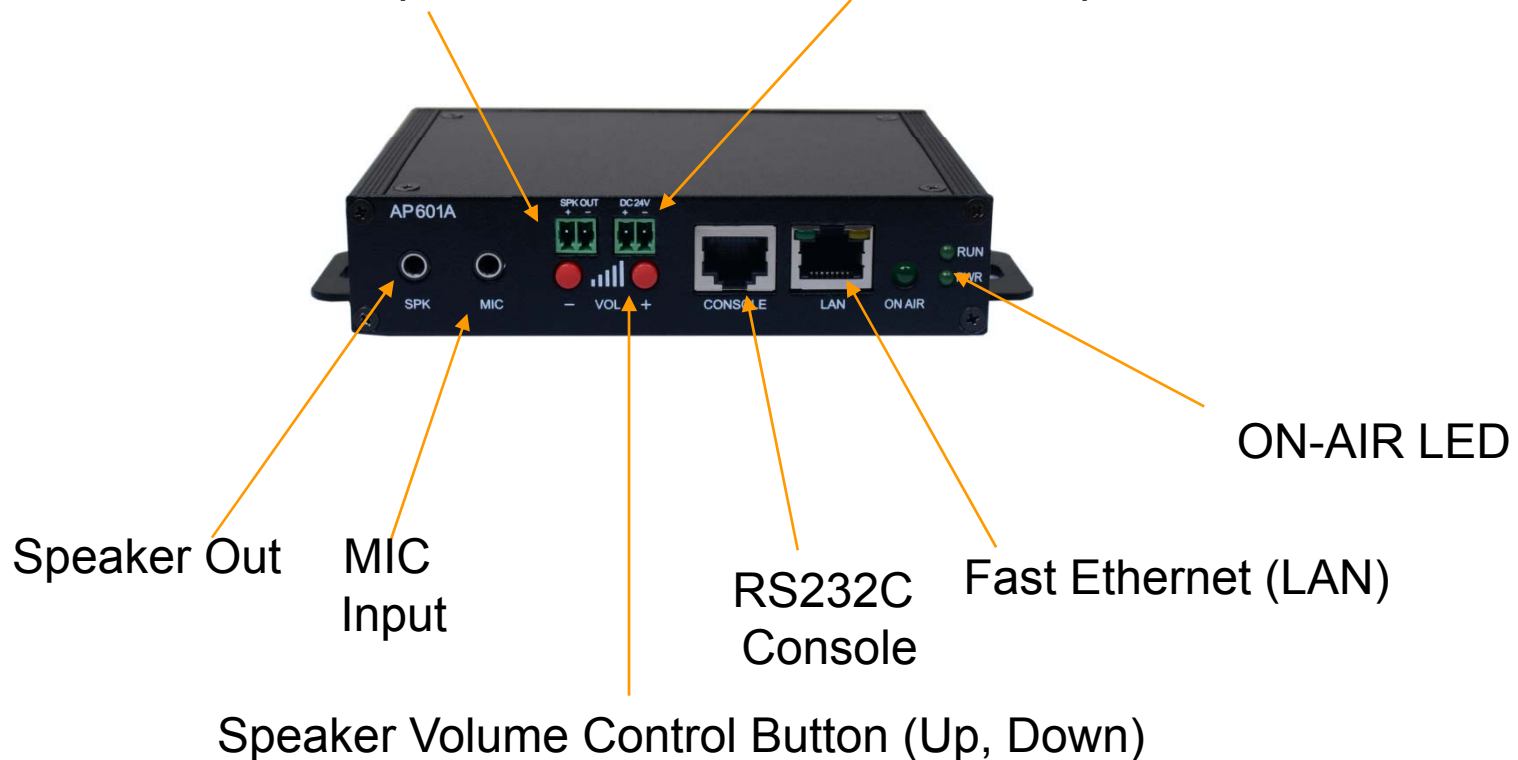
AP601 SIP Paging Terminal

RISC
CPU

High-end
DSP

Front Side (AMP. Built-In Model : AP601A)

AMP. Speaker Out 24V DC Power Input for Internal AMP.



Hardware Specification

AP601 SIP Paging Terminal

RISC
CPU

High-end
DSP

Back Side



External Power
Supply Adaptor

Power Switch

AP-SPCS SIP Paging Client Software



Product Overview

AP-SPCS SIP Paging Client Software

- SIP Paging Client Terminal Solution
- MS-Window based SIP Paging Source Terminal
- Various Voice (G.711,G.726, etc) Support
- Click to Dialing Support
- High Quality G.722(16KHz) Voice Codec Support (Option)
- Various TTS Engine Support (Window TTS Engine Default, 3'rd Party TTS Engine Support)
- TTS Speed, Volume, Paging Start/Stop Guard Margin, Pre Listening
- High-performance Video, Audio, and Voice Service
- Firmware Upgradeable Architecture
- Voice Paging Solution with Outstanding Network Service Capability

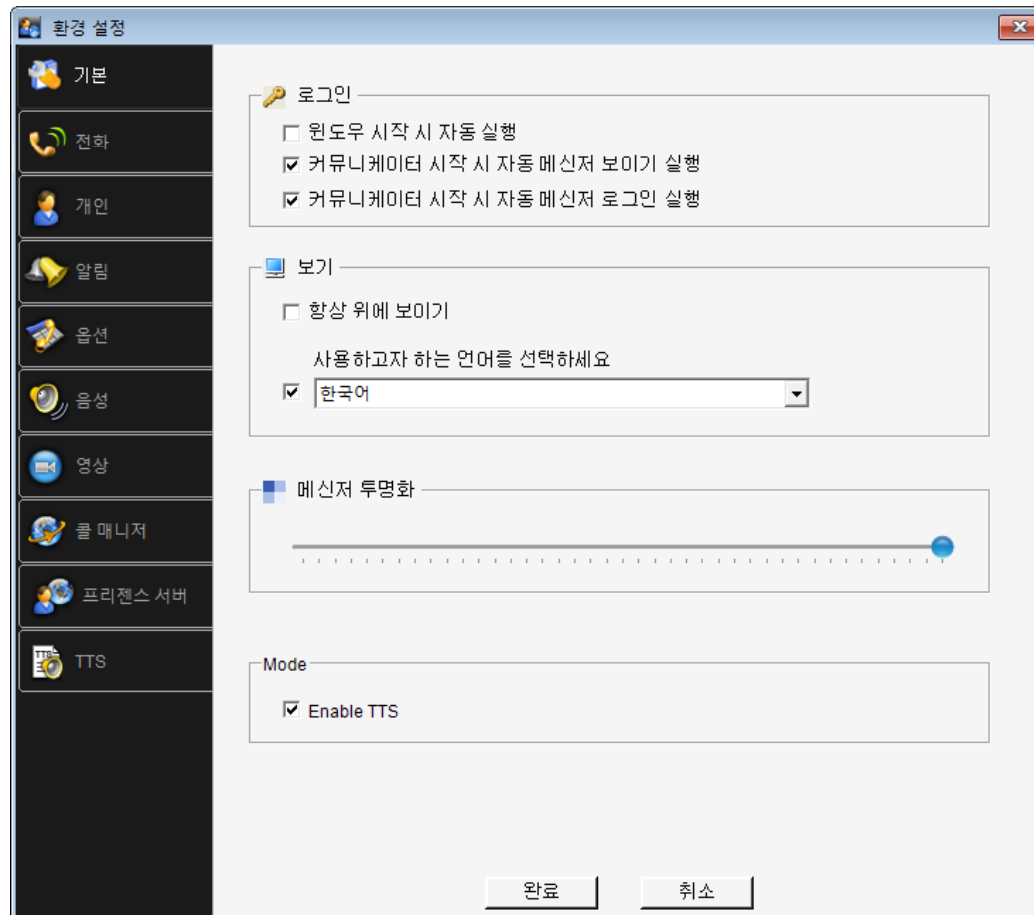


SPCS OSD Overview for TTS Paging Service

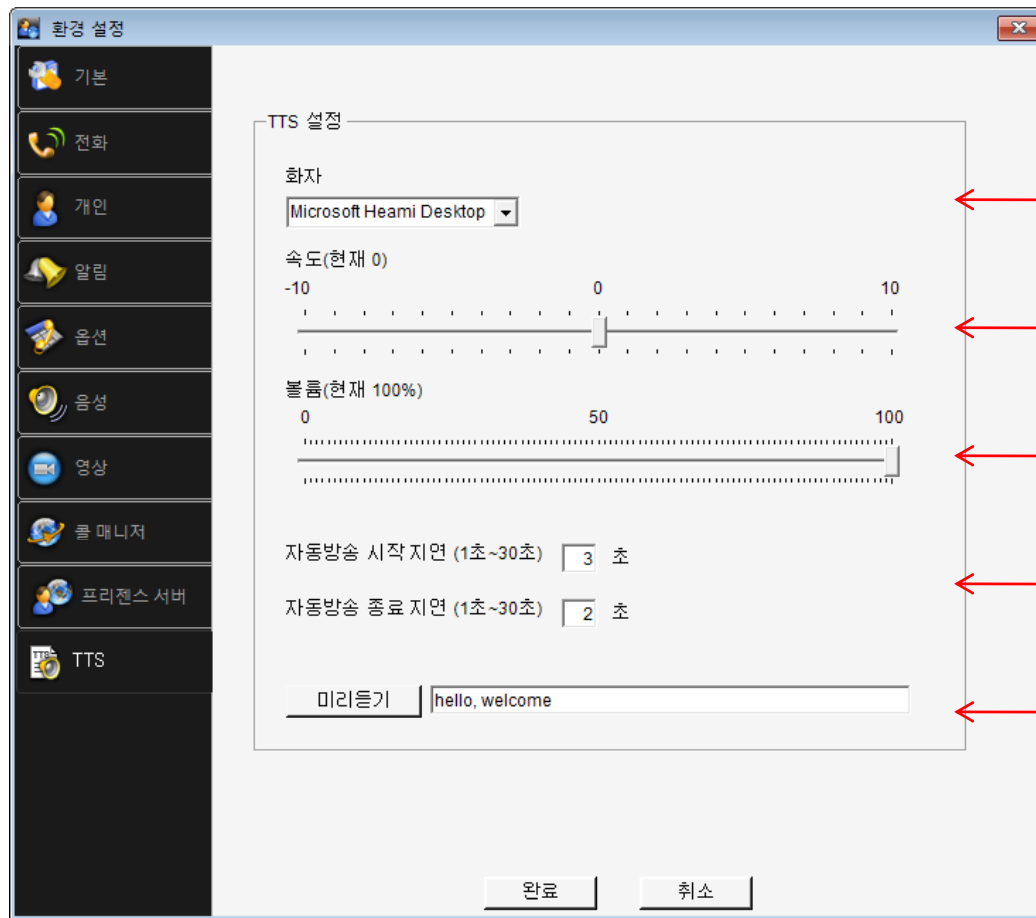
Configuration for TTS Service



Basic Config. : TTS Service Enable



TTS Configuration Menu



← TTS Engine Select

← TTS Speed

← TTS Volume

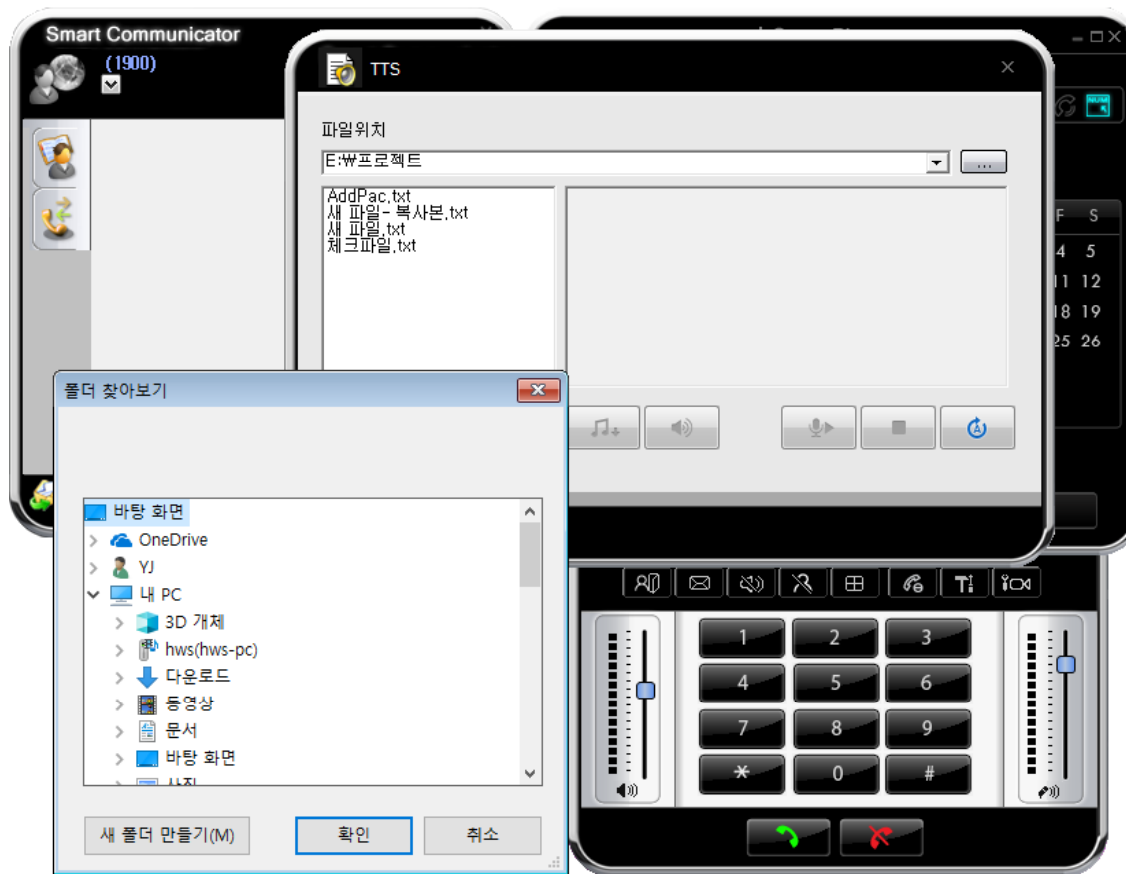
← Automatic Paging
Guard Margin

← Pre-TTS Listening

Session Config. for TTS Paging



Session Config. for TTS Paging



TTS Paging ON-AIR

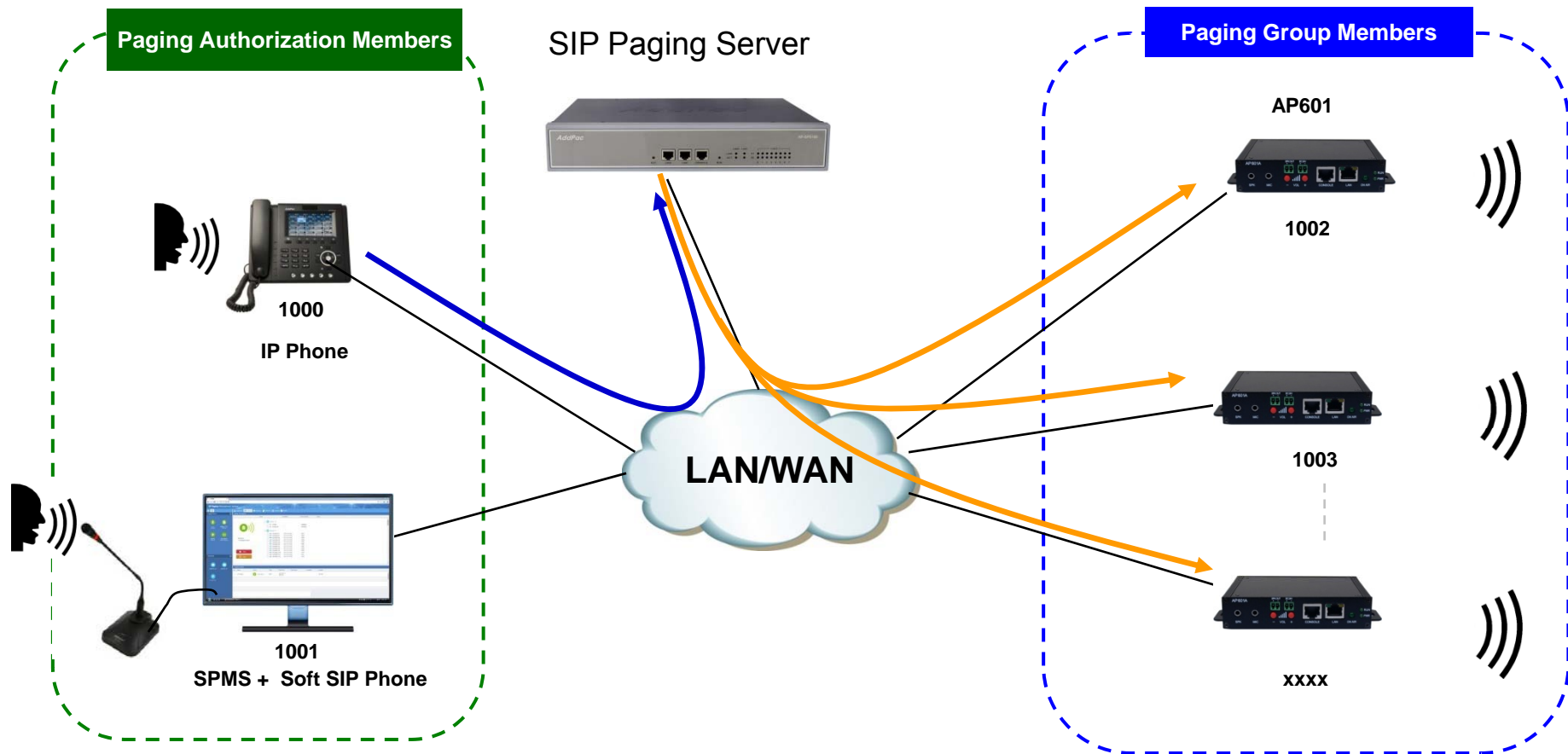


TTS Service Control Menu Bar

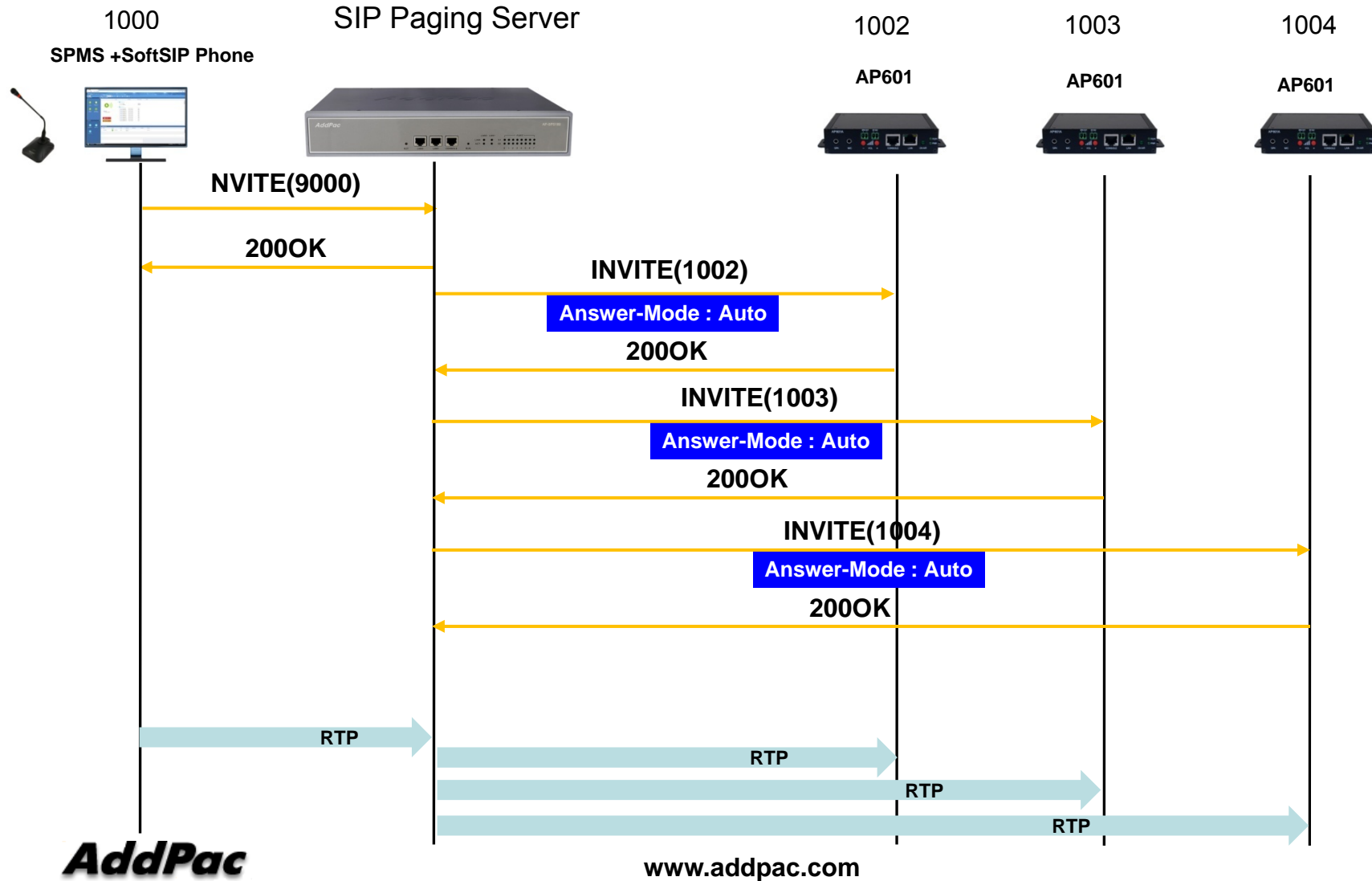



SIP Paging Server Service Diagram

SIP Broadcasting Network Diagram



Paging Group Signaling Flow (Standalone Mode)



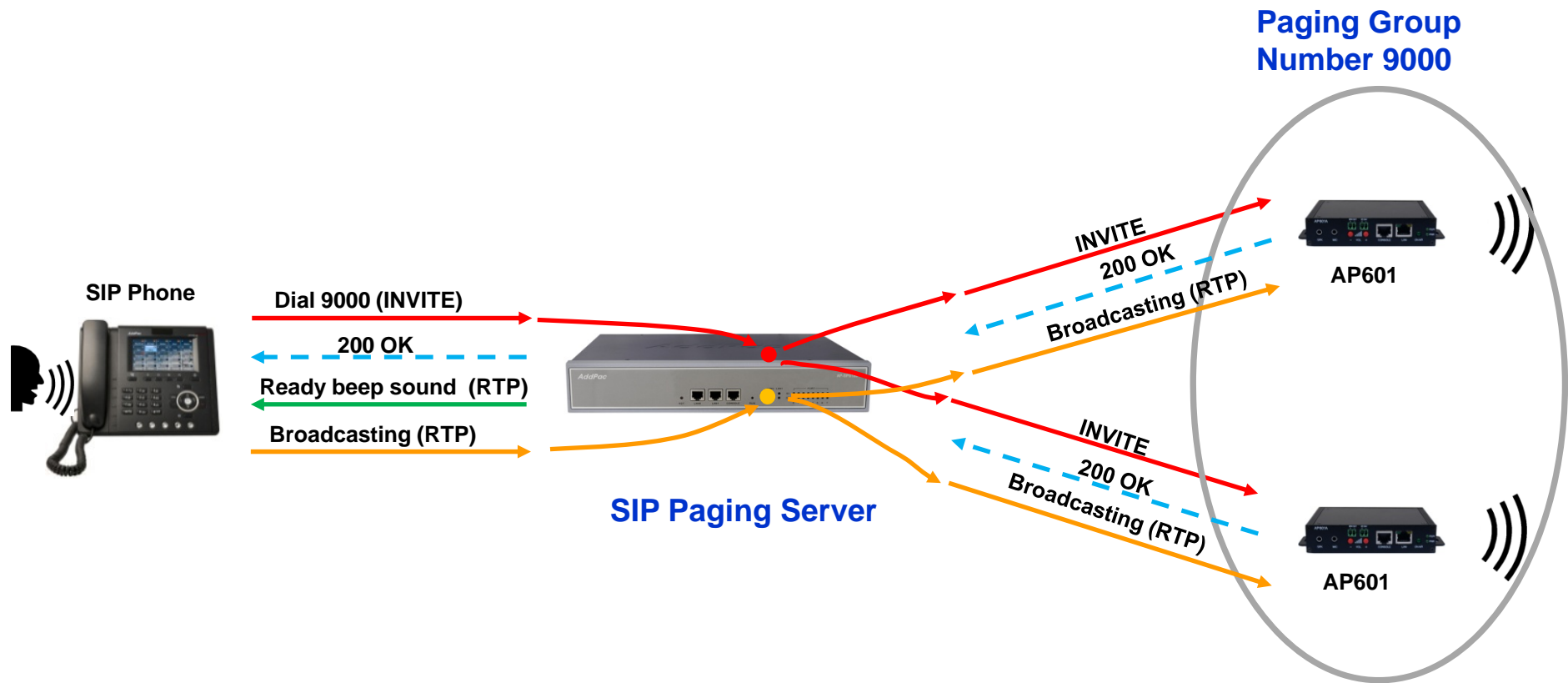


Paging Scenarios & Service Features

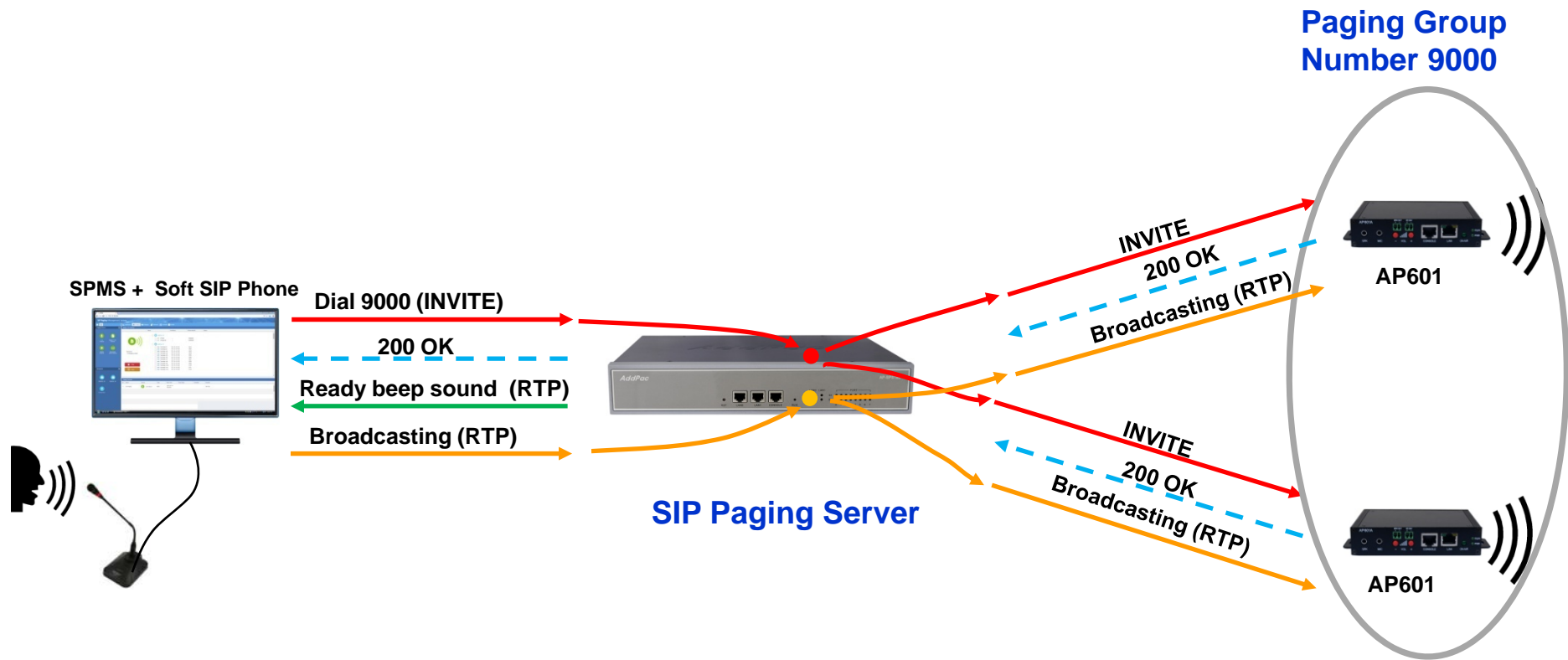
Paging Scenarios

- SIP Phone Initiated Real-Time Paging
- Soft SIP Phone Initiated Real-Time Paging
- SIP Phone Initiated Real-Time Paging via PBX
- SIP Phone Initiated Real-Time Paging to PBX
- SIP Paging to and from PSTN/Mobile Network
- Web Controller Initiated Real-Time Paging
- Add-hoc Paging with IVR
- Recorded Paging with Simultaneous Casting
- Recorded Paging with Individual Casting
- TTS (Text to Speech) Paging
- Audio and SMS Paging by HTTP API
- Scheduled Paging

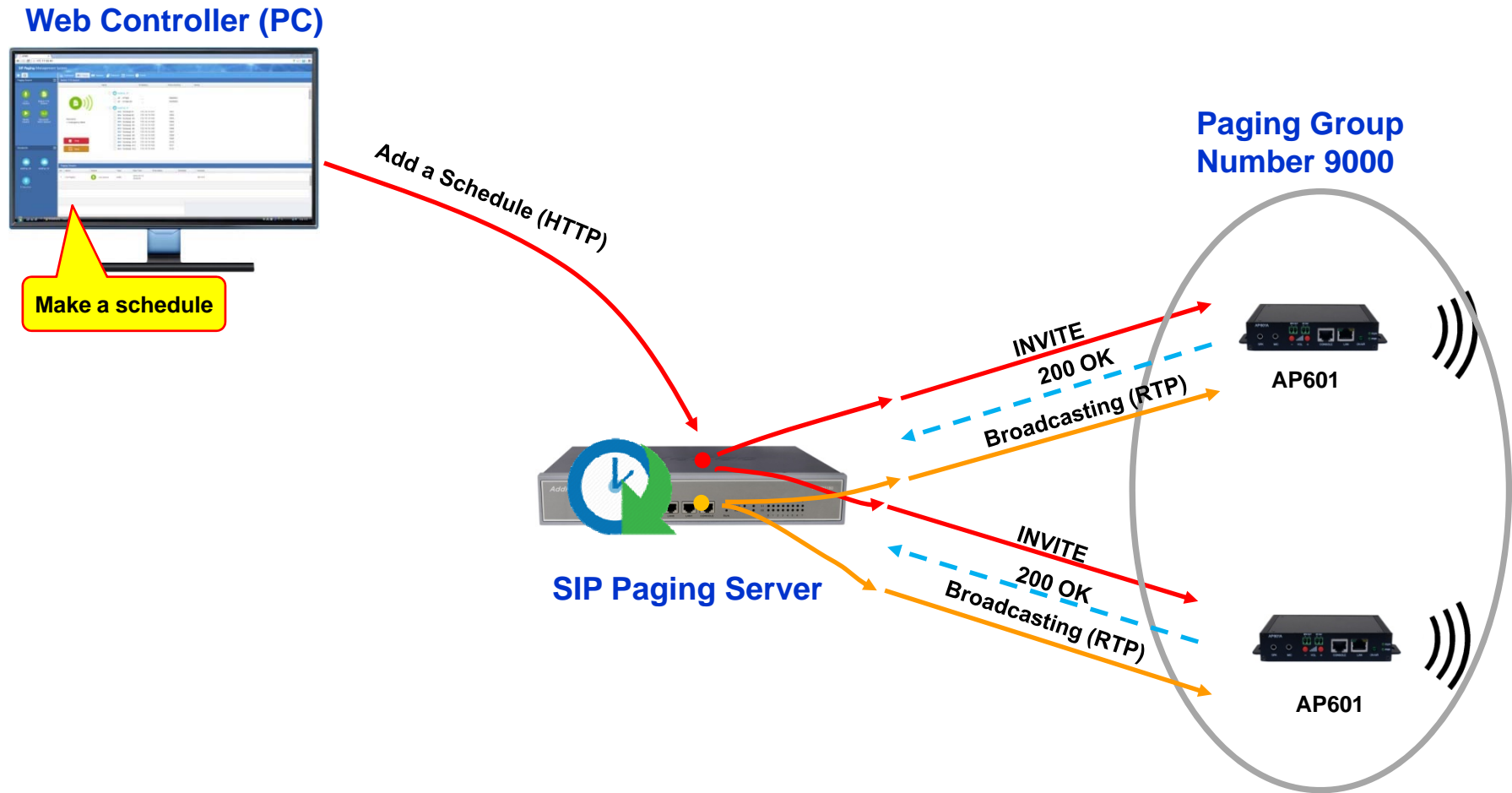
SIP Phone Initiated Real-Time Paging



Soft SIP Phone Initiated Real-Time Paging



Scheduled Paging





SIP Paging Management Software (SPMS)

Contents

- SIP Paging Management Software Overview
 - Paging Device Management
 - Paging Group Management
 - Access Authority Management
 - Real-time and Recorded Paging
 - One Click Paging
 - Scheduled Paging
 - HTTP API Paging
 - TTS Paging
 - SMS Paging

SIP Paging Management System GUI Initial Screen

SIP Paging Management System

Dashboard | Paging | Devices | Resource | Schedule | Events

Paging Group

- Live Paging
- Notice TTS Paging
- Media Paging
- Recorded Voice Paging

Welcome to SIP Paging Management System

Root (Administrator)
Last login at June 06 10:37:20 AM (172.16.63.150)

Unread Alarms

- 12:34:10 AP1602 #23(2918) connection terminated.
- 10:12:45 AP1602 #25(2915) connection terminated.

Getting Started

- Terminal**
A terminal can be a paging source or recipient. The internal terminal is registered to this paging server.
- Trunk**
A trunk is a call routing path to other SIP servers such as IP-PBX.
- Paging Source**
A paging source could be a live terminal or a media file.
- Paging Recipients**
A paging recipients could be a terminal or a set of terminals.
- Paging Group**
A paging group has a source and recipients with paging settings and number.

Active Paging

- Notice TTS paging (05:12)
- Live Paging (00:38)
- Media Paging (07:12)

Status

Terminals | **Paging Server** (172.17.50.65) | **Trunks**

Memory: 80% | Storage: 60% | Network: [Status]

Registered | Unregistered

External IP-PBX: 192.168.100.102
External Trunk: 192.168.100.102

Favorite Paging Group with Source

Active Paging Sessions

Paging Group Management

The screenshot displays the SIP Paging Management System interface. The top navigation bar includes Dashboard, Paging, Devices, Resource, Schedule, and Events. The main content area is divided into two sections: 'Notice TTS Source' and 'Paging Session'.

Paging Source Configuration:

- Notice TTS Source Table:**

Name	IP Address	Phone Number	Status
AddPac 2F			
2F - VP300	-	5680001	
2F - VP300 #2	-	5680002	
AddPac 5F			
Terminal #1	172.16.19.101	1001	
Terminal #2	172.16.19.102	1002	
Terminal #3	172.16.19.102	1003	
Terminal #4	172.16.19.102	1004	
Terminal #5	172.16.19.102	1005	
Terminal #6	172.16.19.102	1006	
Terminal #7	172.16.19.102	1007	
Terminal #8	172.16.19.102	1008	
Terminal #9	172.16.19.102	1009	
Terminal #10	172.16.19.102	1010	
Terminal #11	172.16.19.102	1011	
Terminal #12	172.16.19.102	1012	
- Resource:** Emergency Ment
- Buttons:** Stop (red), Save (orange)

Paging Session Log:

No	Name	Source	Type	Start Time	Time Status	Schedule	Duration
1	Live Paging	Live Source	Audio	2016-04-15 20:08:59			00:10:21

Paging source

Paging Groups





Paging Organizer

Scheduled Paging Management

The screenshot displays the 'SIP Paging Management System' interface. At the top, there is a navigation bar with icons for Dashboard, Paging, Devices, Resource, Schedule (selected), and Events. Below this is a sub-navigation bar with 'Calendar' and 'List' options. The main area shows a calendar for April 2016, with navigation buttons for Day, Week, and Month views. The calendar grid shows dates from March 27 to April 30. A yellow event block is visible on April 20th, labeled 'Today 2:44 pm'.

Sun	Mon	Tue	Wed	Thu	Fri	Sat
Mar 27, 2016	28	29	30	31	Apr 1	2
3	4	5	6	7	8	9
10	11	12	13	14	15	16
17	18	19	20 Today 2:44 pm	22	23	
24	25	26	27	28	29	30

Events

SIP Paging Management System					
Dashboard Paging Devices Resource Schedule Events					
		Latest 1day		Select item	
ID	Date Time	Level	Category	Message	
1	2016-04-16 09:10:16	 Information	Paging	Paging ' Notice TTS Paging ' Started	
2	2016-04-16 14:12:16	 Warning	Paging	5F VP300 connection terminated	
3	2016-04-17 11:43:22	 Warning	Paging	System Start up	
4	2016-04-19 15:10:59	 Critical	Paging	System Shutdown	



Thank you!

AddPac Technology Co., Ltd.
Sales and Marketing

Phone +82.2.568.3848 (KOREA)

FAX +82.2.568.3847 (KOREA)

E-mail sales@addpac.com