

AP-AC20N

IP Voice Intercom

High Performance IP Voice Intercom Solution



Preliminary Product Overview

(Without notice, following described technical spec. can be changed)

AddPac

AddPac Technology

Sales and Marketing

www.addpac.com

Contents

- Product Overview
- Product Highlights
- Hardware Specification
- Software Service
- Audio & Voice Service and Features
- OSD Software Features
- Smart Web Manager
- Application Area
- Ordering Information



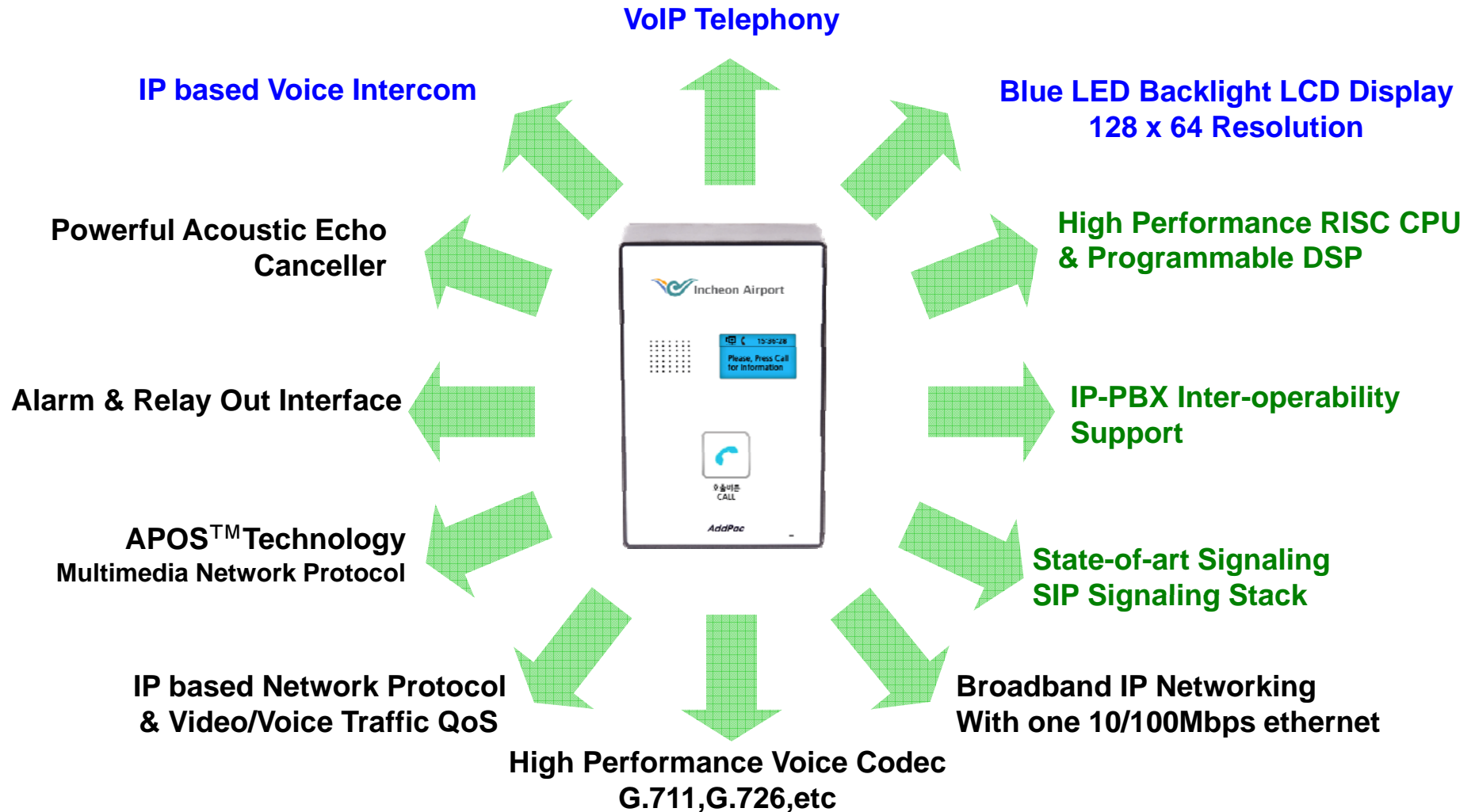
Product Overview

AP-AC20N IP Voice Intercom

- High Performance IP Door Phone Solution
- Call Button, Internal MIC & Speaker
- Blue LED Backlight LCD, 128 x 64 Display Resolution
- SIP VoIP Signaling Stack Embedded
- High-performance Voice Codec Support
 - G.711,G.726, etc
- One(1) 10/100Mbps Fast Ethernet
- Option : PoE(Power over Ethernet) Support
- High Quality Speaker Phone Features
- Powerful Network Protocols (PPPoE, DHCP, Static Routing, etc)
- Firmware Upgradeable Architecture
- Advanced Voice QoS Mechanism

Product Highlights

AP-AC20N IP Voice Intercom

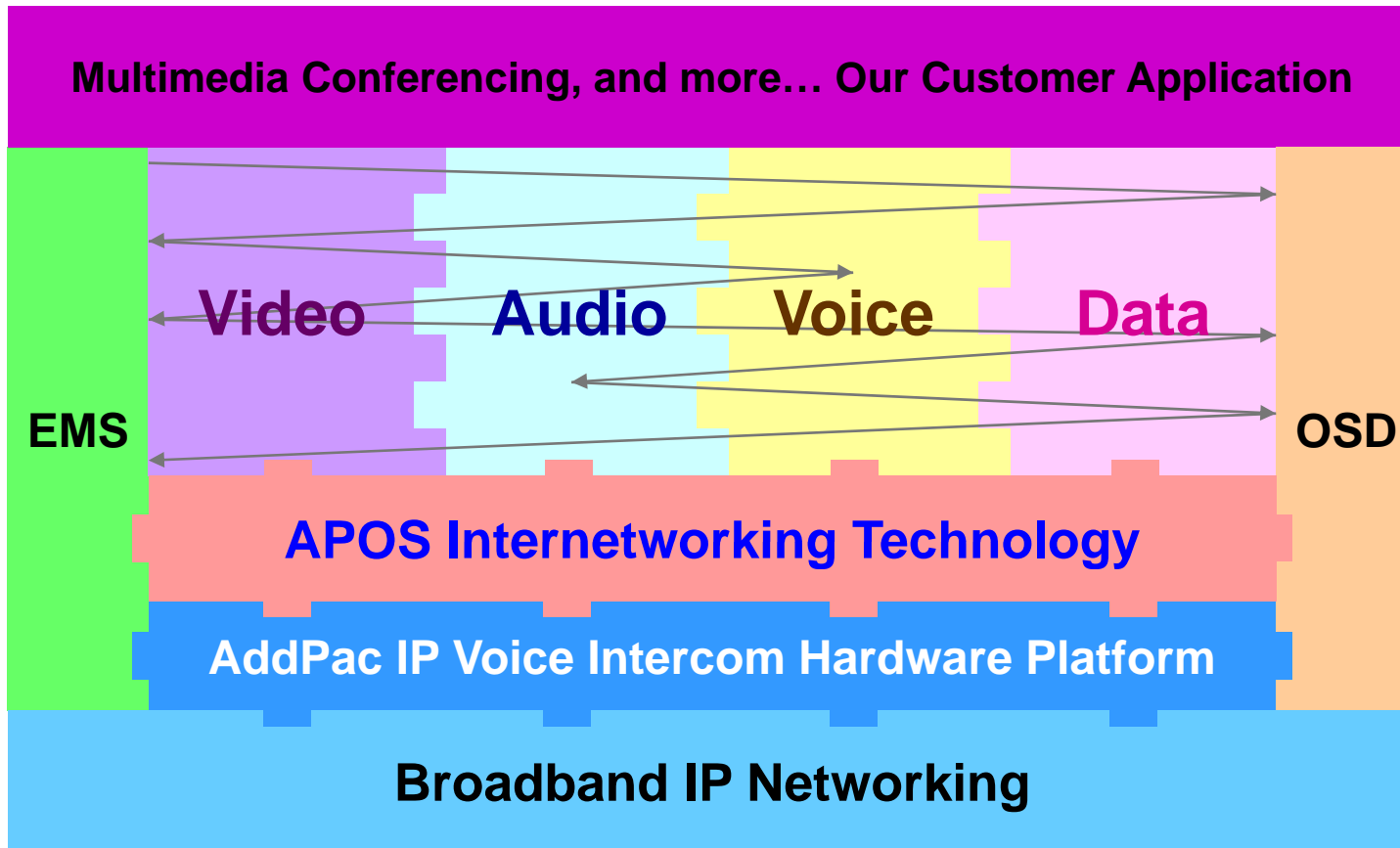


AddPac

www.addpac.com

Multimedia Service

AP-AC20N IP Voice Intercom



- APOS : AddPac Internetworking Operating System
- OSD : On- Screen Display
- EMS : Element Management System

Hardware Specification

AP-AC20N IP Voice Intercom

RISC
CPU

High-end
DSP

- RISC+DSP Microprocessor Computing Power
- Audio and Voice Interface
 - Internal MIC
 - Internal Speaker
 - Call Button (Touch Key)
- Blue LED Backlight LCD Interface
 - 128 x 64 Video Resolution
- Network Interface
 - One(1) 10/100Mbps Fast Ethernet
- Alarm & Relay Out Interface (door open, etc)
- RS232 Interface
- Power Supply
 - Power over Ethernet (Option)
 - External Power Supply

Hardware Specification

AP-AC20N IP Voice Intercom

RISC
CPU

High-end
DSP

- **Speaker**
 - Impedance : 8 +-15%ohm at 1kHz, 1.0 Vrms
 - Sound Pressure : 90 +- 3dB at 0.1W/10 CM at 800Hz, 1.0kHz, 1.2kHz, 1.5kHz
 - Resonance Level : 550Hz +- 20%Hz at Fo Hz, 1.0Vrms
 - Frequency Range : Fo Hz ~20kHz
 - Input Power : Normal : 1.0 W, Max : 2.0W
- **Audio Amplifier**
 - 1-W BTL Output(5V, 0.11 % THD+N)
 - Uncompensated Gains of 2 to 20 (BTL Mode)
 - Thermal and Shot-circuit Protection
 - High Supply Ripple Rejection Ratio
- **PoE(Power over Ethernet) : Option**
 - IEEE802.3af compliant
 - Input voltage range 36V to 57V
 - Short-circuit Protection
- **LCD Controller**
 - Display Type : FSTN, Positive
 - Built-in Controller : ST7567
 - Blue LED Backlight
 - Active Area : 35.48(W) x 22.38(H)
 - Number of Dots : 128 x 64

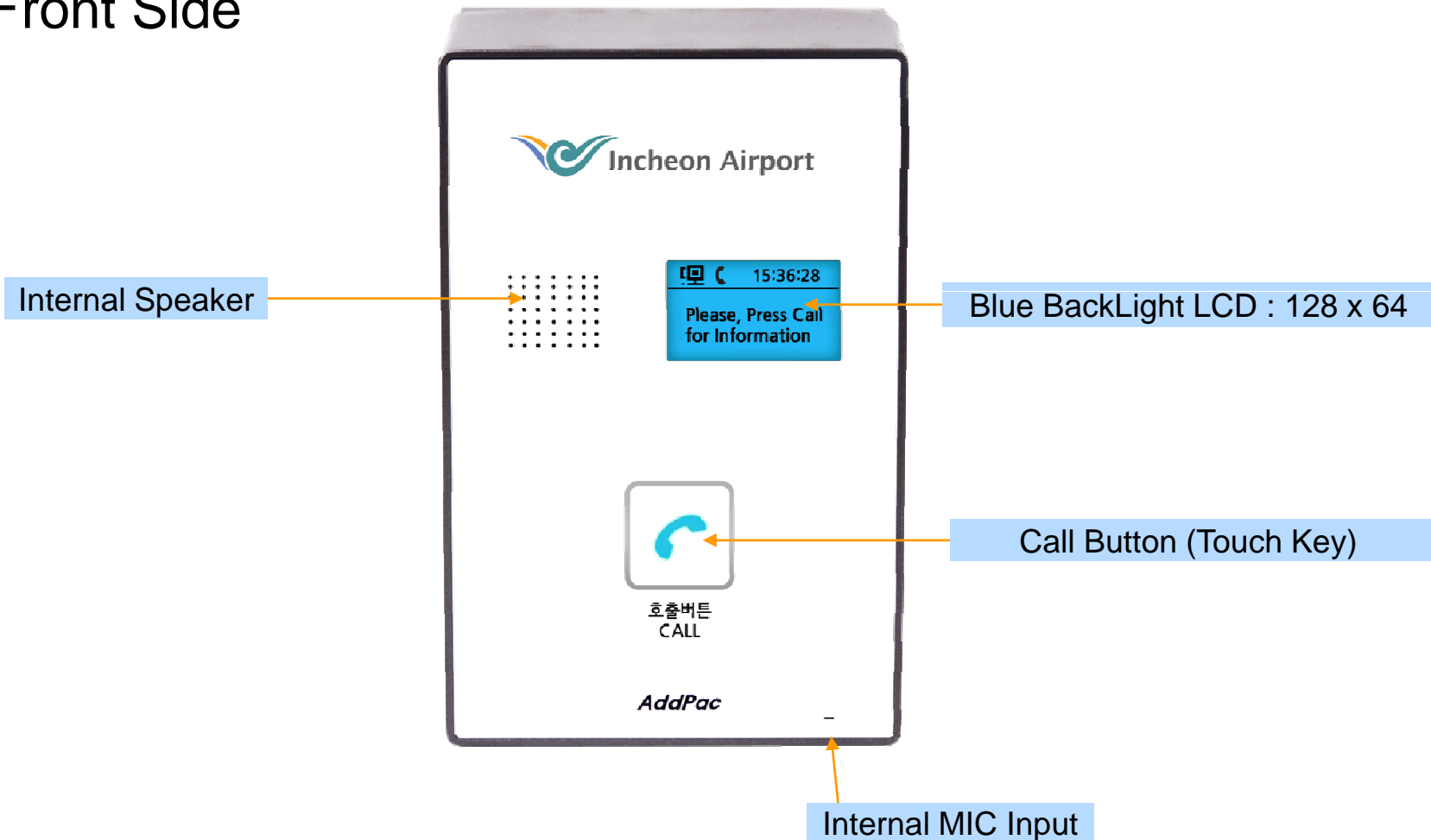
Hardware Specification

AP-AC20N IP Voice Intercom

RISC
CPU

High-end
DSP

Front Side



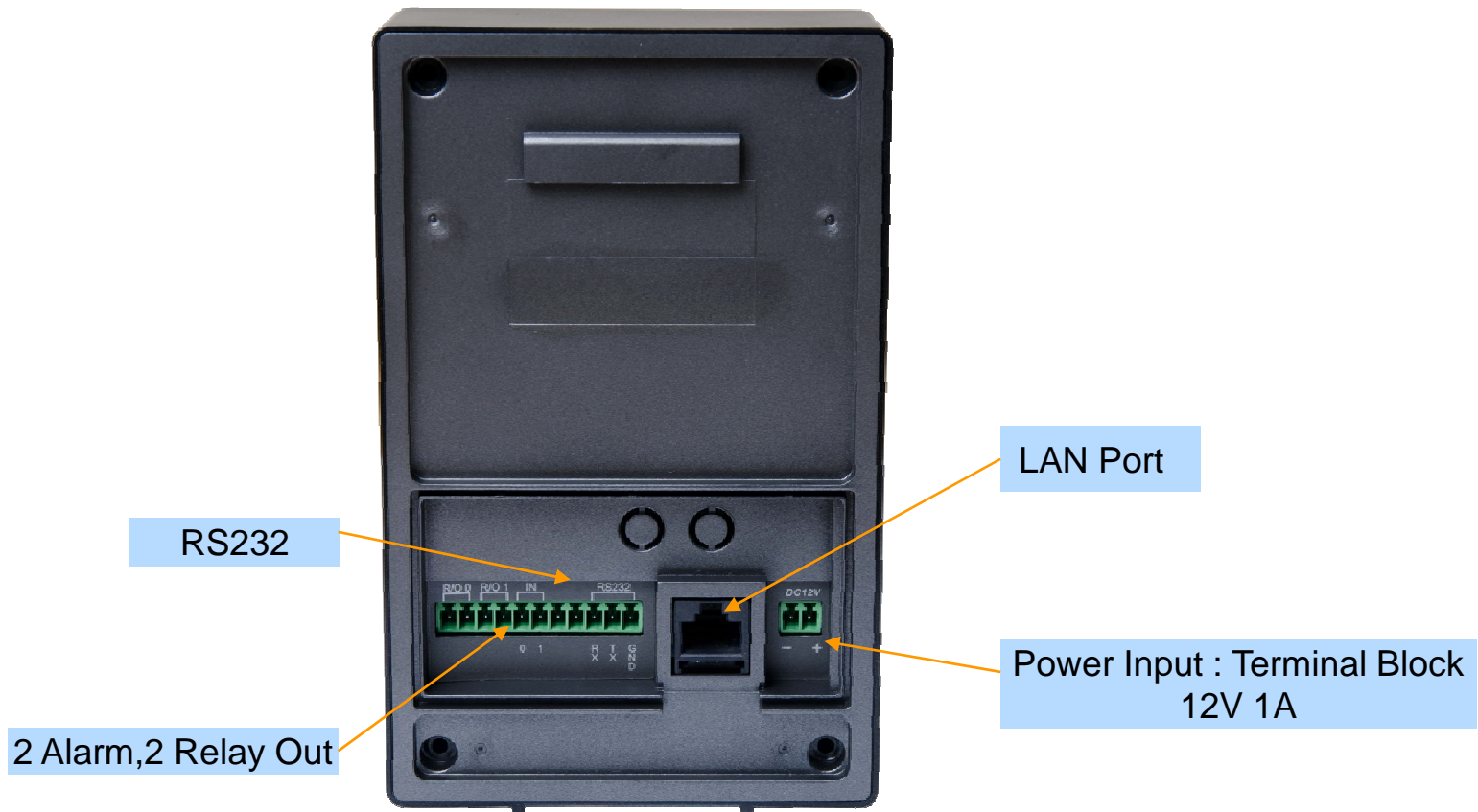
Hardware Specification

AP-AC20N IP Voice Intercom

RISC
CPU

High-end
DSP

Back Side



Hardware Specification

AP-AC20N IP Voice Intercom

RISC
CPU

High-end
DSP

Power Supply

Terminal Block



12V 1A Power Adaptor

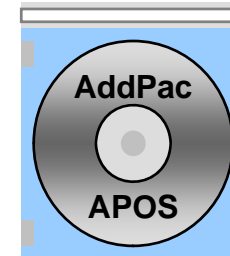
Example



Software Service

AP-AC20N IP Voice Intercom

- **Built-in AddPac APOS Internetworking Software**
 - Scalability, Functionality, and Stability Features
 - Video Traffic QoS Control
- **Programmable Audio, and Voice Services**
 - Audio, and Voice Codec
- **Firmware Upgradeable DSP Architecture**
- **OSD (On-screen Display) Function Support**
- **Industry Standard IP based Network Protocol Features**



Audio & Voice Service and Features

AP-AC20N IP Voice Intercom

- **VoIP based Signaling Protocol Support**
 - SIP Signaling Protocol Stack
- **High-performance Audio & Voice Codec Support**
 - G.711, G.726, etc, Audio Codec
- **Enhanced QoS Management Features for Voice Traffics**
- **Full Duplex Voice Communication**
- **High Quality Voice**
- **Acoustic Echo Canceller for Full Duplex Voice Communication**



Smart Web Manager (Example)

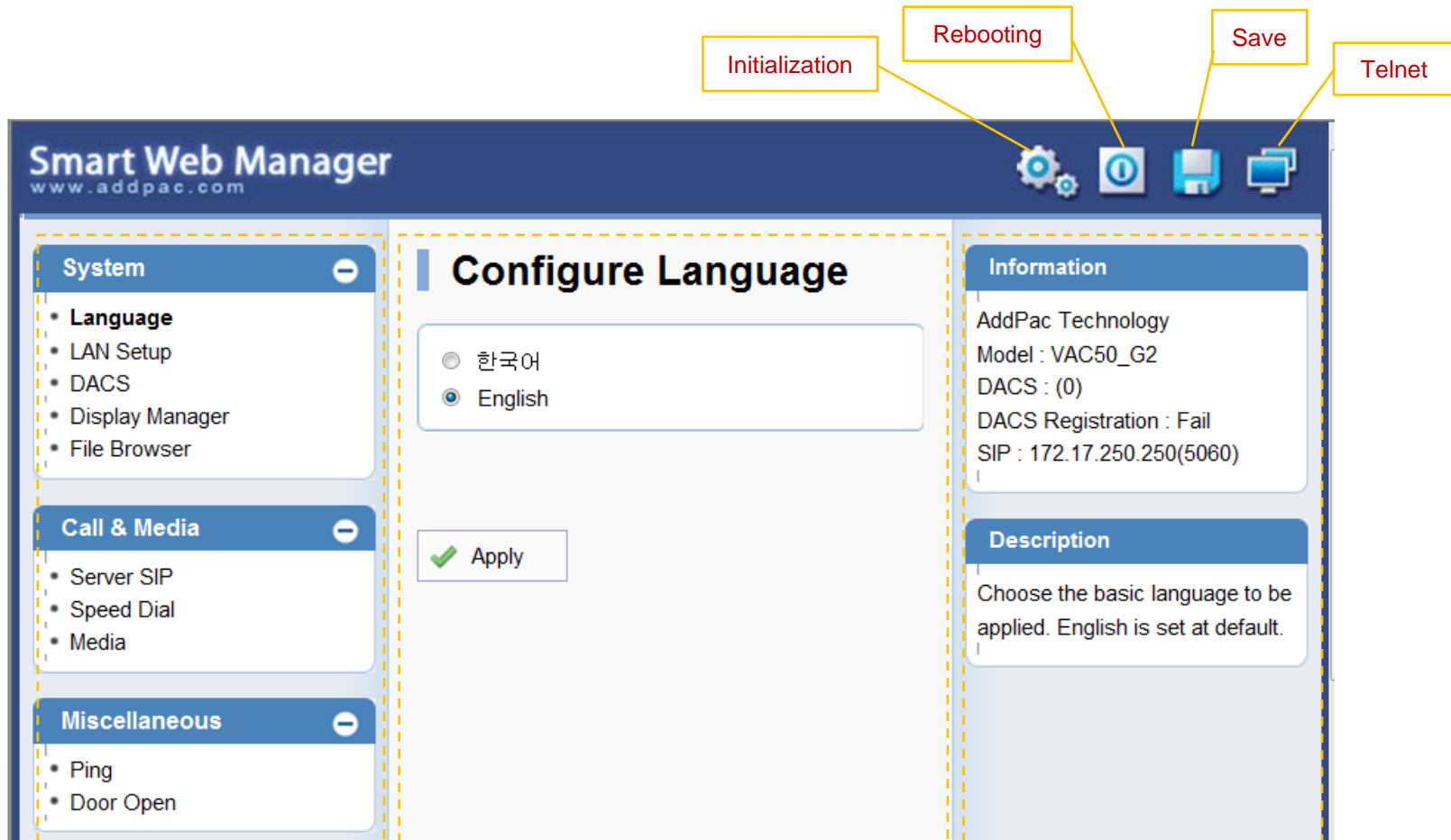
Smart Web Manager

AP-AC20N IP Voice Intercom

- Main Screen
- System
 - Language
 - LAN Setup
 - DACS
 - Display
 - File Browser
- SIP Call & Media
 - SIP (Session Initiation Protocol)
 - Speed Dial
 - Media
- Miscellaneous
 - Door Control and Test
 - Network Test

Smart Web Manager : Main Screen

AP-AC20N IP Voice Intercom



Menu Tree

Output Screen after
Menu Select

System Information and
Help Message

Smart Web Manager : SIP configuration

AP-AC20N IP Voice Intercom

SIP (Session Initiation Protocol)

SIP server check if exist.

SIP Basic Information Display

Telephone Line Number and Password Configuration
Same Information is used when DACS is connected

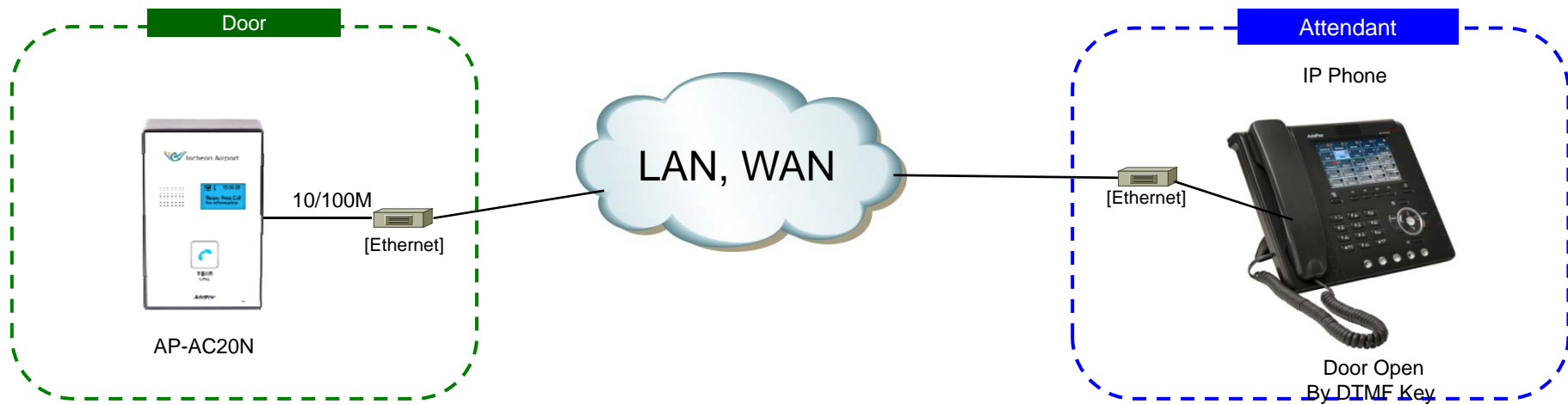
Use SIP Server	<input checked="" type="radio"/> Yes <input type="radio"/> No
Primary SIP Server	<input type="text" value="172.17.250.250"/> <input type="text" value="5060"/> Server address and Port (default 5060)
Secondary SIP Server	<input type="text"/> <input type="text" value="5060"/> Server address and Port (default 5060)
Local Domain Name	<input type="text"/> (SIP userpart of authentication)
SIP Signaling Port	<input type="text" value="5060"/> (default 5060, between 1 to 65535)
Register Expiration	<input type="text" value="60"/> (in seconds, default 60, between 10 to 86400)
Session Re-Fresh	<input checked="" type="radio"/> INVITE <input type="radio"/> UPDATE
Session Expire Time	<input type="text" value="1800"/> (in seconds, default 1800, between 30 to 86400, 0 = disable)
Min-SE	<input type="text" value="1800"/> (in seconds, default 1800, between 30 to 86400)
Extension	<input type="text" value="1020"/> <input type="text"/> Extension Number, Password

AP-AC20N IP Voice Intercom

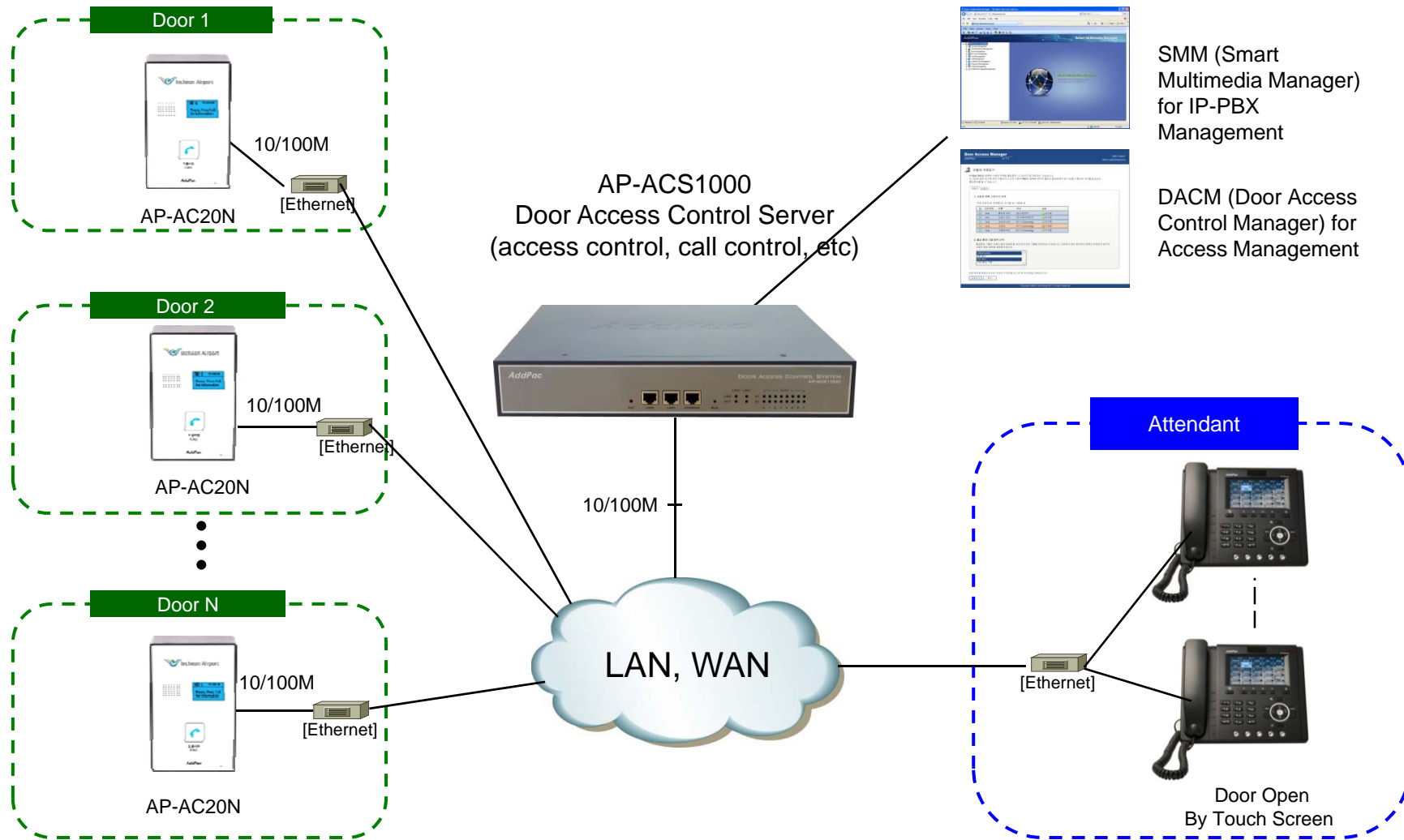
Application Area

- Point-to-Point Application (Simple Application)
 - All IP Environment
 - Hot-Line (FXS Interface)
- Point-to-Multipoint Application
 - All AddPac Solution
(Call Manager + Door Access Control Server)
 - Legacy PBX Environment
 - Legacy IP-PBX Environment
 - Analog Line Service Environment (FXO, VoIP Gateway, IP-PBX, etc)

Point-to-Point Connection (Simple Appl.)



Integrated Door Access Control and Call Control (All AddPac Solution)



Ordering Information

- **AP-AC20N IP Voice Intercom Hardware**
 - AP-AC20 IP Voice Intercom Main Body
 - RISC Microprocessor with High-end Programmable DSP Architecture
 - Blue LCD, Internal MIC, Internal Speaker
 - 1-ports 10/100Mbps Fast Ethernet
 - Option : PoE Interface
 - Including Network Cable Set & Ext. Power Supply, etc.
- **Built-in APOS Internetworking Software for AP-AC20N**
- **Including 1 Year Hardware Warranty**
- **Product Documents**
 - Install and Operation Guide (PDF)
- **Pricing**
 - AddPac Technology Regional Sales Manager
 - Authorized Sales and Marketing Representatives
 - Please Contact www.addpac.com



Thank you!

AddPac Technology Co., Ltd.
Sales and Marketing

Phone +82.2.568.3848 (KOREA)

FAX +82.2.568.3847 (KOREA)

E-mail sales@addpac.com