

VoiceFinder AP200

VoIP Residential Gateway



Installation Guide

Release 1.0

June. 2003

AddPac Technology Co., Ltd.
2/ 3F, Jeong-Am Bldg, Kangnam-Gu,
Seoul, Korea. Zip 135-080
Phone (82 2) 568-3848
Fax (82 2) 568-3847
E-mail: info@addpac.com
<http://www.addpac.com>

[Contents]

About This Guide

Chapter 1. VoiceFinder AP200 Overview	11
Introduction to VoiceFinder AP200 Gateway.....	11
Main Features	13
Hardware Description	13
Voice over IP Service.....	14
IP Routing Protocols	14
Network Managements	15
Security Functions	15
PSTN Backup Functions.....	15
Operation and Managements	16
Other Scalability Features.....	16
Hardware Configuration and Network Interface	17
VoiceFinder AP200 Gateway Part & Description	17
Front View of AP200	17
Rear View of AP200.....	19
Network Interface.....	22
Voice Processing Interfaces	23
Chapter 2. Before Installation	24
Installation Requirements	24
Electrical Requirements	24
General Requirements.....	25
Network Connection Requirements	26
Necessaries	26
Ethernet Port.....	27
RS-232C Serial Console Port	27
Chapter 3. Gateway Installation.....	28
Unpacking	28
VoiceFinder AP200 Interfaces and Cable connection	29
Async Serial Interface Connection.....	29
Ethernet Interface Connection	30
FXS Voice Interface Connection	31
PSTN Interface Connection	31

FXO Interface Connection32

VoiceFinder AP200 Interface connection example33

Booting.....34

 Use Console terminal with HyperTerminal.....36

Chapter 4. Appendix42

VoiceFinder AP200 Gateway Technical Description.....42

Cable Specification45

[Table of Figures]

Figure 1-1: The network diagram using VoiceFinder AP200 Gateway	11
Figure 1-2: The exterior view of VoiceFinder AP200 Gateway	12
Figure 1-3: VoiceFinder AP200 Gateway front view.....	17
Figure 3-1: Connect VoiceFinder AP200 Gateway and Console PC	29
Figure 3-2: Connect VoiceFinder AP200 Gateway with WAN and normal PC.....	30
Figure 3-3: Connect VoiceFinder AP200 Gateway and a normal telephone	31
Figure 3-4: Connect VoiceFinder AP200 Gateway and a PSTN line	31
Figure 3-5: Connect VoiceFinder AP200 Gateway and PBX	32
Figure 3-6: The example of interface connection.....	33
Figure 3-7: MS-Windows Communication Emulator HyperTerminal	36
Figure 3-8: Assign a name for the new connection	37
Figure 3-9: Select the interface for Console cable	38
Figure 3-10: COM1 Properties	39
Figure 3-11: The HyperTerminal message of VoiceFinder AP200 Gateway	41
Figure 4-1: 10Base-T RJ-45 Connector	46

[Table of Tables]

Table 1-1: The interfaces and explanation of the front panel of AP200	18
Table 1-2: The interfaces and explanation of the rear panel of AP200 Gateway.....	19
Table 1-3: Interfaces of VoiceFinder AP200 models	21
Table 3-1: VoiceFinder AP200 Gateway package	28
Table 4-1: The transferred signal and Pinout specification	45
Table 4-2: Signal and Pinout of Direct Ethernet Cable.....	46

About This Guide

This chapter outlines the structure of VoiceFinder AP200 VoIP Gateway Installation Guide and explains the symbols and legends.

[Organization]

The VoiceFinder AP200 VoIP Gateway Installation Guide is offered to assist the operation VoiceFinder AP200 VoIP Gateway. This manual is composed of 4 chapters.

Experienced users may refer directly to the related chapters. However, less experienced users are highly recommended to thoroughly review this manual before operation of the gateway.

- Chapter 1 「**Introduction**」 provides an introduction to the H/W and S/W of VoiceFinder AP200 VoIP Gateway and how to apply for the technical supports.
- Chapter 2 「**Before Installation**」 provides an explanation on the installation environment and cable requirements along with recommendations for safe operation of the equipment.
- Chapter 3 「**Installation**」 explains the basic installation information on connecting the gateway with cables, how to use Console terminal and etc.
- Chapter 4 「**Appendix**」 includes the specification of the gateway, the cable and etc.

For technical supports, please contact AddPac Technology Co. Ltd.

AddPac Technology Co., Ltd
2/ 3 Fl. Jeong-Am Bulding, 769-12 Yeoksam-
Dong, Kangnam-Ku, Seoul, Korea
Phone (02) 568-3848
Fax (02) 568-3847
E-mail: info@addpac.com
<http://www.addpac.com>

The revision history of VoiceFinder AP200 VoIP Gateway Installation Guide is as follows.



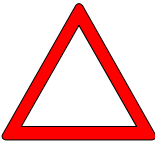

Revision No.	Date	Comments	Written by
Version 1.0	June 2003	1 st Edition	AddPac R&D Center

[Symbols and Legends]

The symbols and legends used in this User’s Manual are as follows:

- Commands and Keywords are typed in **Bold**.
- Variables that require user inputs are typed in *Italic*.
- Square brackets ([]) are optional values.
- Keywords that are required but need to be selected are grouped in braces ({}), and are separated by Slashes (/).
- Angle brackets (<>) are required parameters must be inputted.

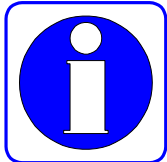
The following conventions are also used to attract the user’s attention.

<p>Danger</p> 	<p>Danger</p> <p>This symbol signals possible danger. Misuse could result in physical injuries. Please follow the instructions to avoid any electronic shocks.</p>
<p>Warning</p> 	<p>Warning</p> <p>It warns the users to be careful with the operation. Otherwise, it could result in hardware damage of the equipment or loss of data.</p>
<p>Caution</p> 	<p>Caution</p> <p>This symbol calls for the user’s caution. Otherwise, it could result in hardware damage of the equipment, loss of data or system configuration.</p>
<p>Information</p> 	<p>Information</p> <p>This symbol indicates additional information offering detailed information for understanding this user guide.</p>

Chapter 1. VoiceFinder AP200 Overview

Introduction to VoiceFinder AP200 Gateway

Information VoiceFinder AP200 VoIP Residential Gateway (hereinafter “VoiceFinder AP200 Gateway”) is a VoIP gateway offering voice, fax and data service by connecting Local Area Networks, Wide Area Network or broadband network of ADSL and DOCSIS (Cable).



The below is the network diagram using VoiceFinder AP200 Gateway.

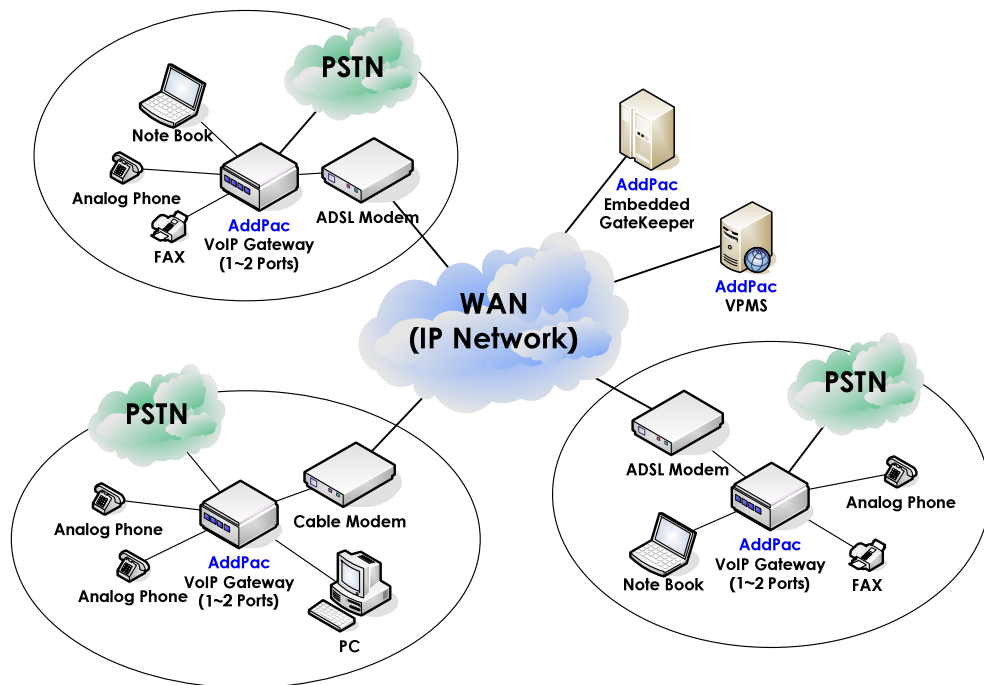


Figure 1-1: The network diagram using VoiceFinder AP200 Gateway

It supports static Route standard routing protocol and IEEE Spanning Tree Bridging function and it can be used for routing of small-scale networks.

VoiceFinder AP200 Gateway supports inter-operability with carrier-class backbone gateways, gatekeepers and routers along with existing AP VoIP gateway series realizing easy installation and maintenance.

The below figure is the exterior view of VoiceFinder AP200 Gateway.



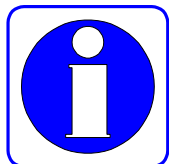
Figure 1-2: The exterior view of VoiceFinder AP200 Gateway

As a supplementary service, VoiceFinder AP200 Gateway provides Packet Filtering and Firewall function using an Access List method. The Firewall function restricts access to the local network from outside networks using source and destination IP address access list information at the Network Layer (IP Layer) and at the Transport Layer (TCP/UDP Layer).

Also, using DHCP (Dynamic Host Configuration Protocol), this equipment can assign IP addresses to network clients automatically (DHCP server mode) and can receive a dynamically assigned IP address from a DHCP Server (DHCP client mode). VoiceFinder AP200 Gateway solves the IP address shortage problem by using NAT (Network Address Translation) protocol.

Main Features

Information



VoiceFinder AP200 Gateway offers high speed Internet access function at enterprises, SOHO and ordinary households, also supports cutting-edge compression algorithm. It supports a LAN port for WAN connection, which can be connected to xDSL modem, maximum 2 FXS voice ports, LAN port for PC connection, and PTSN Backup (or FXO port) for PSTN connection.

※ The installed interfaces can be different depending on the models. For detailed information refer to chapter 3.

Especially, VoiceFinder AP200 Gateway is the ultimate solution for Small Medium Enterprise (SME) environment with its superior price vs. performance ratio. It is ideal for both enterprise users and ordinary house with high-speed Internet subscribers of ADSL and cable modem.

Also, VoiceFinder AP200 Gateway is easy to install and operate, even for first time users and offers static and default routing function. It is the most economic and effective solution for high-speed Internet access VoIP residential gateway.

Hardware Description

VoiceFinder AP200 Gateway supports the various network interface and voice interface modules based on latest Embedded H/W technology and system memory. The main H/W features are as followings.

- High Performance WAN-to-LAN Residential VoIP Gateway
- High Performance LAN-to-LAN routing solution
- High Performance 32bit RISC Microprocessor
- Stable, Fixed Network interface structure
- Fixed 1-Port 10Mbps Ethernet Interface for WAN Interface (RJ45)
- Fixed 1-Port 10Mbps Ethernet Interface for LAN Service (RJ45)
- 1~2 FXS Voice Interface (RJ11)
- Fixed 1-Port Async Serial Interface for Console Port (RJ45)
- Fixed 1-Port PSTN Backup/Receive Port (RJ11, Support some of the FXO

functions)

- Compact, stylish design
- AC-DC External Power Supply Adapter
- Various System LEDs

Voice over IP Service

- VoiceFinder AP200 Gateway supports voice and data integration service, VoIP service.
- Offers 1~2 channel Voice ports and offers VoIP service by interoperating with PBXs, ordinary telephones and fax machines.
- Supports industry standard VoIP protocols such as H.323, SIP and MGCP.
- High performance DSP supports various voice compression algorithms such as G.723.1, G.729.A, G.711 and etc.
- Supports various voice-processing functions of VAD, DTMF & FAX Tone auto detection, CNG, Echo Cancellation and etc.
- Supports T.38 G3 FAX Relay.
- Interoperable with H. 323 based Gateways and Gatekeepers
- Interoperable with SIP Proxy Servers
- Interoperable with MGCs

IP Routing Protocols

VoiceFinder AP200 Gateway supports various IP routing protocols. The main IP routing features are followings.

- Supports various IP routing and bridging protocol
- Static, Default IP routing protocols
- Transparent Bridging (IEEE Spanning Tree Protocol)

Network Managements

VoiceFinder AP200 Gateway supports various network management protocols and functions.

- Standard SNMP Agent (MIB v2), MIB II, Bridge MIB Support
- Consol function with Async. Port.
- Remote Management using Console, Rlogin, Telnet.
- Traffic Queuing
- Web based Managements

Security Functions

VoiceFinder AP200 Gateway supports various security functions.

- Standard & Extended IP Access List for network security function.
- Enable/Disable for Specific Protocols
- Multi-level User Account managements
- Auto-Disconnect for Telnet/Console Sessions

PSTN Backup Functions

VoiceFinder AP200 Gateway supports PSTN Backup function.

- Real-time monitoring and switching to PSTN in case of network failure
- Real-time monitoring and shutting down the port or generating busy tone.

Operation and Managements

VoiceFinder AP200 Gateway supports following operation and maintenance features.

- System Performance Analysis for Process, CPU, Connection I/F
- Configuration Backup & Restore for APOS Managements
- Debugging, System Auditing, and Diagnostics Support
- System Managements with Data Logging
- System Booting and Auto-rebooting with Watchdog Feature
- IP Traffic Statistics with Accounting

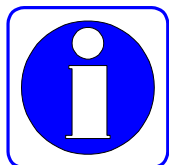
Other Scalability Features

VoiceFinder AP200 Gateway supports various supplementary service functions.

- DHCP server function for easy IP management
- NAT/PAT function for effective IP management
- Remote S/W upgrade with TFTP & FTP
- Industry standard Command Line Interface type operation
- Network Time Protocol (NTP)

Hardware Configuration and Network Interface

Information This Chapter explains the external form and network interfaces of VoiceFinder AP200 Gateway.



VoiceFinder AP200 Gateway Part & Description

VoiceFinder AP200 Gateway is made by the high intensity ABS with compact design. The front panel of VoiceFinder AP200 Gateway includes various LEDs indicating the operational status of the device. On the rear panel, there is a LAN0 interface for WAN connection and LAN1 interface for LAN connection.

Front View of AP200

The front panel of VoiceFinder AP200 Gateway includes various LEDs indicating the operational status of the device.

The following figures are the external form of VoiceFinder AP200 Gateway.

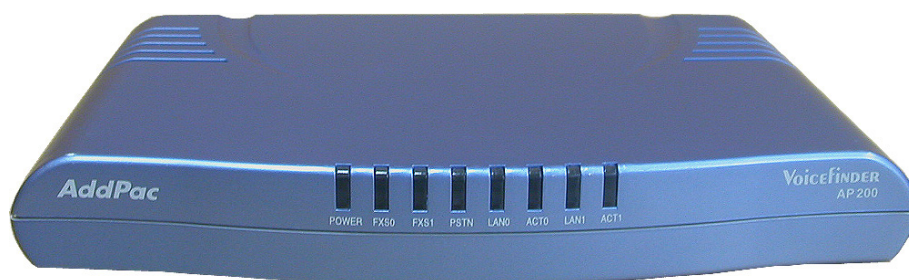


Figure 1-3: VoiceFinder AP200 Gateway front view

Table 1-1 shows the functional explanation about each LED of VoiceFinder AP200 Gateway.

Table 1-1: The interfaces and explanation of the front panel of AP200

No.	Interface	Explanation
(1)	POWER	Power LED, display whether external power is supplied normally or not. (Green)
(2)	FXS0	Display the operation status of "FXS0" voice interface port. (Orange)
(3)	FXS1	Display the operation status of "FXS1" voice interface port. (Orange)
(4)	PSTN	Display the operation status of PSTN backup port (Red)
(5)	LAN0	Display the operation status of LAN0 port.(Active Green)
(6)	ACT0	Display the TX/RX status of LAN0 port. (Active Orange)
(7)	LAN1	Display the operation status of LAN1 port.(Active Green)
(8)	ACT1	Display the RX/TX status of LAN1 port. (Active Orange)

※ The LEDs on the front panel are vary by each VoiceFinder AP200 Gateway models.

Rear View of AP200

The rear side of the VoiceFinder AP200 VoIP Gateway includes 10Mbps Ethernet Interface for WAN/LAN interface, PSTN port, RS-232C serial port for management, and FXS/ FXO interface port for voice signal processing. It can also form network environment for WAN-to-LAN routing service.

Standard Configuration Model

Following figure shows the standard configuration of the back panel of VoiceFinder AP200 gateway.



Figure 1-4: The rear panel image of VoiceFinder AP200 Gateway

The following Table 1-2 explains the rear side panel interface of AP200 VoIP gateway. (Varies depend on each VoiceFinder AP200 Gateway models)

Table 1-2: The interfaces and explanation of the rear panel of AP200 Gateway

No.	Interface	Explanation
(1)	DC power	External DC power supply input
(2)	PSTN	This port is used to connect PSTN subscriber line for VoIP service via PSTN backup (RJ11)
(3)	FXS (0)	1 FXS Port: analog phone or FAX machine can be connected (RJ11)
(4)	LAN0	10Mbps Ethernet interface for WAN connection. (RJ45)
(5)	LAN1	10Mbps Ethernet port to connect PC used on LAN.
(6)	Console	Console interface for network management. (RJ45)

Following figures show the back panel interface pictures of VoiceFinder AP200 Gateway.



Figure 1-5: The real panel of VoiceFinder AP200B model

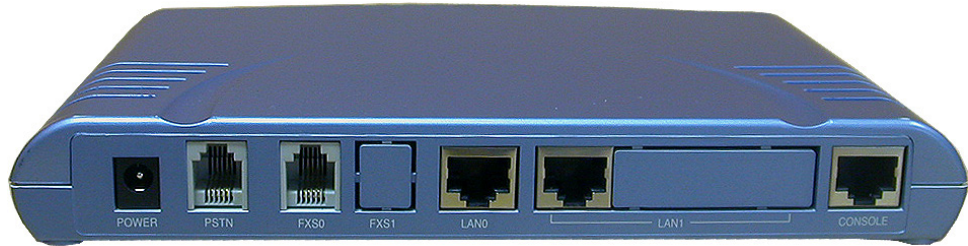


Figure 1-6: The real panel of VoiceFinder AP200C model



Figure 1-7: The rear panel of VoiceFinder AP200D model



Figure 1-8: The rear panel of VoiceFinder AP200E model

Table 1-3: Interfaces of VoiceFinder AP200 models

Model	Ethernet	FXS	FXO	PSTN	Console
AP200-B	2 x 10Mbps	2	None	1	1
AP200-C	2 x 10Mbps	1	None	1	1
AP200-D	2 x 10Mbps	None	2	None	1
AP200-E	2 x 10Mbps	1	1	None	1

Network Interface

VoiceFinder AP200 Gateway supports the following network interfaces:

- **1 Port 10Mbps Ethernet Interface for WAN**
- **1 Port 10Mbps Ethernet Interface for LAN**
- **1 Port RS232C Asynchronous Serial Interface**

With the above network interface, VoiceFinder AP200 Gateway can establish WAN and LAN network supporting TCP/IP network protocol. So it can easily form VoIP network on the broadband network of ADSL and Cable Modem. Also, the Console port offers easy configuration of the gateway. Moreover, it supports Cable Modem an ADSL connection with LAN interface realizing simple VoIP network formation at ordinary household and SOHO.

The next section explains the network interfaces of VoiceFinder AP200 Gateway.

1-Port 10Mbps Ethernet WAN Interface (RJ45)

VoiceFinder AP200 Gateway supports one (1) 10Mbps Fast Ethernet Interface. Using this Interface, the WAN can be formed. It is a RJ45 type standard interface.

1-Port 10Mbps Ethernet LAN Interface (RJ45)

VoiceFinder AP200 VoIP Gateway offers one (1) 10Mbps Ethernet interface to form Local Area Network (LAN). It is a RJ45 type standard interface.

1-Port Async. Serial Interface for Console Port (RJ45)

VoiceFinder AP200 Gateway provides network management features using an RS-232C asynchronous serial interface port.

Voice Processing Interfaces

The fixed voice interface of VoiceFinder AP200 Gateway can be connected to the ordinary telephones, fax machines and PBX.

- **FXS Interface voice processing port**
- **FXO Interface voice processing port**
- **PSTN Backup port for PSTN connection**

VoiceFinder AP200 Gateway is a network device offers not only data service, but also voice service at one device.

1~2 Port FXS Voice Interface

VoiceFinder AP200 Gateway supports one (1) or two (2) Port FXS (Foreign Exchange Station) Voice Interface. Using these FXS Voice Interface, VoiceFinder AP200 Gateway provides analog Line Interface solutions, which can interface to general Phone, FAX Machine, etc.

1 ~ 2 Port FXO Voice Interface

VoiceFinder AP200 Gateway supports one (1) or two (2) Port FXO (Foreign Exchange Office) Voice Interface. Using this FXO Voice Interface, VoiceFinder AP200 Gateway provides analog Line Interface solutions that can interface to PBX, PSTN Line, etc.

1-Port PSTN Backup Interface

VoiceFinder AP200 Gateway offers one (1) PSTN Backup port, which can be connected to PSTN line and make calls and receive calls directly.

Chapter 2. Before Installation

Installation Requirements

Warning

The following recommendation should be followed for safe operation of the product.



- Ensure VoiceFinder AP200 Gateway is in a dust-free environment before and after installation.
- Make sure to open VoiceFinder AP200 Gateway cover on a flat and safe surface.
- To prevent accidents, be careful with ties, scarf, sleeves, and any other loose clothing from entangling with the chassis.
- Avoid any actions that may effect the equipment or the operator.

Electrical Requirements

Danger

There are two main sources of electrical problems with VoiceFinder AP200 Gateway: the power supply and static electricity.



This section describes safety recommendations for each case.

- **Electrical Safety**
 - ✓ Operate at a position where immediate shut-off of power supply is possible.
 - ✓ Turn off the power while installing or taking the cover off the equipment.
 - ✓ Avoid operating the equipment alone at potentially dangerous environment.
 - ✓ Do not assume the power is switched off, but always confirm the power status.
 - ✓ Be extremely cautious when operating in a humid environment or with an ungrounded power extension cable.

- **Prevention of Static Electricity**

- ✓ The main chip-set of the Gateway is very delicate and misuse may result in static electrical damage.
- ✓ If a static prevention wrist strap is available, strap it around the wrist and earth the cord before operating the equipment.
- ✓ If no wrist strap is available, earthing by holding a metal part of the Chassis will help prevent static electricity.

General Requirements

Warning

VoiceFinder AP200 Gateway is ready for use where other electronic products can be used. However, the following conditions are recommended for maximum performance.



- A flat and well ventilated location.
- Secure the equipment safely at the desired place to install
- Do not place any objects on top of the equipment.
- A location without direct sunlight.
- Keep away from flammable, chemical, or magnetic objects.

Network Connection Requirements

Warning



Consider EMI Standard and distance limitation while installing VoiceFinder AP200 Gateway.

The below explains PSTN cable, Ethernet cable, Console Cable of VoiceFinder AP200 Gateway.

Necessaries

Unless ordered in advance, the tools and certain cables are not provided in the package. Prepare the following equipments and tools before the installation.

- Standard screwdriver set

- Cables for LAN and Console port connection
 - ✓ RJ-45 to RJ-45 cable for LAN port
 - ✓ RS-232C Console cable with RJ-45 connector (included in the package)

- Cable to connect Phone port
 - ✓ RJ-11 to RJ-11 ordinary telephone cable

Ethernet Port

VoiceFinder AP200 Gateway offers two (2) RJ45 type 10BaseTX Ethernet Ports on the rear panel and LEDs are indicating the port status are on the front panel. The PIN information of the Ethernet cable, refer to Chapter 4.

RS-232C Serial Console Port

VoiceFinder AP200 Gateway offers one (1) RJ-45 type RS-232C connector on the rear panel. This port is for the initial configuration, monitoring and debugging. The PIN information of the RS-232C Console cable, refer to Chapter 4.

Chapter 3. Gateway Installation

Unpacking

Before unpacking, check for external damage to the packaging box.

If no external damages are found, confirm if the following items are enclosed.

Table 3-1: VoiceFinder AP200 Gateway package

No.	Item	Contents	Q'ty
1	VoiceFinder AP200 Gateway Main Body		1
2	Ethernet Cable (RJ45 to RJ45)		1
3	Console Cable (RJ45 to DB9)		1
4	Power supply External Adapter (110V/220V)		1

If any item is missing, immediately contact AddPac Technology Co. Ltd. customer support.

VoiceFinder AP200 Interfaces and Cable connection

- Install VoiceFinder AP200 Gateway at the suitable place illustrated at Chapter 2.

Async Serial Interface Connection

- Connect RJ45 connector of RS-232C serial console cable to the Console port and connect the other side of the cable at the serial port of the PC.

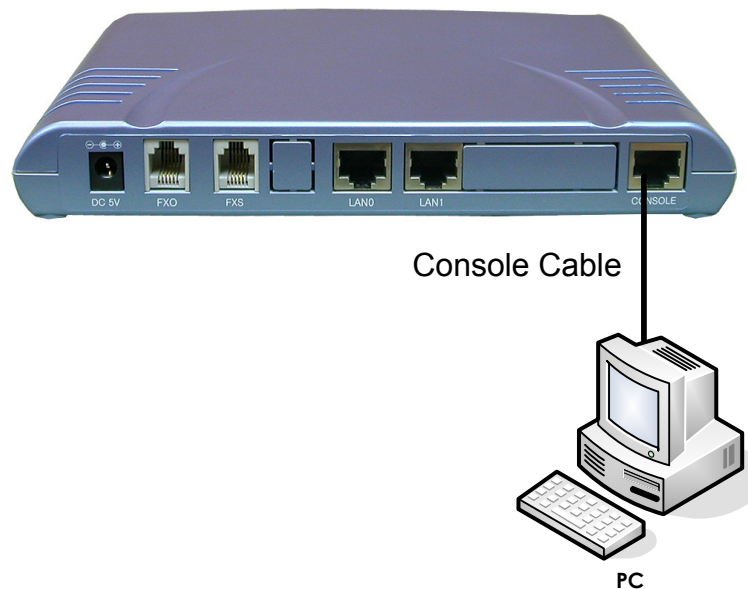


Figure 3-1: Connect VoiceFinder AP200 Gateway and Console PC

Ethernet Interface Connection

- With RJ45 UTP cable, connect LAN0 port of VoiceFinder AP200 Gateway and LAN interface of the WAN equipment. Also, connect LAN1 interface of the gateway with LAN interface of the user PC.

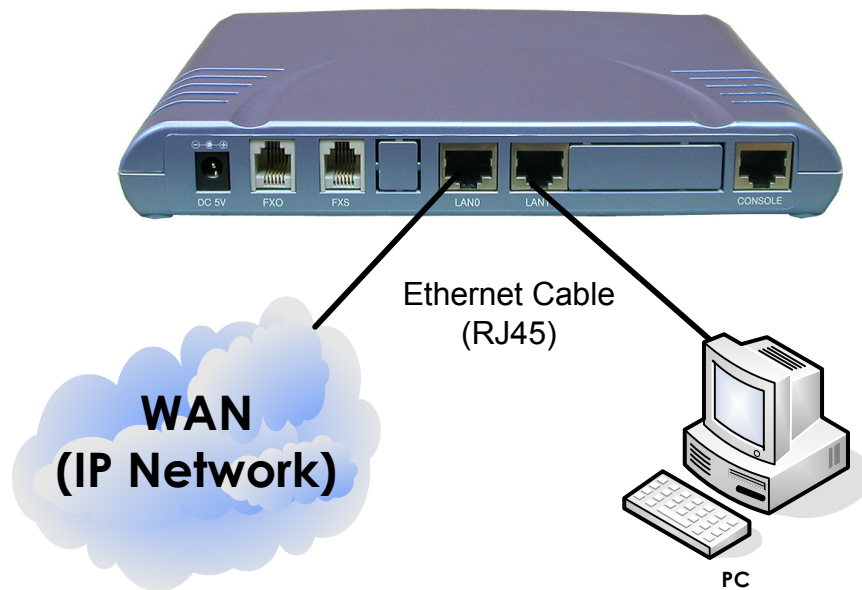


Figure 3-2: Connect VoiceFinder AP200 Gateway with WAN and normal PC

FXS Voice Interface Connection

- Connect FXS port to an analog phone with RJ11 cable.

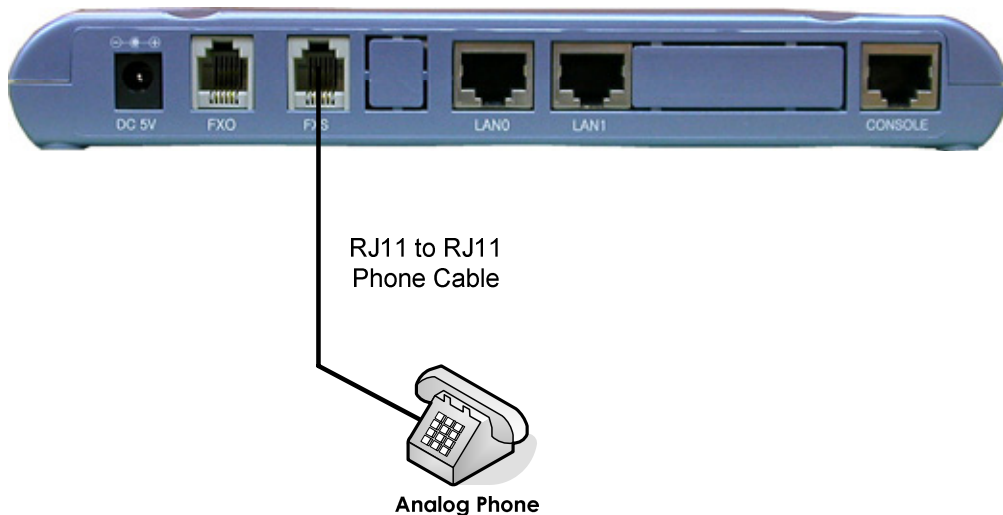


Figure 3-3: Connect VoiceFinder AP200 Gateway and a normal telephone

PSTN Interface Connection

- Connect the PSTN line to the PSTN port with RJ11 cable.

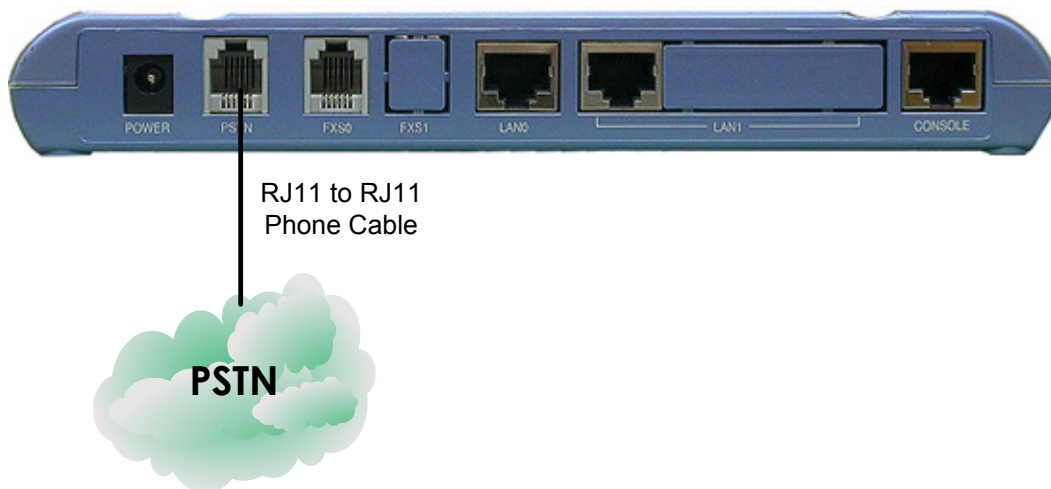


Figure 3-4: Connect VoiceFinder AP200 Gateway and a PSTN line

FXO Interface Connection

- Connect FXO Interfaces to PBX (Private Branch eXchange) with RJ11 cable.
- Applicable to the models supporting FXO Interface.

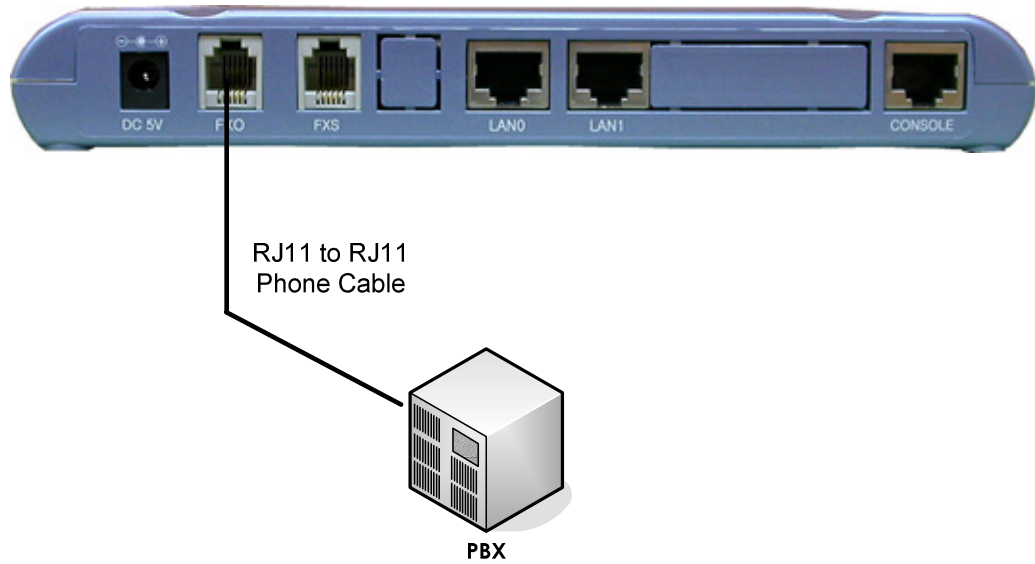


Figure 3-5: Connect VoiceFinder AP200 Gateway and PBX

VoiceFinder AP200 Interface connection example

The below figure is the interface connection example of VoiceFinder AP200 Gateway.

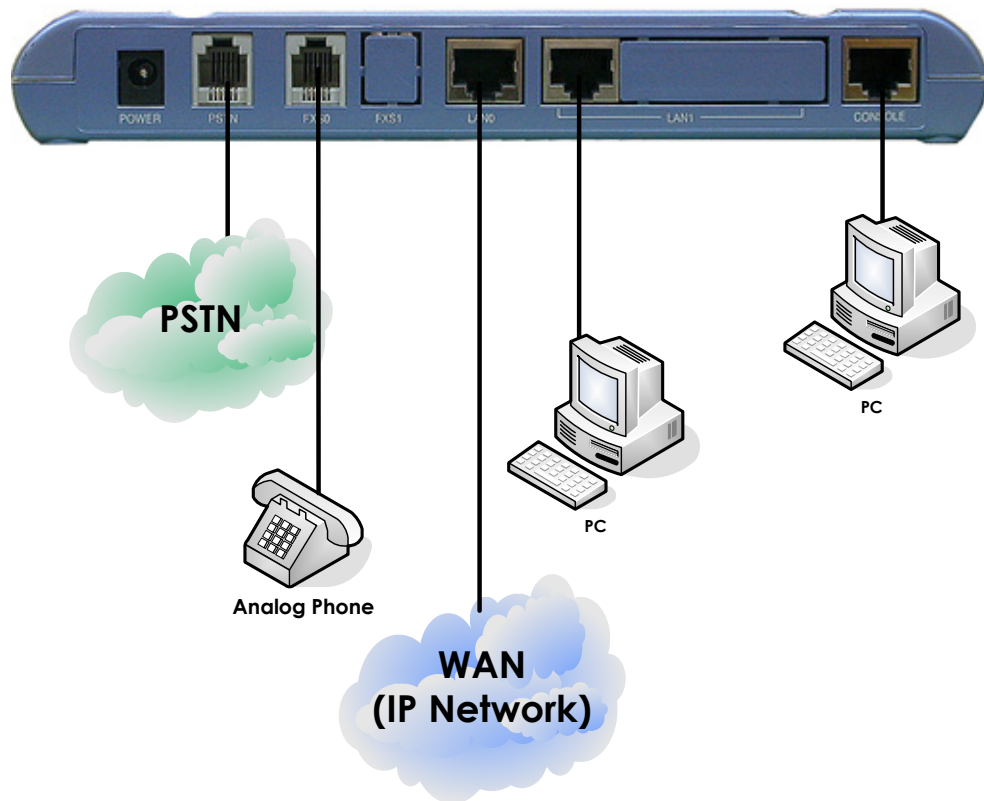


Figure 3-6: The example of interface connection

Booting

When power is supplied, the system is booted as described below

- VoiceFinder AP200 Gateway performs a self-test and checks basic operations of the CPU, the memory and interfaces.
- The boot loader is executed, and the boot loader seeks for proper software image files. The boot loader loads APOS software from the flash memory.
- If the boot loader cannot find proper software image file from the flash memory, the boot loader stands by in the boot mode until it receives proper software from the remote system. (At this time, the boot loader can download software through TFTP or FTP protocol.)
- When the software is loaded, APOS software starts to operate according to configuration information. However, if there is no configuration information, it operates according to the default values, and in this case, the operator shall set up related items for normal operation of the network.

Danger



After connecting all the interfaces, supply the power to VoiceFinder AP200 Gateway. Turn on the power after connecting the power adapter to VoiceFinder AP200 Gateway. Do not connect the adapter to the power supply before connecting it to the gateway. Also, use 110V adapter in case the power supply is 110V. However, free voltage power adapter detects both 110V and 220V, so there is no additional setting required.

Use Console terminal with HyperTerminal

- To use a PC as a Console terminal, the communication emulator application should be installed. When the PC is MS-Windows line, use the HyperTerminal Application.

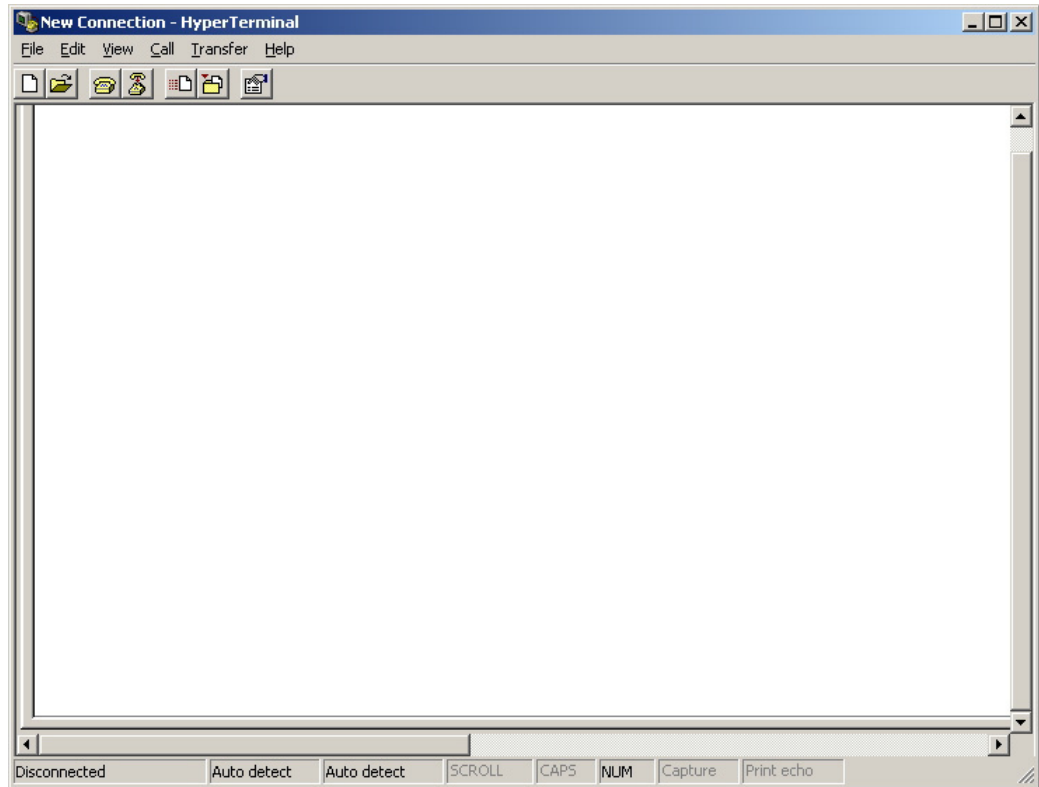


Figure 3-7: MS-Windows Communication Emulator HyperTerminal

Assign a name to the connection. “AddPac” is used at the below example.

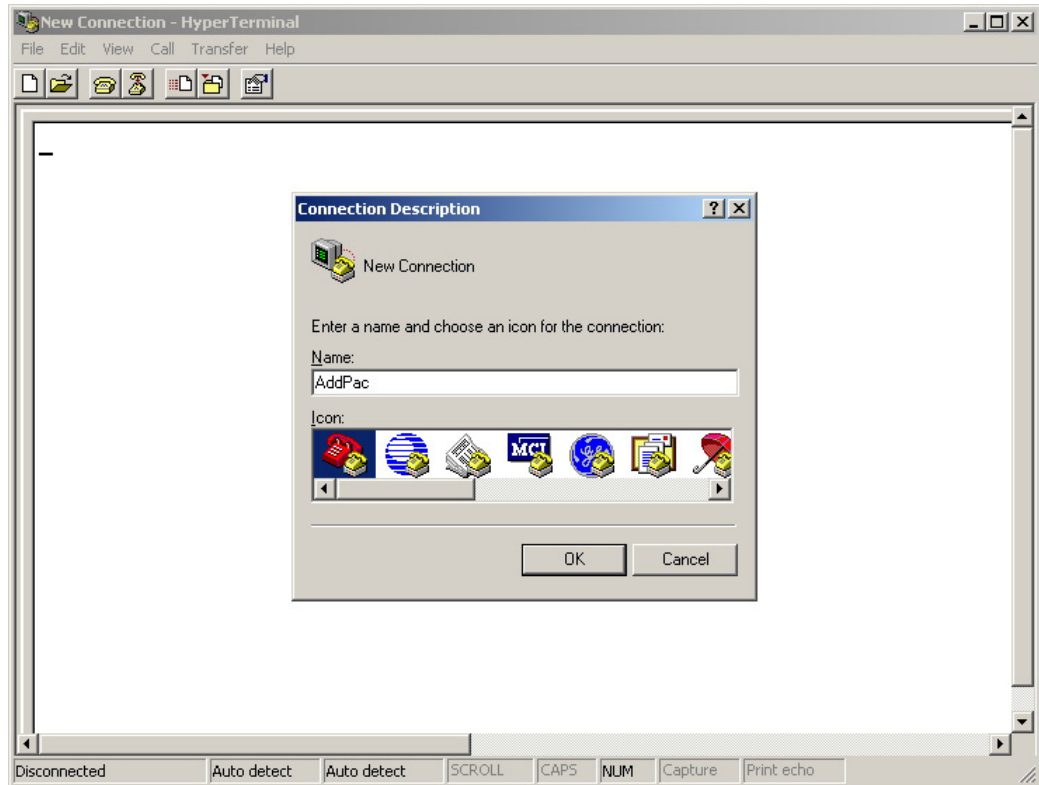


Figure 3-8: Assign a name for the new connection

- Select the interface whether the Console cable is connected. Typically, the Console cable is connected to the RS-232C 9Pin Serial Port, so select the right port according to the user environment. “COM1” is selected at the below example.

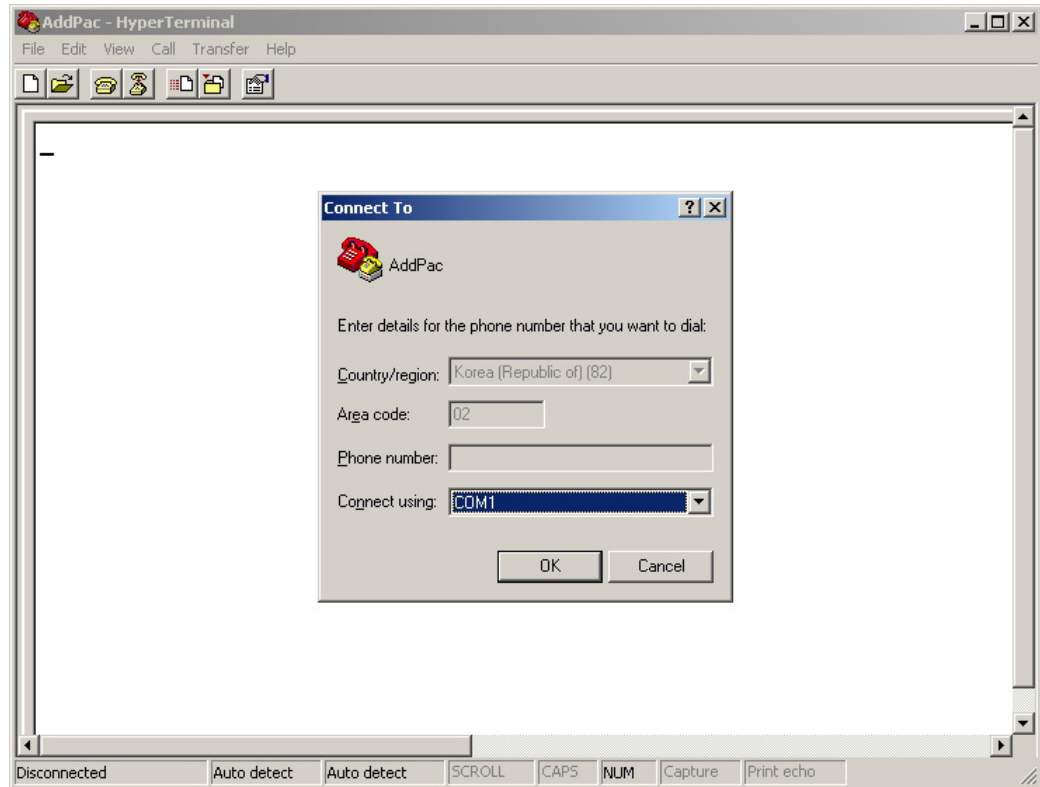


Figure 3-9: Select the interface for Console cable

- Set the port information. The below examples is based on “COM1” port.

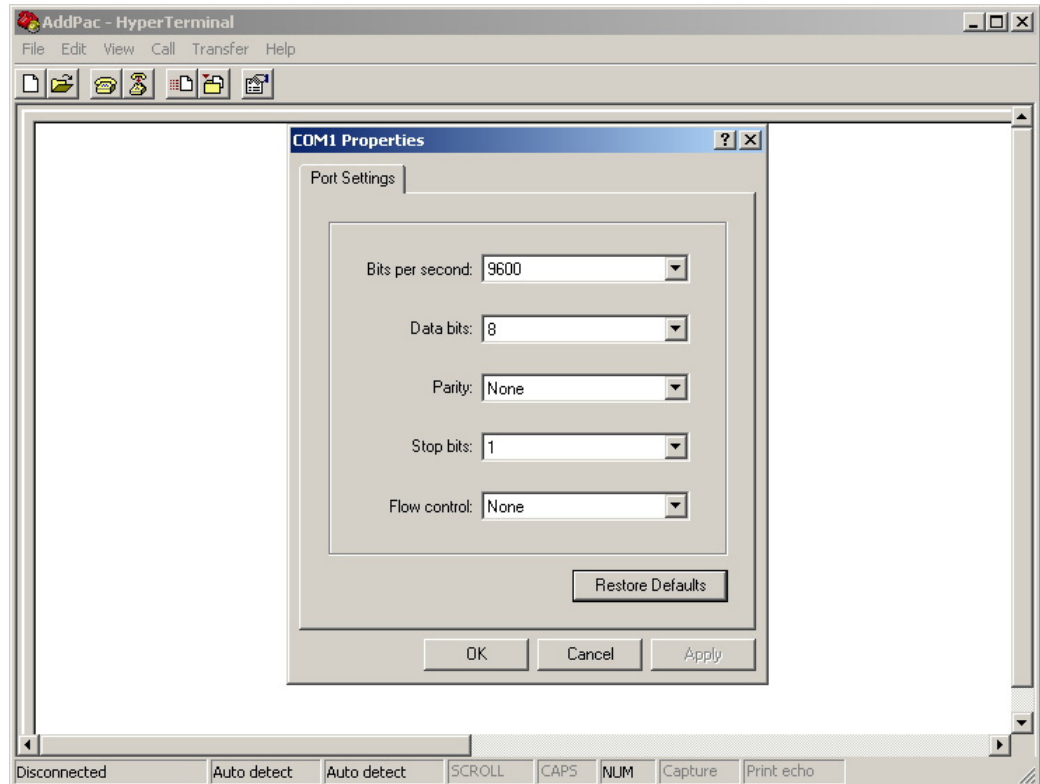


Figure 3-10: COM1 Properties

- After the configuration, press "Enter" button, then the below message will be displayed on the HyperTerminal. This message shows the routing S/W version, Gateway H/W test result, memory and etc.

```
System Boot Loader, Version 1.3.6/1
Copyright (c) by AddPac Technology Co., Ltd. Since 1999.

VoiceFinder Gateway Series (AP200)
Serial Number: AP200-010102
32BIT RISC Processor With 33554432 Bytes System Memory
524288 Bytes System Flash Memory
4194304 Bytes 2nd System Flash Memory

1 RS232 Serial Console Interface
1 Ethernet/IEEE 802.3 Interface
1 Ethernet/IEEE 802.3 or HomePNA Interface

RGW System software Revision 5.44Tg
Released at Sun Sep  3 10:32:11 2000
Program is 3494964 bytes, checksum is 0x103c5579

Local Time   : Thu Jan  1 02:01:56 1970

Copyright (c) by AddPac Technology Co., Ltd. Since 1999.

The system is not configured yet or backup data is invalid.
Please login to system as a "root" and make configuration.

Voice Module (0): FXS
Voice Module (1): FXS

DSP S/W download
Voice Module (0): .... OK
Voice Module (1): .... OK
```



```
The System is ready. Please login to system.

      login:

      Interface ethernet0.0, changed state to UP

login: root
password:*****
RGW - Login : root at Console on Thu Jan  1 03:14:59 1970

router#
```

Figure 3-11: The HyperTerminal message of VoiceFinder AP200 Gateway

- With the log-in message, input the user name “root” and the password “router”. After the log-in process, the prompt “router#” is displayed on the console terminal.
- There are two types of prompts used for VoiceFinder AP200 Gateway: “router>” and “router#”. The “>” prompt indicates that the user is not an administrator. With this prompt, the user is unable to use certain commands: particularly the configuration commands. The “#” prompt indicates that the user is an administrator (or root), and the user is authorized to use all the functions and commands.
- Log-in as “Admin” allows changing settings. Therefore, it is advised to change the default password for security purposes. Refer to Quick Operation Guide & APOS Operation Guide for password change and detailed configuration.

Chapter 4. Appendix

VoiceFinder AP200 Gateway Technical Description

This Chapter explains the supported Technical Specification of VoiceFinder AP200 VoIP Gateway.

(* means that the item is not yet implemented.)

IP Routing Service

IP Routing Protocols	Static
	IEEE 802.1Q VLAN Routing

LAN Service

Ethernet Interface	10Mbps Ethernet Interface
Configuration Management	Port Configuration
	Secondary/Subnet Support
	MTU Size Change
	ARP Entry Revalidate Function
	Transmit/Receive Connection Recovery Function

Voice over IP Service

VoIP Protocols	ITU-T H.323 v2 Protocol with ITU-T H.235 Security Feature
	Session Initiation Protocol (SIP)
	MGCP
Voice Compression	G.723.1 MP-MLQ, 6.3Kbps, 5.3Kbps
	G.729.A CS-ACELP, 8Kbps
	G.711 PCM, 64Kbps
Voice Processing	Voice Activity Detection (VAD)
	T.38 Protocol (FAX)

	Dual Tone Multi Frequency (DTMF)
	Comfort Noise Generation (CNG)
	Echo Cancellation

Network Managements

SNMP	Standard SNMP Agent MIB v2
Web	Web Based Management using HTTP Server Interface
Others	Traffic Queuing
	Frame-Relay Flow Control

Security Functions

IP Access List	Standard and Extended IP Access List, IP Packet Filtering
PPP User Authentication	Password Authentication Protocol (PAP)
	Challenge Handshake Authentication Protocol (CHAP)
Others	Access Control and Data Protections
	Enable/Disable for Specific Protocols
	Multi-level User Account Management
	Auto-disconnect for Telnet/Console Sessions

Operation and Managements

Console Port	RS-232C Based Async Serial Interface Support
Remote Management	Console, RlogIn, Telnet
System Performance Analysis	Process, CPU, and Connection Interface
APOS Management	APOS Configuration Back-up and Restore
	Remote Upgrade Function using FTP/TFTP
Others	Debugging and System Auditing
	Data Logging and Diagnostics
	System Booting, Auto-rebooting with Watch-dog Timer
	IP Traffic Statistics with Accounting

Other Scalability Features

DHCP	Dynamic Host Configuration Protocol (DHCP) Server and Relay Functions
NAT/PAT	Network Address Translation (NAT) Protocol
	Port Address Translation (PAT) Protocol
Bridging	IEEE Standard Spanning Tree Bridging Protocol
	Remote Bridging Support
	Concurrent Bridging Support
User Interface	Industry Standard Command Line Interface (CLI)
Others	Network Time Protocol (NTP) Support

Hardware Specification

Microprocessor	32bit RISC Microprocessor
Fixed Network Interface	1-Port 10Mbps Ethernet Interface for WAN (RJ45)
	1-Port 10Mbps Ethernet Interface for LAN (RJ45)
	1-Port Async Serial Interface for RS-232C Console Port (RJ45)
Fixed Voice Interface	Up-to 2-Port FXO Voice Interface (2 x RJ11)
	Up-to 2-Port FXS Voice Interface (2 x RJ11)
Memory	2MB Flash Memory
	16MB SDRAM / Main Memory (64MB expandable / at shipment)
	512KB Boot Flash Memory
System LED	LAN, Async, Power LED (Front Panel)
Power Supply	DC External Power Supply (5V x 1.2A)
Power Requirement	10 watt
Operating Temperature	0°C ~ 55°C
Storage Temperature	-40°C ~ 85°C
Relative Humidity	5% ~ 95%
Cooling Method	Internal heat resistance
Width x Height x Depth	200 x 26 x 137 (mm)
Weight	400g

Cable Specification

This Appendix provides information about the Pinout specifications of the following cables used with VoiceFinder AP200 Gateway.

- Console Port Signal and Pinout (RJ-45 to DB9)
- Ethernet Cable Assemble (RJ-45 to RJ-45) Pinout

[Console Port Signal & Pinout]

In order to connect the gateway console port with the Terminal Emulating PC, the RJ-45 to DB9 (Female DTE Connector) cable is used. The transferred signal and Pinout specifications are enlisted in the following table.

Table 4-1: The transferred signal and Pinout specification

Gateway Console (DTE)	RJ-45	DB-9	Console Device (PC)
Signal	RJ-45 Pin	DB-9 Pin	Signal
RTS	1	8	CTS
DTR	2	6	DSR
TxD	3	2	RxD
GND	4	5	GND
GND	5	5	GND
RxD	6	3	TxD
DSR	7	4	DTR
CTS	8	7	RTS

[Ethernet Cable Assemble (RJ-45 to RJ-45) Pinout]

In order to connect the gateway with other equipments (i.e. HUB), the RJ-45 to RJ-45 Ethernet Cable is used. The RJ-45 Connector Pin sequence is provided below and the transferred signal and Pinout specifications are enlisted at the below table.

Figure 4-1: 10Base-T RJ-45 Connector

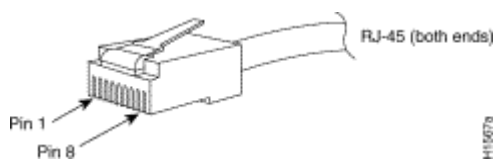


Table 4-2: Signal and Pinout of Direct Ethernet Cable

RJ-45	Signal	Direction	RJ-45 Pin
1	Tx +	→	1
2	Tx -	→	2
3	Rx +	←	3
4	-	-	4
5	-	-	5
6	Rx -	←	6
7	-	-	7
8	-	-	8

1. These specifications are for Ethernet cables connecting the gateway and the HUB.
2. For gateway to gateway or gateway to PC connection, the Cross Cable must be used.