

AP200 VoIP Gateway

High-performance, Compact Design



VoiceFinder AP200 VoIP Gateway

VoiceFinder AP200 VoIP Gateway provides high-performance voice over IP(VoIP) solution including IP-routing services for small enterprise, and other public offices as well as Internet game room and Internet based cyber apartment. Moreover, VoiceFinder AP200 VoIP Gateway maintains best voice quality under not only high bandwidth traffic but also low bandwidth traffic using the latest voice compression algorithm and enhanced QoS management features of AddPac Technologies. In addition, VoiceFinder AP200 VoIP Gateway can be used in various network environments such as leased line, ADSL, and Cable Modem networking with fixed IP and dynamic IP environments.

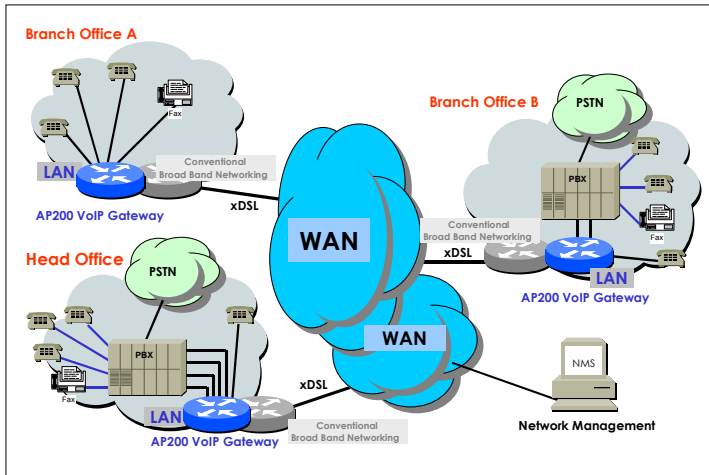
And VoiceFinder AP200 VoIP Gateway supports various network protocols such as IP-routing, bridging, PPP, NAT/PAT, and network management features such as SNMP MIB v2, Cisco-style CLI, Web, etc. This VoIP gateway typically was designed using high-performance 32bit RISC microprocessor based architecture with fixed network interface configuration:

AP200 Type - B	2-Port FXS Voice Interfaces for VoIP Service, 1-Port PSTN Back-up Service, 2-Port 10Mbps Ethernet Interface for LAN & WAN Interfaces, 1-Port RS-232C Console Port
AP200 Type - C	1-Port FXS Voice Interfaces for VoIP Service, 1-Port PSTN Back-up Service, 2-Port 10Mbps Ethernet Interface for LAN & WAN Interfaces, 1-Port RS-232C Console Port
AP200 Type - D	2-Port FXO Voice Interfaces for VoIP Service, 2-Port 10Mbps Ethernet Interface for LAN & WAN Interfaces, 1-Port RS-232C Console Port

Product Highlights

- Powerful 32bit RISC Microprocessor Architectures
- Fixed Dual 10Mbps Ethernet Interfaces
- Standard High-performance VoIP Gateway for Voice Networking Applications
- Multi-protocol Routing Solutions between WAN and LAN Access with H.323 based VoIP Protocol
- ITU-T H.323 v3 VoIP Protocol with ITU-T H.235 Security Feature
- SIP protocol support compliant with IETF RFC3261 (or RFC2543)
- H.323 and SIP dual stack support
- G.723.1,G.729A,G.711 Voice Compressions
- Support Voice Processing Features
 - VAD, DTMF,CNG,G.168, and T.38 G3 Fax Relay
- AddPac APOS Internetworking Software to provide Scalability, Functionality, Stability, and QoS Control for AddPac VoIP Gateway
- Static, Default IP-Routing and IEEE 802.1Q Routing Protocols
- Point to Point Protocol for ADSL based Broadband Network
- Enhanced QoS Managements for Voice Traffic
- SNMP v2 for Network Management Features
- Support Web based Management
- Standard & Extended Access List for Security Functions
- Essential Scalability Features such as DHCP Server & Relay, NAT/PAT, IEEE Transparent Bridging, IP Accounting, and Debugging / Diagnostics, etc.
- Remote Software Upgrade using FTP & TFTP
- Automatic APOS Image Upgrade Function
- Support Network Time Protocol(NTP)
- Cisco Style Command Line Interface(CLI)
- Graceful Compact Enclosure Design with beautiful color

Network Diagram Using AP200 VoIP Gateway



Hardware Specification

Microprocessor

- CPU 32bit RISC Microprocessor

Memory

- Flash Memory 2Mbyte
- Main Memory 16M bps High-Speed SDRAM
- Boot Memory 512Kbyte Flash Memory

Network Interface

- LAN Port (Type – B,C,D) Two(2) 10Mbps Ethernet
- Console Port One(1) RS-232C Interface

Voice Interface

- FXS Voice Interface (Type – B) 2 Port FXS Voice Interface
- FXS Voice Interface (Type - C) 1 Port FXS Voice Interface
- FXO Voice Interface (Type - D) 2 Port FXO Voice Interface
- PSTN Back-up Interface 1 Port PSTN Back-up Interface

Power & Operation Environments

- Power Requirement External Power Adaptor / VAC 110~220V, 50/60Hz, 5Watt
- Operating Temperature 0°C to + 45°C (32° to 112°F)
- Storage Temperature -40°C to + 85°C (-40° to 176°F)
- Relative Humidity 5% to 95% (Non-condensing)

Dimensions

- H X W X D (mm) 26mm X 200mm X 137mm
- Weight(g) 400g

Support Protocols & Services

IP Routing Protocols

- Static and IEEE 802.1Q VLAN Routing

WAN Protocols

- Point-to-Point Protocol (PPP) over Ethernet for ADSL Networking (PPPoE)
- Dynamic Host Configuration Protocol Networking (DHCP)

Voice over IP Service

- ITU-T H.323 v3 VoIP Protocol with ITU-T H.235 Security Feature
- SIP protocol support compliant with IETF RFC3261 (or RFC2543)
- H.323 and SIP dual stack support
- G.723.1, G.729.A, G.711 Voice Compressions
- Voice Processing Features Supports
 - VAD, DTMF, CNG, G.168 and T.38 G3 FAX Relay
- ITU-T H.323 Gateway, Gatekeeper Support
- Enhanced QoS Management Features for Voice Traffics

Network Managements

- Traffic Queuing

- Standard SNMP Agent (MIB v2) Support
- Remote Management using Console, Rlogin, Telnet
- Web based Managements using HTTP Server

Security Functions

- Standard & Extended IP Access List
- Access Control and Data Protections
- Enable/Disable for Specific Protocols
- Multi-Level User Account Management
- Auto-disconnect for Telnet/Console Sessions
- PPP User Authentication Supports
 - Password Authentication Protocol (PAP)
 - Challenge Handshake Authentication Protocol (CHAP)

Operation & Managements

- System Performance Analysis for Process, CPU, Connection I/F
- Configuration Backup & Restore for APOS Managements
- Debugging, System Auditing, and Diagnostics Support
- System Booting and Auto-rebooting with Watchdog Feature
- System Managements with Data Logging
- IP Traffic Statistics with Accounting

Other Scalability Features

- DHCP Server & Relay Functions
- Network Address Translation (NAT) Function
- Port Address Translation (PAT) Function
- Transparent Bridging (IEEE Standard) Function
 - Spanning Tree Bridging Protocol Support
 - Remote Bridging Support
 - Concurrent Routing and Bridging Support
- Cisco Style Command Line Interface (CLI)
- Load Balancing Support
- Network time Protocol (NTP) Support
- Remote Upgrade for APOS Management using FTP/TFTP

Ordering Information

- AP200-B: AP200-B Standard Configuration (2-Port FXS Only)
 - Two(2) FXS Voice Interface, Two(2) Ethernet, One(1) PSTN Back-up Interface
 - Console, 32bit RISC CPU, 2MB Flash, 32MB SDRAM,
 - APOS v5.xx with Operation Manual, External Power Supply Adaptor
 - Including CAB-LAN, CAB-CON
- AP200-C: AP200-C Standard Configuration (1-Port FXS Only)
 - One(1) FXS Voice Interface, Two(2) Ethernet, One(1) PSTN Back-up Interface
 - Console, 32bit RISC CPU, 2MB Flash, 32MB SDRAM,
 - APOS v5.xx with Operation Manual, External Power Supply Adaptor
 - Including CAB-LAN, CAB-CON
- AP200-D: AP200-D Standard Configuration (2-Port FXO Only)
 - Two(2) FXO Voice Interface, Two(2) Ethernet, One(1) Interface
 - Console, 32bit RISC CPU, 2MB Flash, 32MB SDRAM,
 - APOS v5.xx with Operation Manual, External Power Supply Adaptor
 - Including CAB-LAN, CAB-CON
- CAB-LAN : RJ45 Ethernet Cable
- CAB-CON : RJ45 RS-232C Console Cable

Contact Information

Web site : <http://www.addpac.com>

E-mail : info@addpac.com

AddPac Technology Co., Ltd.

3F, Jeong-Am Bldg., 769-12, Yeoksam-Dong
Kangnam-Gu, Seoul, 135-080, KOREA
Phone +82 2 568 3848
Fax + 82 2 568 3847

2000, AddPac is a registered trademark of AddPac Technology.
Specifications and features subject to change without notice.
All brands & products are trademarks of their respective organization.