

AP5800 256-Port Large Scale Analog VoIP Gateway



VoiceFinder AP5800 is an advanced high-capacity VoIP gateway for Next Generation Network (NGN), which can be equipped with analog voice interfaces of up to 256 ports. The analog interfaces of AP5800 present an optimal call scenario for inter-working with an analog PBX, and ensure better features and performance compared to the plain old VoIP gateways. New VoIP gateway models are not just secondary solutions but main communication solutions combined with IP-PBX; thus, you should choose an optional VoIP gateway to make the most of VoIP communications. AP5800 of AddPac Technology is a high-capacity VoIP gateway that provides analog interfaces of up to 256 ports. If you use AP5800 at regular enterprises organized into headquarters and branches, government offices, or local governments, AP5800 could function as a media gateway that inter-works with IP-PBX or as a solution that can replace a large-scale analog PBX. If you use

use AP5800 at regular enterprises organized into headquarters and branches, government offices, or local governments, AP5800 could function as a media gateway that inter-works with IP-PBX or as a solution that can replace a large-scale analog PBX. If you use AP5800 at a site where analog lines are installed for calls between the headquarters and branches by connecting the extensions of the PBX at the headquarters with a multiplexer (MUX) or a dedicated phone line, the best VoIP communications can be made while the disadvantages of the traditional phone environment are complemented. AP5800 is an NGN media gateway in terms of hardware architecture, and is designed to provide advanced services. AP5800 supports a high reliability CPU interface for redundancy optionally, and enables hot swap of CPU modules and analog subscriber modules. The front panel of this product has LEDs that allow you to check the status of lines, LAN interfaces, and CPU. Two 10/100/1000 Mbps Gigabit Ethernet ports and a RS232C console interface can provide a variety of network services through Command Line Interface (CLI). The redundant power supply is modular type and can be installed or uninstalled to ensure safety. The device is designed to support either AC input (100~220V) or DC48 selectively. The performance and reliability of AddPac VoIP gateway series have been recognized in global markets as well as the domestic market. AP5800, which is a collection of experiences and know-how accumulated in the enterprise and service provider markets, provides excellent services that meet the needs of customers that ask for high quality VoIP services. Also, this product provides better VoIP services due to the unique QoS algorithm of AddPac by ensuring Quality of Service (QoS) for SIP, MGCP VoIP call control protocols, and better calling quality. The CPU board, subscriber analog interface board, and power supply of AP5800 are modular, and can be installed or uninstalled. This product can adapt to external communication environment using large capacity high speed DDR2 memory. AP5800 allows you to flexibly enable new advanced application services such as IPv6.

Major Feature

Overall Features

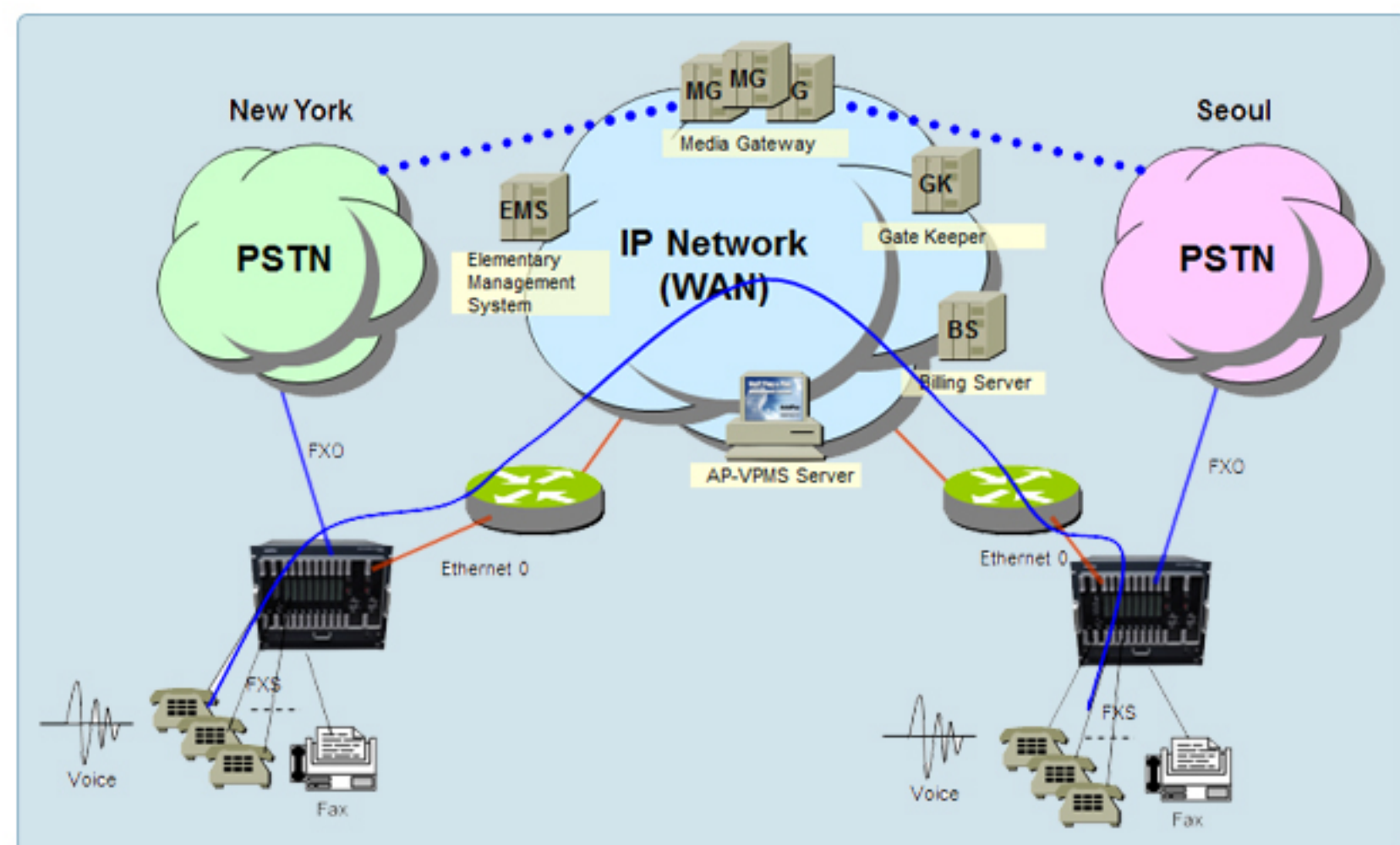
- ▶ H.323/SIP/MGCP Concurrent Stack Embedded
- ▶ High Performance RISC Microprocessor for System Control
- ▶ Dual Power Redundancy (AC, DC) selectable at ordering
- ▶ Optional Dual CPU Board Support for Active, Standby System Redundancy
- ▶ Hot-Swap Function Support
- ▶ Up to 256 Analog Interface Port (32Port Board x 8 ea) Support
- ▶ Two(2) 10/100/1000Mbps Giga-bit Ethernet Interface
- ▶ G.711/G.726/G.723/G.729, T.38 Fax , VAD, etc
- ▶ Powerful Network Protocols (PPPoE, DHCP, Static Routing, etc)
- ▶ Firmware Upgradeable Architecture
- ▶ VPMS (VoIP Plug&Play Management System) for Large Scale Deployment



32-Port Analog Module Comparison Table

Product	MGSA-FXS32	MGSA-FXS32-N1	MGSA-FXS32-N2
Distance	Long Reachable Distance for Next Generation Network Service	Short & medium Reachable Distance	Short & medium Reachable Distance
Analog Ports	32 Port FXS Module	32 Port FXS Module	32 Port FXS Module
Connector	Champ Connector	Champ Connector	8 x RJ45 Connector
Caller ID	Support	Support	Support
Hot-Swap	Support	Support	Support
DSP based Voice Codec	G.711,G.729,G.723, etc	G.711,G.729,G.723, etc	G.711,G.729,G.723, etc
Ringing Voltage	Programmable : Typical 80Vrms	65Vrms	65Vrms
REN	5	3	3

Network Diagram



AddPac Technology Co.,Ltd.

AddPac Technology (Korea-Head Office)
 Phone +8225683848
 Email sales@addpac.com