

AP-SH70 WiFi ZWave Smart Hub



AP-SH70 WiFi ZWave smart hub is an IP connectivity device for ZWave sensor devices. It uses WiFi LAN or Fast Ethernet LAN interconnection feature, providing an excellent scalability by interworking with various ZWave sensor devices. AP-SH70 smart hub and AP-SH70 application software for smart phone will help to connect to various ZWave based sensors, light switches, thermostats, and other devices. And since this smart hub is compatible with ZWave base smart sensors from various manufactures, AP-SH70 smart hub can easily add new smart sensor devices in your smart sensor network like as at home, outdoor collaboration application, etc. AddPac smart home equipment solution is to control ZWave smart home sensor devices, to control the visitor access through SIP video door phone which can be installed at the home entrance, and to monitor the smart home IP camera video with internet connectivity. AddPac smart home equipment solution consists of

smart wall pad(AP-VWP150, AP-VWP100), sip video door phones, smart hub for ZWave sensor devices, various ZWave based sensor devices, video phones for security guard, and smart pad/tab and smart phone appl, to provide an excellent scalability. AddPac AP-SH70 WiFi ZWave smart hub supports the external antenna interface for ZWave sensor interface. For indoor application like as home, small & short antenna style is recommended and this short antenna is directly connected on antenna interface connector of AddPac smart hub. AddPac supports several antennas such as AP-Z-ANT0, AP-Z-ANT1, AP-Z-ANT2 for AP-SH70 according to ZWave application, location (indoor, outdoor, basement), etc. AP-Z-ANT0 has no cable and very easy to handle. This antenna is very comfortable when AP-SH70 smart hub is installed in open space and very close to window side in home or office building when smart sensor is located in window closed area. AP-Z-ANT1 antenna has 2m cable length. So this antenna is very applicable when smart hub is installed in side of home or building and smart sensors are located in outdoor area. This antenna provides reasonable performance when smart hub installation location is also close to window side in office building. But it is little bit difficult to handle and manage because this antenna also has 2m cable length. AP-Z-ANT2 gsm antenna has 20m cable length and big antenna height comparing with previous one. This antenna is special ordering item and expensive. Normally long distance cable antenna length means antenna performance degradation due to resistance characteristic. To compensate performance degradation due to cable length, we increase the antenna height and cable diameter. This antenna is very useful for underground installation when smart hub installation location is too far to window side in office building especially. AP-SH70 RISC CPU is programmable structure so that user may use the latest features without much effort by simply setting an auto upgrade option or download from the homepage. AP-SH70 is embedded with smart web manager for easy control of smart hub. User may setup/manage smart hub through PC, smart phone, and tablet device.

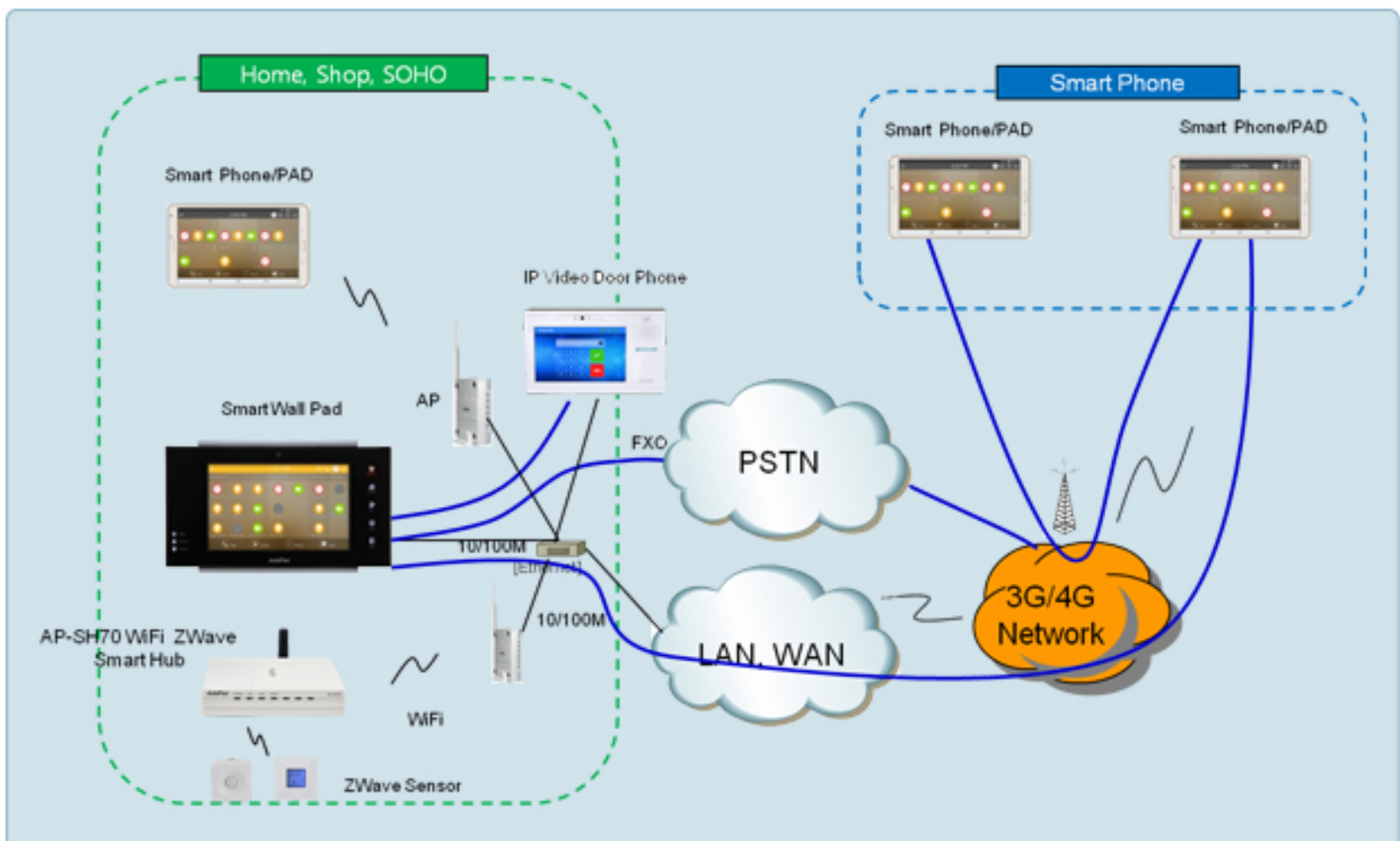
Major Feature

Overall Features

- Advanced Smart Home Solution
- ZWave Sensor Interface Support
- Smart IP Routing Service Features for Sensor Network
- Smart Wall Pad Interworking Service Features
- Smart Hub Interworking Support for Third Party
- Light SIP Call Manager and RTSP Server & Client Features
- High Performance RISC Programmable Architecture
- One(1) 10/100Mbps Fast Ethernet
- One(1) USB Port for WiFi Interface
- High Performance LAN-to-Zwave Routing Capability
- Powerful Network Protocols (PPPoE, DHCP, Static Routing, etc)
- Firmware Upgradeable Architecture
- Smart Web based Management
- Smart Phone/Tab/PAD
- Application Software (Android, IOS)
- Light and Compact Design with External Power Supply



Network Diagram



AddPac Technology Co.,Ltd.

AddPac Texhnology (Korea-Head Office)
 Phone +8225683848
 Email sales@addpac.com