

Video Conference Recording Solution



AddPac

AddPac Technology

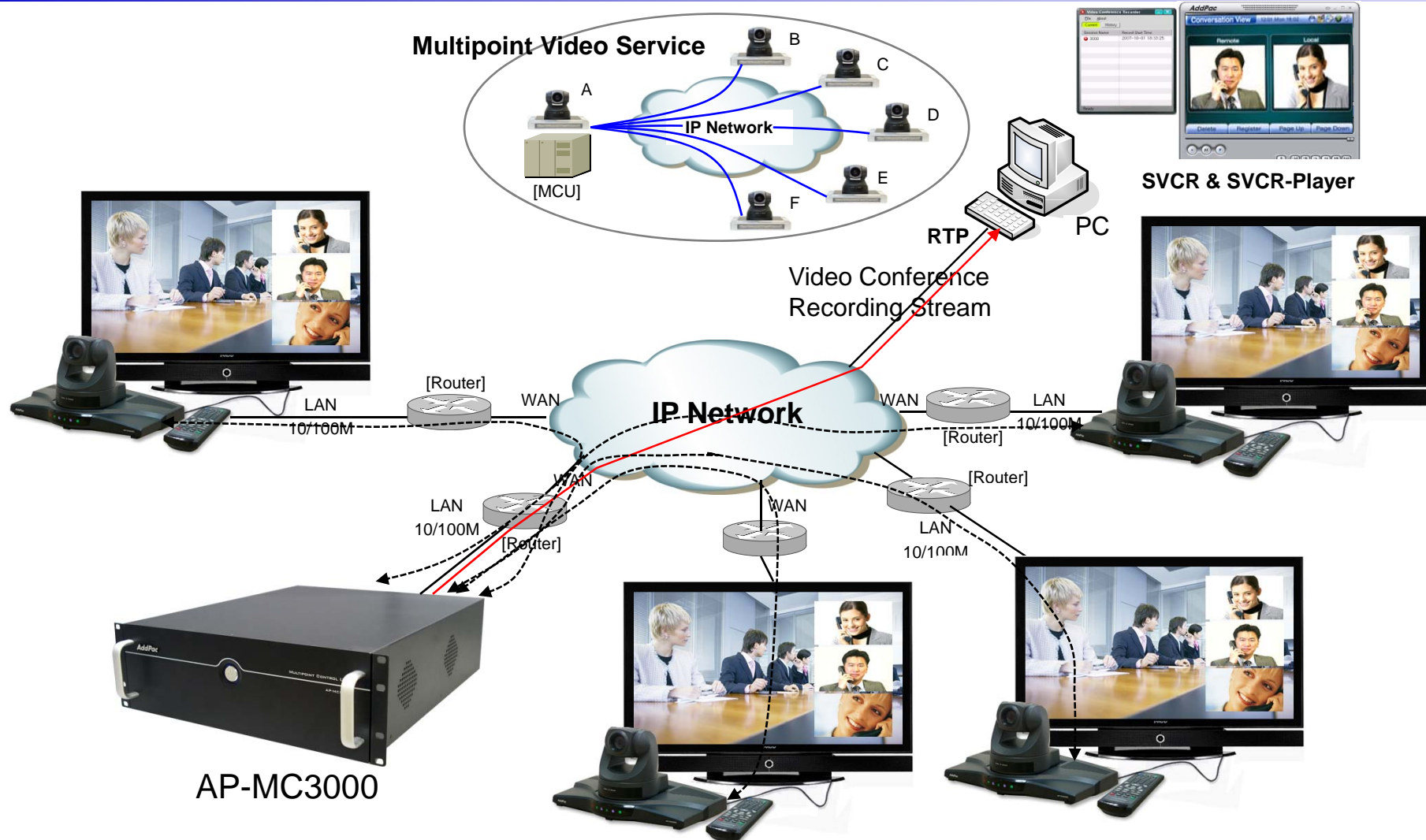
Sales and Marketing

www.addpac.com

Contents

- Video Conference Recording Network Diagram
- Smart Video Conference Recorder (SVCR) Overview
- Smart Video Conference Recorder GUI Examples
 - SVCR & SVCR-Player
 - SVCR Features
 - SVCR-Player Features
- IP Video MCU Devices for Multi-Session Video Recording
- IP Video Conference Devices

Video Conference Recording Network Diagram



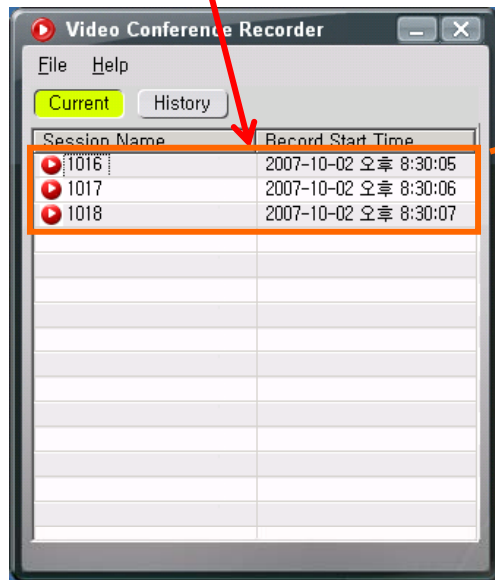
Smart Video Conference Recorder (SVCR) Overview

- Digital Video Conference Recoding (Audio/Video) Solution(AddPac MCU and PC)
- Multi-Session Recording Support
- Video Downstream & Recording from AddPac MCU
- PC based Video Conference Recording (HDD, etc.)
- Session Monitor & Recording
- Live Stream Play
- Recorded Video Conference File Playback
- MS-Window Application
- High-performance Audio & Video Codec Support
 - Up to 30 frame/sec MPEG-4(QVGA, VGA<future>),

SVCR & SVCR-Player

- Video Conference Recording & Monitoring

Current Conference Session



Double Click!
Player Popup !



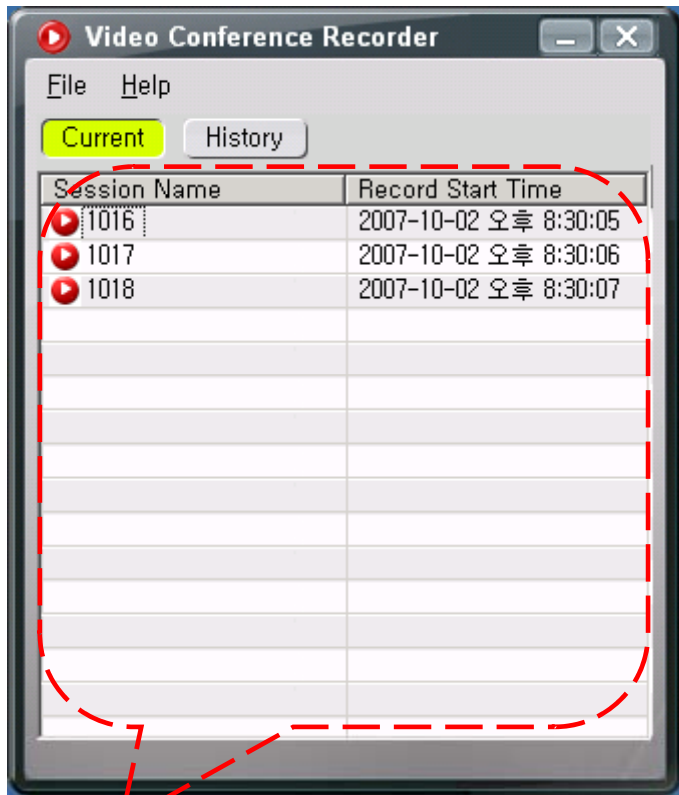
Smart Video Conference Recorder

SVCR-Player

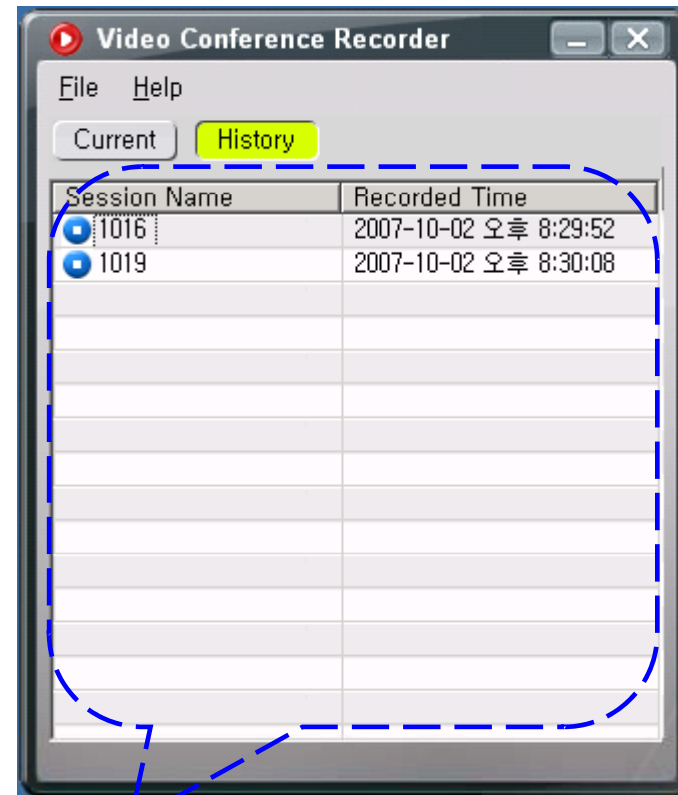
SVCR Features

- Video Conference Recording in PC Local Storage
- Multi-Session Recording
- Recording Video in PMA(AddPac Proprietary Format) File Format
- History Function of recorded Conference Session
- MS- Window Application

SVCR Features



Current Recording Session List

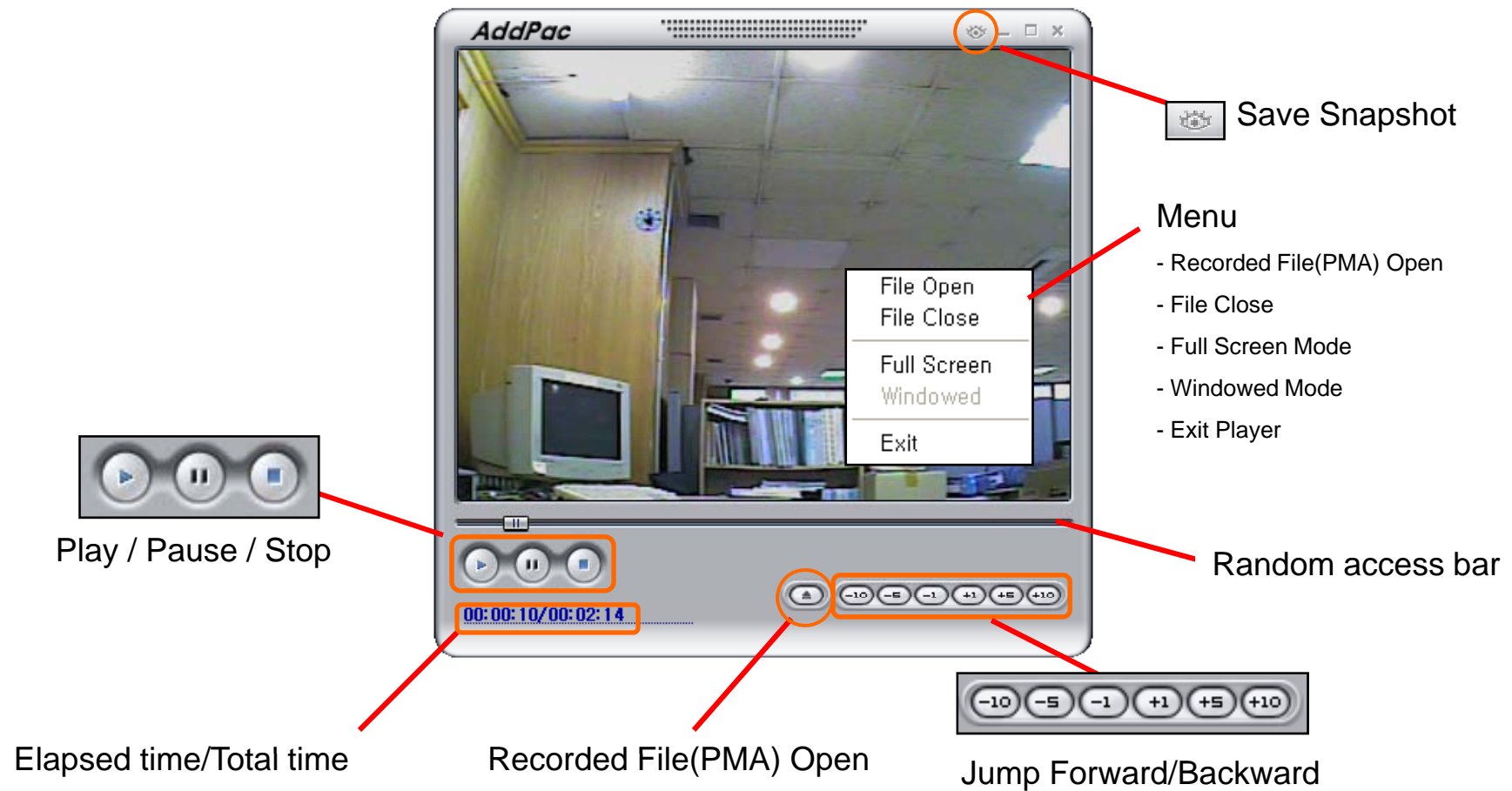


Recorded Session History

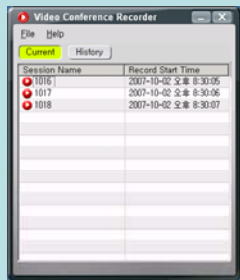
SVCR-Player Features

- Live Session (Stream) Play
- Multi-Session Play
- Random Access in Playing Live Session
- Recorded File Playback
- High-performance Audio & Video Codec Support
 - Up to 30 frame/sec
 - MPEG-4(QVGA, VGA<future>)
- MS-Window Application

SVCR-Player Features



SVCR & SVCR-Player



SVCR

Video Conference Recording in PC Local Storage

Multi-Session Recording

Recording Video in PMA (AddPac Proprietary Format) File Format

History Function of recorded Conference Session

MS-Window Application

Live Session (Stream) Play

Multi-Session Play

Random Access in Playing Live Session

Recorded File Playback

High-performance Audio & Video Codec Support
Up to 30 frame/sec, MPEG-4(QVGA, VGA<future>)

MS-Window Application







SVCR-Player



IP Video MCU Devices for Multi-Session Video Recording





IP Video MCU Comparison Table

	AP-MC5000	AP-MC3000	AP-MC2000	AP-MC1800
				
Video Codec	H.263 MPEG4 H.264	H.263 MPEG4 H.264	H.263 MPEG4 H.264	H.263 MPEG4 H.264
Signaling	H.323/SIP	H.323/SIP	H.323/SIP	H.323/SIP
Voice Codec	G.722/G.711/G.726/ G.729/G.723, etc	G.722/G.711/G.726/G. 729/G.723, etc	G.722/G.711/G.726/G. 729/G.723, etc	G.722/G.711/G.726/G.72 9/G.723, etc
Party Number	64	32	16	4/8
Multi-Session	Support	Support	Support	Support
Conference Mode	Add-Hoc, Dial-Out, Meet Me	Add-Hoc, Dial-Out, Meet Me	Add-Hoc, Dial-Out, Meet Me	Add-Hoc, Dial-Out, Meet Me
H.323 GateKeeper	Support	Support	Support	Support
Conference Video Recording	Support	Support	Support	Support
LAN Port	2	2	1	1
Power Duplication	Support	N/A	N/A	N/A





IP Video Conference Devices




HD Video Codecs (Built-in Camera)

Product		AP-HVC1000	AP-HVC700	AP-HVC600	AP-HVC500
					
Camera Sensor		CMOS	CCD	CMOS	CCD
Optical Zoom		x10	x18	x10	x18
Video Resolution		Full HD : 720P, 1080i	HD : 720P(1280x720)	Full HD : 720P, 1080i	HD :720P(1280x720)
Channel One(1)	Video Input	Built-in Full HD Camera	Built-in HD Camera	Built-In Full HD Camera, Composite, HD-SDI, RGB, HDMI	Built-In HD Camera, Composite, HD-SDI, RGB, HDMI
	Video Output	Composite, Component, HDMI	Composite, Component, HDMI	Composite, Component, HDMI	Composite, Component, HDMI
	Audio Input	Stereo RCA Type	Stereo RCA Type	Stereo RCA Type	Stereo RCA Type
	Audio Output	RCA Type Audio (L,R)	RCA Type Audio (L,R)	RCA Type Audio (L,R)	RCA Type Audio (L,R)
PTZ Control		N/A	N/A	Support	Support
Channel Two(2)	Video Input	Composite RCA, HD-SDI, RGB, HDMI	Composite RCA, HD-SDI, RGB, HDMI	N/A	N/A
	Video Output	Composite, Component, HDMI	Composite, Component, HDMI		
	Audio Input	Stereo RCA Type	Stereo RCA Type		
	Audio Output	RCA Type Audio (L,R)	RCA Type Audio (L,R)		
PTZ Control		Support	Support		
LAN		One(1) 10/100M Ethernet	One(1) 10/100M Ethernet	One(1) 10/100M Ethernet	One(1) 10/100M Ethernet
Power		External Power Adaptor	External Power Adaptor	External Power Adaptor	External Power Adaptor




HD Video Codecs (Built-in Camera)

Product	AP-HVC200	AP-HVC300
		
Sensor	CCD	CMOS
Optical Zoom	x18	x10
Video Resolution	HD 720P(1280x720)	Full HD 720P, 1080i
Video Output	HDMI Component, RCA	HDMI, Component, RCA
Audio Out	Stereo Left, Right RCA Out	Stereo Left, Right RCA Out
Audio In	MIC/Audio In, 3.5mm Audio Input	MIC/Audio In, 3.5mm Audio Input
LAN	One(1) 10/100M Ethernet	One(1) 10/100M Ethernet
Power	External Power Adaptor	External Power Adaptor

Full HD Video Conference Codecs

Product		AP-HCC2000	AP-HCC1000	AP-HVC500
				
Video Resolution		720P, 1080i(60), 1080p(30)	720P, 1080i(60), 1080p(30)	720P, 1080i(60), 1080p(30)
Channel One(1)	Video Input	Composite RCA, HD-SDI, HDMI	Composite RCA, HD-SDI, HDMI	Composite RCA, HD-SDI, RGB, HDMI
	Video Output	Composite RCA, Component, HDMI	Composite RCA, Component, HDMI	Composite RCA, Component, HDMI
	Audio Input	Stereo RCA Type	Stereo RCA Type	Stereo RCA Type
	Audio Output	RCA Type Audio (L,R)	RCA Type Audio (L,R)	RCA Type Audio (L,R)
PTZ Control		Support, RS232C	Support, RS232C	Support
Channel Two(2)	Video Input	Composite RCA, HD-SDI, RGB, HDMI	Composite RCA, HD-SDI, RGB, HDMI	N/A
	Video Output	Composite RCA, Component, HDMI	Composite RCA, Component, HDMI	
	Audio Input	Stereo RCA Type	Stereo RCA Type	
	Audio Output	RCA Type Audio (L,R)	RCA Type Audio (L,R)	
PTZ Control		Support, RS232C	Support, RS232C	
Video MCU		4-Party Video MCU	N/A	N/A
LAN		One(1) 10/100/1000M Gigabit Ethernet	One(1) 10/100/1000M Gigabit Ethernet	One(1) 10/100/1000M Gigabit Ethernet
Power		External Power Adaptor	External Power Adaptor	External Power Adaptor

SD Video Codecs (Built-in Camera)

Product		AP-SVC700	AP-SVC500	AP-SVC200
				
Camera Sensor		CCD	CCD	CCD
Optical Zoom		x27	x27	x27
Codec Video Resolution		SD (D1, VGA)	SD(D1, VGA)	SD(D1, VGA)
Display Video Resolution		HD	HD	HD
Channel One(1)	Video Input	Built-in SD Camera	Built-In SD Camera or Composite	Built-In SD Camera
	Video Output	Composite, Component, HDMI	Composite, Component, HDMI	Composite, Component, HDMI
	Audio Input	Stereo RCA Type	Stereo RCA Type	Stereo RCA Type
	Audio Output	RCA Type Audio (L,R)	RCA Type Audio (L,R)	RCA Type Audio (L,R)
	External PTZ Control	N/A	Support	N/A
Channel Two(2)	Video Input	Composite RCA, RGB, HDMI	N/A	N/A
	Video Output	Composite, Component, HDMI		
	Audio Input	Stereo RCA Type		
	Audio Output	RCA Type Audio (L,R)		
	External PTZ Control	Support		
LAN		One(1) 10/100M Ethernet	One(1) 10/100M Ethernet	One(1) 10/100M Ethernet
Power		External Power Adaptor	External Power Adaptor	External Power Adaptor

SD Video Codecs

Model	AP-VC2000	AP-VC1000	AP-VC200
Specification			
Audio/Video Port	Two(2) Channel	One(1) Channel	One(1) Channel
Camera	External	External	Internal CCD
Video Codec	H.263 MPEG4 H.264	H.263 MPEG4 H.264	H.263 MPEG4 H.264
Video Resolution	SD	SD	SD
Signaling	H.323/SIP	H.323/SIP	H.323/SIP
Video MCU	4-Party Video MCU	N/A	N/A
PSTN Interface	1-Port FXS	1-Port FXS	1-Port FXS, 1-Port FXO
LAN Port	2	2	2
Console Port	1	1	1
Power	External Power Adaptor	External Power Adaptor	External Power Adaptor



Thank you!

AddPac Technology Co., Ltd.
Sales and Marketing

Phone +82.2.568.3848 (KOREA)
FAX +82.2.568.3847 (KOREA)
E-mail sales@addpac.com