

AP-EVP100

Emergency Call IP Video Phone

High Performance IP Video Phone Solution for Emergency Call



Preliminary Product Overview

(Without notice, following described technical spec. can be changed)

AddPac

AddPac Technology

Sales and Marketing

www.addpac.com

Contents

- Product Overview
- Hardware Specification
- Software Service
- Audio & Voice Service
- Video Service & Features
- Network Service and Features
- Smart Web Manager (Example)
- Application Area
- Ordering Information

Product Overview

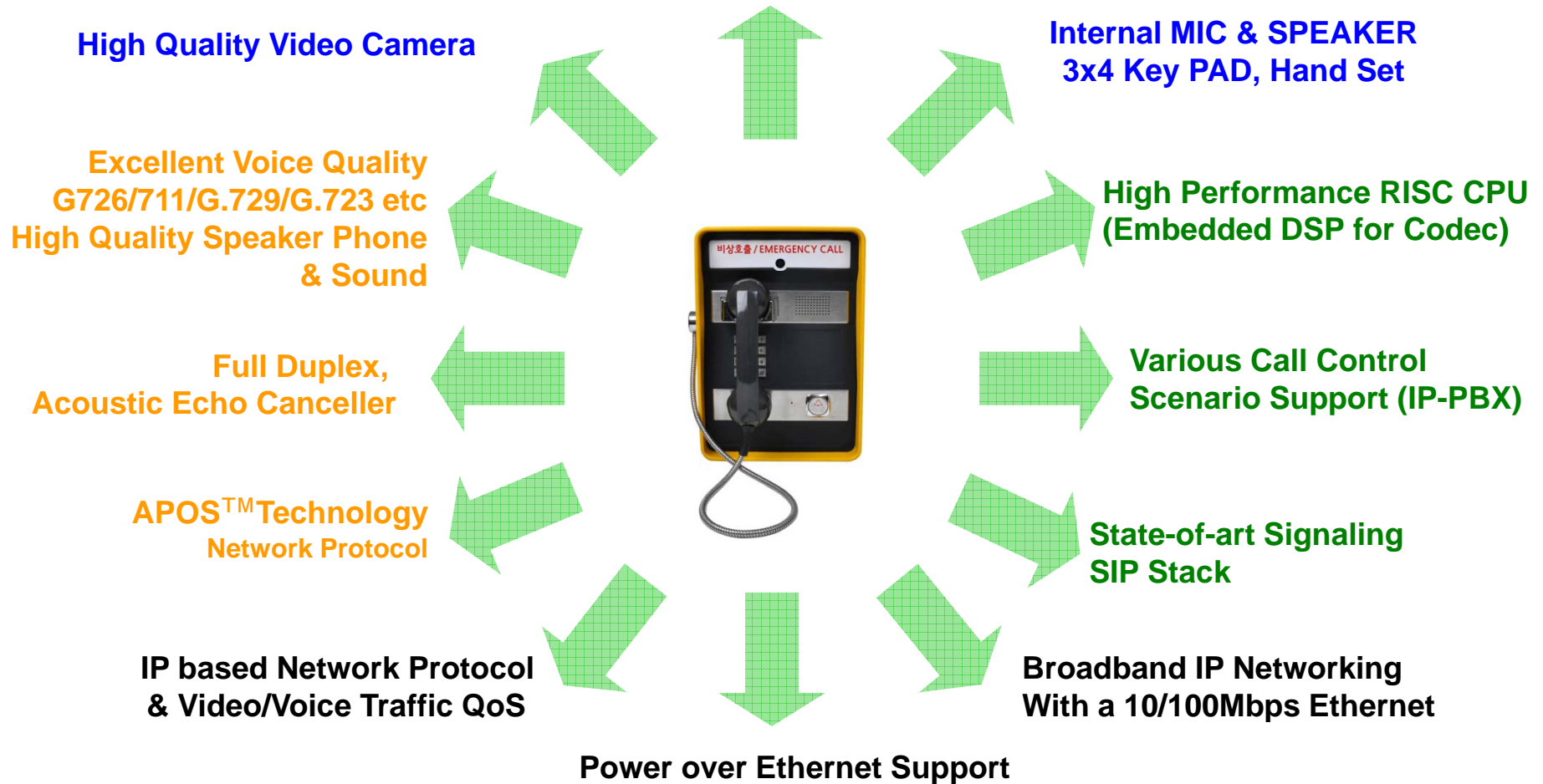
AP-EVP100 Emergency IP Video Phone

- Emergency IP Video Phone Solution
- High-performance Video, Audio and Voice Service
- SIP VoIP Signaling Stack Embedded
- High-performance Video/Voice Codec Support
 - H.264/MPEG4, G.711, etc
- One(1) 10/100Mbps Fast Ethernet
- PoE(Power over Ethernet) Support
- High Quality Speaker Phone Features
- Powerful Acoustic Echo Canceller Chip Embedded
- Powerful Network Protocols (PPPoE, DHCP, Static Routing, etc)
- Firmware Upgradeable Architecture
- VVoIP Solution with Outstanding Network Service Capability
- Audio/Video Privacy Protection

Product Highlights

AP-EVP100 Emergency IP Video Phone

High Performance Emergency IP Video Phone Solution



Multimedia Service

AP-EVP100 Emergency IP Video Phone



- APOS : AddPac Internetworking Operating System
- OSD : On- Screen Display
- EMS : Element Management System

Hardware Specification

AP-EVP100 Emergency IP Video Phone

- RISC+DSP Microprocessor Computing Power (Dual Processor Architecture)
- Video Camera Interface
- Audio and Voice Interface
 - Internal MIC
 - Internal Speaker
 - Hand Set, On/Off Hook
 - 3 x 4 keyPAD
- Emergency Call Button
- Network Interface
 - One(1) 10/100Mbps Fast Ethernet
- Power Supply
 - Power over Ethernet



Hardware Specification

AP-EVP100 Emergency IP Video Phone

Hardware Specifications

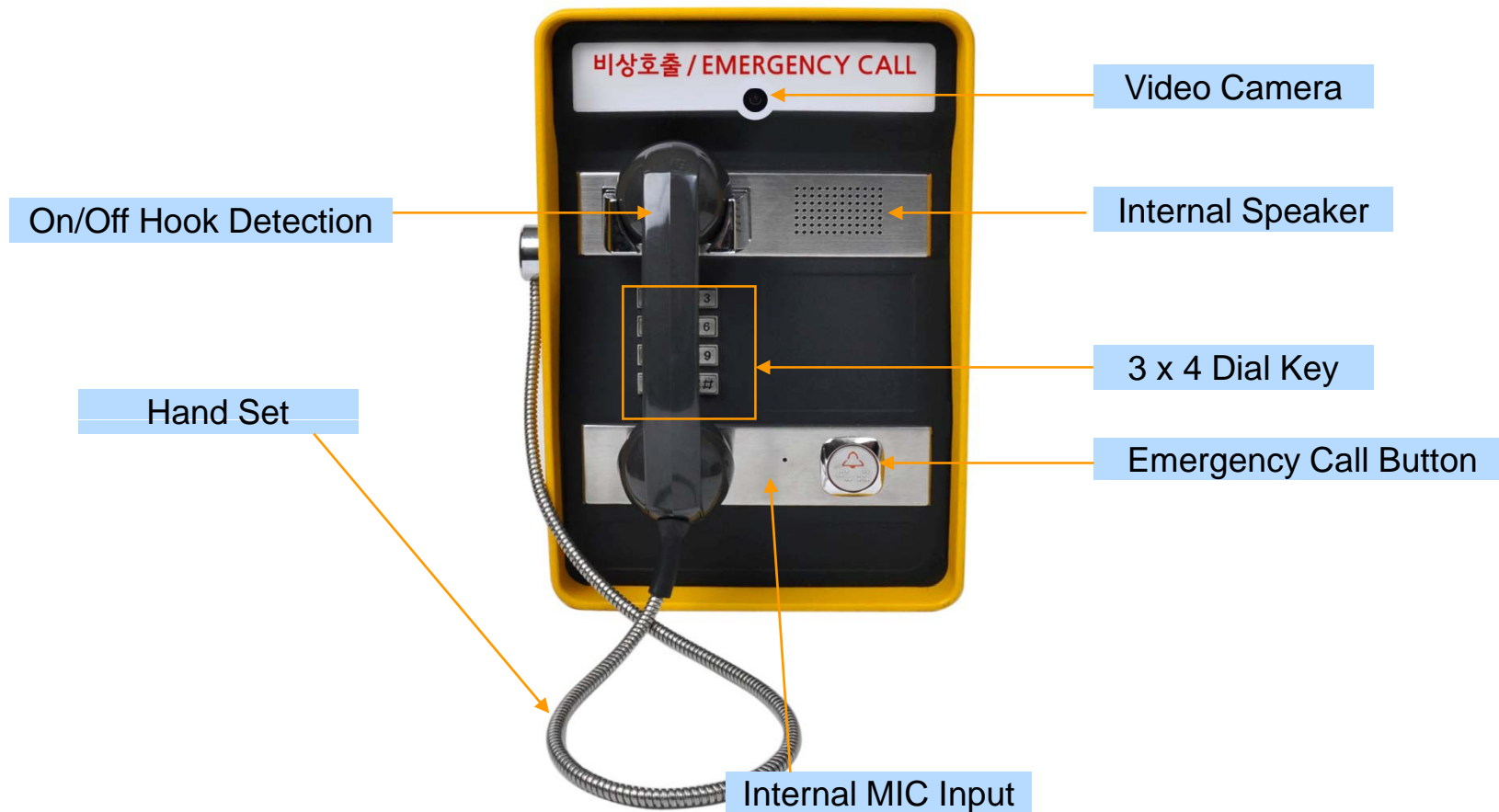
AP-EVP100 IP Video Phone	Basic Specifications
CPU	RISC+ DSP Microprocessor
Ethernet Interface	1-Ports 10/100Mbps Ethernet Interface(RJ-45)
Flash Memory	512Mbyte NAND FLASH
Base Memory	128Mbyte DDR
Power Requirement	Power over Ethernet, 12Watt
Operating Temperature	0°C ~ 45°C (32 °F ~ 122°F)
Storage Temperature	-40°C ~ 85°C (-40°C ~ 185°F)
Relative Humidity	5% ~ 95% (Non-condensing)
Dimensions	235mm x 350mm x 80mm (W x H x D)
Weight (g)	4.3 Kg



Hardware Specification

AP-EVP100 Emergency IP Video Phone

Front Side



Hardware Specification

AP-EVP100 Emergency IP Video Phone

Bottom Side



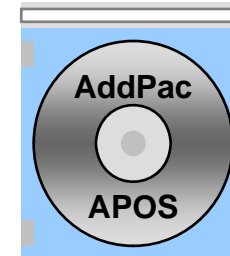
Outlet for LAN cable



Software Service

AP-EVP100 Emergency IP Video Phone

- Built-in AddPac APOS Internetworking Software
 - Scalability, Functionality, and Stability Features
 - Audio Traffic QoS Control
- Programmable Video, Audio, and Voice Services
 - Video, Audio, and Voice Codec
- Firmware Upgradeable Architecture
- Industry Standard IP based Network Protocol Features



Video Service and Features

AP-EVP100 Emergency IP Video Phone

- High-performance Video Codec Support
 - H.264, MPEG4, etc
- Image Resolution Support
 - Video Encoding : VGA(640x480), QVGA(320x240)
- Up to 30fps with VGA Resolution
- 128Kbps to 1Mbps Operating Video Traffic Bandwidth
- Rate Control for Video Traffic QoS
 - Ensuring Optimized Quality
 - Frame Rate with Limited Bandwidth
- High-end Error Resilient Against Various Packet Error

Network Service and Features

AP-EVP100 Emergency IP Video Phone

- Network Managements
 - Standard SNMP Agent (MIB v2) Support
 - Remote Management using Console, Telnet
 - Web based Management using HTTP Server Interface
- Security Functions
 - Standard & Extended IP Access List
 - Enable/Disable for Specific Network Protocols
 - Multi-level User Account Management
 - Auto-disconnect for Telnet/Console Sessions
 - PPP User Authentication Supports (PAP & CHAP)
- Operation & Managements
 - System Performance Analysis for Process, CPU, Connection Interface
 - Debugging, System Auditing, and Diagnostics Support
 - System Booting and Auto-rebooting with Watchdog Feature
 - System Managements with Data Logging
 - IP Traffic Statistics with Accounting

Network Service and Features

AP-EVP100 Emergency IP Video Phone

- Network Managements
 - DHCP Server & Relay Functions
 - Network Address Translation (NAT) Function
 - Port Address Translation (PAT) Function
 - Transparent Bridging (IEEE Standard) Function
 - Spanning Tree Bridging Protocol Support
 - Remote Bridging Support
 - Concurrent Routing and Bridging Support
 - Cisco Style Command Line Interface (CLI)
 - Network time Protocol (NTP) Support

Smart Web Manager

AP-EVP100 Emergency IP Video Phone

- Main Screen
- System
 - Language
 - LAN Setup
 - DACS
 - Display
 - File Browser
- SIP Call & Media
 - SIP (Session Initiation Protocol)
 - Speed Dial
 - Media
- Miscellaneous
 - Door Control and Test
 - Network Test

Smart Web Manager : SIP configuration

AP-EVP100 Emergency IP Video Phone

SIP (Session Initiation Protocol)

SIP server check if exist.

Use SIP Server Yes No

SIP Basic Information Display

Primary SIP Server Server address and Port (default 5060)

Secondary SIP Server Server address and Port (default 5060)

Local Domain Name (SIP userpart of authentication)

SIP Signaling Port (default 5060, between 1 to 65535)

Register Expiration (in seconds, default 60, between 10 to 86400)

Session Re-Fresh INVITE UPDATE

Session Expire Time (in seconds, default 1800, between 30 to 86400, 0 = disable)

Min-SE (in seconds, default 1800, between 30 to 86400)

Telephone Line Number and Password Configuration Same Information is used when DACS is connected

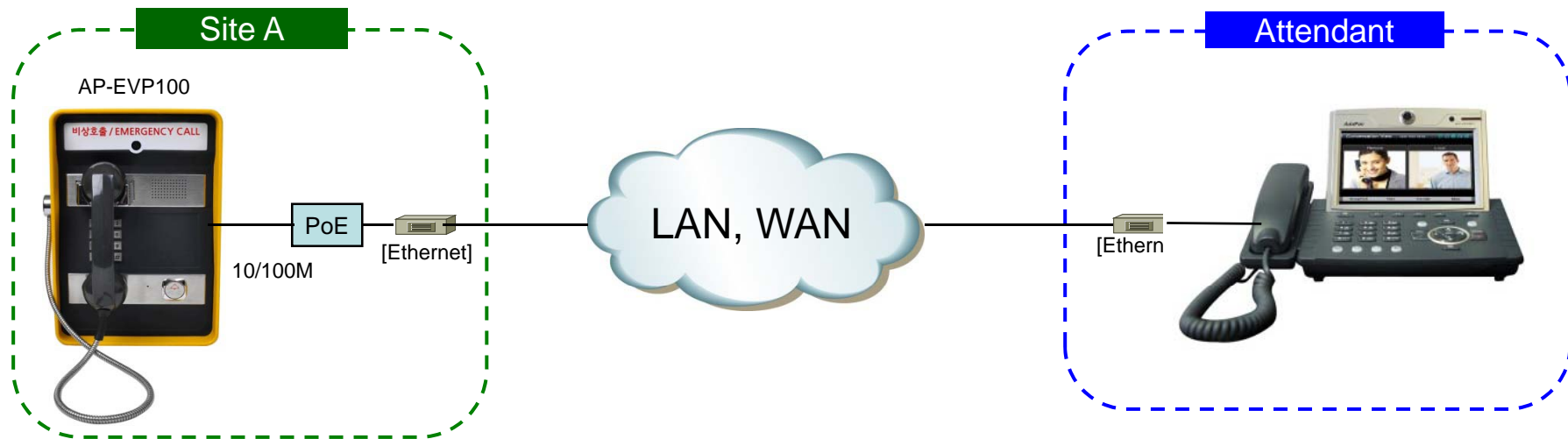
Extension Extension Number, Password

AP-EVP100 Emergency IP Video Phone

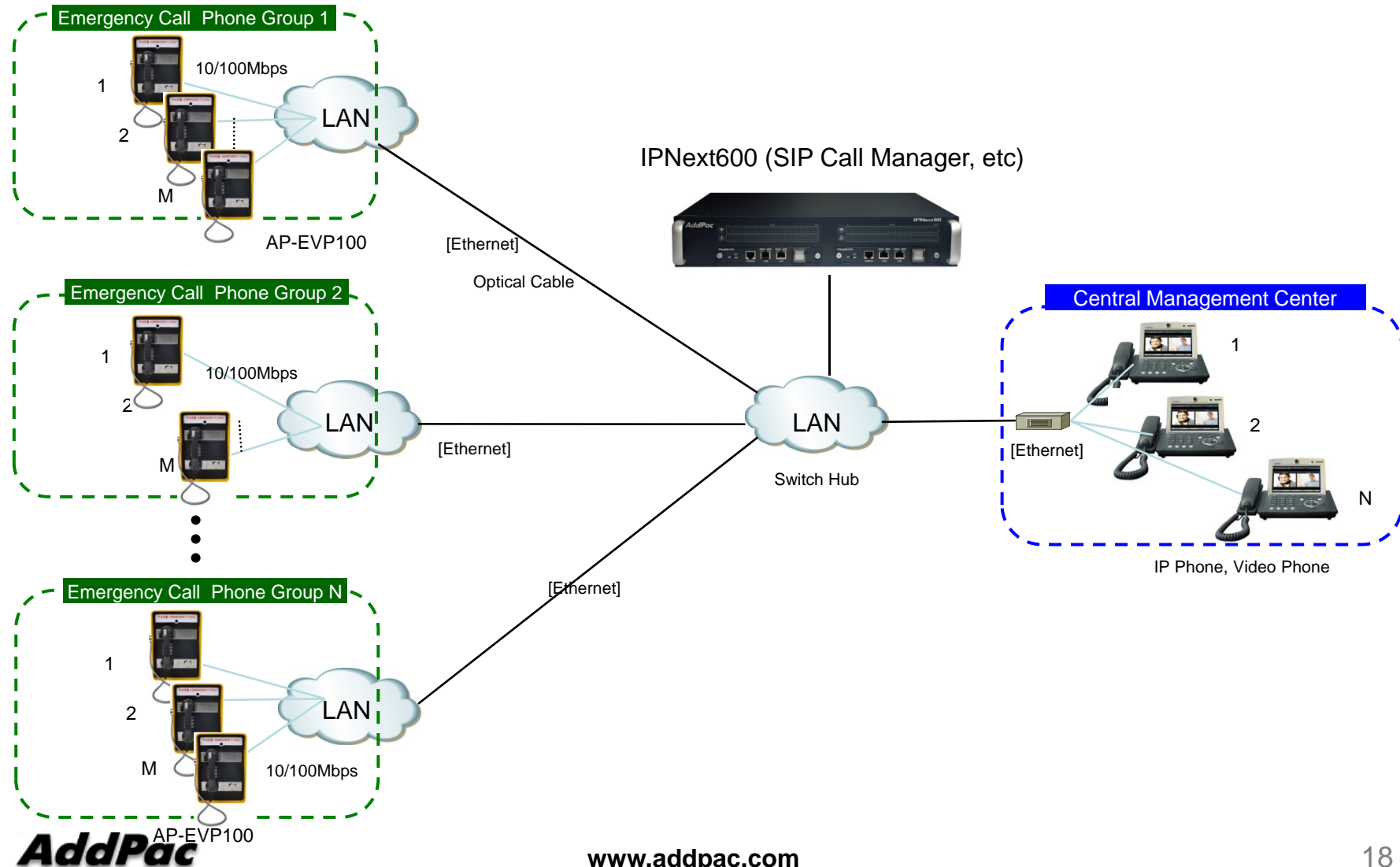
Application Area

- Point-to-Point Application (Simple Application)
- Point-to-Multipoint Application
 - All AddPac Solution
(Call Manager + Door Access Control Server)
 - Legacy PBX Environment
 - Legacy IP-PBX Environment

Point-to-Point Connection (Simple Appl.)

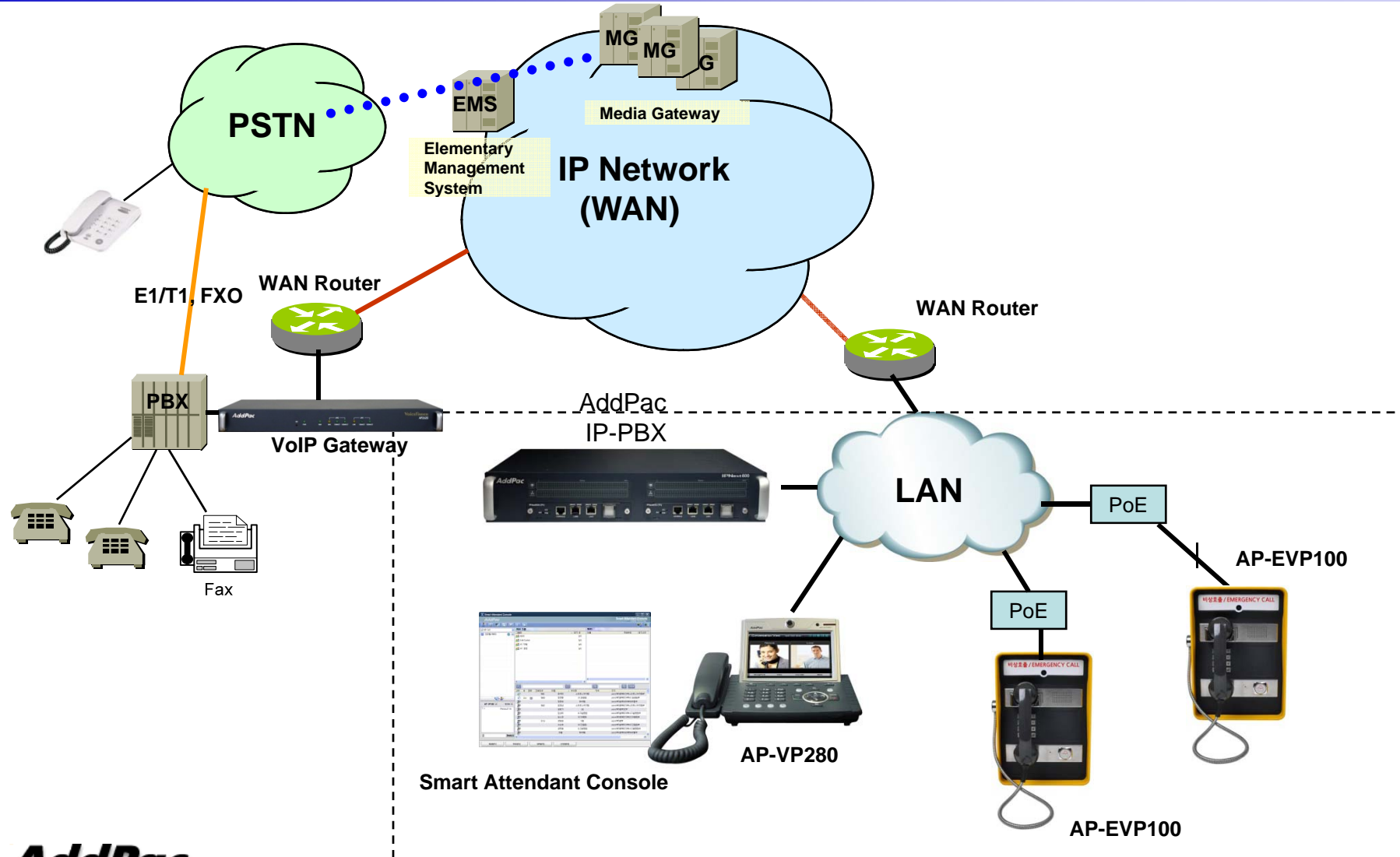


Point-to-Multipoint Connection



Standard IP-PBX Application

AP-EVP100 Emergency IP Video Phone



Ordering Information

- AP-EVP100 Emergency IP Video Phone Hardware
 - AP-EVP100 Emergency IP Video Phone Main Body
 - RISC Microprocessor with Embedded DSP Architecture
 - Wide Angle Video Camera
 - Internal Speaker, MIC, 3x4 KeyPAD, Hand Set
 - Emergency Call Button
 - One(1) 10/100Mbps Fast Ethernet
- Built-in APOS Internetworking Software for AP-EVP100
- Including 1 Year Hardware Warranty
- Product Documents
 - Install and Operation Guide (PDF)
- Pricing
 - AddPac Technology Regional Sales Manager
 - Authorized Sales and Marketing Representatives
 - Please Contact www.addpac.com



Thank you!

AddPac Technology Co., Ltd.
Sales and Marketing

Phone +82.2.568.3848 (KOREA)

FAX +82.2.568.3847 (KOREA)

E-mail sales@addpac.com