

AddPac GSM VoIP Gateway AP-GS708S

Available in Pakistan



VoiceFinder AP-GS708S 8-Port GSM VoIP gateway provides high-performance IP to GSM gateway solution including IP-routing services for small enterprise, and other public offices. This product uses the state-of-art technology voice compressed algorithm and unique QoS algorithm of AddPac to maintain the maximum voice quality under fast internet line and slow internet line as well. This product is designed based on high performance RISC CPU + DSP structure; supports upgraded speed, the best quality product, offers various user-friendly functions, manufactured at low cost and this product gives high performance for its price. Designed on programmable high performance RISC Integrated DSP Technology, AP-GS708S is capable of adopting new capabilities and improvement by downloading firmware from website or with its auto-upgrade option as the customers' needs grow. Moreover, operators can download the latest protocol or service improvements as well as update firmware by checking the version and activating the auto-upgrade via AP-NMS (Network Management System) or AP-VPMS(VoIP Plug &Play Management System) system of AddPac Technologies.

Major Feature

Overall Features

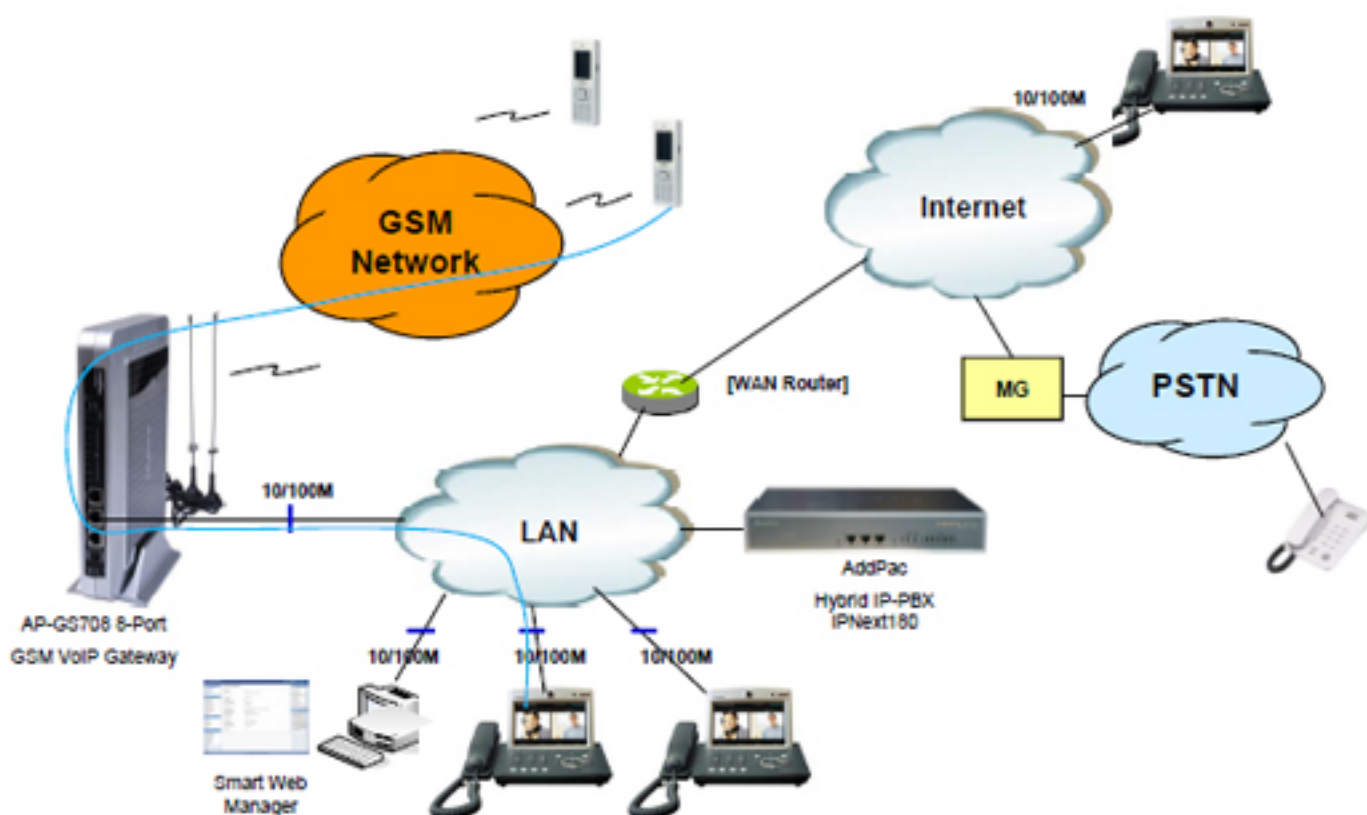
- › Powerful RISC Microprocessor + DSP Architectures
- › Two(2) 10/100Mbps Fast Ethernet Interfaces for WAN,LAN
- › Eight(8) GSM Module (SIM Card, Antenna) Interface
- › 1-Port RS-232C Console Interface for CLI
- › Standard High-performance VoIP Gateway for Voice Networking Applications
- › Multi-protocol Routing Solutions between WAN and LAN Access with H.323 based VoIP Protocol
- › ITU-T H.323 v3 VoIP Protocol with ITU-T H.235 Security Feature
- › SIP protocol support compliant with IETF RFC3261 (or RFC2543)
- › Supports Dual stack of H.323 and SIP
- › APOS Internetworking Software to provide Scalability, Functionality, Stability, and QoS Control for AddPac VoIP Gateway
- › High-performance IP-Routing Capability with Reliability
- › Static, Default IP-Routing and IEEE 802.1Q VLAN Routing Protocols
- › Point to Point over Ethernet Protocol for ADSL based Broadband Network
- › Enhanced QoS Managements for Voice Traffic
- › SNMP MIB v2 for Network Management Features
- › Essential Scalability Features such as DHCP Server & Relay, NAT/PAT, IEEE Transparent Bridging, IP Accounting, and Debugging/ Diagnostics, etc.
- › Remote Software Upgrade using FTP & TFTP
- › Graceful Compact Design



Specification

| | |
|-------------------|-----------------------------|
| GSM Module Vendor | Wavecom(Sierra) |
| GSM Channel | 8-Port |
| IMEI Change | Support : Multiple Change |
| External Antenna | 8 ea |
| VoIP Codec | G.711, G.729, G.723.1, etc. |

Network Diagram



AddPac Technology Co.,Ltd.

AddPac Texhnology (Korea-Head Office)
 Phone +8225683848
 Email sales@addpac.com

AddPac Gulf LLC (Dubai)
 Name Imran Gharaiya
 Phone +971553183550
 Skype ID imrangharaiya