

# AP-GS804 GSM Gateway (Model C)



FXO Service Features

**AddPac**

AddPac Technology

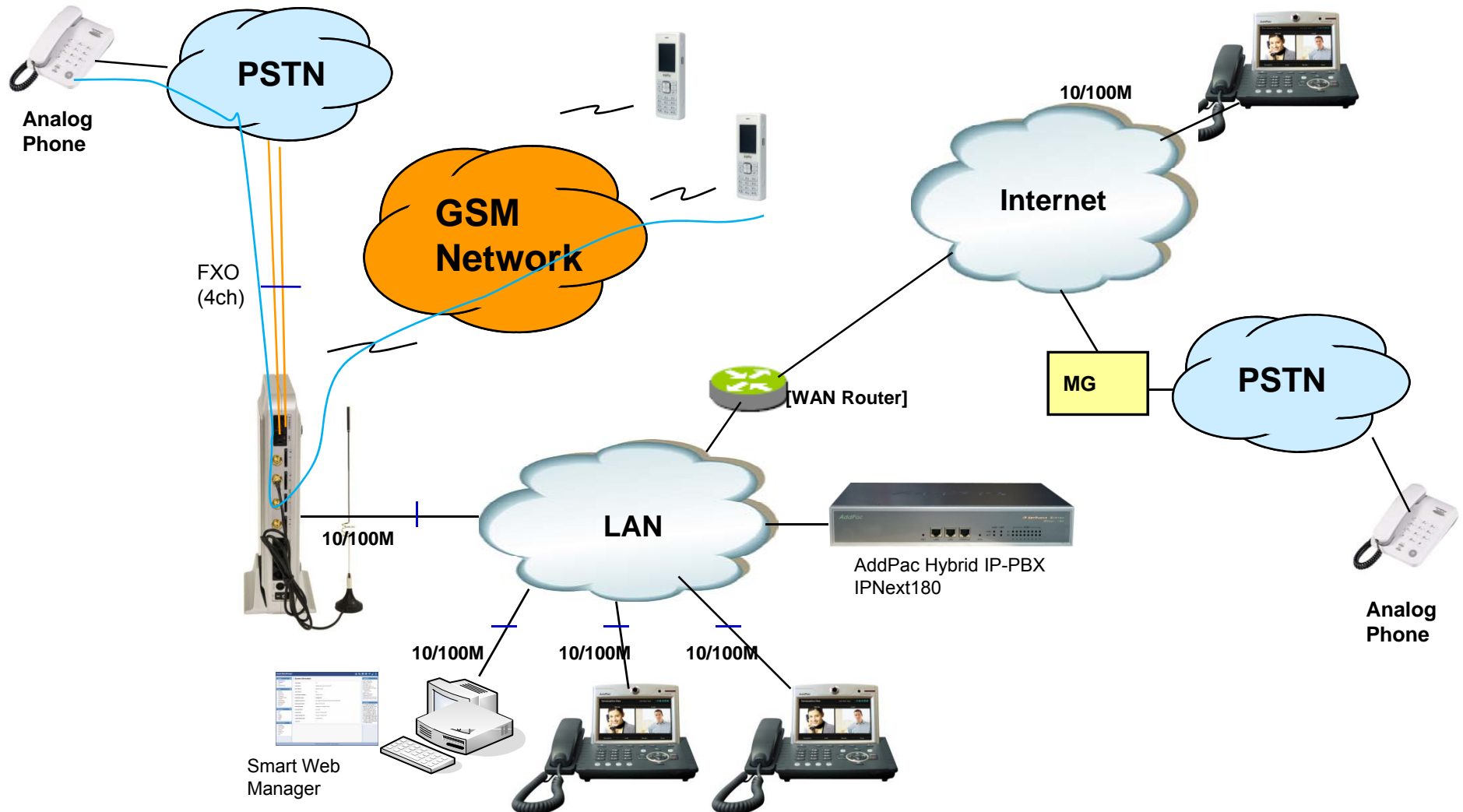
Sales and Marketing

# Contents

- FXO GSM VoIP Service Network Diagram
- FXO Service Feature List
- FXO Port Service Feature Example
  - Polarity Inverse Detection
  - Caller-ID Detection
- FXO Service Description
  - Voice-confirmed connect function
  - Clear down tone reg. and detect function
  - Hook flash timing
  - Ring number and detect timing



# Network Diagram for FXO Call



# FXO Service Feature List

FXO Service Features	Polarity inverse detection function
	Caller-ID detection function
	Clear down tone registration and detect function
	Hook flash timing setting function
	Ring detect timeout setting function
	Ring number setting function
	Voice-confirmed connect function

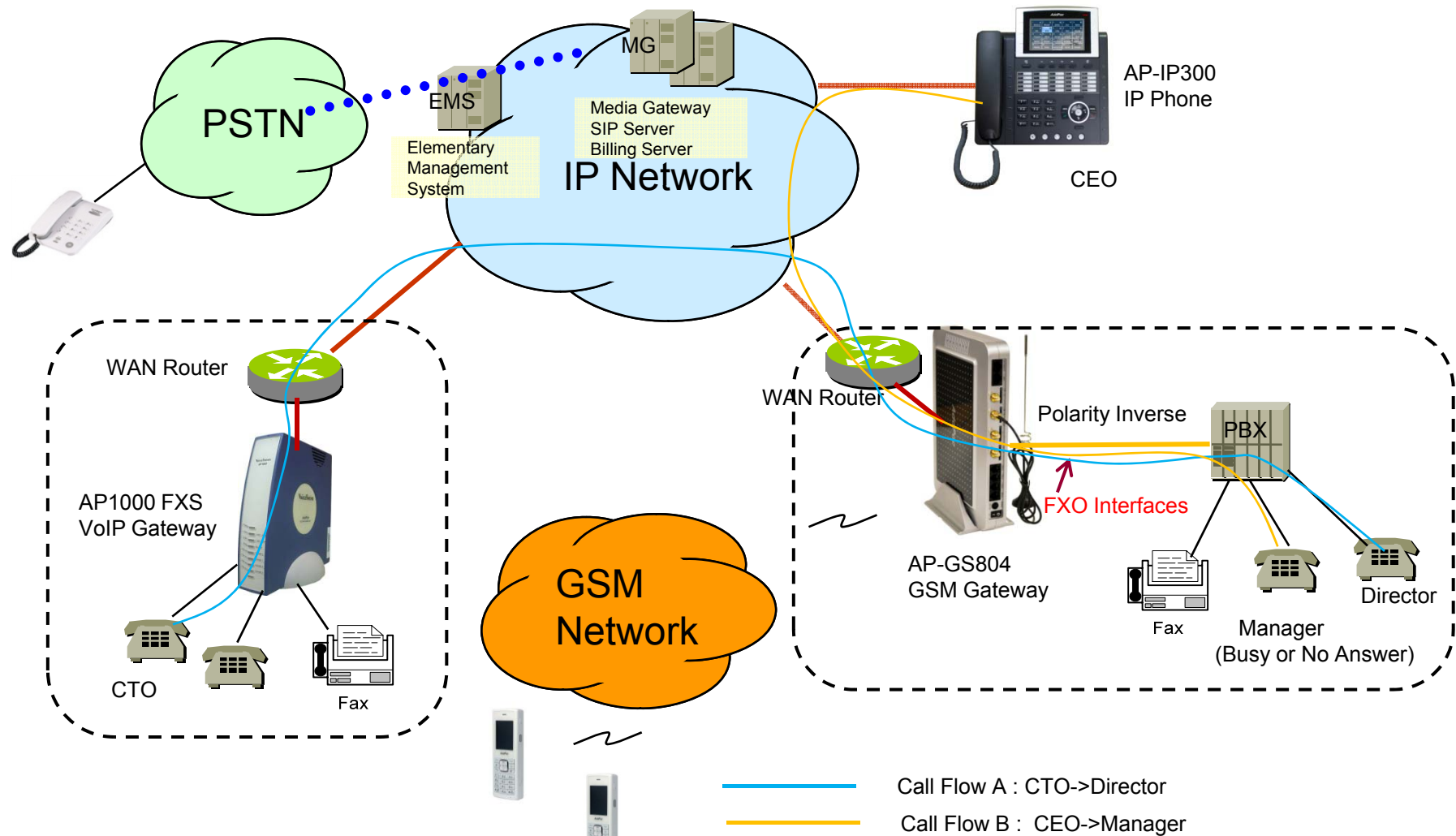
# Polarity Inverse Detection Function

- Polarity inverse detection function
  - The FXO port detects the polarity inverse signal coming from Legacy PBX
  - When there is an incoming VoIP call via the FXO port to Legacy PBX, the gateway sends call connect message to Softswitch after detecting the polarity inverse signal on the FXO port.
  - Using Polarity Inverse Signal, a accurate billing service is available.

## When polarity inverse function is enabled

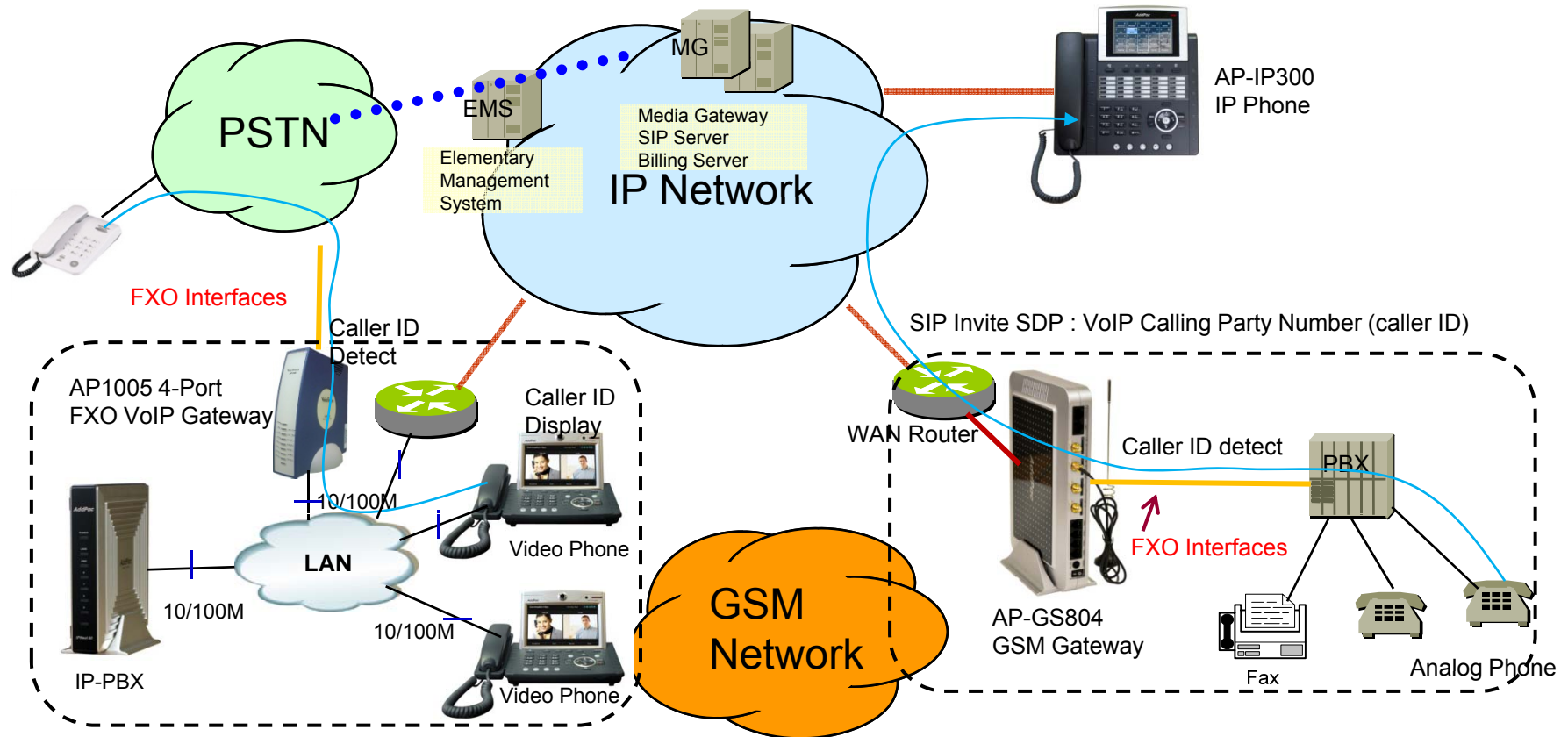
- In case of A flow, Billing is start when the director hooks off.
- In case of B flow, Billing is not start because manager port is busy or no answer

# Polarity Inverse Detection Function



# Caller ID Detect Function

- Caller-ID detection function
  - The FXO port is connected to PSTN or PBX, and is able to detect Caller-ID.
  - When a VoIP call is originated from the FXO port, the FXO port detects the caller-ID and uses the number as the VoIP calling party number.



# FXO Service Description

Features	Description
Voice-confirmed connect function	When FXO port is connected to PBX extension and the subscriber does take the call, connect message is not sent to sender side and billing is not included.
Ring number setting function	Use this command to set the maximum number of rings to be detected before answering a call over an FXO voice port. In that case, the FXO interface would answer if the equipment online did not answer the incoming call in the configured number of rings.
Clear down tone registration and detect function	Clear-down-tone detects call termination of FXO port connected to and generated from PSTN or PBX. The value of clear-down-tone (busy tone, fast busy tone) is different for each PSTN and PBX. So use voice class clear-down-tone for registration process in global configuration mode.
Hook flash timing setting function	Different from call-transfer, you need to press hook-flash button twice for conference call. Basically, it takes 500 ms (0.5 sec) to recognize hook-flash button from the AddPac gateway. If you think 500ms (0.5 sec) is too short, you can change hook-flash detect timeout value when hook-flash duration time of PBX is more than 500ms.





# Thank you!

AddPac Technology Co., Ltd.  
Sales and Marketing

Phone +82.2.568.3848 (KOREA)

FAX +82.2.568.3847 (KOREA)

E-mail [sales@addpac.com](mailto:sales@addpac.com)