

# IPNext250™

## Hybrid IP-PBX System

High Performance Hybrid IP-PBX Solution

NAT Traversal Service for SIP Port  
Blocking Issue Solving



# **AddPac**

**AddPac Technology**

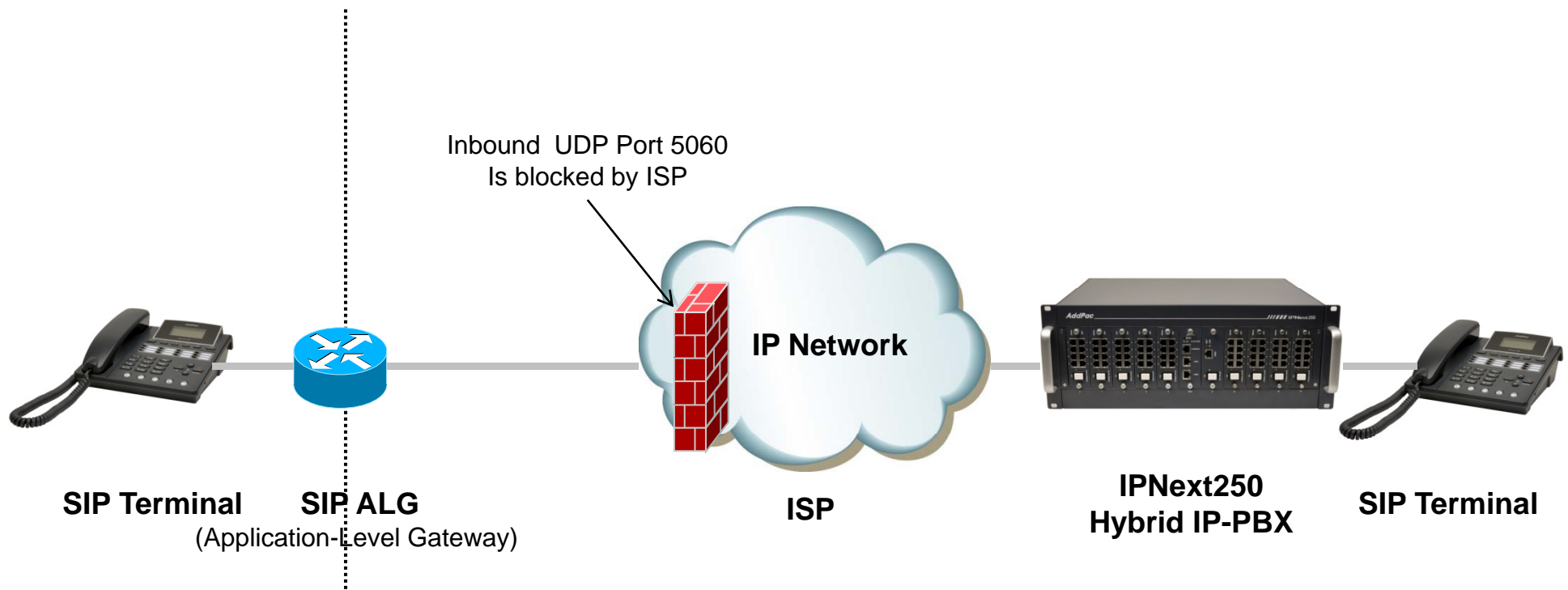
2011, Sales and Marketing

[www.addpac.com](http://www.addpac.com)

# Contents

- Network Diagram
- IP Telephony Service Environment
- NAT Traversal Service
  - Call Established Mode
  - Change Session Mode
- Smart Multimedia Manager Configuration

# Network Environment

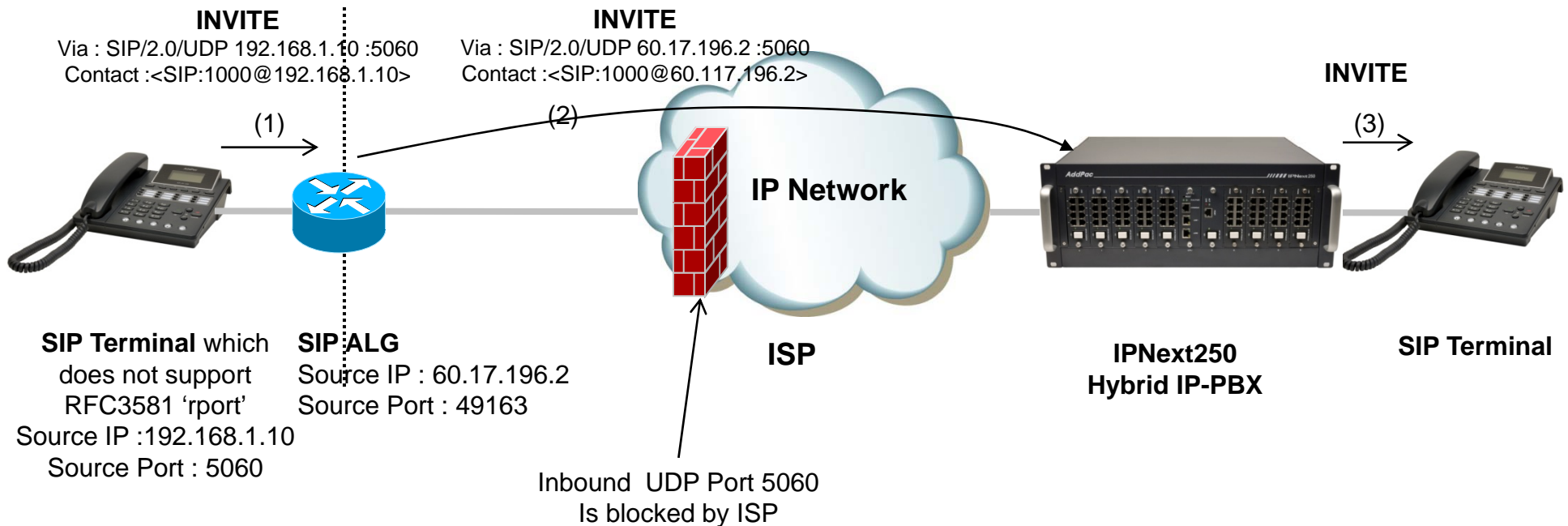


# IP Telephony Service Network Environment

- Terminal : IP Phone, VoIP Gateway, etc
  - Located below the NAT
  - Do not support RFC3581 (An Extension to the SIP for Symmetric Response Routing)
- NAT : SOHO Router
  - SIP ALG(Application-level gateway)
    - Replace IP in "Via" header with the public IP and port
    - Replace "Contact" with mapped public IP and port
    - Replace SDP media address with public IP and port
  - In some network environments, the SIP ALG replace "Contact" port in REGISTER message only. It's caused by wrong configuration or abnormal operation.
- Network : ISP Network
  - Inbound UDP port 5060 is blocked by local ISP

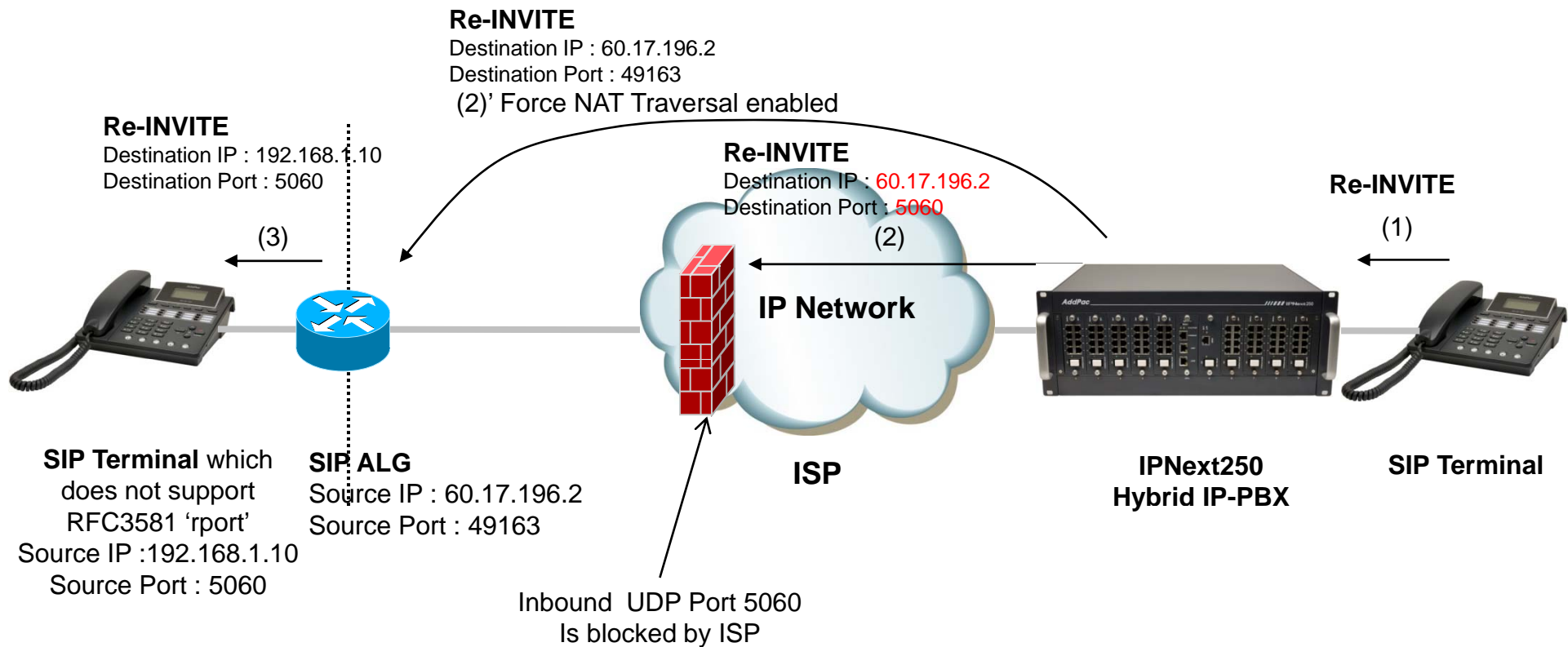
# NAT Traversal Service

## [Call Established]



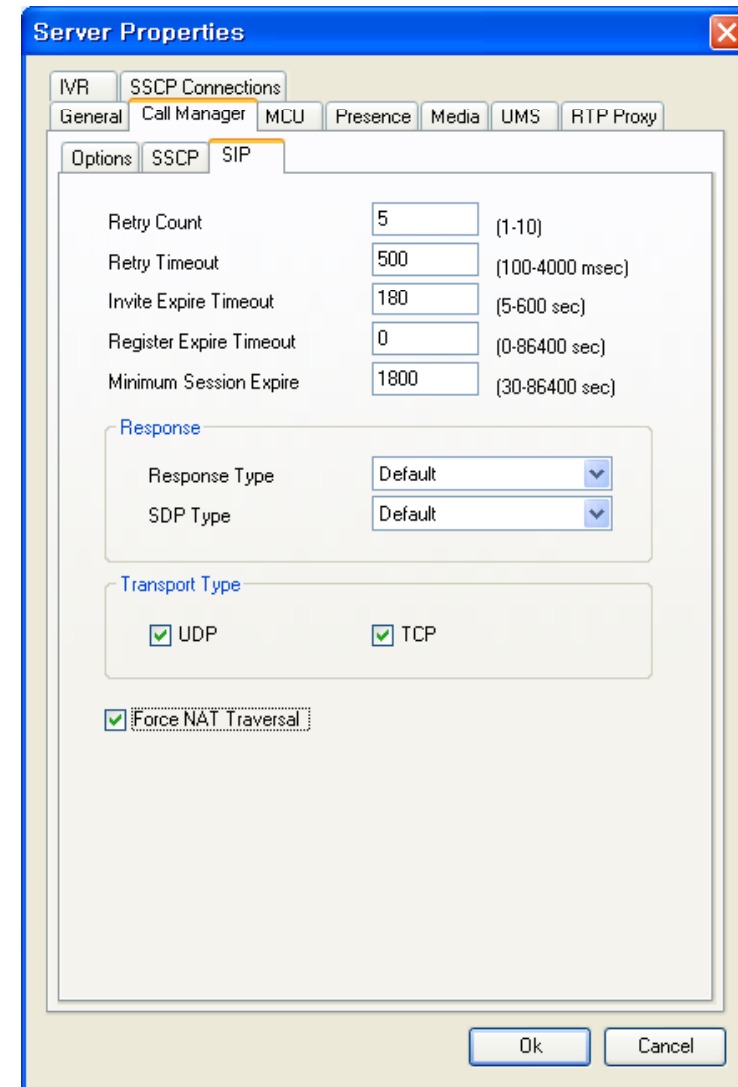
# NAT Traversal Service

## [Change Session]



# Smart Multimedia Manager Configuration

- Smart Multimedia Manager
  - Device Management
    - Devices
      - Server
        - » (IPNext) Properties
- Check 'Force NAT Traversal' option





# Thank you!

**AddPac Technology Co., Ltd.**  
Sales and Marketing

Phone +82.2.568.3848 (KOREA)

FAX +82.2.568.3847 (KOREA)

E-mail [sales@addpac.com](mailto:sales@addpac.com)