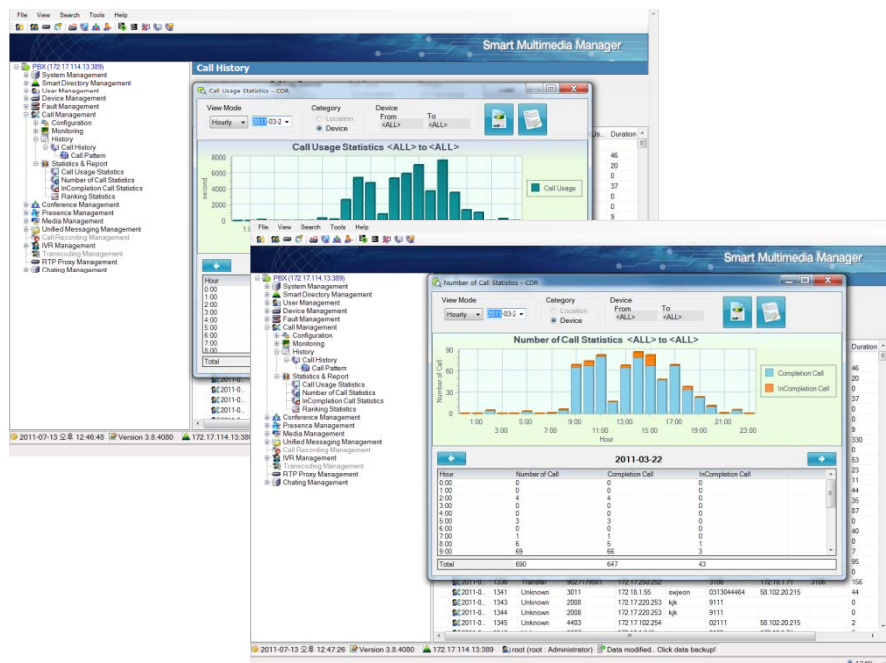


# AddPac IP-PBX Series

High-performance Next Generation IP-PBX Solution

CDR(Call Detail Record) Service Features



**AddPac**

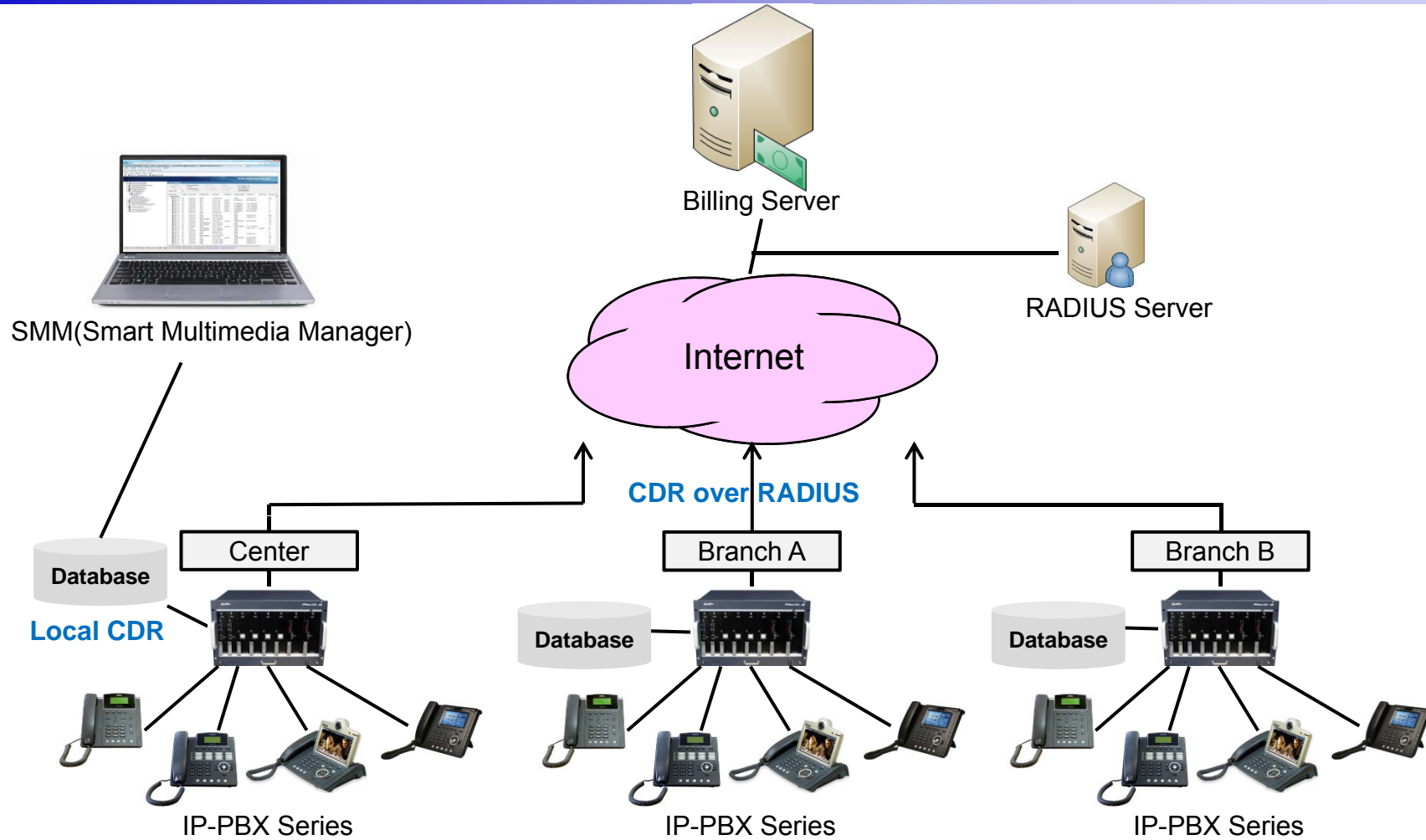
AddPac Technology

Sales and Marketing

# Contents

- Network Diagram for CDR Service
- IP-PBX CDR Features
- CDR over RADIUS Features
- Local CDR Features
- CDR Data Field

# Network Diagram

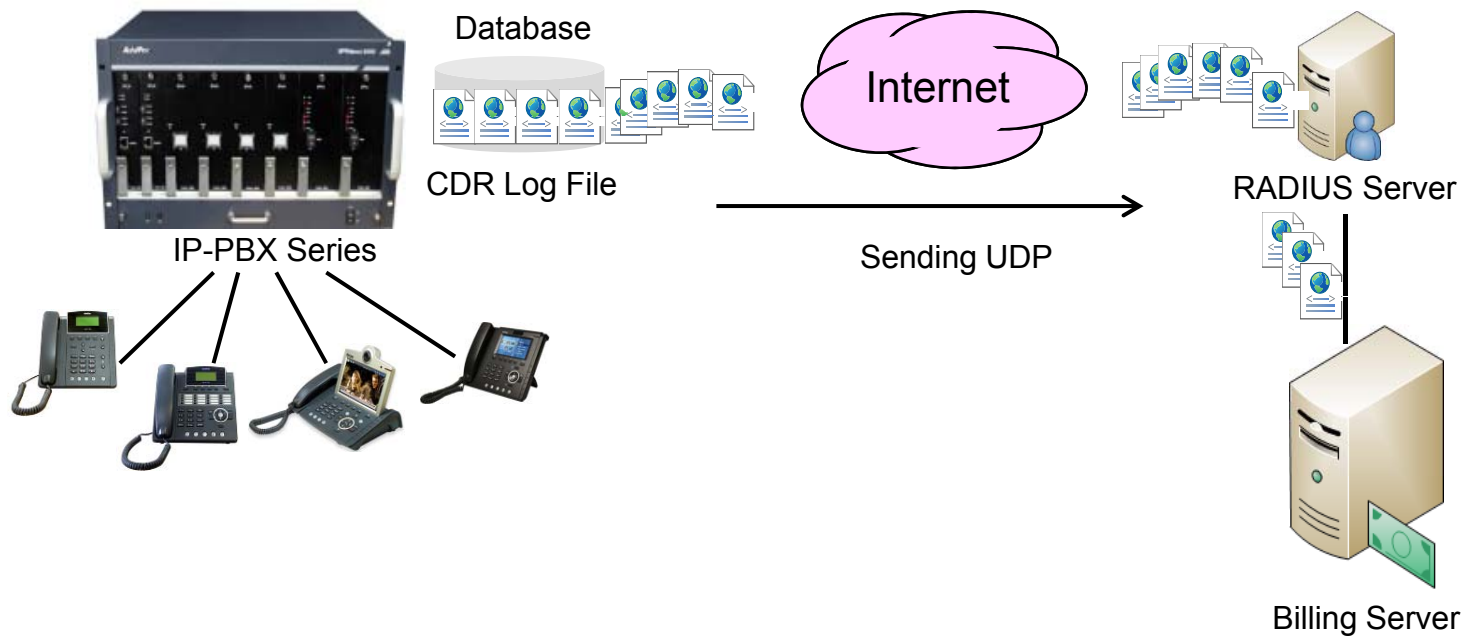


# IP-PBX CDR Features

- AddPac IP-PBX Products support a feature of CDR(Call Detail Records)
  - Two CDR Characteristics
    - CDR field parameters for RAIDUS Server (IP-PBX, Gateway)
    - AddPac IPNext IP-PBX product saves newly created CDR from IP-PBX call operation into local hard disk (IP-PBX)
  - One CDR information is created when the call ends. It is composed of 60 data field values
  - In case of local CDR information, a user can view CDR information with IP-PBX Series management program (Smart Multimedia Manager)

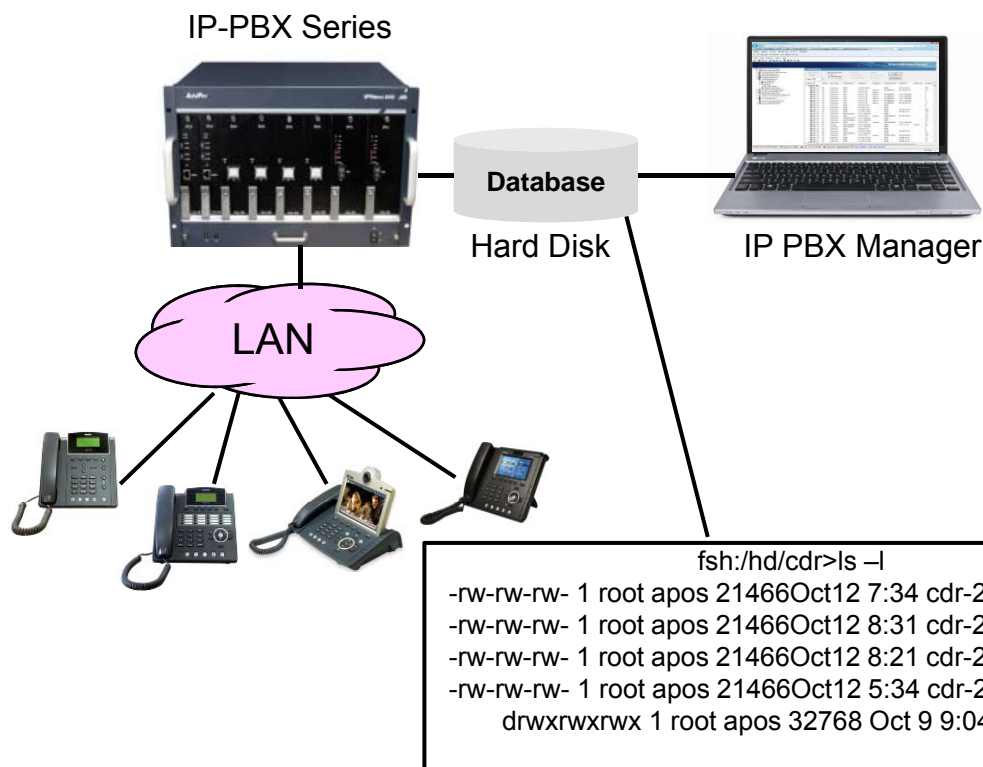
# CDR over RADIUS Features

CDR can be transmitted to RADIUS server by using IP-PBX Series RADIUS message.



# Local CDR Features (cont.)

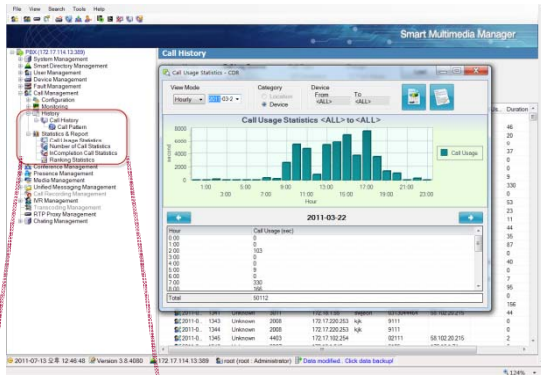
- IPNext IP-PBX product saves newly created CDR from IP-PBX call operation into local hard disk
- User can view CDR Information with IP-PBX Manager program



<b>Days</b>	Set number of day to keep CDR files
<b>Flush-interval</b>	Set time interval to flush records from buffer to file
<b>Max-record</b>	Set maximum number of records to keep in buffer
<b>On</b>	Enable local CDR
<b>Recent</b>	Keep copy of recent CDR in separate directory

Local CDR Detail Setup

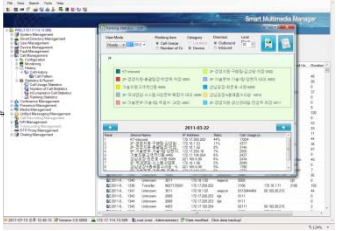
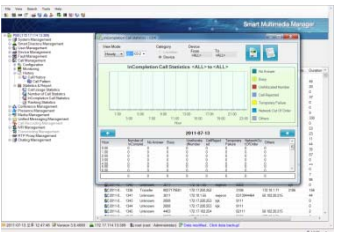
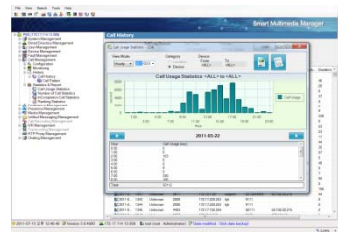
# Local CDR Features



IP-PBX Manager

- History
  - 1 Call History
  - Call Pattern
- Statistics & Report
  - 2 Call Usage Statistics
  - 3 Number of Call Statistics
  - 4 InCompletion Call Statistics
  - 5 Ranking Statistics

- 1 Check saved call history with IP-PBX local CDR
- 2 Check statistics regarding call duration with graph
- 3 Check the number of call use in date/month statistically
- 4 Check the incomplection call in date/month statistically
- 5 Check the number of user call use ranking in date/month



# CDR Data Field

Data Field Names	Description
cdrRecordType globalCallId_ClusterID globalCallId_callManagerId globalCallId_callId	<b>Call Identifier (mandatory)</b>
dateTimeOrigination dateTimeConnect dateTimeDisconnect duration	<b>Timestamp and Duration</b>
callingPartyNumber lastRedirectDn origCalledPartyNumber finalCalledPartyNumber	<b>Extension Number</b>
callingPartyNumberPartition lastRedirectDnPartition origCalledPartyNumberPartition finalCalledPartyNumberPartition	<b>Partition Information</b>
callingPartyLoginUserId finalCalledPartyLoginUserId	<b>User Information</b>
origDeviceName origNetAddr origNetPort origNodeid origSpan destDeviceName destNodeid destSpan destNetAddr destNetPort	<b>Device Information</b>

Data Field Names	Description
origMediaTransportAddress origMediaTransportPort origMediaCap_PayloadCapability origMediaCap_MaxFramePerPacket origVideoCap_Codec origVideoCap_Bandwidth origVideoCap_Resolution origVideoTransportAddress origVideoTransportPort destMediaTransportAddress destMediaTransportPort destMediaCap_PayloadCapability destMediaCap_MaxFramePerPacket destVideoCap_Codec destVideoCap_Bandwidth destVideoCap_Resolution destVideoTransportAddress destVideoTransportPort	<b>Media Channel Information</b>
origLegCallIdentifier destLegIdentifier destConversationId	<b>Call Leg Identifier</b>
origCause_Value origCallTerminationOnBehalfOf lastRedirectRedirectOnBehalfOf lastRedirectReason joinOnBehalfOf destCallTerminationOnBehalfOf origCalledPartyRedirectReason origCalledPartyRedirectOnBehalfOf destCause_Value comment	<b>State Transition Reason</b>





# Thank you!

**AddPac Technology Co., Ltd.**  
Sales and Marketing

Phone +82.2.568.3848 (KOREA)

FAX +82.2.568.3847 (KOREA)

E-mail [sales@addpac.com](mailto:sales@addpac.com)