



IPNext50™

SOHO IP-PBX

High-performance Next Generation IP-PBX Solution

New Models for VoIP
Interface Extension

Preliminary Product Overview

(Without notice, following described technical spec. & Body Color (CASE) can be changed)



IPNext50

AddPac

AddPac Technology

2008, Sales and Marketing

www.addpac.com

Contents

- IPNext50 Product Overview
- IPNext50 Model C,D H/W Specification
- IPNext50 Model C, D Network Diagram



IPNext50

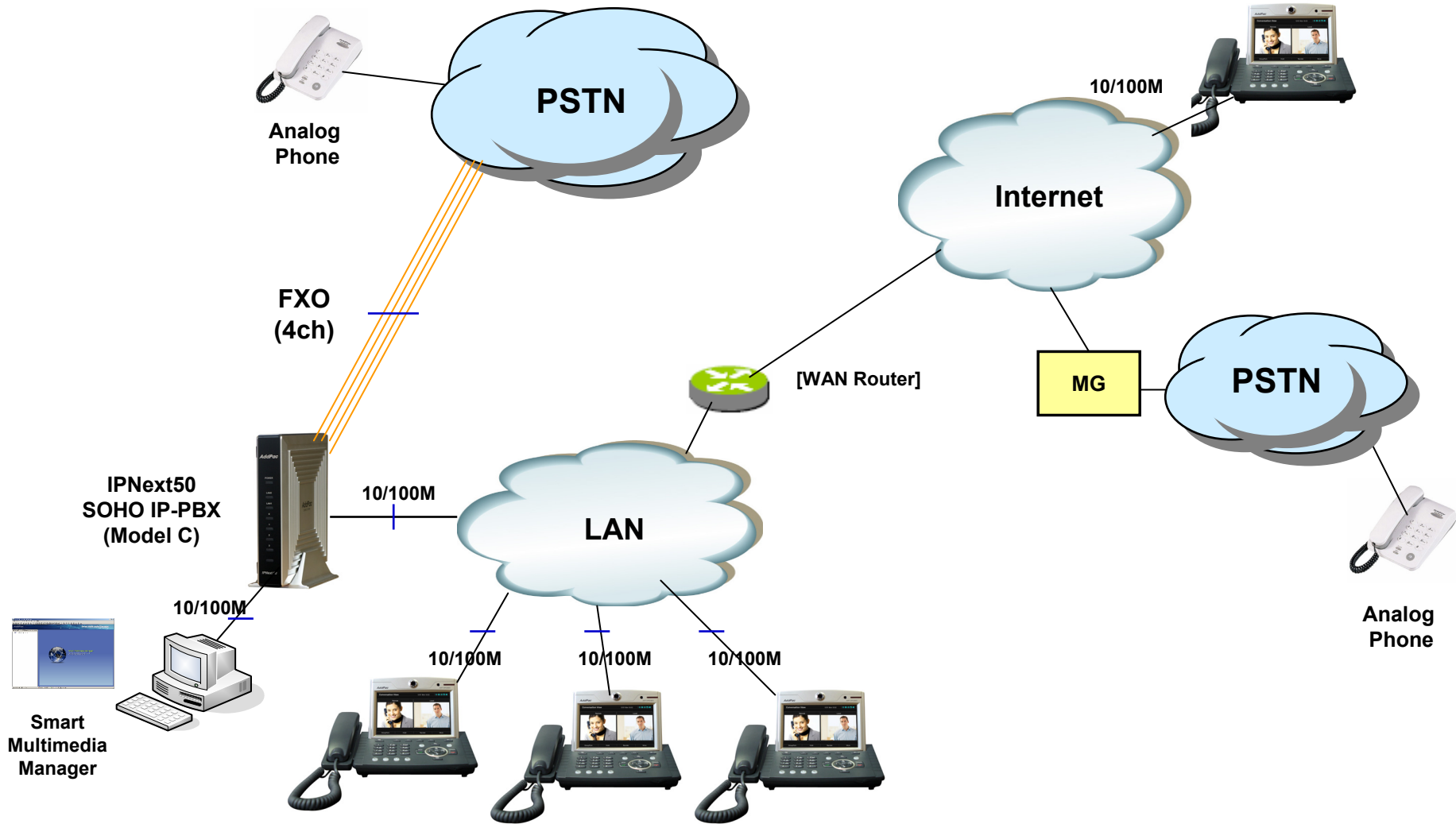
IPNext50 Product Overview

- Small, Powerful IP-PBX for SOHO
- Smart Management and User Friendly Features
- Fault Tolerant and Scalability Architecture
- RTP Proxy Service
- IVR Service
- User Presence Service
- Media Service : Ring back Tone, Music on Hold, Announcement, etc
- Unified Messaging Service : Voice Mail, etc
- Firmware Upgradeable Architecture
- Two(2) Fast Ethernet Interface
- Two(2) FXO VoIP Interface for PSTN (Model B)
- One(1) RS-232C Port for CLI
- One(1) USB 1.1 Interface for Secondary Device

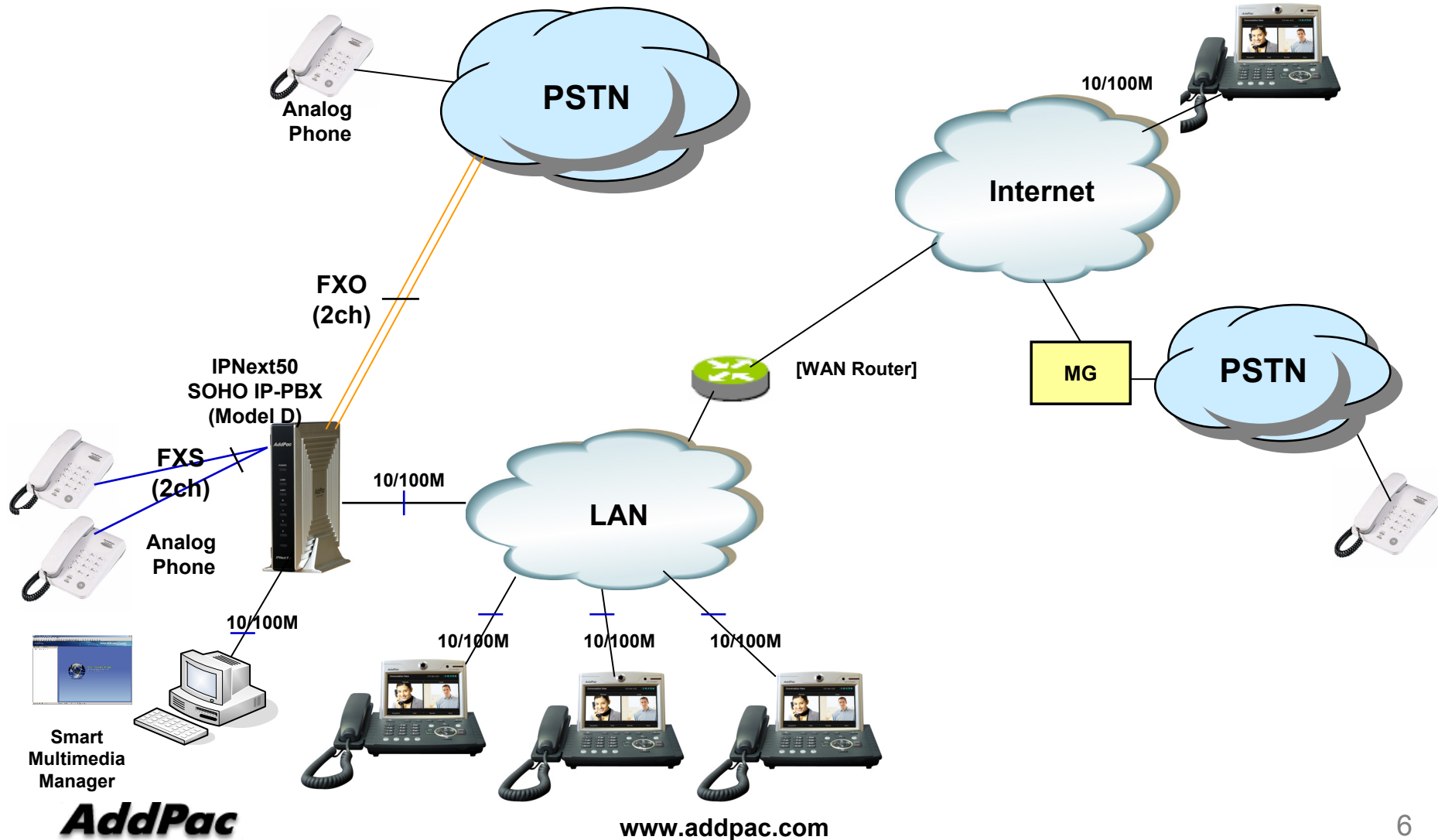
IPNext50 New Model

- IPNext50 Embedded Platform
- Voice Interface
 - FXO 2ch Model (Model B)
 - FXO 4ch Model (**Model C**) : New Model
 - FXS 2ch FXO 2ch Model (**Model D**) : New Model
- RISC Microprocessor Computing Power
- Audio Codec
 - G.711, G.726, G.729, G.723.1
- Main Chassis
 - One(1) RS-232C Console (RJ45)
 - Two(2) Fast Ethernet Port
 - One(1) USB 1.1 Interface for Secondary Device
 - External Power Adaptor

IPNext50(Model C) Network Diagram



IPNext50(Model D) Network Diagram





Thank you!

AddPac Technology Co., Ltd.
Sales and Marketing

Phone +82.2.568.3848 (KOREA)

FAX +82.2.568.3847 (KOREA)

E-mail sales@addpac.com