

IPNext100™ NGN IP-PBX

High-performance Next Generation IP-PBX Solution

RTP Proxy Function for Private IP Problem Solving



AddPac

AddPac Technology

2007, Sales and Marketing

www.addpac.com

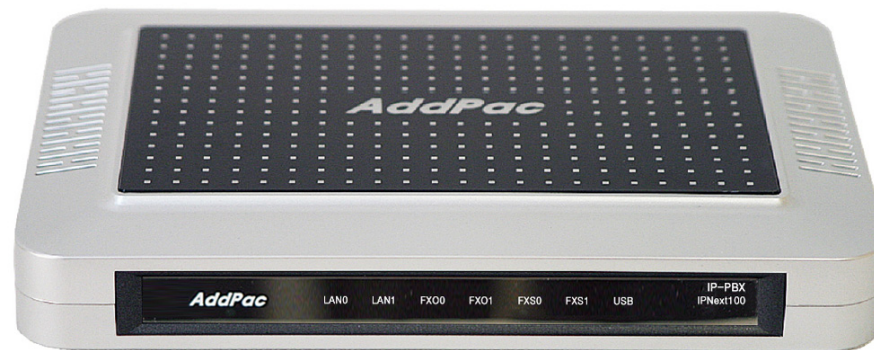
Contents

- RTP Proxy Function Overview
- RTP Proxy Configuration
 - Public/Private RTP proxy
 - Asymmetric/Symmetric NAT
 - IPv4/IPv6 RTP Proxy

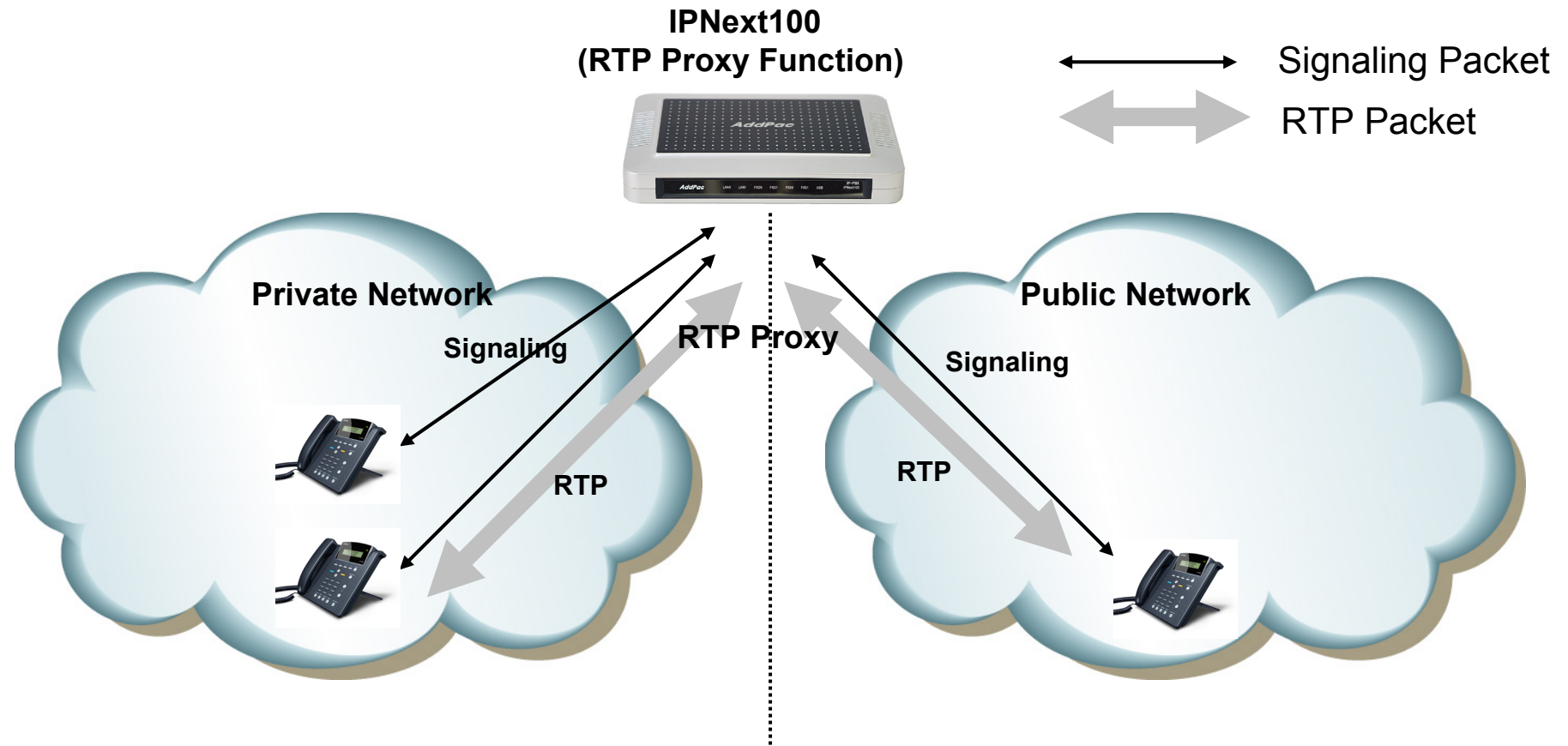
RTP Proxy Function Overview

- Protocol Independence (H.323, SIP)
- Support RTP Proxy without NAT
- Support Symmetric / Asymmetric NAT
- Support IPv4/IPv6 RTP Proxy

RTP Proxy Configuration

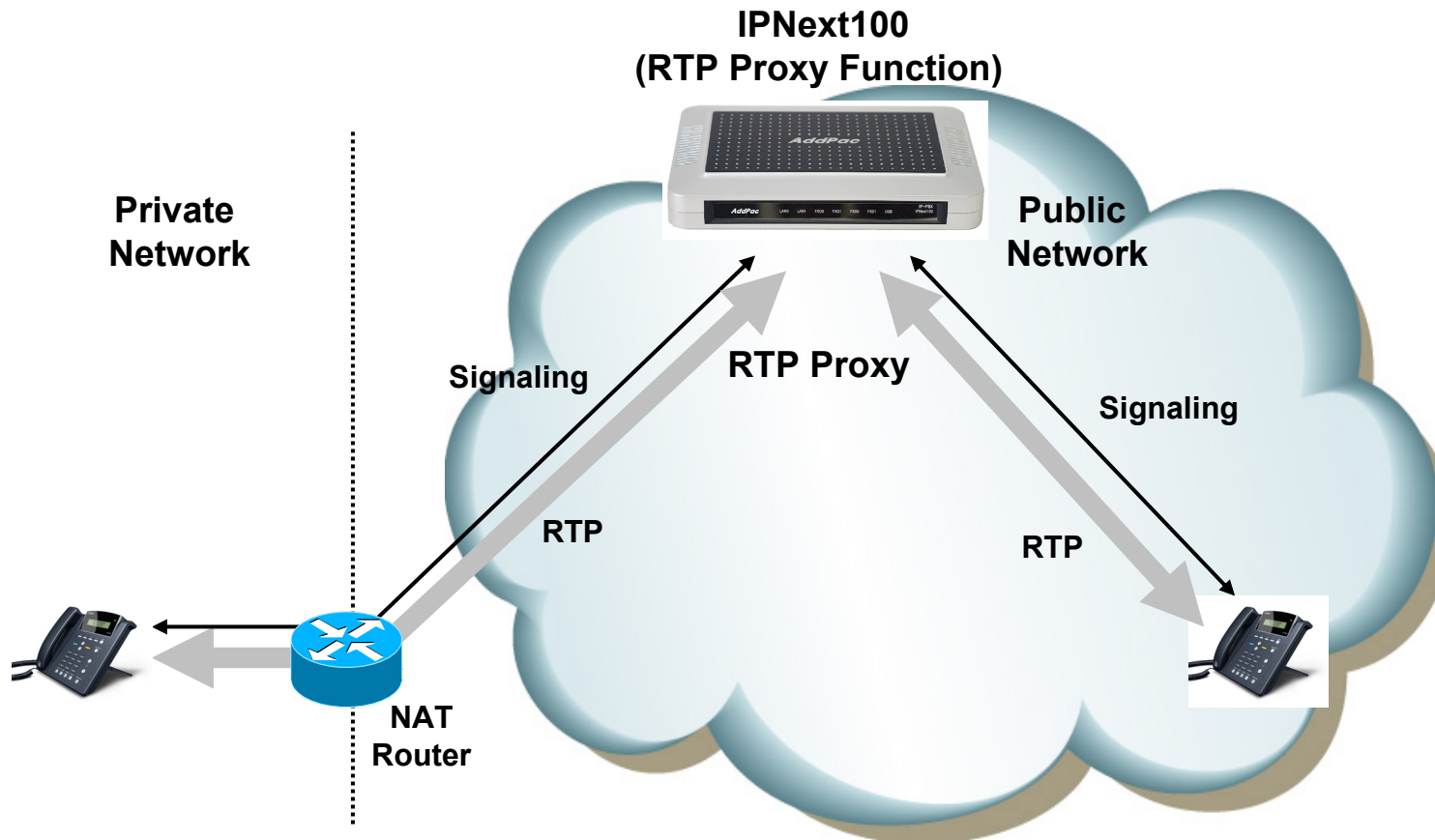


Public/Private RTP Proxy without NAT Router



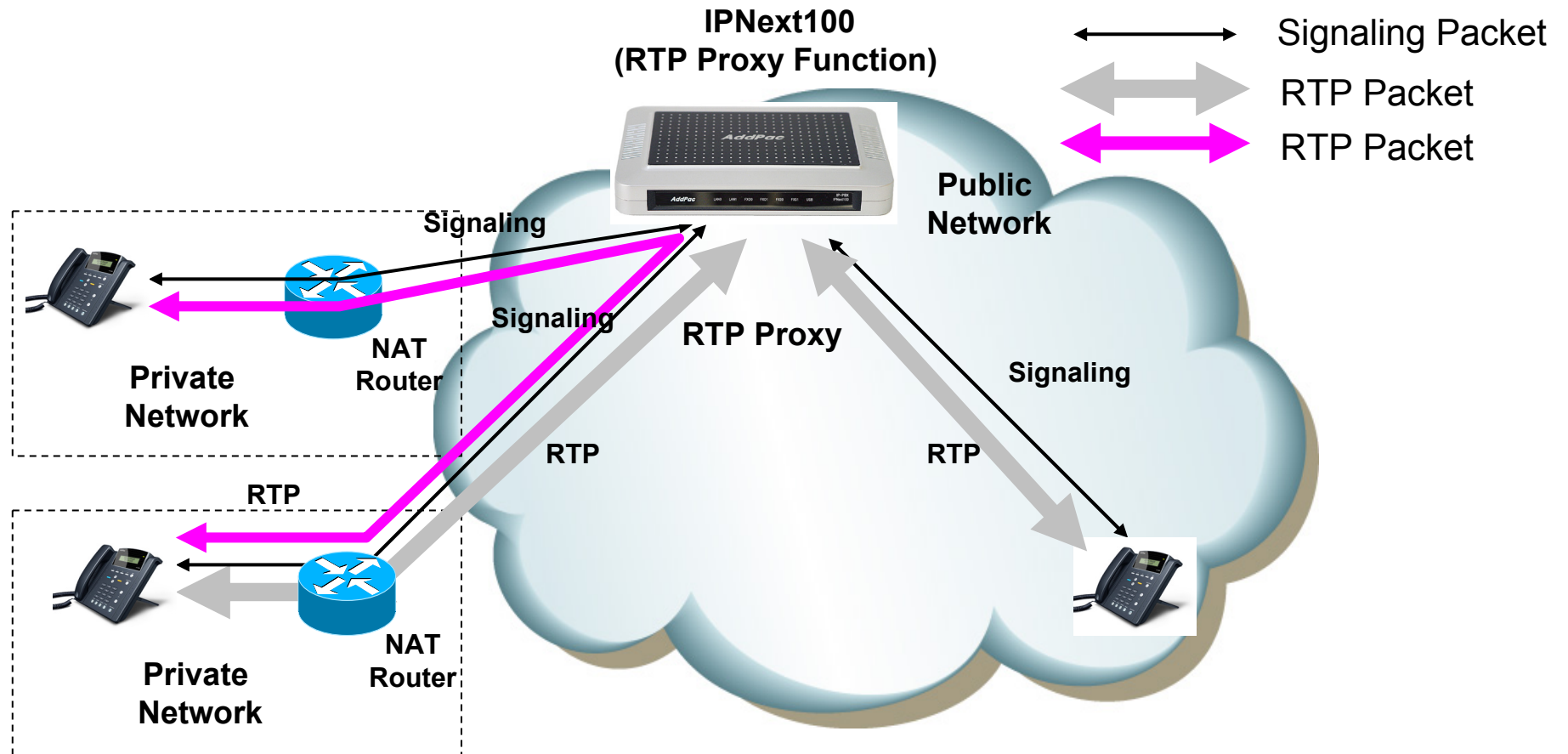
- Located between public and private network
- IPNext100(Call manager + RTP proxy) has public and private address
- IPNext100 determine that the call is internal or external

Asymmetric/Symmetric NAT



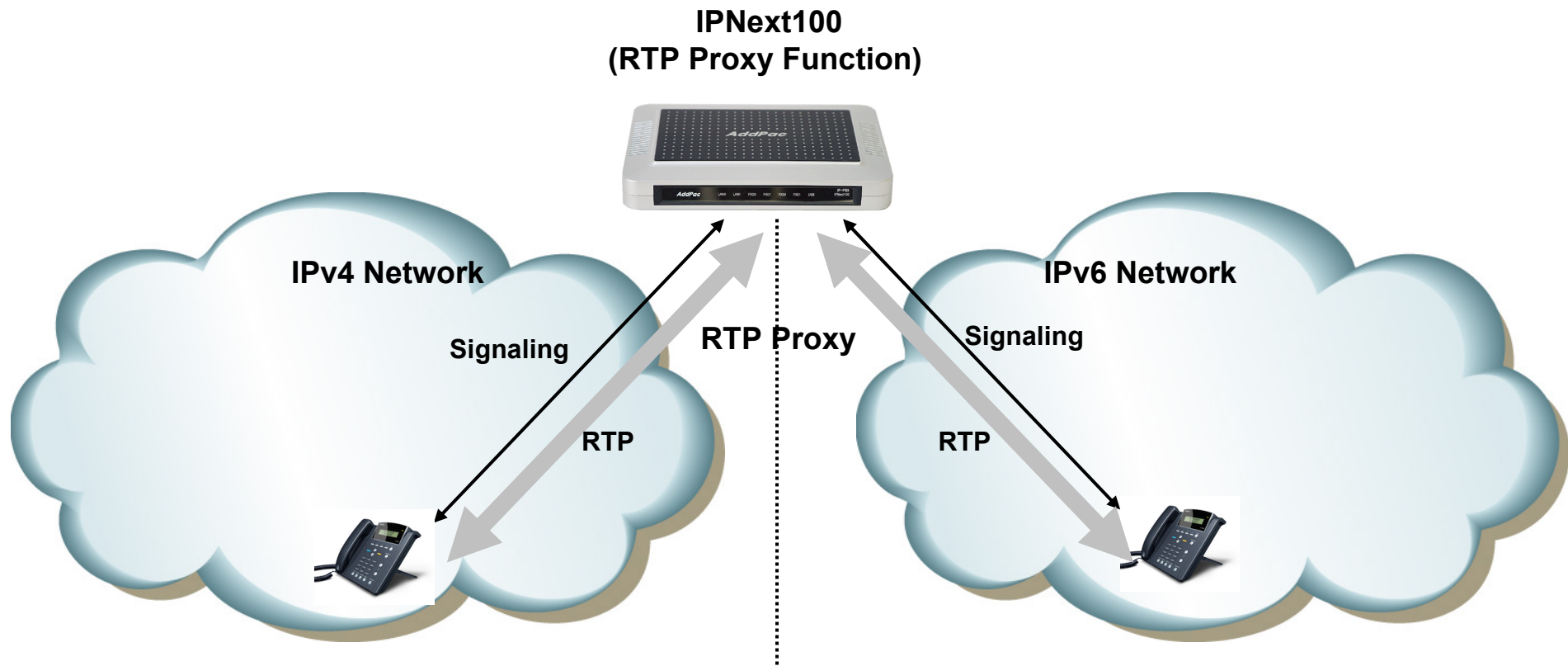
- Located in public network
- RTP Proxy has single public address
- Auto detect for asymmetric NAT via incoming RTP packet

RTP Proxy Communication between Private IP



- Located in public network
- RTP Proxy has single public address
- Auto detect for asymmetric NAT via incoming RTP packet

IPv4/IPv6 RTP Proxy



- IPNext100(Call manager + RTP proxy) has IPv4 and IPv6 address



Thank you!

AddPac Technology Co., Ltd.
Sales and Marketing

Phone +82.2.568.3848 (KOREA)

FAX +82.2.568.3847 (KOREA)

E-mail sales@addpac.com