

# AP-GTR2000

임베디드 GPS NTP 시각 동기장치

Smart Web Manager



**AddPac**

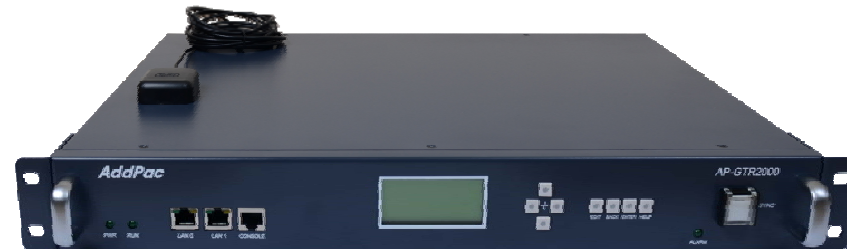
**AddPac Technology**

Sales and Marketing

[www.addpac.com](http://www.addpac.com)

# 목 차

- 제품 주요 특징
- 하드웨어 사양
- 스마트 웹기반 관리 소프트웨어
- SNTP (Simple Network Time Protocol) 망 구성도



# 제품 주요 특징

- GPS 기반 하드웨어 모듈을 장착한 임베디드 NTP (Network Time Protocol) 서버
- 고성능 GPS 시각 동기 장치 솔루션
- IP 기반 GPS 시각 수신장치 (Location Free, etc)
- GPS 시각정보 전송을 위한 듀얼 RS232 포트
- GPS 시간정보 표시를 위한 LCD 지원
- 외부 GPS 안테나 지원
- 19인치 랙마운터블 샤시
- 듀얼 고속 이더넷 인터페이스 (Two(2) 10/100Mbps Fast Ethernet) 지원
- GPS 신호 수신을 위한 고성능 안테나 지원 (10m 기본제공, 20m 옵션)
- 디바이스 상태표시를 위한 블루 램프(Blue LAMP) 지원
- 디바이스 설정 및 관리를 위한 스마트 웹 관리 소프트웨어 탑재
- 펌웨어 업그레이드 가능한 시스템 구조
- SMPS 내장형 전원 공급장치 탑재

# 하드웨어 사양

RISC  
CPU

High-end  
GPS

- RISC 마이크로프로세서 컴퓨팅 파워
- 고성능 GPS 하드웨어 모듈 아키텍처
- 한 개의 GPS 하드웨어 모듈 슬롯
- 전면부 LCD 표시 기능 ( 시각 표시 등)
- 블루 램프 (GPS 시각 동기 상태 표시)
- 듀얼(2) 10/100Mbps 고속 이더넷 인터페이스
- 듀얼(2) DB-9 RS232C 인터페이스
- 내장형 SMPS 전원 공급장치
- 19인치 랙 마운터블 샤시 구조
- GPS 안테나 (10m 케이블 기본제공, 20m 케이블 : Option)
- 하드웨어 모듈 : AP-GPS-RS232
  - Two(2) DB-9 RS232C 인터페이스 포트
  - 외장형 GPS 안테나 인터페이스 포트

# 하드웨어 사양

RISC  
CPU

High-end  
GPS

## 전면부



듀얼 10/100Mbps  
고속 이더넷 LAN 포트

RS232C 콘솔 포트  
(RJ45)

상태 LCD

설정키들

블루 LAMP  
& 스위치

**AddPac**

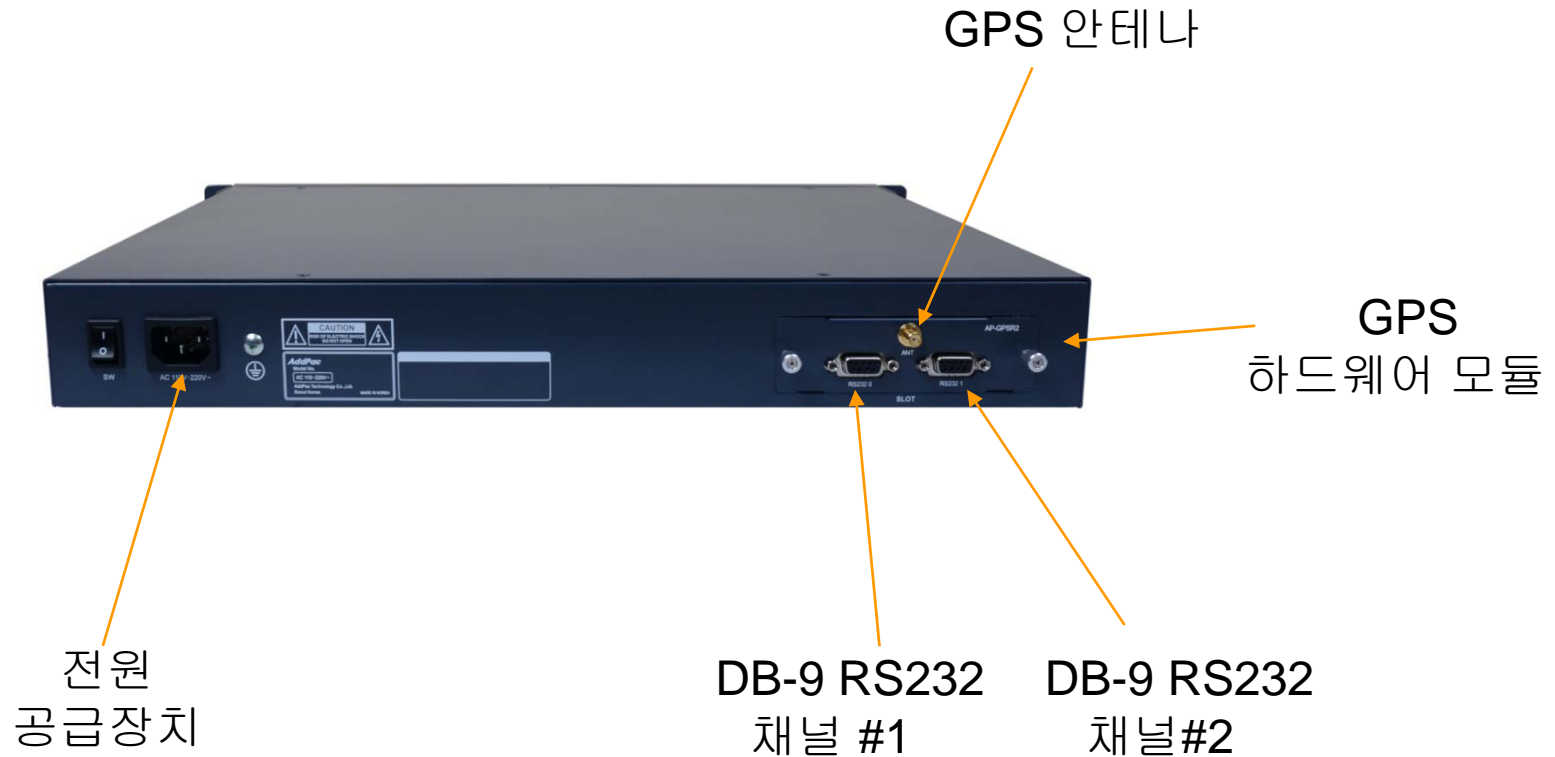
[www.addpac.com](http://www.addpac.com)

# 하드웨어 사양

RISC  
CPU

High-end  
GPS

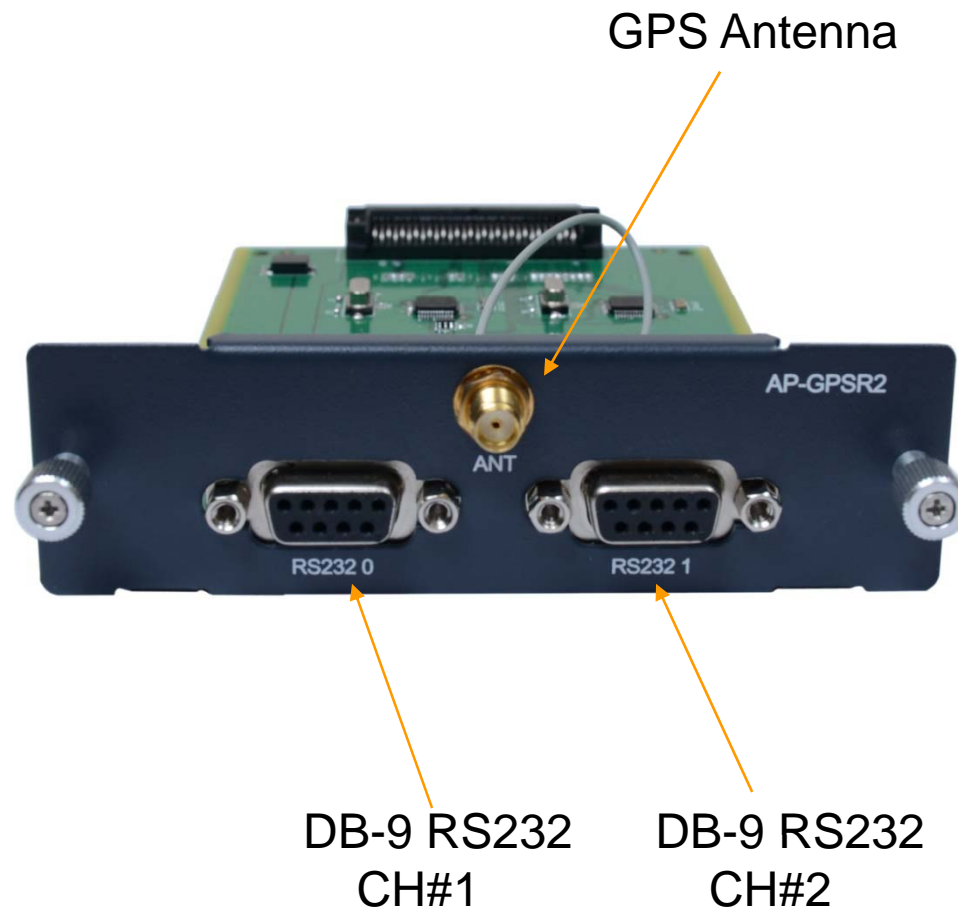
## 후면부



# 하드웨어 사양

RISC  
CPU

High-end  
GPS



# 하드웨어 사양

RISC  
CPU

High-end  
GPS

## GPS Antenna







# Smart Web Manager

# Main View

Smart Web Manager  
www.addpac.com

## System

- Language
- WAN Setup
- System Time
- File Browser

## Advanced

- SNMP

## Miscellaneous

- System Log

## System Information

Model	AP-GTR1000_G2
SW Version	8.51.017
Current Time	Tue Oct 10 14:06:38 2017
Network Information	Static 172.16.7.122
WAN LINK Status	100Mbps HALF Duplex Link UP

### Show System Information

- Model
- SW version
- Current Time
- Network Information
- WAN Link status

# System View

## Language

Smart Web Manager  
www.addpac.com

**System** ▾

- **Language**
- WAN Setup
- System Time
- File Browser

**Advanced** ▾

- SNMP

**Miscellaneous** ▾

- System Log

### Configure Language

한국어

English

Apply

Choose the basic language to be applied. English is set at default.

# System View

## WAN Setup – WAN Setup(1/2)

- System
  - Language
  - WAN Setup**
  - System Time
  - File Browser
- Advanced
  - SNMP
- Miscellaneous
  - System Log

### WAN & Tunneling Setup

**WAN Setup**

Hostname

**Static IP**

IP Address  A.B.C.D  
Network Mask  A.B.C.D  
Default Router  A.B.C.D  
DNS Server  Primary DNS Server  
 Secondary DNS Server

**PPPoE(ADSL)**

User name   
Password   
Authentication  (No Authentication)  
 PAP (PPP Authentication Protocol)  
 CHAP(Challenge Handshake Authentication Protocol)

**DHCP**

**VLAN** ID

**Auto**

**WAN Link Control**

Manual

Speed  100  10  
Duplex  full  half

**MAC(Hardware) Address**

**Enable QoS (optional)**

**QoS Control**

Bandwidth :  Kbps (default auto, 48-4096)  
PPS :  pps (default auto, 50-2000)

Apply

This command sets up WAN port. The static IP address is to be assigned from the service provider and you can enter the assigned IP address.  
For DHCP and PPPoE, IP address of this device can be changed.  
MAC Address change can be used only when necessary.  
It is recommended to use the address created by the user not the address of the device

# System View

## WAN Setup – Tunneling Setup (2/2)

**System**

- Language
- WAN Setup**
- System Time
- File Browser

**Advanced**

- SNMP

**Miscellaneous**

- System Log

### Tunneling Setup

None(Disable Tunneling, default)  
 PPTP(Point-to-Point Tunneling Protocol)

User name   
Password

**Mode**

Authentication  (No Authentication)  
 PAP(PPP Authentication Protocol)  
 CHAP(Challenge Handshake Authentication Protocol)

Phone Number  None (Default)  
 Hostname (Use hostname as phone number)  
 User Define

**Source**

**Destination**  A.B.C.D (Tunnel End Point Address)

**Service**

Voice and Data Use Tunnel Interface (default)  
 Voice Use Tunnel Interface, Data Use Ethernet Interface  
 Data Use Tunnel Interface, Voice Use Ethernet Interface

Apply

**Tunneling Setup**

- Mode
- Source
- Destination
- Service

# System View

## System Time

Smart Web Manager  
www.addpac.com

**System**

- Language
- WAN Setup
- System Time**
- File Browser

**Advanced**

- SNMP

**Miscellaneous**

- System Log

### System Time

Current Time Tue Oct 10 14:49:18 2017

Time Zone Name:  Offset:  :  (-23~23 hours) : (0~60 minutes)

Set System Time  Year  Month  Day  Hour  Min  Sec

Apply

**System Time**  
-Show current time  
-Configure time zone  
-Configure system time

# System View

## File Browser

Smart Web Manager  
www.addpac.com

**System**

- Language
- WAN Setup
- System Time
- File Browser**

**Advanced**

- SNMP

**Miscellaneous**

- System Log

### File Browser

#### Index of Root/flash/

Name	Size	Type	Last Modified
Parent Directory/		Directory	
secondary/		Directory	2017-Oct-10 14:50:17
tmp/		Directory	2016-Jan-01 09:00:00
<input type="checkbox"/> apos.cfg	0.5K	CFG	2017-Oct-10 14:06:31
<input type="checkbox"/> booter.cfg	0.2K	CFG	2000-Jan-01 09:00:08
<input type="checkbox"/> gtr1000_g2_v8_51_017.bin	1.7M	BIN	2017-Sep-29 11:21:20

Delete

파일 선택    선택된 파일 없음    Upload

**File Browser**

- Directory list
- Change directory
- Upload file
- Download file

# Advanced View

## SNMP

Smart Web Manager  
www.addpac.com

System

- Language
- WAN Setup
- System Time
- File Browser

Advanced

- SNMP**

Miscellaneous

- System Log

### SNMP

Use SNMP  Yes  No

Server Port  (default 161, between 1 to 65535)

Community

Name	Read	IP	Control
<input type="text"/>	<input checked="" type="radio"/> Read-Only <input type="radio"/> Read-Write	<input type="text"/>	Delete Add

Trap

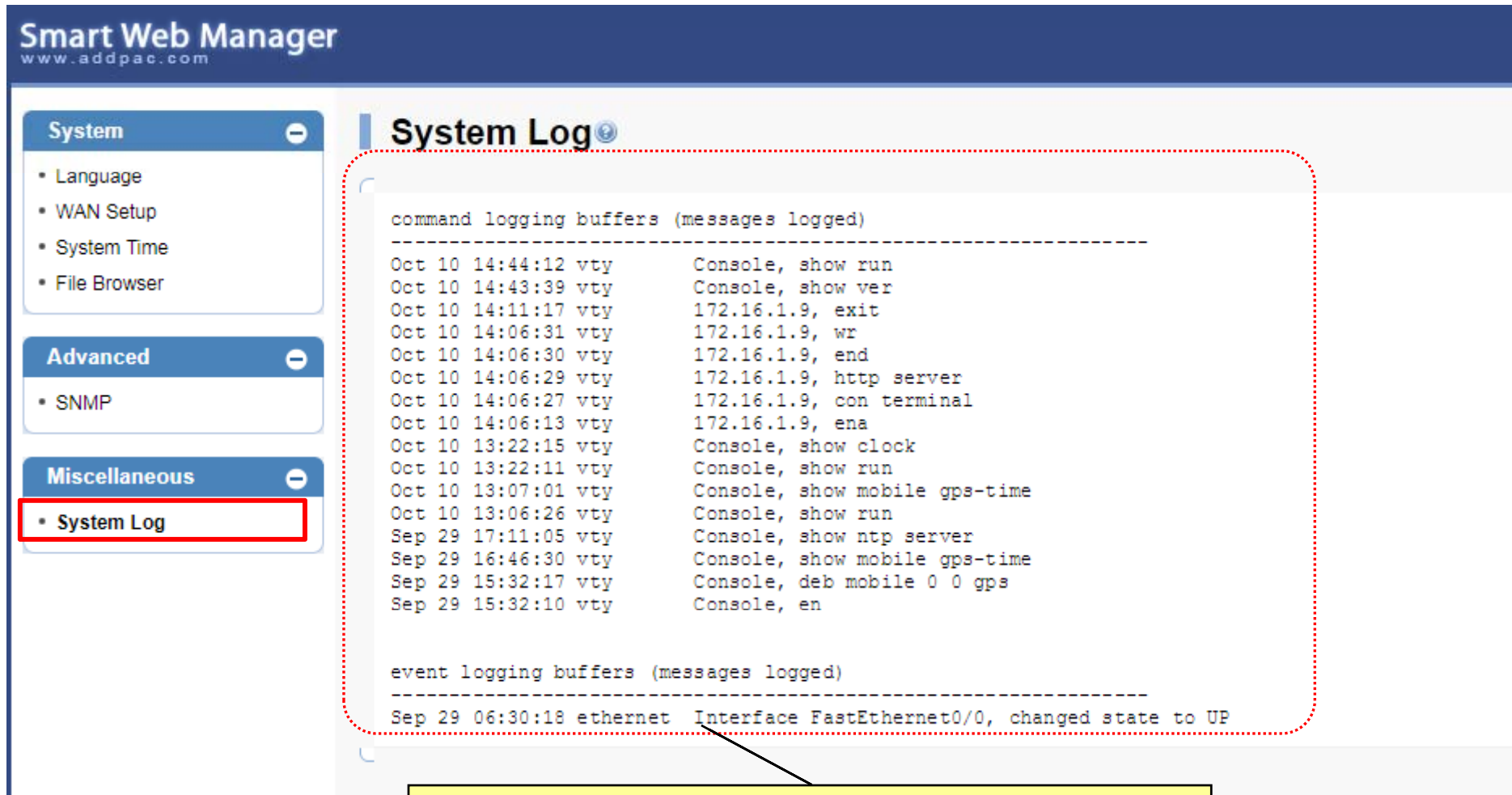
Name	Version	IP	Port	Control
<input type="text"/>	<input checked="" type="radio"/> v1 <input type="radio"/> v2c	<input type="text"/>	<input type="text"/>	Delete Add

- SNMP**
- Enable / Disable
  - Service Port
  - Community
  - Trap server



# Miscellaneous View

## System Log



The screenshot shows the Smart Web Manager interface. On the left, a sidebar contains three expandable sections: 'System' (with sub-items: Language, WAN Setup, System Time, File Browser), 'Advanced' (with sub-item: SNMP), and 'Miscellaneous' (with sub-item: System Log, which is highlighted with a red box). The main content area is titled 'System Log' and contains two sections of log data, each enclosed in a red dashed border. The first section is 'command logging buffers (messages logged)' and lists various console commands and their timestamps. The second section is 'event logging buffers (messages logged)' and shows a single event: 'Sep 29 06:30:18 ethernet Interface FastEthernet0/0, changed state to UP'. A yellow callout box at the bottom of the screenshot contains the text: 'Retrieve the system log – command and event log'.

Smart Web Manager  
www.addpac.com

**System**

- Language
- WAN Setup
- System Time
- File Browser

**Advanced**

- SNMP

**Miscellaneous**

- System Log**

### System Log

command logging buffers (messages logged)

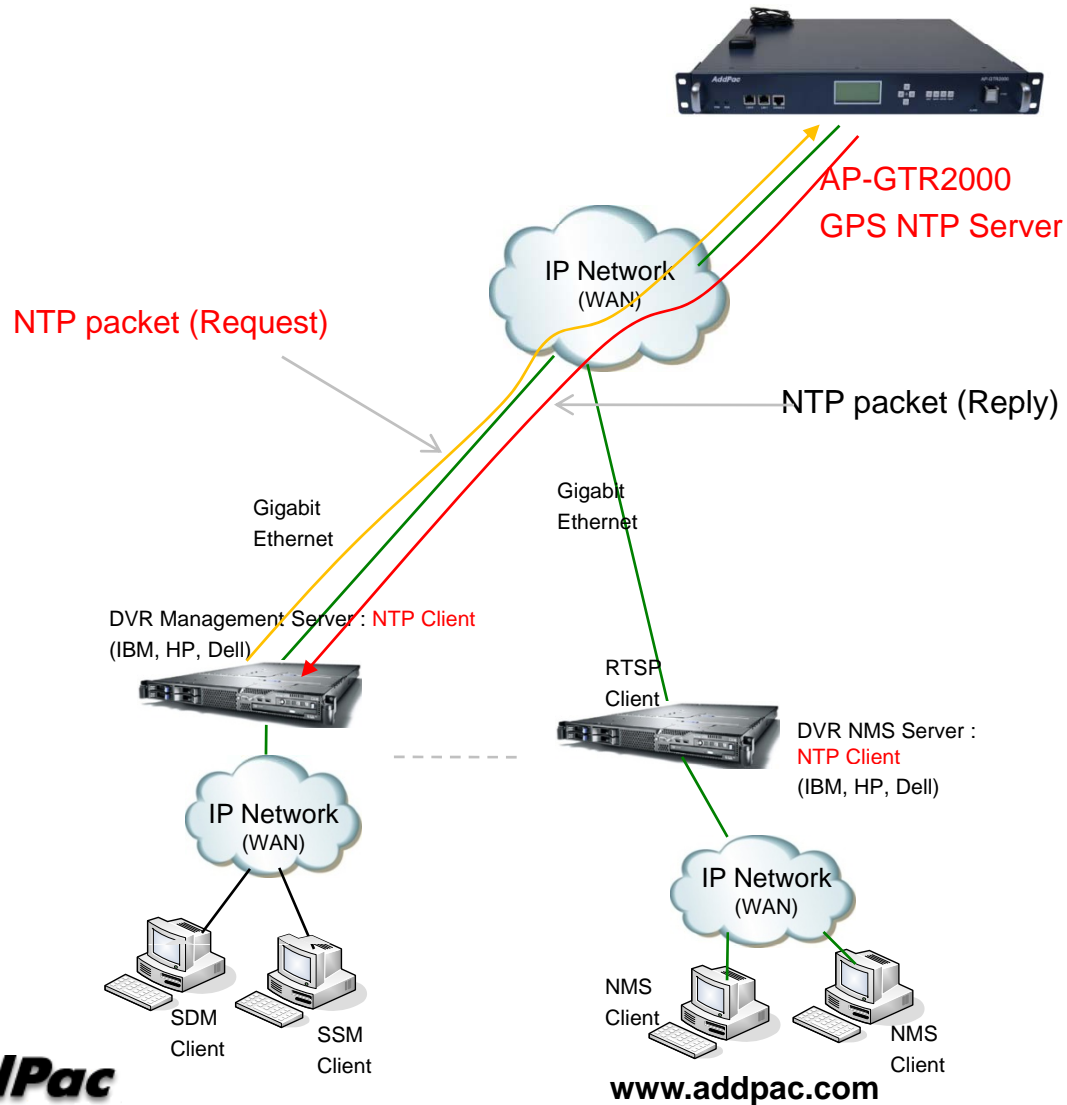
```
-----  
Oct 10 14:44:12 vty      Console, show run  
Oct 10 14:43:39 vty      Console, show ver  
Oct 10 14:11:17 vty      172.16.1.9, exit  
Oct 10 14:06:31 vty      172.16.1.9, wr  
Oct 10 14:06:30 vty      172.16.1.9, end  
Oct 10 14:06:29 vty      172.16.1.9, http server  
Oct 10 14:06:27 vty      172.16.1.9, con terminal  
Oct 10 14:06:13 vty      172.16.1.9, ena  
Oct 10 13:22:15 vty      Console, show clock  
Oct 10 13:22:11 vty      Console, show run  
Oct 10 13:07:01 vty      Console, show mobile gps-time  
Oct 10 13:06:26 vty      Console, show run  
Sep 29 17:11:05 vty      Console, show ntp server  
Sep 29 16:46:30 vty      Console, show mobile gps-time  
Sep 29 15:32:17 vty      Console, deb mobile 0 0 gps  
Sep 29 15:32:10 vty      Console, en
```

event logging buffers (messages logged)

```
-----  
Sep 29 06:30:18 ethernet Interface FastEthernet0/0, changed state to UP
```

Retrieve the system log – command and event log

# SNTP (Simple Network Time Protocol)





# Thank you!

**AddPac Technology Co., Ltd.**  
Sales and Marketing

Phone +82.2.568.3848 (KOREA)

FAX +82.2.568.3847 (KOREA)

E-mail [sales@addpac.com](mailto:sales@addpac.com)