



AP-VP280DM IP Video Phone

High Performance Next Generation IP Video Terminal Solution



Multi-Language OSD
Service

AddPac

AddPac Technology

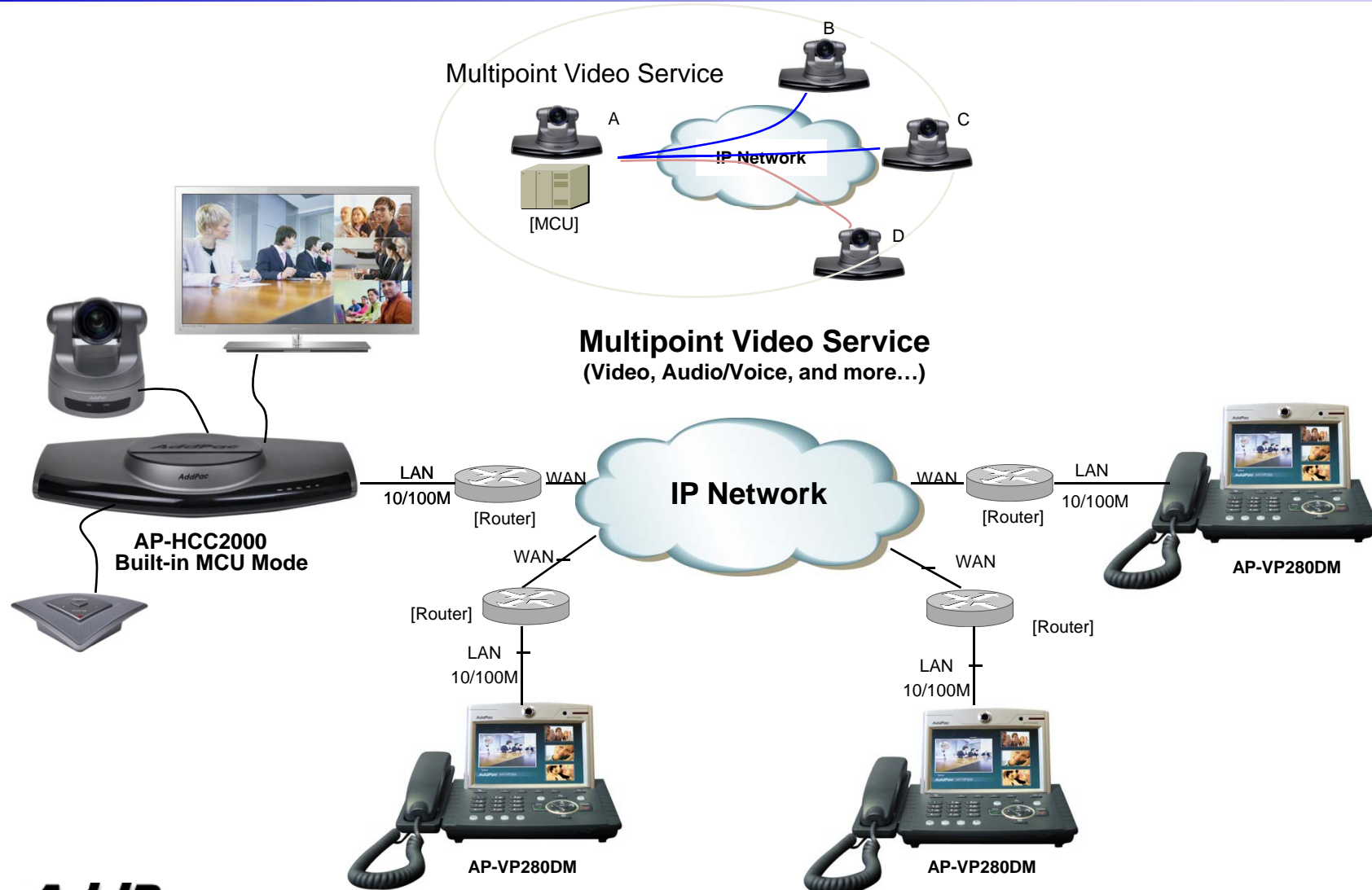
Sales and Marketing

Contents

- Network Diagram
- Select Language at Smart Web Manager
 - Main Screen
 - System
 - Call & Media
 - Miscellaneous
 - Ping, Device Control, Service, **Language Table**
- Select Language at OSD

Network Diagram

AP-VP280DM IP Video Phone





Smart Web Manager

Smart Web Manager

System Information (Main Screen)

The screenshot shows the Smart Web Manager interface with the following components:

- Main Menu:** A sidebar on the left containing categories like System, Call & Media, Door Access Control, and Miscellaneous.
- System Information:** A central table displaying system details such as H/W Version, S/W Version, Service Type, DACS, and SIP registration status.
- Information:** A panel on the right showing system model, type, and registration details.
- Description:** A panel on the right for displaying help messages.
- Tool Bar:** A top-right area with icons for system update, configuration backup, initialization, restart, and telnet.
- Work Space:** The central area where system information is displayed.

H/W Version	1.0
S/W Version	8.00.006
Service Type	Server-Client
DACS	172.17.114.20 (4080)
DACS Registration	Success
SIP	172.17.114.20 (5060)
SIP Registration	Success

AddPac Technology
Model : VAC200_G2
Type : Server-Client
DACS : 172.17.114.20(4080)
DACS Registration : Success
SIP : 172.17.114.20(5060)
SIP Registration : Success

Work Space
Display the AP-VAC200 system information like as H/W, S/W Version, SIP Registration Status, etc

Tool Bar
Provide frequently used tool like ac System Update, Configuration backup, Initialization, Restart, Telnet

Information
Display the Current system version and status summary

Description
Display the help message if you move mouse over main menu

Main Menu
For easy system setup, Provide the various menu and category

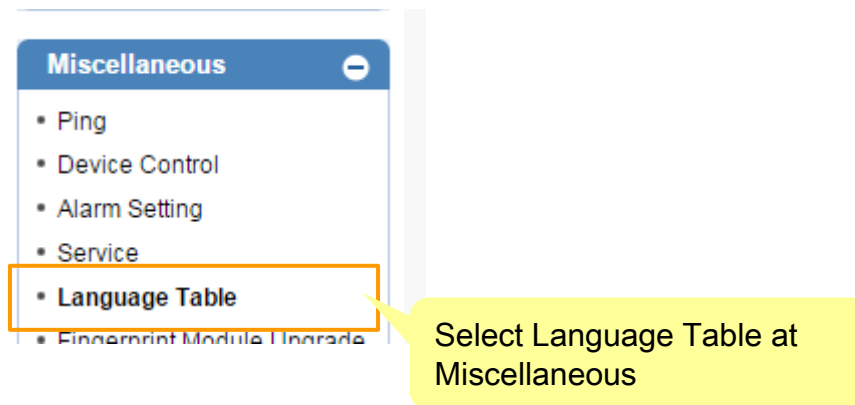
©AddPac Technology. all rights reserved.



Select Language

Smart Web Manager

Miscellaneous – Language Table



Smart Web Manager

Miscellaneous – Language Table

Language Table

Edit User Language

Select Language

Click on the Read button if you have language files to an existing

Language 한국어 English 한국어 Russian Etc

Read Write

Number	English Table	
1	Yes	
2	No	

Select Etc, except English, Korean, Russian

The screenshot shows a web interface for managing a language table. At the top, there is a title 'Language Table' and a sub-header 'Edit User Language'. Below this is a form with a 'Language' dropdown menu currently set to '한국어'. The dropdown menu is open, showing options: 'English', '한국어', 'Russian', and 'Etc'. The '한국어' option is highlighted with a blue selection bar. To the right of the dropdown are two buttons: 'Read' and 'Write', both with green checkmarks. Below the form is a table with two rows. The first row has '1' in the 'Number' column and 'Yes' in the 'English Table' column. The second row has '2' in the 'Number' column and 'No' in the 'English Table' column. There are three yellow callout boxes: one pointing to the 'Language' dropdown with the text 'Select Language', one pointing to the 'Read' button with the text 'Click on the Read button if you have language files to an existing', and one pointing to the 'Etc' option in the dropdown with the text 'Select Etc, except English, Korean, Russian'.

Smart Web Manager

Miscellaneous – Language Table

After editing is finished, click the Write button for save

Edit User Language

Language Read Write

Number	English Table	User Table
1	Yes	<input type="text" value="예"/>
2	No	<input type="text" value="아니오"/>
3	OK	<input type="text" value="확인"/>
4	Cancel	<input type="text" value="취소"/>
5	Continue	<input type="text" value="계속"/>
6	Ignore	<input type="text" value="무시"/>
7	Right Now	<input type="text" value="즉시수행"/>
8	Clear	<input type="text" value="삭제"/>
9	AM	<input type="text" value="오전"/>
10	PM	<input type="text" value="오후"/>

Type in the selected language to correspond to the English table. If you do not input in table list, default language for empty is English.

Smart Web Manager

Miscellaneous – Language Table

Edit Utility (Move & Clear)

Simply move your content in the language table

228 Touch Screen 터치 스크린

Table Move & Delete

Start (1~228)	End(1~228)	New Start(1~228)	Action
<input type="text"/>	<input type="text"/>	<input type="text"/>	<input type="button" value="✓ Move"/>
<input type="text"/>	<input type="text"/>		<input type="button" value="✓ Clear"/>

Simply clear your content in the language table



Thank you!

AddPac Technology Co., Ltd.
Sales and Marketing

Phone +82.2.568.3848 (KOREA)

FAX +82.2.568.3847 (KOREA)

E-mail sales@addpac.com