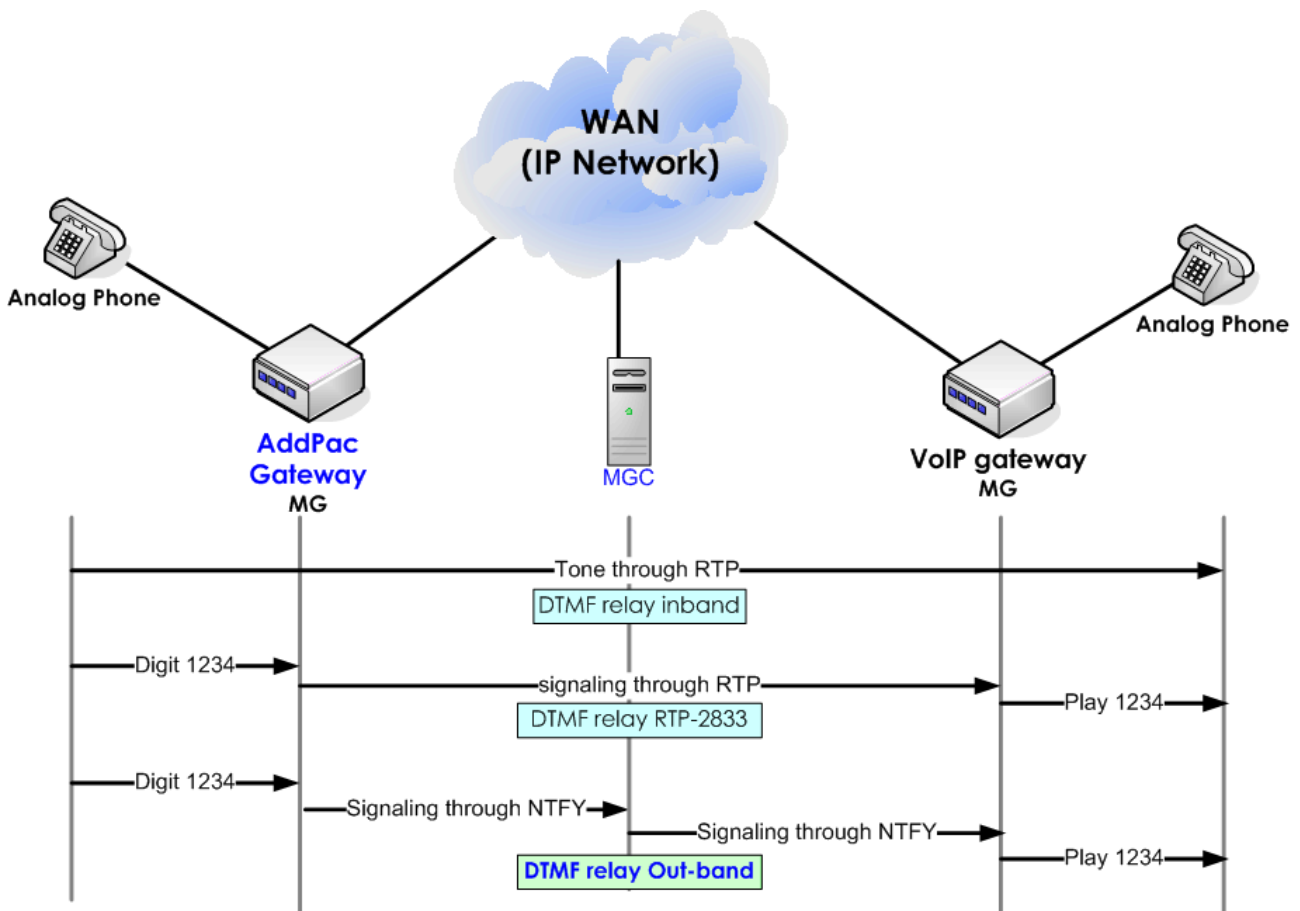


MGCP Out-Band(NTFY) DTMF Relay Function Added

Category	S/W Release Version	Date
MGCP	8.00	Apr. 2004

Function Description

AddPac MG(Media Gateway) supports three (3) kinds of dtmf-relay method; **inband dtmf-relay**, **outband dtmf-relay**(NTFY) and **rtp-2883**. The newly added **outband dtmf-relay** is a way to transport DTMF digits in a NTFY message. On the other hand, **inband dtmf-relay** and **rtp-2883** utilize RTP channel. **rtp-2883** transports DTMF's cadence info along with DTMF info as a signal which helps more accurate reproduction of the digits on the remote terminals. In case of **inband dtmf-relay**, the DTMF is relayed via voice channels, thus it can be the less distorted means when the network is stable. The **outband dtmf-relay** transmits only digit information via MGCP signaling channel. The below configure explains the three DTMF relay types.



Compatibility

The **rtp-2833** is the standard defined by RFC. Also, it utilizes RTP channel, thus the compatibility is not the issue here. Also, it is same for the **inband dtmf-relay**. However, in case of **outband dtmf-relay**, the DTMF is transmitted via signaling message between MGC and MG, the compatibility issue might be MGC dependant.

Related Commands

```
(config)# mgcp
```

```
(config-mgcp)# dtmf-relay ?
```

```
rtp-2833
```

DTMF relay by RTP payload defined by RFC 2833

```
out-of-band
```

DTMF relay by out-of-band signal

Default: no dtmf-relay (Inband dtmf-relay)