

# Gigabit Ethernet IP Phone (LAN-to-LAN Performance)



**AddPac**

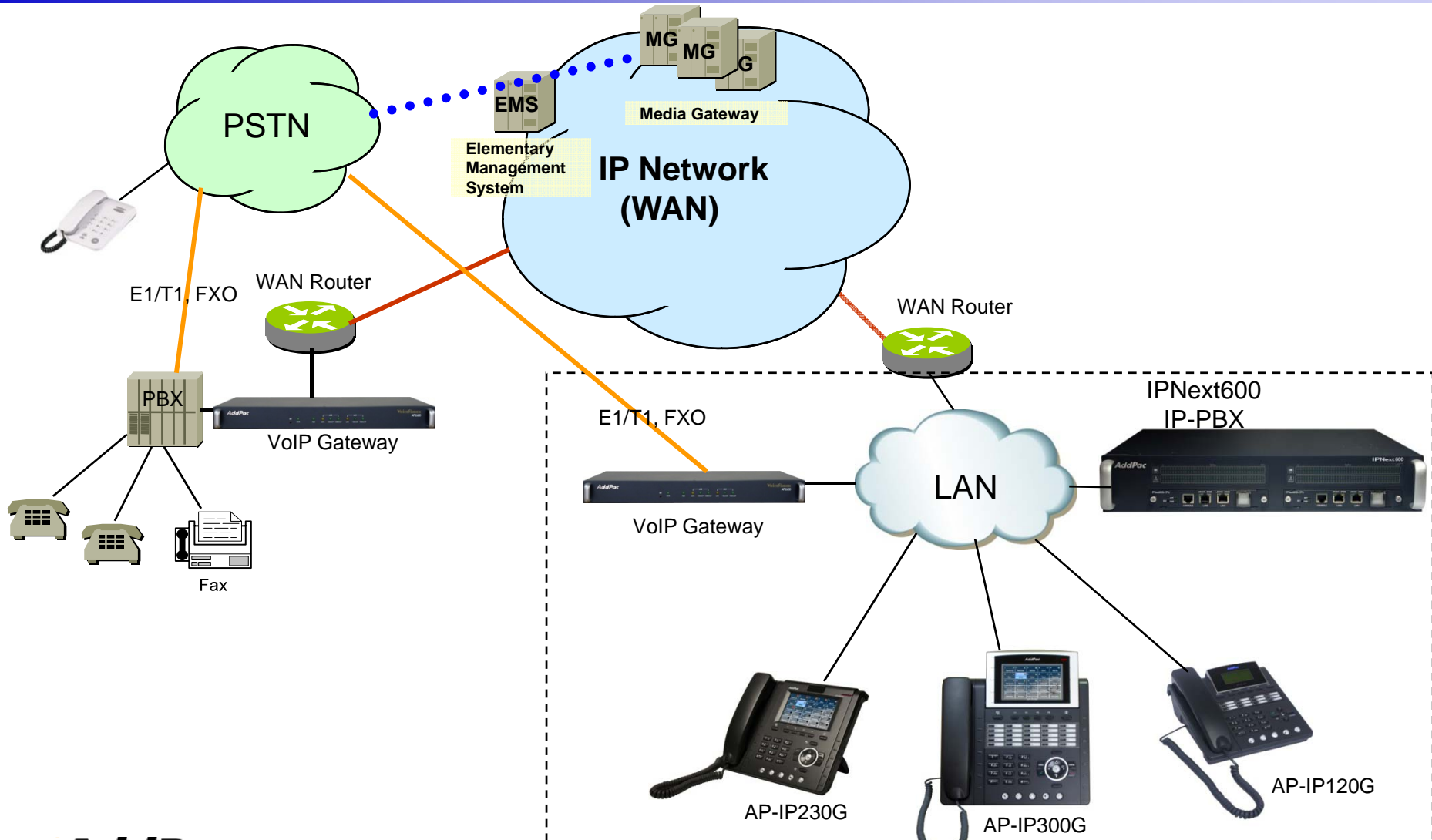
**AddPac Technology**

Sales and Marketing

# Contents

- Gigabit Ethernet IP Phone Service Diagram
- Gigabit Ethernet IP Phone Comparison Table
- Gigabit Ethernet IP Phone Series
  - AP-IP300G
  - AP-IP230G
  - AP-IP120G
- LAN-to-LAN Performance by SmartBit Measurement System

# Gigabit Ethernet IP Phone Service Diagram



# Gigabit Ethernet IP Phone Comparison Table

	AP-IP300 	AP-IP230 	AP-IP120 
LCD Size	4.3 Inch Color LCD	5 Inch Color LCD	4 Text Line Graphic LCD
Touch Screen	N/A	Support	N/A
Speed-Dial Keys	25 Key with Presence LED	Touch Screen based 25 Keys	12 Key with Presence LED
Voice Codec	G.711/G.726/ G.729/G.723	G.711/G.726/ G.729/G.723	G.711/G.726/ G.729/G.723
Signaling	H.323/SIP	H.323/SIP	H.323/SIP
3-Party Conversation	Support	Support	Support
Gigabit Ethernet Port	2	2	2
PoE(Optional)	Support	Support	Support
FXO(Optional)	Support	Support	Support



# AP-IP300G

## Gigabit Ethernet IP Phone

# Main Features

## AP-IP300G Premium IP Phone

- 4.3 Inch Color LCD Display
- 25 Speed-Dial Keys with User Presence LED
- 4 Soft Key for Call Control
- Various Function Keys
- H.323/SIP Concurrent VoIP Signaling Stack Embedded
- High-performance Voice Codec Support
  - G.711/G.726/G.729/G.723, etc
- **Two(2) 10/100/1000Mbps Gigabit Ethernet**
- High Quality Speaker Phone Features (Acoustic Echo Canceller)
- Powerful Network Protocols (PPPoE, DHCP, Static Routing, etc)
- Firmware Upgradeable Architecture
- SNMS (Smart Network Management System) for Large Scale Deployment
- Advanced Voice QoS Mechanism

# Hardware Specification

## AP-IP300G Premium IP Phone

RISC  
CPU

High-end  
DSP

- RISC Microprocessor Computing Power
- 4.3 Color LCD
- 25 Speed Dial Keys with User Presence LED
- High-end Programmable DSP Hardware Architecture
- High quality Audio and Voice Interface
  - Stereo Audio Input & Output Connector
- Network Interface
  - Two(2) 10/100/1000Mbps Gigabit Ethernet
  - One(1) USB 1.0 Interface
- PSTN Interface
  - One(1) FXO(RJ11) interface
- Power Supply
  - *External DC adaptor (5V)*
  - *Power Switch*
  - *PoE (Power over Ethernet)*

# Hardware Specification

AP-IP300G Premium IP Phone

RISC  
CPU

High-end  
DSP

## Hardware Specification



**AddPac**

[www.addpac.com](http://www.addpac.com)



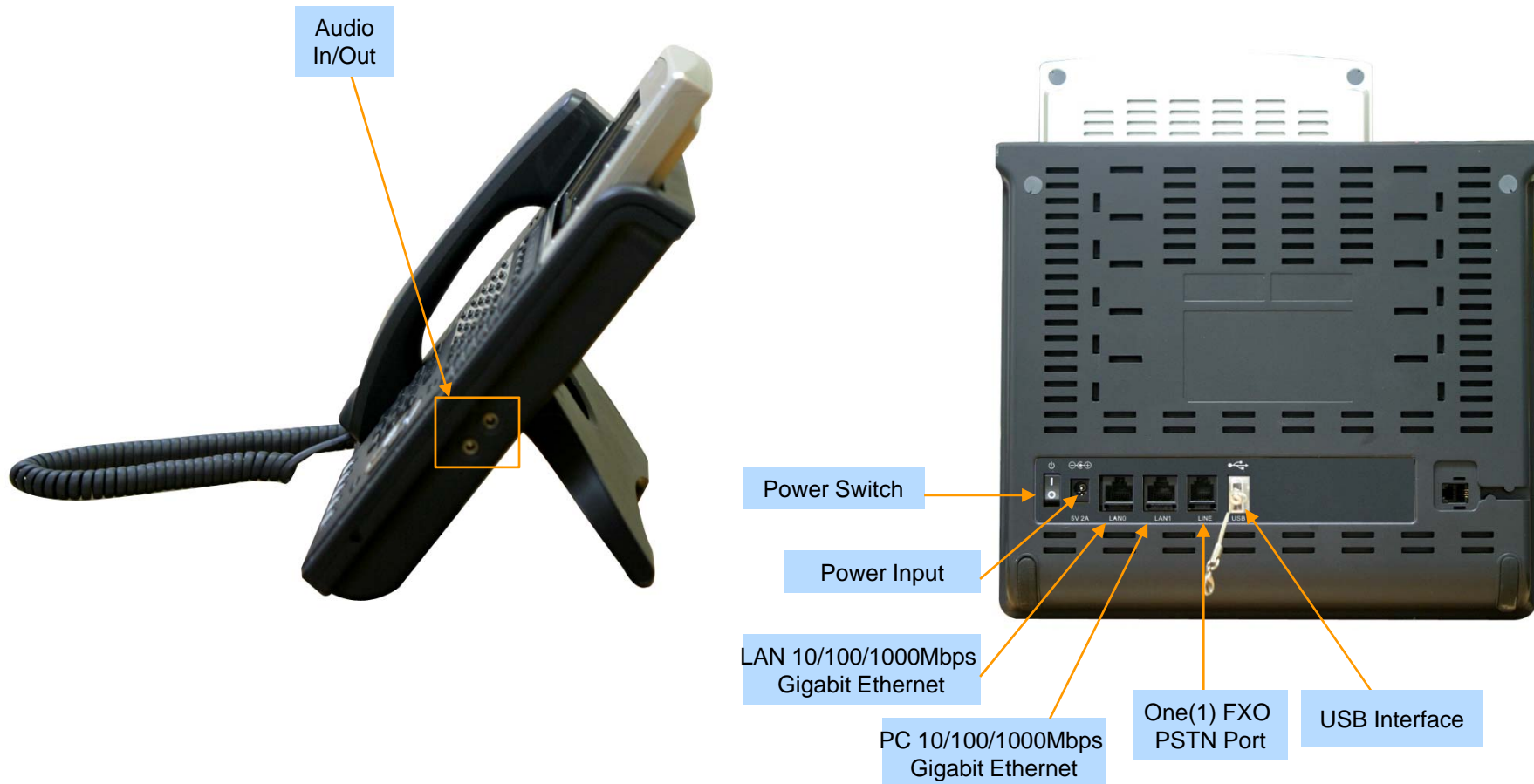
# Hardware Specification


AP-IP300 Premium IP Phone

RISC  
CPU

High-end  
DSP

## Hardware Specification





# AP-IP230G

## Gigabit Ethernet IP Phone

# Main Features

## AP-IP230G Premium IP Phone

- 5 Inch Color LCD Display, Touch Screen
- Touch Screen based 25 Speed-Dial Keys
- 4 Soft Key for Call Control
- Various Function Keys
- H.323/SIP Concurrent VoIP Signaling Stack Embedded
- High-performance Voice Codec Support
  - G.711/G.726/G.729/G.723, etc
- Two(2) 10/100/1000Mbps Gigabit Ethernet
- High Quality Speaker Phone Features (Acoustic Echo Canceller)
- Powerful Network Protocols (PPPoE, DHCP, Static Routing, etc)
- Firmware Upgradeable Architecture
- SNMS (Smart Network Management System) for Large Scale Deployment
- Advanced Voice QoS Mechanism

# Hardware Specification

## AP-IP230G Premium IP Phone

RISC  
CPU

High-end  
DSP

- RISC Microprocessor Computing Power
- 5 Inch Color LCD with Touch Screen
- High-end Programmable DSP Hardware Architecture
- High quality Audio and Voice Interface
  - Stereo Audio Input & Output Connector
- Network Interface
  - Two(2) 10/100/1000Mbps Gigabit Ethernet
  - One(1) USB 1.0 Interface
- PSTN Interface
  - One(1) FXO(RJ11) interface
- Power Supply
  - *External DC adaptor (5V)*
  - *Power Switch*
  - *PoE (Power over Ethernet)*

# Hardware Specification

AP-IP230G Premium IP Phone

RISC  
CPU

High-end  
DSP

## Hardware Specification

5 Inch  
LCD with Touch  
Screen



**AddPac**

[www.addpac.com](http://www.addpac.com)

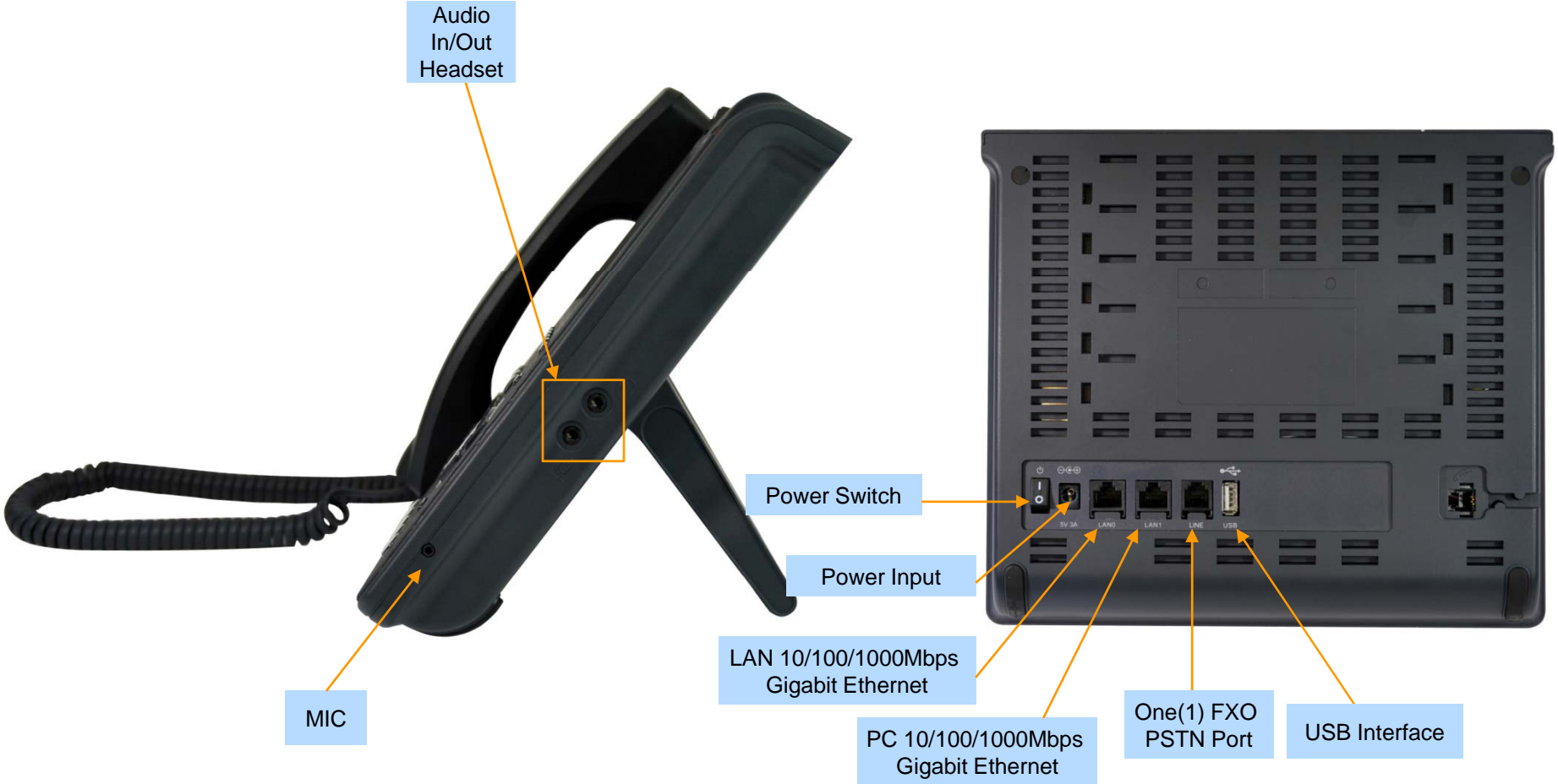
# Hardware Specification

AP-IP230G Premium IP Phone

RISC  
CPU

High-end  
DSP

## Hardware Specification





# AP-IP120G

## Gigabit Ethernet IP Phone

# Main Features

## AP-IP120G IP Phone

- 4 Text Line Graphic LCD Display
- 12 Speed-Dial Keys with User Presence LED
- 4 Soft Key for Call Control
- Various Function Keys
- H.323/SIP Concurrent VoIP Signaling Stack Embedded
- High-performance Voice Codec Support
  - G.711/G.726/G.729/G.723, etc
- Two(2) 10/100/1000Mbps Gigabit Ethernet
- High Quality Speaker Phone Features (Acoustic Echo Canceller)
- Powerful Network Protocols (PPPoE, DHCP, Static Routing, etc)
- Firmware Upgradeable Architecture
- SNMS (Smart Network Management System) for Large Scale Deployment
- Advanced Voice QoS Mechanism



# Hardware Specification

## AP-IP120G IP Phone

RISC  
CPU

High-end  
DSP

- RISC Microprocessor Computing Power
- 4 Text Line Graphic LCD
- Navigation Key for Menu Search
- High-end Programmable DSP Hardware Architecture
- High quality Audio and Voice Interface
  - Stereo Audio Input & Output Connector
- Network Interface
  - Two(2) 10/100/1000Mbps Gigabit Ethernet
- PSTN Interface
  - One(1) FXO(RJ11) interface
- Power Supply
  - *External DC adaptor (5V)*
  - *PoE (Power over Ethernet)*

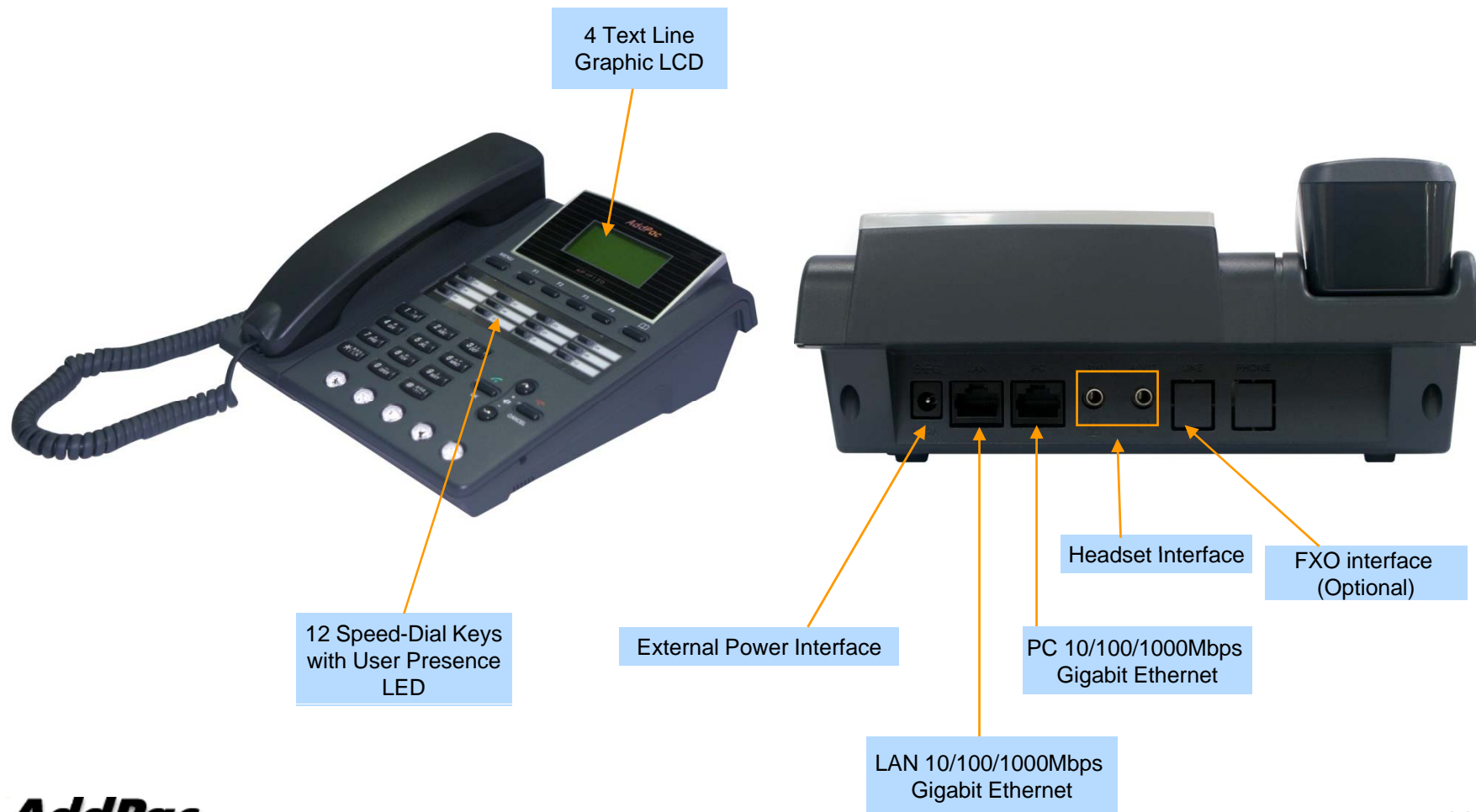
# Hardware Specification

AP-IP120G IP Phone

RISC  
CPU

High-end  
DSP

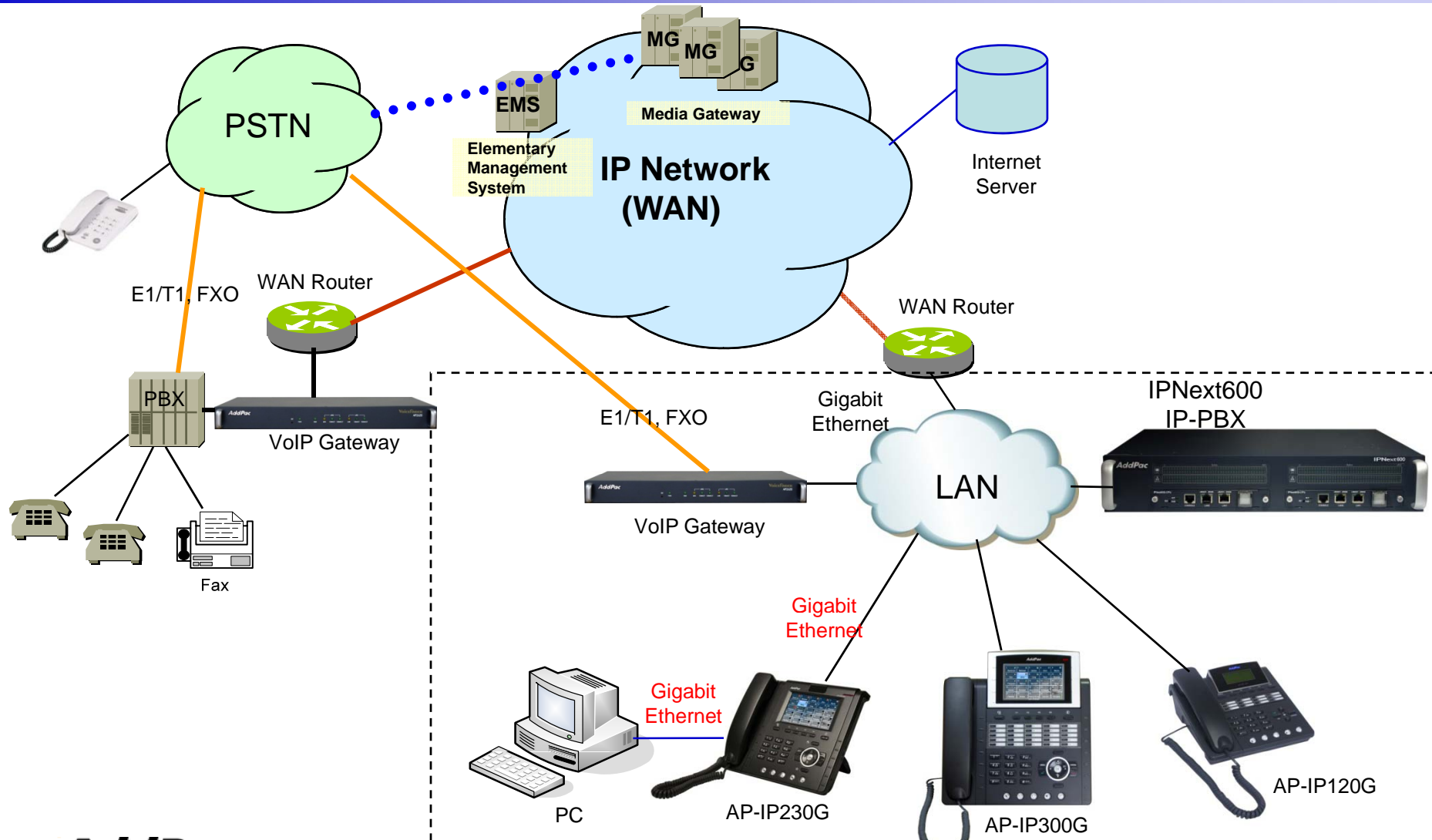
## Hardware Specification



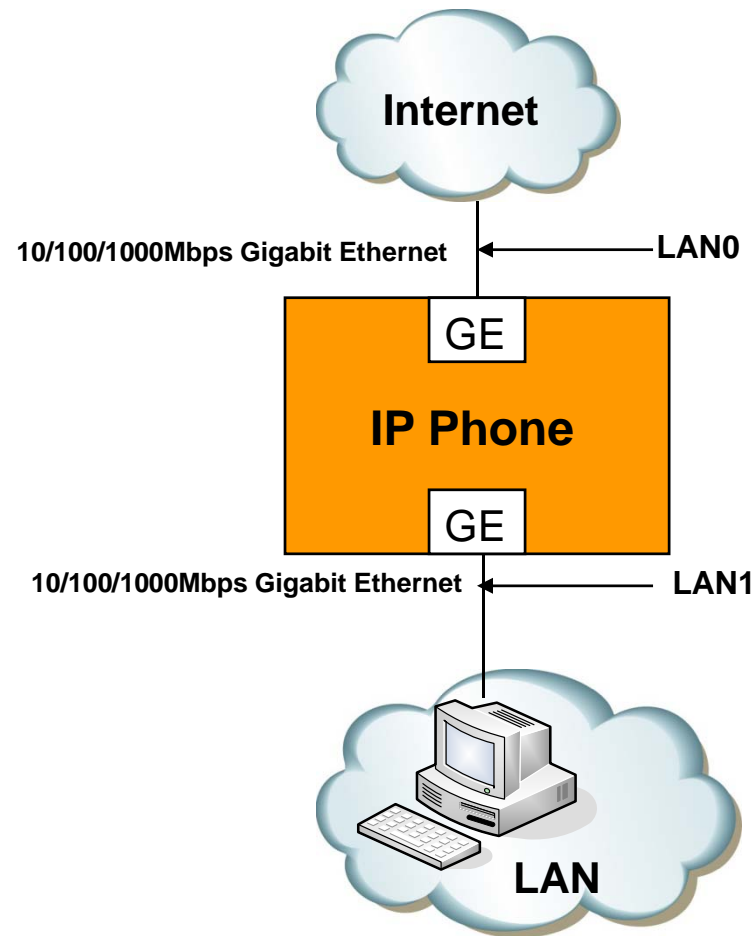


# LAN-to-LAN Performance

# Gigabit Ethernet IP Phone Service Diagram



# Gigabit Ethernet IP Phone Interface



# Gigabit Ethernet IP Phone Network Service

	IP Routing	NAT	IP Sharing	Bridge Mode
AP-P120G	Support	Support	Support	Support
AP-IP230G	Support	Support	Support	Support
AP-IP300G	Support	Support	Support	Support

# GE IP Phone LAN-to-LAN Performance

## Bridge Mode Performance (Smart Bit)

	64byte	512byte	1024byte	1500byte
AP-IP230G	1000Mbps (100 % full)	1000Mbps (100 % full)	1000Mbps (100 % full)	1000Mbps (100 % full)

## IP Routing Mode Performance (Smart Bit)

	64byte	512byte	1024byte	1500byte
AP-IP230G	7022 (5M)	7230 (31M)	7150 (61M)	7030 (86M)

# Gigabit Ethernet IP Phone Series

# Thank you!

**AddPac Technology Co., Ltd.**  
Sales and Marketing

Phone +82.2.568.3848 (KOREA)

FAX +82.2.568.3847 (KOREA)

E-mail : sales@addpac.com