



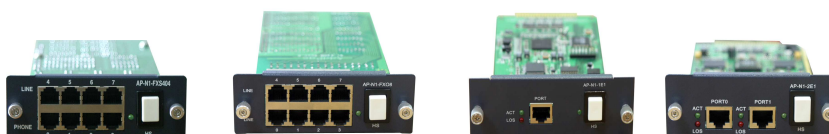
AP1820 Dual Power NGN VoIP Gateway

VoiceFinder AP1820 is a new cutting edge BcN (Broadband Convergence Network) VoIP gateway supporting maximum 16 ports of analog voice interface and two(2) digital E1/T1 voice interface. Analog and digital interface of AP1820 provide an optimized call scenario when it interoperates with conventional PBX. Also, this AP1820 VoIP gateway supports dual power supply for power redundancy service. Compact cost effective design and system architecture of AP1820 provides customer satisfaction in high quality, performance and system reliance.

VoiceFinder AP1820 is a mid-range VoIP gateway providing total 16 analog interface ports or two(2) digital E1/T1 interfaces. It is suitable for general enterprises, small and public offices. It has functions as a media gateway which interoperates with IP-PBX and it enables to replace small and mid size analog PBX. Especially AP1820 provides an optimal solution of VoIP communications in telephony environments that using telephone lines and PBX to get connect with a head office.

AP1820 in the aspect of hardware architecture is designed to provide a high performance service as a media gateway. It provides several LEDs in front panel so that various operational status of VoIP ports can be checked. Two of 10/100Mbps fast Ethernet port and RS232C console interface on front panel of A1820 are the base for delivering various network services such as LAN-to-LAN routing, Bridge and NAT/PAT service etc

Various VoIP gateways of AddPac are approved for its capability and reliability in world wide markets. This AP1820 will be an excellent choice for BcN (Broadband Convergence Network) environment by supporting concurrent triple stack such as H323, SIP and QoS (Quality of Service) for high quality of communication.



AP-N1-FXS404

AP-N1-FXO8

AP-N1-E1

AP-N1-2E1

APOS Internetworking Software

APOS™ (AddPac Internetworking Operating System) is AddPac's unique software which supports data, voice, video and security. It provides scalability, reliability, stability and QoS for internetworking solutions. It also provides optimized performance and industry standard network functionality with easy-to-use, easy-to-install and maintenance.

Product Highlights

- Powerful RISC Microprocessor Architecture
- Two(2) Slot for VoIP Interface Module and Dual Power Supply for Power Redundancy
- 8 Port FXS, 8 Port FXO, 4-Port FXS & 4-Port FXO, 4 Port E&M VoIP Module and 1-Port E1/T1, 2-Port E1/T1 Module
- VoIP Module Hot-Swap Function Support
- Two(2) 10/100Mbps Fast Ethernet Interface
- RS-232C (RJ45) Console Port for CLI Interface
- Front Panel LED for Real-time Status Monitoring
- VoIP Signaling Stack : SIP, H.323
- Multi Protocol Routing for LAN and WAN Access
- Voice Processing Features
 - VAD, DTMF, CNG, G.168, T.38 G3 Fax Relay
 - G.723.1, G.729A, G.726, G.711, etc
- High-performance IP-Routing Capability with Reliability
- Static and IEEE 802.1Q VLAN Routing Protocols including VRRP
- SNMP MIB V2 for Network Management
- Standard & Extended Access List for Security
- Essential Scalability Features such as DHCP Server & Relay, NAT/PAT, IEEE Transparent Bridging, and Debugging/Diagnostics, etc.
- Remote Firmware Upgrade Through FTP & TFTP Protocol
- CISCO-style CLI (Command Line Interface)
- APOS Guarantees Scalability, Reliability, Stability

AP1820 Applications

- Inter-Office Internet Telephony System
- VoIP Gateway for Enterprises
- Media Gateway of IP-PBX

Hardware Specification

- RISC Microprocessor (CPU)
- Memory
 - System memory 4Mbyte Flash Memory
 - Main memory 64Mbyte SDRAM
- VoIP Interface Modules with Hot-Swap Function
 - AP-N1-FXS8 8-port FXS Interface Module (8 x RJ11)
 - AP-N1-FXS4O4 4-port FXS Interface & 4-Port FXO Interface Module (8 x RJ11)
 - AP-N1-FXO8 8-port FXO Interface Module (8 x RJ11)
 - AP-N1-E&M4 4-port E&M Interface Module (4 x RJ45)
 - AP-N1-E1 1-port E1/T1 Interface Module (1 x RJ45)
 - AP-N1-2E1 2-port E1/T1 Interface Module (2 x RJ45)
- Ethernet Interface
 - 10/100Mbps 2-port Ethernet (RJ-45)
- Console Port
 - RS-232C 1-port Console (RJ-45)

Power & Operational environment

- Power Supply VA 110~220V, 50/60Hz, 5V, 8A, 40Watt, Dual Power Supply
- Temperature 0~+45 (operating)
- Temperature -40~+85 (storage)
- Humidity 5%~95%

Dimensions

- H x W x D : 55 x 440 x 267 (mm)
- Weight : 3.5 (Kg)

IP Routing Protocol

- Static and IEEE802.1Q VLAN Routing

WAN Protocol

- Broadband IP Network
- PPPoE
- Standard Compliant WAN Network Protocol

Voice over IP Service

- H.323, SIP Concurrent VoIP Signaling Protocol
- ISDN-PRI, R2 Digital Interface Signaling Protocol
- VAD, DTMF, CNG, G.168, T.38 FAX Relay
- Voice Codec : G.723, G.729, G.726, G.711, etc
- High Level VoIP Signaling Debugging Features
- Polarity Inversion Feature
- Various VoIP Features
- Interoperable with Diverse VoIP Gateways
- Interoperable with Diverse VoIP Gatekeeper, SIP Proxy

Operation & Management

- Performance Analyzing (Process, CPU, Interface)
- Configuration Backup and Restore for APOS Management
- Debugging and Diagnosis Features
- System Booting/Rebooting through Watch Dog
- Data Logging Features
- IP Traffic Statistics through Accounting
- Debugging/Diagnostic

Network Management

- Standard SNMP Agent (MIB v2) Support
- Console, Telnet, Web Based Management
- Remote Download via FTP/TFTP
- Remote Firmware Upgrade using FTP/TFTP

Traffic QoS Control

- Traffic QoS Control Feature For Services
- Voice, Data Prioritizing Control
- Various QoS Algorithm Support

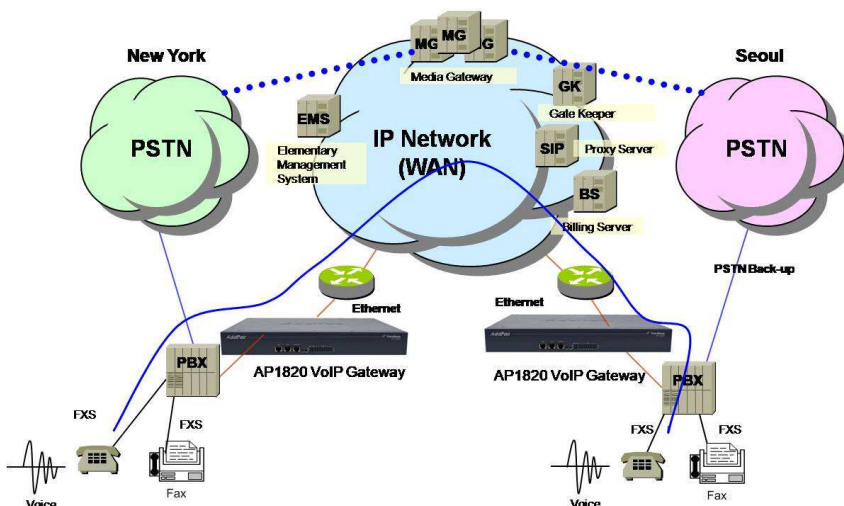
Security Feature

- IP Packet Filtering / Access List
- Access Control and Data Protections
- Enable/Disable for Specific Protocols
- Multi-level User Account Management
- Auto-disconnect for Telnet/Console Sessions
- PPP User Authentication Support
 - Password Authentication Protocol (PAP)
 - Challenge Handshake Authentication Protocol (CHAP)

Other Features

- DHCP Server and Relay
- Network Address Translation (NAT)
- Port Address Translation (PAT)
- Transparent Bridging (IEEE Standard)
 - Spanning Tree Bridging Protocol
 - Concurrent Routing and Bridging
- NTP (Network Time Protocol)
- Cisco Style Command Line Interface
- Standard Compliant Network Protocol
- AddPac Proprietary IP Sharing
- MAC Address Filtering
- DNS Proxy

AP1820 Network Dia-



Ordering Information

- AP1820-01 : AP1800 Standard Configuration
- Two(2) Fast Ethernet Port
 - One(1) Console Port
 - RISC CPU,
 - 4MB Flash, 64MB SDRAM
 - Dual Power Supply
 - APOS v8.xx Manual
- CAB-LAN Ethernet Cable
 - CAB-CON RS-232C Console Cable
 - AP-N1-FXS8 8-port FXS Module
 - AP-N1-FXS4O4 4-port FXS&FXO Module
 - AP-N1-FXO8 8-port FXO Module
 - AP-N1-E&M4 4-Port E&M Module
 - AP-N1-E1 1-port E1/T1 Module
 - AP-N1-2E1 2-port E1/T1 Module