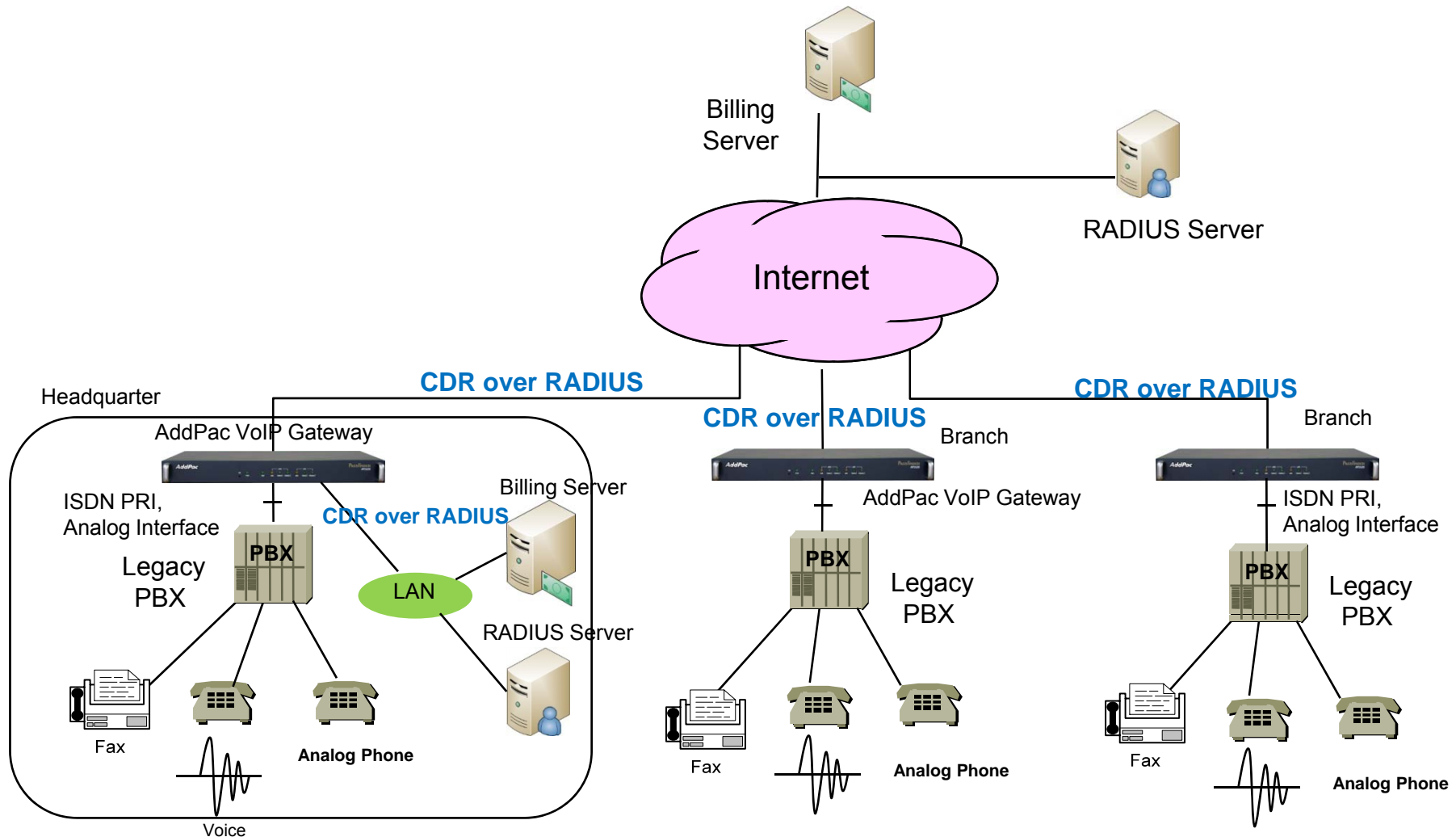




# Contents

- Network Diagram for CDR Service
- VoIP Gateway CDR Features
- CDR over RADIUS Features
- CDR Data Field

# Network Diagram

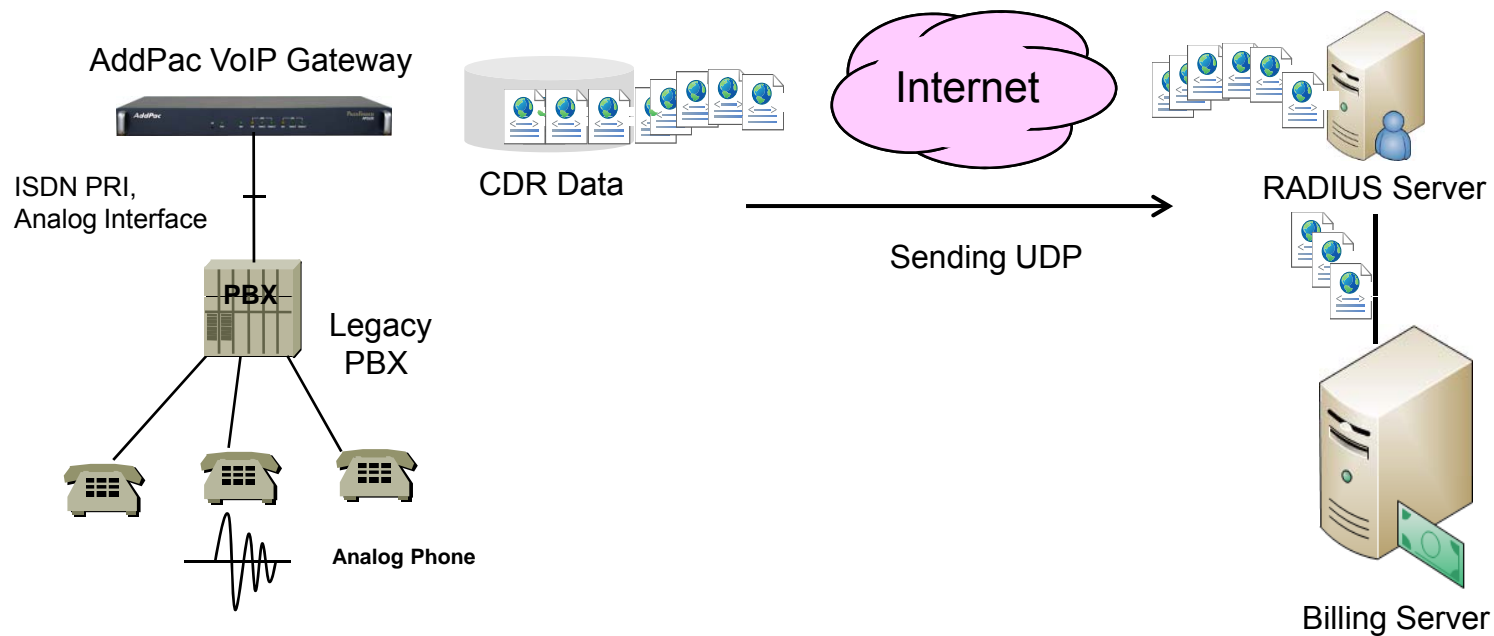


# VoIP Gateway CDR Features

- AddPac VoIP Gateway Products support a feature of CDR(Call Detail Records)
  - CDR field parameters for RAIDUS Server
  - One CDR information is created when the call ends. It is composed of 60 data field values

# CDR over RADIUS Features

CDR can be transmitted to RADIUS server by using VoIP Gateway Series RADIUS message.



# CDR Data Field

Data Field Names	Description
cdrRecordType globalCallId_ClusterID globalCallId_callManagerId globalCallId_callId	<b>Call Identifier (mandatory)</b>
dateTimeOrigination dateTimeConnect dateTimeDisconnect duration	<b>Timestamp and Duration</b>
callingPartyNumber lastRedirectDn origCalledPartyNumber finalCalledPartyNumber	<b>Extension Number</b>
callingPartyNumberPartition lastRedirectDnPartition origCalledPartyNumberPartition finalCalledPartyNumberPartition	<b>Partition Information</b>
callingPartyLoginUserId finalCalledPartyLoginUserId	<b>User Information</b>
origDeviceName origNetAddr origNetPort origNodeid origSpan destDeviceName destNodeid destSpan destNetAddr destNetPort	<b>Device Information</b>

Data Field Names	Description
origMediaTransportAddress origMediaTransportPort origMediaCap_PayloadCapability origMediaCap_MaxFramePerPacket origVideoCap_Codec origVideoCap_Bandwidth origVideoCap_Resolution origVideoTransportAddress origVideoTransportPort destMediaTransportAddress destMediaTransportPort destMediaCap_PayloadCapability destMediaCap_MaxFramePerPacket destVideoCap_Codec destVideoCap_Bandwidth destVideoCap_Resolution destVideoTransportAddress destVideoTransportPort	<b>Media Channel Information</b>
origLegCallIdentifier destLegIdentifier destConversationId	<b>Call Leg Identifier</b>
origCause_Value origCallTerminationOnBehalfOf lastRedirectRedirectOnBehalfOf lastRedirectReason joinOnBehalfOf destCallTerminationOnBehalfOf origCalledPartyRedirectReason origCalledPartyRedirectOnBehalfOf destCause_Value comment	<b>State Transition Reason</b>



# Thank you!

**AddPac Technology Co., Ltd.**  
Sales and Marketing

Phone +82.2.568.3848 (KOREA)

FAX +82.2.568.3847 (KOREA)

E-mail [sales@addpac.com](mailto:sales@addpac.com)