

AP-AC50

IP Voice Door Phone

High Performance IP Voice Door Phone Solution

Interworking with Legacy PBX



AP-AC50

AddPac

AddPac Technology

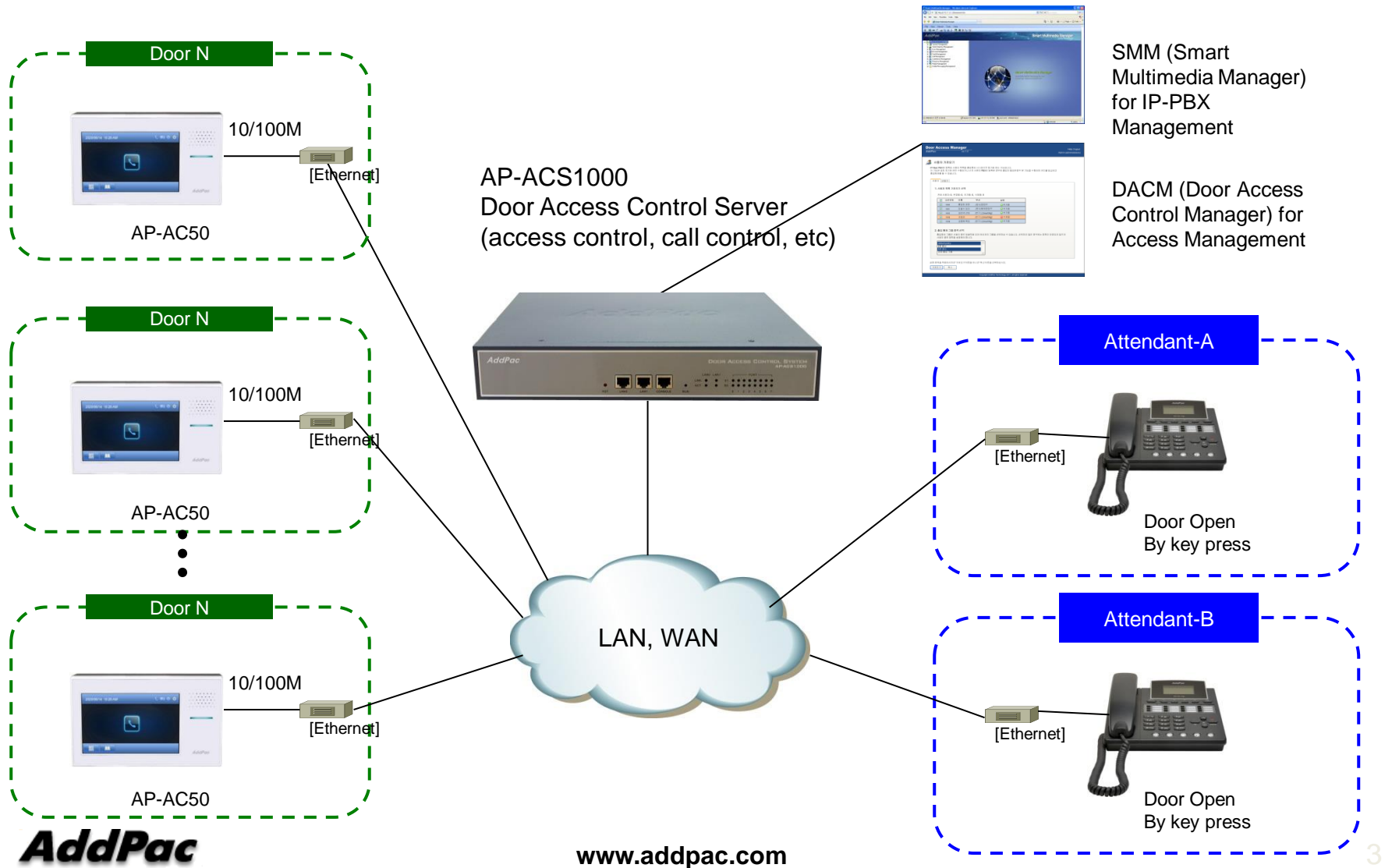
Sales and Marketing

Contents

- AP-AC50 Network Diagram
 - All IP Environment
 - Legacy PBX Environment
- AP100 1-Port VoIP Gateway for Legacy PBX Interworking

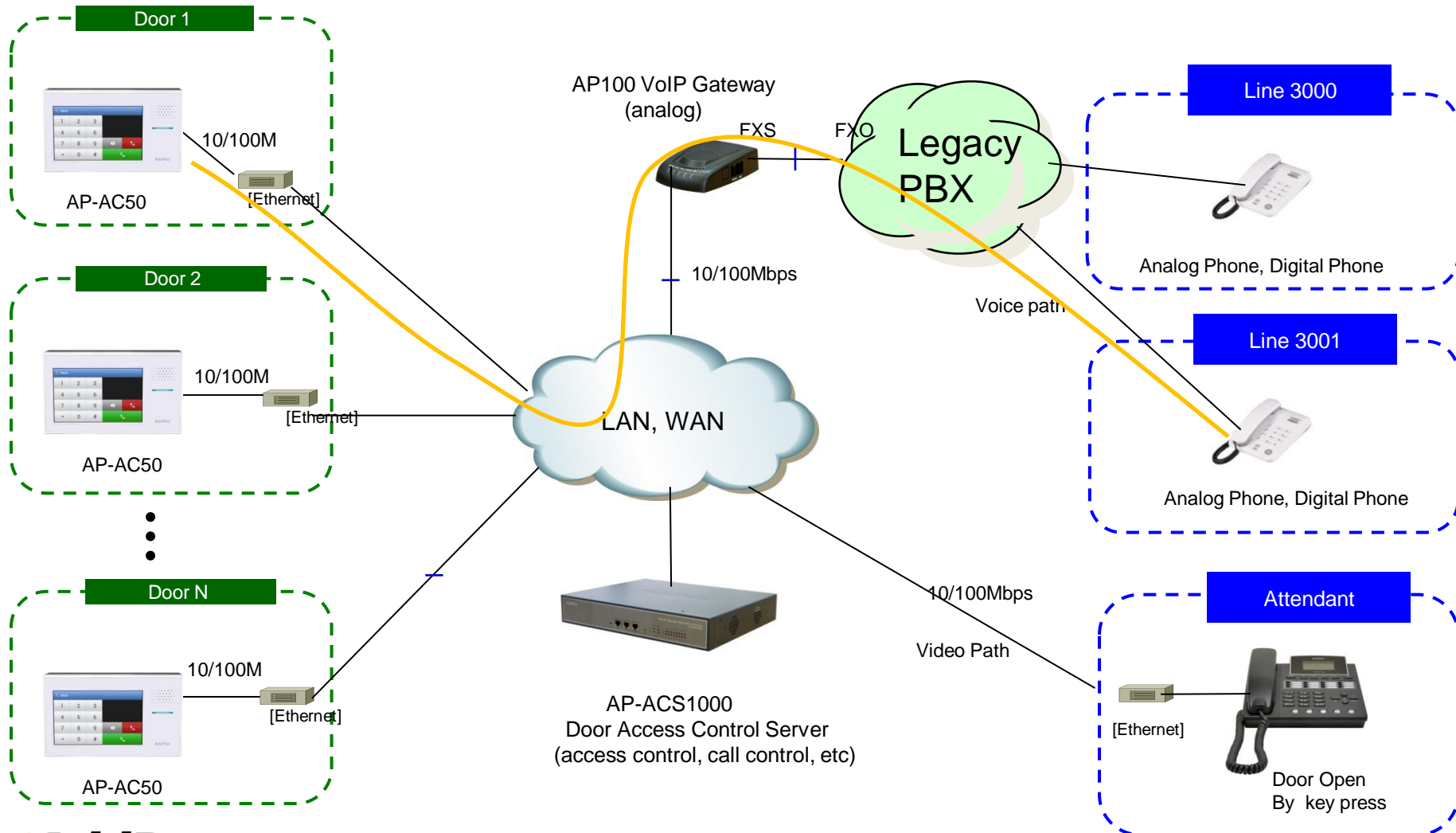
Network Diagram

All IP Environment



Network Diagram

Legacy PBX Environment



AP100 VoIP Gateway



Product Overview

- H.323/SIP Dual Concurrent Stack Embedded
- High Performance RISC & Programmable DSP Architecture
- High Performance Analog Telephone Adaptor Solution
- 1-Port FXS Interface
- Two(2) 10/100Mbps Fast Ethernet (IP Share ,etc)
- High Performance LAN-to-LAN Routing Capability
- G.711/G.726//G.729a/G.723.1, T.38 Fax , VAD, etc
- Powerful Network Protocols (PPPoE, DHCP, Static Routing, etc)
- Firmware Upgradeable Architecture
- SNMS (Smart Network Management System) for Large Scale Deployment
- Advanced Voice QoS Mechanism
- Small, Light and Compact Design
- Power Switch for Stability and Status LEDs

Hardware Specification

RISC
CPU

High-end
DSP

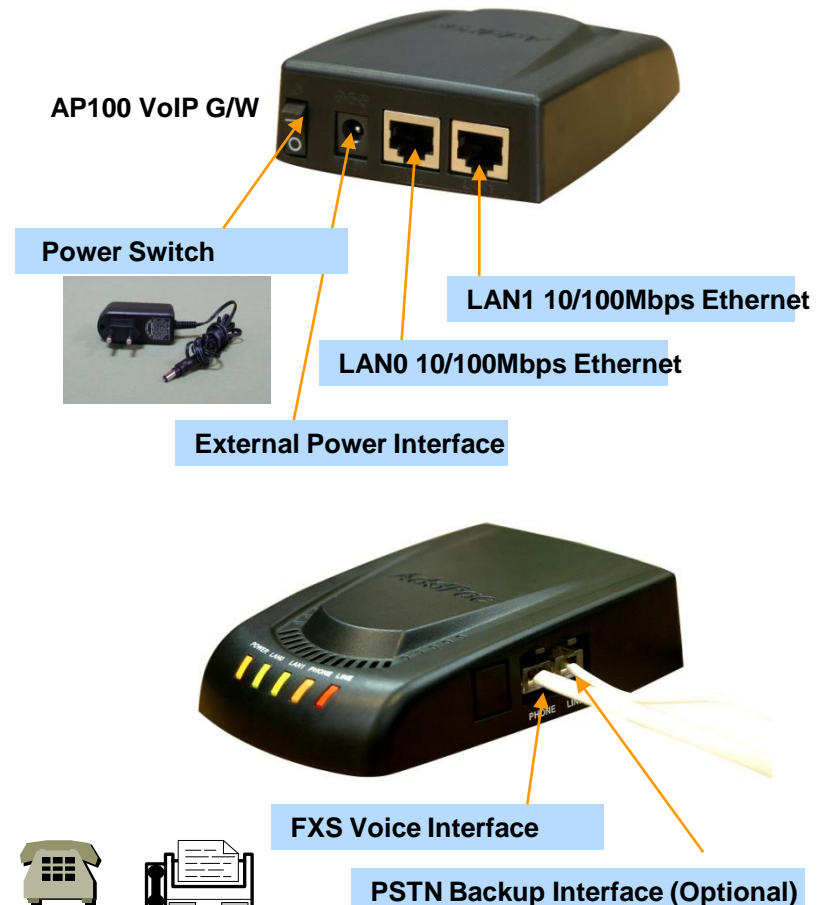
- **RISC Microprocessor Computing Power**
- **+ High End Programmable DSP**
- **VoIP FXS Port**
 - AP100 Model : One(1) FXS Port
- **Network Interface**
 - Two(2) 10/100Mbps Fast Ethernet (RJ45)
- **Power Supply**
 - External Power Adaptor (5V, 2A)
- **Power On/Off Switch**
- **Power LED, LAN LED, FXS Port LED**

Hardware Specification

Hardware Specifications

AP100 VoIP Series	Basic Specifications
CPU	32Bit RISC Microprocessor
Voice Interface	1-Ports FXS Voice Interface(RJ-11)
Ethernet Interface	2-Ports 10/100Mbps Ethernet Interface(RJ-45)
PSTN Backup Port (Optional)	1-Port PSTN Backup Port(RJ-11)
Flash Memory	2Mbyte High-speed Flash Memory
Base Memory	16Mbyte High-speed SDRAM
Power Requirement	External Power Supply Adaptor / VAC 110~220V, 50/60Hz, 10Watt
Operating Temperature	0°C ~ 45°C (32 °F ~ 122°F)
Storage Temperature	-40°C ~ 85°C (-40°C ~ 185°F)
Relative Humidity	5% ~ 95% (Non-condensing)
Dimensions	28.8mm x 77mm x 111mm (H x W x D)

Network interface Configurations



Thank you!

AddPac Technology Co., Ltd.
Sales and Marketing

Phone +82.2.568.3848 (KOREA)

FAX +82.2.568.3847 (KOREA)

E-mail sales@addpac.com