

Emergency Call IP Phone Call Center Solution



AP-EIP100



AP-EIP80



AP-EIP50

AddPac

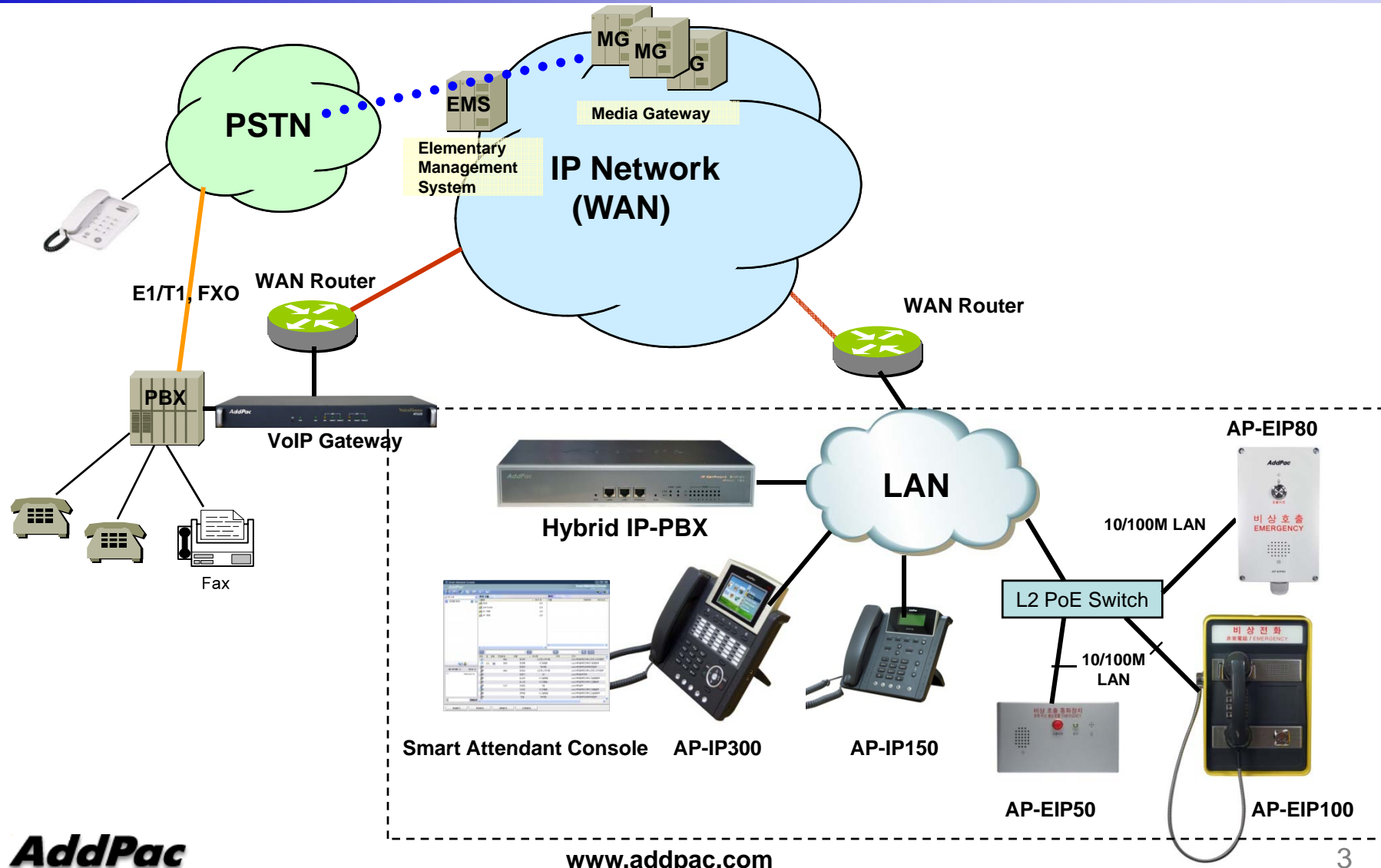
AddPac Technology

2010, Sales and Marketing


Contents

- Emergency Call IP Phone Service Diagram
- Emergency Call IP Phone Comparison Table
- Emergency Call IP Phone Series
 - AP-EIP100
 - AP-EIP80
 - AP-EIP50
- Hybrid IP-PBX Solution for Call Center
- IP Phone Solution for Call Center

Emergency Call IP Phone Service Diagram



Emergency Call IP Phone Comparison Table

Model	AP-EIP100	AP-EIP80	AP-EIP50
Service Features			
Duplex	Full Duplex	Full Duplex	Full Duplex
Key Pad	3x4 Key Support	N/A	N/A
Handset	Support	N/A	N/A
Voice Codec	G.711/G.726/ G.729/G.723	G.711/G.726/ G.729/G.723	G.711/G.726/ G.729/G.723
Signaling	H.323/SIP	H.323/SIP	H.323/SIP
Speaker Phone	Support	Support	Support
LAN Port	1	1	1
PoE(Optional)	Support	Support	Support
Application	Indoor	Outdoor(water proof)	Indoor



AP-EIP100 Emergency Call IP Phone

Main Features

AP-EIP100 Emergency Call IP Phone

Main Features

- High Performance Emergency Call IP Phone Solution
- Emergency Call Button & Speaker Phone
- 3x4 Key, Handset, Internal MIC & Speaker
- H.323/SIP Concurrent VoIP Signaling Stack Embedded
- High-performance Voice Codec Support
 - G.711/G.726/G.729/G.723, etc
- One(1) 10/100Mbps Fast Ethernet
- PoE(Power over Ethernet) Support
- High Quality Speaker Phone Features
- Powerful Acoustic Echo Canceller
- Powerful Network Protocols (PPPoE, DHCP, Static Routing, etc)
- Firmware Upgradeable Architecture
- NMS (Network Management System) for Large Scale Deployment
- Advanced Voice QoS Mechanism

Hardware Specification

AP-EIP100 Emergency Call IP Phone

RISC
CPU

High-end
DSP

- **RISC+DSP Microprocessor Computing Power (Dual Processor Architecture)**
- **Audio and Voice Interface**
 - Internal MIC
 - Internal Speaker
 - Hand Set, On/Off Hook
 - 3 x 4 keyPAD
- **Emergency Call Button**
- **Network Interface**
 - One(1) 10/100Mbps Fast Ethernet
- **Power Supply**
 - Power over Ethernet

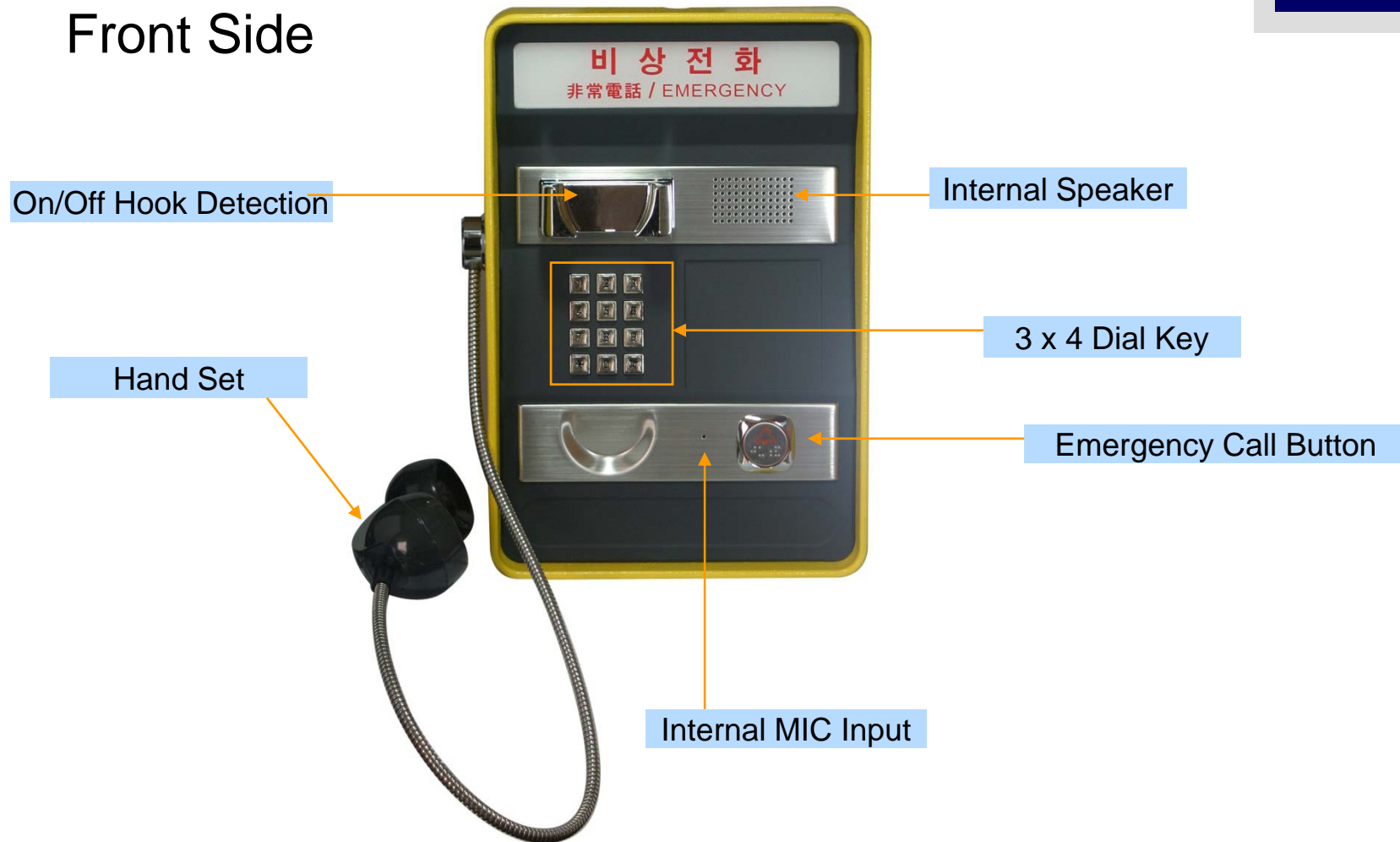
Hardware Specification

AP-EIP100 Emergency Call IP Phone

RISC
CPU

High-end
DSP

Front Side



Hardware Specification

AP-EIP100 Emergency Call IP Phone

RISC
CPU

High-end
DSP

Bottom Side



Outlet for LAN cable





AP-EIP80 Emergency Call IP Phone

Main Features

AP-EIP80 Emergency Call IP Phone

Main Features

- Emergency IP Phone Solution for Outdoor Application
- Emergency Call Button & Speaker Phone
- Water Proof Function Support
- H.323/SIP Concurrent VoIP Signaling Stack Embedded
- High-performance Voice Codec Support
 - G.711/G.726/G.729/G.723, etc
- One(1) 10/100Mbps Fast Ethernet
- PoE(Power over Ethernet) Support
- High Quality Speaker Phone Features
- Powerful Acoustic Echo Canceller
- Powerful Network Protocols (PPPoE, DHCP, Static Routing, etc)
- Firmware Upgradeable Architecture
- NMS (Network Management System) for Large Scale Deployment
- Advanced Voice QoS Mechanism

Hardware Specification

AP-EIP80 Emergency Call IP Phone

RISC
CPU

High-end
DSP

- **RISC+DSP Microprocessor Computing Power (Dual Processor Architecture)**
- **Audio and Voice Interface**
 - Internal MIC
 - Internal Speaker
- **Emergency Call Button & LAMP**
- **Network Interface**
 - One(1) 10/100Mbps Fast Ethernet
- **Power Supply**
 - Power over Ethernet

Hardware Specification

AP-EIP80 Emergency Call IP Phone

RISC
CPU

High-end
DSP

Front Side



Internal MIC Input

Emergency Call Button with LED

Internal Speaker

Stainless Steel Cover for Water Protect



LAN Cable Inlet for water Proof



AP-EIP50 Emergency Call IP Phone

Main Features

AP-EIP50 Emergency Call IP Phone

Main Features

- Emergency IP Phone Solution
- Emergency Call Button & Speaker Phone
- H.323/SIP Concurrent VoIP Signaling Stack Embedded
- High-performance Voice Codec Support
 - G.711/G.726/G.729/G.723, etc
- One(1) 10/100Mbps Fast Ethernet
- PoE(Power over Ethernet) Support
- High Quality Speaker Phone Features
- Powerful Acoustic Echo Canceller
- Powerful Network Protocols (PPPoE, DHCP, Static Routing, etc)
- Firmware Upgradeable Architecture
- NMS (Network Management System) for Large Scale Deployment
- Advanced Voice QoS Mechanism

Hardware Specification

AP-EIP50 Emergency Call IP Phone

RISC
CPU

High-end
DSP

- **RISC+DSP Microprocessor Computing Power (Dual Processor Architecture)**
- **Audio and Voice Interface**
 - Internal MIC
 - Internal Speaker
- **Emergency Call Button & LAMP**
- **Network Interface**
 - One(1) 10/100Mbps Fast Ethernet
- **Power Supply**
 - Power over Ethernet

Hardware Specification

AP-EIP50 Emergency Call IP Phone

RISC
CPU

High-end
DSP

Hardware Specifications

AP-EIP50 IP Phone	Basic Specifications
CPU	RISC+ DSP Microprocessor
Ethernet Interface	1-Ports 10/100Mbps Ethernet Interface(RJ-45)
Flash Memory	4Mbyte High-speed Flash Memory
Base Memory	16Mbyte High-speed SDRAM
Power Requirement	Power over Ethernet
Operating Temperature	0°C ~ 45°C (32 °F ~ 122°F)
Storage Temperature	-40°C ~ 85°C (-40°C ~ 185°F)
Relative Humidity	5% ~ 95% (Non-condensing)
Dimensions	200mm x 115mm x 34mm (W x H x D)
Weight (g)	0.85Kg



Front Side

Internal MIC Input

Emergency Call Button

Internal Speaker

Bottom Side

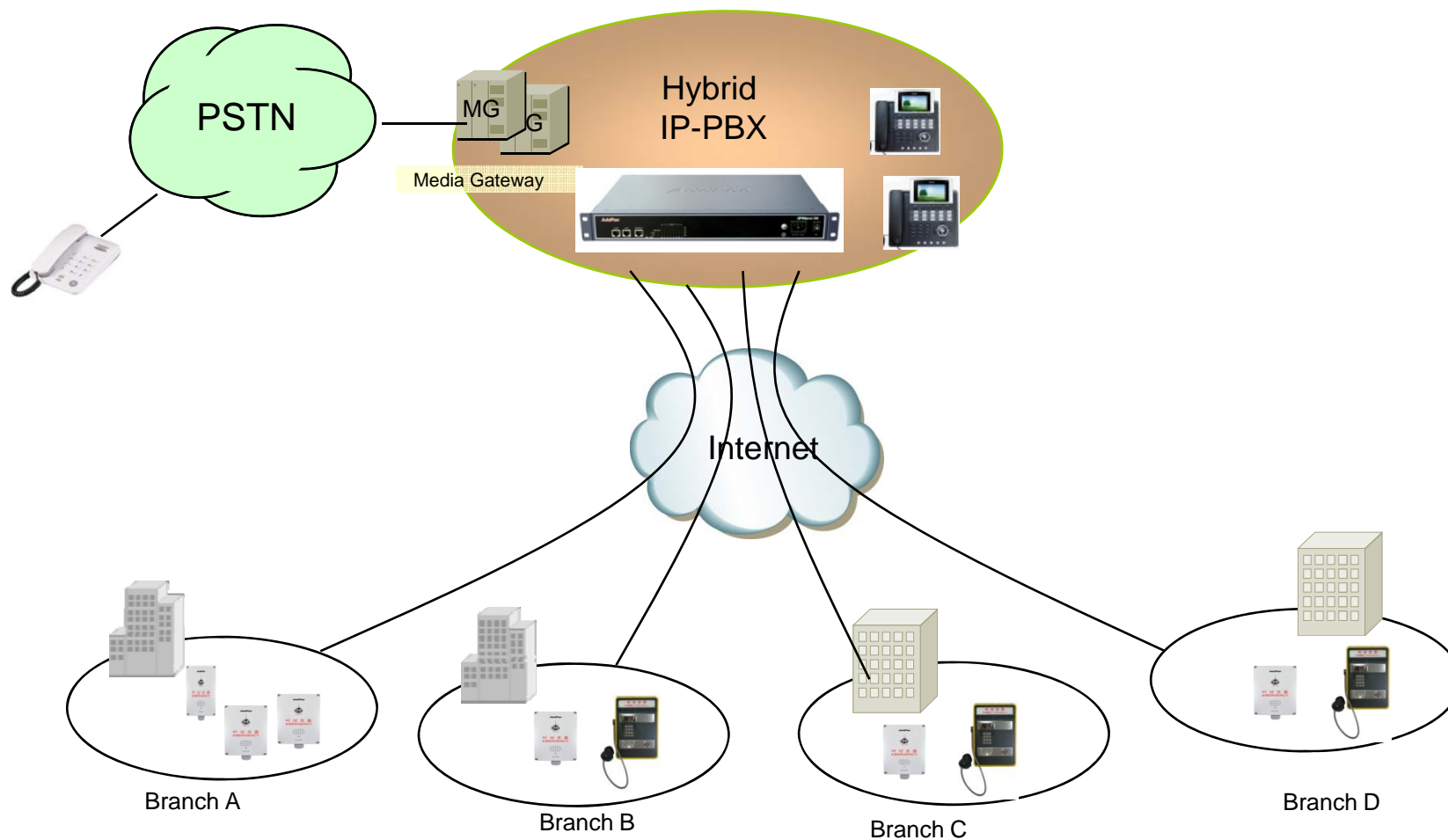


Outlet for LAN cable







Hybrid IP-PBX Solution for Call Center

Network Diagram









IPNext SMB IP-PBX Comparison Table

Model		IPNext190	IPNext187	IPNext185	IPNext180
Service Features					
Registration User Number		150	150	240	100
Concurrent Call User Number		50	50	120 (Up to 4E1)	30
IPv4/IPv6 Dual Stack Support		Support	Support	Support	Support
VoIP Signaling	Internal	SIP	SIP	SIP	SIP
	External	H.323/SIP	H.323/SIP	H.323/SIP	H.323/SIP
Powerful IVR, UMS, Media Service, User Presence Service		Support	Support	Support	Support
RTP Proxy Service (IPv6, Private IP)		Support	Support	Support	Support
LAN Port		2	2	2	2
VoIP Module Slots for PSTN		4 Slots (8 Port Module)	3 Slots (8 Port Module)	2 Slots (8 Port Module)	2 Slots (8 Port Module)
VoIP Interface		FXS,FXO,E1/T1	FXS,FXO,E1/T1	FXS,FXO,E1/T1	FXS,FXO,E1/T1



IP Phone Solution for Call Center

IP Phone Comparison Table

	AP-IP300 	AP-IP250 	AP-IP230 	AP-IP160 	AP-IP120 	AP-IP90 
LCD Size	4.3 Inch Color LCD	4.3 Inch Color LCD	5 Inch Color LCD	4 Text Line Graphic LCD	4 Text Line Graphic LCD	4 Text Line Graphic LCD
Touch Screen	N/A	Support	Support	N/A	N/A	N/A
Speed-Dial Keys	25 Key with Presence LED	Touch Screen based 25 Keys	Touch Screen based 25 Keys	16 Key with Presence LED	12 Key with Presence LED	N/A
Voice Codec	G.711/G.726/ G.729/G.723	G.711/G.726/ G.729/G.723	G.711/G.726/ G.729/G.723	G.711/G.726/ G.729/G.723	G.711/G.726/ G.729/G.723	G.711/G.726/ G.729/G.723
Signaling	H.323/SIP	H.323/SIP	H.323/SIP	H.323/SIP	H.323/SIP	H.323/SIP
3-Party Conversation	Support	Support	Support	Support	Support	Support
LAN Port	2	2	2	2	2	2
PoE(Optional)	Support	Support	Support	Support	Support	Support
FXO(Optional)	Support	Support	Support	Support	Support	Support

Emergency Call IP Phone Series

Thank you!

AddPac Technology Co., Ltd.
Sales and Marketing

Phone +82.2.568.3848 (KOREA)

FAX +82.2.568.3847 (KOREA)

E-mail : sales@addpac.com