

# Emergency Call IP Phone Call Center Solution



***AddPac***

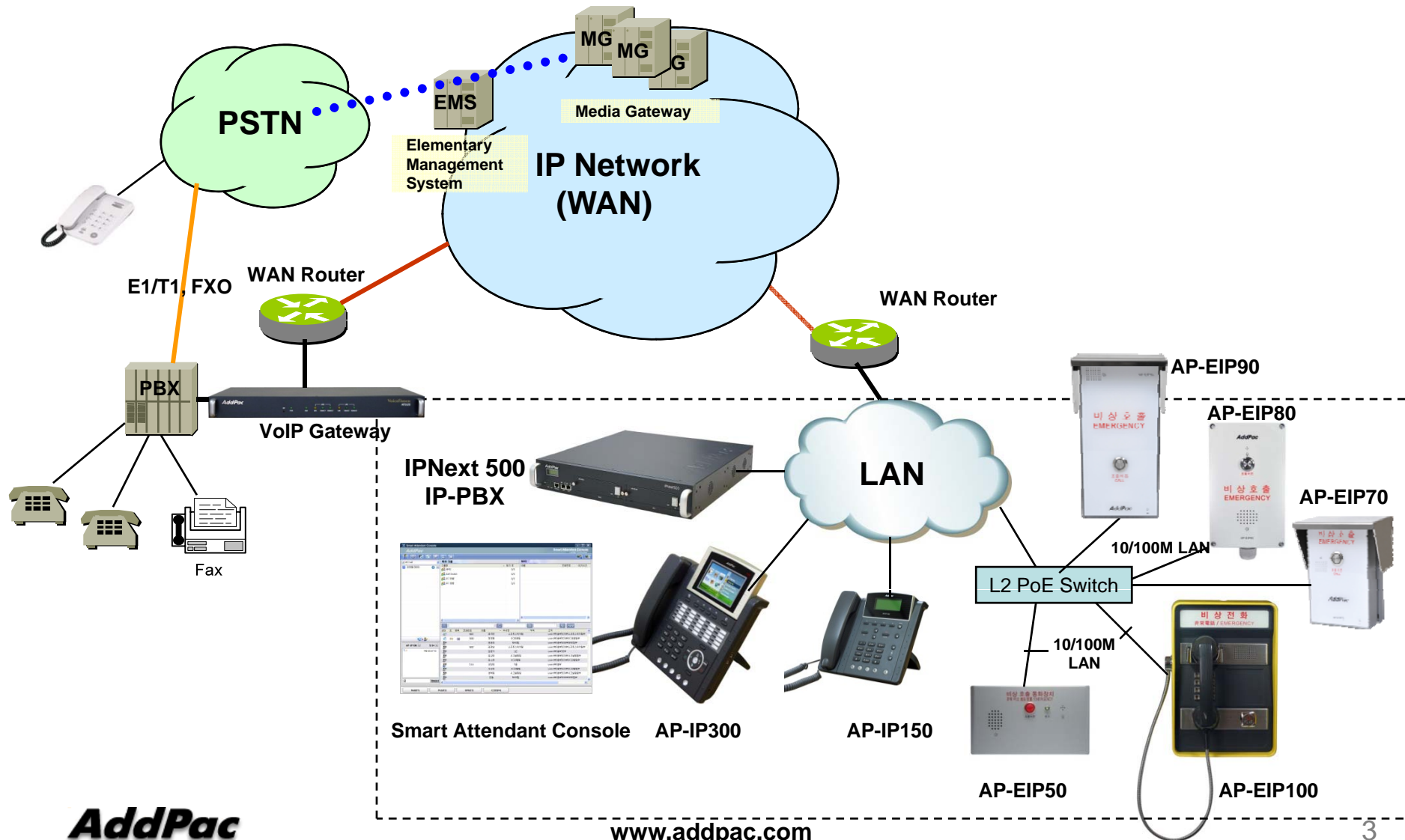
**AddPac Technology**

2014, Sales and Marketing






# Contents

- Emergency Call IP Phone Service Diagram
- Emergency Call IP Phone Comparison Table
  - AP-EIP100
  - AP-EIP90
  - AP-EIP80
  - AP-EIP70
  - AP-EIP50
- Hybrid IP-PBX Solution for Call Center
- IP Phone Solution for Call Center

# Emergency Call IP Phone Service Diagram



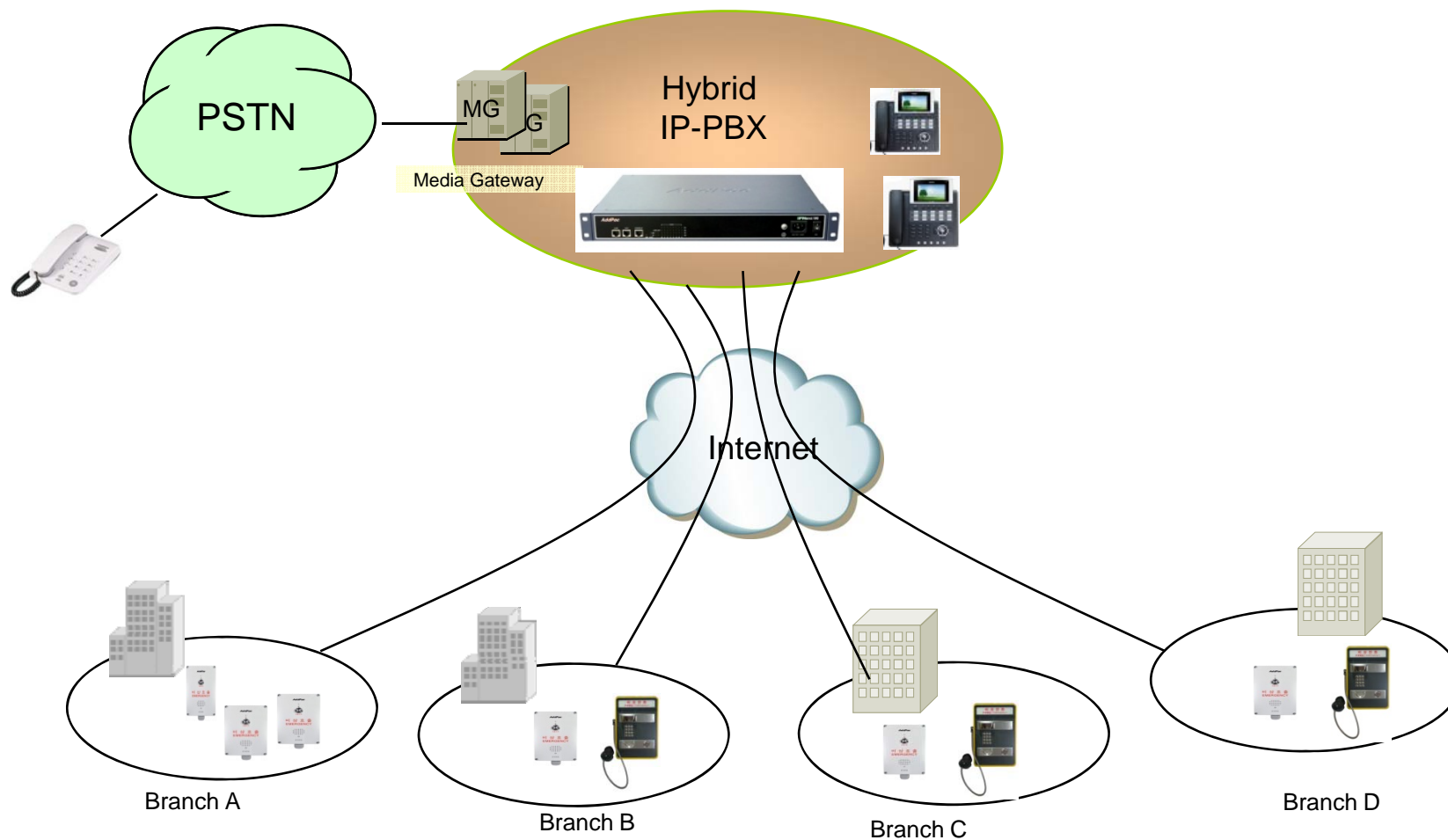
# Emergency Call IP Phone Comparison Table

Model	AP-EIP100	AP-EIP90	AP-EIP80	AP-EIP70	AP-EIP50
Service Features					
Duplex	Full Duplex	Full Duplex	Full Duplex	Full Duplex	Full Duplex
Key Pad	3x4 Key Support	N/A	N/A	N/A	N/A
Handset	Support	N/A	N/A	N/A	N/A
Voice Codec	G.711/G.726/ G.729/G.723	G.711/G.726/ G.729/G.723	G.711/G.726/ G.729/G.723	G.711/G.726/ G.729/G.723	G.711/G.726/ G.729/G.723
Signaling	H.323/SIP	H.323/SIP	H.323/SIP	H.323/SIP	H.323/SIP
Speaker Phone	Support	Support	Support	Support	Support
LAN Port	1	1	1	1	1
PoE(Optional)	Support	Support	Support	Support	Support
Application	Indoor	Outdoor(water proof)	Outdoor(water proof)	Outdoor(water proof)	Indoor







# Hybrid IP-PBX Solution for Call Center

# Network Diagram



# IPNext SMB IP-PBX Comparison Table







Model		IPNext190	IPNext187	IPNext185	IPNext180
<b>Service Features</b>					
Registration User Number		150	150	240	100
Concurrent Call User Number		50	50	120 (Up to 4E1)	30
IPv4/IPv6 Dual Stack Support		Support	Support	Support	Support
VoIP Signaling	Internal	SIP	SIP	SIP	SIP
	External	H.323/SIP	H.323/SIP	H.323/SIP	H.323/SIP
Powerful IVR, UMS, Media Service, User Presence Service		Support	Support	Support	Support
RTP Proxy Service (IPv6, Private IP)		Support	Support	Support	Support
LAN Port		2	2	2	2
VoIP Module Slots for PSTN		4 Slots (8 Port Module)	3 Slots (8 Port Module)	2 Slots (8 Port Module)	2 Slots (8 Port Module)
VoIP Interface		FXS,FXO,E1/T1	FXS,FXO,E1/T1	FXS,FXO,E1/T1	FXS,FXO,E1/T1



# IP Phone Solution for Call Center



# IP Phone Comparison Table

	AP-IP300 	AP-IP250 	AP-IP230 	AP-IP160 	AP-IP120 	AP-IP90 
LCD Size	4.3 Inch Color LCD	4.3 Inch Color LCD	5 Inch Color LCD	4 Text Line Graphic LCD	4 Text Line Graphic LCD	4 Text Line Graphic LCD
Touch Screen	N/A	Support	Support	N/A	N/A	N/A
Speed-Dial Keys	25 Key with Presence LED	Touch Screen based 25 Keys	Touch Screen based 25 Keys	16 Key with Presence LED	12 Key with Presence LED	N/A
Voice Codec	G.711/G.726/ G.729/G.723	G.711/G.726/ G.729/G.723	G.711/G.726/ G.729/G.723	G.711/G.726/ G.729/G.723	G.711/G.726/ G.729/G.723	G.711/G.726/ G.729/G.723
Signaling	H.323/SIP	H.323/SIP	H.323/SIP	H.323/SIP	H.323/SIP	H.323/SIP
3-Party Conversation	Support	Support	Support	Support	Support	Support
LAN Port	2	2	2	2	2	2
PoE(Optional)	Support	Support	Support	Support	Support	Support
FXO(Optional)	Support	Support	Support	Support	Support	Support

# Emergency Call IP Phone Series

# Thank you!

**AddPac Technology Co., Ltd.**  
Sales and Marketing

Phone +82.2.568.3848 (KOREA)

FAX +82.2.568.3847 (KOREA)

E-mail : sales@addpac.com