

AP-EIP100

Emergency Call IP Phone

High Performance Emergency Call IP Phone Solution



Multi-Terminal Ringing Service
using ACS(Access Control
Server) for Large-Scale
Deployment

AddPac

AddPac Technology

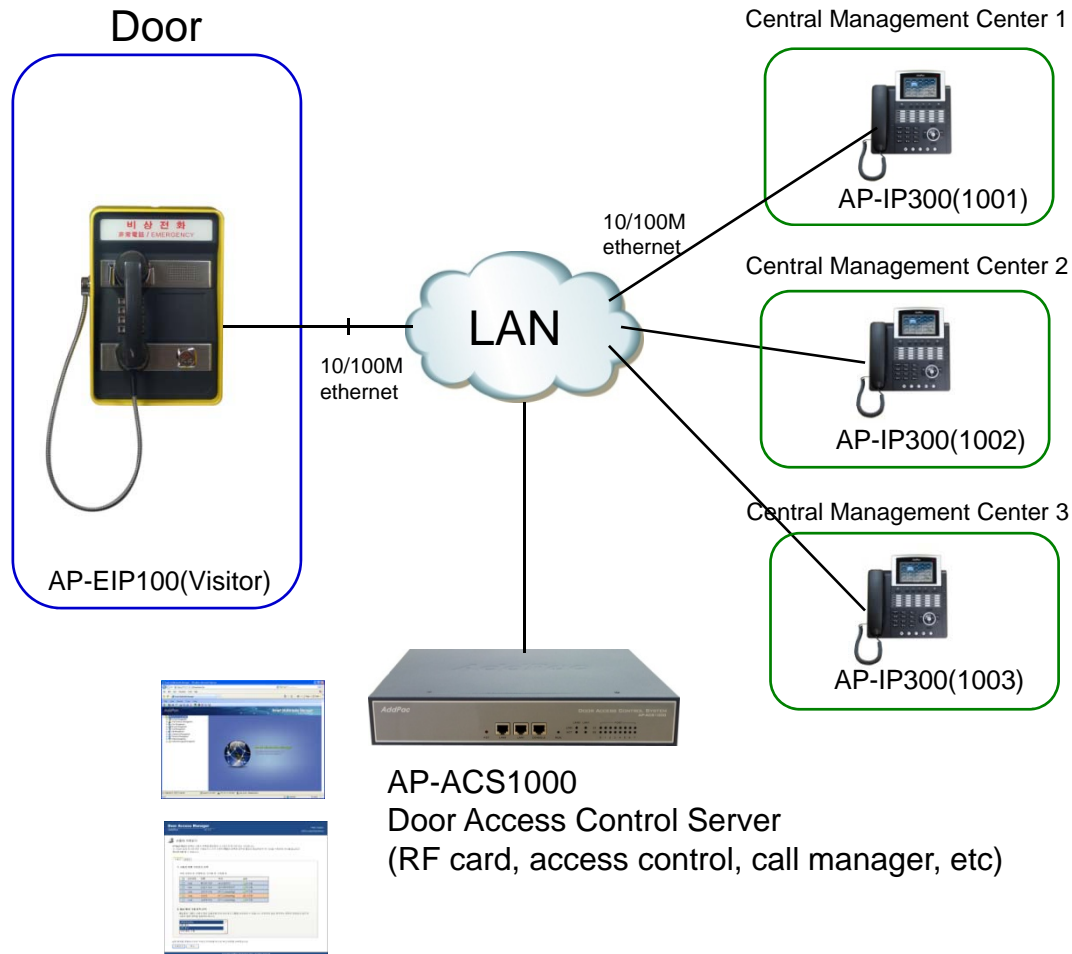
Sales and Marketing

Contents

- Multi-Terminal Ringing Service Network Diagram
- Signaling Flow
- Large-Scale Multi-Terminal Ringing Service Network Diagram



Multi-Terminal Ringing Network Service Diagram (single ACS)



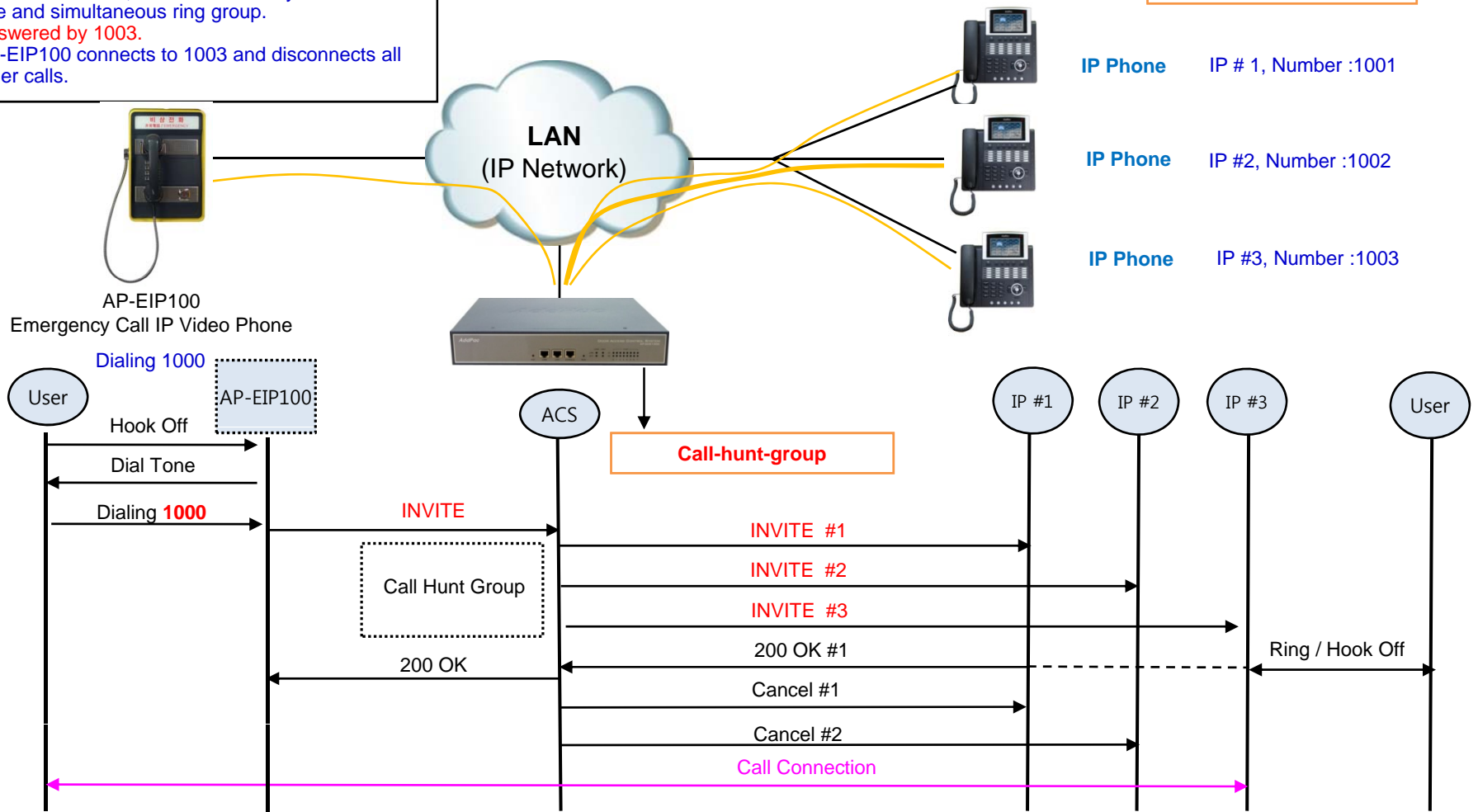
Benefits are

- When main secretary is busy or in absence, the others can response to the visitor's call.
- This service extends to WAN, Mobile or PSTN via VoIP Service Provider.

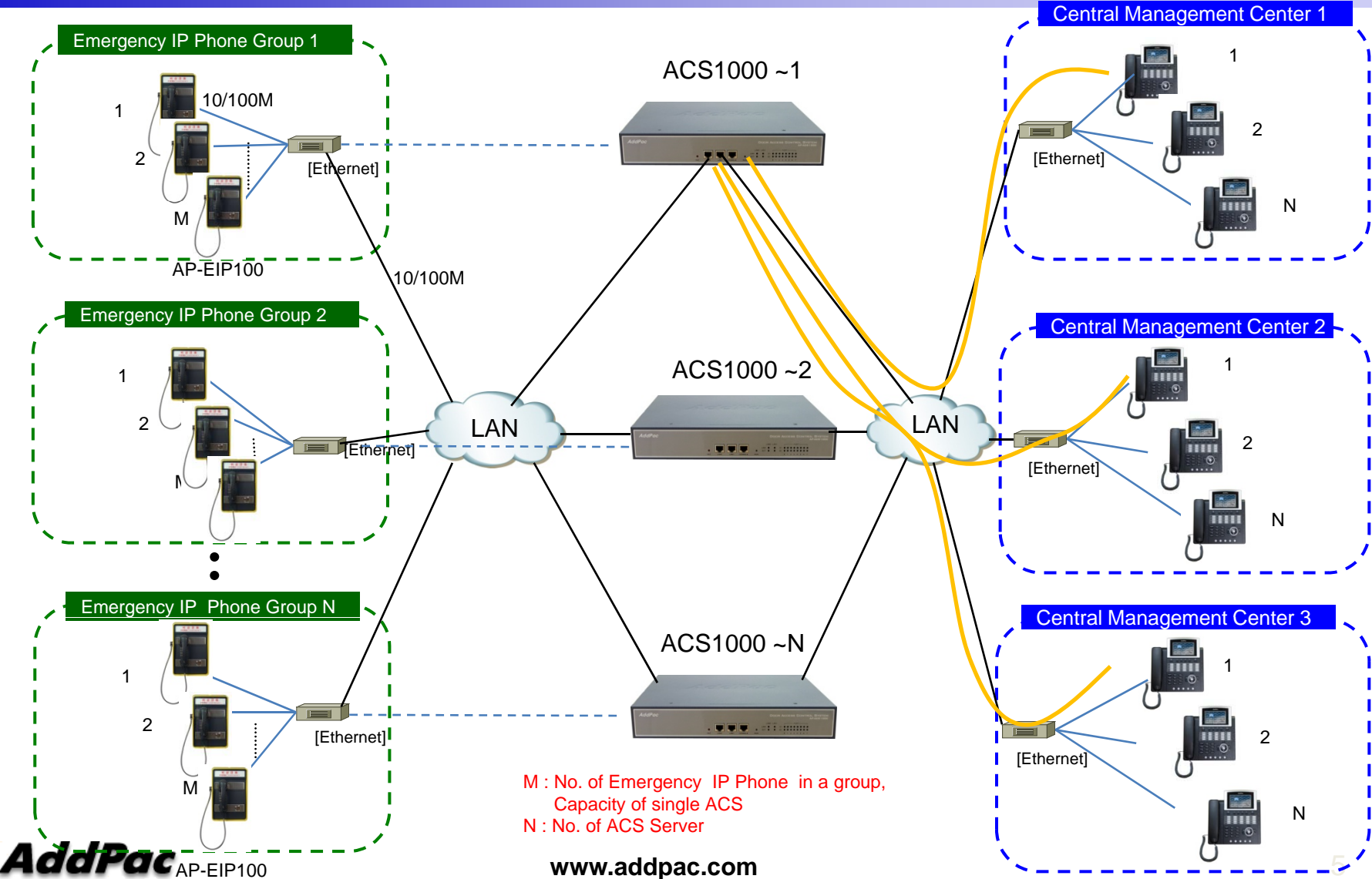
Signaling Flow (Emergency Call IP Phone to ACS to IP Phones)

Simultaneous Ring Scenario Example

1. A Visitor call to '1000'
2. ACS call to 1001, 1002 and 1003 by translation rule and simultaneous ring group.
3. Answered by 1003.
4. AP-EIP100 connects to 1003 and disconnects all other calls.



Large Scale Network Diagram (Multiple ACS Environment)





Thank you!

AddPac Technology Co., Ltd.
Sales and Marketing

Phone +82.2.568.3848 (KOREA)

FAX +82.2.568.3847 (KOREA)

E-mail sales@addpac.com