



AP-SH70

WiFi ZWave Smart Hub

High Performance Smart Home Solution for ZWave Sensors
(LAN, WiFi Both Support)



AddPac

AddPac Technology

Sales and Marketing

www.addpac.com

Contents

- Product Overview
- Hardware Specification
- APOS Technology
- Network Protocols
- Network Management
- Security Management
- Application Service
- Ordering Information

Product Overview

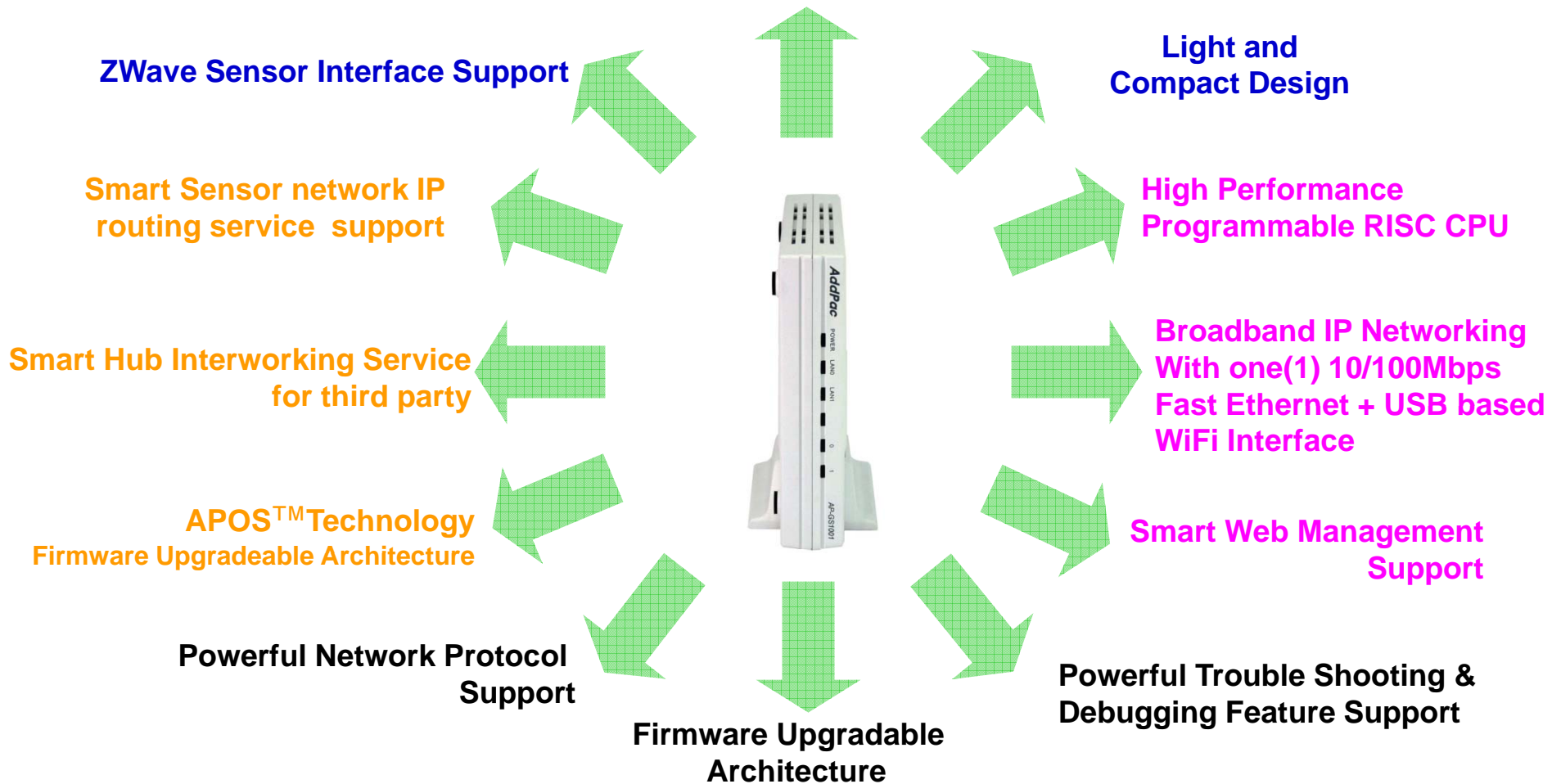
AP-SH70 WiFi ZWave Smart Hub

- Advanced Smart Home Solution
- ZWave Sensor Interface Support
- Smart IP Routing Service Features for Sensor Network
- Smart Wall Pad Interworking Service Features
- Smart Hub Interworking Support for Third Party
- Light SIP Call Manager and RTSP Server & Client Features
- High Performance RISC Programmable Architecture
- One(1) 10/100Mbps Fast Ethernet
- One(1) USB Port for WiFi Interface
- High Performance LAN-to-Zwave Routing Capability
- Powerful Network Protocols (PPPoE, DHCP, Static Routing, etc)
- Firmware Upgradeable Architecture
- Smart Web based Management
- Smart Phone/Tab/PAD Application Software (Android, IOS)
- Light and Compact Design with External Power Supply

Product Highlights

AP-SH70 WiFi Zwave Smart Hub

Powerful Smart Hub for ZWave sensors

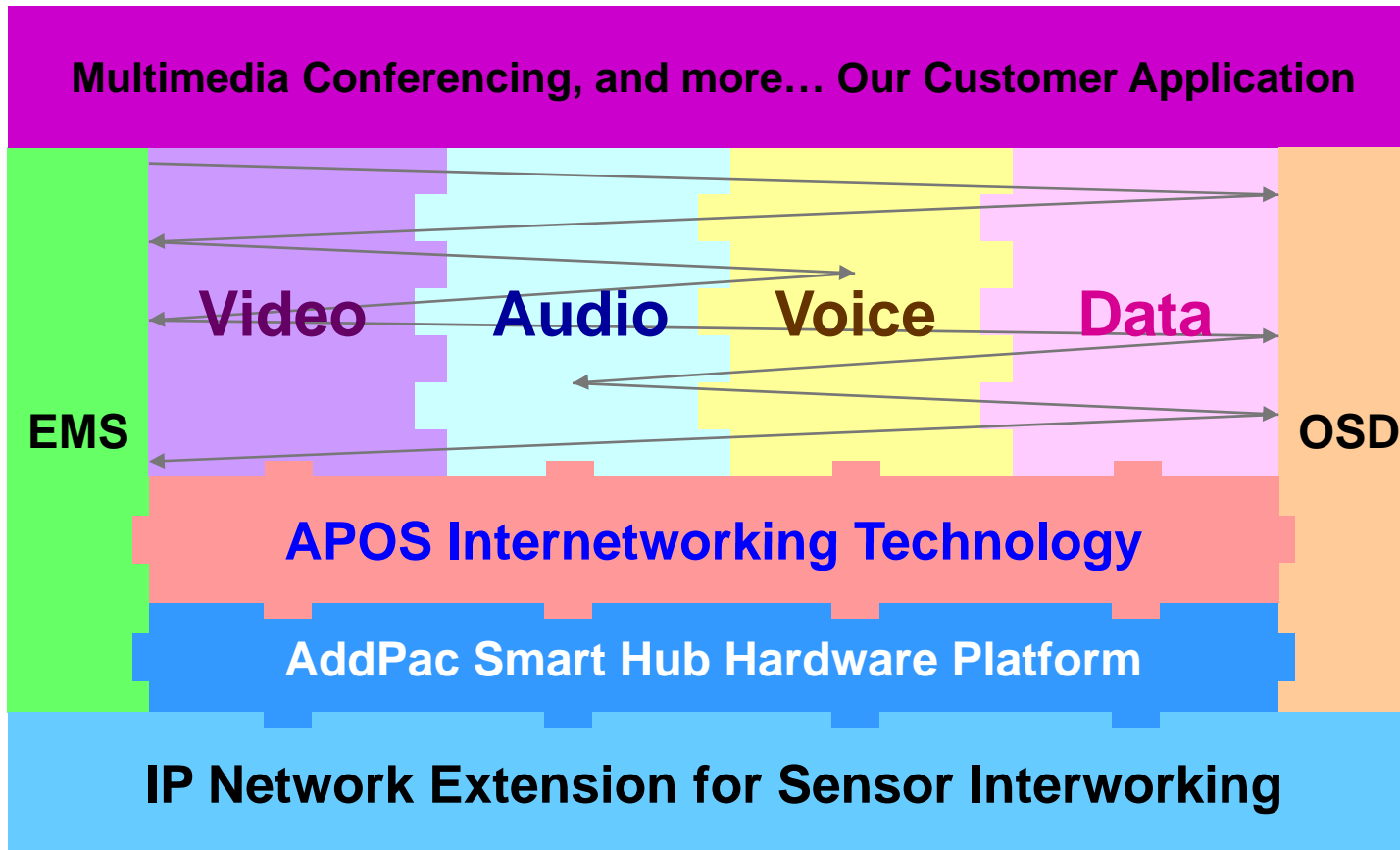


AddPac

www.addpac.com

APOS Technology

AP-SH70 WiFi ZWave Smart Hub



- APOS : AddPac Internetworking Operating System
- OSD : On- Screen Display
- EMS : Element Management System

Hardware Specification

AP-SH70 WiFi ZWave Smart Hub

RISC
CPU

- RISC Microprocessor Computing Power
- 1-Port Zwave Interface
- 1-Port Zwave Antenna
- Speaker & Beacon Port
- Network Interface
 - One(1) 10/100Mbps Fast Ethernet (RJ45)
- Run LED, LAN LED, Port LEDs
- External Power Supply

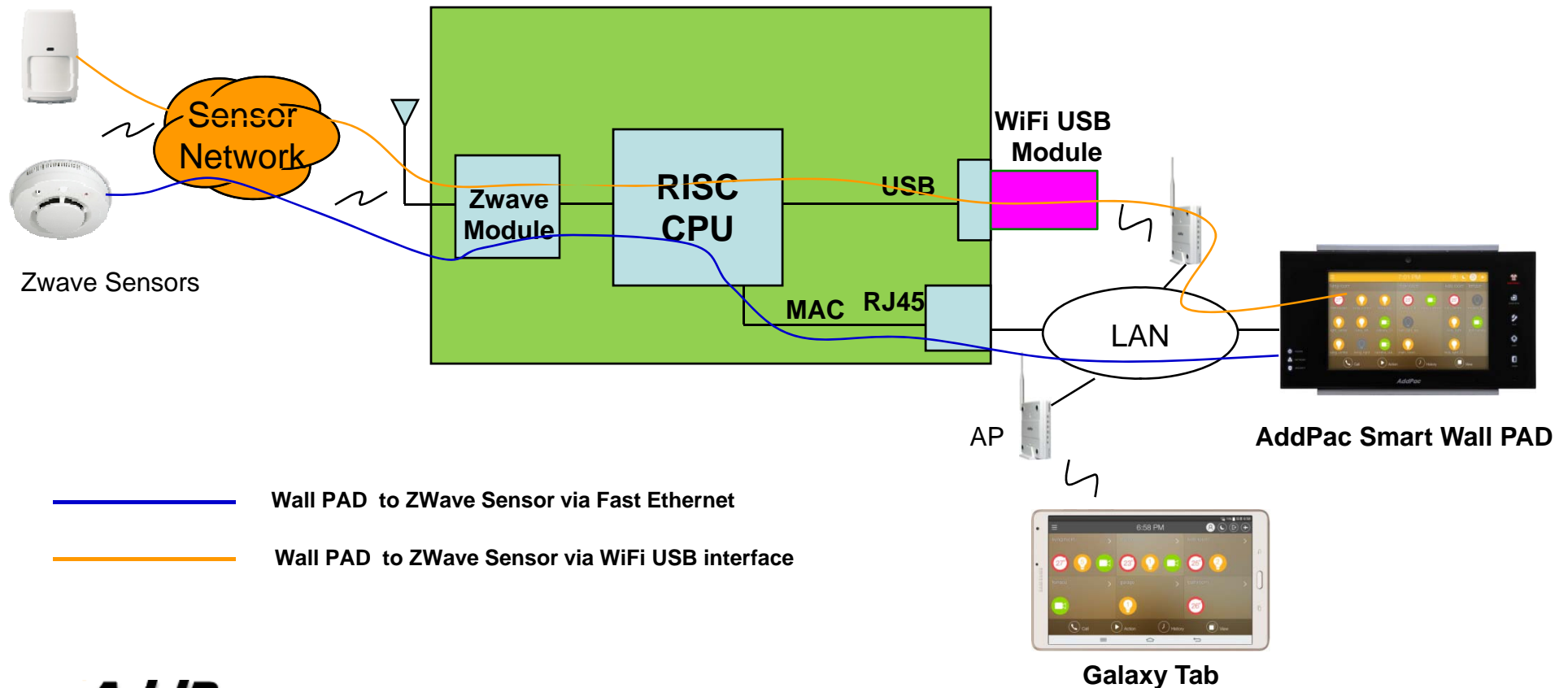
Hardware Specification

AP-SH70 WiFi ZWave Smart Hub

RISC
CPU

Smart Hub Service Diagram

AP-SH70 Smart Hub Internal H/W Block Diagram



Hardware Specification

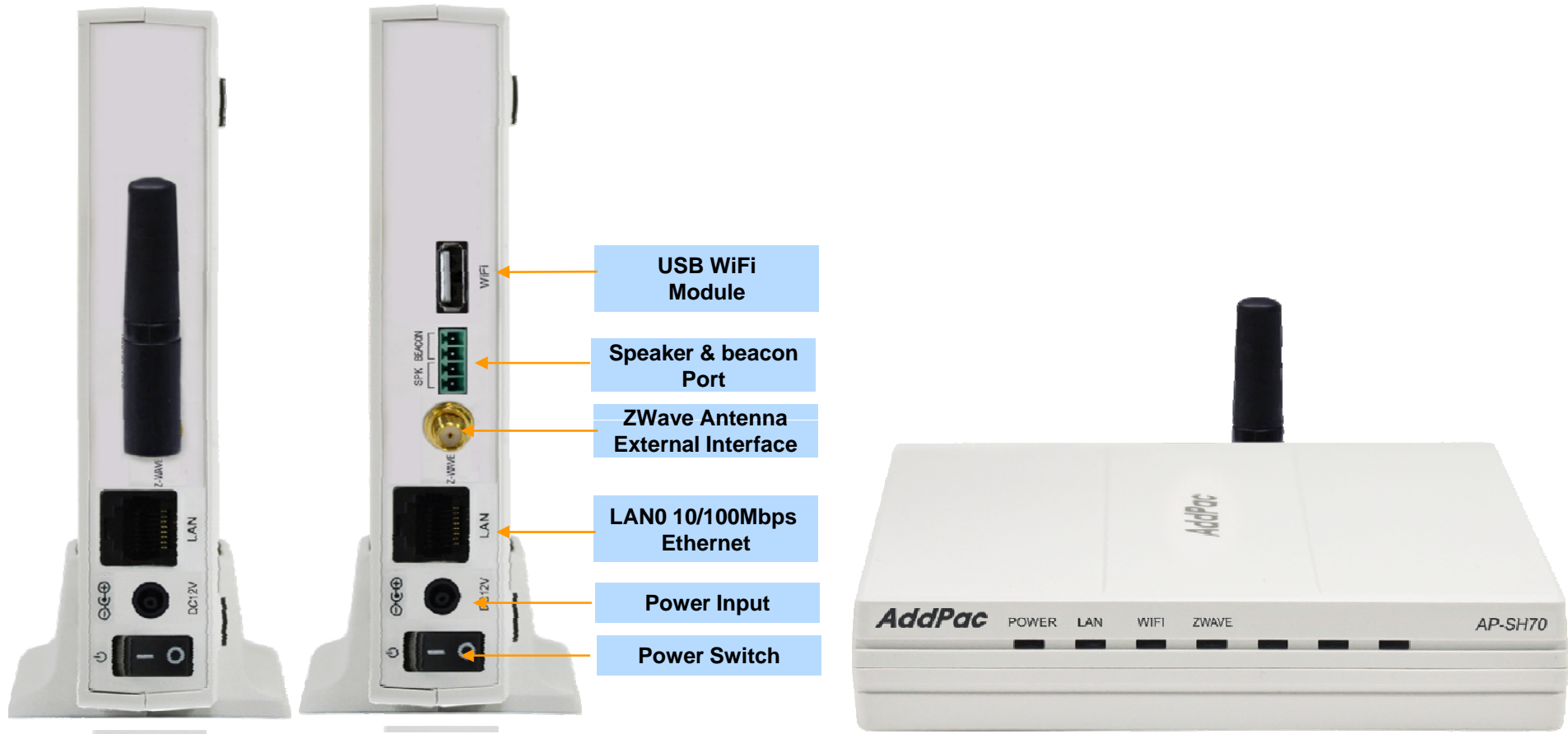
AP-SH70 WiFi ZWave Smart Hub

AP-SH70 Smart Hub	Basic Specifications
Sensor Interface	One(1)-Port Zwave Interface
Zwave Antenna Interface	External Zwave Antenna
LAN Interface	1-Port 10/100Mbps Ethernet Interface(1 x RJ-45)
	1-Port USB Interface for USB based WiFi Module
Flash Memory	4Mbyte High-speed Flash Memory
Base Memory	32Mbyte High-speed SDRAM
Power Requirement	Power Supply Adaptor / VAC 110~220V, 50/60Hz, 5V, 2A
Operating Temperature	0°C ~ 45°C (32 °F ~ 122°F)
Storage Temperature	-40°C ~ 85°C (-40°C ~ 185°F)
Relative Humidity	5% ~ 95% (Non-condensing)
Dimension	142mm x 142mm x 28mm (W x D x H)
Weight (Kg)	0.42Kg

Hardware Specification

AP-SH70 WiFi ZWave Smart Hub

Network interface Configurations



Network Protocols

AP-SH70 WiFi ZWave Smart Hub

Basic Network Protocols

- ARP, IPv4, TCP, UDP, ICMP, SCTP, IGMP, MLD

Routing Protocol

- IPv4 : Static

Service Protocol

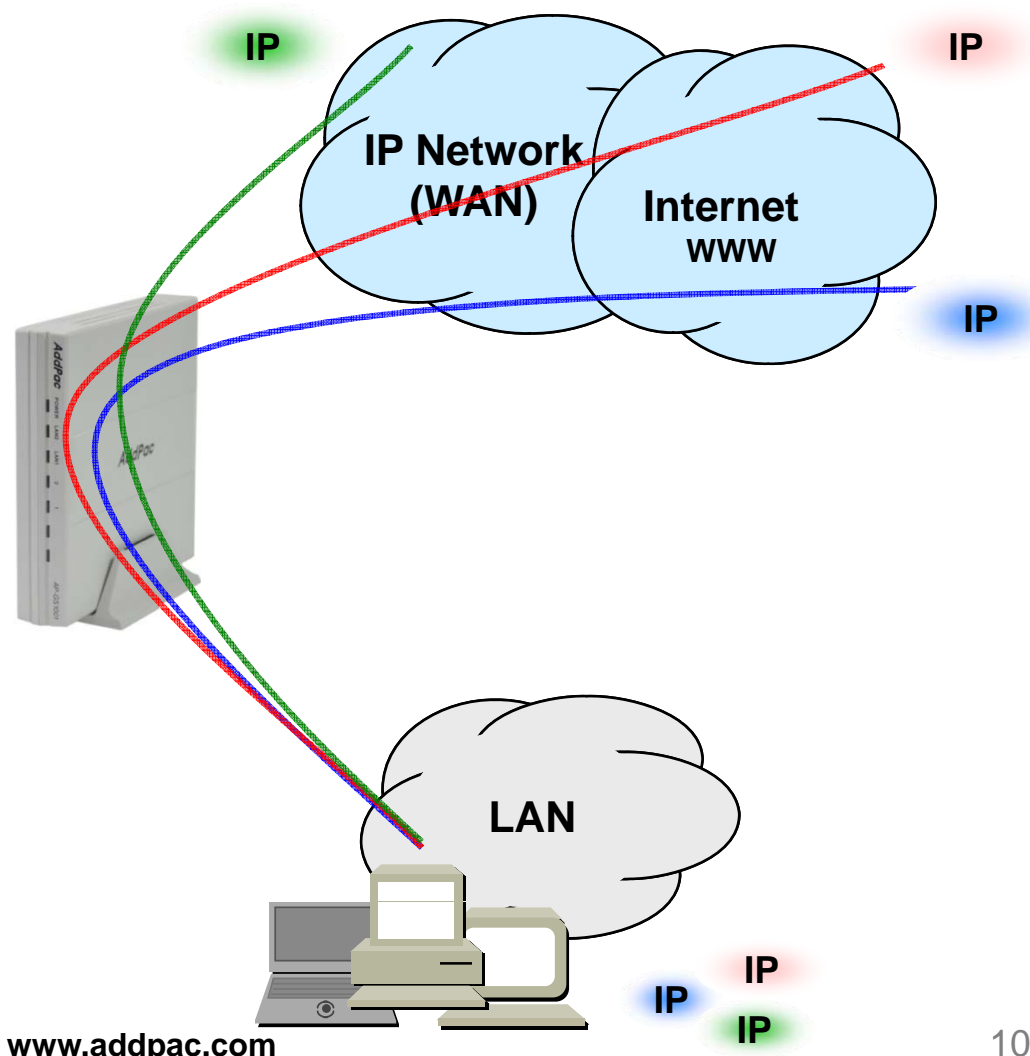
- FTP, Telnet, TFTP, DHCP Server/Relay, SNMP Server
- CDP (Cisco Discovery Protocol)
- DNS Resolver , DDNS(nsupdate)
- Bridge
- Syslog

IPv4 Address Configuration

- Fixed (Static)
- DHCP
- PPPoE

Miscellaneous

- Cisco Style CLI
- Standard & Extended IPv4 Access List
- Multi-level User Account Management
- IP accounting
- STUN Client

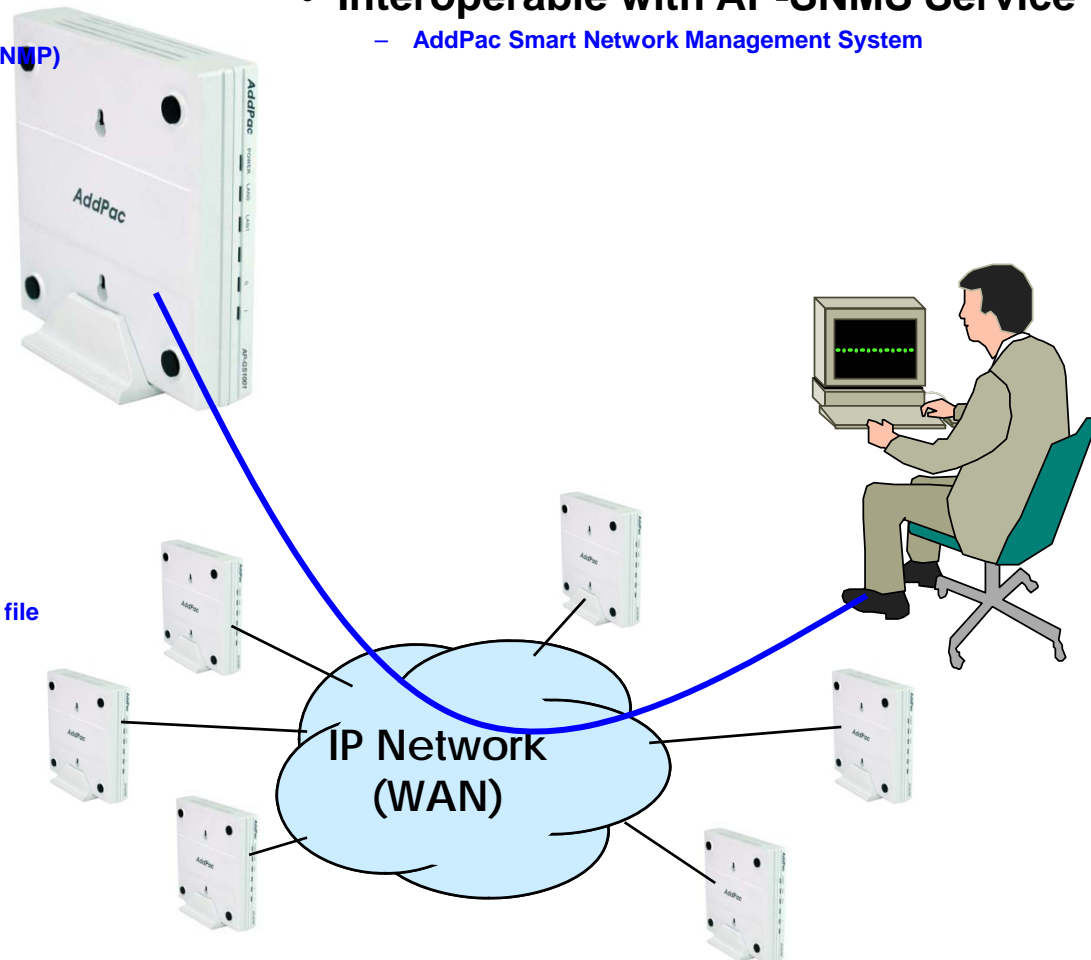


Network Management

AP-SH70 WiFi ZWave Smart Hub

- **SNMP**
 - Standard Simple Network Management Protocol(SNMP) Agent support
 - MIB v1 and v2 Support
- **Web-based Management**
 - Smart Easy Setup
 - Standard Voice Interface
 - Standard PSTN Back-up Interface
- **Watch-dog Function**
 - Hardware, Software watch-dog services
- **Remote Management**
 - Telnet
 - Rlogin
- **Auto Upgrade Service**
 - HTTP server based APOS image and configuration file auto-upgrade support
- **Batch Job Function**
 - Text based script downloading

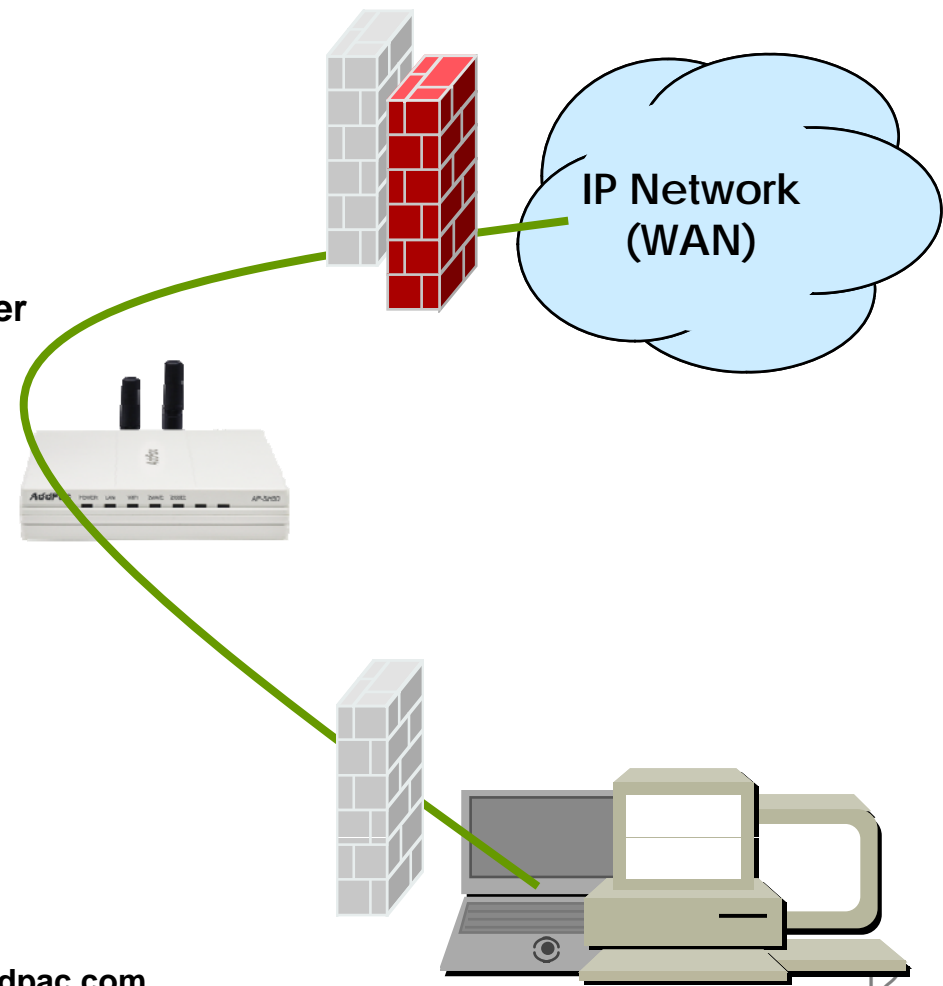
- **Interoperable with AP-SNMS Service**
 - AddPac Smart Network Management System



Security Management

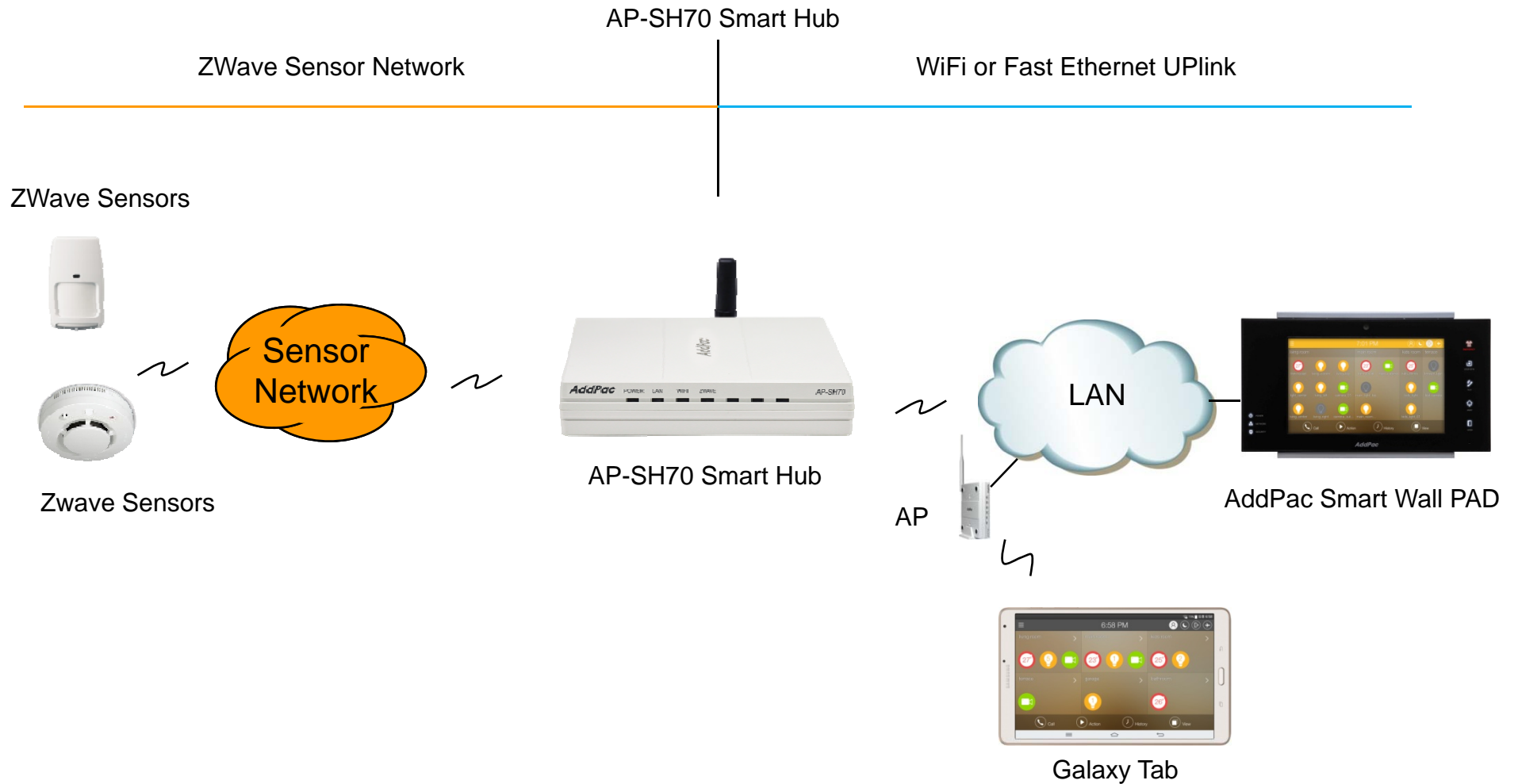
AP-SH70 WiFi ZWave Smart Hub

- IP packet filtering
- IP access list
- User authentication function
 - Password Authentication Protocol (PAP)
 - Challenge Handshake Authentication Protocol (CHAP)
- Enable/Disable specific protocols
- Auto-square connect of Telnet session
- Account Management function for multi-level user
- SNMP/TELNET/FTP/HTTP/TFTP port assignment function
- SNMP/TELNET/FTP access list management
- Boot mode security checking function



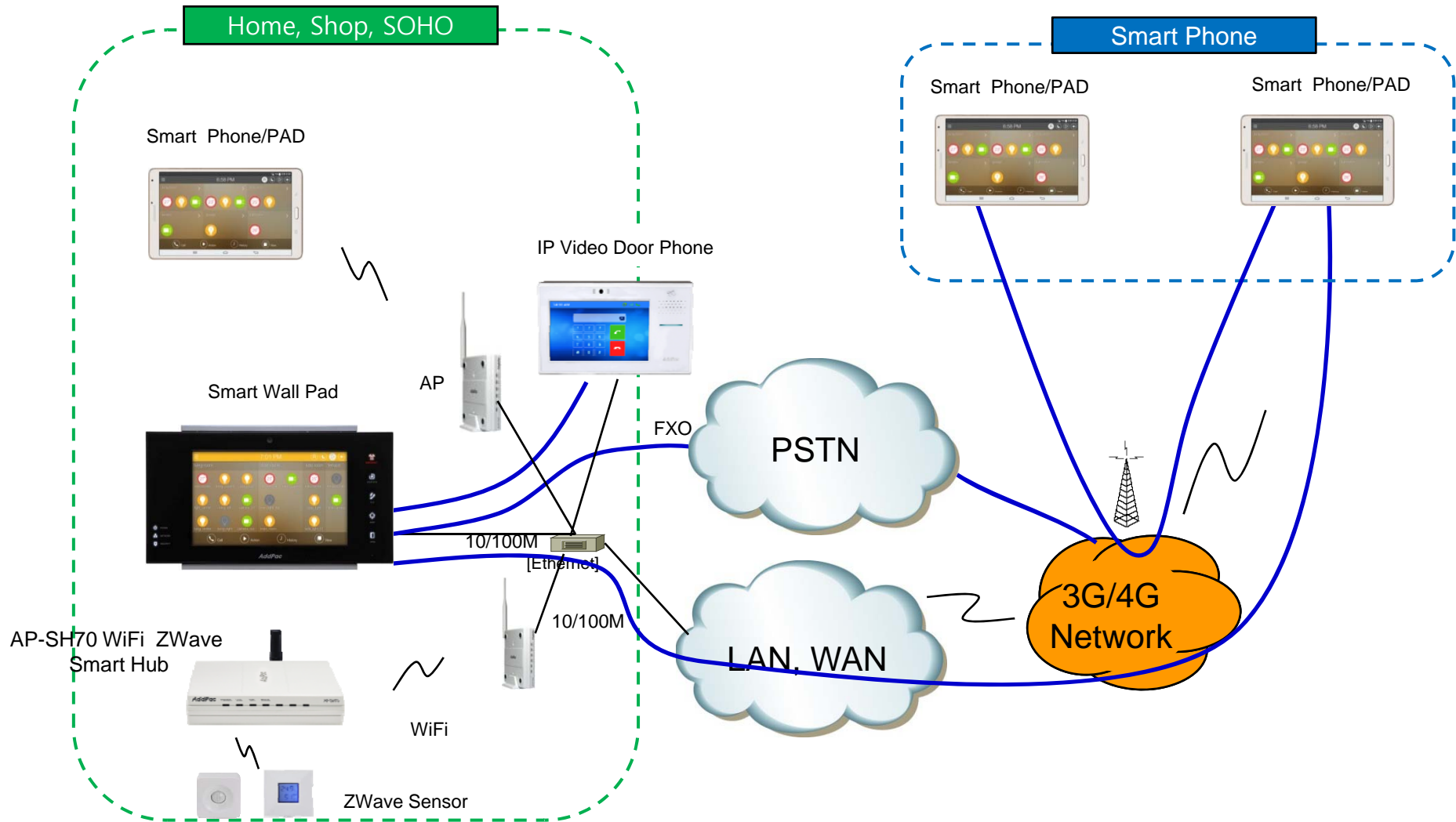
Standard Application

AP-SH70 WiFi ZWave Smart Hub



Standard Application

AP-SH70 WiFi ZWave Smart Hub



Ordering Information

- **AP-SH70 WiFi ZWave Smart Hub Hardware**
 - AP-SH70 WiFi ZWave Smart Hub Main Body
 - RISC Microprocessor
 - 1-Port ZWave Interface with external antenna
 - 1-Port 10/100Mbps Fast Ethernet(RJ45)
 - 1-Port USB for WiFi USB Module
 - Including Network Cable, Antenna & Ext. Power Supply, etc.
- **Built-in APOS Internetworking Software for AP-SH70**
- **Including 1 Year Hardware Warranty**
- **Product Documents**
 - Install and Operation Guide (PDF)
- **Pricing**
 - AddPac Technology Regional Sales Manager
 - Authorized Sales and Marketing Representatives
 - Please Contact www.addpac.com

Smart Hub Series

Thank you!

AddPac Technology Co., Ltd.
Sales and Marketing

Phone +82.2.568.3848 (KOREA)

FAX +82.2.568.3847 (KOREA)

E-mail sales@addpac.com