

# AP-VWP100

## Smart IP Video Wall PAD

High Performance IP Video Wall PAD Solution

IP Video Wall PAD Solution  
Advantage over Analog Solution



# **AddPac**

**AddPac Technology**

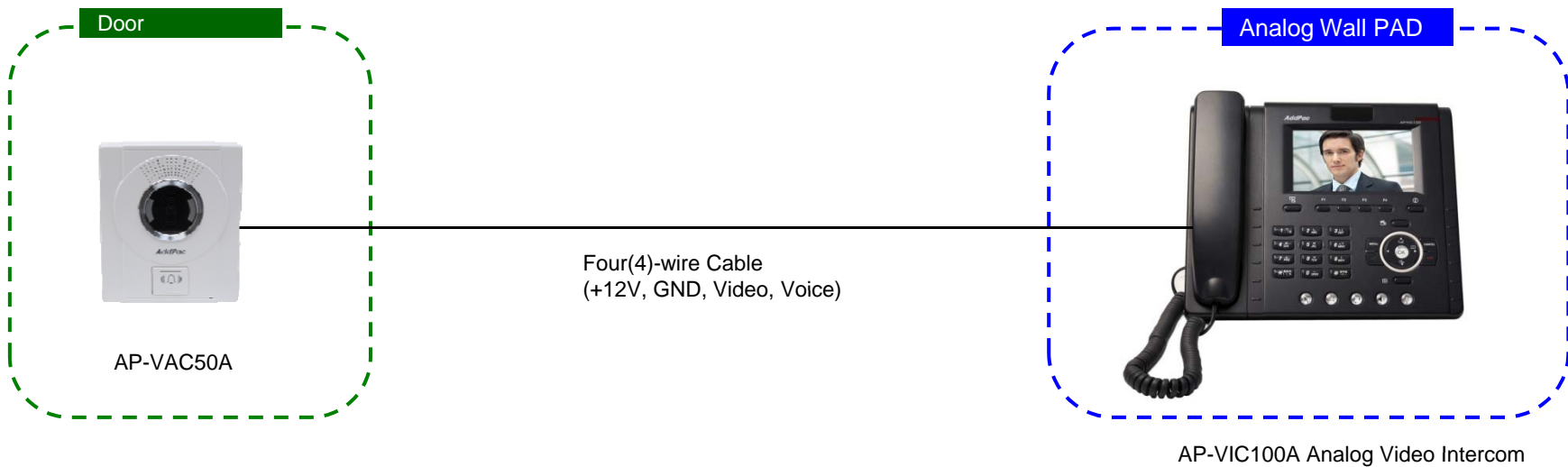
Sales and Marketing

[www.addpac.com](http://www.addpac.com)

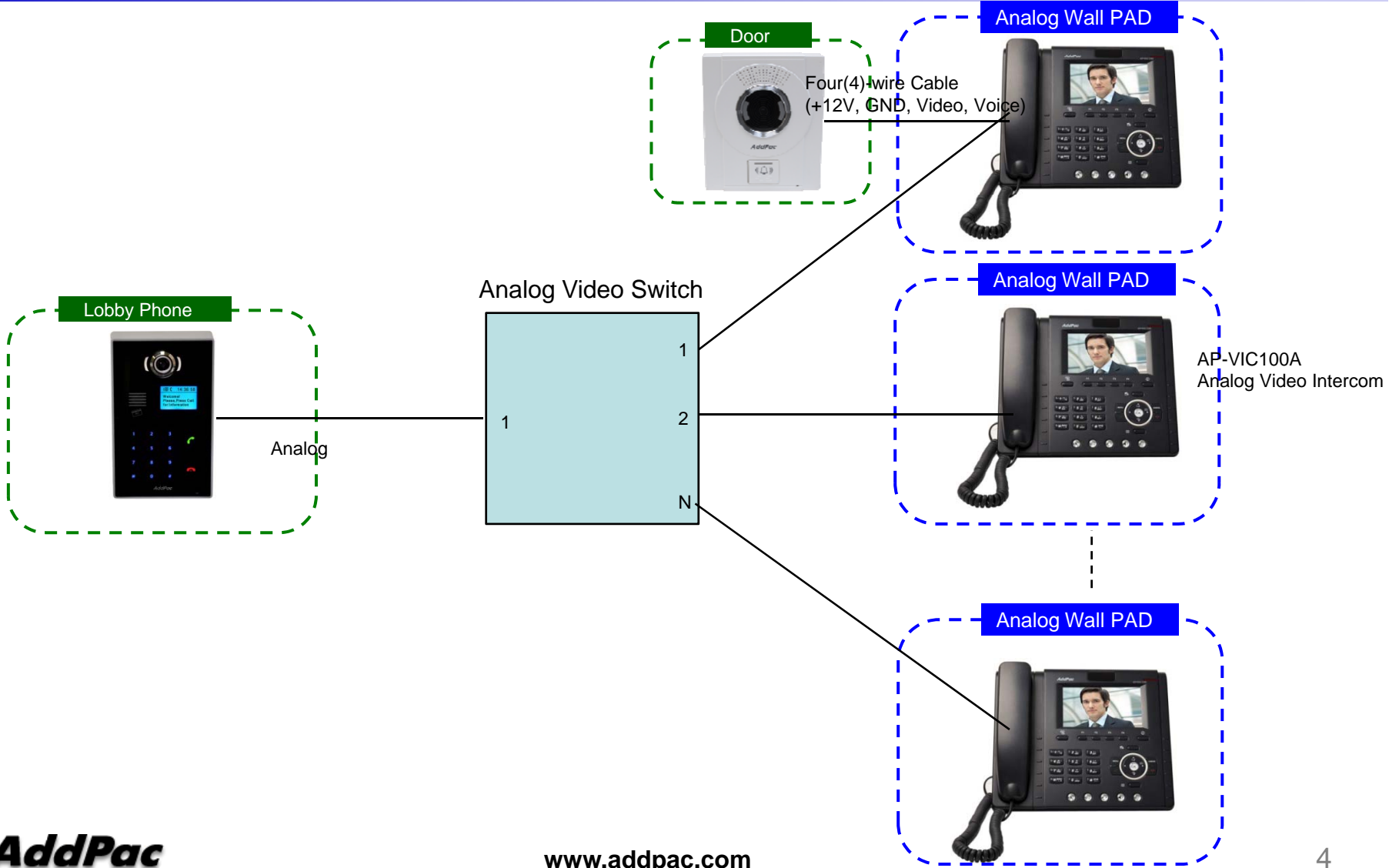
# Contents

- Network Diagram Comparison
  - Analog based Scheme
  - IP based Scheme
  - IP based Smart Home Network Diagram
- IP based Video Wall PAD Solution Advantage

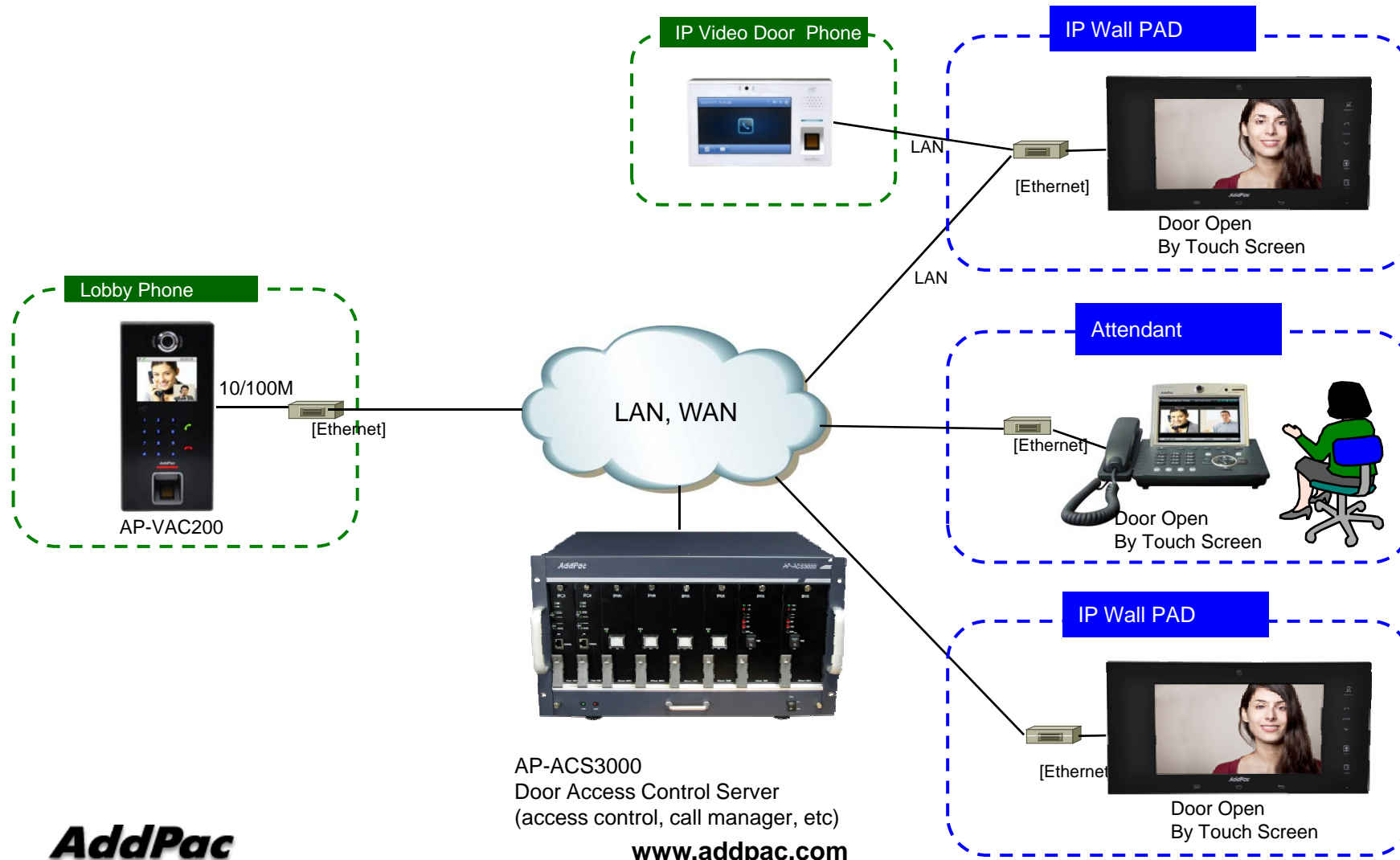
# Analog based Solution Network Diagram



# Analog based Solution Network Diagram

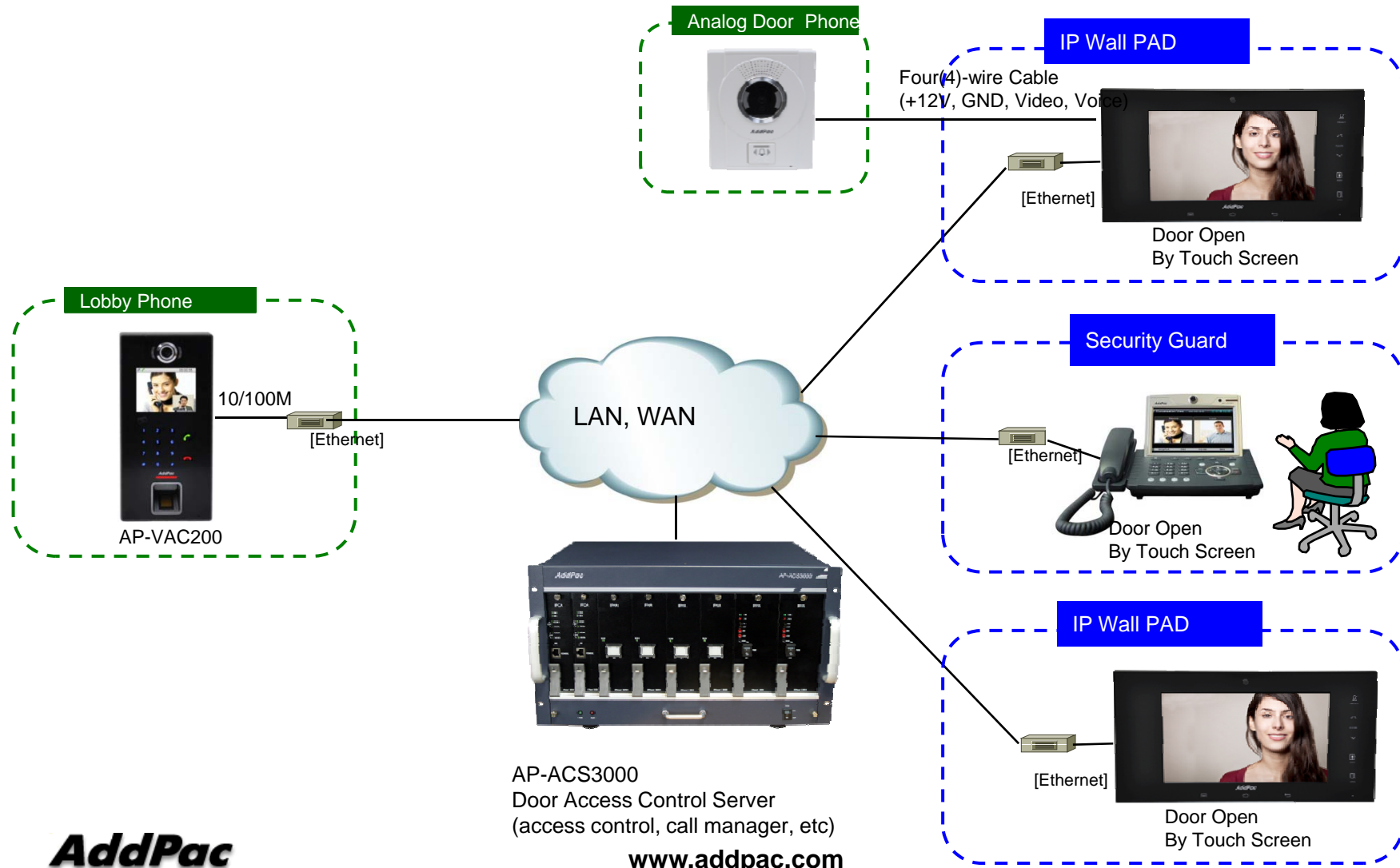


# IP based Solution Network Diagram (IP Video Door Phone)

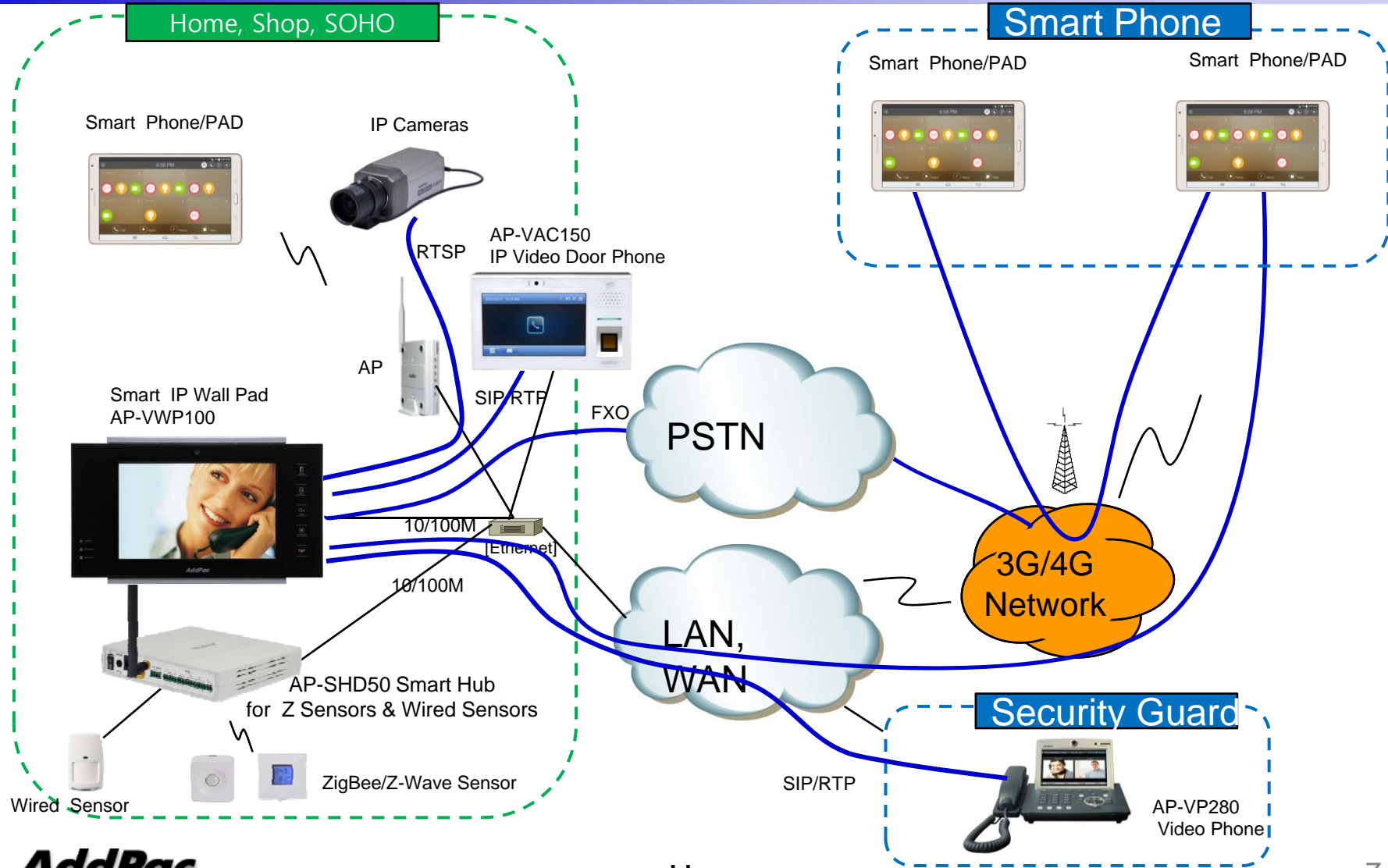


# IP based Solution Network Diagram

(Option : Analog Video Door Phone, Cost Effetive)



# IP based Smart Home Network Diagram



# Advantage over Analog based Scheme

- Cabling is Very Simple and Cost Effective
- No Need Full Mesh Line or N : N Video Switch
- Call Transfer, Call Hunting, etc Various Supplementary Service is Possible
- Various Smart Tablet, Phone Application interworking Software
- RTSP based IP Camera Monitoring Service is Possible
- For home monitoring, IP camera service is possible using optional camera interface
- Remote Video Call Log Monitoring Service
- High Scalability compare with Analog based Scheme
- Fault Tolerant Scheme like as Dual Redundancy is Possible
- Value Added Supplementary Service is Possible
- Interoperable between IP device is very simple and easy if standard protocol/codec is used





# Thank you!

**AddPac Technology Co., Ltd.**  
Sales and Marketing

Phone +82.2.568.3848 (KOREA)

FAX +82.2.568.3847 (KOREA)

E-mail [sales@addpac.com](mailto:sales@addpac.com)