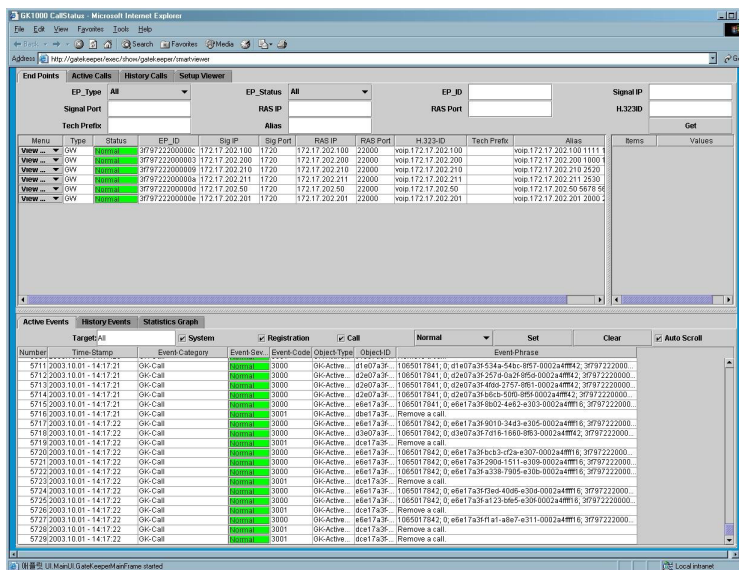


SmartViewer Installation Guide For VoiceFinder GateKeeper

Release 1.00



AddPac Technology Co., Ltd.

2/ 3F, Jeong-Am Bldg, Kangnam-Gu,

Seoul, Korea, Zip 135-080

Phone +82 2 568-3848

Fax +82 2 568-3847

E-mail : info@addpac.com

<http://www.addpac.com>

[Table of Contents]

Chapter 1. SmartViewer Overview	3
Introduction to SmartViewer for GateKeeper	3
Main Features.....	3
System Requirement for GateKeeper SmartViewer.....	4
Chapter 2. Access to SmartViewer	5
Java 2 Runtime Environment v1.4.2 Download	5
Java 2 Runtime Environment v1.4.2 Installation	9
Java 2 Runtime Environment Security Setting	12
GateKeeper SmartViewer Access.....	15
Chapter 3. SmartViewer Menus	18
End Points	18
Active Calls	29
History Calls.....	32
Setup Viewer	35
Active Events.....	36
History Events	41
Statistics Graph	46

Chapter 1. SmartViewer Overview

Introduction to SmartViewer for GateKeeper

AddPac SmartViewer software is developed for the easy monitoring of gateways registered at the GateKeeper and call status. Also, this program is based on web-based Java Applet. So any client system with Java Virtual Machine can be access to the SmartViewer.

Main Features

1. Endpoint registration, real-time monitoring of call status and active events

With SmartViewers, Gateways can be registered at the GateKeeper. Also, it offers real-time monitoring feature of the call status and active events between endpoints.

2. Offers statistical information of the endpoints' status and active calls

SmartViewer displays statistical information of the endpoints (Gateway, Terminal, MCU) and of the active calls.

3. Easy-to-use Graphic User Interface

By deploying windows-based Graphic User Interface, the users can easily operate the program (SmartViewer).

4. Web-based management function

Web-based management, not complicated CLI (Command Line Interface) management, of the GateKeeper is possible.

5. Easy search function of VoIP gateway's call history and events

Call history and events can be searched with various search terms.

6. Sort function

The results displayed on the monitor can be sorted with various terms.

7. Easy search by one click

With one click, the user can search desired items easily.

System Requirement for GateKeeper SmartViewer

Hardware

CPU	Intel Pentium III or higher system
MEMORY	128MB or more
Hard Disk	10GB or more

Software

Operating System	MS Windows 2000 / XP / Server 2003
	Java 2 Runtime Environment SE v1.4.2
	Web browser such as Microsoft Internet Explorer

Chapter 2. Access to SmartViewer

Java 2 Runtime Environment v1.4.2 Download

To access to GateKeeper SmartViewer, Java Virtual Machine is required to execute Java applet on web browser. SUN distributes Java Virtual Machine with the name of J2RE (Java 2 Runtime Environment).

The J2RE version used this guide is J2RE v1.4.2, the latest version. Visit “<http://java.sun.com/j2se/downloads.html>” and download the program.

* J2SE is “Java 2 Platform Standard Edition”. one of the J2RE.

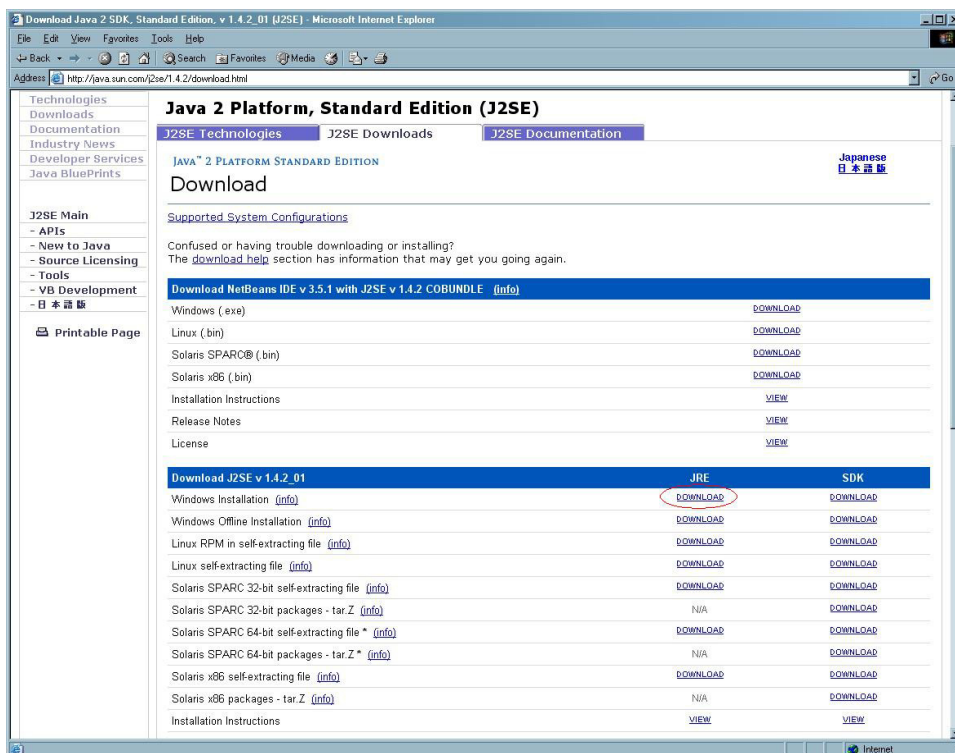
Step 1

Select “J2SE 1.4.2” as shown below.



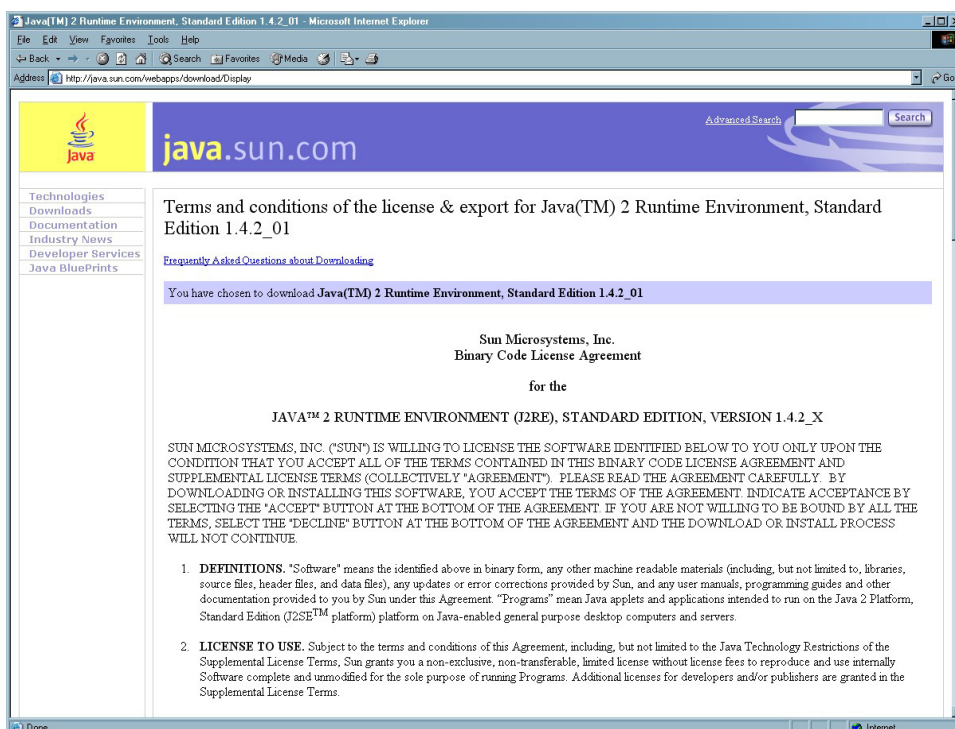
Step 2

Select ‘J2SE Windows’.



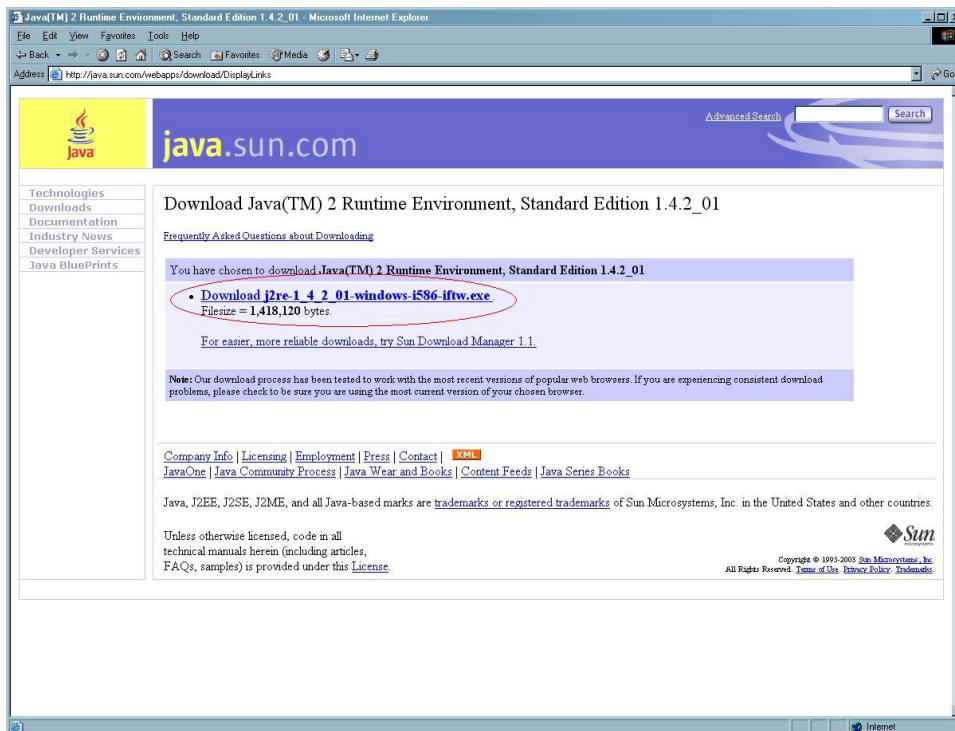
Step 3

Carefully review “Terms and conditions of the license~” and select “agree”.



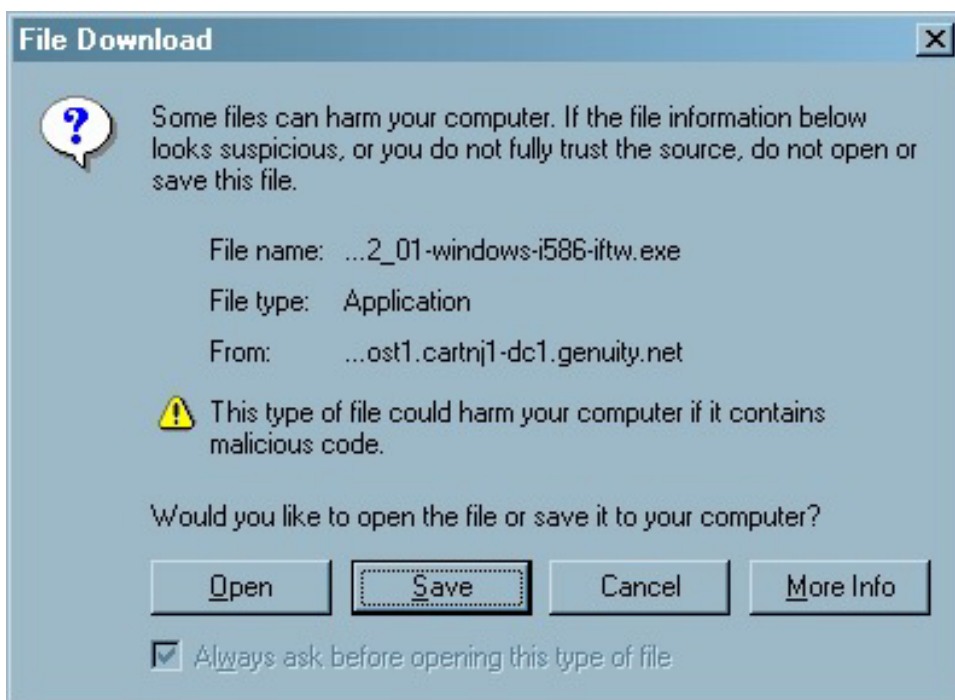
Step 4

Download “Java 2 Runtime Environment, Standard Edition v1.4.2_01”.



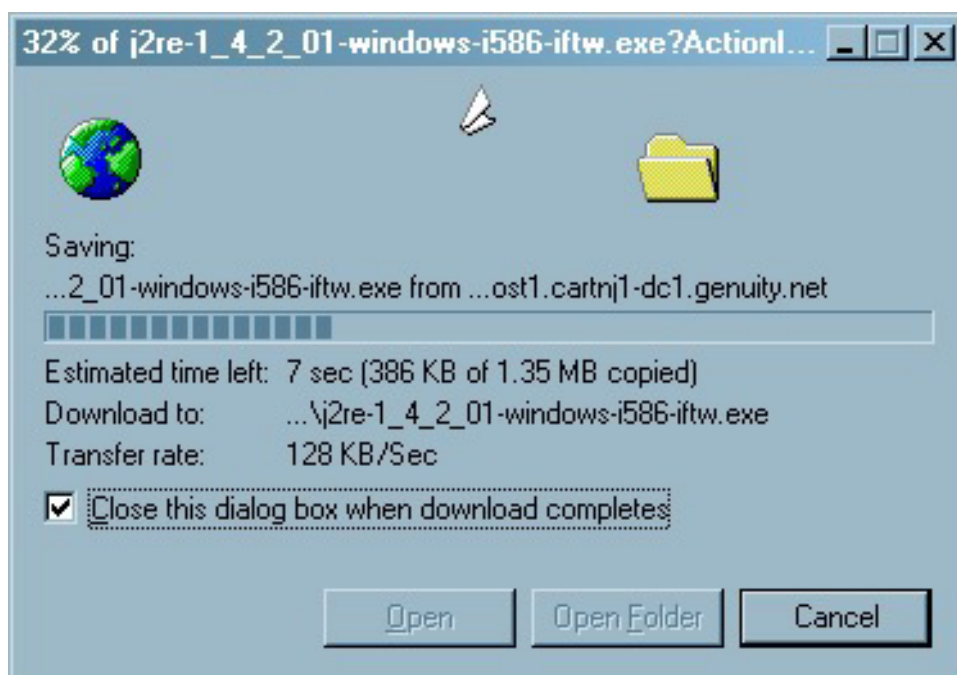
Step 5

“File Download” dialog box appears. Click “Save” to save it to the PC.



Step 6

Then the program is downloaded.

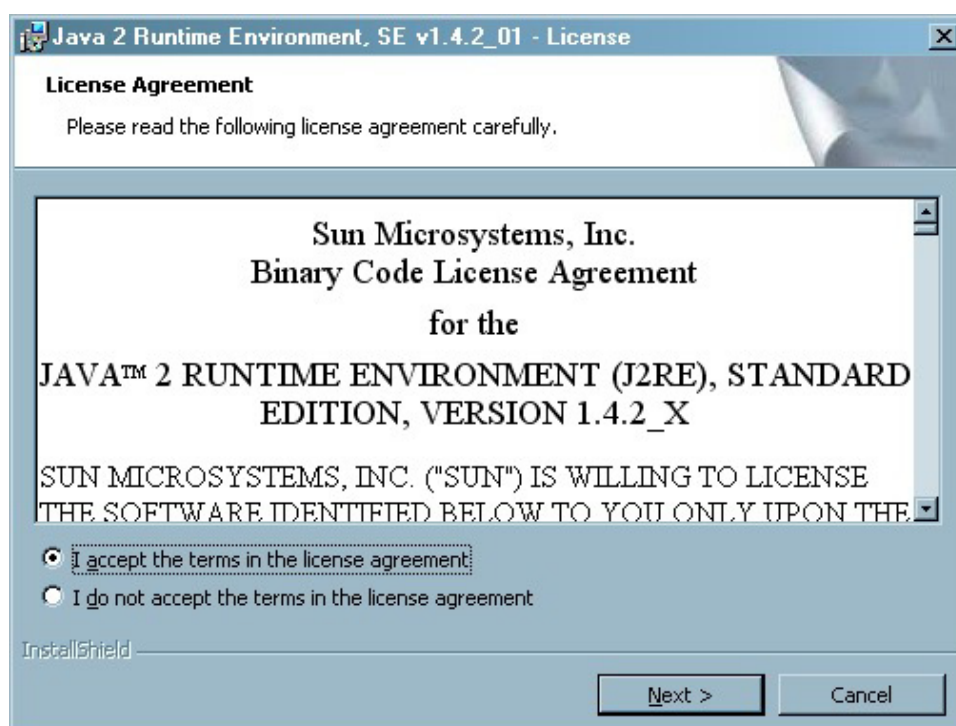


Java 2 Runtime Environment v1.4.2 Installation

This part explains how to install “J2RE v 1.4.2” file.

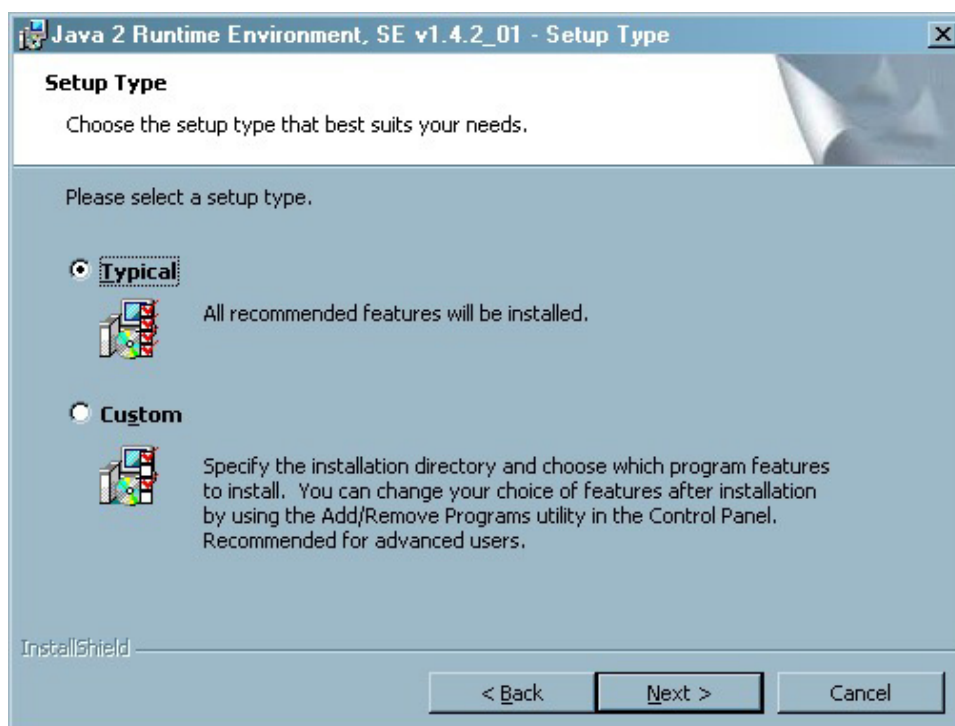
Step 1

Execute “j2re-1_4_2_01-windows-i586-iftw.exe” file. Then the License Agreement appears. Review it carefully and select “I accept~”. Then click “Next>” button to proceed.



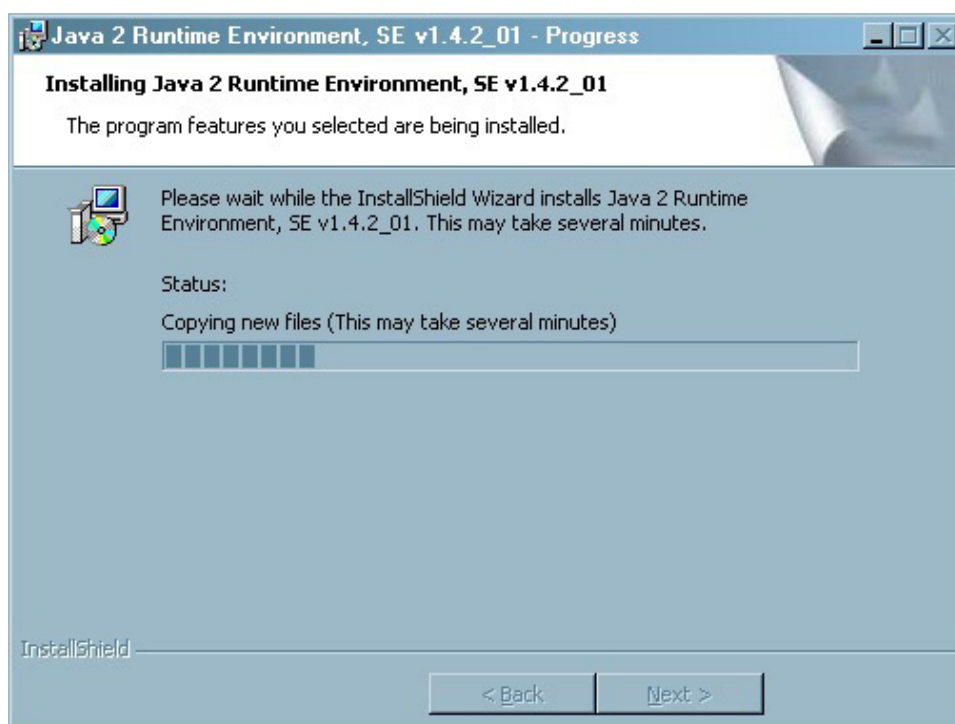
Step 2

Select “Setup Type” and click “Next>” button.



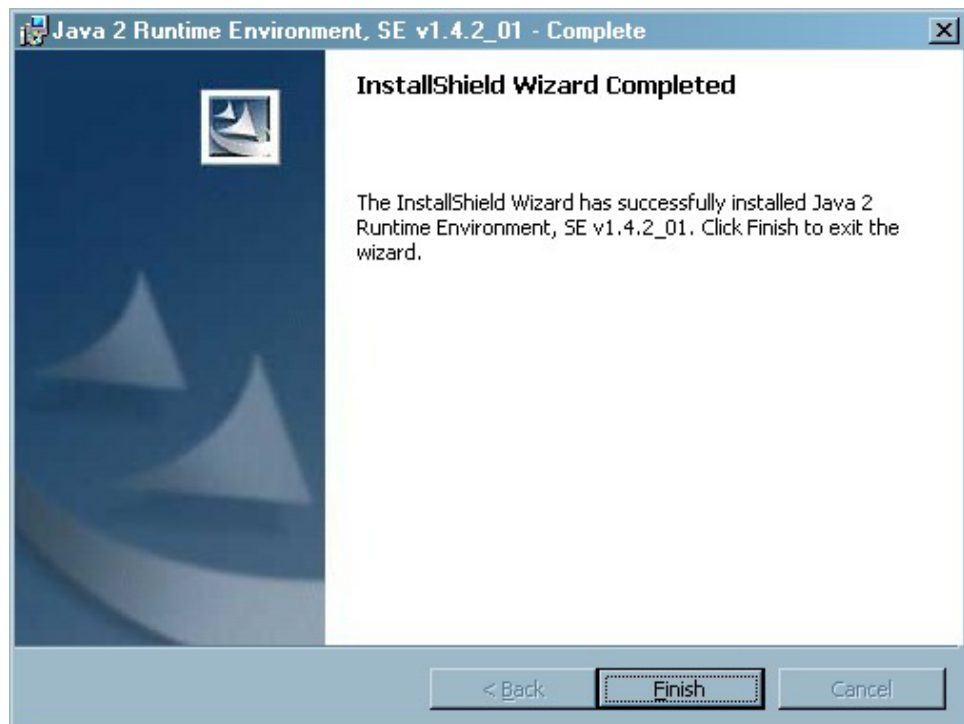
Step 3

The program is being installed.



Step 4

Click “Finish” to exit the wizard.

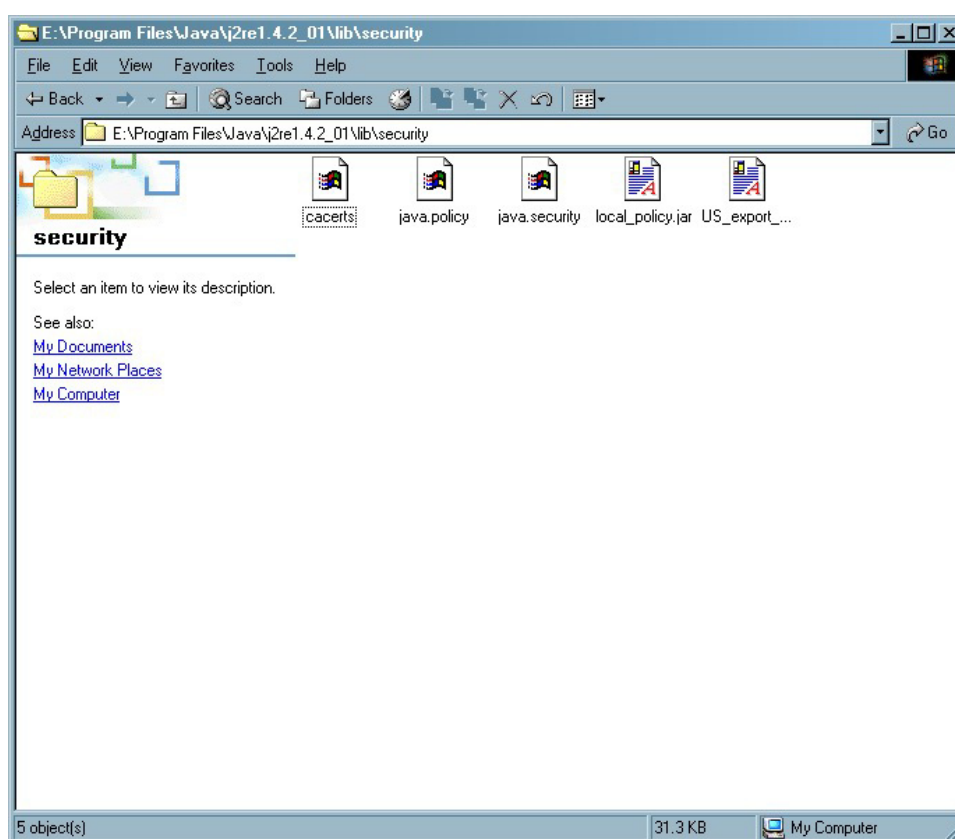


Java 2 Runtime Environment Security Setting

To GateKeeper, the security configuration of the system should be changed. This guide is based on “MS-Windows 2000 Professional”.

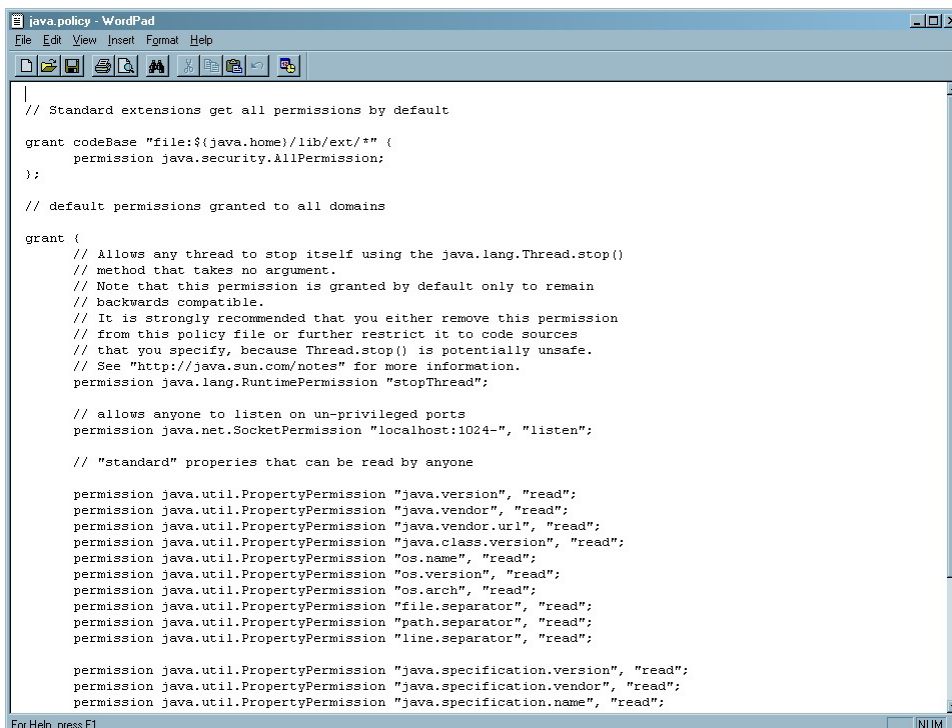
Step 1

Open “C:\Program Files\Java\j2re1.4.2_01\lib\security”. This directory can be variable depending on each user’s system.



Step 2

Open “Java.policy” file with Windows’s Word Pad.



```

java.policy - WordPad
File Edit View Insert Format Help
|
// Standard extensions get all permissions by default

grant codeBase "file:${java.home}/lib/ext/*" {
    permission java.security.AllPermission;
};

// default permissions granted to all domains

grant {
    // Allows any thread to stop itself using the java.lang.Thread.stop()
    // method that takes no argument.
    // Note that this permission is granted by default only to remain
    // backwards compatible.
    // It is strongly recommended that you either remove this permission
    // from this policy file or further restrict it to code sources
    // that you specify, because Thread.stop() is potentially unsafe.
    // See "http://java.sun.com/notes" for more information.
    permission java.lang.RuntimePermission "stopThread";

    // allows anyone to listen on un-privileged ports
    permission java.net.SocketPermission "localhost:1024-", "listen";

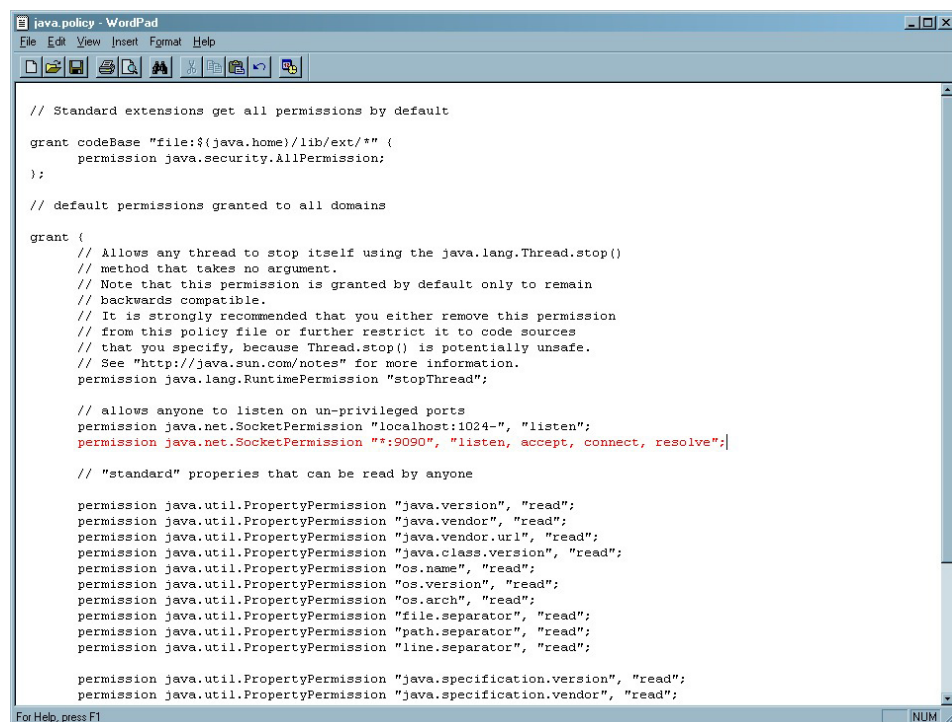
    // "standard" properties that can be read by anyone

    permission java.util.PropertyPermission "java.version", "read";
    permission java.util.PropertyPermission "java.vendor", "read";
    permission java.util.PropertyPermission "java.vendor.url", "read";
    permission java.util.PropertyPermission "java.class.version", "read";
    permission java.util.PropertyPermission "os.name", "read";
    permission java.util.PropertyPermission "os.version", "read";
    permission java.util.PropertyPermission "os.arch", "read";
    permission java.util.PropertyPermission "file.separator", "read";
    permission java.util.PropertyPermission "path.separator", "read";
    permission java.util.PropertyPermission "line.separator", "read";

    permission java.util.PropertyPermission "java.specification.version", "read";
    permission java.util.PropertyPermission "java.specification.vendor", "read";
    permission java.util.PropertyPermission "java.specification.name", "read";

```

Step 3

3) Add “permission java.net.SocketPermission “*:9090¹”, “listen, accept, connect, resolve;” as shown below.


```

java.policy - WordPad
File Edit View Insert Format Help
|
// Standard extensions get all permissions by default

grant codeBase "file:${java.home}/lib/ext/*" {
    permission java.security.AllPermission;
};

// default permissions granted to all domains

grant {
    // Allows any thread to stop itself using the java.lang.Thread.stop()
    // method that takes no argument.
    // Note that this permission is granted by default only to remain
    // backwards compatible.
    // It is strongly recommended that you either remove this permission
    // from this policy file or further restrict it to code sources
    // that you specify, because Thread.stop() is potentially unsafe.
    // See "http://java.sun.com/notes" for more information.
    permission java.lang.RuntimePermission "stopThread";

    // allows anyone to listen on un-privileged ports
    permission java.net.SocketPermission "localhost:1024-", "listen";
    permission java.net.SocketPermission "*:9090", "listen, accept, connect, resolve";

    // "standard" properties that can be read by anyone

    permission java.util.PropertyPermission "java.version", "read";
    permission java.util.PropertyPermission "java.vendor", "read";
    permission java.util.PropertyPermission "java.vendor.url", "read";
    permission java.util.PropertyPermission "java.class.version", "read";
    permission java.util.PropertyPermission "os.name", "read";
    permission java.util.PropertyPermission "os.version", "read";
    permission java.util.PropertyPermission "os.arch", "read";
    permission java.util.PropertyPermission "file.separator", "read";
    permission java.util.PropertyPermission "path.separator", "read";
    permission java.util.PropertyPermission "line.separator", "read";

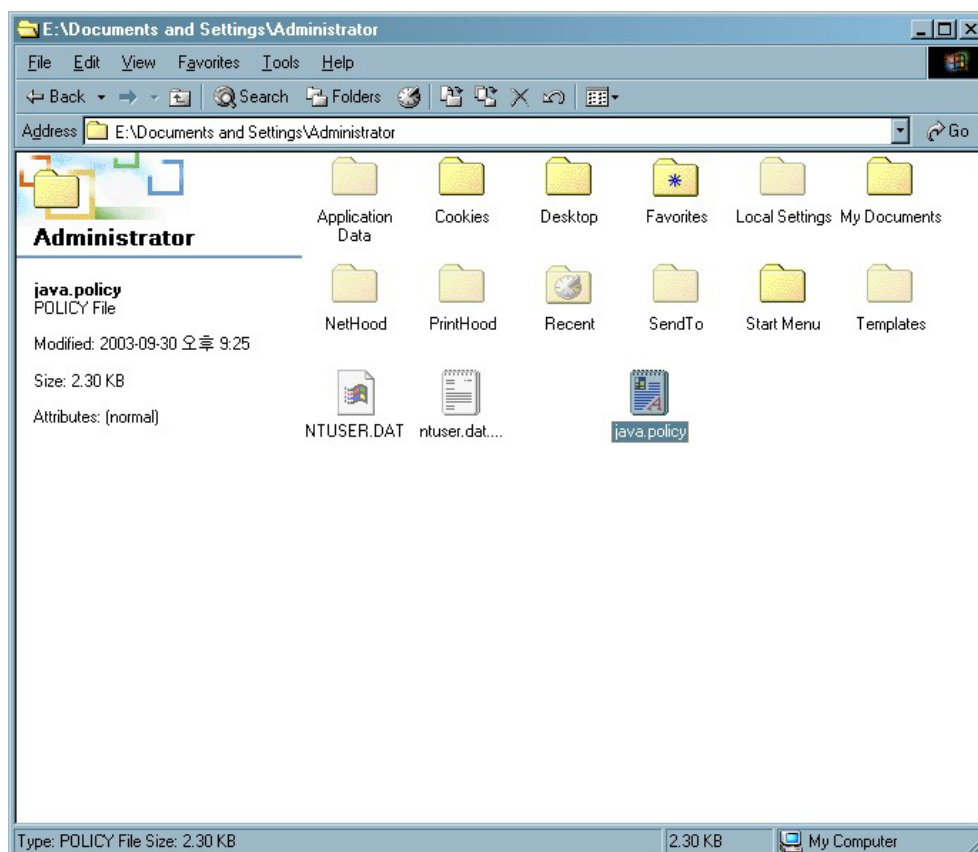
    permission java.util.PropertyPermission "java.specification.version", "read";
    permission java.util.PropertyPermission "java.specification.vendor", "read";

```

¹ Open only “9090” port for security.

Step 4

Save the file and copy “java.policy” file to the user account. If the logged in user is “Administrator”, copy the file to “C:\Documents and Settings\Administrator”. Also, rename the copied “java.policy” file as “.java.policy”.



GateKeeper SmartViewer Access

Access to the GateKeeper SmartViewer. This guide is based on Microsoft Internet Explorer.

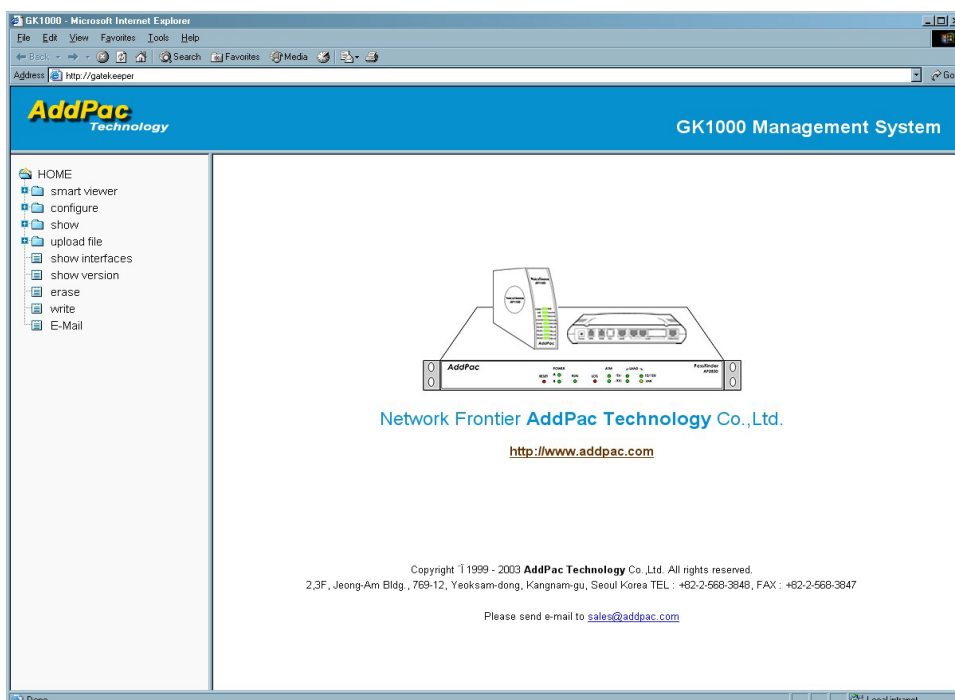
Step 1

Enter the IP address of the GateKeeper at the address bar of the Windows. Then the below dialog box appears.



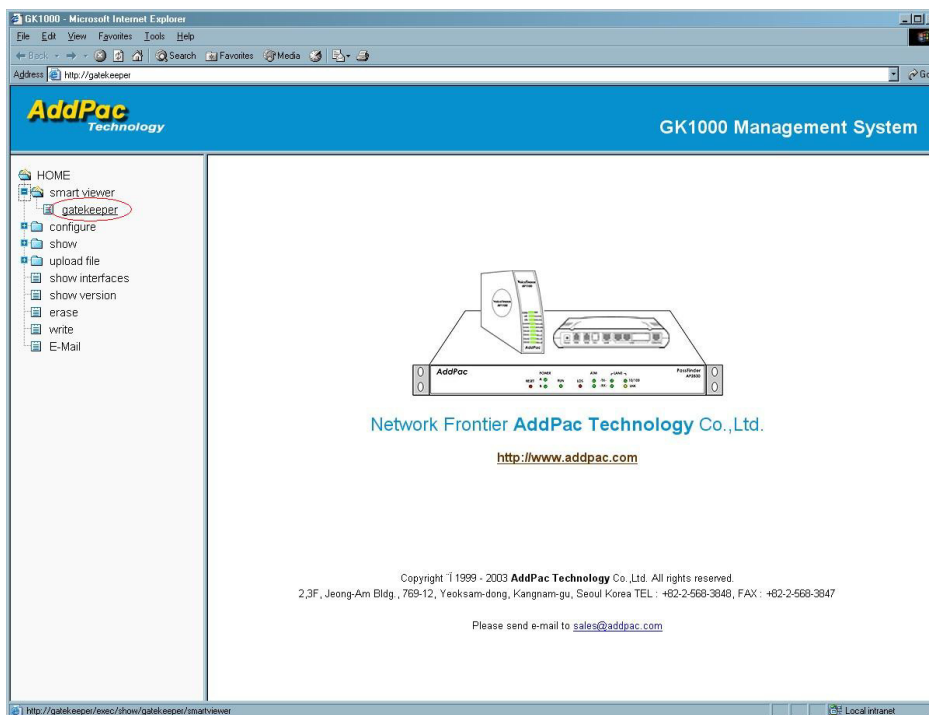
Step 2

Enter User Name (root) and Password (router). Then the below window appears.



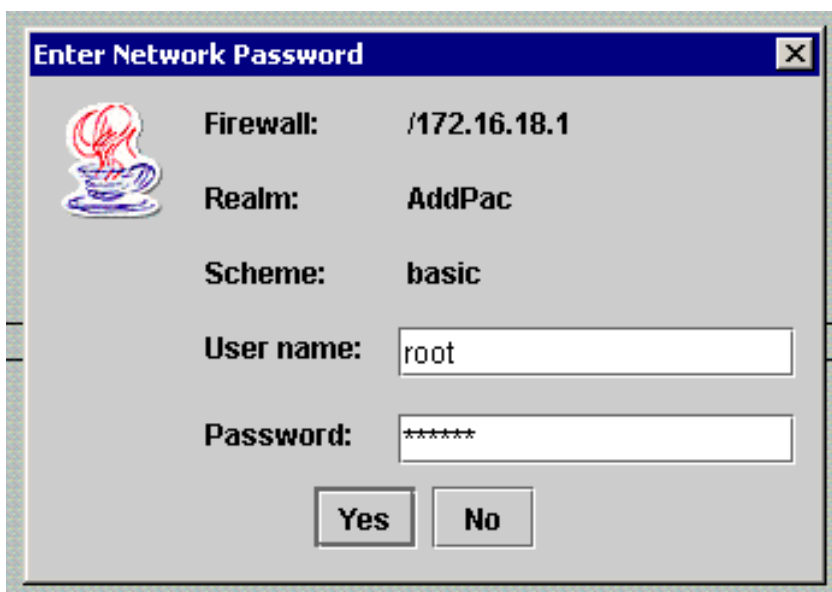
Step 3

Click “SmartViewer” → “GateKeeper”.



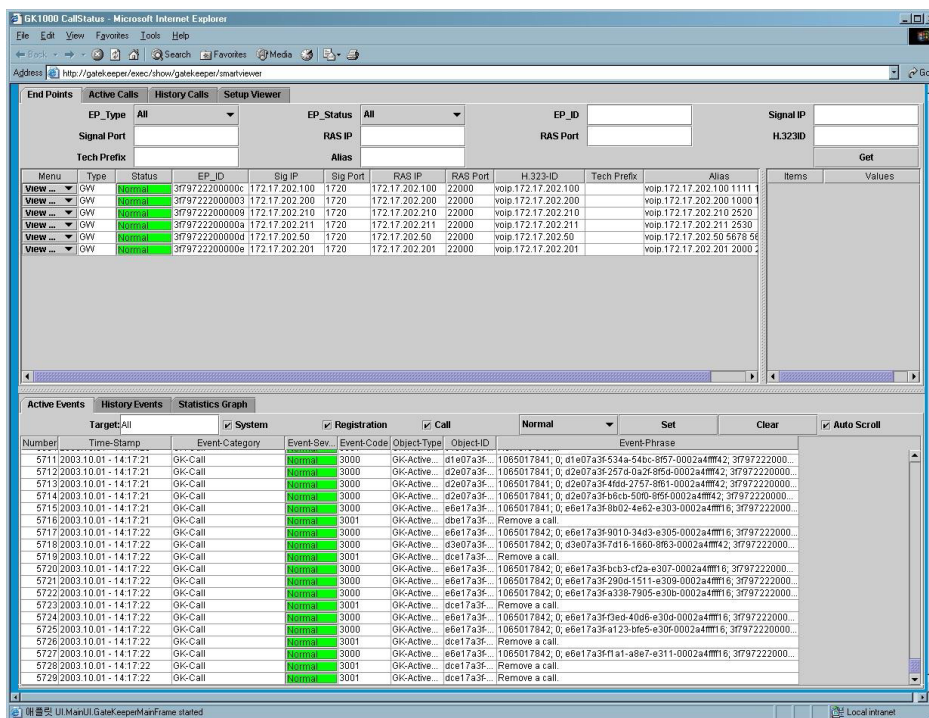
Step 4

After the Java Applet loading, the below login dialog box appears. Enter the User Name and Password. (Use the same User Name and Password explained at 1).)



Step 5

The main page of SmartViewer is displayed.



Chapter 3. SmartViewer Menus

This chapter explains the menus of SmartViewer and examples.

End Points

End Point shows currently registered devices at the GateKeeper.

End Point includes Gateway, Terminal, other GateKeeper, MCU (Multi-point Control Unit, used for conference).

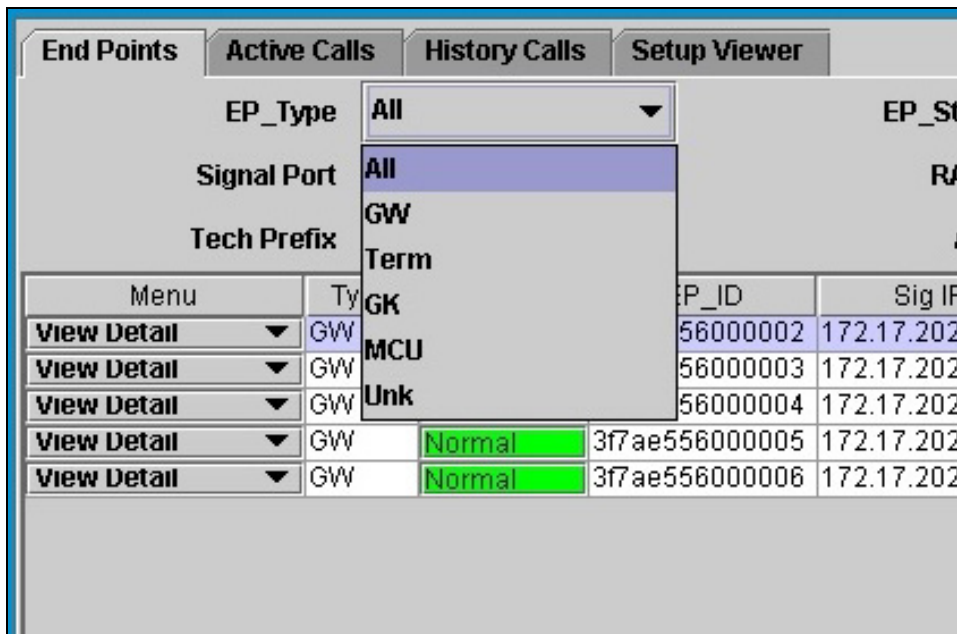
The user can change the layout of menus and view only desired information with specific search terms.

The screenshot shows the 'End Points' menu in SmartViewer. At the top, there are tabs for 'End Points', 'Active Calls', 'History Calls', and 'Setup Viewer'. Below the tabs are search filters: EP_Type (All), EP_Status (All), EP_ID, Signal IP, Signal Port, RAS IP, RAS Port, H.323ID, Tech Prefix, and Alias. A 'Get' button is located to the right of the filters. Below the filters is a table with columns: Menu, Type, Status, EP_ID, Sig IP, Sig Port, RAS IP, RAS Port, H.323-ID, Tech Prefix, Alias, Items, and Values. The table contains five rows of data, each with a 'VIEW ...' dropdown in the 'Menu' column.

Menu	Type	Status	EP_ID	Sig IP	Sig Port	RAS IP	RAS Port	H.323-ID	Tech Prefix	Alias	Items	Values
VIEW ...	GW	Normal	3f79722200000c	172.17.202.100	1720	172.17.202.100	22000	voip.172.17.202.100		voip.172.17.202.100.1111		
VIEW ...	GW	Normal	3f797222000003	172.17.202.200	1720	172.17.202.200	22000	voip.172.17.202.200		voip.172.17.202.200.1000		
VIEW ...	GW	Normal	3f797222000009	172.17.202.210	1720	172.17.202.210	22000	voip.172.17.202.210		voip.172.17.202.210.2520		
VIEW ...	GW	Normal	3f79722200000a	172.17.202.211	1720	172.17.202.211	22000	voip.172.17.202.211		voip.172.17.202.211.2530		
VIEW ...	GW	Normal	3f79722200000d	172.17.202.50	1720	172.17.202.50	22000	voip.172.17.202.50		voip.172.17.202.50.5678		
VIEW ...	GW	Normal	3f79722200000e	172.17.202.201	1720	172.17.202.201	22000	voip.172.17.202.201		voip.172.17.202.201.2000		

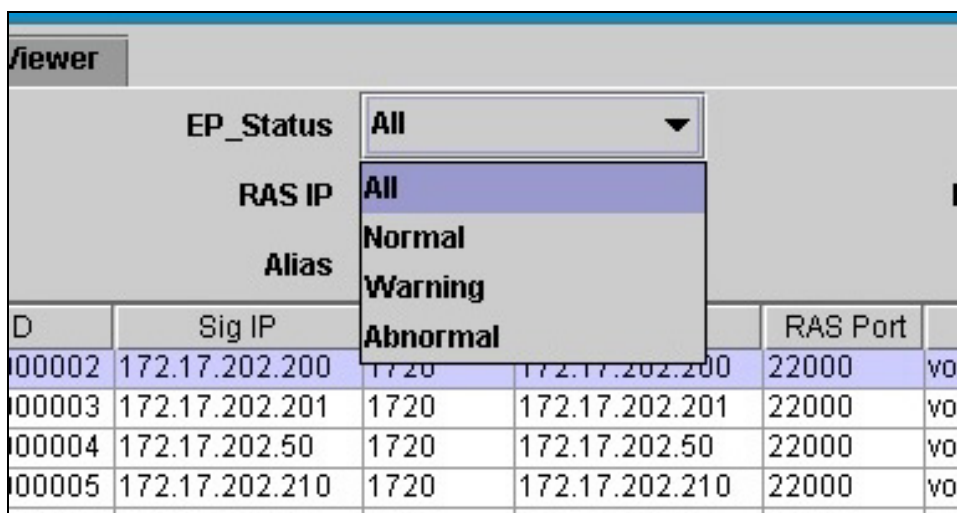
Search terms (number of terms can be selected)

- EP_Type (End Point Type): Select End point type.



All	Select all devices.
GW	Select Gateway.
Term	Select Terminal.
GK	Select GateKeeper. When interoperating with other GKs, both can register each other.
MCU	Multipoint Control Unit.
Unk	Unknown devices other than above mentioned devices.

- EP_Status (End Point Status) : Search by the status of the Endpoints. There are four status of “All, Normal, Warning, Abnormal”. “All” means all the status, “Normal” means normal mode. “Warning” and “Abnormal” means there is a problem between the GateKeeper and the End Point.



ID	Sig IP	RAS IP	Alias	RAS Port	RAS Port
000002	172.17.202.200	1720		172.17.202.200	22000
000003	172.17.202.201	1720		172.17.202.201	22000
000004	172.17.202.50	1720		172.17.202.50	22000
000005	172.17.202.210	1720		172.17.202.210	22000

- EP_ID(End Point ID) : Specific End Point ID. “ID” means a code assigned by the GateKeeper when registering a device.
- Signal IP : Select a specific Signal IP address. Typically, it indicates VoIP interface IP address of the device.
- Signal Port : Select a specific Signal Port. It indicates TCP/IP port of VoIP system. Typically, “1720” is used for the signal port.
- RAS IP : RAS (Registration and Admission, Status) IP address. It is the IP address when the device is registered at the GateKeeper. Typically, this IP address is same as the Signal IP address
- RAS Port : Select RAS Port. The default is “22000”.
- H.323ID: Select H323-ID. The user can use H.323 ID to view information of the Gateway.
- Tech Prefix : Select a Tech Prefix. When Prefix is assigned for Destination pattern of Called Party or Calling Party, the related

information is displayed.

- Alias: "Alias" means the gateway registered at the GateKeeper and E.164 number of the Gateway.

Status information

- Menu
 - ✓ View Detail – Show the detailed information of the selected device.
 - ✓ View All Active Call – Show the all active calls related the selected device on the Active Calls tab.
 - ✓ View Inbound Call – Show the Inbound call information of the selected device.
 - ✓ View Outbound Call – Show the Outbound call information of the selected device.
 - ✓ View Call History –Show the Call History related the selected device on the Call History tab.
 - ✓ View Events – Show the all events of the selected device on the window below.

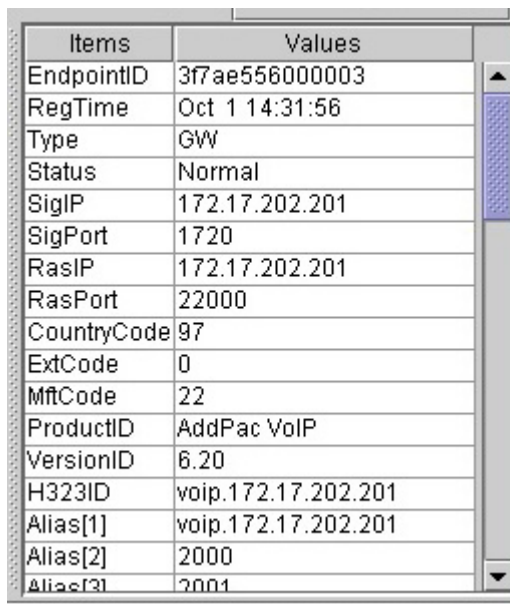
Tech Prefix			
Menu	Type	Status	EP_ID
View Detail ▼	GW	Normal	3f79722200000c
View Detail	GW	Normal	3f797222000003
View All Active Call	GW	Normal	3f797222000009
View Inbound Call	GW	Normal	3f79722200000a
View Outbound Call	GW	Normal	3f79722200000d
View Call History	GW	Normal	3f79722200000e
View Events			

- Type: It shows the type of the device registered at the GateKeeper. The supported types are GW(Gateway), Term(Terminal), MCU(Multipoint Control Unit), GK(GateKeeper) and Unk(Unknown).

- Status : The status of the registered device is shows as “Normal, Warning, Abnormal”.
- Sig IP : Signal IP address. The VoIP Signal IP address of the registered device. Typically, it indicates VoIP interface IP address of the device
- Sig Port : Signal Port. The Signal Port of the VoIP Interface. Typically, it is “1720”.
- RAS IP : RAS(Registration and Admission, Status) IP address. The IP address of the device used for communication with the GateKeeper.
- RAS Port : RAS Port. The TCP/IP port used for communication with the GateKeeper.
- EP_ID : End Point ID of the device (EP_ID is assigned randomly when the device is registered at the GateKeeper.)
- H.323-ID : H323-ID. The ID of the device registered at the GateKeeper.
- Tech Prefix : Show the Prefix of the E.164 Number
- Alias : The End point type and E.164 number of Gateway.

View Detail

When View Detail is selected, the detailed information of the device is displayed at the detail window on the right side.



Items	Values
EndpointID	3f7ae556000003
RegTime	Oct 1 14:31:56
Type	GW
Status	Normal
SigIP	172.17.202.201
SigPort	1720
RasIP	172.17.202.201
RasPort	22000
CountryCode	97
ExtCode	0
MftCode	22
ProductID	AddPac VoIP
VersionID	6.20
H323ID	voip.172.17.202.201
Alias[1]	voip.172.17.202.201
Alias[2]	2000
Alias[3]	2001

View All Active Call

When “View All Active Call” under Menu is selected, the active call information of the selected Gateway is displayed on the Active Call table.

Step 1

Select “View All Active Call” from “Menu”.

Menu	Type	Status	EP_ID	Sig IP	Sig Port	RAS IP	RAS Port	H.323-ID
View All Active...	GW	Normal	3f7ae556000002	172.17.202.200	1720	172.17.202.200	22000	voip.172.17.202.200
View Detail	GW	Normal	3f7ae556000003	172.17.202.201	1720	172.17.202.201	22000	voip.172.17.202.201
View All Active Call	GW	Normal	3f7ae556000004	172.17.202.50	1720	172.17.202.50	22000	voip.172.17.202.50
View Inbound Call	GW	Normal	3f7ae556000005	172.17.202.210	1720	172.17.202.210	22000	voip.172.17.202.210
View Outbound Call	GW	Normal	3f7ae556000006	172.17.202.211	1720	172.17.202.211	22000	voip.172.17.202.211
View Call History								
View Events								

Step 2

It moves to “Active Calls’ Tab and displays all the related information.

Menu	Start Time	Duration(sec)	Call ID	SRC-EP-ID	SRC-EP-IP	SRC-E.164	DST-EP-ID	DST-EP-IP	DST-E.164
View ...	2003.10.01 - 15:32:17		10.61f27a3fb5de-77a2-835d-000...	3f7ae556000003	172.17.202.201	2025	3f7ae5560...	172.17.202.200	1025
View ...	2003.10.01 - 15:32:17		10.61f27a3f122f-6375-8361-0002...	3f7ae556000003	172.17.202.201	2014	3f7ae5560...	172.17.202.200	1014
View ...	2003.10.01 - 15:32:17		10.61f27a3f-a800-4e39-835f-0002a...	3f7ae556000003	172.17.202.201	2046	3f7ae5560...	172.17.202.200	1046
View ...	2003.10.01 - 15:32:17		10.61f27a3f-40f0-454a-8363-0002a...	3f7ae556000003	172.17.202.201	2016	3f7ae5560...	172.17.202.200	1016
View ...	2003.10.01 - 15:32:17		10.61f27a3f-6477-c0ba-8365-0002...	3f7ae556000003	172.17.202.201	2058	3f7ae5560...	172.17.202.200	1058
View ...	2003.10.01 - 15:32:18		10.62f27a3f-6803-4458-836b-000...	3f7ae556000003	172.17.202.201	2023	3f7ae5560...	172.17.202.200	1023
View ...	2003.10.01 - 15:32:18		10.62f27a3f-20ab-2444-8367-000...	3f7ae556000003	172.17.202.201	2041	3f7ae5560...	172.17.202.200	1041
View ...	2003.10.01 - 15:32:18		10.62f27a3f-087f-92c0-8369-0002...	3f7ae556000003	172.17.202.201	2056	3f7ae5560...	172.17.202.200	1056
View ...	2003.10.01 - 15:32:19		10.62f27a3f-42b7-0638-836d-000...	3f7ae556000003	172.17.202.201	2020	3f7ae5560...	172.17.202.200	1020
View ...	2003.10.01 - 15:32:19		10.63f27a3f-fa43-a8a5-836f-0002a...	3f7ae556000003	172.17.202.201	2005	3f7ae5560...	172.17.202.200	1005
View ...	2003.10.01 - 15:32:19		10.63f27a3f-4562-5b1b-8371-000...	3f7ae556000003	172.17.202.201	2053	3f7ae5560...	172.17.202.200	1053
View ...	2003.10.01 - 15:32:20		10.63f27a3f-a05e-0f0e-8373-0002...	3f7ae556000003	172.17.202.201	2051	3f7ae5560...	172.17.202.200	1051
View ...	2003.10.01 - 15:32:20		10.64f27a3f-0b66-62e6-8375-0002...	3f7ae556000003	172.17.202.201	2004	3f7ae5560...	172.17.202.200	1004
View ...	2003.10.01 - 15:32:21		10.64f27a3f-2ee7-caa5-8377-0002...	3f7ae556000003	172.17.202.201	2035	3f7ae5560...	172.17.202.200	1035
View ...	2003.10.01 - 15:32:21		10.65f27a3f-e5b9-0872-8379-000...	3f7ae556000003	172.17.202.201	2038	3f7ae5560...	172.17.202.200	1038
View ...	2003.10.01 - 15:32:21		10.65f27a3f-4651-4608-837b-0002...	3f7ae556000003	172.17.202.201	2022	3f7ae5560...	172.17.202.200	1022

View Inbound Call

When “View Inbound Call” under Menu is selected, the Inbound call information of the selected Gateway is displayed on the Active Calls tab.

Step 1

Select “View Inbound Call”

Menu	Type	Status	EP_ID	Sig IP	Sig Port	RAS IP	RAS Port	H.323-ID	Tech Prefix
View Inbound ...	GW	Normal	3f7ae556000002	172.17.202.200	1720	172.17.202.200	22000	voip.172.17.202.200	voip.172.17.202.200
View Detail	GW	Normal	3f7ae556000003	172.17.202.201	1720	172.17.202.201	22000	voip.172.17.202.201	voip.172.17.202.201
View All Active Call	GW	Normal	3f7ae556000004	172.17.202.50	1720	172.17.202.50	22000	voip.172.17.202.50	voip.172.17.202.50
View Inbound Call	GW	Normal	3f7ae556000005	172.17.202.210	1720	172.17.202.210	22000	voip.172.17.202.210	voip.172.17.202.210
View Outbound Call	GW	Normal	3f7ae556000006	172.17.202.211	1720	172.17.202.211	22000	voip.172.17.202.211	voip.172.17.202.211
View Call History									
View Events									

Step 2

1) It moves to “Active Calls” Tab and displays all the related information.

Menu	Start Time	Duration(sec)	Call ID	SRC EP-ID	SRC EP-IP	SRC-E.164	DST EP-ID	DST EP-IP	DST-E.164
View ...	2003.10.01 - 15:32:41		1779f27a3f3ac39-f43-8403-0002...	3f7ae556000003	172.17.202.201	2019	3f7ae5560...	172.17.202.200	1019
View ...	2003.10.01 - 15:32:40		1978f27a3f17a0-5737-836f-0002...	3f7ae556000003	172.17.202.201	2049	3f7ae5560...	172.17.202.200	1049
View ...	2003.10.01 - 15:32:47		107ef27a3f46eb-2311-8425-000...	3f7ae556000003	172.17.202.201	2032	3f7ae5560...	172.17.202.200	1032
View ...	2003.10.01 - 15:32:47		107ff27a3f3ce65-c564-8427-0002...	3f7ae556000003	172.17.202.201	2026	3f7ae5560...	172.17.202.200	1026
View ...	2003.10.01 - 15:32:47		107ff27a3f3f6c9-139f-8429-0002a...	3f7ae556000003	172.17.202.201	2003	3f7ae5560...	172.17.202.200	1003
View ...	2003.10.01 - 15:32:47		107ff27a3f3f90f-be94-842b-0002a...	3f7ae556000003	172.17.202.201	2006	3f7ae5560...	172.17.202.200	1006
View ...	2003.10.01 - 15:32:48		1080f27a3f4882-d450-842f-000...	3f7ae556000003	172.17.202.201	2007	3f7ae5560...	172.17.202.200	1007
View ...	2003.10.01 - 15:32:48		1080f27a3f6b96-a944-842f-0002...	3f7ae556000003	172.17.202.201	2057	3f7ae5560...	172.17.202.200	1057
View ...	2003.10.01 - 15:32:48		1080f27a3f9909-32f9-8431-0002...	3f7ae556000003	172.17.202.201	2045	3f7ae5560...	172.17.202.200	1045
View ...	2003.10.01 - 15:32:49		1080f27a3fccdc-28ac-8433-0002...	3f7ae556000003	172.17.202.201	2054	3f7ae5560...	172.17.202.200	1054
View ...	2003.10.01 - 15:32:49		1081f27a3f4501-2c78-8435-0002...	3f7ae556000003	172.17.202.201	2028	3f7ae5560...	172.17.202.200	1028
View ...	2003.10.01 - 15:32:49		1081f27a3f3feca-3bfa-8439-0002a...	3f7ae556000003	172.17.202.201	2015	3f7ae5560...	172.17.202.200	1015
View ...	2003.10.01 - 15:32:49		1081f27a3f67b3-14e8-8437-000...	3f7ae556000003	172.17.202.201	2038	3f7ae5560...	172.17.202.200	1038
View ...	2003.10.01 - 15:32:50		1081f27a3f79db-e1e7-843b-000...	3f7ae556000003	172.17.202.201	2034	3f7ae5560...	172.17.202.200	1034
View ...	2003.10.01 - 15:32:50		1082f27a3f189-9721-843f-0002...	3f7ae556000003	172.17.202.201	2010	3f7ae5560...	172.17.202.200	1010
View ...	2003.10.01 - 15:32:50		1082f27a3f4255-6940-843f-0002...	3f7ae556000003	172.17.202.201	2010	3f7ae5560...	172.17.202.200	1010

View Outbound Call

When “View Outbound Call” under Menu is selected, the Outbound call information of the selected Gateway is displayed on the Active Calls tab.

Step 1

Select “View Inbound Call”

Menu	Type	Status	EP_ID	Sig IP	Sig Port	RAS IP	RAS Port	H.323-ID	Tech Prefix
View Inbound ...	GW	Normal	3f7ae556000002	172.17.202.200	1720	172.17.202.200	22000	voip.172.17.202.200	voip.172.17.202.200
View Detail	GW	Normal	3f7ae556000003	172.17.202.201	1720	172.17.202.201	22000	voip.172.17.202.201	voip.172.17.202.201
View All Active Call	GW	Normal	3f7ae556000004	172.17.202.210	1720	172.17.202.210	22000	voip.172.17.202.210	voip.172.17.202.210
View Inbound Call	GW	Normal	3f7ae556000005	172.17.202.210	1720	172.17.202.210	22000	voip.172.17.202.210	voip.172.17.202.210
View Outbound Call	GW	Normal	3f7ae556000006	172.17.202.211	1720	172.17.202.211	22000	voip.172.17.202.211	voip.172.17.202.211
View Call History									
View Events									

Step 2

It moves to “Active Calls” Tab and displays all the related information.

End Points		Active Calls		History Calls		Setup Viewer			
Start Time From	Start Time To	Duration From	Duration To	Call ID	SRC EP_ID	SRC E164	SRC EP_ID		
DST EP_IP	DST EP_ID	DST EP_IP	DST EP_ID						
Menu	Start Time	Duration(sec)	Call ID	SRC-EP-ID	SRC-EP-IP	SRC-E.164	DST-EP-ID	DST-EP-IP	DST-E.164
View ...	2003.10.01 - 15:33:13		599f27a3f-7c10-6c84-84d5-0002...	3f7ae556000003	172.17.202.201	2053	3f7ae5560...	172.17.202.200	1053
View ...	2003.10.01 - 15:33:14		59af27a3f-ccc4-5062-84a9-0002...	3f7ae556000003	172.17.202.201	2024	3f7ae5560...	172.17.202.200	1024
View ...	2003.10.01 - 15:33:14		599f27a3f-cb0d-1215-84d7-0002...	3f7ae556000003	172.17.202.201	2051	3f7ae5560...	172.17.202.200	1051
View ...	2003.10.01 - 15:33:14		59af27a3f-a478-53a1-84db-000...	3f7ae556000003	172.17.202.201	2001	3f7ae5560...	172.17.202.200	1001
View ...	2003.10.01 - 15:33:14		59af27a3f-684d-4c96-84d9-0002...	3f7ae556000003	172.17.202.201	2000	3f7ae5560...	172.17.202.200	1000
View ...	2003.10.01 - 15:33:14		59af27a3f-61e0-616b-84df-0002...	3f7ae556000003	172.17.202.201	2035	3f7ae5560...	172.17.202.200	1039
View ...	2003.10.01 - 15:33:14		59af27a3f-0847-2e3e-84e1-000...	3f7ae556000003	172.17.202.201	2018	3f7ae5560...	172.17.202.200	1018
View ...	2003.10.01 - 15:33:15		59af27a3f-3afa-6b3d-84e3-0002...	3f7ae556000003	172.17.202.201	2011	3f7ae5560...	172.17.202.200	1011
View ...	2003.10.01 - 15:33:15		59bf27a3f-54c0-59b5-84e7-0002...	3f7ae556000003	172.17.202.201	2013	3f7ae5560...	172.17.202.200	1013
View ...	2003.10.01 - 15:33:15		59bf27a3f-1e5e-1d39-84e5-000...	3f7ae556000003	172.17.202.201	2036	3f7ae5560...	172.17.202.200	1032
View ...	2003.10.01 - 15:33:16		59cf27a3f-1598-335f-84e9-0002...	3f7ae556000003	172.17.202.201	2012	3f7ae5560...	172.17.202.200	1012
View ...	2003.10.01 - 15:33:16		09cf27a3f-735c-21fb-84e0-0002...	3f7ae556000003	172.17.202.201	2049	3f7ae5560...	172.17.202.200	1049
View ...	2003.10.01 - 15:33:17		09cf27a3f-56cc-0a19-84ed-0002...	3f7ae556000003	172.17.202.201	2027	3f7ae5560...	172.17.202.200	1027
View ...	2003.10.01 - 15:33:17		09df27a3f-459f-cfb2-84ef-0002a...	3f7ae556000003	172.17.202.201	2019	3f7ae5560...	172.17.202.200	1019
View ...	2003.10.01 - 15:33:17		09df27a3f-5065-978c-84f1-0002...	3f7ae556000003	172.17.202.201	2044	3f7ae5560...	172.17.202.200	1044
View ...	2003.10.01 - 15:33:17		09af27a3f-3f06c-4204-84d2-0002...	3f7ae556000003	172.17.202.201	2031	3f7ae5560...	172.17.202.200	1031

View Call History

When “View Call History” under Menu is selected, the call history information of the selected Gateway is displayed on the History Calls tab.

Step 1

Select “View Call History”

Menu	Type	Status	EP_ID	Sig IP	Sig Port	RAS IP	RAS Port	H.323-ID	Tech Prefix
View Detail	GW	Normal	3f7ae556000002	172.17.202.200	1720	172.17.202.200	22000	voip.172.17.202.200	
View Detail	GW	Normal	3f7ae556000003	172.17.202.201	1720	172.17.202.201	22000	voip.172.17.202.201	
View All Active Call	GW	Normal	3f7ae556000004	172.17.202.50	1720	172.17.202.50	22000	voip.172.17.202.50	
View Inbound Call	GW	Normal	3f7ae556000005	172.17.202.210	1720	172.17.202.210	22000	voip.172.17.202.210	
View Outbound Call	GW	Normal	3f7ae556000006	172.17.202.211	1720	172.17.202.211	22000	voip.172.17.202.211	
View Call History									
View Events									

Step 2

It moves to “Active Calls” Tab and displays all the related information.

Menu	Start Time	End Time	Duration	Call ID	SRC EPID	SRC EP IP	SRC E:11
View ...	2003.10.01 - 15:33:20	2003.10.01 - 15:33:32	12	a0f27a3f-d740-ec3e-8507-0002a4fff42	3f7ae5560...	172.17.202.201	2002
View ...	2003.10.01 - 15:33:20	2003.10.01 - 15:33:31	11	a0f27a3f-0206-ebad-8505-0002a4fff42	3f7ae5560...	172.17.202.201	2043
View ...	2003.10.01 - 15:33:20	2003.10.01 - 15:33:31	11	9ff27a3f-317e-f93a-8503-0002a4fff42	3f7ae5560...	172.17.202.201	2048
View ...	2003.10.01 - 15:33:19	2003.10.01 - 15:33:30	11	9ff27a3f-bf00-d6e9-8501-0002a4fff42	3f7ae5560...	172.17.202.201	2029
View ...	2003.10.01 - 15:33:19	2003.10.01 - 15:33:30	11	9ef27a3f-ee2e-39b9-84ff-0002a4fff42	3f7ae5560...	172.17.202.201	2047
View ...	2003.10.01 - 15:33:19	2003.10.01 - 15:33:30	11	9ef27a3f-68ab-d68c-84fd-0002a4fff42	3f7ae5560...	172.17.202.201	2031
View ...	2003.10.01 - 15:33:19	2003.10.01 - 15:33:30	11	9ef27a3f-8d6d-b542-84fb-0002a4fff42	3f7ae5560...	172.17.202.201	2009
View ...	2003.10.01 - 15:33:18	2003.10.01 - 15:33:30	12	9ef27a3f-2fa9-4d2f-84f9-0002a4fff42	3f7ae5560...	172.17.202.201	2030
View ...	2003.10.01 - 15:33:18	2003.10.01 - 15:33:29	11	9ef27a3f-42bd-6bcb-84f7-0002a4fff42	3f7ae5560...	172.17.202.201	2042
View ...	2003.10.01 - 15:33:17	2003.10.01 - 15:33:29	12	9ef27a3f-cc70-09a8-84f5-0002a4fff42	3f7ae5560...	172.17.202.201	2022
View ...	2003.10.01 - 15:33:17	2003.10.01 - 15:33:29	12	9df27a3f-896a-429d-84f3-0002a4fff42	3f7ae5560...	172.17.202.201	2021
View ...	2003.10.01 - 15:33:17	2003.10.01 - 15:33:28	11	9df27a3f-5065-978c-84f1-0002a4fff42	3f7ae5560...	172.17.202.201	2044
View ...	2003.10.01 - 15:33:17	2003.10.01 - 15:33:28	11	9df27a3f-459f-cfb2-84ef-0002a4fff42	3f7ae5560...	172.17.202.201	2019
View ...	2003.10.01 - 15:33:17	2003.10.01 - 15:33:28	11	9cf27a3f-56cc-0a19-84e8-0002a4fff42	3f7ae5560...	172.17.202.201	2027

View Events

When “View Events” under Menu is selected, the events information of the selected Gateway is displayed on the History Events tab.

Menu	Type	Status	EP_ID	Sig IP	Sig Port	RAS IP	RAS Port	H.323-ID	Tech Prefix	Alias	Items	Values
View Events	GW	Normal	3f7ae556000002	172.17.202.200	1720	172.17.202.200	22000	voip.172.17.202.200		voip.172.17.202.200		
View Detail	GW	Normal	3f7ae556000003	172.17.202.201	1720	172.17.202.201	22000	voip.172.17.202.201		voip.172.17.202.201		
View Detail	GW	Normal	3f7ae556000004	172.17.202.50	1720	172.17.202.50	22000	voip.172.17.202.50		voip.172.17.202.50		
View Detail	GW	Normal	3f7ae556000005	172.17.202.210	1720	172.17.202.210	22000	voip.172.17.202.210		voip.172.17.202.210		
View Detail	GW	Normal	3f7ae556000006	172.17.202.211	1720	172.17.202.211	22000	voip.172.17.202.211		voip.172.17.202.211		

Active Events | **History Events** | Statistics Graph

Notification ID From: Notification ID To: Event Time From: 2003.10.01 - 14:30:40 Event Time To:

Category: All Severity: Minor Code: ObjectType:

ObjectID:

Notification-ID	Time-Stamp	Event-Category	Event-Severity	Event-Code	Object-Type	Object-ID	Event-Phrase
10	2003.10.01 - 14:31:54	GK-Registration	Major	2003	GK-RegisteredEndpoint	3f7ae556000002	GW, Normal, 3f7ae556000002, 172.17.202.200, 1720, 172.17.202.200

Active Calls

It shows the active calls information establish via the GateKeeper. Like End Points, the information can be selected with various search terms.

Menu	Start Time	Duration(sec)	Call ID	SRC-EP-ID	SRC-EP-IP	SRC-E-164	DST-EP-ID	DST-EP-IP	DST-E-164	Items	Values
View ...	2003.10.01 - 15:36:32		10.5f37a3f0d81-e805-89ed...	37ae55600003	172.17.202.201	2039	37ae5560...	172.17.202.200	1035		
View ...	2003.10.01 - 15:36:32		10.60f37a3f7a2a-a74a-89ef...	37ae55600003	172.17.202.201	2034	37ae5560...	172.17.202.200	1038		
View ...	2003.10.01 - 15:36:33		10.61f37a3f75a3-1a9f-89f1...	37ae55600003	172.17.202.201	2019	37ae5560...	172.17.202.200	1019		
View ...	2003.10.01 - 15:36:33		10.62f37a3f2264-46dc-8993...	37ae55600003	172.17.202.201	2022	37ae5560...	172.17.202.200	1022		
View ...	2003.10.01 - 15:36:34		10.62f37a3f387c-57a6-89f5...	37ae55600003	172.17.202.201	2021	37ae5560...	172.17.202.200	1021		
View ...	2003.10.01 - 15:36:34		10.62f37a3f6b71f-2eaf-89f9...	37ae55600003	172.17.202.201	2026	37ae5560...	172.17.202.200	1026		
View ...	2003.10.01 - 15:36:34		10.62f37a3f6b93-d9ea-89f7...	37ae55600003	172.17.202.201	2058	37ae5560...	172.17.202.200	1058		
View ...	2003.10.01 - 15:36:34		10.62f37a3f37a-4667-89f6...	37ae55600003	172.17.202.201	2008	37ae5560...	172.17.202.200	1008		
View ...	2003.10.01 - 15:36:34		10.62f37a3f6c210-1cbe-89f6...	37ae55600003	172.17.202.201	2003	37ae5560...	172.17.202.200	1003		
View ...	2003.10.01 - 15:36:35		10.63f37a3f6b9f-3897-8a01...	37ae55600003	172.17.202.201	2002	37ae5560...	172.17.202.200	1002		
View ...	2003.10.01 - 15:36:35		5.63f37a3f6762-7d47-8a0...	37ae55600003	172.17.202.201	2029	37ae5560...	172.17.202.200	1029		
View ...	2003.10.01 - 15:36:35		5.63f37a3f2b3-4023-89f...	37ae55600003	172.17.202.201	2056	37ae5560...	172.17.202.200	1056		
View ...	2003.10.01 - 15:36:36		5.64f37a3f8865-763f-8a05...	37ae55600003	172.17.202.201	2031	37ae5560...	172.17.202.200	1031		
View ...	2003.10.01 - 15:36:36		5.64f37a3f8797-0661-8a0...	37ae55600003	172.17.202.201	2027	37ae5560...	172.17.202.200	1027		
View ...	2003.10.01 - 15:36:36		5.64f37a3f265-4d25-8a09...	37ae55600003	172.17.202.201	2009	37ae5560...	172.17.202.200	1009		
View ...	2003.10.01 - 15:36:37		5.66f37a3f370a-1374-8a0...	37ae55600003	172.17.202.201	2020	37ae5560...	172.17.202.200	1020		

Search terms (multiple search terms selectable)

- Start Time From / Start Time To : Search based on call setup time. Double click the box, then the below select window appears for easy time setting.

[ActiveCall From Setup Time]

Year: 2003 **SUN** MON THE WEN THU FRI SAT

Month: 9		1	2	3	4	5	6
Day: 15	7	8	9	10	11	12	13
Hour: 21	14	15	16	17	18	19	20
Minute: 0	21	22	23	24	25	26	27
Second: 26	28	29	30				

OK

- Duration From / Duration To : Search based on call duration time. (unit; Seconds).
- Call ID : Search based on the call ID assigned by the GateKeeper.

- SRC EP_IP : Search based on the calling party's IP address.
- SRC E164 : Search based on the calling party's E.164 number.
- SRC EP_ID : Search based on the calling party's ID.
- DST EP_IP : Search based on the called party's IP address.
- DST E164 : Search based on the call's party's E.164 number.
- DST EP_ID : Search based on the call's party's ID.

Status information

- Menu :
 - ✓ View Detail – Show the detailed information of the selected Active Call at the Detail Window.
 - ✓ View Src End Point – Show the detailed information on the Source End Point of the selected Active Call at the Detail Window.
 - ✓ View Dest End Point – Show the detailed information on the Destination End Point of the selected Active Call at the Detail Window.
 - ✓ Get Call State From Src End Point – Get the Call State from Source End Point.
 - ✓ Get Call State From Dest End Point – Get the Call State from Destination End Point.
 - ✓ Go to Src End Point – Move to the Source End Point of the selected active call.
 - ✓ Go to Dest End Point – Move to the Destination End Point of the selected active call.
- Start Time : Shows the starting time of the H.323 Call.

- Duration(sec) : Show the duration time of the H.323 Call. Refreshed at every 5 sec.
- SRC-EP-IP : Displays the calling party's IP address.
- SRC-E.164 : Displays the calling party's E.164 number.
- SRC-EP-ID : Displays the calling party's ID.
- DST-EP-IP : Displays the called party's IP address.
- DST-E.164 : Displays the called party's E.164 number.
- DST-EP-ID : Displays the called party's ID.
- Call ID : Displays the Call ID assigned by the GateKeeper.

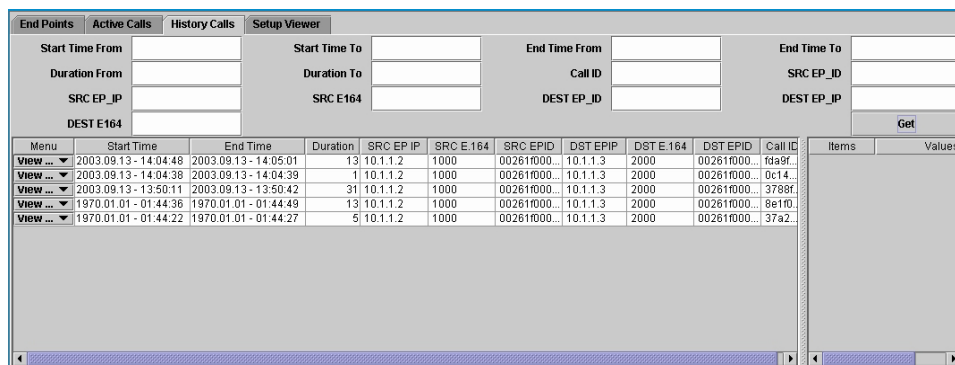
Detail Window

When “View Detail, View Src End Point, View Dest End Point” are selected at the menu, the detailed information is displayed at the window.

Items	Values
EndpointID	3f7ae556000002
RegTime	Oct 1 14:31:54
Type	GW
Status	Normal
SigIP	172.17.202.200
SigPort	1720
RasIP	172.17.202.200
RasPort	22000
CountryCode	97
ExtCode	0
MftCode	22
ProductID	AddPac VoIP
VersionID	6.20
H323ID	voip.172.17.202.200
Alias[1]	voip.172.17.202.200
Alias[2]	1000
Alias[3]	1001

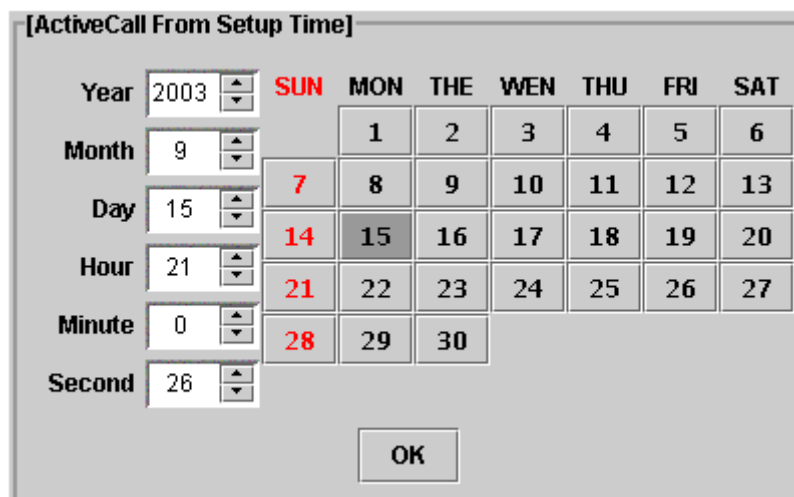
History Calls

It displays the call history information saved at the GateKeeper.



Search terms (Multiple search terms are selectable)

- Start Time From / Start Time To/ End Time From/ End Time To : Search based on call setup time an call ending time. Double click the box, then the below select window appears for easy time setting.



- Duration From / Duration To : Search based on call duration time.
- Call ID : Search based on the call ID assigned by the GateKeeper.
- SRC EP_ID : Search based on the calling party's ID.
- SRC EP_IP : Search based on the calling party's IP address.

- SRC E164 : Search based on the calling party's E.164 number.
- DST EP_ID : Search based on the call's party's ID.
- DST EP_IP : Search based on the called party's IP address.
- DST E164 : Search based on the call's party's E.164 number.

Status information

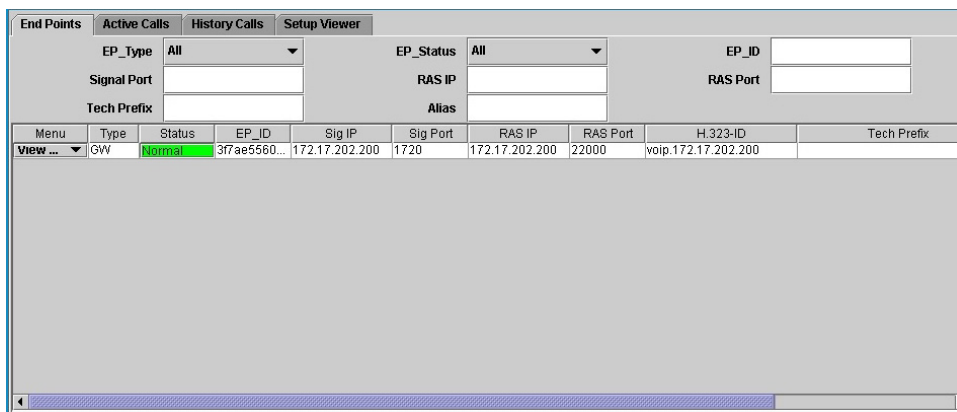
- View Src End Point Info– Show the detailed information on the Source End Point at the Detail Window.

Menu	Start Time	End Time	Duration	Call ID	SRC EPID	SRC EP IP	SRC E 164	DST EPIC	Items	Values
View ...	2003.10.01 - 15:37:10	2003.10.01 - 15:37:14	4	86f37a3f7ebb-a39f-8aaf-0002a...	3fae55600003	172.17.202.201	2019	3fae5560	EndpointID	3fae55600003
View Src End	2003.10.01 - 15:37:03	2003.10.01 - 15:37:14	11	7f37a3f8f81-9094-8abb-0002a...	3fae55600003	172.17.202.201	2013	3fae5560	RegTime	Oct 1 14:31:56
View Dst End	2003.10.01 - 15:37:03	2003.10.01 - 15:37:14	11	7f37a3f8f81-9094-8abb-0002a...	3fae55600003	172.17.202.201	2000	3fae5560	Type	GW
Go to Src End	2003.10.01 - 15:37:02	2003.10.01 - 15:37:13	11	7f37a3f210f828c-8ab7-0002a...	3fae55600003	172.17.202.201	2045	3fae5560	Status	Normal
Go to Dst End	2003.10.01 - 15:37:01	2003.10.01 - 15:37:13	11	7f37a3f549f-bc63-8ab5-0002a...	3fae55600003	172.17.202.201	2057	3fae5560	SignIP	172.17.202.201
View ...	2003.10.01 - 15:37:01	2003.10.01 - 15:37:13	12	7c37a3f2634-7b62-8aa9-0002...	3fae55600003	172.17.202.201	2005	3fae5560	SignPort	1720
View ...	2003.10.01 - 15:37:01	2003.10.01 - 15:37:13	12	7c37a3f6a2e-b207-8ab3-0002a...	3fae55600003	172.17.202.201	2018	3fae5560	RasIP	172.17.202.201
View ...	2003.10.01 - 15:37:01	2003.10.01 - 15:37:13	12	7c37a3f146c-a315-8aaf-0002a...	3fae55600003	172.17.202.201	2015	3fae5560	RasPort	22000
View ...	2003.10.01 - 15:37:00	2003.10.01 - 15:37:12	12	7c37a3f-d439-4e4d-8aab-0002...	3fae55600003	172.17.202.201	2048	3fae5560	CountryCode	97
View ...	2003.10.01 - 15:37:00	2003.10.01 - 15:37:12	12	7c37a3f3f4b-e06e-8aaf-0002a...	3fae55600003	172.17.202.201	2043	3fae5560	ExtCode	0
View ...	2003.10.01 - 15:36:57	2003.10.01 - 15:37:10	13	7937a3f206e-f71e-8a9b-0002a...	3fae55600003	172.17.202.201	2024	3fae5560	MTCCode	22
View ...	2003.10.01 - 15:36:58	2003.10.01 - 15:37:10	12	7af37a3f1a03-97b3-8aa7-0002...	3fae55600003	172.17.202.201	2054	3fae5560	ProductID	AddrPac VoIP
View ...	2003.10.01 - 15:36:58	2003.10.01 - 15:37:10	12	7af37a3fcc82-d15b-8aa3-0002...	3fae55600003	172.17.202.201	2042	3fae5560	VersionID	6.20
View ...	2003.10.01 - 15:36:58	2003.10.01 - 15:37:09	11	7af37a3f7d34-7228-8aa5-0002...	3fae55600003	172.17.202.201	2047	3fae5560	H323ID	voip.172.17.202.201
View ...	2003.10.01 - 15:36:58	2003.10.01 - 15:37:09	11	7af37a3f7d34-7228-8aa5-0002...	3fae55600003	172.17.202.201	2047	3fae5560	AliasT1	voip.172.17.202.201

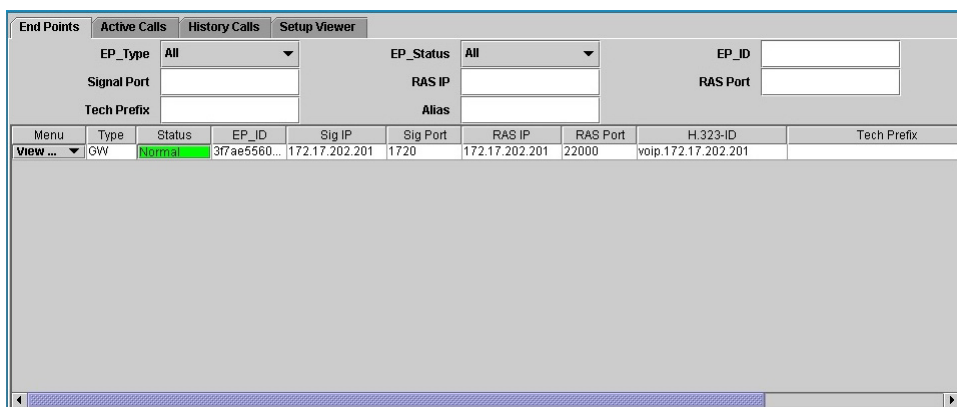
- View Dst End Point Info : Show the detailed information of the Destination End Point at the Detail Window.

Menu	Start Time	End Time	Duration	Call ID	SRC EPID	SRC EP IP	SRC E 164	DST EPIC	Items	Values
View ...	2003.10.01 - 15:37:10	2003.10.01 - 15:37:14	4	86f37a3f7ebb-a39f-8aaf-0002a...	3fae55600003	172.17.202.201	2019	3fae5560	EndpointID	3fae55600003
View Src End	2003.10.01 - 15:37:03	2003.10.01 - 15:37:14	11	7f37a3f8f81-9094-8abb-0002a...	3fae55600003	172.17.202.201	2013	3fae5560	RegTime	Oct 1 14:31:54
View Dst End	2003.10.01 - 15:37:03	2003.10.01 - 15:37:14	11	7f37a3f8f81-9094-8abb-0002a...	3fae55600003	172.17.202.201	2000	3fae5560	Type	GW
Go to Src End	2003.10.01 - 15:37:02	2003.10.01 - 15:37:13	11	7f37a3f210f828c-8ab7-0002a...	3fae55600003	172.17.202.201	2045	3fae5560	Status	Normal
Go to Dst End	2003.10.01 - 15:37:01	2003.10.01 - 15:37:13	11	7f37a3f549f-bc63-8ab5-0002a...	3fae55600003	172.17.202.201	2057	3fae5560	SignIP	172.17.202.200
View ...	2003.10.01 - 15:37:01	2003.10.01 - 15:37:13	12	7c37a3f2634-7b62-8aa9-0002...	3fae55600003	172.17.202.201	2005	3fae5560	SignPort	1720
View ...	2003.10.01 - 15:37:01	2003.10.01 - 15:37:13	12	7c37a3f6a2e-b207-8ab3-0002a...	3fae55600003	172.17.202.201	2018	3fae5560	RasIP	172.17.202.200
View ...	2003.10.01 - 15:37:01	2003.10.01 - 15:37:13	12	7c37a3f146c-a315-8aaf-0002a...	3fae55600003	172.17.202.201	2015	3fae5560	RasPort	22000
View ...	2003.10.01 - 15:37:00	2003.10.01 - 15:37:12	12	7c37a3f-d439-4e4d-8aab-0002...	3fae55600003	172.17.202.201	2048	3fae5560	CountryCode	97
View ...	2003.10.01 - 15:37:00	2003.10.01 - 15:37:12	12	7c37a3f3f4b-e06e-8aaf-0002a...	3fae55600003	172.17.202.201	2043	3fae5560	ExtCode	0
View ...	2003.10.01 - 15:36:57	2003.10.01 - 15:37:10	13	7937a3f206e-f71e-8a9b-0002a...	3fae55600003	172.17.202.201	2024	3fae5560	MTCCode	22
View ...	2003.10.01 - 15:36:58	2003.10.01 - 15:37:10	12	7af37a3f1a03-97b3-8aa7-0002...	3fae55600003	172.17.202.201	2054	3fae5560	ProductID	AddrPac VoIP
View ...	2003.10.01 - 15:36:58	2003.10.01 - 15:37:10	12	7af37a3fcc82-d15b-8aa3-0002...	3fae55600003	172.17.202.201	2042	3fae5560	VersionID	6.20
View ...	2003.10.01 - 15:36:58	2003.10.01 - 15:37:09	11	7af37a3f7d34-7228-8aa5-0002...	3fae55600003	172.17.202.201	2047	3fae5560	H323ID	voip.172.17.202.200
View ...	2003.10.01 - 15:36:58	2003.10.01 - 15:37:09	11	7af37a3f7d34-7228-8aa5-0002...	3fae55600003	172.17.202.201	2047	3fae5560	AliasT1	voip.172.17.202.200

- Go to Src End Point : Move to Source End Point of the End Points Tab to see the calling party's information.

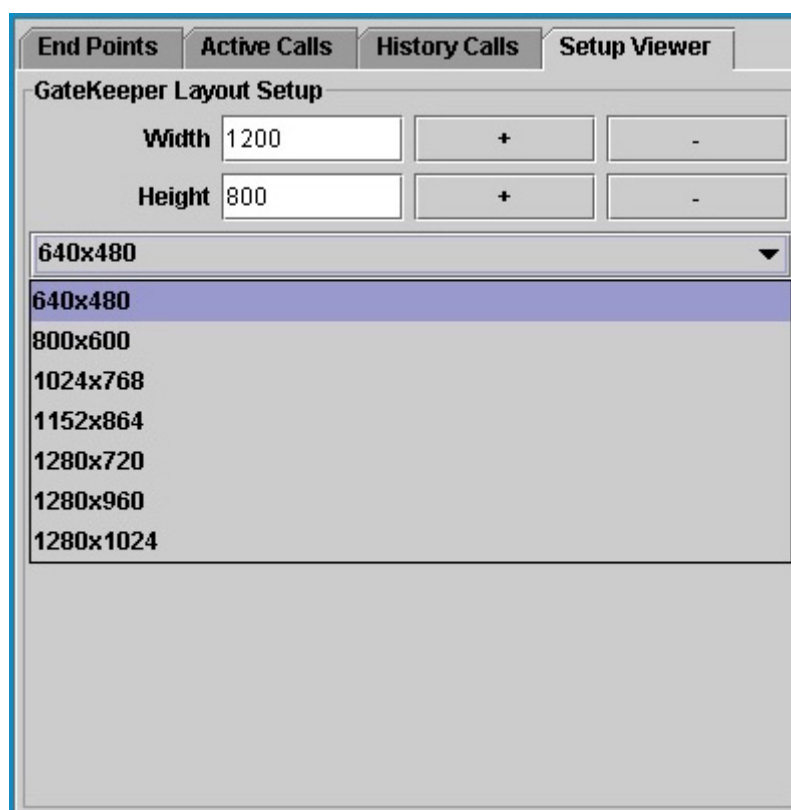


- Go to Dst End Point : Move to the Destination End Point of the End Points Tab to see the called party's information.



Setup Viewer

To change the display layout of GateKeeper SmartViewer. The users can use “+/-” button and resolution selection button to select the desired size.



Active Events

It shows all the event information related to the GateKeeper. Also, with search terms, only desired information can be displayed.

Active Events									
History Events									
Statistics Graph									
Target: All									
System									
Registration									
Call									
Normal									
Set									
Clear									
Auto Scroll									
Number	Time-Stamp	Event-Category	Event-Sub	Event-Code	Object-Type	Object-ID	Event-Phrase		
10339	2003.10.01 - 15:42:44	GK-Call	Normal	3000	GK-Active...	d4f47a3f...	1065022964; 0, d4f47a3f-8169-a5cf-938f-0002a4ff42; 3f7ae5560000...		
10340	2003.10.01 - 15:42:45	GK-Call	Normal	3000	GK-Active...	d5f47a3f...	1065022965; 0, d5f47a3f-58a8-1f6c-9391-0002a4ff42; 3f7ae5560000...		
10341	2003.10.01 - 15:42:45	GK-Call	Normal	3001	GK-Active...	c9f47a3f-7...	Remove a call.		
10342	2003.10.01 - 15:42:45	GK-Call	Normal	3001	GK-Active...	c9f47a3f-6...	Remove a call.		
10343	2003.10.01 - 15:42:45	GK-Periodic-Report	Normal	4000			Total-Endpoint= 5, Total-Call= 39		
10344	2003.10.01 - 15:42:45	GK-Call	Normal	3000	GK-Active...	d5f47a3f-f...	1065022965; 0, d5f47a3f-fa80-b9fe-9393-0002a4ff42; 3f7ae5560000...		
10345	2003.10.01 - 15:42:45	GK-Call	Normal	3001	GK-Active...	caf47a3f-9...	Remove a call.		
10346	2003.10.01 - 15:42:45	GK-Call	Normal	3001	GK-Active...	caf47a3f-2...	Remove a call.		
10347	2003.10.01 - 15:42:46	GK-Call	Normal	3001	GK-Active...	caf47a3f-f...	Remove a call.		
10348	2003.10.01 - 15:42:46	GK-Call	Normal	3001	GK-Active...	caf47a3f-3...	Remove a call.		
10349	2003.10.01 - 15:42:46	GK-Call	Normal	3000	GK-Active...	d6f47a3f...	1065022966; 0, d6f47a3f-2dcf-952a-9395-0002a4ff42; 3f7ae5560000...		
10350	2003.10.01 - 15:42:46	GK-Registration	Normal	2002	GK-Registr...	3f7ae556...	keepAlive		
10351	2003.10.01 - 15:42:46	GK-Call	Normal	3001	GK-Active...	cbf47a3f-5...	Remove a call.		
10352	2003.10.01 - 15:42:46	GK-Periodic-Report	Normal	4000			Total-Endpoint= 5, Total-Call= 38		
10353	2003.10.01 - 15:42:46	GK-Call	Normal	3000	GK-Active...	d6f47a3f...	1065022966; 0, d6f47a3f-6755-962a-9397-0002a4ff42; 3f7ae5560000...		
10354	2003.10.01 - 15:42:46	GK-Call	Normal	3001	GK-Active...	cbf47a3f-d...	Remove a call.		
10355	2003.10.01 - 15:42:47	GK-Call	Normal	3001	GK-Active...	cbf47a3f-2...	Remove a call.		
10356	2003.10.01 - 15:42:47	GK-Call	Normal	3000	GK-Active...	d7f47a3f...	1065022967; 0, d7f47a3f-15e3-41f1-939b-0002a4ff42; 3f7ae5560000...		
10357	2003.10.01 - 15:42:47	GK-Call	Normal	3000	GK-Active...	d6f47a3f...	1065022967; 0, d6f47a3f-2079-80ec-9399-0002a4ff42; 3f7ae5560000...		
10358	2003.10.01 - 15:42:47	GK-Call	Normal	3000	GK-Active...	d7f47a3f...	1065022967; 0, d7f47a3f-a85c-d69f-939d-0002a4ff42; 3f7ae5560000...		
10359	2003.10.01 - 15:42:47	GK-Call	Normal	3000	GK-Active...	d7f47a3f...	1065022967; 0, d7f47a3f-18ab-5e5c-939f-0002a4ff42; 3f7ae5560000...		
10360	2003.10.01 - 15:42:47	GK-Call	Normal	3001	GK-Active...	ccf47a3f-3...	Remove a call.		
10361	2003.10.01 - 15:42:47	GK-Periodic-Report	Normal	4000			Total-Endpoint= 5, Total-Call= 38		
10362	2003.10.01 - 15:42:47	GK-Call	Normal	3000	GK-Active...	d7f47a3f...	1065022967; 0, d7f47a3f-42d9-7964-93a1-0002a4ff42; 3f7ae5560000...		
10363	2003.10.01 - 15:42:48	GK-Call	Normal	3000	GK-Active...	d8f47a3f...	1065022968; 0, d8f47a3f-06b4-2827-93a3-0002a4ff42; 3f7ae5560000...		
10364	2003.10.01 - 15:42:48	GK-Call	Normal	3000	GK-Active...	d8f47a3f...	1065022968; 0, d8f47a3f-39ca-155d-93a5-0002a4ff42; 3f7ae5560000...		
10365	2003.10.01 - 15:42:48	GK-Call	Normal	3001	GK-Active...	cdf47a3f-5...	Remove a call.		
10366	2003.10.01 - 15:42:48	GK-Periodic-Report	Normal	4000			Total-Endpoint= 5, Total-Call= 40		
10367	2003.10.01 - 15:42:48	GK-Call	Normal	3001	GK-Active...	cdf47a3f-a...	Remove a call.		

Search terms (Multiple search terms are selectable)

- Target : Select one from "All, GW(Gateway), Term(Terminal), MCU(Multipoint Control Unit), GK(GateKeeper)". Only the event information of the selected devices is displayed.
- System : Only shows event information related to the GateKeeper.
- Registration : Only shows event information related to the registration of the Gateways to the GateKeeper.
- Call : Only show the event information related to H.323 Call.

- Severity : Displays the severity of the events. When a specific level is selected, only events of the level and higher level are displayed. "Normal" means normal operation and other severity levels indicate abnormal operation.

<input checked="" type="checkbox"/> Call			Normal ▼	Set
Object-Type	Object-ID		Event-Phrase	
Active...	d6f47a3f...	Rem	Critical	
Active...	d7f47a3f...	Rem	Major	
Active...	e2f47a3f...	1065	Minor	b-5987-93e5-0002a4fff4
		Total	Warning	35
Active...	d7f47a3f...	Rem	Normal	
Active...	e2f47a3f-c...	1065022979; 0; e2f47a3f-c983-26f0-93e7-0002a4fff4		
Active...	d8f47a3f...	Remove a call.		
Active...	e3f47a3f...	1065022979; 0; e3f47a3f-efcb-f2c1-93e9-0002a4fff4		

- Set : Click to show the events complying with the search terms.
- Clear: Remove all the information on the current events window. (Not related to the information at the GateKeeper's memory).
- Auto scroll : When this feature is turned off, it only shows new events when the user moves the scroll bar of the window.

Status information

- Notification ID : The ID numbers of the Events according to their starting time.
- Time-Stamp : The time when the event is occurred.
- Event-Category : The category of the events.
- Event-Severity : Indicates the severity of the events. (Normal, Warning, Minor, Major, Critical). Each level is marked with a different color.
- Event-Code : Displays the code of the Event-Category.
- Object-type : Displays the Object Type. The type of the device which the event is occurred.
- Object-ID : Displays the Object-ID. The ID is assigned by the GateKeeper randomly.
- Event-Phrase : Displays the detailed information of the Event.

Event-Code

The bellows are the description of the Event-Codes.

Event Codes	Description
1000	The system is rebooting now.
1001	The system has been reset.
1002	The GateKeeper service is started.
1003	The GateKeeper is shutting down by the operator.
1004	The GateKeeper service is terminated.
1005	APM_TransportOpen
1006	APM_TransportClose
1007	APM_LoginFail
2000	Create an End Point.
2001	Remove an End Point.
2002	PeriodicRegistration. Indicated the periodical registration of the Gateway.
2003	TTL expired. The TTL value of the packet for the GateKeeper re-registration is exceed the limit.
2100	RegistrationRejectBy_DiscoveryRequired
2101	RegistrationR jectBy_InvalidRevision.
2102	RegistrationRejectBy_InvalidCallSignalAddress
2103	RegistrationRejectBy_InvalidRASAddress
2104	RegistrationRejectBy_DuplicateAlias
2105	RegistrationRejectBy_InvalidTerminalType
2106	RegistrationRejectBy_UndefinedReason
2107	RegistrationRejectBy_TransportNotSupported
2108	RegistrationRejectBy_TransportQOSNotSupported
2109	RegistrationRejectBy_ResourceUnavailable
2110	RegistrationRejectBy_InvalidAlias
2111	RegistrationRejectBy_SecurityDenial
2112	RegistrationRejectBy_FullRegistrationRequired
2113	RegistrationRejectBy_AdditiveRegistrationNotSupported
2114	RegistrationRejectBy_InvalidTerminalAliases
2115	RegistrationRejectBy_GenericDataReason
2116	RegistrationRejectBy_NeededFeatureNotSupported
3000	CreateCall

3001	RemoveCall
3100	AdmissionRejectBy_CalledPartyNotRegistered
3101	AdmissionRejectBy_InvalidPermission
3102	AdmissionRejectBy_RequestDenied
3103	AdmissionRejectBy_UndefinedReason
3104	AdmissionRejectBy_CallerNotRegistered
3105	AdmissionRejectBy_RouteCallToGateKeeper
3106	AdmissionRejectBy_InvalidEndpointIdentifier
3107	AdmissionRejectBy_ResourceUnavailable
3108	AdmissionRejectBy_SecurityDenial
3109	AdmissionRejectBy_QosControlNotSupported
3110	AdmissionRejectBy_IncompleteAddress
3111	AdmissionRejectBy_AliasesInconsistent
3112	AdmissionRejectBy_RouteCallToSCN
3113	AdmissionRejectBy_ExceedsCallCapacity
3114	AdmissionRejectBy_CollectDestination
3115	AdmissionRejectBy_CollectPIN
3116	AdmissionRejectBy_GenericDataReason
3117	AdmissionRejectBy_NeededFeatureNotSupported
4000	Show all the results of the calls and Endpoints.

History Events

Show the Events History. With search terms, only desired information can be displayed.

Notific...	Time-Stamp	Event-Category	Event-Severity	Event-Code	Object-Type	Object-ID	Event-Phrase
47442	2003.10.01 - 15:43:59	GK-Call	Normal	3001	GK-Active...	14f57a3f-c...	Remove a call.
47441	2003.10.01 - 15:43:59	GK-Call	Normal	3000	GK-Active...	1f57a3f-3...	1065023038; 0; 1f57a3f-9e76-1244-9561-0002a4ff42; 3f7ae5560000...
47440	2003.10.01 - 15:43:59	GK-Call	Normal	3000	GK-Active...	1f57a3f-a...	1065023038; 0; 1f57a3f-9ae7-5380-9578-0002a4ff42; 3f7ae5560000...
47439	2003.10.01 - 15:43:59	GK-Call	Normal	3000	GK-Active...	1f57a3f-c...	1065023038; 0; 1f57a3f-c725-bdd4-957f-0002a4ff42; 3f7ae5560000...
47438	2003.10.01 - 15:43:59	GK-Call	Normal	3001	GK-Active...	13f57a3f-	Remove a call.
47437	2003.10.01 - 15:43:59	GK-Call	Normal	3001	GK-Active...	14f57a3f-	Remove a call.
47436	2003.10.01 - 15:43:59	GK-Call	Normal	3001	GK-Active...	13f57a3f-	Remove a call.
47435	2003.10.01 - 15:43:59	GK-Call	Normal	3001	GK-Active...	13f57a3f-	Remove a call.
47434	2003.10.01 - 15:43:58	GK-Call	Normal	3000	GK-Active...	1ef57a3f-	1065023038; 0; 1ef57a3f-1269-1675-957b-0002a4ff42; 3f7ae5560000...
47433	2003.10.01 - 15:43:58	GK-Call	Normal	3000	GK-Active...	1ef57a3f-	1065023038; 0; 1ef57a3f-1cb-c487-9579-0002a4ff42; 3f7ae5560000...
47432	2003.10.01 - 15:43:58	GK-Call	Normal	3000	GK-Active...	1ef57a3f-	1065023038; 0; 1ef57a3f-6eb3-b9ec-9577-0002a4ff42; 3f7ae5560000...
47431	2003.10.01 - 15:43:58	GK-Call	Normal	3001	GK-Active...	12f57a3f-	Remove a call.
47430	2003.10.01 - 15:43:58	GK-Call	Normal	3001	GK-Active...	12f57a3f-	Remove a call.
47429	2003.10.01 - 15:43:57	GK-Call	Normal	3000	GK-Active...	1df57a3f-	1065023037; 0; 1df57a3f-dc37-40a6-9575-0002a4ff42; 3f7ae5560000...
47428	2003.10.01 - 15:43:57	GK-Call	Normal	3001	GK-Active...	11f57a3f-	Remove a call.
47427	2003.10.01 - 15:43:57	GK-Call	Normal	3000	GK-Active...	1df57a3f-	1065023037; 0; 1df57a3f-1373-7705-9573-0002a4ff42; 3f7ae5560000...
47426	2003.10.01 - 15:43:57	GK-Call	Normal	3000	GK-Active...	1df57a3f-	1065023037; 0; 1df57a3f-efca-a0fe-9571-0002a4ff42; 3f7ae5560000...
47425	2003.10.01 - 15:43:57	GK-Call	Normal	3001	GK-Active...	10f57a3f-	Remove a call.
47424	2003.10.01 - 15:43:57	GK-Call	Normal	3000	GK-Active...	1df57a3f-	1065023037; 0; 1df57a3f-a22a-90bf-956f-0002a4ff42; 3f7ae5560000...
47423	2003.10.01 - 15:43:57	GK-Call	Normal	3000	GK-Active...	1cf57a3f-b...	1065023037; 0; 1cf57a3f-bca2-560f-956d-0002a4ff42; 3f7ae5560000...
47422	2003.10.01 - 15:43:56	GK-Call	Normal	3000	GK-Active...	1cf57a3f-4...	1065023036; 0; 1cf57a3f-4793-2af2-956b-0002a4ff42; 3f7ae5560000...
47421	2003.10.01 - 15:43:56	GK-Call	Normal	3000	GK-Active...	1cf57a3f-6...	1065023036; 0; 1cf57a3f-6199-4a27-9569-0002a4ff42; 3f7ae5560000...
47420	2003.10.01 - 15:43:56	GK-Call	Normal	3001	GK-Active...	11f57a3f-	Remove a call.
47419	2003.10.01 - 15:43:56	GK-Call	Normal	3000	GK-Active...	1cf57a3f-1...	1065023036; 0; 1cf57a3f-1ccc-8647-9567-0002a4ff42; 3f7ae5560000...
47418	2003.10.01 - 15:43:56	GK-Call	Normal	3001	GK-Active...	10f57a3f-	Remove a call.
47417	2003.10.01 - 15:43:56	GK-Call	Normal	3001	GK-Active...	10f57a3f-	Remove a call.

Search terms (Multiple search terms are selectable)

- Notification ID From / Notification ID To : Search with the Notification ID.
- Event Time From / Event Time To : Search with the time of the Events.
- Category : Search the events based on “GK-System, GK-Registration, GK-Call”.

Notific...	Time-Stamp	Event-Category	Event-Severity	Event-ID
44242	2003.10.01 - 15:3...	GK-System	Major	1006
38438	2003.10.01 - 15:2...	GK-Registration	Major	2001
38437	2003.10.01 - 15:21:21	GK-Registration	Major	2005
37966	2003.10.01 - 15:20:11	GK-Registration	Minor	2004
244	2003.10.01 - 14:32:15	GK-Registration	Major	2000
241	2003.10.01 - 14:32:15	GK-Registration	Minor	2112

- Severity : Search the events based on severity (Normal, Warning,

Minor, Major, Critical).

Notification ID To		Event Time From	
Severity	Code		
▼	Minor ▼		
	Critical		
	Major		
	Minor		
	Warning		
	Normal		
Event-Category	Event-Severity	Object-ID	
	Major		Management channel clo
ation	Major	3f7ae556...	Remove an endpoint
ation	Major	3f7ae556...	Endpoint will be removed
ation	Minor	3f7ae556...	No response on IRQ.
ation	Major	2000 GK-Regist...	GW; Normal; 3f7ae55600
ation	Minor	2112 GK-Regist...	<RRQ> from 172.17.202.2
ation	Major	2000 GK-Regist...	GW; Normal; 3f7ae55600

- Code : Search based on the Event-Code.
- ObjectType : Search based on the Object-Type.
- ObjectID: Search based on the Object-ID.

Search Examples

Based on Event Severity

- Search term: Warning

Category		All	Severity		Warning	Code	ObjectType	Get
ObjectID	Time-Stamp	Event-Category	Event-Severity	Event-Code	Object-Type	Object-ID	Event-Phrase	
44242	2003.10.01 - 15:35:53	GK-System	Major	1006			Management channel close with 172.17.1.104	
38438	2003.10.01 - 15:21:21	GK-Registration	Major	2001	GK-Regist...	3f7ae556	Remove an endpoint	
38437	2003.10.01 - 15:21:21	GK-Registration	Major	2005	GK-Regist...	3f7ae556	Endpoint will be removed by no response.	
37966	2003.10.01 - 15:20:11	GK-Registration	Minor	2004	GK-Regist...	3f7ae556	No response on IRQ.	
37491	2003.10.01 - 15:19:00	GK-Registration	Warning	2003	GK-Regist...	3f7ae556	No RRO within TTL.	
244	2003.10.01 - 14:32:15	GK-Registration	Major	2000	GK-Regist...	3f7ae556	GW, Normal, 3f7ae556000006, 172.17.202.211, 1720, 172.17.202.211,...	
241	2003.10.01 - 14:32:15	GK-Registration	Minor	2112	GK-Regist...	3f7ae556	<RRO> from 172.17.202.211 rejected by fullRegistrationRequired.	
149	2003.10.01 - 14:32:06	GK-Registration	Major	2000	GK-Regist...	3f7ae556	GW, Normal, 3f7ae556000005, 172.17.202.210, 1720, 172.17.202.210,...	
148	2003.10.01 - 14:32:05	GK-Registration	Minor	2112	GK-Regist...	3f7ae556	<RRO> from 172.17.202.210 rejected by fullRegistrationRequired.	
143	2003.10.01 - 14:32:04	GK-Registration	Major	2000	GK-Regist...	3f7ae556	GW, Normal, 3f7ae556000004, 172.17.202.50, 1720, 172.17.202.50, 2...	
142	2003.10.01 - 14:32:04	GK-Registration	Minor	2112	GK-Regist...	3f7ae556	<RRO> from 172.17.202.50 rejected by fullRegistrationRequired.	
140	2003.10.01 - 14:32:04	GK-Call	Warning	3100	GK-Active...	56e57a3f	<ARQ> rejected by unregistered destination (5679).	
138	2003.10.01 - 14:32:03	GK-Call	Warning	3100	GK-Active...	56e57a3f	<ARQ> rejected by unregistered destination (5679).	
136	2003.10.01 - 14:32:03	GK-Call	Warning	3100	GK-Active...	56e57a3f	<ARQ> rejected by unregistered destination (5679).	
133	2003.10.01 - 14:32:03	GK-Call	Warning	3100	GK-Active...	56e57a3f	<ARQ> rejected by unregistered destination (5679).	
131	2003.10.01 - 14:32:03	GK-Call	Warning	3100	GK-Active...	56e57a3f	<ARQ> rejected by unregistered destination (5679).	
129	2003.10.01 - 14:32:03	GK-Call	Warning	3100	GK-Active...	56e57a3f	<ARQ> rejected by unregistered destination (5679).	
127	2003.10.01 - 14:32:02	GK-Call	Warning	3100	GK-Active...	56e57a3f	<ARQ> rejected by unregistered destination (5679).	
125	2003.10.01 - 14:32:02	GK-Call	Warning	3100	GK-Active...	56e57a3f	<ARQ> rejected by unregistered destination (5679).	
123	2003.10.01 - 14:32:02	GK-Call	Warning	3100	GK-Active...	56e57a3f	<ARQ> rejected by unregistered destination (5679).	
121	2003.10.01 - 14:32:02	GK-Call	Warning	3100	GK-Active...	56e57a3f	<ARQ> rejected by unregistered destination (5679).	
118	2003.10.01 - 14:32:02	GK-Call	Warning	3100	GK-Active...	56e57a3f	<ARQ> rejected by unregistered destination (5679).	
114	2003.10.01 - 14:32:01	GK-Call	Warning	3100	GK-Active...	56e57a3f	<ARQ> rejected by unregistered destination (5679).	
112	2003.10.01 - 14:32:01	GK-Call	Warning	3100	GK-Active...	56e57a3f	<ARQ> rejected by unregistered destination (5679).	
110	2003.10.01 - 14:32:01	GK-Call	Warning	3100	GK-Active...	56e57a3f	<ARQ> rejected by unregistered destination (5679).	
108	2003.10.01 - 14:32:01	GK-Call	Warning	3100	GK-Active...	56e57a3f	<ARQ> rejected by unregistered destination (5679).	

- Search Term: Minor

Category		All	Severity		Minor	Code	ObjectType	Get
ObjectID	Time-Stamp	Event-Category	Event-Severity	Event-Code	Object-Type	Object-ID	Event-Phrase	
44242	2003.10.01 - 15:35:53	GK-System	Major	1006			Management channel close with 172.17.1.104	
38438	2003.10.01 - 15:21:21	GK-Registration	Major	2001	GK-Regist...	3f7ae556	Remove an endpoint	
38437	2003.10.01 - 15:21:21	GK-Registration	Major	2005	GK-Regist...	3f7ae556	Endpoint will be removed by no response.	
37966	2003.10.01 - 15:20:11	GK-Registration	Minor	2004	GK-Regist...	3f7ae556	No response on IRQ.	
244	2003.10.01 - 14:32:15	GK-Registration	Major	2000	GK-Regist...	3f7ae556	GW, Normal, 3f7ae556000006, 172.17.202.211, 1720, 172.17.202.211,...	
241	2003.10.01 - 14:32:15	GK-Registration	Minor	2112	GK-Regist...	3f7ae556	<RRO> from 172.17.202.211 rejected by fullRegistrationRequired.	
149	2003.10.01 - 14:32:06	GK-Registration	Major	2000	GK-Regist...	3f7ae556	GW, Normal, 3f7ae556000005, 172.17.202.210, 1720, 172.17.202.210,...	
148	2003.10.01 - 14:32:05	GK-Registration	Minor	2112	GK-Regist...	3f7ae556	<RRO> from 172.17.202.210 rejected by fullRegistrationRequired.	
143	2003.10.01 - 14:32:04	GK-Registration	Major	2000	GK-Regist...	3f7ae556	GW, Normal, 3f7ae556000004, 172.17.202.50, 1720, 172.17.202.50, 2...	
142	2003.10.01 - 14:32:04	GK-Registration	Minor	2112	GK-Regist...	3f7ae556	<RRO> from 172.17.202.50 rejected by fullRegistrationRequired.	
29	2003.10.01 - 14:31:56	GK-Registration	Major	2000	GK-Regist...	3f7ae556	GW, Normal, 3f7ae556000003, 172.17.202.201, 1720, 172.17.202.201,...	
10	2003.10.01 - 14:31:54	GK-Registration	Major	2000	GK-Regist...	3f7ae556	GW, Normal, 3f7ae556000002, 172.17.202.200, 1720, 172.17.202.200,...	
9	2003.10.01 - 14:31:54	GK-Registration	Minor	2112	GK-Regist...	3f7ae556	<RRO> from 172.17.202.200 rejected by fullRegistrationRequired.	
6	2003.10.01 - 14:31:53	GK-Registration	Major	2000	GK-Regist...	3f7ae556	GW, Normal, 3f7ae556000001, 172.17.202.100, 1720, 172.17.202.100,...	
5	2003.10.01 - 14:31:51	GK-System	Critical	1002			Gatekeeper system start service	
4	2003.10.01 - 14:31:51	GK-System	Critical	1004			Gatekeeper system stop service	
3	2003.10.01 - 14:31:51	GK-System	Critical	1002			Gatekeeper system start service	
2	2003.10.01 - 14:31:50	GK-System	Critical	1004			Gatekeeper system stop service	
1	2003.10.01 - 14:31:50	GK-System	Critical	1000			Gatekeeper system booting ...	

- Search Term: Major

Category		All	Severity		Major	Code	ObjectType	Get
ObjectID	Time-Stamp	Event-Category	Event-Severity	Event-Code	Object-Type	Object-ID	Event-Phrase	
44242	2003.10.01 - 15:35:53	GK-System	Major	1006			Management channel close with 172.17.1.104	
38438	2003.10.01 - 15:21:21	GK-Registration	Major	2001	GK-Regist...	3f7ae556	Remove an endpoint	
38437	2003.10.01 - 15:21:21	GK-Registration	Major	2005	GK-Regist...	3f7ae556	Endpoint will be removed by no response.	
244	2003.10.01 - 14:32:15	GK-Registration	Major	2000	GK-Regist...	3f7ae556	GW, Normal, 3f7ae556000006, 172.17.202.211, 1720, 172.17.202.211,...	
149	2003.10.01 - 14:32:06	GK-Registration	Major	2000	GK-Regist...	3f7ae556	GW, Normal, 3f7ae556000005, 172.17.202.210, 1720, 172.17.202.210,...	
143	2003.10.01 - 14:32:04	GK-Registration	Major	2000	GK-Regist...	3f7ae556	GW, Normal, 3f7ae556000004, 172.17.202.50, 1720, 172.17.202.50, 2...	
28	2003.10.01 - 14:31:56	GK-Registration	Major	2000	GK-Regist...	3f7ae556	GW, Normal, 3f7ae556000003, 172.17.202.201, 1720, 172.17.202.201,...	
10	2003.10.01 - 14:31:54	GK-Registration	Major	2000	GK-Regist...	3f7ae556	GW, Normal, 3f7ae556000002, 172.17.202.200, 1720, 172.17.202.200,...	
6	2003.10.01 - 14:31:53	GK-Registration	Major	2000	GK-Regist...	3f7ae556	GW, Normal, 3f7ae556000001, 172.17.202.100, 1720, 172.17.202.100,...	
5	2003.10.01 - 14:31:51	GK-System	Critical	1002			Gatekeeper system start service	
4	2003.10.01 - 14:31:51	GK-System	Critical	1004			Gatekeeper system stop service	
3	2003.10.01 - 14:31:51	GK-System	Critical	1002			Gatekeeper system start service	
2	2003.10.01 - 14:31:50	GK-System	Critical	1004			Gatekeeper system stop service	
1	2003.10.01 - 14:31:50	GK-System	Critical	1000			Gatekeeper system booting ...	

- Search Term: Critical

Category		Severity		Code		Object Type	
All		Critical					
ObjectID	Time-Stamp	Event-Category	Event-Severity	Event-Code	Object-Type	Object-ID	Event-Phrase
5	2003.10.01 - 14.31.51	GK-System	Critical	1002			Gatekeeper system start service
4	2003.10.01 - 14.31.51	GK-System	Critical	1004			Gatekeeper system stop service
3	2003.10.01 - 14.31.51	GK-System	Critical	1002			Gatekeeper system start service
2	2003.10.01 - 14.31.50	GK-System	Critical	1004			Gatekeeper system stop service
1	2003.10.01 - 14.31.50	GK-System	Critical	1000			Gatekeeper system booting ...

Based on multiple search terms

- Search Terms: "GK-Call" & "Warning"

Category		Severity		Code		Object Type	
GK-Call		Warning					
ObjectID	Time-Stamp	Event-Category	Event-Severity	Event-Code	Object-Type	Object-ID	Event-Phrase
140	2003.10.01 - 14.32.04	GK-Call	Warning	3100	GK-Active...	56e57a3f...	<ARQ> rejected by unregistered destination (5679).
136	2003.10.01 - 14.32.03	GK-Call	Warning	3100	GK-Active...	56e57a3f...	<ARQ> rejected by unregistered destination (5679).
133	2003.10.01 - 14.32.03	GK-Call	Warning	3100	GK-Active...	56e57a3f...	<ARQ> rejected by unregistered destination (5679).
131	2003.10.01 - 14.32.03	GK-Call	Warning	3100	GK-Active...	56e57a3f...	<ARQ> rejected by unregistered destination (5679).
129	2003.10.01 - 14.32.03	GK-Call	Warning	3100	GK-Active...	56e57a3f...	<ARQ> rejected by unregistered destination (5679).
127	2003.10.01 - 14.32.02	GK-Call	Warning	3100	GK-Active...	56e57a3f...	<ARQ> rejected by unregistered destination (5679).
125	2003.10.01 - 14.32.02	GK-Call	Warning	3100	GK-Active...	56e57a3f...	<ARQ> rejected by unregistered destination (5679).
123	2003.10.01 - 14.32.02	GK-Call	Warning	3100	GK-Active...	56e57a3f...	<ARQ> rejected by unregistered destination (5679).
121	2003.10.01 - 14.32.02	GK-Call	Warning	3100	GK-Active...	56e57a3f...	<ARQ> rejected by unregistered destination (5679).
118	2003.10.01 - 14.32.02	GK-Call	Warning	3100	GK-Active...	56e57a3f...	<ARQ> rejected by unregistered destination (5679).
114	2003.10.01 - 14.32.01	GK-Call	Warning	3100	GK-Active...	56e57a3f...	<ARQ> rejected by unregistered destination (5679).
112	2003.10.01 - 14.32.01	GK-Call	Warning	3100	GK-Active...	56e57a3f...	<ARQ> rejected by unregistered destination (5679).
110	2003.10.01 - 14.32.01	GK-Call	Warning	3100	GK-Active...	56e57a3f...	<ARQ> rejected by unregistered destination (5679).
108	2003.10.01 - 14.32.01	GK-Call	Warning	3100	GK-Active...	56e57a3f...	<ARQ> rejected by unregistered destination (5679).
106	2003.10.01 - 14.32.00	GK-Call	Warning	3100	GK-Active...	56e57a3f...	<ARQ> rejected by unregistered destination (5679).
104	2003.10.01 - 14.32.00	GK-Call	Warning	3100	GK-Active...	56e57a3f...	<ARQ> rejected by unregistered destination (5679).
99	2003.10.01 - 14.32.00	GK-Call	Warning	3100	GK-Active...	56e57a3f...	<ARQ> rejected by unregistered destination (5679).
97	2003.10.01 - 14.32.00	GK-Call	Warning	3100	GK-Active...	56e57a3f...	<ARQ> rejected by unregistered destination (5679).
94	2003.10.01 - 14.32.00	GK-Call	Warning	3100	GK-Active...	56e57a3f...	<ARQ> rejected by unregistered destination (5679).
92	2003.10.01 - 14.32.00	GK-Call	Warning	3100	GK-Active...	56e57a3f...	<ARQ> rejected by unregistered destination (5679).
90	2003.10.01 - 14.32.00	GK-Call	Warning	3100	GK-Active...	56e57a3f...	<ARQ> rejected by unregistered destination (5679).
85	2003.10.01 - 14.31.58	GK-Call	Warning	3100	GK-Active...	53e57a3f...	<ARQ> rejected by unregistered destination (5679).
83	2003.10.01 - 14.31.58	GK-Call	Warning	3100	GK-Active...	53e57a3f...	<ARQ> rejected by unregistered destination (5679).
81	2003.10.01 - 14.31.58	GK-Call	Warning	3100	GK-Active...	53e57a3f...	<ARQ> rejected by unregistered destination (5679).
78	2003.10.01 - 14.31.58	GK-Call	Warning	3100	GK-Active...	53e57a3f...	<ARQ> rejected by unregistered destination (5679).

- Search Terms: "GK-Registration" & "Major"

Category		Severity		Code		Object Type	
GK-Registration		Major					
ObjectID	Time-Stamp	Event-Category	Event-Severity	Event-Code	Object-Type	Object-ID	Event-Phrase
38438	2003.10.01 - 15.21.21	GK-Registration	Major	2001	GK-Regist...	3f7ae556...	Remove an endpoint
38437	2003.10.01 - 15.21.21	GK-Registration	Major	2005	GK-Regist...	3f7ae556...	Endpoint will be removed by no response.
244	2003.10.01 - 14.32.15	GK-Registration	Major	2000	GK-Regist...	3f7ae556...	GW, Normal; 3f7ae56000006; 172.17.202.211, 1720, 172.17.202.211, ...
149	2003.10.01 - 14.32.06	GK-Registration	Major	2000	GK-Regist...	3f7ae556...	GW, Normal; 3f7ae56000005; 172.17.202.210, 1720, 172.17.202.210, ...
143	2003.10.01 - 14.32.04	GK-Registration	Major	2000	GK-Regist...	3f7ae556...	GW, Normal; 3f7ae56000004; 172.17.202.50, 1720, 172.17.202.50, 2...
29	2003.10.01 - 14.31.56	GK-Registration	Major	2000	GK-Regist...	3f7ae556...	GW, Normal; 3f7ae56000003; 172.17.202.201, 1720, 172.17.202.201, ...
10	2003.10.01 - 14.31.54	GK-Registration	Major	2000	GK-Regist...	3f7ae556...	GW, Normal; 3f7ae56000002; 172.17.202.200, 1720, 172.17.202.200, ...
6	2003.10.01 - 14.31.53	GK-Registration	Major	2000	GK-Regist...	3f7ae556...	GW, Normal; 3f7ae56000001; 172.17.202.100, 1720, 172.17.202.100, ...

- Search Terms: "GK-System" & "Minor"

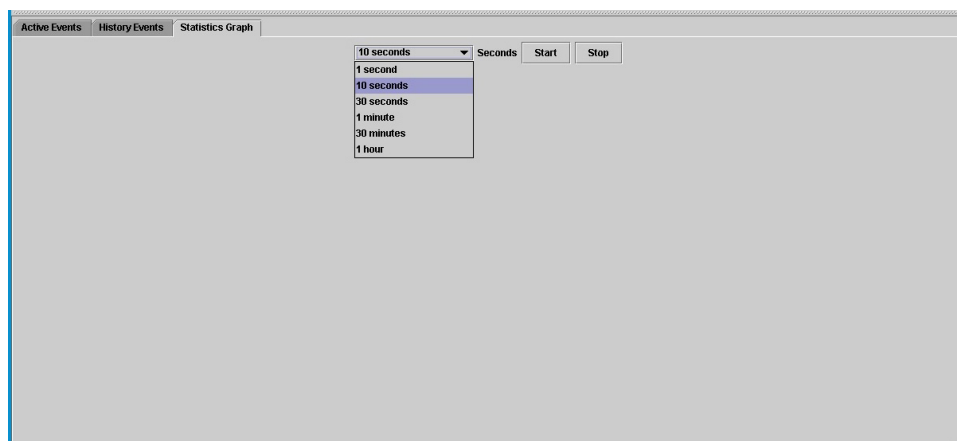
Category		Severity		Code		Object Type	
GK-System		Minor					
ObjectID	Time-Stamp	Event-Category	Event-Severity	Event-Code	Object-Type	Object-ID	Event-Phrase
44242	2003.10.01 - 15.35.53	GK-System	Minor	1006			Management channel close with 172.17.1.104
5	2003.10.01 - 14.31.51	GK-System	Minor	1002			Gatekeeper system start service
4	2003.10.01 - 14.31.51	GK-System	Minor	1004			Gatekeeper system stop service
3	2003.10.01 - 14.31.51	GK-System	Minor	1002			Gatekeeper system start service
2	2003.10.01 - 14.31.50	GK-System	Minor	1004			Gatekeeper system stop service
1	2003.10.01 - 14.31.50	GK-System	Minor	1000			Gatekeeper system booting ...

Status Information

- Notification ID : The unique ID of the events according to the time.
- Time-Stamp : Indicates the time of the Events.
- Event-Category : Indicates the category of the Events.
- Event-Severity : Indicates the severity of the Events with specific colors.
- Event-Code : Shows the code of the Event-Category.
- Object-type : Shows the Object Type.
- Object-ID : Shows the Object-ID.
- Event-Phrase : Shows the detailed information of the Events.

Statistics Graph

It displays the real-time active call information of the registered devices.



The user can set the refresh time based on 1 sec, 10 sec, 30 sec, 1 min, 30 min, 1 hour. Also, the user can choose to start or stop displaying with “Start, Stop” buttons.

At the below image, 5 devices are registered at the GateKeeper and 37 calls are active. “x-axis” indicates “time” and “y-axis” means “numbers”.

