

AP-TAS Series Product 3G Interworking Call Scenario with AP-SAD100 Android Door Phone Appl.

AP-TAS series video door phone
supporting IP-PBX registration
function for private IP environment



AddPac

AddPac Technology

2014, Sales and Marketing

Contents

- AP-SAD100 Android Door Phone Appl. Overview
- AP-TAS Series Product Overview
- AP-TAS Product Interworking with AP-SAD100
 - Network Service Diagram (Local LAN, 3G)
 - SIP Register Diagram (3G)
 - SIP Video Call Flow Diagram (3G)
- AP-SAD100 UI Design
- AP-SAD100 Setting and Configuration

Smart Door Phone (Android App.)







AP-SAD100 Overview

- It supports receiving a video call from door side video door phone by visitor.
- It supports opening the door optionally with password.
- It supports making a video call to door side video door phone to see door side.
- It supports unidirectional video stream from door phone or bidirectional video stream to door phone optionally.
- It supports standard based SIP signaling protocol.
- It supports below voice and video codecs
 - Voice Codec : G.711ulaw/alaw, G.726
 - Video Codec : H.264, MPEG4



Time & Attendance SIP Video Door Phone Overview

Time & Attendance SIP Door Phone Comparison Table

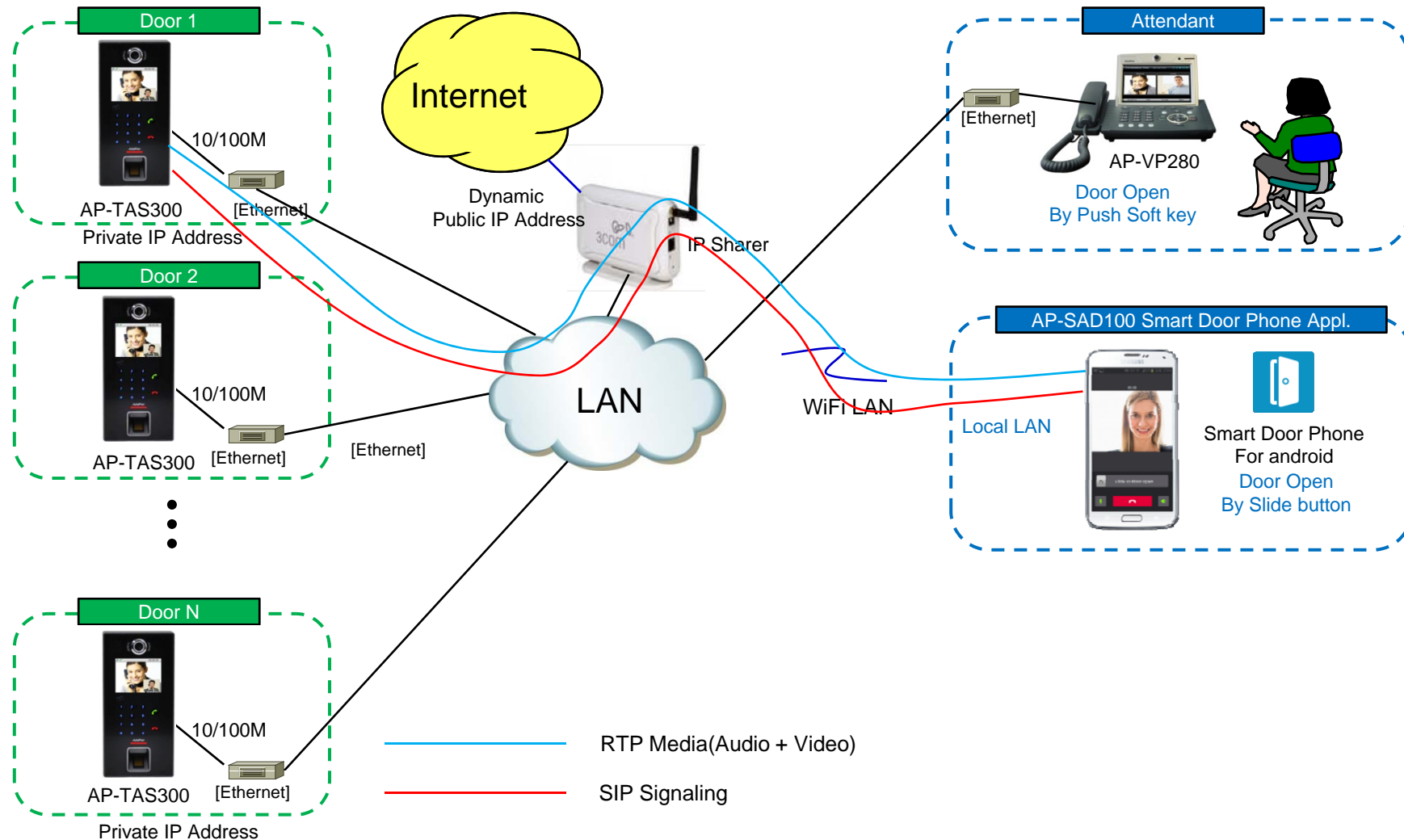
Model	AP-TAS300	AP-TAS300N	AP-TAS200	AP-TAS100
Service Features				
Time & Attendance	Support	Support	Support	Support
SIP Door Phone	Video	Video	Voice	Video
Duplex (Voice)	Full Duplex	Full Duplex	Full Duplex	Full Duplex
Key Pad	One(1) Call Button	3 x 4 Key	One(1) Call Button	3 x 4 Key
LCD	3.5 inch LCD	3.5 inch LCD	3.5 inch LCD	3.5 inch LCD
RF Card	Support	Support	Support	Support
Fingerprint	Support	Support	Support	N/A
Camera Sensor	SD(VGA)	SD(VGA)	N/A	SD(VGA)
Video Codec	SD, H.264/MPEG4	SD, H.264/MPEG4	N/A	SD, H.264/MPEG4
Voice Codec	G.711,G722(option)	G.711,G722(option)	G.711, G.722(option)	G.711,G722(option)
Signaling	SIP	SIP	SIP	SIP
MIC & Speaker Phone	Support	Support	Support	Support
LAN Port	1	1	1	1
PoE(Optional)	Support	Support	Support	Support

Product Overview

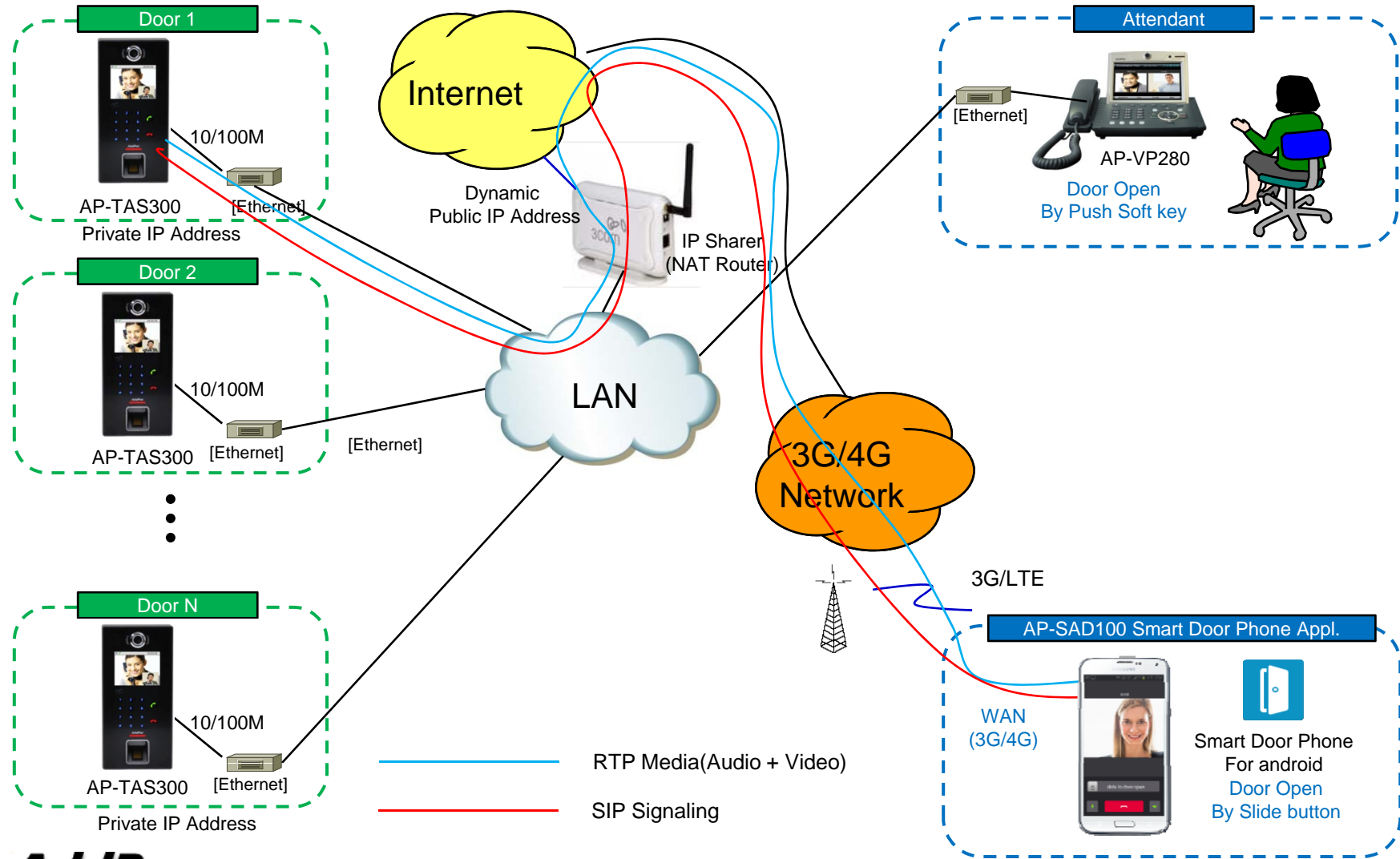
(Ex : AP-TAS300)

- Smart Time & Attendance IP Video Door Phone Solution
- High Performance SIP Video Door Phone Solution
- Video Camera, Video Call Button, TFT Color LCD, Internal MIC & Speaker
- High Quality 3.5 Inch LCD, 320 x 240 Video Resolution
- Fingerprint Recognition Support
- RF Card Support
- SIP VoIP Signaling Stack Embedded
- High-performance Video/Voice Codec Support
 - H.264/MPEG4, G.711, etc
- One(1) 10/100Mbps Fast Ethernet
- PoE(Power over Ethernet) Support
- High Quality Speaker Phone Features
- Powerful Acoustic Echo Canceller Chip Embedded
- Powerful Network Protocols (PPPoE, DHCP, Static Routing, etc)
- Firmware Upgradeable Architecture
- Advanced Voice QoS Mechanism

AP-SAD100 Network Service Diagram (Local LAN Environment)

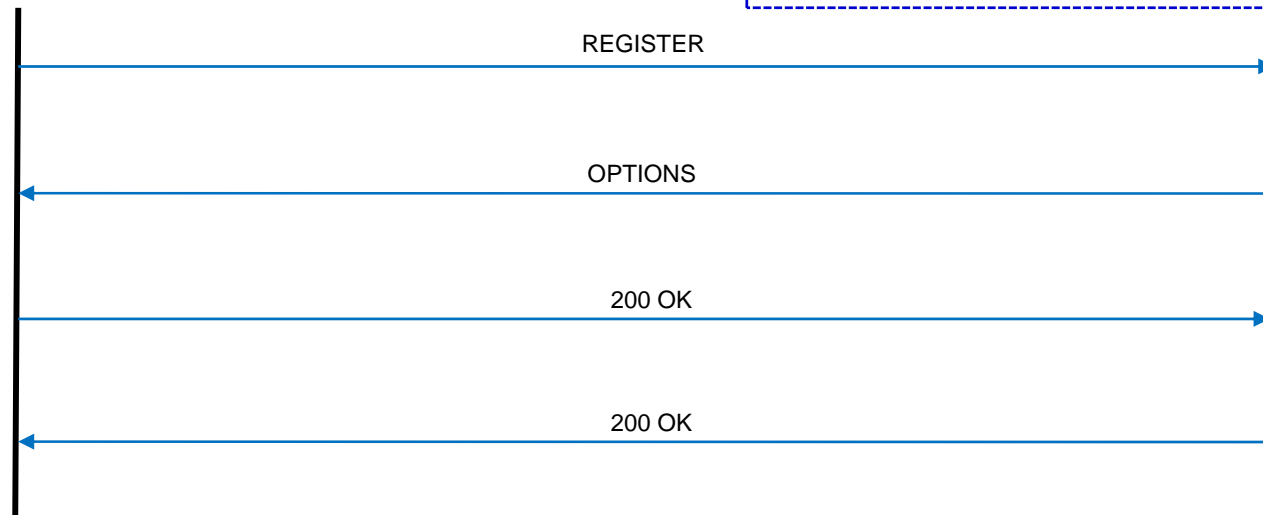
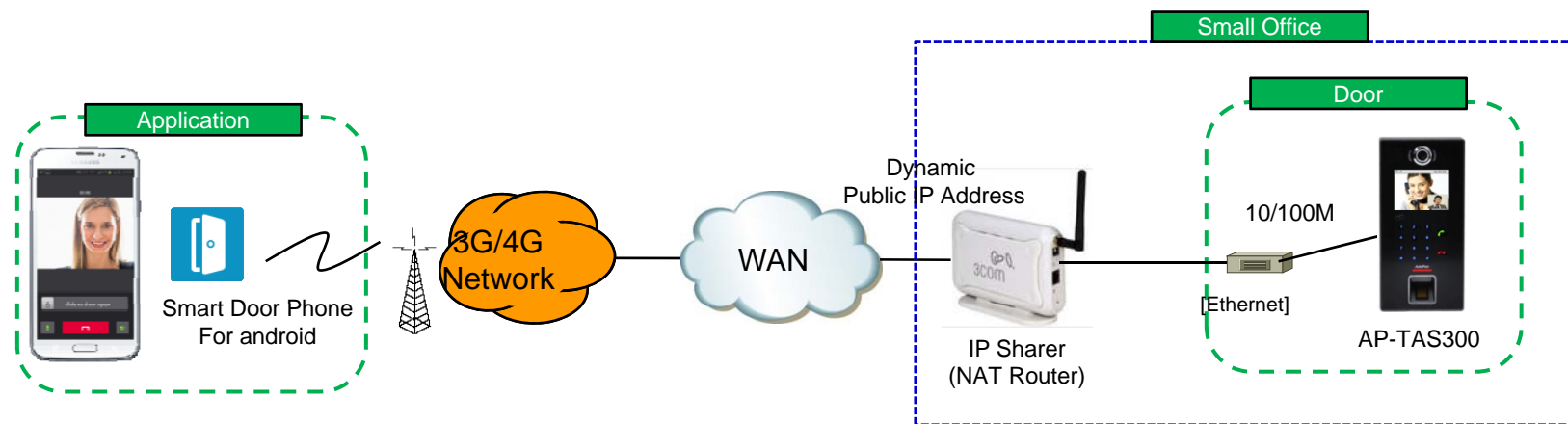


AP-SAD100 Network Service Diagram (3G/4G Environment)



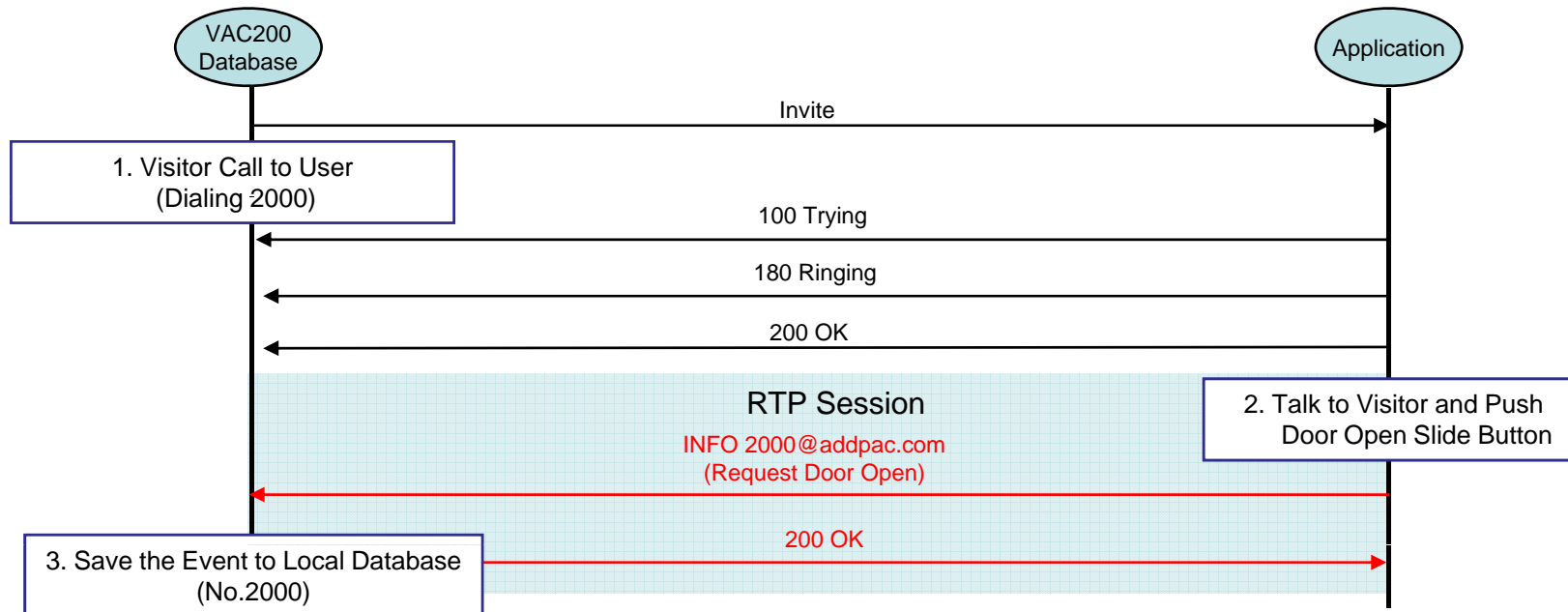
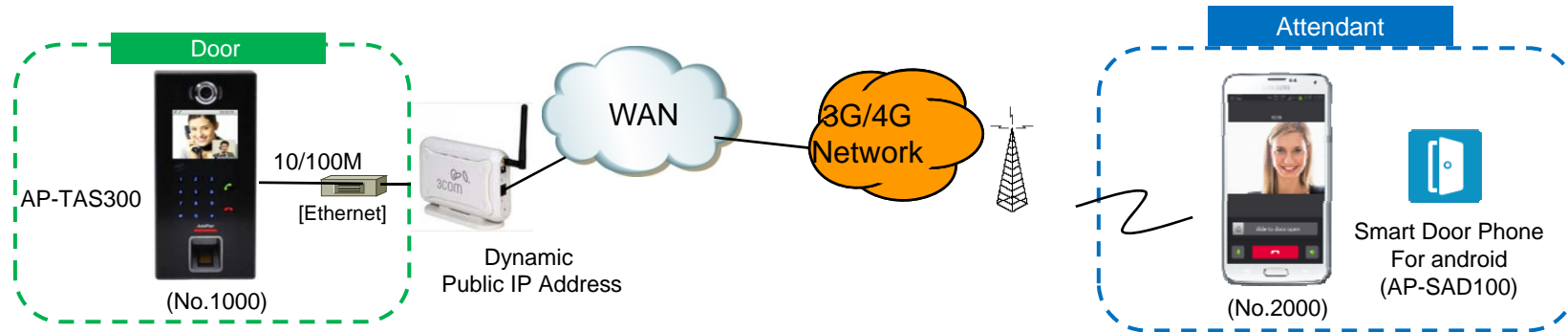
SIP Register

Smart Door Phone Application Register to AP-TAS300 Video Door Phone



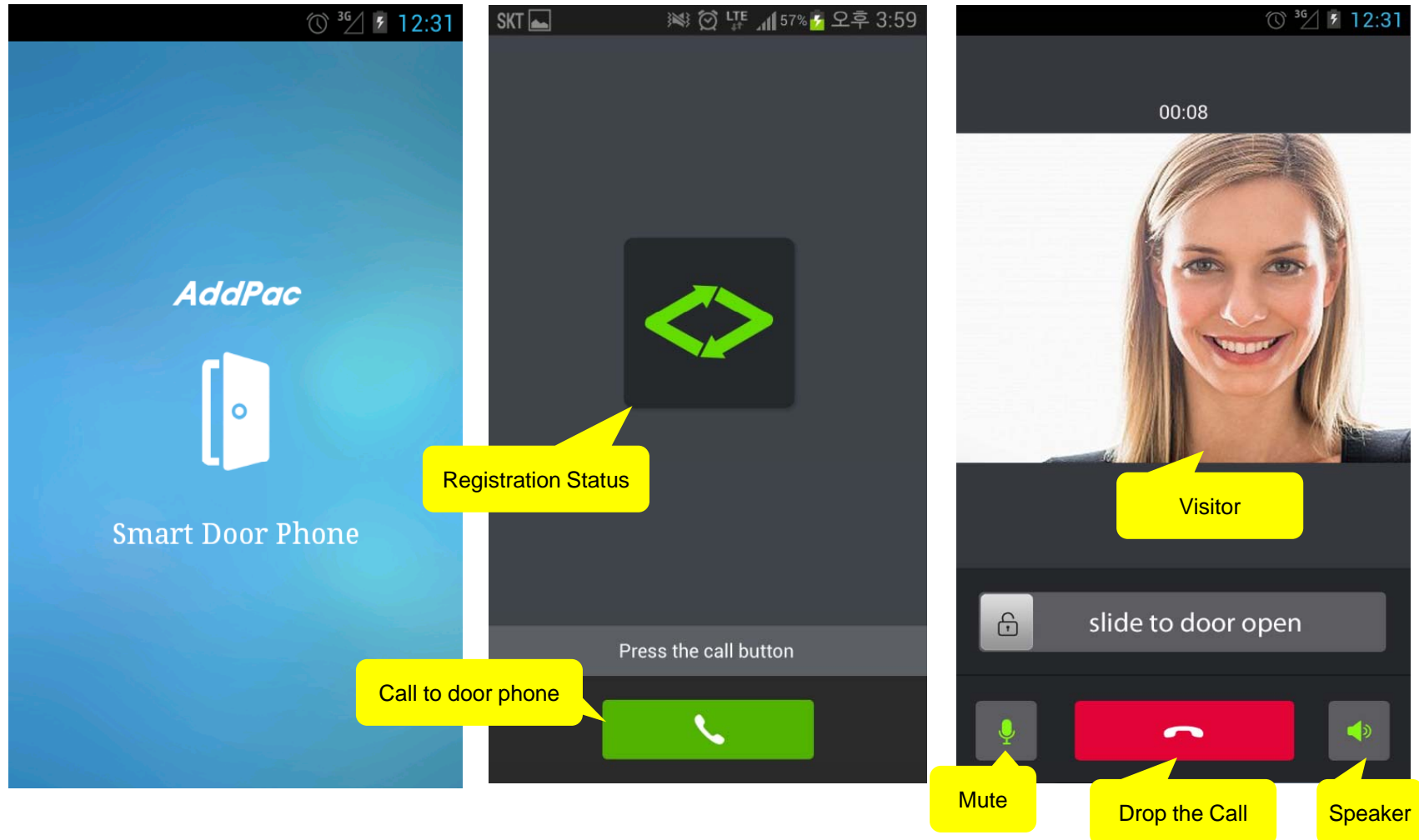
SIP Video Call Flow

Door Open Flow



Smart Door Phone App.

Main screen (portrait)

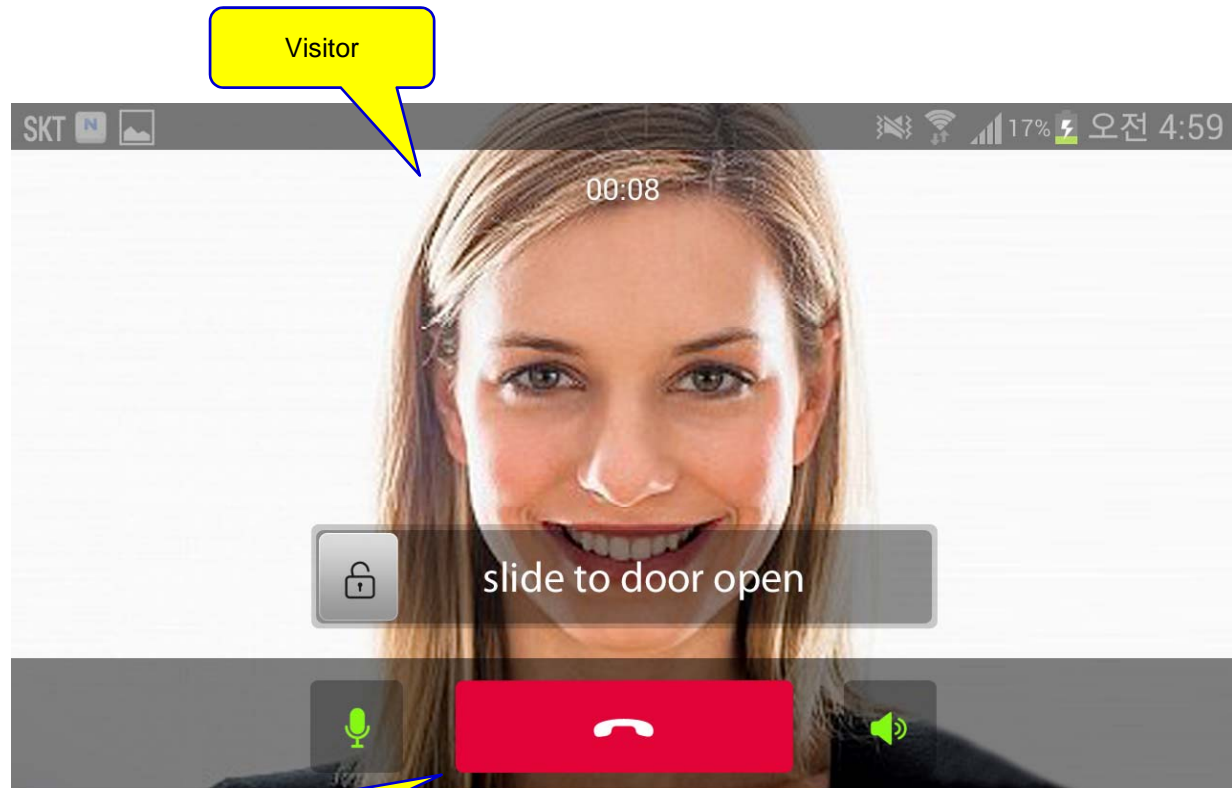
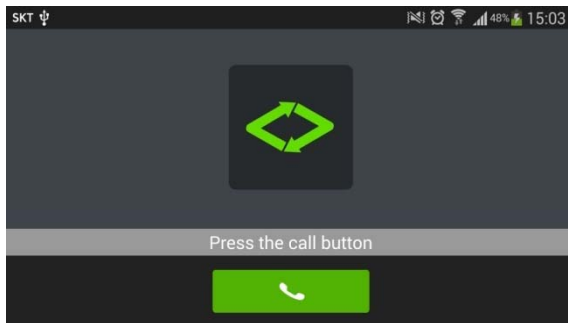
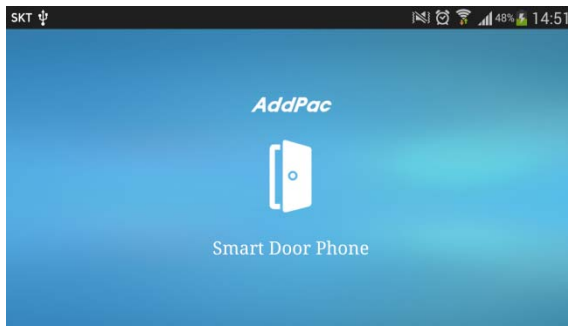


AddPac

www.addpac.com

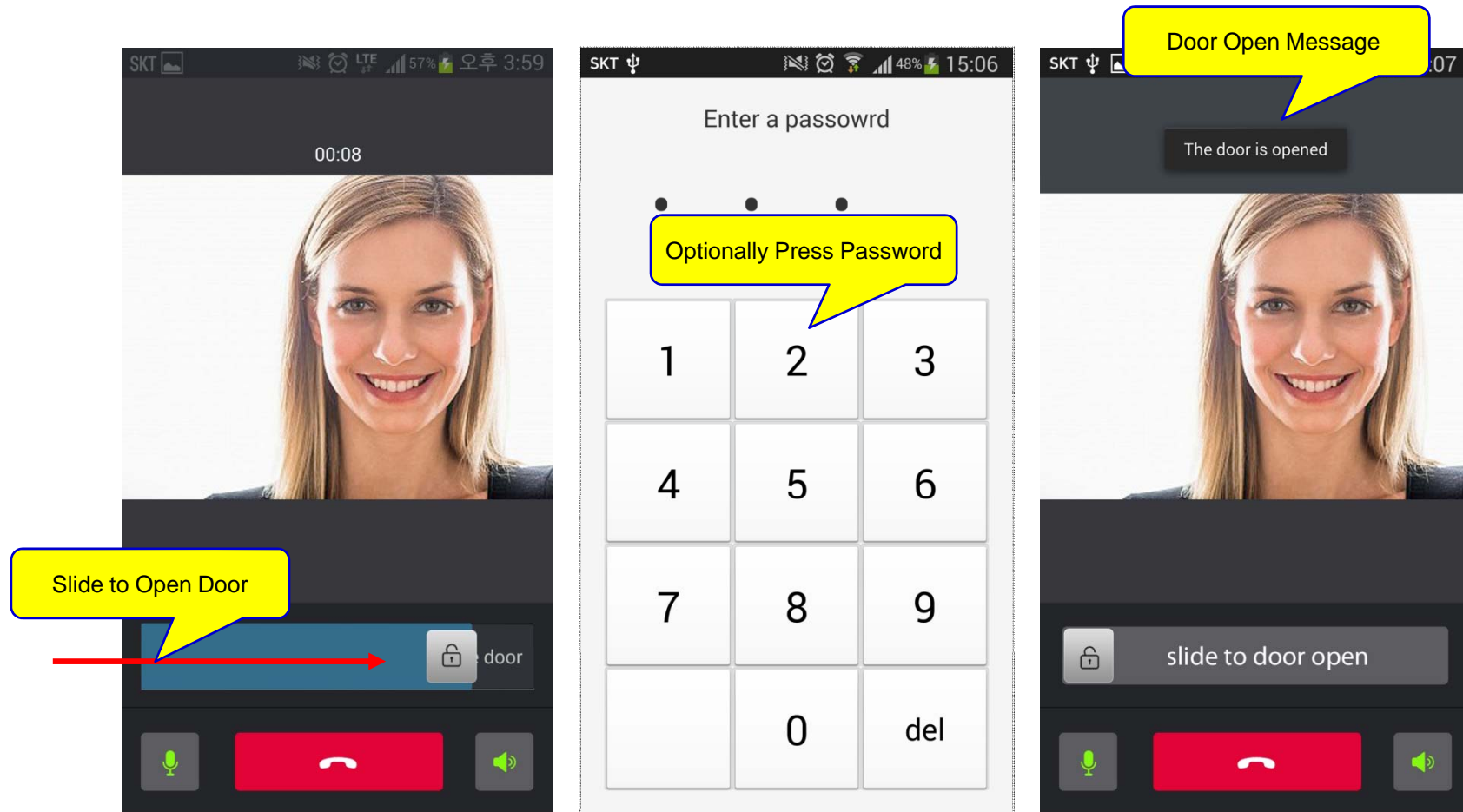
Smart Door Phone App.

Main screen (landscape)



Smart Door Phone App.

Main screen (open the door)



Smart Door Phone App.

Application Settings

Preferences

Basic setting

Server IP
Set up Server IP and account information for connecting the door

Alarm
Set up an alarm-tone when you receive the signal from the door

Outgoing Call Number
Set up a Number of Outgoing Call

Door Open Code
Set up a door open key code (default: 1)

Password OFF
Set up the password to open the door

Show my video OFF
Set up a my video to show

Timer
Set up an end-timer for talking

Network setting

Advanced Settings

SIP SETTINGS

Enable SIP Ping OFF
Periodically Ping to SIP Proxy server for keep alive or persistency under NAT

Ping Timer
Default is 30 seconds

Registration Keep Alive Timer
Default is 60 seconds

AUDIO

Advanced Audio Quality Settings OFF
Apply Advanced Audio Quality Settings

Audio Codec
Set up audio codec

VIDEO

Advanced Video Quality Settings OFF
Apply Advanced Video Quality Settings

Video Codec
Set up video codec



Thank you!

AddPac Technology Co., Ltd.
Sales and Marketing

Phone +82.2.568.3848 (KOREA)

FAX +82.2.568.3847 (KOREA)

E-mail : sales@addpac.com