

AP-VP280 Caller ID Always Display in Call Connected Mode (Video Door Phone Interworking)



AddPac

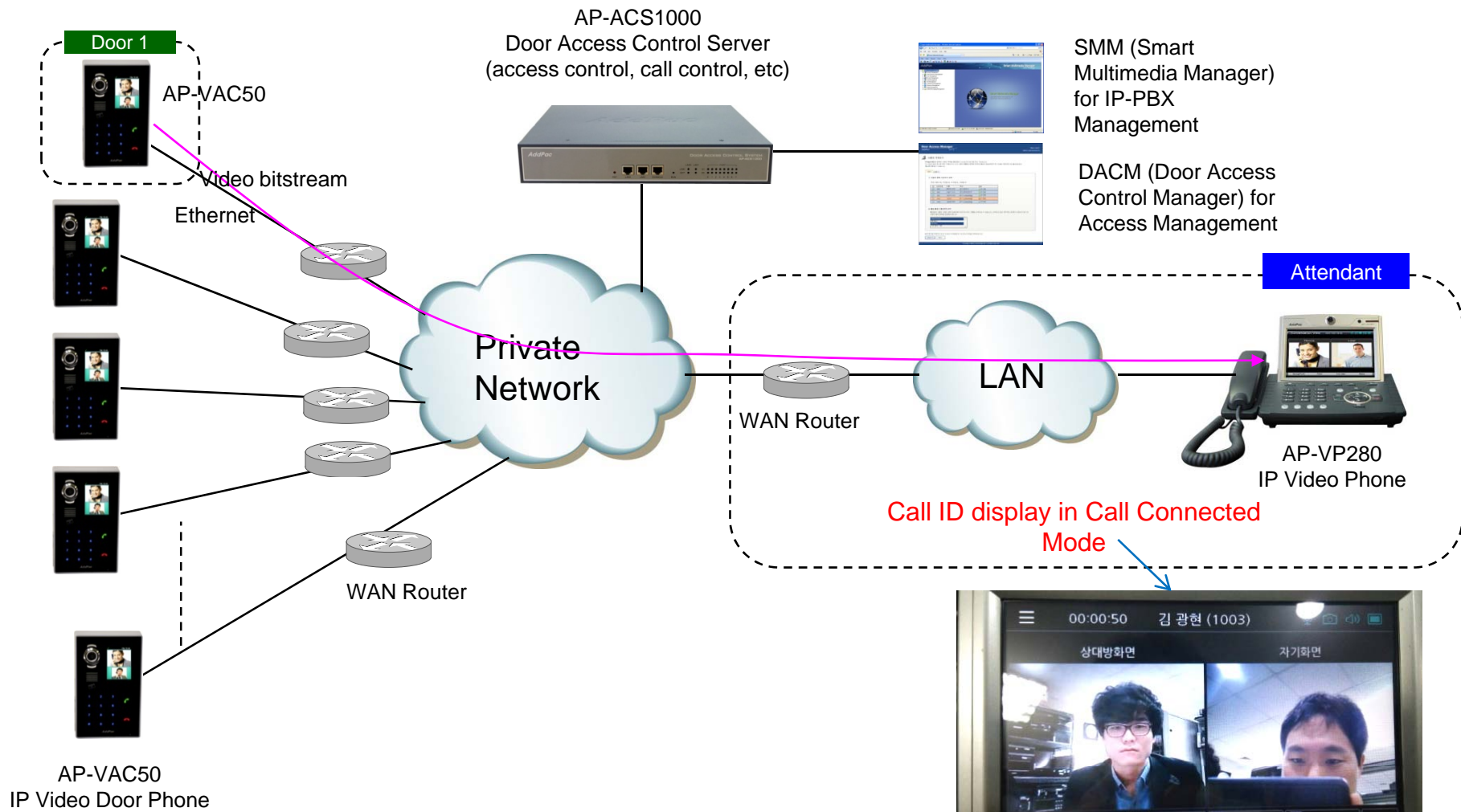
AddPac Technology

2015, Sales and Marketing

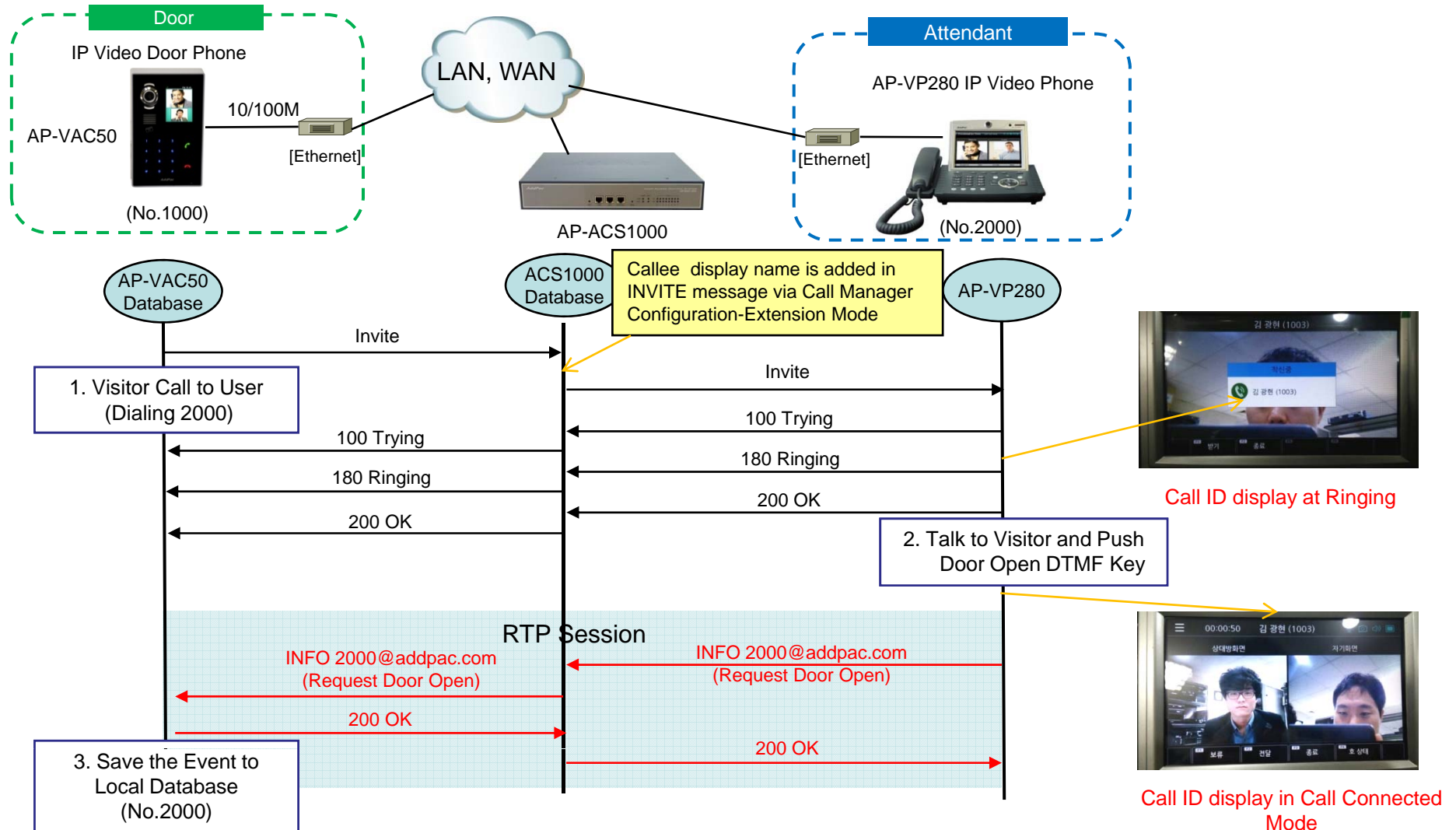
Contents

- IP Video Phone Service Diagram
- SIP Call Flow Between Video Door Phone and Video Phone
- Call Manager Configuration –Extension
(Door Access Control System, AP-ACS1000)

Network Diagram



SIP Video Call Flow



Call Manager Configuration - Extensions

The screenshot shows the 'Smart Multimedia Manager' web interface. The 'Extensions' section is active, displaying a table of user extensions. A red dashed box highlights the table, and a red arrow points from it to a yellow callout box.

	Modify	Delete	User Portal	Extension Number	Type	Name	Date Created
1				1007	User Extension	이 대호	2014-09-11 06:42:07
2				1000	User Extension	황 재균	2014-11-21 00:30:36
3				1002	User Extension	이 상균	2014-11-21 02:51:28
4				1003	User Extension	김 광현	2014-11-21 06:29:15
5				1004	User Extension	이 대은	2014-11-21 06:29:50
6				1005	User Extension	김 현수	2015-07-01 02:53:22

Call Manager Configuration - Extensions Mode
- Support UTF-8 Type Language like as Korean

Video Phone Series

Thank you!

AddPac Technology Co., Ltd.
Sales and Marketing

Phone +82.2.568.3848 (KOREA)

FAX +82.2.568.3847 (KOREA)

E-mail : sales@addpac.com