

AP3100P Mid-Range VoIP Gateway High-performance, Compact Design



VoiceFinder AP3100P Mid-Range VoIP Gateway

VoiceFinder AP3100P Mid-Range VoIP Gateway provides high-performance Voice over IP (VoIP) solution including IP-routing services for large enterprise and government. This VoiceFinder AP3100P Mid-Range VoIP Gateway maintains best voice quality under low speed network traffic using the latest voice compression algorithm and enhanced QoS management features of AddPac Technologies.

In addition, AP3100P Mid-Range VoIP Gateway can be used in various network environments such as leased line, ADSL, and Cable Modem networking with fixed IP and dynamic IP environments. And VoiceFinder AP3100P VoIP gateway supports various network protocols such as IP-routing, bridging, PPP, NAT/PAT, and network management features such as SNMP MIB v2, Cisco-style CLI, web, etc. This VoIP gateway typically is designed using high-performance RISC microprocessor architecture with fixed network interface configuration: 1-Port 10Mbps Ethernet, 1-Port 10/100Mbps Fast Ethernet, asynchronous serial port for console.

APOS Internetworking Software for AP VoIP Gateway

AddPac VoiceFinder Operating System (APOS) is a best VoIP gateway and router software to provide scalability, reliability, stability, and QoS for internetworking solutions. APOS also provides optimized performance and industry standard network functionality with easy-to-use, easy-to-installation, and maintenance.

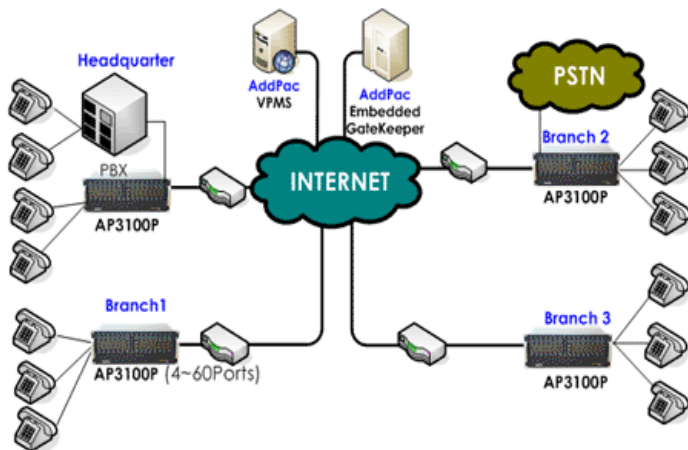
The AP3100P Mid-Range VoIP Gateway provides **best price-performance ratio** and **effective voice & data networking solution** for customer satisfaction.

AddPac

Product Highlights

- Powerful RISC Microprocessor Architecture
- One 10/100Mbps Ethernet for WAN and One(1) 10/100Mbps Fast Ethernet for LAN with Fifteen(15) Voice Interface Modules
- FXS, FXO, and E&M Voice Modules for up to Sixty(60) Voice Channels
- Standard High-performance VoIP Gateway for Voice Networking Applications
- Multi-protocol Routing Solutions between WAN and LAN Access with H.323 based VoIP Protocol
- ITU-T H.323 v3 VoIP Protocol with ITU-T H.23 Security Feature
- SIP protocol support compliant with IETF RFC3261 (or RFC2543)
- H.323 and SIP dual stack support
- G.723.1, G.729A, G.711 Voice Compression
- Support Voice Processing Features
 - VAD, DTMF, CNG, G.168, and T.38 G3 Fax Relay
- AddPac APOS Internetworking Software to provide Scalability, Functionality, Stability and QoS Control for AddPac VoIP Gateway
- High-performance IP-Routing Capability with Reliability
- Static, RIP v1/2, and IEEE 802.1Q VLAN Routing Protocols
- Traffic Queuing, and SNMP MIB v2 for Network Management Features
- Standard & Extended Access List for Security Functions
- Enhanced QoS Managements for Voice Traffic
- Essential Scalability Features such as DHCP Server & Relay, NAT/PAT, IEEE Transparent Bridging, IP Accounting, and Debugging/Diagnostics, etc.
- Remote Software Upgrade using FTP & TFTP
- Cisco Style Command Line Interface (CLI)

Network Diagram Using AP3100P Mid-Range VoIP



Hardware Specification

Microprocessor

- CPU PowerPC RISC Microprocessor

Memory

- Flash Memory 4/8Mbyte
- Main Memory 32M/64M High-Speed SDRAM
- Boot Memory 512Kbyte Flash Memory

Network Interface

- Fixed LAN0 Port One(1) 10/100Mbps Ethernet
- Fixed LAN1 Port One(1) 10/100Mbps Ethernet
- Voice Interface Slot Fifteen(15) Voice Interface Slots
- Console Port One(1) RS-232C Interface

Voice Interface Modules

- FXS Voice Module 4-Port FXS Voice Interface Module
- FXO Voice Module 4-Port FXO Voice Interface Module
- E&M Voice Module 4-Port E&M Voice Interface Module
- FXS & FXO Voice Module 2-Port FXS & 2-Port FXO Module

Power & Operation Environments

- Power Requirement VAC 110~220V, 50/60Hz, 20Watt
- Operating Temperature 0°C to + 50°C (32° to 122°F)
- Storage Temperature -40°C to + 85°C (-40° to 185°F)
- Relative Humidity 5% to 95% (Non-condensing)
- embedded Dual PSU modules for power redundancy

Dimensions

- H X W X D (mm) 178mm X 435mm X 260mm

Support Protocols & Services

IP Routing Protocols

- Static and default Routing
- IEEE 802.1Q VLAN Routing

WAN Protocols

- Point-to-Point over Ethernet Protocol (PPPoE) for ADSL
- Frame-Relay PVC with Inverse ARP
- Dynamic Host Configuration Protocol Networking (DHCP)

Voice over IP Service

- ITU-T H.323 v3 VoIP Protocol with ITU-T H.235 Security Feature
- SIP protocol support compliant with IETF RFC3261 (or RFC2543)
- H.323 and SIP dual stack support

- G.723.1, G.729.A, G.711 Voice Compressions
- Voice Processing Features Supports
 - VAD, DTMF, CNG, G.168 and T.38 G3 FAX Relay
- ITU-T H.323 Gateway, Gatekeeper Support
- Enhanced QoS Management Features for Voice Traffics

Network Managements

- Traffic Queuing and Frame-Relay Flow Control
- Standard SNMP Agent (MIB v2) Support
- Remote Management using Console, Rlogin, Telnet
- Web based Managements using HTTP Server Interface

Security Functions

- Standard & Extended IP Access List
- Access Control and Data Protections
- Enable/Disable for Specific Protocols
- Multi-Level User Account Management
- Auto-disconnect for Telnet/Console Sessions
- PPP User Authentication Supports
 - Password Authentication Protocol (PAP)
 - Challenge Handshake Authentication Protocol (CHAP)

Operation & Managements

- System Performance Analysis for Process, CPU, Connection I/F
- Configuration Backup & Restore for APOS Managements
- Debugging, System Auditing, and Diagnostics Support
- System Booting and Auto-rebooting with Watchdog Feature
- System Managements with Data Logging
- IP Traffic Statistics with Accounting

Other Scalability Features

- DHCP Server & Relay Functions
- Network Address Translation (NAT) Function
- Port Address Translation (PAT) Function
- Transparent Bridging (IEEE Standard) Function
 - Spanning Tree Bridging Protocol Support
 - Remote Bridging Support
 - Concurrent Routing and Bridging Support
- Cisco Style Command Line Interface (CLI)
- Load Balancing Support
- Network time Protocol (NTP) Support
- Remote Upgrade for APOS Management using FTP/TFTP

Ordering Information

- AP3100P-01 : AP3100P Mid-Range VoIP Gateway Standard configuration
 - One(1) Fast Ethernet, One(1) Ethernet, Console
 - PowerPC RISC CPU, 4MB Flash, 32MB SDRAM
 - APOS v5.xx with Operation Manual
 - Including CAB-LAN, CAB-CON
- AP3100P-FXS4 : 4 Port FXS Interface Module
- AP3100P-FXO4 : 4 Port FXO Interface Module
- AP3100P-FXS2FXO : 2 Port FXS & 2 Port FXO Interface Module
- AP3100P-E&M4 : 4 Port E&M Interface Module
- CAB-LAN : RJ45 Ethernet Cable

Contact Information

Web site : <http://www.addpac.com>

E-mail : info@addpac.com

AddPac Technology Co., Ltd.

3F, Jeong-Am Bldg., 769-12, Yeoksam-Dong

Kangnam-Gu, Seoul, 135-080, KOREA

Phone +82 2 568 3848

Fax + 82 2 568 3847

2000, AddPac is a registered trademark of AddPac Technology. Specifications and features subject to change without notice. All brands & products are trademarks of their respective organization.