



# AP2370

## 24 Port E&M + 1 E1

# VoIP Gateway

High Performance VoIP Gateway Solution

24 Port E&M + 1E1  
Product Config. Overview



# **AddPac**

## AddPac Technology

Sales and Marketing

[www.addpac.com](http://www.addpac.com)

# Contents

- Product Overview
- Hardware Specification
- APOS Technology
- VoIP (Voice over IP) service
- Advanced QoS Features
- Network Protocols
- Network Management
- Security Management
- Application Service
- Ordering Information

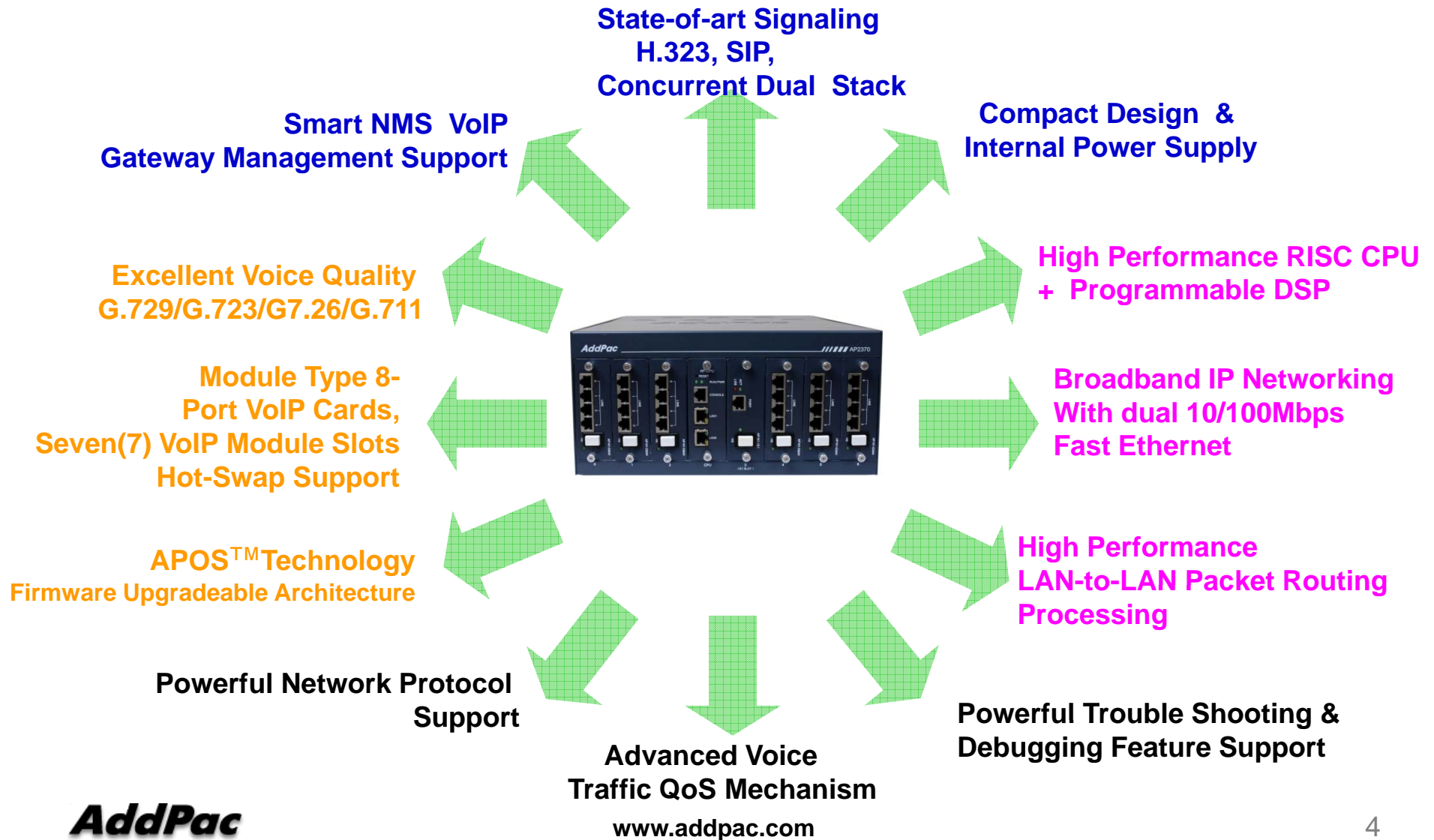
# Product Overview

## AP2370 Large Capacity VoIP Gateway

- H.323/SIP Dual Concurrent Stack Embedded
- High Performance RISC & Programmable DSP Architecture
- Seven(7) VoIP Module Slots : 8-Port VoIP Module
- Maximum 56-Port Analog VoIP Interface (FXS, FXO)
- Maximum 28-Port E&M VoIP Interface (E&M)
- Two(2) 10/100Mbps Fast Ethernet (IP Share ,etc)
- High Performance LAN-to-LAN Routing Capability
- G.711/G.726/G.723/G.729, T.38 Fax , VAD, etc
- Powerful Network Protocols (PPPoE, DHCP, Static Routing, etc)
- Firmware Upgradeable Architecture
- Smart NMS for Large Scale Deployment
- Smart Web Manager for Management
- Advanced Voice QoS Mechanism
- Compact Design with Internal Power Supply
  - Default : AC Power Supply

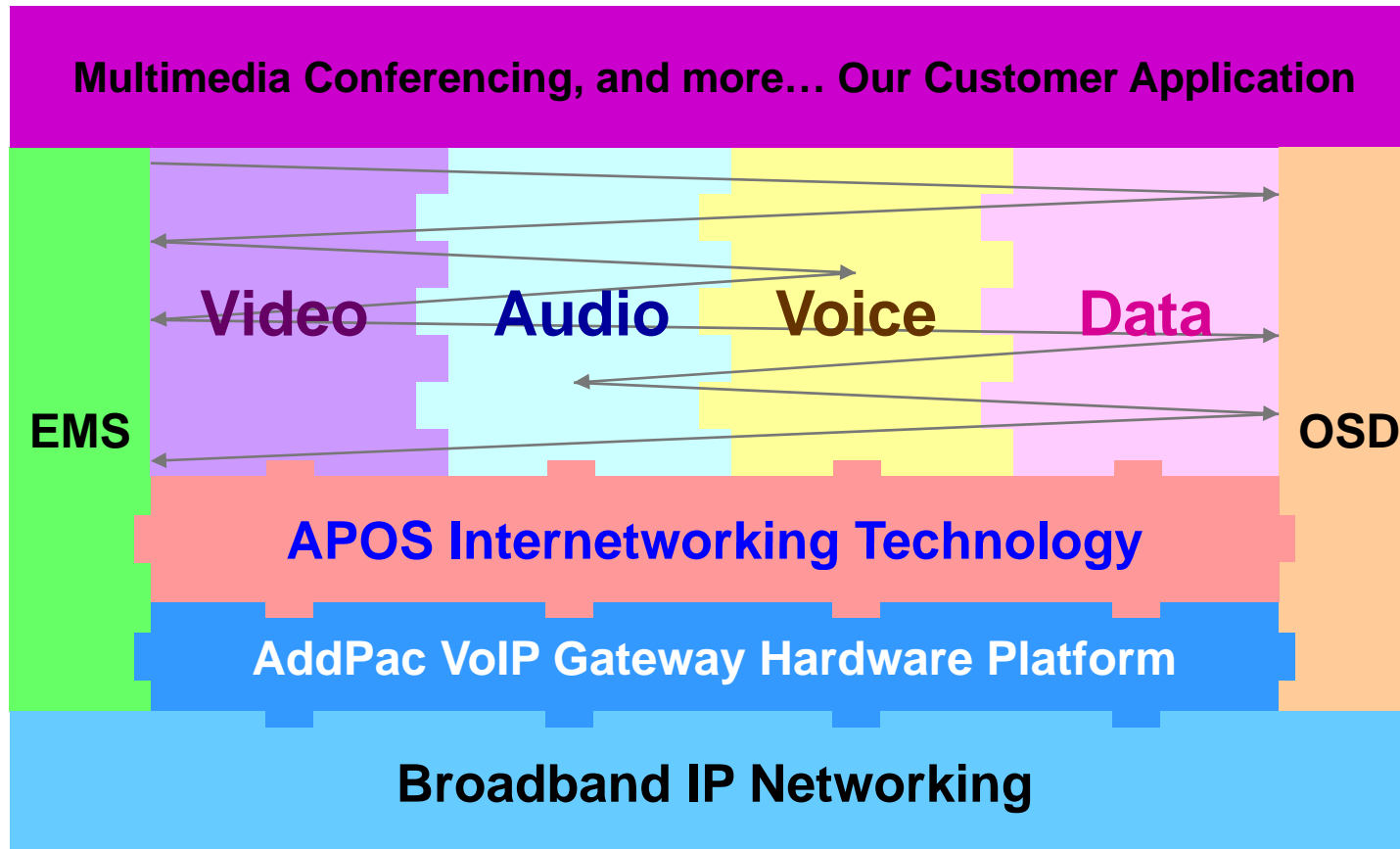
# Product Highlights

## AP2370 Large Capacity VoIP Gateway



# APOS Technology

AP2370 Large Capacity VoIP Gateway



- APOS : AddPac Internetworking Operating System
- OSD : On- Screen Display
- EMS : Element Management System

# Hardware Specification

AP2370 Large Capacity VoIP Gateway

RISC  
CPU

High-end  
DSP

- RISC Microprocessor Computing Power
- Up to 56 Port Analog VoIP Gateway
- Seven(7) VoIP Module Slots (Hot-Swap)
  - 8-Port FXS Card, 8-Port FXO Card,
  - 4-Port E&M Card
  - 1-Port Digital E1, 2-Port Digital E1
- Network Interface
  - Two(2) 10/100Mbps Fast Ethernet (2 x RJ45)
- RS232C Console Interface
- Run LED, LAN LED, Port LEDs
- Internal Power Supply
  - AC Power (Default)

# Hardware Specification

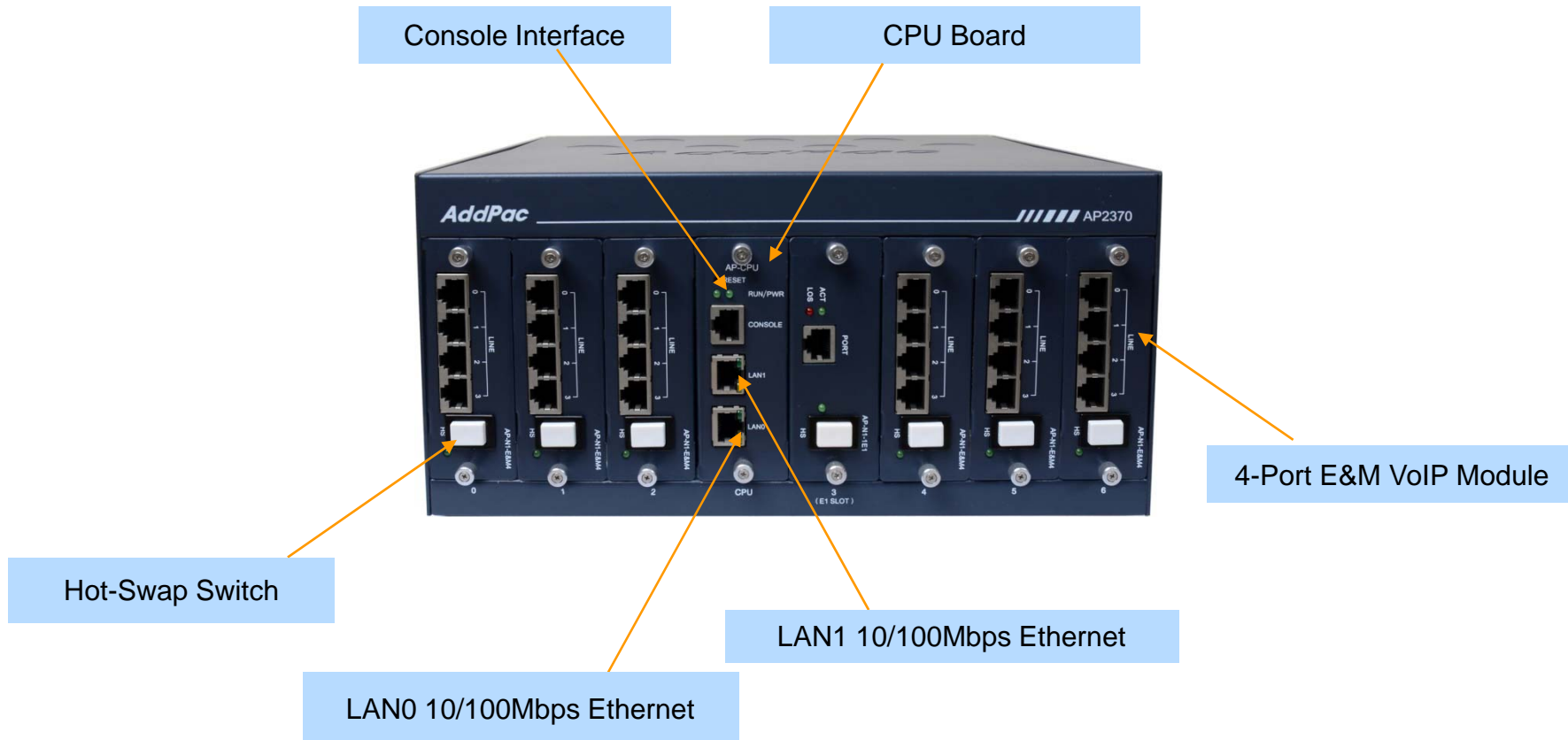
## AP2370 Large Capacity VoIP Gateway

AP2370 VoIP Gateway	Basic Specifications
Voice Interface	Seven(7) VoIP Module Slots
	AP-N1-FXS8, AP-N1-FXO8, AP-N1-FXS4O4, AP-N1-E&M4, AP-N1-E1, AP-N1-2E1, etc
Ethernet Interface	2-Ports 10/100Mbps Ethernet Interface(RJ-45)
Flash Memory	256Mbyte High-speed NAND Flash Memory
Base Memory	128Mbyte High-speed SDRAM
Power Requirement	Power Supply / VAC 110~220V, 50/60Hz, 5V 30A
Operating Temperature	0°C ~ 45°C (32 °F ~ 122°F)
Storage Temperature	-40°C ~ 85°C (-40°C ~ 185°F)
Relative Humidity	5% ~ 95% (Non-condensing)
Dimensions	W×D×H (303.5×300×147mm)
Weight(kg)	7.3Kg

# Hardware Specification

## AP2370 Large Capacity VoIP Gateway

### Front Side





# Hardware Specification

AP2370 Large Capacity VoIP Gateway

## Back Side (AC Power Supply Type)





# VoIP Modules for N1 Platform

# N1 Platform VoIP Modules

AP2370 Large Capacity VoIP Gateway

High-end  
DSP

## AP-N1-FXS8

8-Port FXS Voice Processing Module (8 x RJ11)



## AP-N1-FXO8

8-Port FXO Voice Processing Module (8 x RJ11)



## AP-N1-E&M4

4-Port E&M Voice Processing Module (4 x RJ45)



## AP-N1-E1T1

1-Port VoIP Digital E1/T1 Interface  
Module(1xRJ45)



## AP-N1-2E1T1

2-Port VoIP Digital E1/T1 Interface  
Module(1xRJ45)



# E&M4 Hardware Module Specification

AP2370 Large Capacity VoIP Gateway

High-end  
**DSP**

## Hardware Module Specification



4-Port E&M Interface (4 x RJ45)

Hot-Swap Push Button

# 24 Port E&M + 1E1 Configuration

AP2370 Large Capacity VoIP Gateway

7 Slots = 4-Port E&M x 6 Slots  
+ 1E1 x 1Slot



4-Port E&M VoIP Module

CPU Board

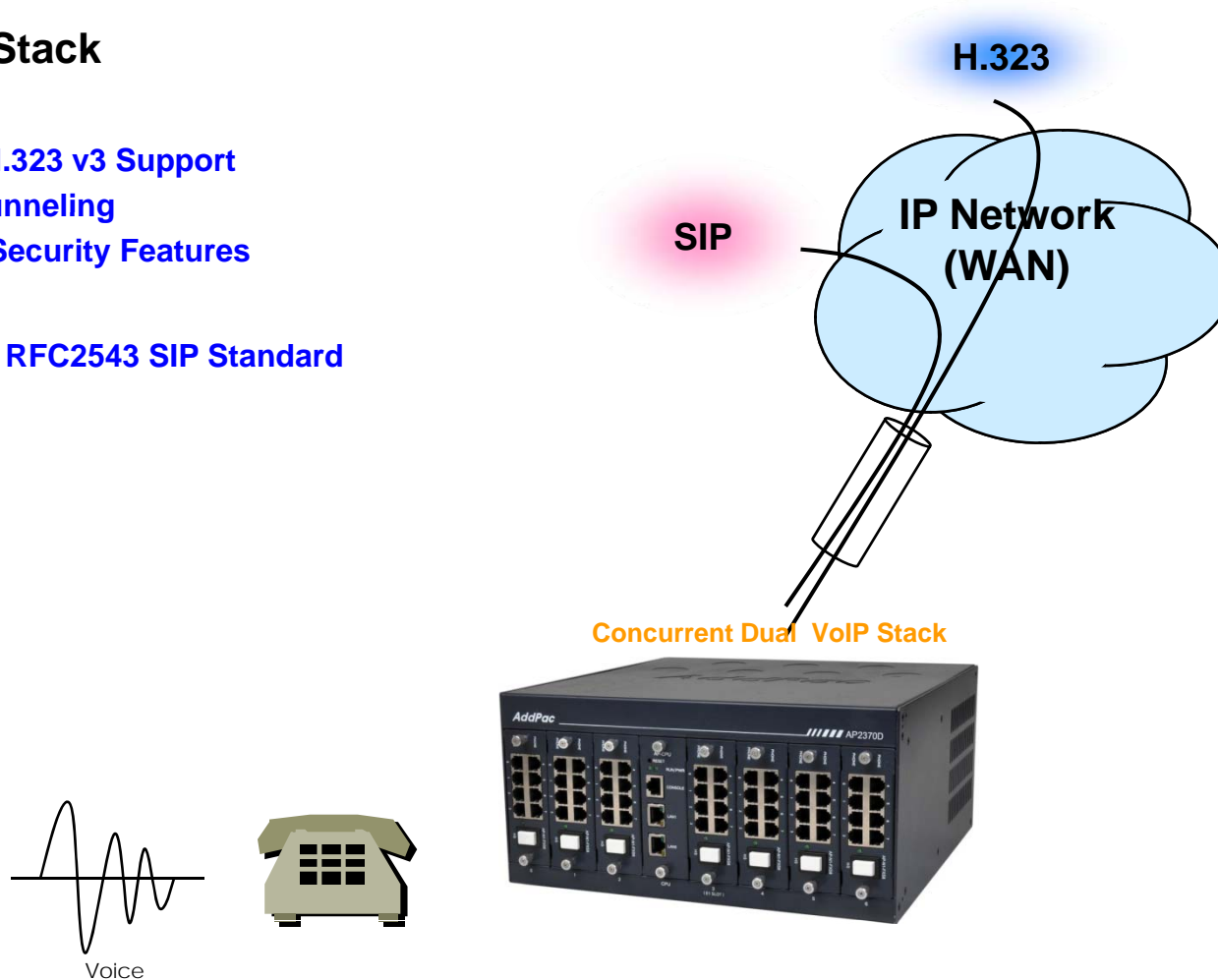
Digital E1 VoIP Module

4-Port E&M VoIP Module

# VoIP (Voice over IP) Service

## AP2370 Large Capacity VoIP Gateway

- **H.323, SIP Dual Stack**
- **H.323**
  - ITU-T Standard H.323 v3 Support
  - Support H.245 Tunneling
  - Including H.235 Security Features
- **SIP**
  - IETF RFC3261 or RFC2543 SIP Standard



# VoIP (Voice over IP) Service

## AP2370 Large Capacity VoIP Gateway

- **H.323**

- Fast connect, normal connect support
- H.245 tunneling support
- Q.931 response message setting for inbound VoIP calls
- H.245 logical channel open timing selection function
- Start H.245 procedure support
- DTMF / Hook flash relay with H.245 alphanumeric / signal
- Secondary gatekeeper support
- Gatekeeper assignment according to the domain name
- Gatekeeper discovery with multicast
- Lightweight RRQ support
- Signaling TCP port assignment
- Resource threshold setting with RAI
- H.235 clear-token, crypto-token support
- canMapAlias support
- Technical prefix (supported prefix) support
- Public IP assignment in NAT environment

- **SIP**

- Gateway-based / Endpoint-based registration support
- Secondary proxy-server assignment function
- SIP signaling port change function
- SIP proxy server assignment according to the domain name
- T.38 real-time fax relay support
- DTMF relay support with RFC2833 / OPTION message
- Re-INVITE support

# VoIP (Voice over IP) Service

## AP2370 Large Capacity VoIP Gateway

- **Voice Codec**

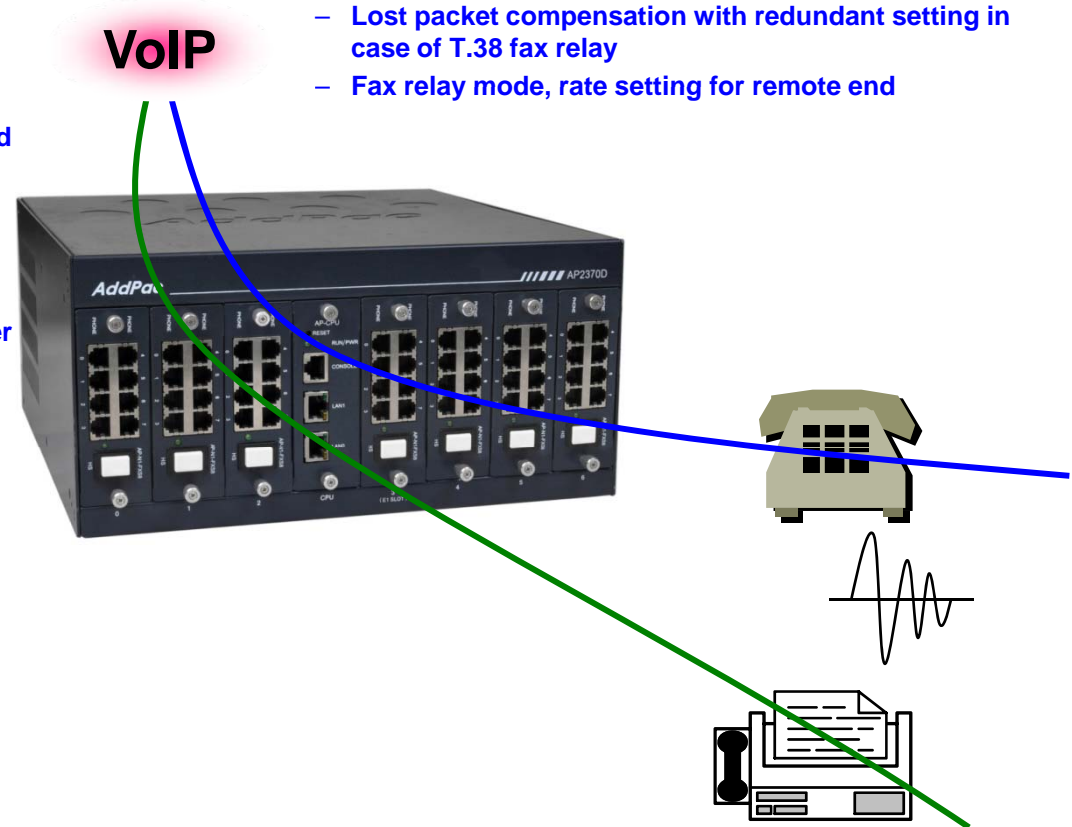
- G.711 A-Law, G.711 U-Law
- G.726 r16, G.726 r32
- G.729A
- G.723.1 r63, G.723.1 r53
- VAD (Voice Activity Detection) function support
- DTMF relay support (H.323, SIP, MGCP common) based on RFC2833

- **RTP**

- Redundant RTP packet transmission in case of severe packet loss
- Dynamic jitter buffer management and RPT packet jitter and loss compensation with heuristic & DSP error concealment
- Static jitter buffer setting support
- Voice frame per RTP packet number control for each codec
- In-band ring-back tone support
- Virtual ring-back tone support
- Tone parameter change support

- **FAX**

- Fax relay mode supporting T.38, inband-T.38, bypass mode
- Lost packet compensation with redundant setting in case of T.38 fax relay
- Fax relay mode, rate setting for remote end





# VoIP (Voice over IP) Service

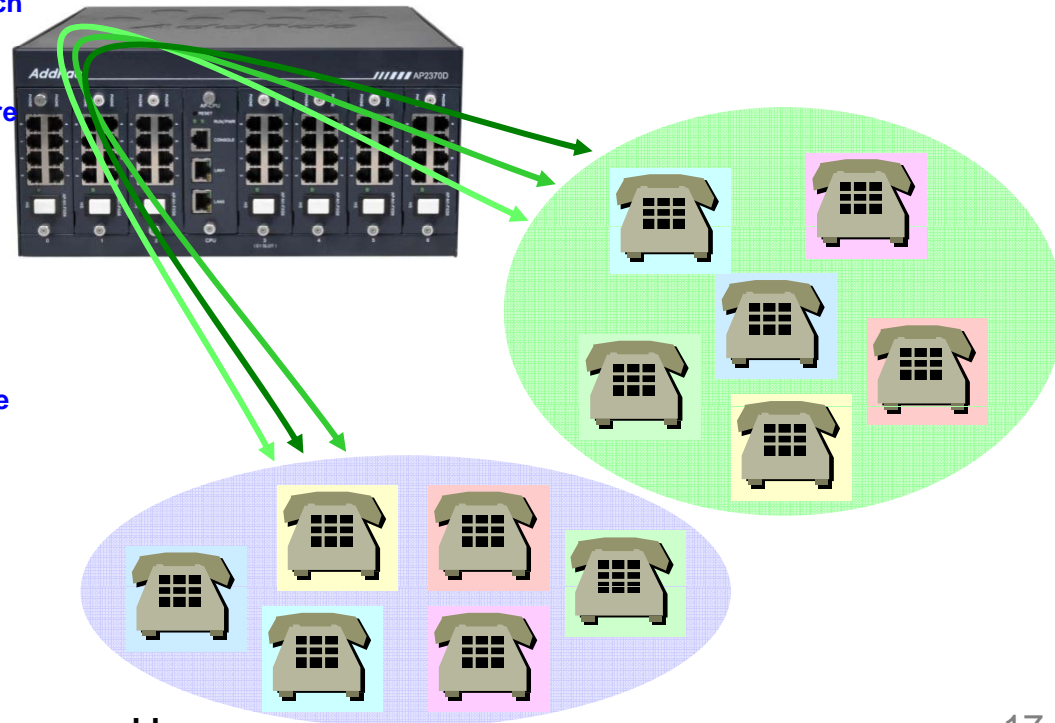
## AP2370 Large Capacity VoIP Gateway

### • VoIP Call Controls

- Hot line connection function with PLAR (Private Line Auto Ring Down)
- Leased line emulation function
- Connection monitoring function
- Fault tolerant with Redundancy and Call Distribution among Gateways for load balancing
- Call attempt with IP address
- H.323, SIP, MGCP inbound call connection for each voice port
- Multiple E.164 setting for one voice port
- One E.164 or digit pattern can be assigned to more than one voice port
- Hunting with Longest match/ priority/ sequence/ random
- One stage call setup by Digit forwarding
- Call barring with specific digit patterns
- Calling and called number conversion for PSTN outbound calls
- PSTN rerouting in case of VoIP call attempt failure

### • VoIP Call Controls (cont.)

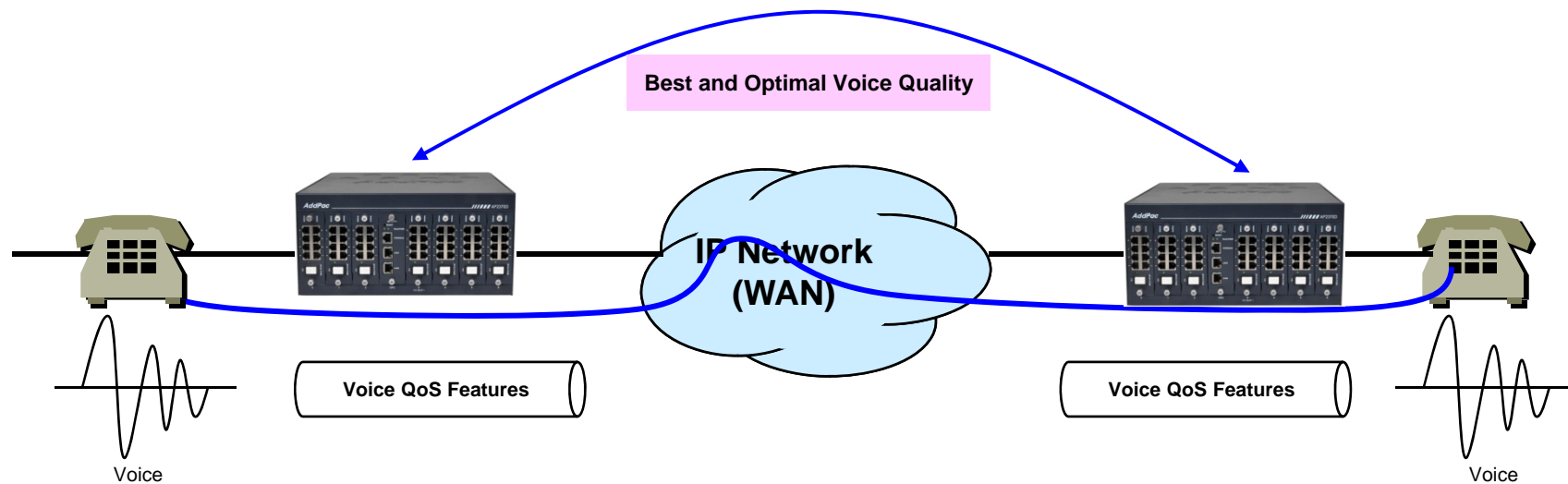
- Call transfer for internal calls
- Call pickup for internal calls
- Calling and called number conversion for VoIP outbound calls
- Calling and called number conversion for VoIP inbound calls
- Fax broadcasting call control



# Advanced QoS Features

## AP2370 Large Capacity VoIP Gateway

- Enhances **Transmit** Voice QoS Features
  - Voice Traffic Priority Queuing
  - QoS Service Profiling
  - Providing Virtual Network Transmit Algorithm
  - Real-time Voice Traffic QoS Support
  - RTP Packet Transmit Interval Control
  - Supporting RTP Packet Redundancy Scheme
  - IP Header Control such as ToS, Diffserv
- Enhances **Receive** Voice QoS Features
  - Dynamic Jitter Buffer Management
  - Error Concealment
  - Support T.38 FAX Data Error Recovery Scheme



# Network Protocols

## AP2370 Large Capacity VoIP Gateway

### Basic Network Protocols

- ARP, IPv4, TCP, UDP, ICMP, SCTP, IGMP, MLD

### Routing Protocol

- IPv4 : Static

### Service Protocol

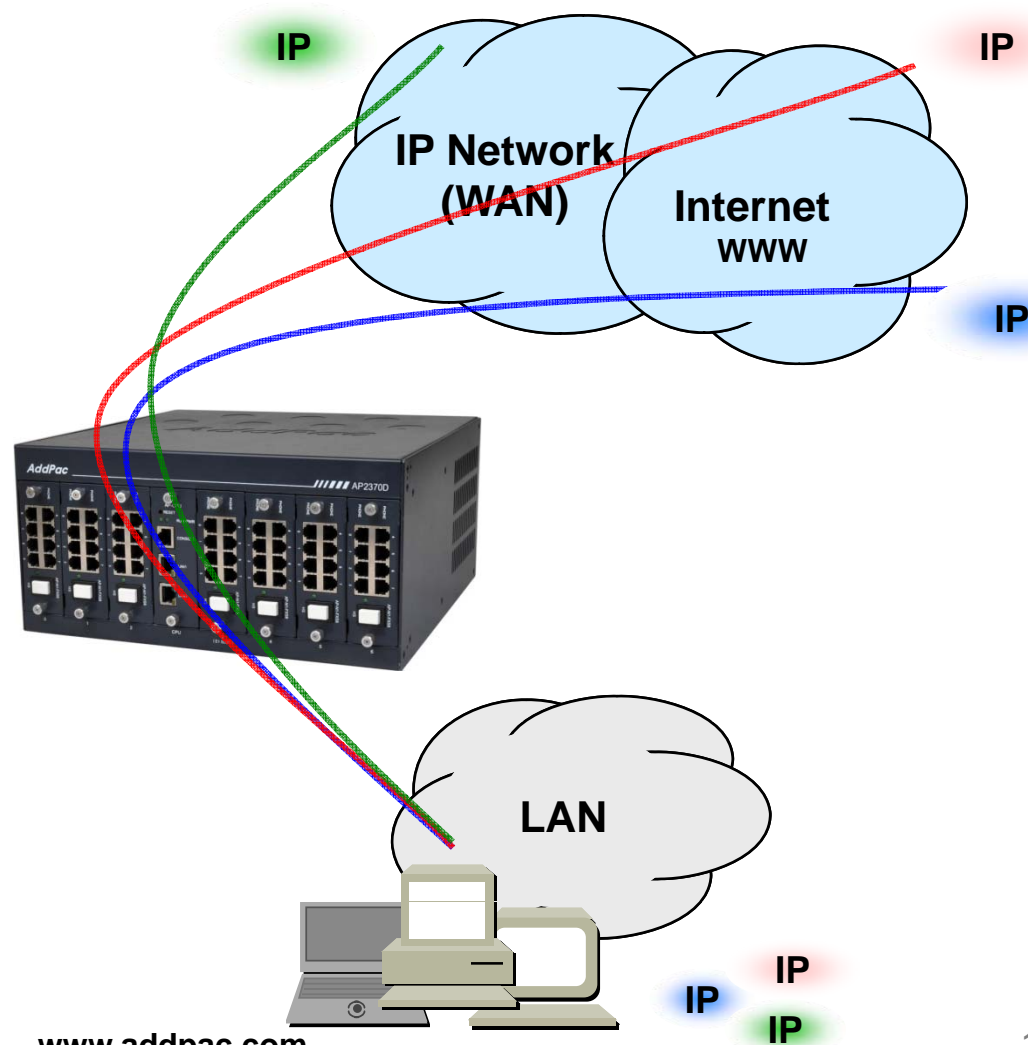
- FTP, Telnet, TFTP, DHCP Server/Relay, SNMP Server
- CDP (Cisco Discovery Protocol)
- DNS Resolver , DDNS(nsupdate)
- Bridge
- Syslog

### IPv4 Address Configuration

- Fixed (Static)
- DHCP
- PPPoE

### Miscellaneous

- Cisco Style CLI
- Standard & Extended IPv4 Access List
- Multi-level User Account Management
- IP accounting
- STUN Client



# Network Management

## AP2370 Large Capacity VoIP Gateway

- **SNMP**

- Standard Simple Network Management Protocol( SNMP) Agent support
- MIB v1 and v2 Support

- **Web-based Management**

- Smart Easy Setup
- Standard Voice Interface
- Standard PSTN Back-up Interface

- **Watch-dog Function**

- Hardware, Software watch-dog services

- **Remote Management**

- Telnet
- Rlogin

- **Auto Upgrade Service**

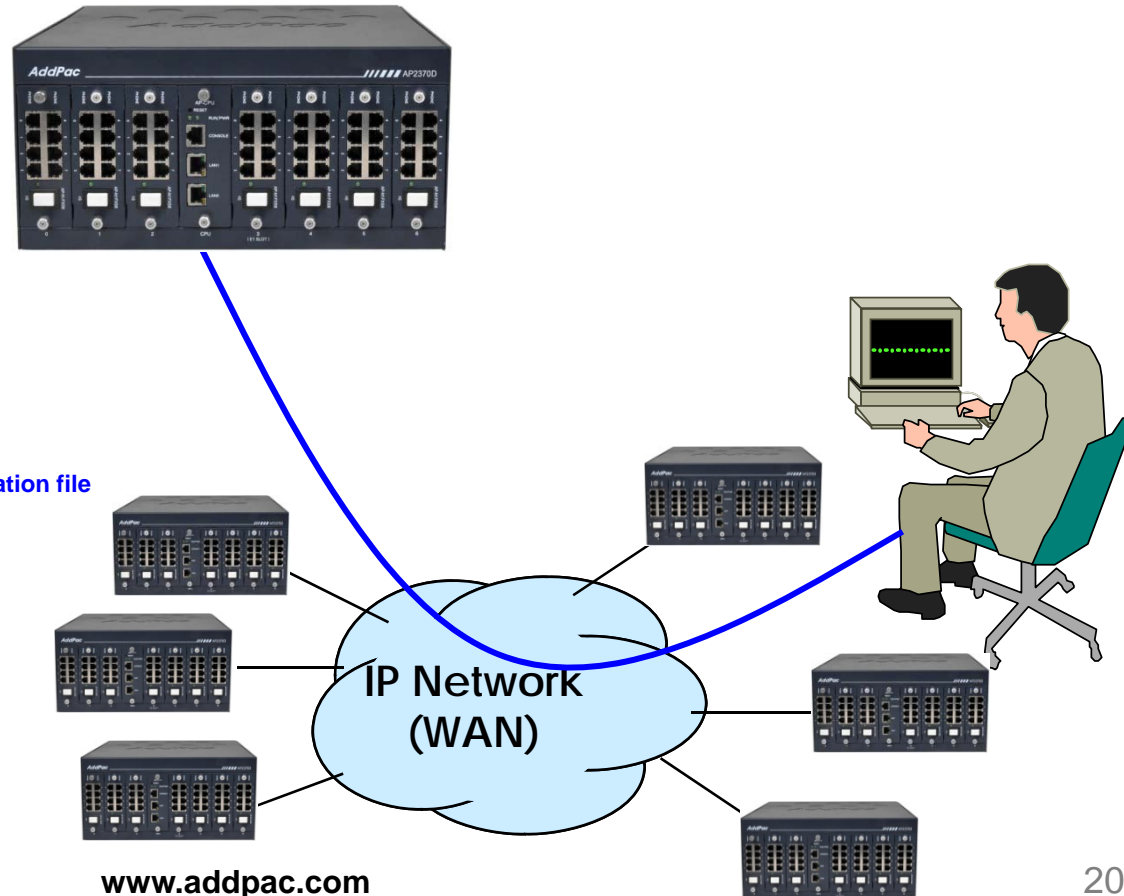
- HTTP server based APOS image and configuration file auto-upgrade support

- **Batch Job Function**

- Text based script downloading

- **Interoperable with AP-VPMS Service**

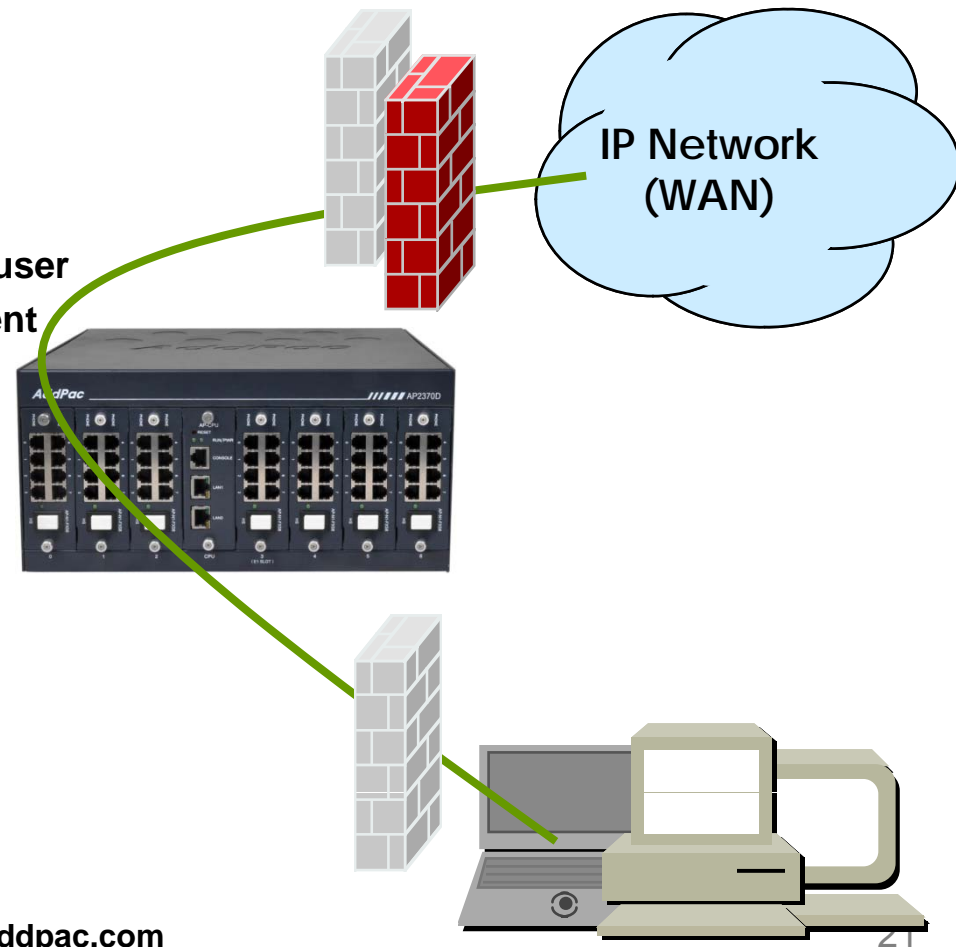
- AddPac VoIP Plug & Play Management System (AP-VPMS)



# Security Management

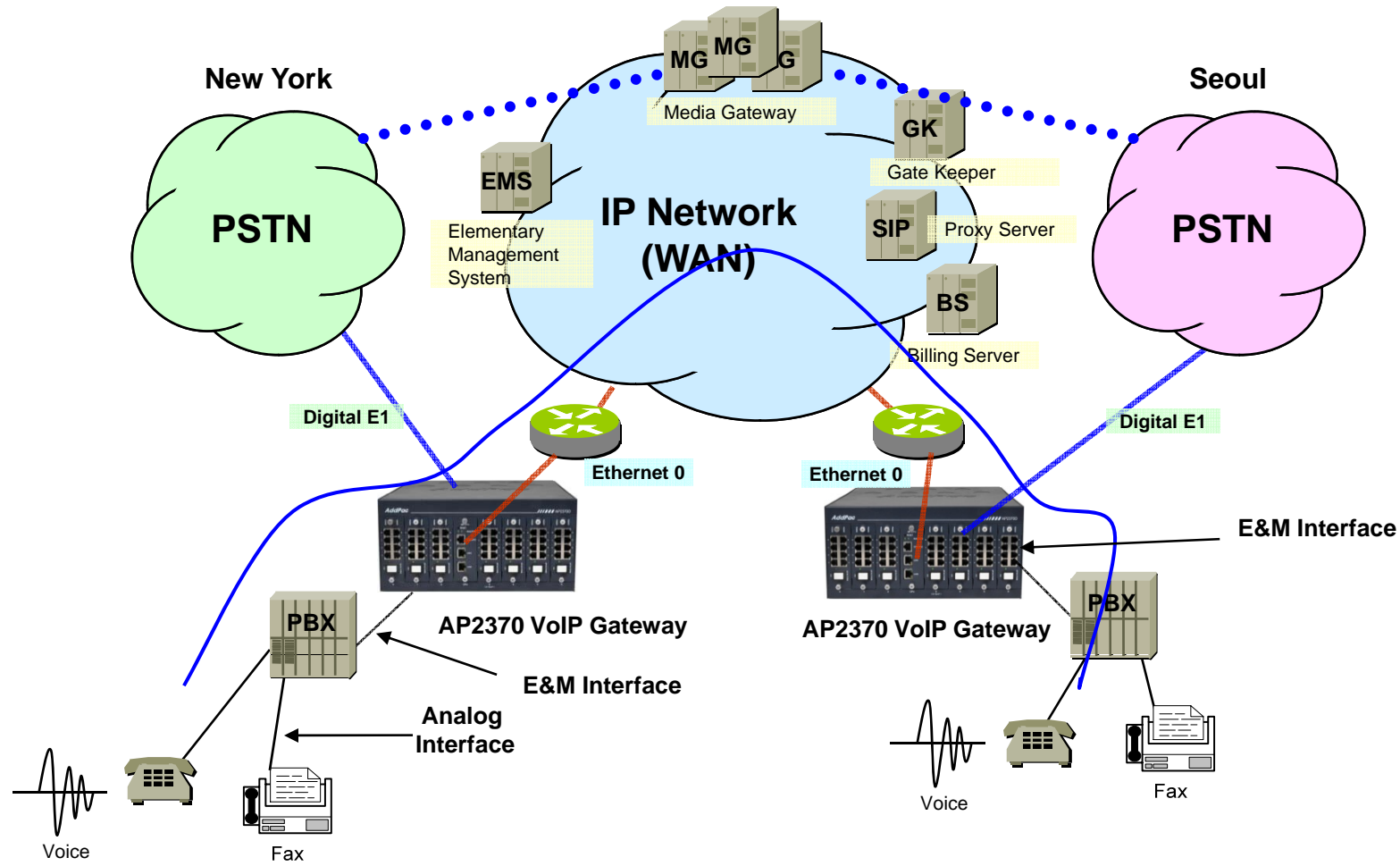
## AP2370 Large Capacity VoIP Gateway

- IP packet filtering
- IP access list
- User authentication function
  - Password Authentication Protocol (PAP)
  - Challenge Handshake Authentication Protocol (CHAP)
- Enable/Disable specific protocols
- Auto-square connect of Telnet session
- Account Management function for multi-level user
- SNMP/TELNET/FTP/HTTP/TFTP port assignment function
- SNMP/TELNET/FTP access list management
- Boot mode security checking function



# Legacy PBX Application

## AP2370 Large Capacity VoIP Gateway



# Ordering Information

- **AP2370 VoIP Gateway Hardware**
  - AP2370 VoIP Gateway Main Body
  - RISC Microprocessor with High-end Programmable DSP Architecture
  - 2-ports 10/100Mbps Fast Ethernet(RJ45)
  - Option Module: AP-N1-FXS8, AP-N1-FXO8, AP-N1-E&M4, AP-N1-1E1,etc
  - Including Network Cable & Power Supply Cable, etc.
- **Built-in APOS Internetworking Software for AP2370**
- **Including 1 Year Hardware Warranty**
- **Product Documents**
  - Install and Operation Guide (PDF)
- **Pricing**
  - AddPac Technology Regional Sales Manager
  - Authorized Sales and Marketing Representatives
  - Please Contact [www.addpac.com](http://www.addpac.com)

# VoIP Gateway Series

# Thank you!

**AddPac Technology Co., Ltd.**  
Sales and Marketing

Phone +82.2.568.3848 (KOREA)

FAX +82.2.568.3847 (KOREA)

E-mail [sales@addpac.com](mailto:sales@addpac.com)