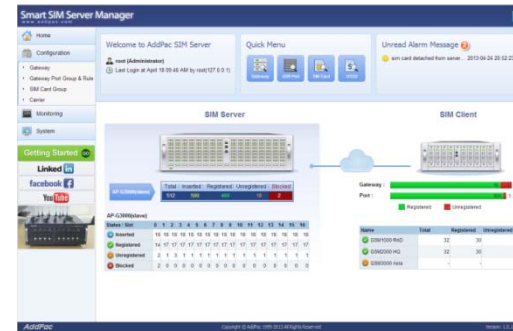




# AP-GSS1200

## 128SIM GSM SIM Server

High Performance GSM SIM Server Solution



SIM Server Stacking



# **AddPac**

## AddPac Technology

2013, Sales and Marketing

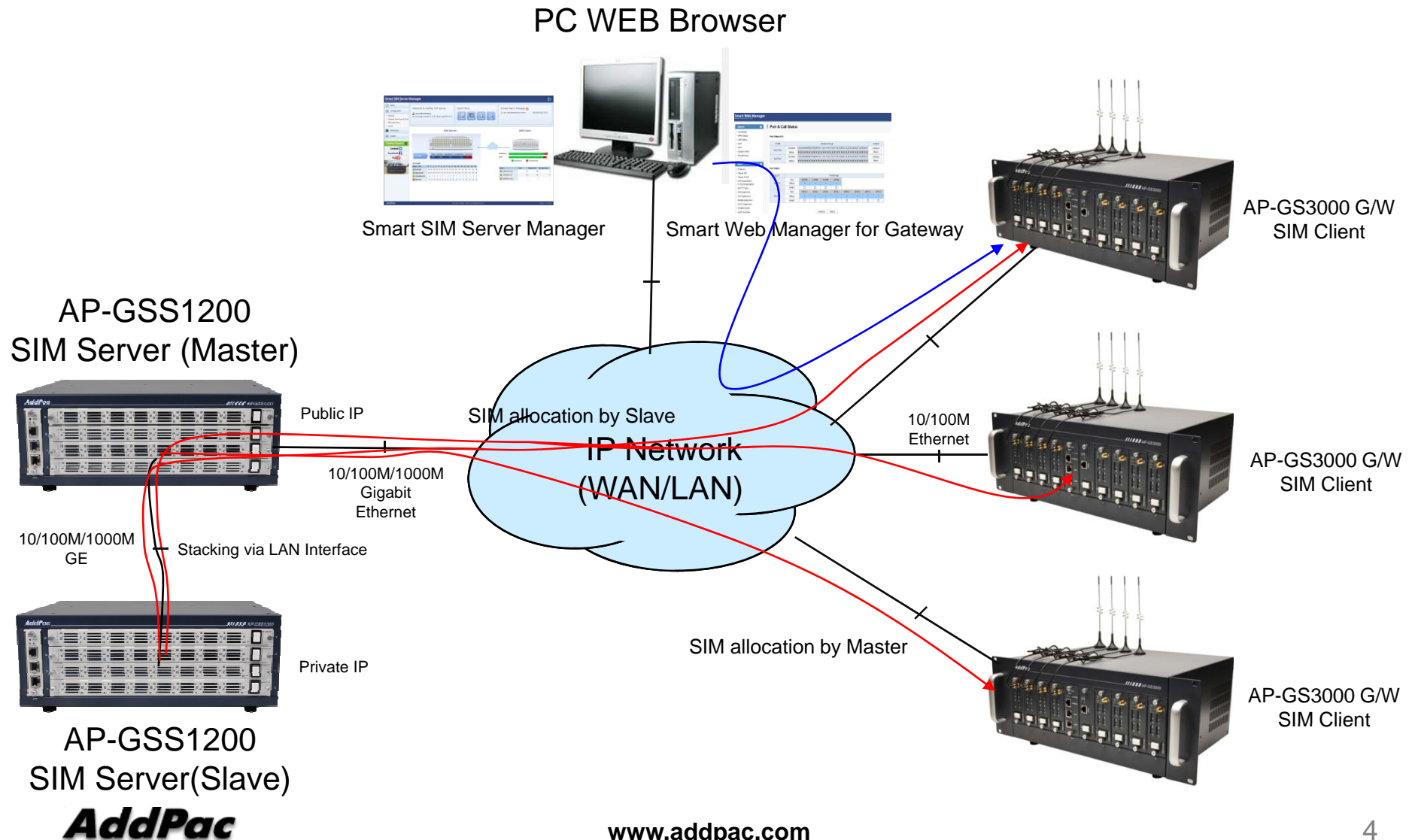
# Contents

- Main Features
- SIM Server Stacking Network Diagram
  - CASE 1 : Master 1 + Slave 1
  - CASE 2 : Master 1 + Slave 2
- Smart Web Manager for SIM Server (Stacking Example)
  - Main
  - Configuration
  - Monitoring

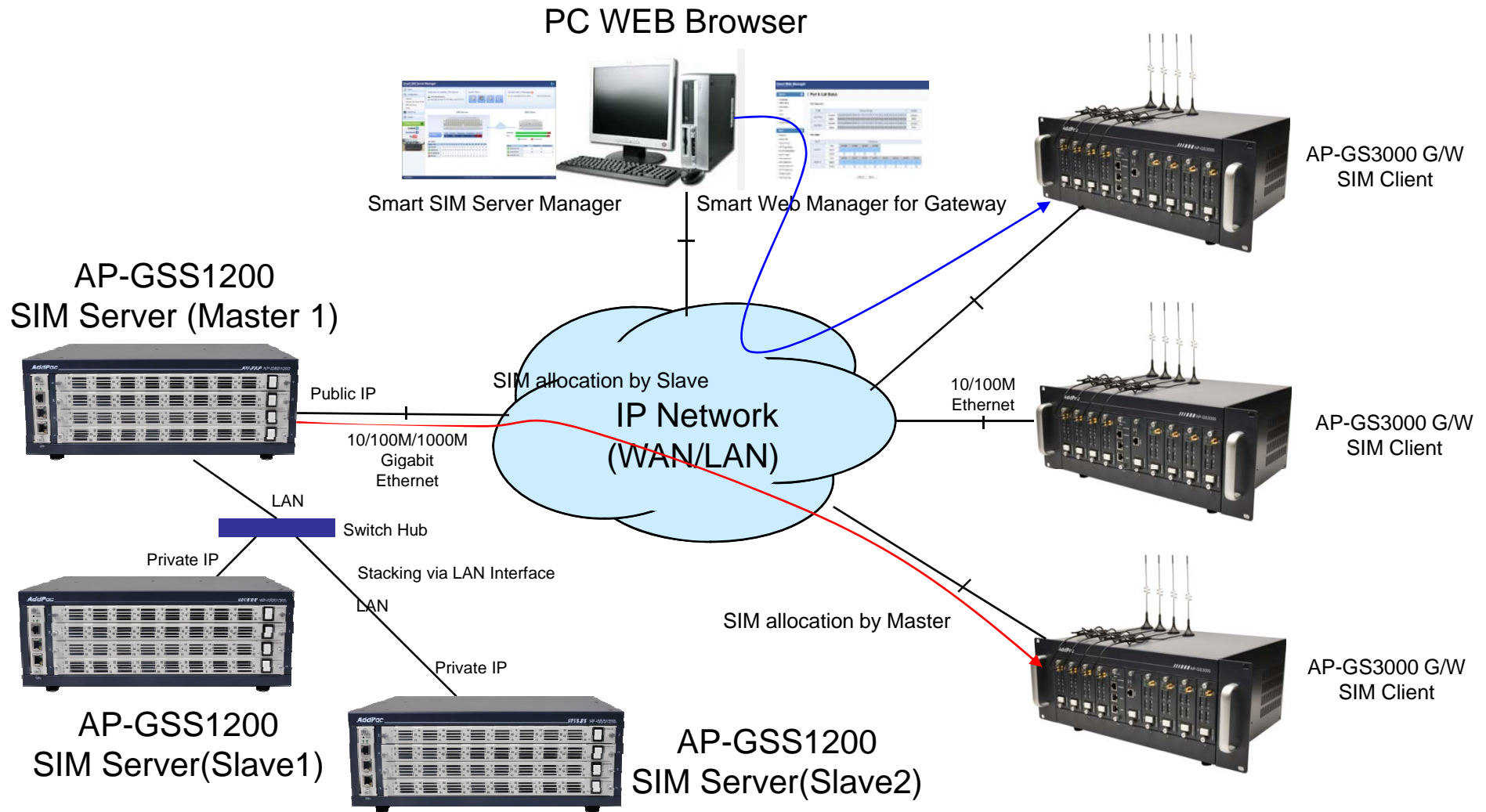
# Main Features

- SIM resources are extended to SIM Server Slaves.
- All SIM resources are managed by SIM Server Master.
- Support flexible SIM resource configuration.  
(master & slave SIM Server resources can be set to same SIM group)
- Minimize Inter-communication packets between master and slaves for effective communication cost.
- Support user-friendly menu and easy configuration for SIM Sever stacking.  
(auto SIM Server Slave provisioning by registration)

# SIM Server Stacking Network Diagram (Master 1+ Slave 1)



# SIM Server Stacking Network Diagram (Master 1+ Slave 2)



# Main – SIM Server

**Smart SIM Server Manager**  
www.addpac.com

Home | Configuration | Monitoring | Gateway | Gateway Port | SIM Card | USSD Service | System

Getting Started GO | Linked in | facebook | YouTube

Welcome to AddPac SIM Server  
root (Administrator)  
Last Login at May 24 05:41 PM by root(172.16.1.18)

Quick Menu: Gateway, G/W Port, SIM Card, USSD

Unread Alarm Message 2  
sim server 172.16.10.2 registered this server... 2013-05-25 02:24:15  
new sim card group defined !... 2013-05-25 01:50:46

**SIM Server**

	Total	Inserted	Registered	Unregistered	Blocked
GSS1500_G2	254	24 / 254	4 / 254	0 / 254	0 / 254
GSS1500_G2	514	28 / 514	0 / 514	0 / 514	0 / 514

**SIM Client**

Gateway: 100% Registered  
Port: 4 Registered, 36 Unregistered

Name	Total	Registered	Unregistered
gateway_test	36	4	32

**GSS1500\_G2 Detailed Status**

Status \ Slot	0	1	2	3	4	5	6	7
Inserted	0	16	8	0	0	0	0	0
Registered	0	4	0	0	0	0	0	0
Unregistered	0	0	0	0	0	0	0	0
Blocked	0	0	0	0	0	0	0	0

**Server Summary Information**  
shows sim card status such as registered, blocked and inserted(installed) count of Master SIM server and other Slave SIM servers

**Detailed Sim Card Status**  
shows sim card detail status for each slot/port if you click Master SIM server and Slave SIM server button

AddPac | Copyright © AddPac 1999-2013 All Rights Reserved | Version: 1.0.130509

# Configuration – SIM Server

Smart SIM Server Manager  
www.addpac.com

Home  
Configuration  
Gateway  
Gateway Port Group & Rule  
SIM Card Group  
SIM Server  
Carrier  
Monitoring  
System

Getting Started GO  
Linked in  
facebook f  
YouTube

**SIM Server**  
Add SIM Server Refresh

	Modify	Delete	Name	Description	Status	IP Address	SIM Count
1			GSS1500_G2	default array	Registered	0.0.0.0	256
2			GSS1500_G2	stacked server #1	Registered	172.16.9.3	256

**SIM Server**  
shows Master SIM Server and other Slave SIM server list and also each Slave(Stacked) SIM server try to register to the Master SIM server which authenticates server.

AddPac  
Copyright © AddPac 1999-2013 All Rights Reserved  
Version: 1.0.130509

# Configuration – SIM Server

**Smart SIM Server Manager**  
www.addpac.com

Home  
Configuration  
Gateway  
Gateway Port Group & Rule  
SIM Card Group  
SIM Server  
Carrier  
Monitoring  
System

**Add SIM Server**  
Apply Cancel

**General**

Name *	<input type="text" value="slave sim server #1"/>
Description	<input type="text" value="this is stacked server"/>
ID *	<input type="text" value="root"/> <input type="button" value="Check ID"/>
Password *	<input type="password" value="....."/>

**Description**

This is a SIM server which has lots of SIM (Subscriber Identification Module) cards. Multiple SIM servers can be added by stacking and a Master SIM server has a role of saving configuration and managing all SIM cards of Slave SIM servers as well as Master SIM server.

**Add SIM Server**  
Administrator can add new Slave SIM server if more SIM cards need to be used. Master SIM server authenticates new SIM server using ID & password login procedure.

AddPac  
Copyright © AddPac 1999-2013 All Rights Reserved  
Version: 1.0.130509



# Monitoring – SIM Server

Smart SIM Server Manager  
www.addpac.com

Home  
Configuration  
Monitoring  
Gateway  
Gateway Port  
SIM Card  
USSD Service  
System

Getting Started GO  
Linked in  
facebook f  
YouTube

**SIM Cards**

SIM Card Group Carrier Clear SIM Control USSD Service

Search: SIM Server All Refresh

Configuration

Card	Description	SIM Server	SIM Card Group	Carrier	EN	Assigned G/W	Assigned Port	Hardware Stati	Operation Stati	Admin Status	Call Duration	Duration(min)
0/0		GSS1500_G2_Master	sim_group	SKT_Carrier	490154203237518	gateway_test	0/0	Attached	Idle	Unblocked		
0/0		GSS1500_G2_Slave	sim_group					Attached	Idle	Unblocked		
0/1		GSS1500_G2_Slave						Not Equip...	Idle	Unblocked		
0/1		GSS1500_G2_Slave	sim_group					Attached	Idle	Unblocked		
0/2		GSS1500_G2_Slave						Not Equip...	Idle	Unblocked		
0/2		GSS1500_G2_Slave						Attached	Idle	Unblocked		
0/3		GSS1500_G2_Slave						Not Equip...	Idle	Unblocked		
0/3		GSS1500_G2_Slave	sim_group					Attached	Idle	Unblocked		
0/4		GSS1500_G2_Master						Not Equip...	Idle	Unblocked		
0/4		GSS1500_G2_Slave	sim_group					Attached	Idle	Unblocked		
0/5		GSS1500_G2_Master						Not Equip...	Idle	Unblocked		
0/5		GSS1500_G2_Slave	sim_group					Attached	Idle	Unblocked		
0/6		GSS1500_G2_Master						Not Equip...	Idle	Unblocked		
0/6		GSS1500_G2_Slave	sim_group					Attached	Idle	Unblocked		
0/7		GSS1500_G2_Master						Not Equip...	Idle	Unblocked		
0/7		GSS1500_G2_Slave	sim_group					Attached	Idle	Unblocked		
0/8		GSS1500_G2_Master						Not Equip...	Idle	Unblocked		
0/8		GSS1500_G2_Slave						Attached	Idle	Unblocked		
0/9		GSS1500_G2_Master						Not Equip...	Idle	Unblocked		

Page 1 of 31 Total: 768

AddPac Copyright © AddPac 1999-2013 All Rights Reserved Version: 1.0.130509

**SIM Server**  
monitors status of SIM card allocation to the gateway port and various mobile information(call duration, balance reply ) for each SIM server ( master and slave )



# Thank you!

**AddPac Technology Co., Ltd.**  
Sales and Marketing

Phone +82.2.568.3848 (KOREA)

FAX +82.2.568.3847 (KOREA)

E-mail : [sales@addpac.com](mailto:sales@addpac.com)