



# AP-LMS2500

## Bluetooth VoIP Gateway

High Performance LMS(Land to Mobile Station) VoIP Gateway Solution

Inter-Call Interval Control



**AddPac**

**AddPac Technology**

Sales and Marketing

[www.addpac.com](http://www.addpac.com)

# Contents

- Product Overview
- Hardware Specification
- Network Diagram
- Smart Web Manager Config.



Bluetooth VoIP Module

# Product Overview

## AP-LMS2500 Multi-Port LMS VoIP Gateway

- Four(4) Module Slots for 4-Port Bluetooth Module, 3G WCDMA, 8FXS/8FXO Analog Interface (Up to 16-Port Bluetooth Channel)
- Analog Interface (FXS)/VoIP Interface(LAN) Both Support
- Mobile Phone Interworking Solution via Bluetooth Technology
- H.323/SIP Dual Concurrent Stack Embedded
- High Performance RISC & Programmable DSP Architecture
- Two(2) 10/100Mbps Fast Ethernet (IP Share, etc)
- High Performance LAN-to-LAN Routing Capability
- G.711/G.726/G.723/G.729, T.38 Fax , VAD, etc
- Powerful Network Protocols (PPPoE, DHCP, Static Routing, etc)
- Firmware Upgradeable Architecture
- Smart Web Manager for LMS VoIP Gateway
- Smart NMS for Large Scale Deployment
- Advanced Voice QoS Mechanism

# Hardware Specification

## AP-LMS2500 Multi-Port LMS VoIP Gateway

RISC  
CPU

High-end  
DSP

- RISC Microprocessor Computing Power
- Four(4) Module Slot for Bluetooth, 3G, Analog Interface
- 4-Port Bluetooth Module(AP-N1-LMS4)
  - Four(4) Bluetooth Antenna Interface
  - Hot-Swap
- VoIP Interface Module
  - 8-Port FXS Module (AP-N1-FXS8)
  - 8-Port FXO Module (AP-N1-FXO8)
  - Digital E1/T1 Module (AP-N1-E1)
  - Hot-Swap
- Network Interface
  - Two(2) 10/100Mbps Fast Ethernet (RJ45)
- RS232C Console Interface for CLI
- Run LED, LAN LED, Port LEDs
- Internal Power Supply



# Hardware Specification

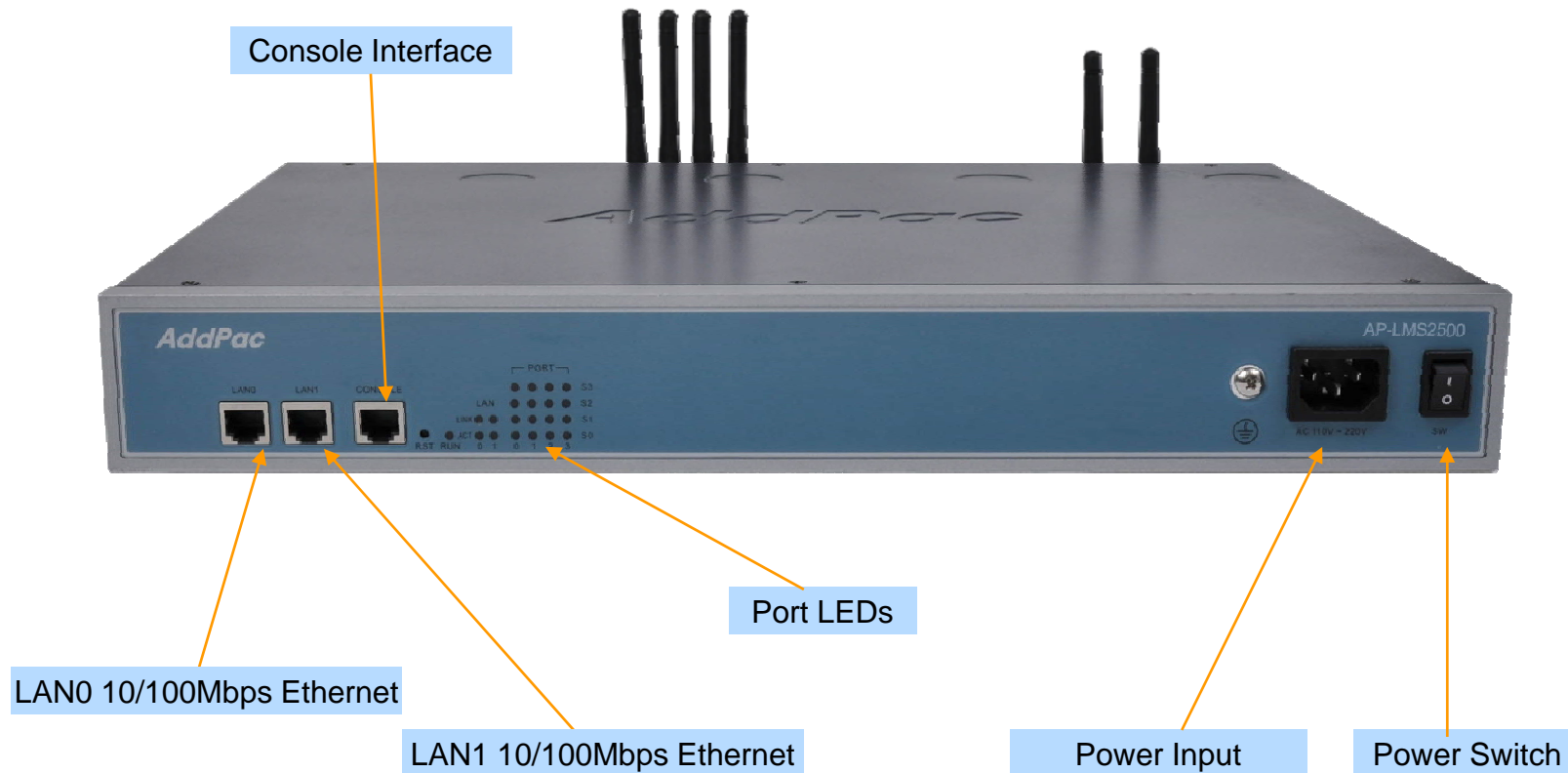
## AP-LMS2500 Multi-Port LMS VoIP Gateway

<b>AP-LMS2500 LMS VoIP Gateway</b>	<b>Basic Specifications</b>
<b>Mobile Interface</b>	Four(4) Module Slots for LMS, 3G WCDMA, etc
	AP-N1-LMS4, AP-N1-3G4I, AP-N1-FXS8, AP-N1-FXO8, AP-N1-FXS4O4, AP-N1-E1
<b>Ethernet Interface</b>	2-Ports 10/100Mbps Ethernet Interface(RJ-45)
<b>Flash Memory</b>	512Mbyte Flash
<b>Base Memory</b>	128Mbyte High-Speed SDRAM
<b>Power Requirement</b>	Power Supply / VAC 110~220V, 50/60Hz, 5V 20A
<b>Operating Temperature</b>	0°C ~ 45°C (32 °F ~ 122°F)
<b>Storage Temperature</b>	-40°C ~ 85°C (-40°C ~ 185°F)
<b>Relative Humidity</b>	5% ~ 95% (Non-condensing)
<b>Dimensions</b>	H x W x D (56 x 440 x 313mm)
<b>Weight(kg)</b>	4.9Kg

# Hardware Specification

AP-LMS2500 Multi-Port LMS VoIP Gateway

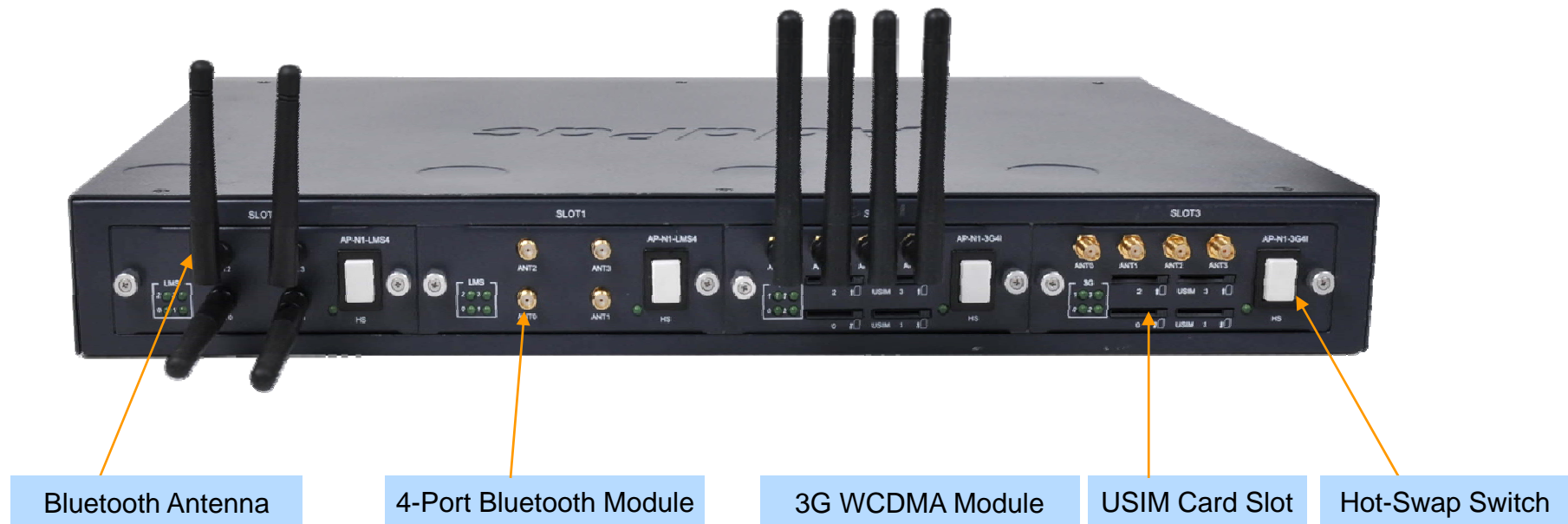
## Front Side View



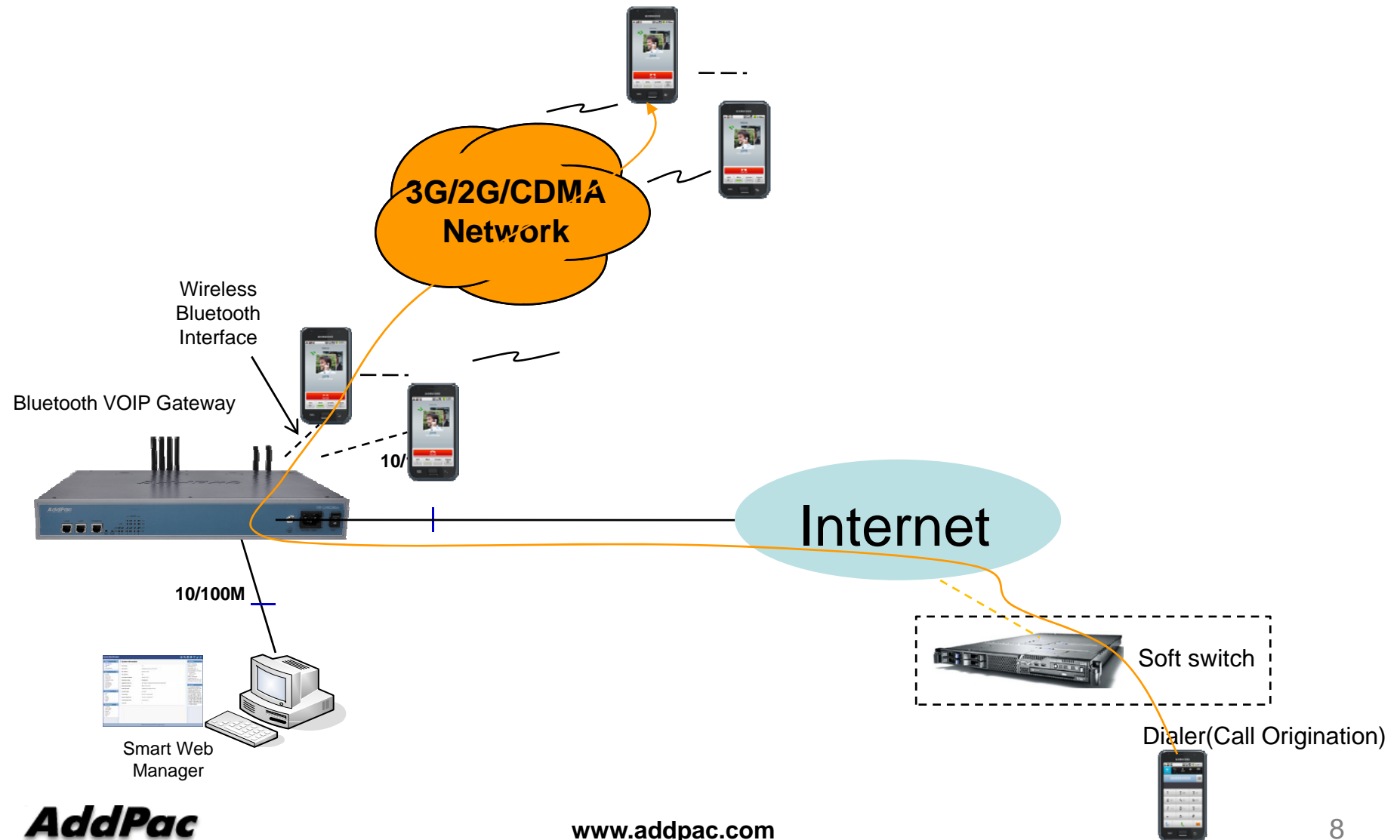
# Hardware Specification

AP-LMS2500 Multi-Port LMS VoIP Gateway

## Back Side View (8-Port Bluetooth + 8-Port 3G WCDMA)

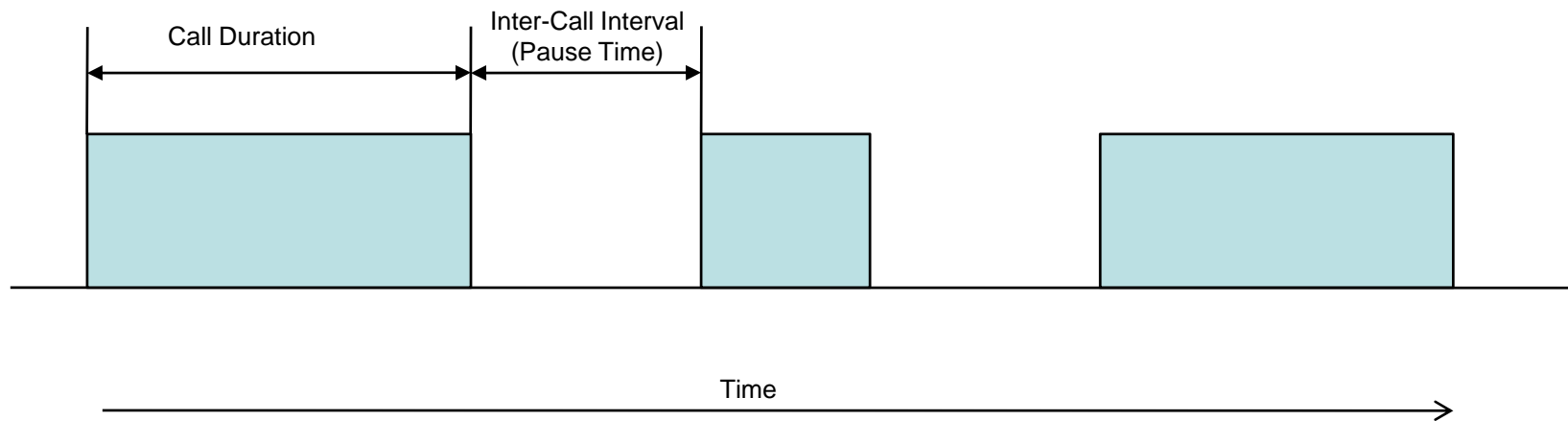


# Network Diagram





# Inter-Call Interval (Port based)





# Smart Web Manager Overview for Inter-Call Interval Control

# Advanced : Inter-Call Interval Control (Port based)

Smart Web Manager  
www.addpac.com

**Port Control**

Port Control

Port	Port Type	InputGain	OutputGain	Caller ID	CallIdType	DidType	DtmfInband	PlayRingNumber	MobileCallRxMode	PauseTime (0-3600)	description
P1:0	BLT	0	0	<input type="checkbox"/>			<input type="checkbox"/>	dial-tone		15	
P1:1	BLT	0	0	<input type="checkbox"/>			<input type="checkbox"/>	dial-tone		5	
P1:2	BLT	0	0	<input type="checkbox"/>			<input type="checkbox"/>	dial-tone		5	
P1:3	BLT	0	0	<input type="checkbox"/>			<input type="checkbox"/>	dial-tone		5	

Apply

**Information**

AddPac Technology  
Model : LMS2500\_G2  
H/W Version : 2.0  
S/W Version : 8.51.018  
Smart Web Version : 0.4  
Smart Web Build : Mar 21 2018

Voice Interface  
None :: None : None  
Protocol : SIP  
Status : Unregistered  
Current Calls : 0  
CallNetwork : Static  
[172.17.205.25](tel:172.17.205.25)  
Mac Address: 0002.a400.0000  
Unread Message:  
P1:0(0)  
P1:1(0)  
P1:2(0)  
P1:3(0)

**Description**

Adjust the input voice volume from FXS/FXO/E1/E&M to DSP and the output volume from DSP to the phone or PSTN line;

**AddPac VTO Service**

VoIP Traffic Optimizer

sales@addpac.com  
vtosales@addpac.com

©AddPac Technology. all rights reserved.

# System : Port Status

Smart Web Manager  
www.addpac.com

**System Information**

Network Information	Static <a href="#">172.17.205.129</a>
WAN LINK Status	100Mbps FULL Duplex Link UP
LAN LINK Status	Link Down
Voice Interface Module	None : None : None
VoIP Protocol	SIP
Registration Status	Unregistered
Total Calls	0

**Port Status**

SLOT	Port	Port Group			
		0(BLT)	1(BLT)	2(BLT)	3(BLT)
SLOT 1	Status	I	P	I	I
	Select	<input type="checkbox"/>	<input type="checkbox"/>	<input type="checkbox"/>	<input type="checkbox"/>

Unblock    Block

Connection State : (Connected)    (Disconnected || Blocked)  
Call State : (Idle)    (Ring || Dial)    (Called)    (Calling)    (Blocked)    (Paused)

**Call State**

Port	Direction	Duration	Calling Number	Called Number	CODEC	Src/Dest. IP
------	-----------	----------	----------------	---------------	-------	--------------

**Information**

AddPac Technology  
Model : LMS2500\_G2  
H/W Version : 2.0  
S/W Version : 8.51.018  
Smart Web Version : 0.4  
Smart Web Build : Mar 21 2018  
Voice Interface  
None : None : None  
Protocol : SIP  
Status : Unregistered  
Current Calls: 0  
CallNetwork : Static  
[172.17.205.129](#)  
Mac Address: 0002.a4ad.12ca  
Unread Message:  
P1:0(0)  
P1:1(0)  
P1:2(0)  
P1:3(0)

**Description**

- VoIP Anti-Block
- VoIP Traffic Compression
- Plug&Play VTO Service
- Remote GSM Gateway Web Connect Service : No Teamviewer
- VoIP Traffic Monitoring (Bandwidth, Packet loss, Delay, CDR, ASR/ACD)

sales@addpac.com  
vtosales@addpac.com

©AddPac Technology, all rights reserved.

# LMS VoIP Gateway Series

# Thank you!

**AddPac Technology Co., Ltd.**  
Sales and Marketing

Phone +82.2.568.3848 (KOREA)

FAX +82.2.568.3847 (KOREA)

E-mail [sales@addpac.com](mailto:sales@addpac.com)