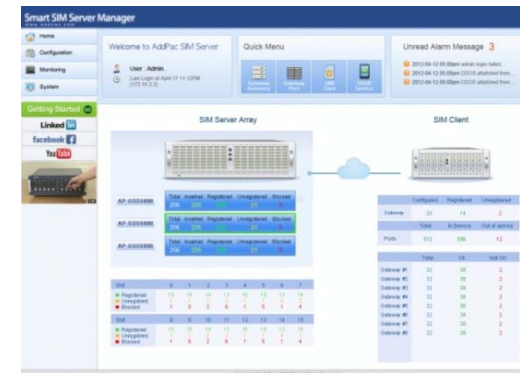


# GSM SIM Server Interworking with 4,8 Port SOHO GSM Gateways



**AddPac**

**AddPac Technology**

Sales and Marketing

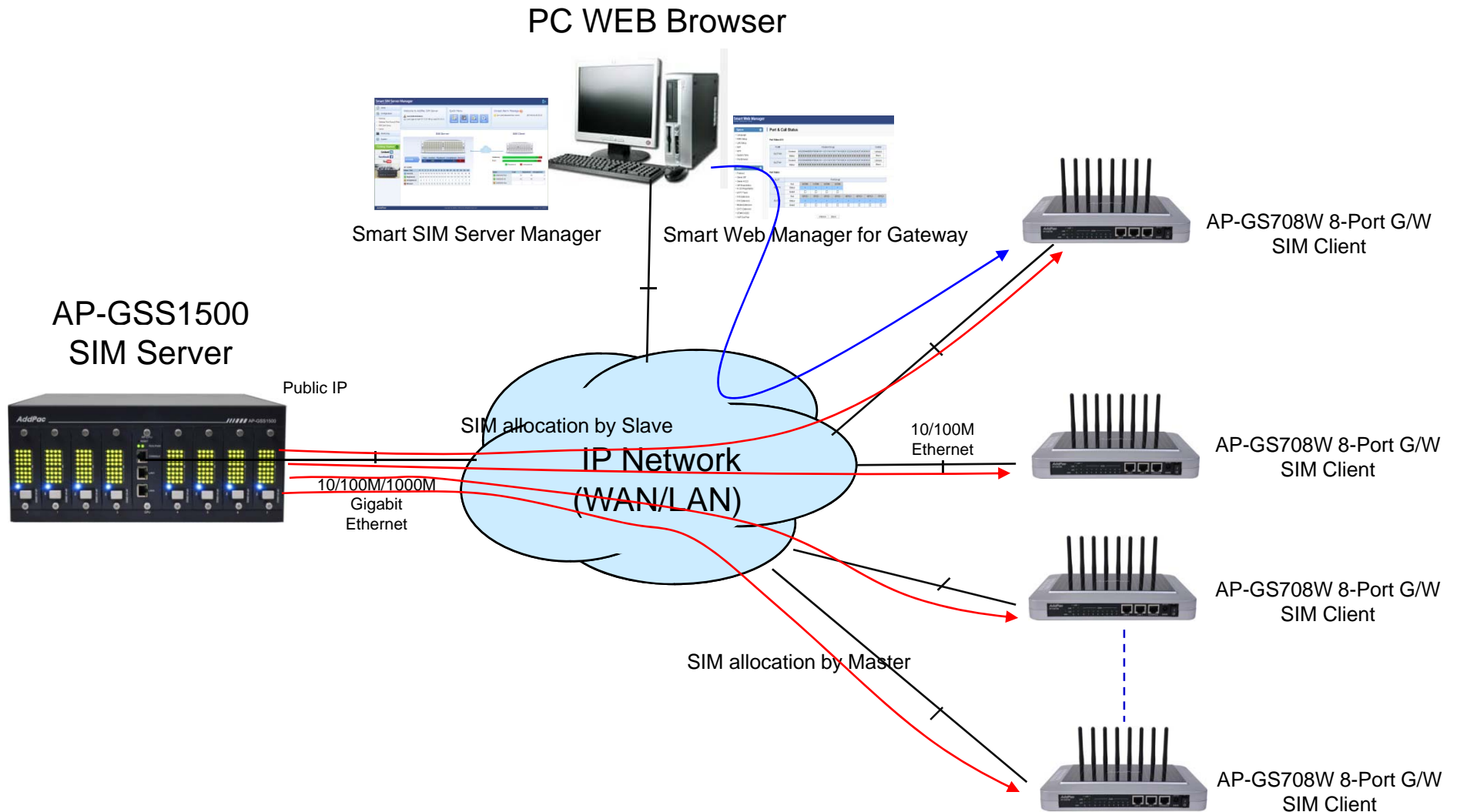
# Contents

- AP-GSS1500 Interworking Service Diagram (example)
  - Phase 1 : 8-Port GSM Gateway 8 EA + 256SIM SIM Server 1EA
  - Phase 2 : 8-Port GSM Gateway 8 EA + 256SIM SIM Server 2EA
- GSM SIM Server Comparison Table
- AddPac 8-Port GSM Gateway for SIM Client
- AddPac 4-Port GSM Gateway for SIM Client



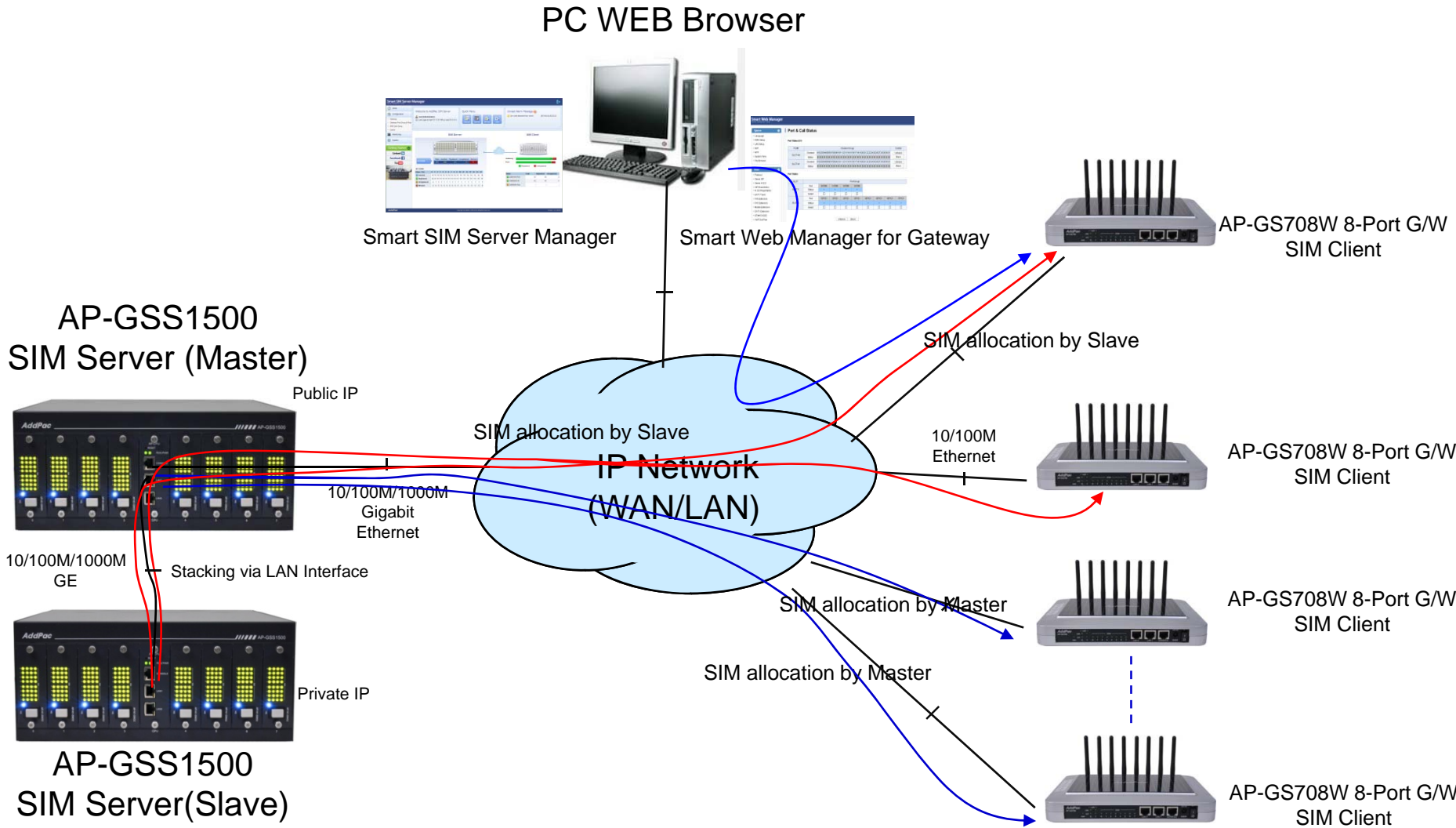
# AP-GSS1500 Interworking Service Diagram

Phase 1 : 256 SIM + 64Port GSM : Quad(4) SIM / a GSM Port



# AP-GSS1500 Interworking Service Diagram

Phase 2 : 512SIM + 64Port GSM : Octal(8) SIM / a GSM Port







**AddPac**

[www.addpac.com](http://www.addpac.com)



# GSM SIM Server Series

# GSM SIM Server Comparison Table

| Model                | AP-GSS5000  | AP-GSS3000   | AP-GSS2000  | AP-GSS1500  |
|----------------------|---|--|---|---|
|                      |      |  |  |  |
| Available Modules    | AP-GSC32F<br>AP-CPU<br>AP-POWER   | AP-GSC32<br>AP-CPU<br>AP-POWER   | AP-GSC32<br>AP-CPU  | AP-N1-SIM32<br>AP-CPU   |
| SIM Bank Module      | AP-GSC32F :<br>32 SIM, Front Insertion Type,<br>Single SIM base exchange,<br>Hot-Swap | AP-GSC32 :<br>32 SIM, Hot-Swap<br>AP-GSC64 :<br>64 SIM, Hot-Swap                   | AP-GSC32 :<br>32 SIM, Hot-Swap  | AP-N1-SIM32:<br>32 SIM, Hot-Swap  |
| Total SIM Cards      | Up to 512 SIM   | Up to 1024SIM  | Up to 256 SIM   | Up to 256 SIM   |
| SIM Bank Module Slot | Sixteen(16) Module Slots for<br>AP-GSC32F   | Sixteen(16) Module Slots<br>for AP-GSC32, AP-<br>GSC64                             | Octal(8) Module Slots for<br>AP-GSC32   | Octal(8) Module Slots for<br>AP-N1-SIM32  |
| LAN Port             | 2   | 2  | 2   | 2   |
| Console              | 1   | 1  | 1   | 1   |
| Power                | Module Type Single PSU  | Module Type Dual PSU   | Single PSU  | Single PSU  |



# AP-GS708W 8-Port GSM Gateway for SIM Client

# Product Overview

## AP-GS708W 8-Port GSM VoIP Gateway

- 8-Port GSM VoIP Gateway Solution
- 8-Port GSM SIM Slot, 8-Port Antenna Interface
- GSM VoIP Interface(LAN) Support
- H.323/SIP Dual Concurrent Stack Embedded
- SIM Client Service for Remote SIM Application
- Auto IMEI change / Auto BTS Change
- High Performance RISC & Programmable DSP Architecture
- Voice Codec G.711/G.726/G.723/G.729, T.38 Fax , VAD, etc
- Powerful Network Protocols (PPPoE, DHCP, Static Routing, etc)
- Two(2) 10/100Mbps Fast Ethernet (IP Share ,etc)
- One(1) RS-232C Port for Command Line Interface
- Firmware Upgradeable Architecture
- Smart NMS for Large Scale Deployment
- Advanced Voice QoS Mechanism
- Light and Compact Design with External Power Supply



# Hardware Specification

AP-GS708W 8-Port GSM VoIP Gateway

RISC  
CPU

High-end  
DSP

- RISC Microprocessor Computing Power
- Powerful High-End DSP for VoIP Interface
- 8-Port GSM VoIP Gateway
- 8-Port SIM Card Slots
- 8-Port GSM Antenna Interface
- Network Interface for VoIP Direct Interface
  - Two(2) 10/100Mbps Fast Ethernet (RJ45)
- RS232C Console Interface for CLI
- Run LED, LAN LED, Port LEDs at Front Side
- Compact and Light Design with External Power Supply

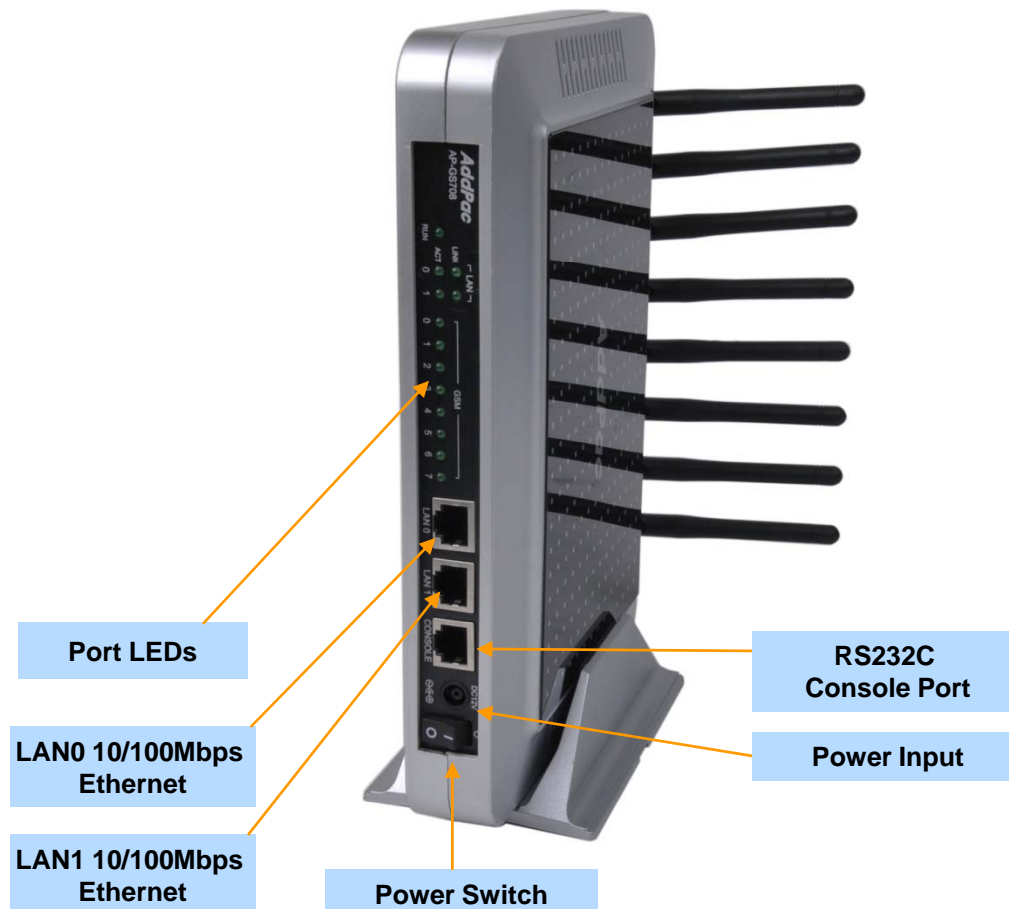
# Hardware Specification

AP-GS708W 8-Port GSM VoIP Gateway

RISC  
CPU

High-end  
DSP

## Front Side View



**AddPac**

[www.addpac.com](http://www.addpac.com)

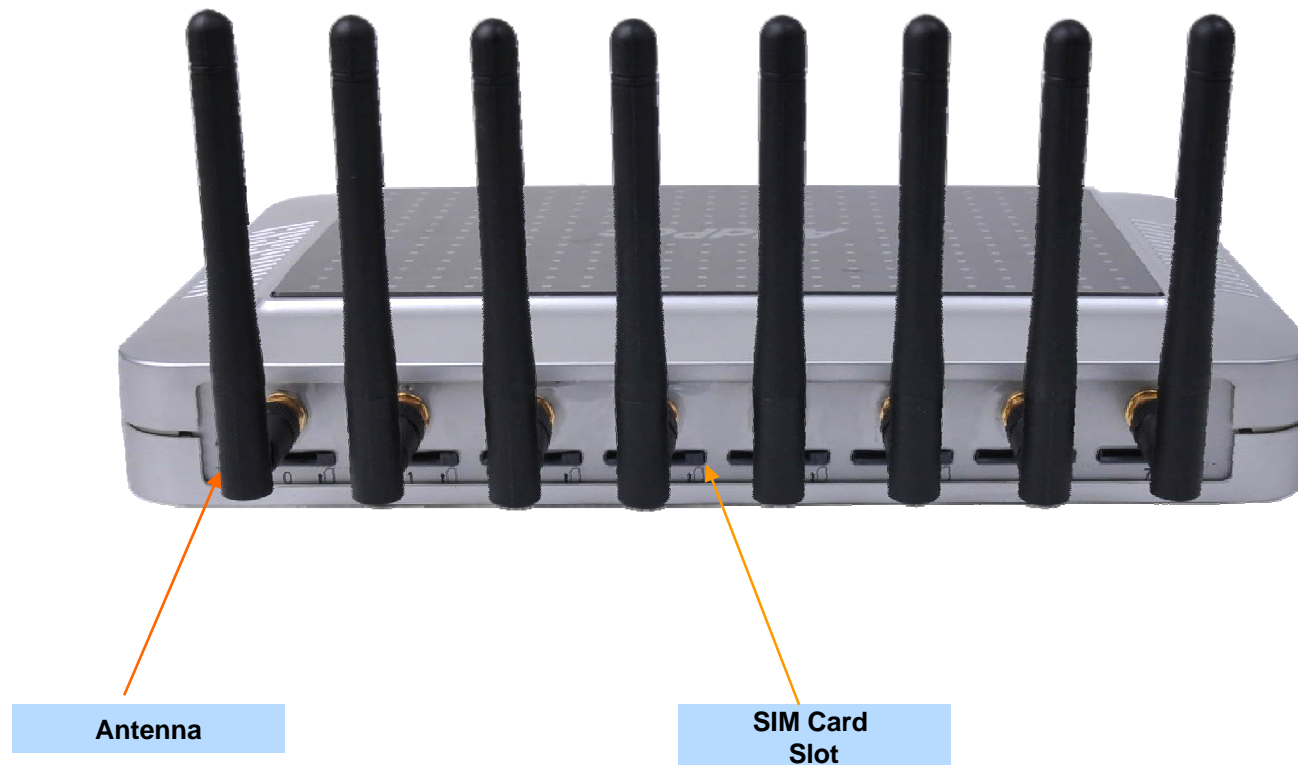
# Hardware Specification

AP-GS708W 8-Port GSM VoIP Gateway

RISC  
CPU

High-end  
DSP

## Back Side View





# AP-GS1004I 4-Port GSM Gateway for SIM Client

# Product Overview

## AP-GS1004I 4-Port GSM Gateway

- Analog Interface (FXS)/VoIP Interface(LAN) Both Support
- 4-Port GSM VoIP Interface (Model A)
- 4-Port GSM VoIP + 4-Port FXS Interface (Model B)
- 4-Port GSM VoIP + 4-Port FXO Interface (Model C)
- H.323/SIP Dual Concurrent Stack Embedded
- SIM Client Service for Remote SIM Application
- Auto IMEI change / Auto BTS Change
- Voice Codec G.711/G.726/G.723/G.729, T.38 Fax , VAD, etc
- Powerful Network Protocols (PPPoE, DHCP, Static Routing, etc)
- One(1) 10/100Mbps Fast Ethernet (IP Share ,etc)
- One(1) RS-232C Port for Command Line Interface
- Firmware Upgradeable Architecture
- Web based Smart Manager
- Advanced Voice QoS Mechanism
- Light and Compact Design with External Power Supply

# Hardware Specification

AP-GS1004I 4-Port GSM Gateway

RISC  
CPU

High-end  
DSP

- RISC Microprocessor Computing Power
- 4-Port GSM VoIP Gateway
- 4-Port SIM Card Slot
- Four(4) GSM Antenna Interface
- Analog Interface
  - 4-Port GSM VoIP : Model A
  - 4-Port GSM VoIP + 4-Port FXS Interface : Model B
  - 4-Port GSM VoIP + 4-Port FXO Interface : Model C
- Network Interface for VoIP Direct Interface
  - One(1) 10/100Mbps Fast Ethernet (RJ45)
- RS232C Console Interface for CLI
- Run LED, LAN LED, Port LEDs
- External Power Supply

# Hardware Specification

AP-GS1004I 4-Port GSM Gateway

RISC  
CPU

High-end  
DSP



**AddPac**

[www.addpac.com](http://www.addpac.com)

15

# Hardware Specification

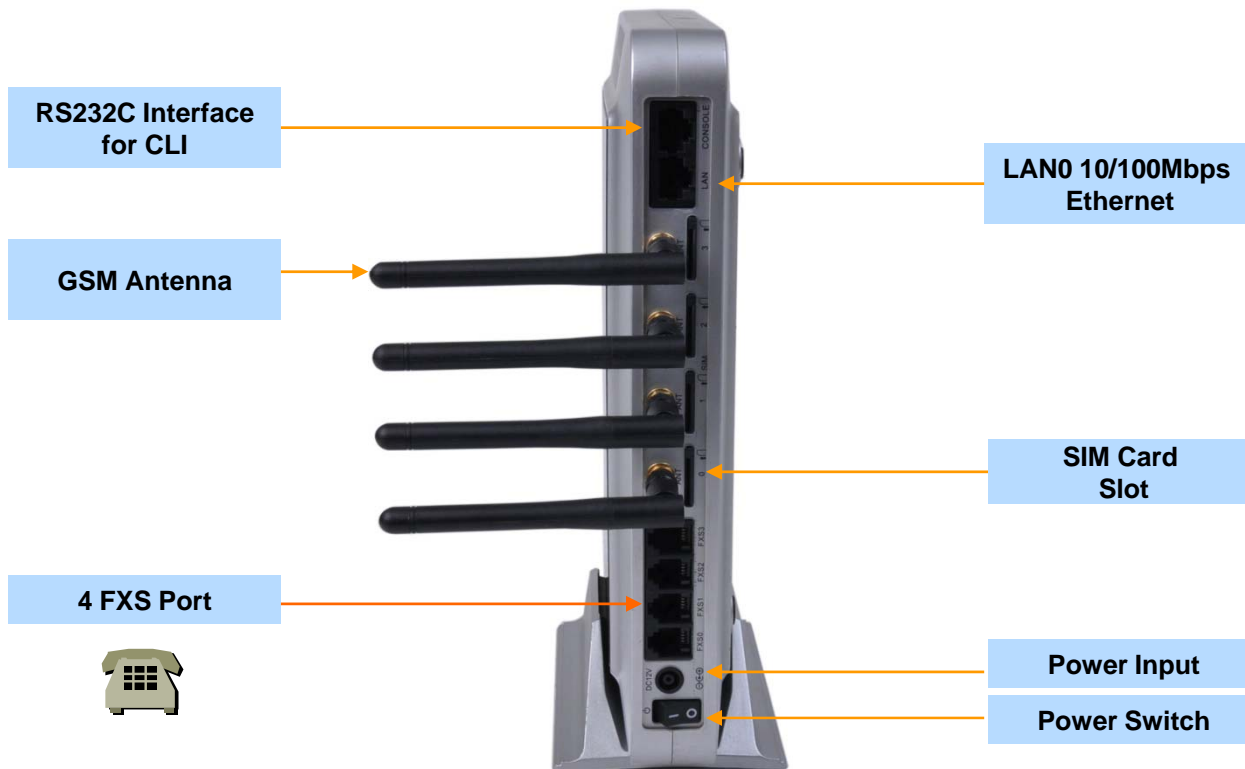
AP-GS1004I 4-Port GSM Gateway

RISC  
CPU

High-end  
DSP

Back Side View

AP-GS1004I Model B







# Thank you!

**AddPac Technology Co., Ltd.**  
Sales and Marketing

Phone +82.2.568.3848 (KOREA)

FAX +82.2.568.3847 (KOREA)

E-mail [sales@addpac.com](mailto:sales@addpac.com)