

AddPac GSM SIM Server Compatible GSM Gateways



AddPac

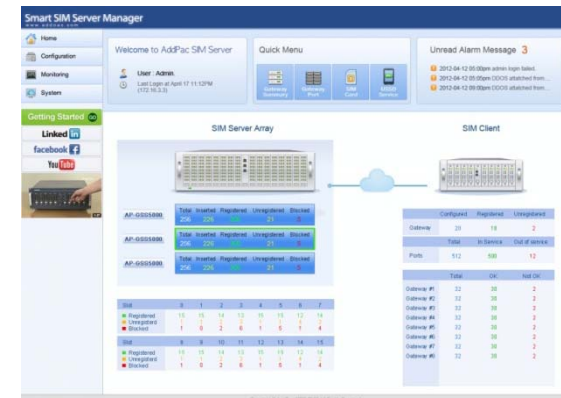
AddPac Technology

2013, Sales and Marketing

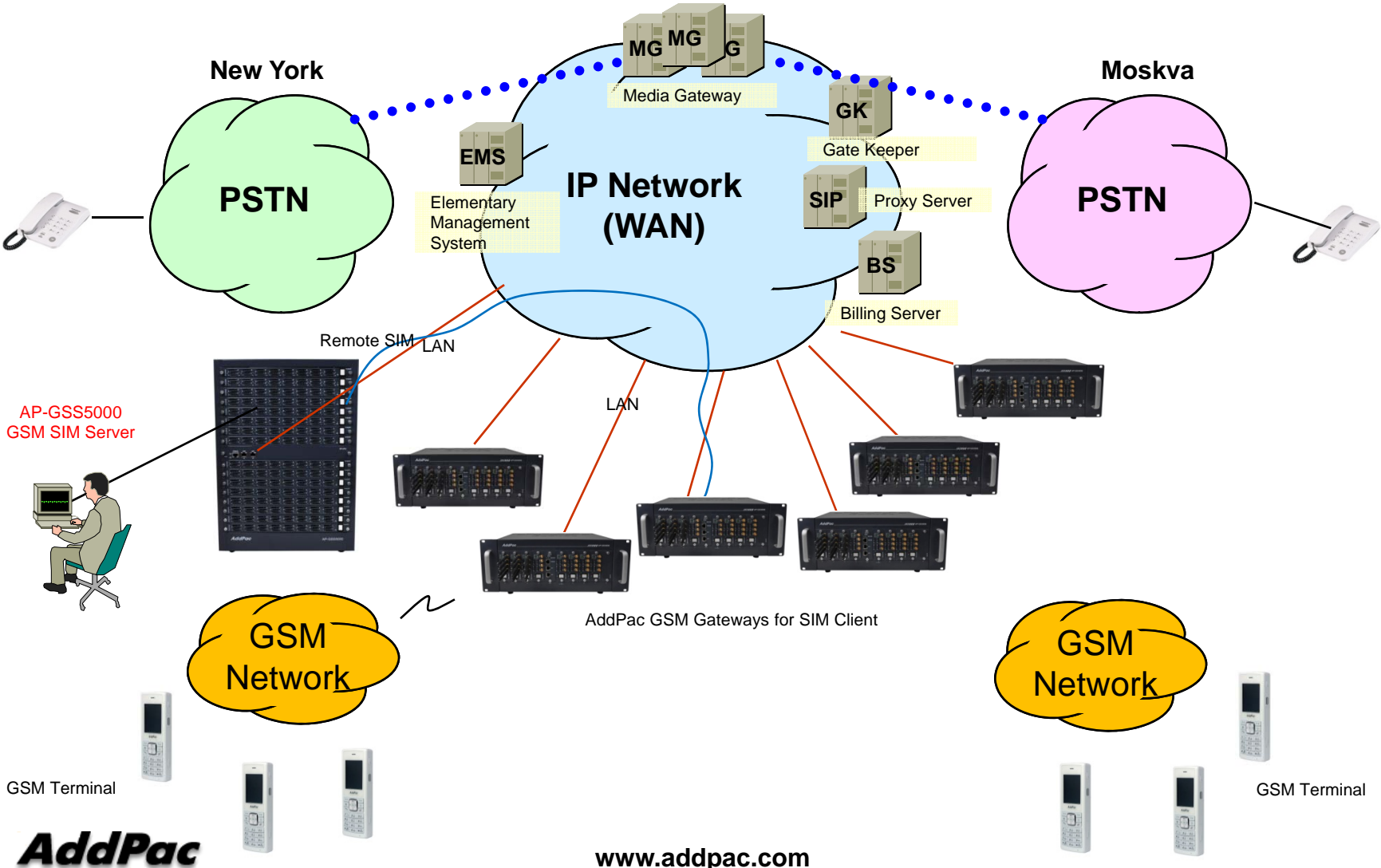
www.addpac.com

Contents

- GSM SIM Server Service Diagram
- GSM SIM Server Comparison Table
- AddPac GSM Gateways for SIM Client







GSM SIM Server Service Diagram





GSM SIM Server Series






GSM SIM Server Comparison Table

Model	AP-GSS5000	AP-GSS3000	AP-GSS2000	AP-GSS1500
				
Available Modules	AP-GSC32F AP-CPU AP-POWER	AP-GSC32 AP-CPU AP-POWER	AP-GSC32 AP-CPU	AP-N1-SIM32 AP-CPU
SIM Bank Module	AP-GSC32F : 32 SIM, Front Insertion Type, Single SIM base exchange, Hot-Swap	AP-GSC32 : 32 SIM, Hot-Swap AP-GSC64 : 64 SIM, Hot-Swap	AP-GSC32 : 32 SIM, Hot-Swap	AP-N1-SIM32: 32 SIM, Hot-Swap
Total SIM Cards	Up to 512 SIM	Up to 1024SIM	Up to 256 SIM	Up to 256 SIM
SIM Bank Module Slot	Sixteen(16) Module Slots for AP-GSC32F	Sixteen(16) Module Slots for AP-GSC32, AP- GSC64	Octal(8) Module Slots for AP-GSC32	Octal(8) Module Slots for AP-N1-SIM32
LAN Port	2	2	2	2
Console	1	1	1	1
Power	Module Type Single PSU	Module Type Dual PSU	Single PSU	Single PSU




AddPac GSM Gateways for SIM Client



GSM Gateway Comparison Table(32port ~)

Model	AP-GS3000	AP-GS3500	AP-GS3800	AP-GS4500	AP-GS5000
					
Available Modules	AP-N1-GSM4 AP-N1-FXS8 AP-N1-FXO8 AP-N1-FXS4O4 AP-N1-E1	AP-N1-GSM4 AP-N1-FXS8 AP-N1-FXO8 AP-N1-FXS4O4 AP-N1-E1	AP-N1-GSM4 AP-N1-FXS8 AP-N1-FXO8 AP-N1-FXS4O4 AP-N1-E1	AP-N1-GSM8 AP-N1-FXS8 AP-N1-FXO8 AP-N1-E1 AP-N1-2E1	AP-N1-GSM8 AP-N1-FXS8 AP-N1-FXO8 AP-N1-E1 AP-N1-2E1
GSM Channel	Up to 36 Channel	Up to 36 Channel	Up to 44 Channel	Up to 64 Channel	Up to 80 Channel
GSM Antenna	One(1) / 4 Channel GSM Module (AP-N1-GSM4)	One(1) / 4 Channel GSM Module (AP-N1-GSM4)	One(1) / 4 Channel GSM Module (AP-N1-GSM4)	Two(2) / 8 Channel GSM Module(AP-N3-GSM8)	Two(2) / 8 Channel GSM Module(AP-N1-GSM8)
Module Slot	Nine(9) Module Slots for GSM, E1/T1 Module Slot	Nine(9) Module Slots for GSM, E1/T1 Module Slot	Eleven(11) Module Slots for GSM	Eight(8) Module Slots for GSM, E1/T1 Module Slot	Ten(10) Module Slots for GSM, E1/T1 Module Slot
LAN Port	2	2	2	2	2
Console	1	1	1	1	1
Power	Single PSU	Dual PSU(Module)	Single PSU	Single PSU	Dual PSU (module)



GSM VoIP Gateway Comparison Table(32port ~)

Model	AP-GV2800	AP-GV3000
		
Available Modules	AP-N2-GSM8	AP-N2-GSM8
GSM Channel	Up to 32 Channel	Up to 32 Channel
GSM Antenna	Two(2) / 8 Channel GSM Module(AP-N2-GSM8)	Two(2) / 8 Channel GSM Module(AP-N2-GSM8)
Module Slot	Four(4) Module Slots for GSM	Four(4) Module Slots for GSM
LAN Port	2	2
Console	1	1
Power	Single PSU	Dual PSU (module)

GSM VoIP Gateway Comparison Table(32port ~)

Model	AP-GV3300	AP-GV3200	AP-GV3100
	 	 	 
Available Modules (Only red color module supports SIM client)	AP-N5-GSM8I AP-N5-GSM8UI AP-N5-GSM8SI AP-N5-1E1/T1 AP-N5-2E1/T1	AP-N5-GSM8I AP-N5-GSM8UI AP-N5-GSM8SI AP-N5-1E1/T1 AP-N5-2E1/T1	AP-N5-GSM8I AP-N5-GSM8UI AP-N5-GSM8SI
GSM Channel	Up to 48 Channel	Up to 40 Channel	Up to 32 Channel
Module Slot	Six(6) Module Slots for GSM,E1/T1 Module, etc	Five(5) Module Slots for GSM,E1/T1 Module, etc	Four(4) Module Slots for GSM Module, etc
LAN Port	2	2	2
Console	1	1	1
Power	Single PSU	Single PSU	Single PSU

GSM VoIP Gateway Comparison Table(16port)

Model	AP-GS916	AP-GS1016
		
Available Modules	AP-N1-GSM4I	AP-N5-GSM8I
GSM Channel	Up to 16 Channel	Up to 16 Channel
GSM Antenna	Quad(4)	Octal(8)
Module Slot	Four(4) Module Slots for 4-Port GSM VoIP Interface Module	Two(2) Module Slots for 8-Port GSM VoIP Interface Module
LAN Port	2	2
Console	1	1
Power	Single PSU	Single PSU



Thank you!

AddPac Technology Co., Ltd.
Sales and Marketing

Phone +82.2.568.3848 (KOREA)

FAX +82.2.568.3847 (KOREA)

E-mail sales@addpac.com