

AP-GSS1500 GSM SIM Server Interworking with 16-Port GSM Gateways



AddPac

AddPac Technology

2013, Sales and Marketing

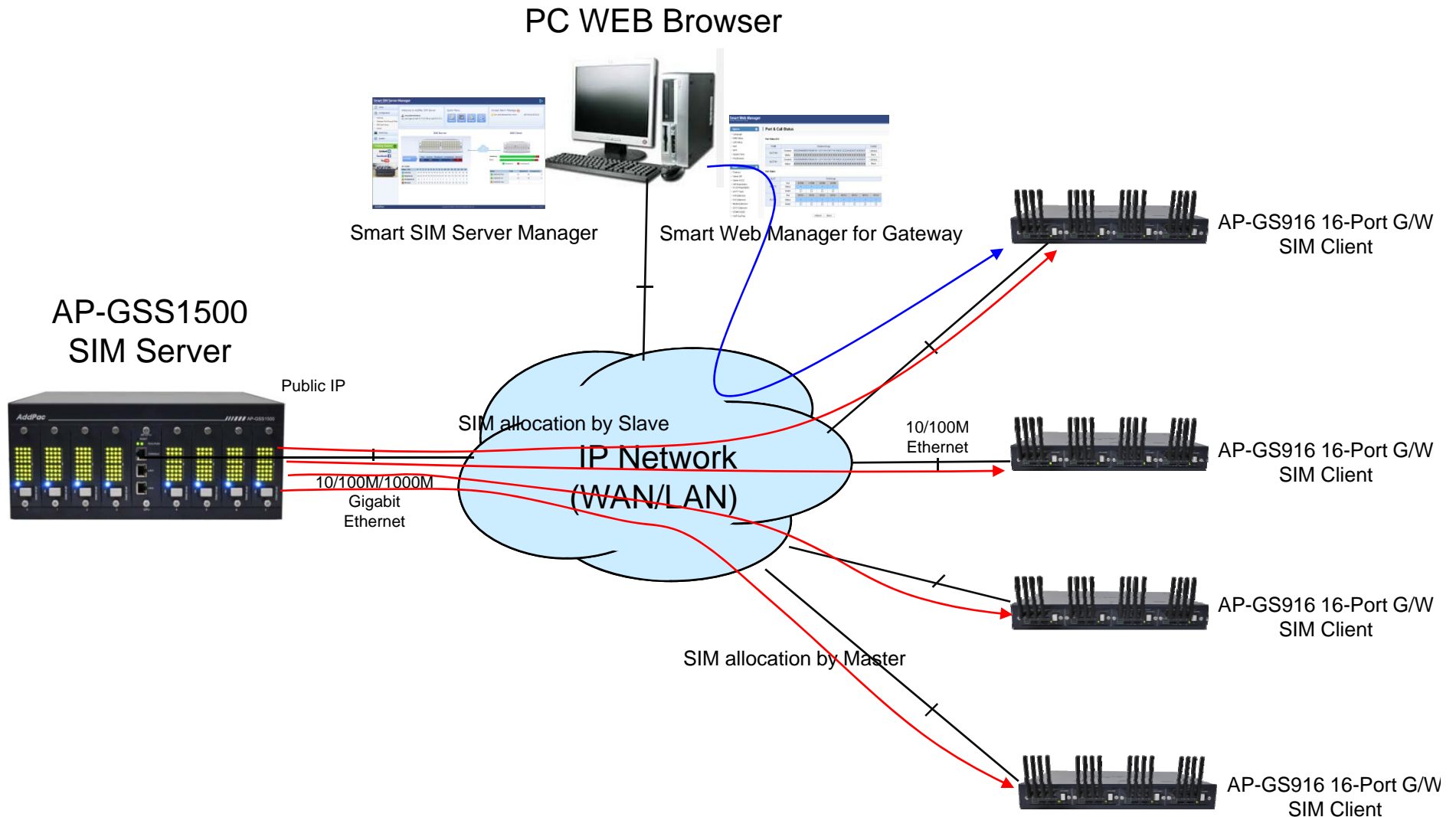
Contents

- AP-GSS1500 Interworking Service Diagram (example)
 - Phase 1 : 16-Port GSM Gateway 4 EA + 256SIM SIM Server 1EA
 - Phase 2 : 16-Port GSM Gateway 4 EA + 256SIM SIM Server 2EA
- GSM SIM Server Comparison Table
- AddPac 16-Port GSM Gateways for SIM Client



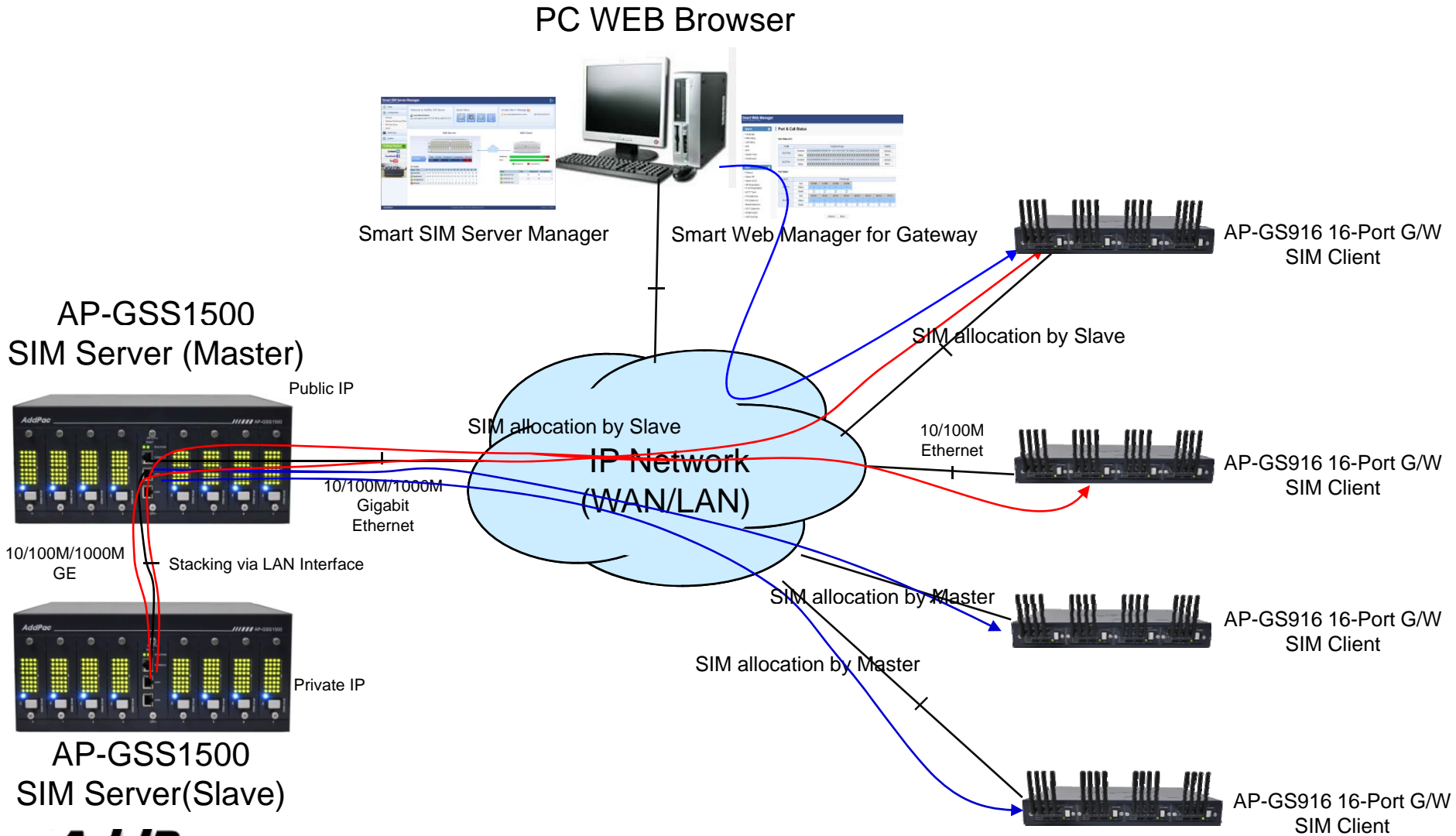
AP-GSS1500 Interworking Service Diagram

Phase 1 : 256 SIM + 64Port GSM : Quad(4) SIM / a GSM Port



AP-GSS1500 Interworking Service Diagram





Phase 2 : 512SIM + 64Port GSM : Octal(8) SIM / a GSM Port





GSM SIM Server Series



GSM SIM Server Comparison Table

Model	AP-GSS5000	AP-GSS3000	AP-GSS2000	AP-GSS1500
				
Available Modules	AP-GSC32F AP-CPU AP-POWER	AP-GSC32 AP-CPU AP-POWER	AP-GSC32 AP-CPU	AP-N1-SIM32 AP-CPU
SIM Bank Module	AP-GSC32F : 32 SIM, Front Insertion Type, Single SIM base exchange, Hot-Swap	AP-GSC32 : 32 SIM, Hot-Swap AP-GSC64 : 64 SIM, Hot-Swap	AP-GSC32 : 32 SIM, Hot-Swap	AP-N1-SIM32: 32 SIM, Hot-Swap
Total SIM Cards	Up to 512 SIM	Up to 1024SIM	Up to 256 SIM	Up to 256 SIM
SIM Bank Module Slot	Sixteen(16) Module Slots for AP-GSC32F	Sixteen(16) Module Slots for AP-GSC32, AP- GSC64	Octal(8) Module Slots for AP-GSC32	Octal(8) Module Slots for AP-N1-SIM32
LAN Port	2	2	2	2
Console	1	1	1	1
Power	Module Type Single PSU	Module Type Dual PSU	Single PSU	Single PSU



AddPac 16-Port GSM Gateways for SIM Client

GSM VoIP Gateway Comparison Table(16port)

Model	AP-GS916	AP-GS1016
		
Available Modules	AP-N1-GSM4I	AP-N5-GSM8I
GSM Channel	Up to 16 Channel	Up to 16 Channel
GSM Antenna	Quad(4)	Octal(8)
Module Slot	Four(4) Module Slots for 4-Port GSM VoIP Interface Module	Two(2) Module Slots for 8-Port GSM VoIP Interface Module
LAN Port	2	2
Console	1	1
Power	Single PSU	Single PSU



AP-GS916

16-Port GSM VoIP Gateway

Product Overview

AP-GS916 16-Port GSM VoIP Gateway

- 16-Port GSM VoIP Gateway Solution
- Four(4) Module Slots for 4-Port GSM Module
- GSM VoIP Interface(LAN) Support
- H.323/SIP Dual Concurrent Stack Embedded
- High Performance RISC & Programmable DSP Architecture
- G.711/G.726/G.723/G.729, T.38 Fax , VAD, etc
- Powerful Network Protocols (PPPoE, DHCP, Static Routing, etc)
- Two(2) 10/100Mbps Fast Ethernet (IP Share ,etc)
- One(1) RS-232C Port for Command Line Interface
- Firmware Upgradeable Architecture
- VPMS (VoIP Plug&Play Management System) for Large Scale Deployment
- Advanced Voice QoS Mechanism
- Light and Compact Design with Internal Power Supply

Hardware Specification

AP-GS916 16-Port GSM VoIP Gateway

RISC
CPU

High-end
DSP

- RISC Microprocessor Computing Power
- Powerful High-End DSP for VoIP Interface
- Four(4) Module Slots for GSM Interface
- 4-Port GSM Module(AP-N1-GSM4I)
 - 4-Port SIM Card Slot
 - 4-Port Antenna Interface
 - Remote SIM Client Support
 - Hot-Swap
- Network Interface for VoIP Direct Interface
 - Two(2) 10/100Mbps Fast Ethernet (RJ45)
- RS232C Console Interface for CLI
- Run LED, LAN LED, Port LEDs at Front Side
- Compact and Light Design with Internal Power Supply

Hardware Specification

AP-GS916 16-Port GSM VoIP Gateway

RISC
CPU

High-end
DSP

Front Side View



LAN0 10/100Mbps
Ethernet

LAN1 10/100Mbps
Ethernet

RS232C
Console Port

Port LEDs

GND

Power Input

Power Switch

Hardware Specification

AP-GS916 16-Port GSM VoIP Gateway

RISC
CPU

High-end
DSP

Back Side View



Antenna

SIM Card
Slot

Hot-Swap
Button

AP-N1-GSM4I 4-Port
GSM Module

GSM Port LED



Thank you!

AddPac Technology Co., Ltd.
Sales and Marketing

Phone +82.2.568.3848 (KOREA)

FAX +82.2.568.3847 (KOREA)

E-mail sales@addpac.com