

# SOHO CDMA Gateway Solution



***AddPac***

**AddPac Technology**

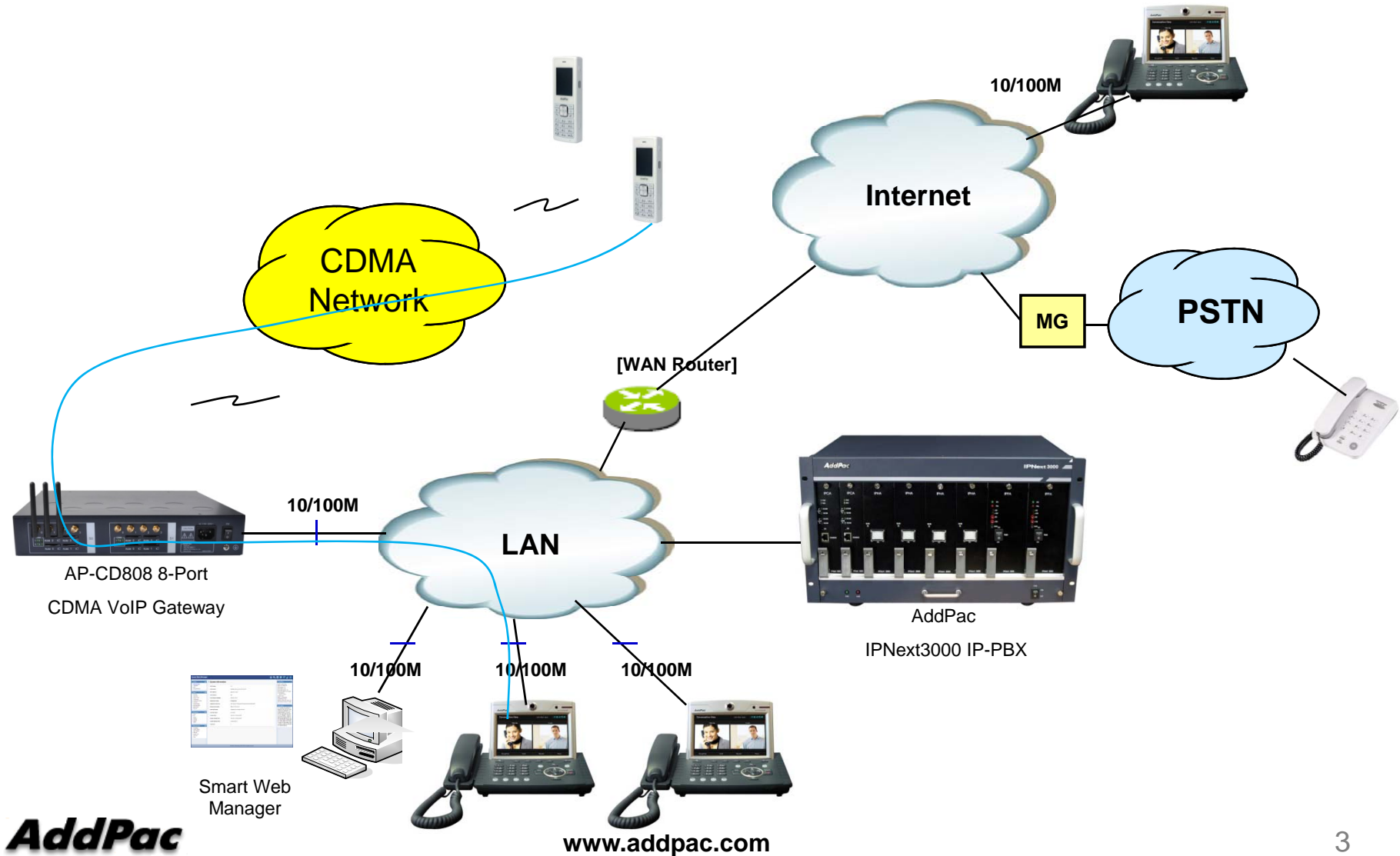
Sales and Marketing

[www.addpac.com](http://www.addpac.com)

# Contents

- SOHO CDMA Gateway Service Diagram
- SOHO CDMA Gateway Series
  - AP-CD818 (16-Port CDMA)
  - AP-CD808 (8-Port CDMA)
  - AP-CD701(1-Port CDMA)
- CDMA Module Specification




# SOHO CDMA Gateway Service Diagram





# SOHO CDMA Gateway Series

# SOHO CDMA Gateway Comparison Table

	AP-CD816	AP-CD808	AP-CD701										
													
Model	None	None	<table border="1"> <tr> <td>Type</td> <td>Analog</td> </tr> <tr> <td>A</td> <td>None</td> </tr> <tr> <td>B</td> <td>1FXS</td> </tr> <tr> <td>C</td> <td>1FXO</td> </tr> <tr> <td>D</td> <td>1FXS,1FXO</td> </tr> </table>	Type	Analog	A	None	B	1FXS	C	1FXO	D	1FXS,1FXO
Type	Analog												
A	None												
B	1FXS												
C	1FXO												
D	1FXS,1FXO												
CDMA Channel	16	8	1										
CDMA Service	CDMA2000 1xRTT (IS-2000)- (Dual Band)	CDMA2000 1xRTT (IS-2000)- (Dual Band)	CDMA2000 1xRTT (IS-2000)- (Dual Band)										
CDMA Band	Band Class0 (TX : 824~849 MHz / RX : 869~894MHz), Band class1 (TX : 1850~1910 MHz / RX : 1930~1990MHz)	Band Class0 (TX : 824~849 MHz / RX : 869~894MHz), Band class1 (TX : 1850~1910 MHz / RX : 1930~1990MHz)	Band Class0 (TX : 824~849 MHz / RX : 869~894MHz), Band class1 (TX : 1850~1910 MHz / RX : 1930~1990MHz)										
SMS Service	IS-637 SMS	IS-637 SMS	IS-637 SMS										
RUIM Card Slot	16	8	1										
10/100Mbps LAN Ports	2	2	1										
Console(RJ45)	1	1	None										



# AP-CD816 (16ch) SOHO CDMA Gateway

# Main Features

## AP-CD816 16-Port CDMA VoIP Gateway

- 16-Port CDMA VoIP Gateway Solution
- 16-Port RUIM Slots
- 16-Port Antenna Interface
- CDMA VoIP Interface(LAN) Support
- H.323/SIP Dual Concurrent Stack Embedded
- High Performance RISC & Programmable DSP Architecture
- G.711/G.726/G.723/G.729, T.38 Fax , VAD, etc
- Powerful Network Protocols (PPPoE, DHCP, Static Routing, etc)
- Two(2) 10/100Mbps Fast Ethernet (IP Share ,etc)
- One(1) RS-232C Port for Command Line Interface
- Firmware Upgradeable Architecture
- VPMS (VoIP Plug&Play Management System) for Large Scale Deployment
- Advanced Voice QoS Mechanism
- Light and Compact Design with Internal Power Supply

# Hardware Specification

AP-CD816 16-Port CDMA VoIP Gateway

RISC  
CPU

High-end  
DSP

- RISC Microprocessor Computing Power
- Powerful High-End DSP for VoIP Interface
- 16-Port CDMA VoIP Gateway
- 16-Port RUIM Card Slots
- 16-Port CDMA Antenna Interface
- Network Interface for VoIP Direct Interface
  - Two(2) 10/100Mbps Fast Ethernet (RJ45)
- RS232C Console Interface for CLI
- Run LED, LAN LED, Port LEDs at Front Side
- Compact and Light Design with Internal Power Supply



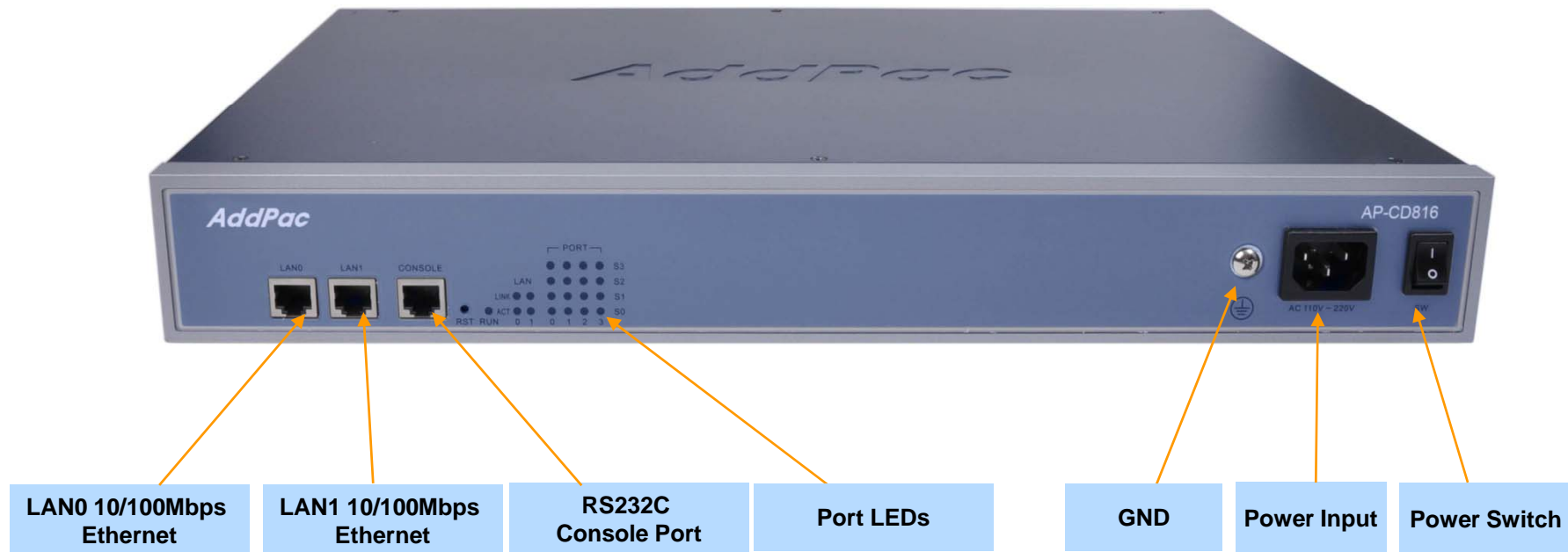
# Hardware Specification

AP-CD816 16-Port CDMA VoIP Gateway

RISC  
CPU

High-end  
DSP

## Front Side View



# Hardware Specification

AP-CD816 16-Port CDMA VoIP Gateway

RISC  
CPU

High-end  
DSP

## Back Side View





# AP-CD808 (8ch) SOHO CDMA Gateway

# Main Features

## AP-CD808 8-Port CDMA VoIP Gateway

- 8-Port CDMA VoIP Gateway Solution
- 8-Port RUIM Slots
- 8-Port Antenna Interface
- CDMA VoIP Interface(LAN) Support
- H.323/SIP Dual Concurrent Stack Embedded
- High Performance RISC & Programmable DSP Architecture
- G.711/G.726/G.723/G.729, T.38 Fax , VAD, etc
- Powerful Network Protocols (PPPoE, DHCP, Static Routing, etc)
- Two(2) 10/100Mbps Fast Ethernet (IP Share ,etc)
- One(1) RS-232C Port for Command Line Interface
- Firmware Upgradeable Architecture
- VPMS (VoIP Plug&Play Management System) for Large Scale Deployment
- Advanced Voice QoS Mechanism
- Light and Compact Design with Internal Power Supply

# Hardware Specification

AP-CD808 8-Port CDMA VoIP Gateway

RISC  
CPU

High-end  
DSP

- RISC Microprocessor Computing Power
- Powerful High-End DSP for VoIP Interface
- 8-Port CDMA VoIP Gateway
- 8-Port RUIM Card Slots
- 8-Port CDMA Antenna Interface
- Network Interface for VoIP Direct Interface
  - Two(2) 10/100Mbps Fast Ethernet (RJ45)
- RS232C Console Interface for CLI
- Run LED, LAN LED, Port LEDs at Front Side
- Compact and Light Design with Internal Power Supply

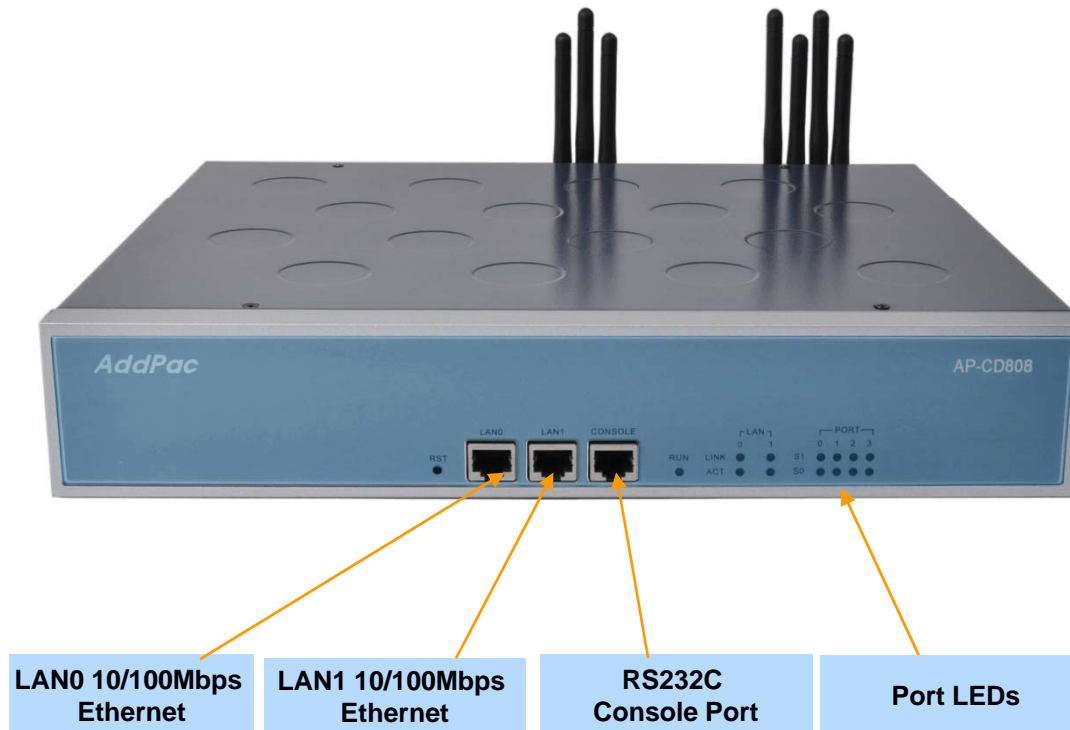
# Hardware Specification

AP-CD808 8-Port CDMA VoIP Gateway

RISC  
CPU

High-end  
DSP

## Front Side View



# Hardware Specification

AP-CD808 8-Port CDMA VoIP Gateway

RISC  
CPU

High-end  
DSP

## Back Side View





# AP-CD701(1ch) SOHO CDMA Gateway



# Main Features

## AP-CD701 1-Port CDMA VoIP Gateway

- Analog Interface (FXS, FXO)/VoIP Interface(LAN) Both Support
- 1-Port CDMA, Analog Interface
- H.323/SIP Dual Concurrent Stack Embedded
- High Performance RISC & Programmable DSP Architecture
- One(1) 10/100Mbps Fast Ethernet (IP Share ,etc)
- High Performance LAN-to-LAN Routing Capability
- G.711/G.726/G.723/G.729, T.38 Fax , VAD, etc
- Powerful Network Protocols (PPPoE, DHCP, Static Routing, etc)
- Firmware Upgradeable Architecture
- VPMS (VoIP Plug&Play Management System) for Large Scale Deployment
- Advanced Voice QoS Mechanism
- Light and Compact Design with External Power Supply

# Hardware Specification

AP-CD701 1-Port CDMA VoIP Gateway

RISC  
CPU

High-end  
DSP

- RISC Microprocessor Computing Power
- 1-Port CDMA Gateway
- 1-Port RUIM Card Slot
- 1-Port Antenna Interface
- VoIP Gateway Interface
  - One(1) FXS Port : Model B
  - One(1) FXO Port : Model C
  - One(1) FXS + One(1) FXO Port : Model E
- Network Interface for VoIP Direct Interface
  - Two(2) 10/100Mbps Fast Ethernet (RJ45) : Model B, Model C
  - One(1) 10/100Mbps Fast Ethernet (RJ45) : Model E
- Run LED, LAN LED, Port LEDs
- External Power Supply

# Hardware Specification

AP-CD701 1-Port CDMA VoIP Gateway

RISC  
CPU

High-end  
DSP



CDMA Antenna  
External Interface



Analog  
Phone

USIM Card  
Slot

1FXO Port

1FXS Port


LAN 10/100Mbps  
Ethernet

Power Input

Power Switch

**AddPac**

[www.addpac.com](http://www.addpac.com)



# CDMA Module Specification

# CDMA Module Specification

- CDMA2000 1xRTT (IS-2000)-(Dual Band)
- Band class0 (TX : 824~849 MHz / RX : 869~894MHz)
- Band class1 (TX : 1850~1910 MHz / RX : 1930~1990MHz)
- GPS L1 Support
- Output Power : 0.25W CDMA
- CDMA2000 Release A
- IS-637 : Short Message Service (Mobile Originated and Mobile Terminated)
- RUIM(for Asia Pacific Countries)



# Thank you!

**AddPac Technology Co., Ltd.**  
Sales and Marketing

Phone +82.2.568.3848 (KOREA)

FAX +82.2.568.3847 (KOREA)

E-mail [sales@addpac.com](mailto:sales@addpac.com)