

# SD Video Conference Camera Solution

AP-SDC100 SD Video Camera

AP-SDC50 SD Video Camera



## AddPac SD Video Conference Camera Solution



***AddPac***

**AddPac Technology**

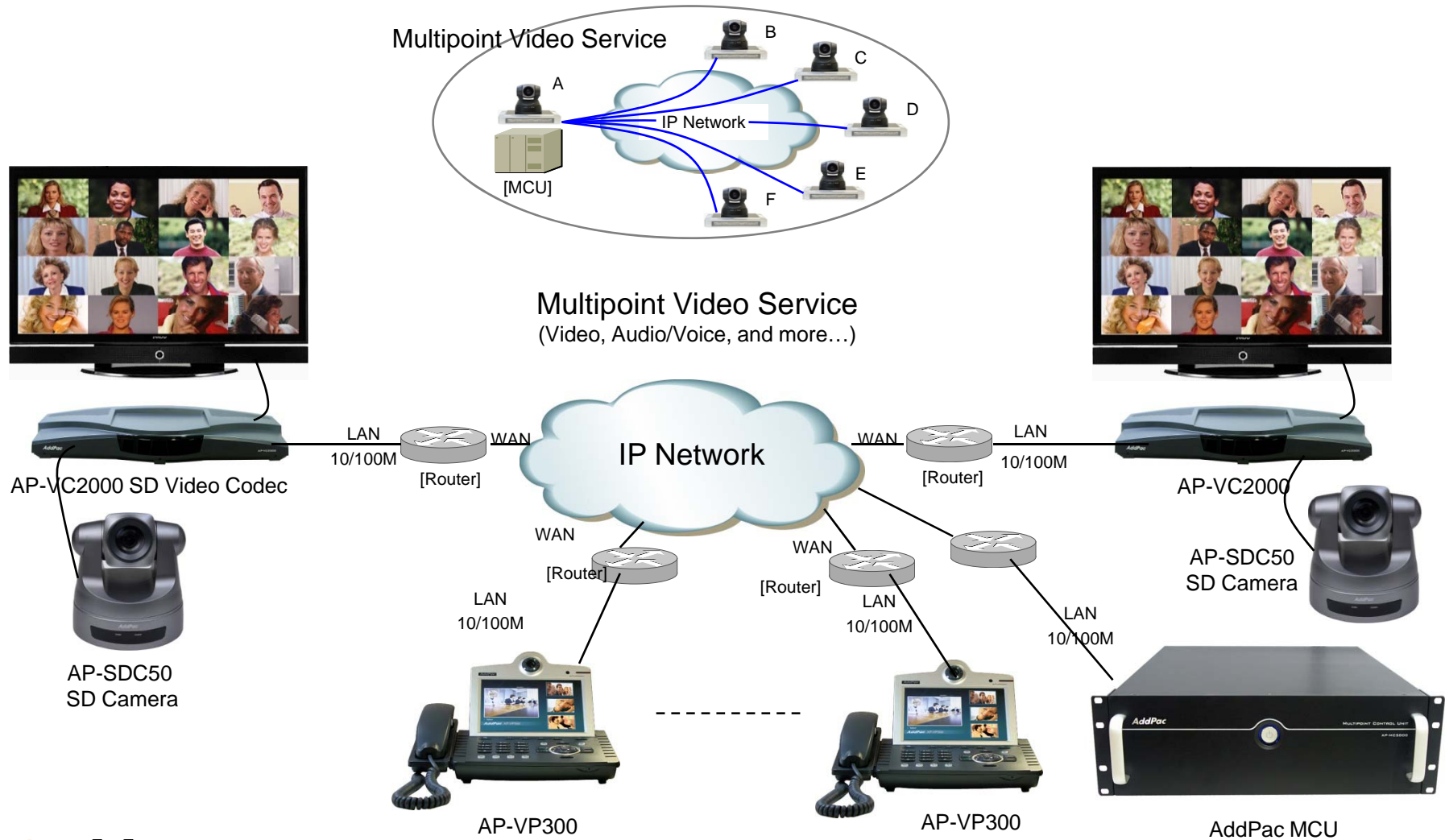
Sales and Marketing

[www.addpac.com](http://www.addpac.com)


# Contents

- SD Camera Service Diagram for Video Conference
- SD Camera Comparison Table
  - AP-SDC100 SD Camera
  - AP-SDC50 SD Camera
- SD Camera Brief Introduction

# SD Camera Service Diagram



# SD Cameras for Video Conference

Product	AP-SDC50	AP-SDC100
		
Sensor	CCD	CCD
Optical Zoom	x27	x37
Video Resolution	D1 (NTSC,PAL)	D1 (NTSC,PAL)
Video Output	CVBS	CVBS
PTZ Control	Support	Support
PTZ Control Interface	RS232/RS485	RS232/RS485
Power	External Power Adaptor	External Power Adaptor



# AP-SDC100 SD Camera

# SD Video Conference Camera

AP-SDC100 SD Video Conference Camera

## Main Features

- High-End SD Video Camera Features
- CCD Sensor
- Various Video Format Support
- PAN/TILT/Zoom Housing Features
- Optical 37 x Zoom Camera
- Various Video Output Interface
  - RCA Video Output Interface
- RS232/RS422/RS485 Interface for External PTZ Camera Control

# SD Video Conference Camera

AP-SDC100 D1 Video Conference Camera

## Hardware Specification

- Camera Specification
  - ¼ Inch, Double Density Interline Transfer CCD
  - NTSC : 768(H) x 494(V), PAL : 752(H) x 583 (V)
  - Auto Focus 37 x Optical Zoom
  - PELCO-D Control Protocol
  - Preset
- Video I/O Interface
  - Composite RCA Video Out Interface
- RS232/RS422/RS485 Interface for External PTZ Control
- IR Interface for Remote Control(Remocon)
- Power ON/OFF Switch

# SD Video Conference Camera

AP-SDC100 D1 Video Conference Camera

## Hardware Specification



Front Side

IR Sensor & Status Indication Area

**AddPac**

[www.addpac.com](http://www.addpac.com)



# SD Video Conference Camera

AP-SDC100 D1 Video Conference Camera

## Hardware Specification

Back Side



Power Inlet  
& Switch

RS232/RS422/RS485  
PTZ Interface

CVBS Output

**AddPac**

[www.addpac.com](http://www.addpac.com)

# SD Video Conference Camera

AP-SDC50 SD Video Conference Camera

## Main Features

- High-End SD Video Camera Features
- 1/4Inch, Super HAD Color CCD Sensor
- Various Video Format Support
- PAN/TILT/Zoom Housing Features
- Optical 27x Zoom Camera
- Various Video Output Interface
  - RCA Video Output Interface
- RS232/RS485 Interface for External PTZ Camera Control

# Hardware Specification

AP-SDC50 SD Video Conference Camera

## Hardware Specification

- Camera Specification
  - ¼ Inch, Super HAD Color CCD
  - NTSC : 768(H) x 494(V), PAL : 752(H) x 583 (V)
  - Auto Focus 27 x Optical Zoom, 12x Digital Zoom
  - S/N (Y Signal) : 50dB
  - PELCO-D Control Protocol
  - Preset
- Video I/O Interface
  - Composite RCA Video Out Interface
- RS232/RS485 Interface for External PTZ Control
- IR Interface for Remote Control(Remocon)
- Power ON/OFF Switch

# Hardware Specification

AP-SDC50 SD Video Conference Camera

## Hardware Specification



Front Side

IR Sensor & Status Indication Area

**AddPac**

[www.addpac.com](http://www.addpac.com)

# Hardware Specification

AP-SDC50 SD Video Conference Camera

## Hardware Specification

Back Side



Power Inlet  
& Switch

CVBS Output



# Thank you!

**AddPac Technology Co., Ltd.**  
Sales and Marketing

Phone +82.2.568.3848 (KOREA)

FAX +82.2.568.3847 (KOREA)

E-mail [sales@addpac.com](mailto:sales@addpac.com)