

SIM Server Advantage Compared to Multi-SIM Gateway

Smart SIM Server Manager
www.addpac.com

Welcome to AddPac SIM Server
root (Administrator)
Last Login at April 18 09:40 AM by root(127.0.0.1)

Quick Menu
Gateway GSM Port SIM Card USSD

Unread Alarm Message
sim card detached from server... 2013-04-24 20:52:23

SIM Server

Total	Inserted	Registered	Unregistered	Blocked
512	500	400	10	2

Getting Started

SIM Client

Gateway : 100% 0%

Port : 100% 0%

Name	Total	Registered	Unregistered
✓ GSM1000 RnD	32	30	2
✓ GSM2000 HQ	32	30	2
⊙ GSM3000 Asta	-	-	-

Copyright © AddPac 1999-2013 All Rights Reserved Version: 1.0.130423

AP-GSS5000

AddPac

AddPac Technology

2013, Sales and Marketing

Contents

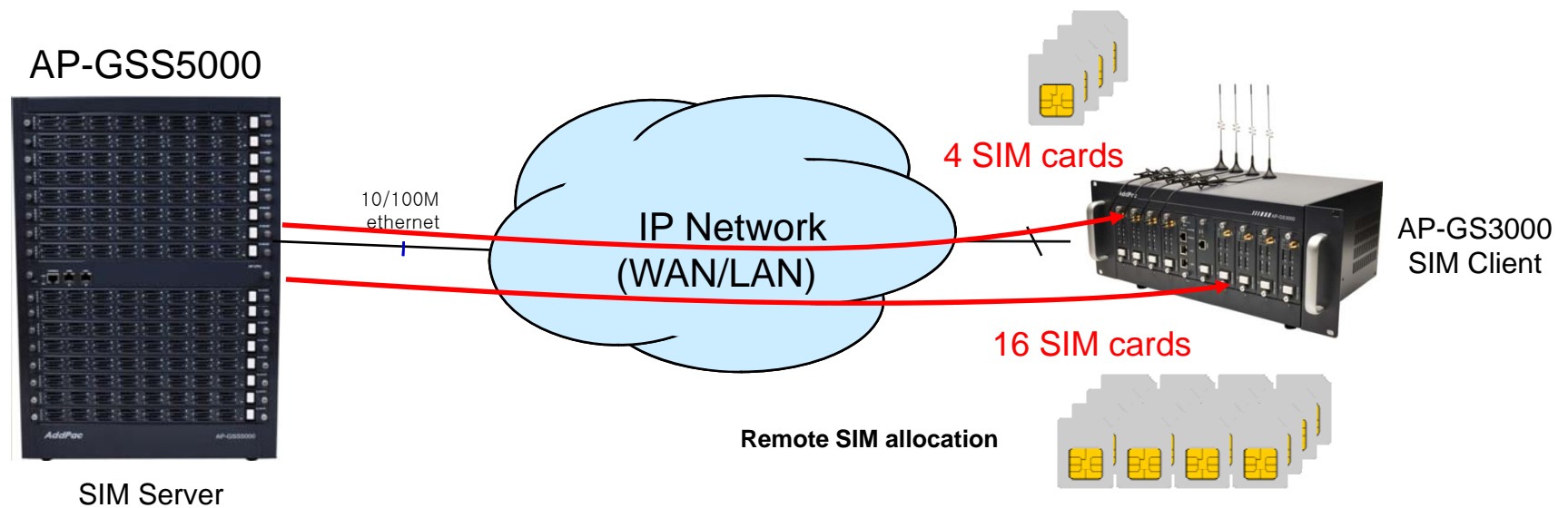
- Flexible SIM Card Grouping
 - Fixed SIM Slots number (Standalone Multi-SIM Gateway)
 - Flexible SIM Slots Assign (SIM Server-SIM Client(GSM Gateway))
- SIM Card Assign Rule Comparison
- SIM Server N:M Assign Model Advantage
- Smart Quota Management
- Smart SIM Block Management
- Centralized Management
 - Multi-Site, Multi-Region Support
 - Multi-GSM Gateway Support
- Emulate Mobile Phone Behavior



AP-GSS1500

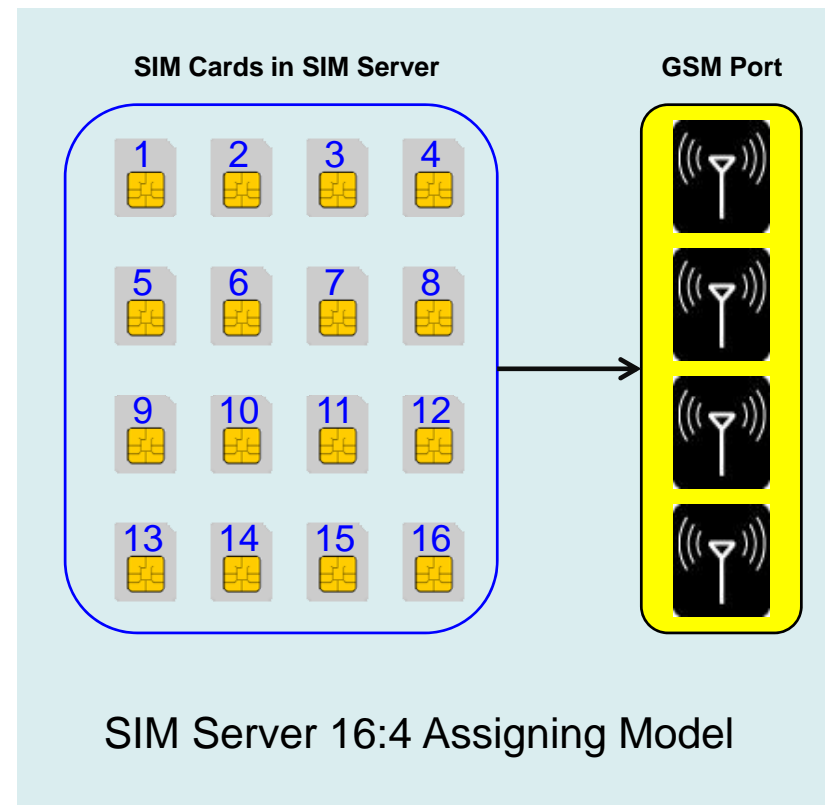
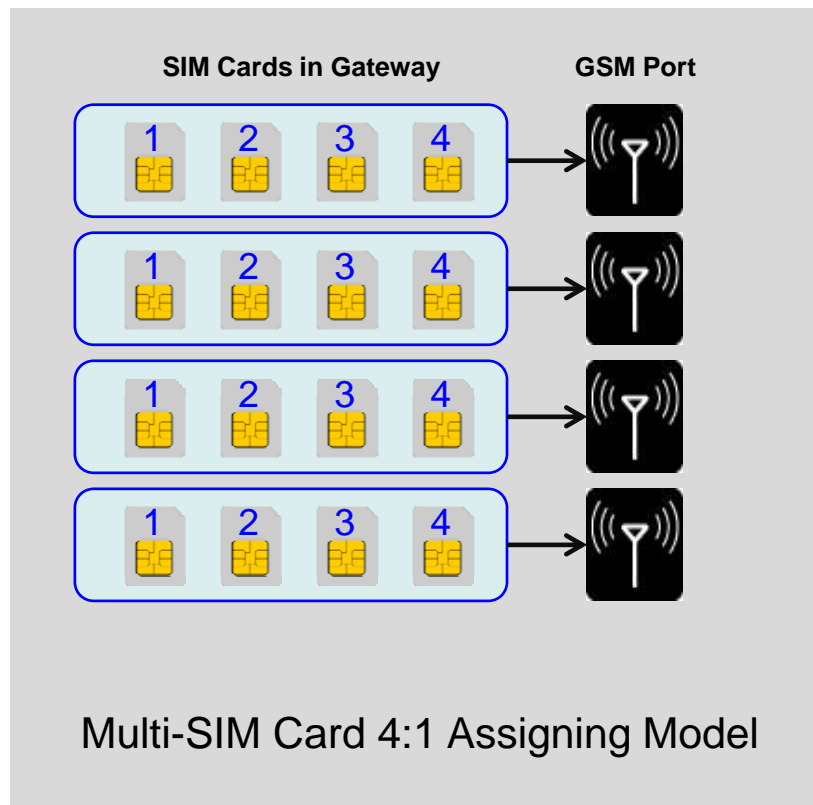
Flexible SIM Card Grouping

- Multi-SIM card can assign fixed number of SIM cards to a GSM port.
- SIM server can assign 1 to 512 SIM cards to a GSM port flexibly.
- (Advantage 1) SIM server provides more efficient SIM card management than Multi-SIM cards.
- (Advantage 2) SIM server decrease SIM block possibility than Multi-SIM cards by rotating lots of SIM cards.



SIM Card Assign Rule Comparison

- Multi-SIM card can assign GSM port to SIM card by 1:N mapping.
- SIM server can assign GSM port to SIM card by N:M mapping.

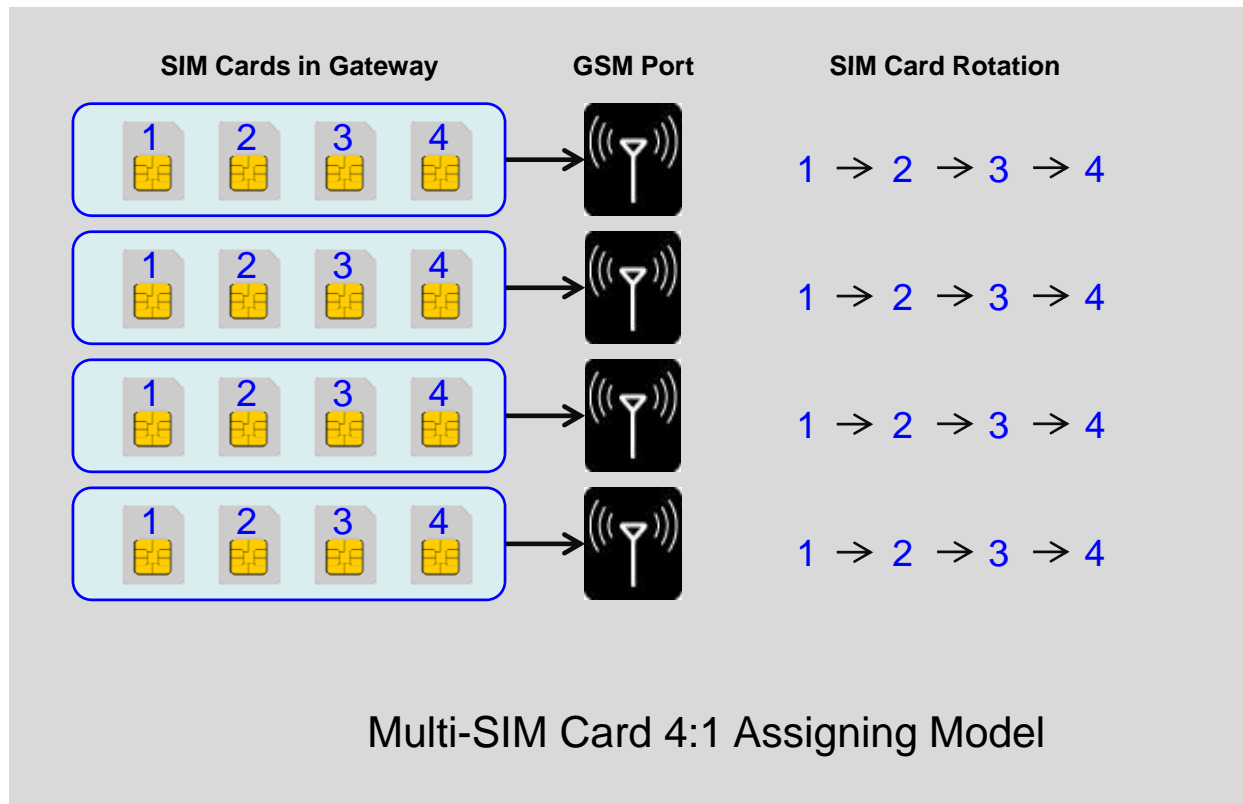


SIM Server's N:M Assigning Model Advantage

- SIM server can assign GSM port to SIM card by N:M mapping and it has following advantages.
- (Advantage 1) SIM server decrease SIM block possibility than Multi-SIM cards by rotating SIM cards to multiple GSM ports.
- (Advantage 2) SIM server increase SIM card and GSM port usage by smart quota management.
- (Advantage 3) SIM server increase SIM card and GSM port availability by smart SIM block management.
- (Advantage 4) SIM server increase SIM card and GSM port usage by smart SIM scheduling management.

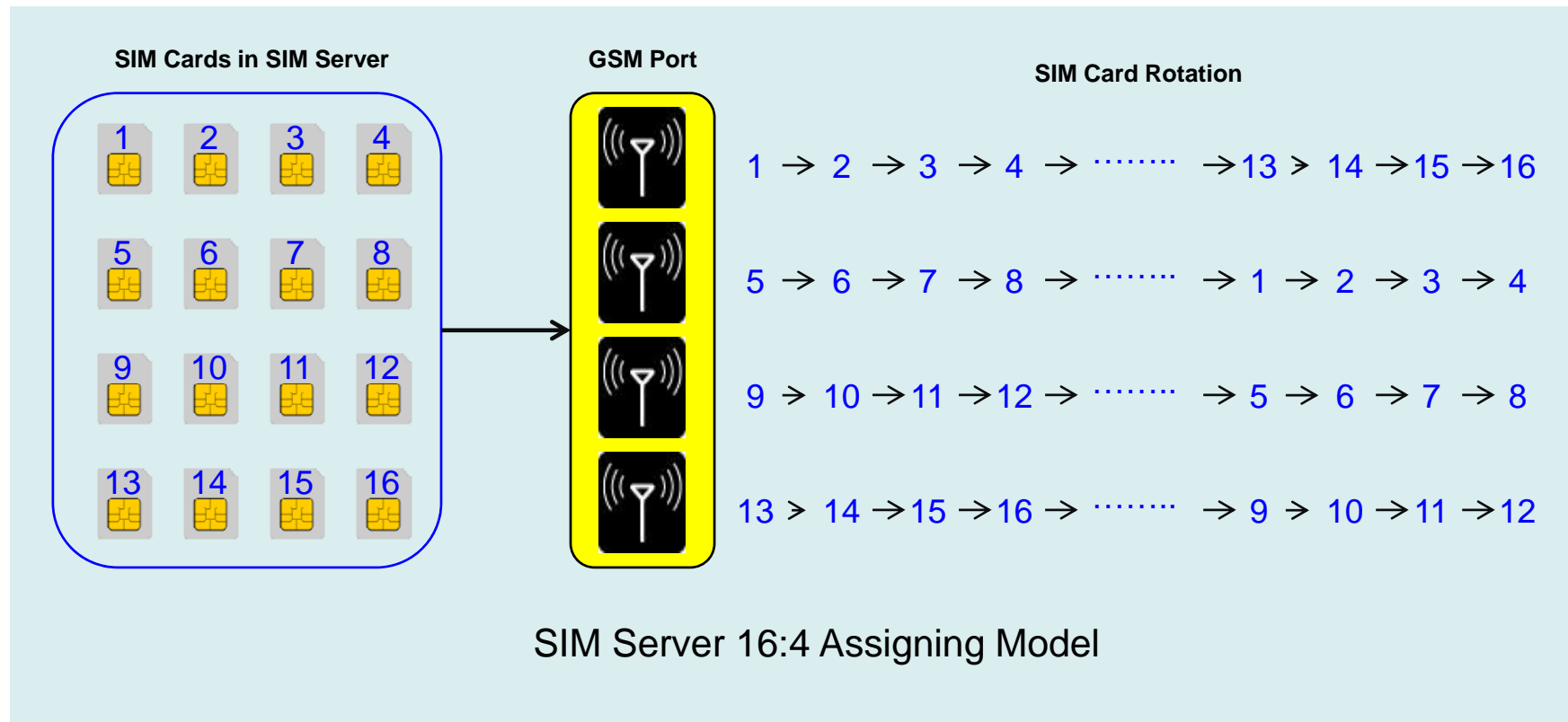
Decrease SIM Blocking (1)

- Multi-SIM card can assign GSM port with fixed SIM cards



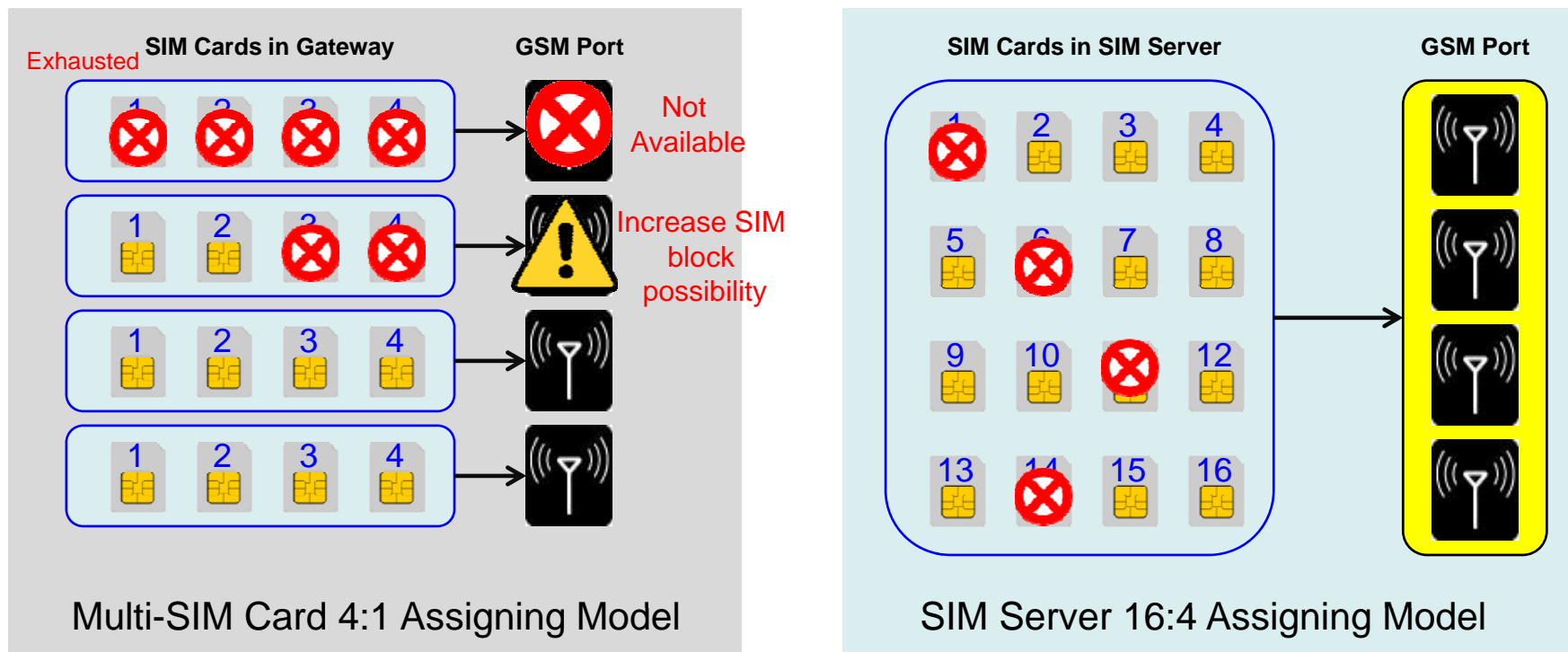
Decrease SIM Blocking (1)

- If SIM Server is used, one GSM port can use more SIM cards.
- More SIM rotation will decrease SIM blocking.



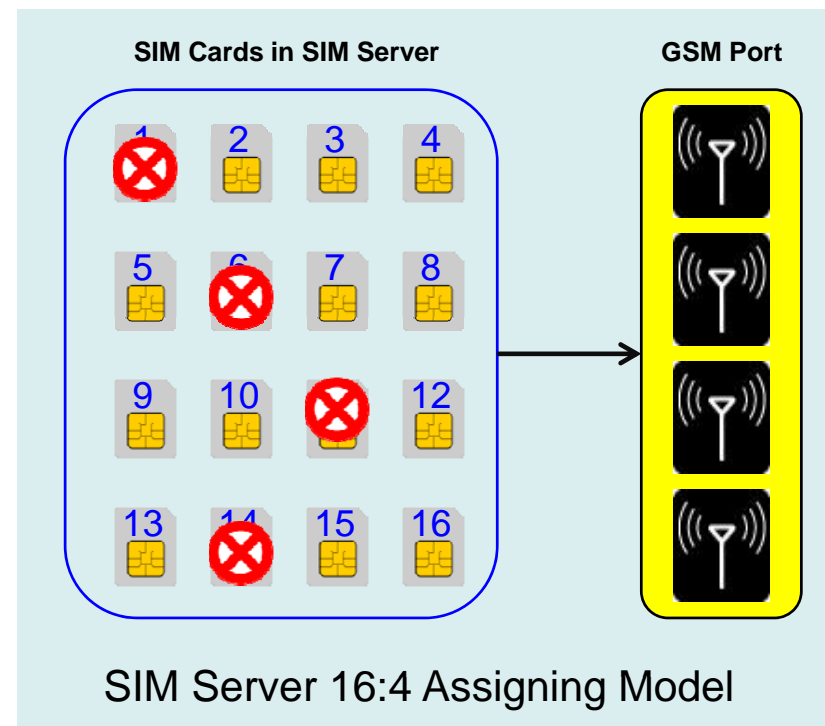
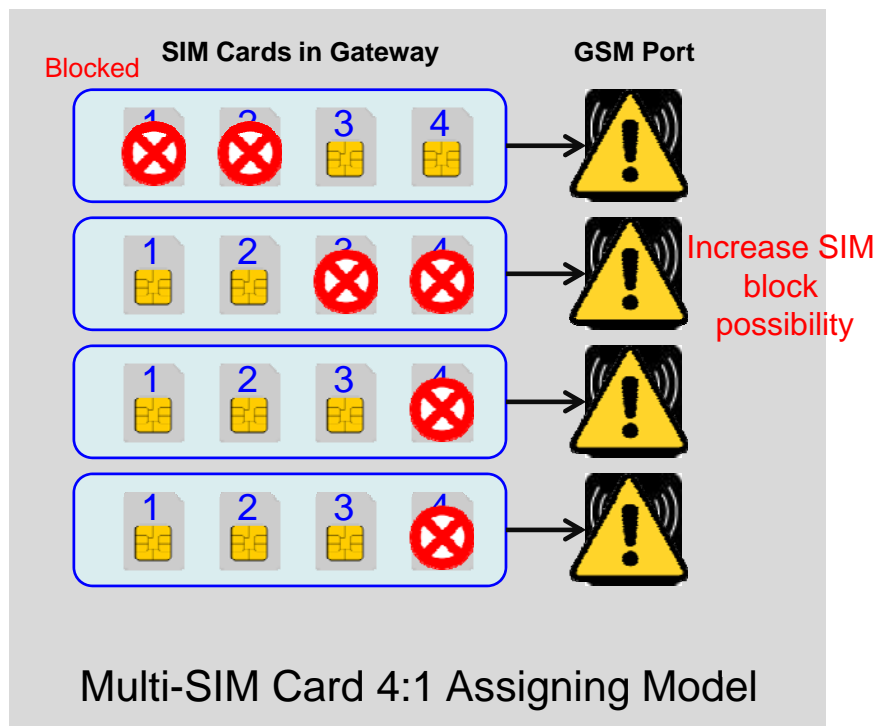
Smart Quota Management

- Fixed SIM cards will exhaust quota faster than SIM server and even GSM port will be not available by exhausted quota.
- SIM server will exhaust quota slower by assigning other available SIM cards and GSM port availability will be increased.



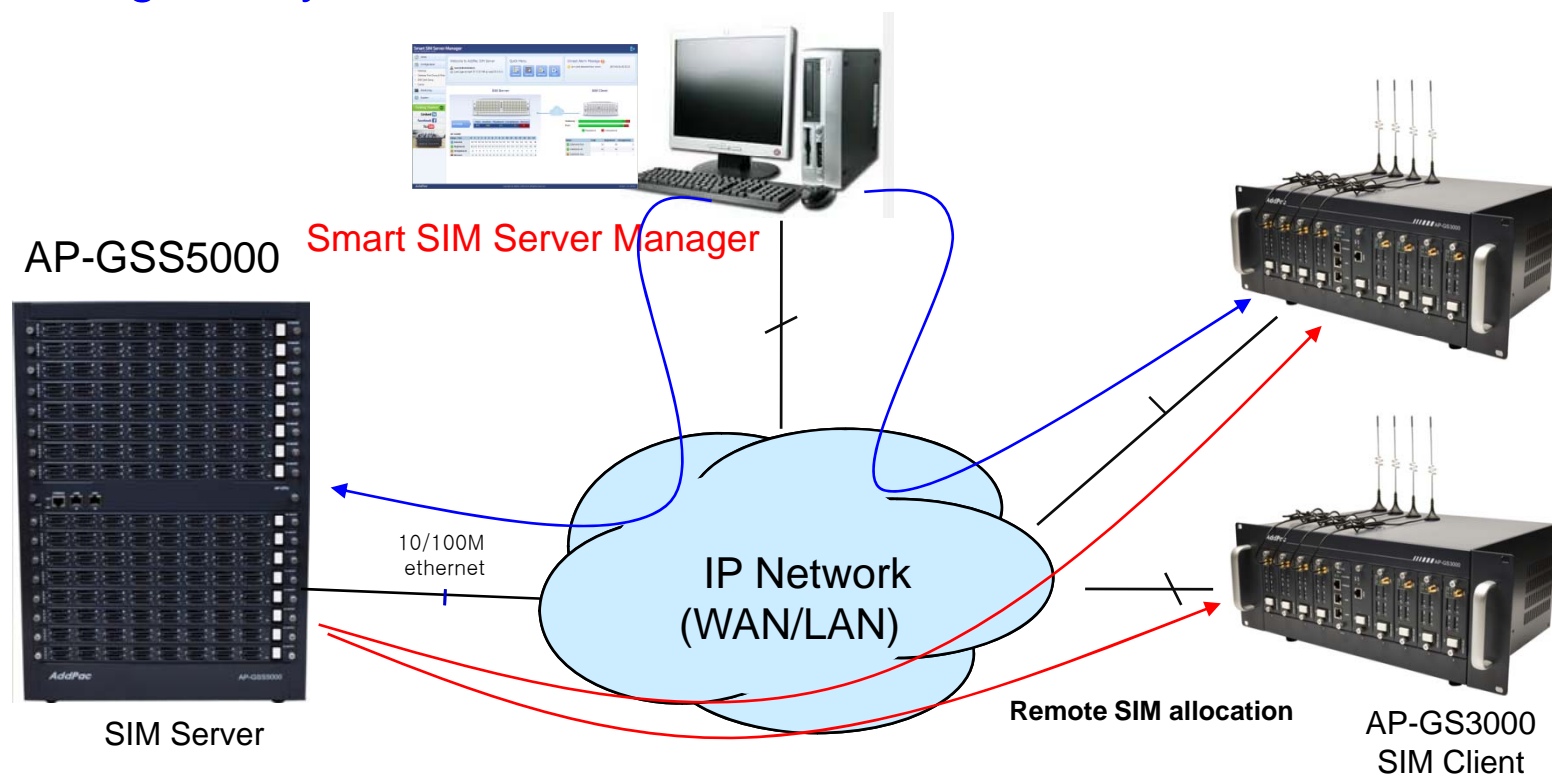
Smart SIM Block Management

- With fixed SIM cards, blocked SIM card make other SIM cards to be blocked by low SIM card rotation.
- SIM server is robust by assigning more available SIM cards to GSM ports.



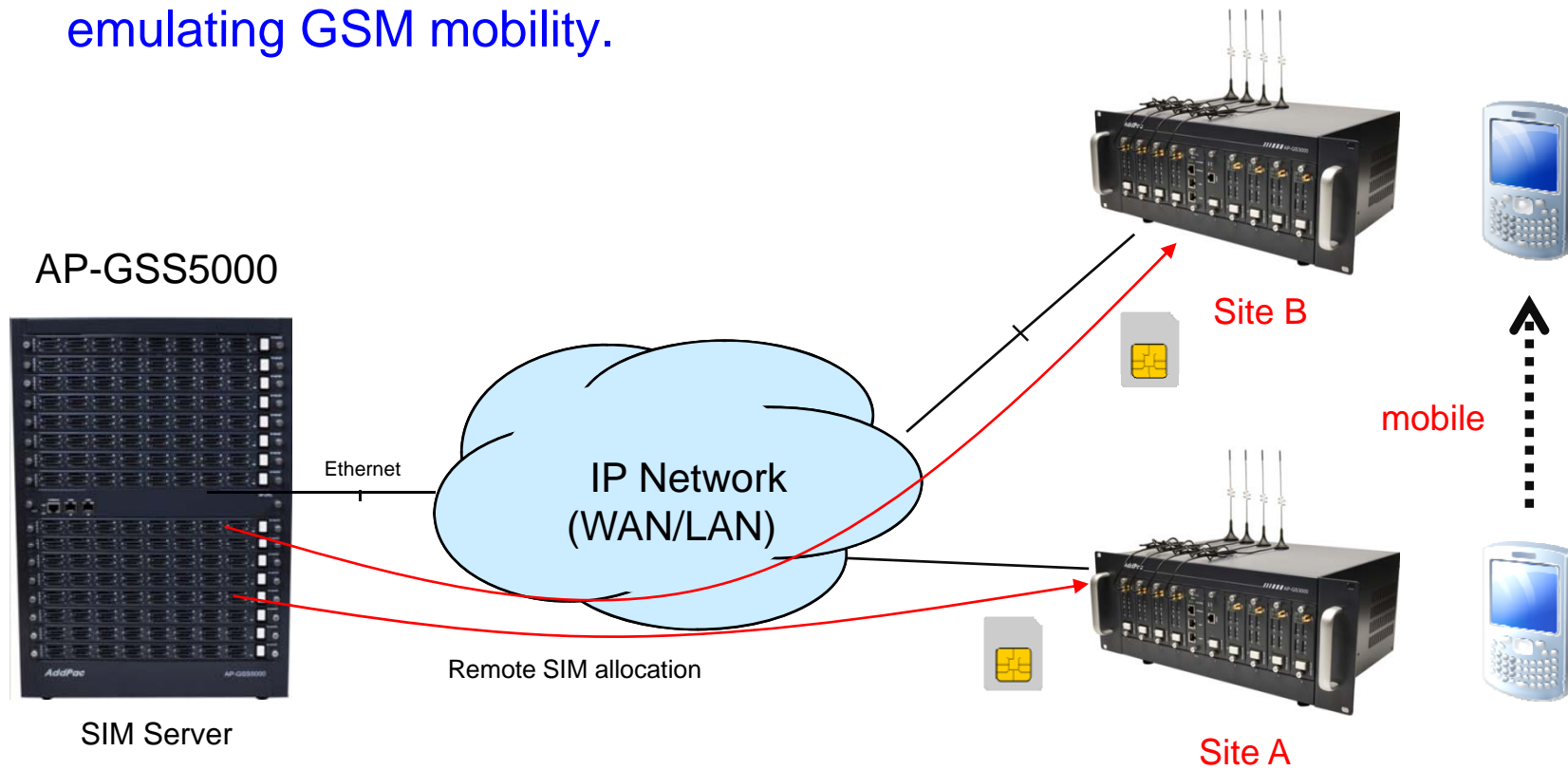
Centralized Management

- SIM server provides centralized SIM card management for multi-site multiple gateway environment.
- (Advantage 3) SIM server decrease management cost for multi-site GSM gateways.



Emulate Mobile Phone Behavior

- SIM server can emulate GSM port mobility by assigning SIM card to remote GSM gateways at several sites.
- (Advantage 4) SIM server decrease SIM block possibility by emulating GSM mobility.





Thank you!

AddPac Technology Co., Ltd.
Sales and Marketing

Phone +82.2.568.3848 (KOREA)

FAX +82.2.568.3847 (KOREA)

E-mail : sales@addpac.com