

AP-GSS3000

1024Ch GSM SIM Server

High Performance GSM SIM Server Solution



AddPac

AddPac Technology

2013, Sales and Marketing

Contents

- Product Overview
- Hardware Specification
- SIM Bank Module Specification
- APOS Technology
- Network Protocols
- Network Management
- Security Management
- Application Service
- Ordering Information



Product Overview

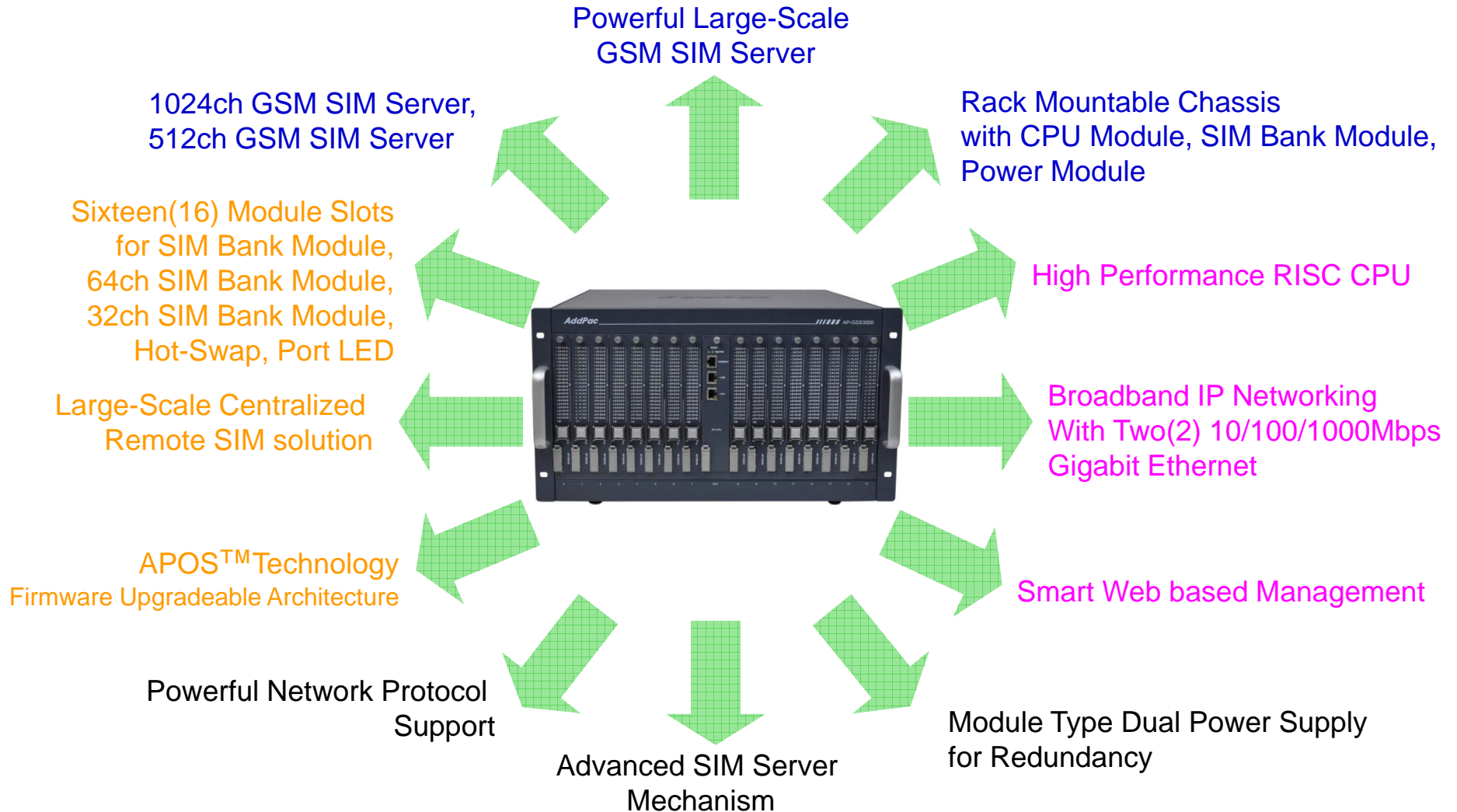
AP-GSS3000 1024ch GSM SIM Server

Main Features

- Sixteen(16) Module Slots for 64ch, 32ch SIM Bank Module (Up to 64x16=1024ch SIM Slot, CPU Module)
- High Performance RISC Microprocessor Architecture
- Remote SIM solution for Centralized Management
- Hot-Swap Service for SIM Bank Module
- Powerful Real-time Response Service using Embedded RTOS
- Powerful Network Protocols (PPPoE, DHCP, Static Routing, etc)
- Two(2)10/100/1000Mbps Gigabit Ethernet
- One(1) RS-232C Port for Command Line Interface
- Firmware Upgradeable Architecture
- Smart Web Manager for SIM Server
- Module Type Dual Power Supply for Redundancy

Product Highlights

AP-GSS3000 1024ch GSM SIM Server

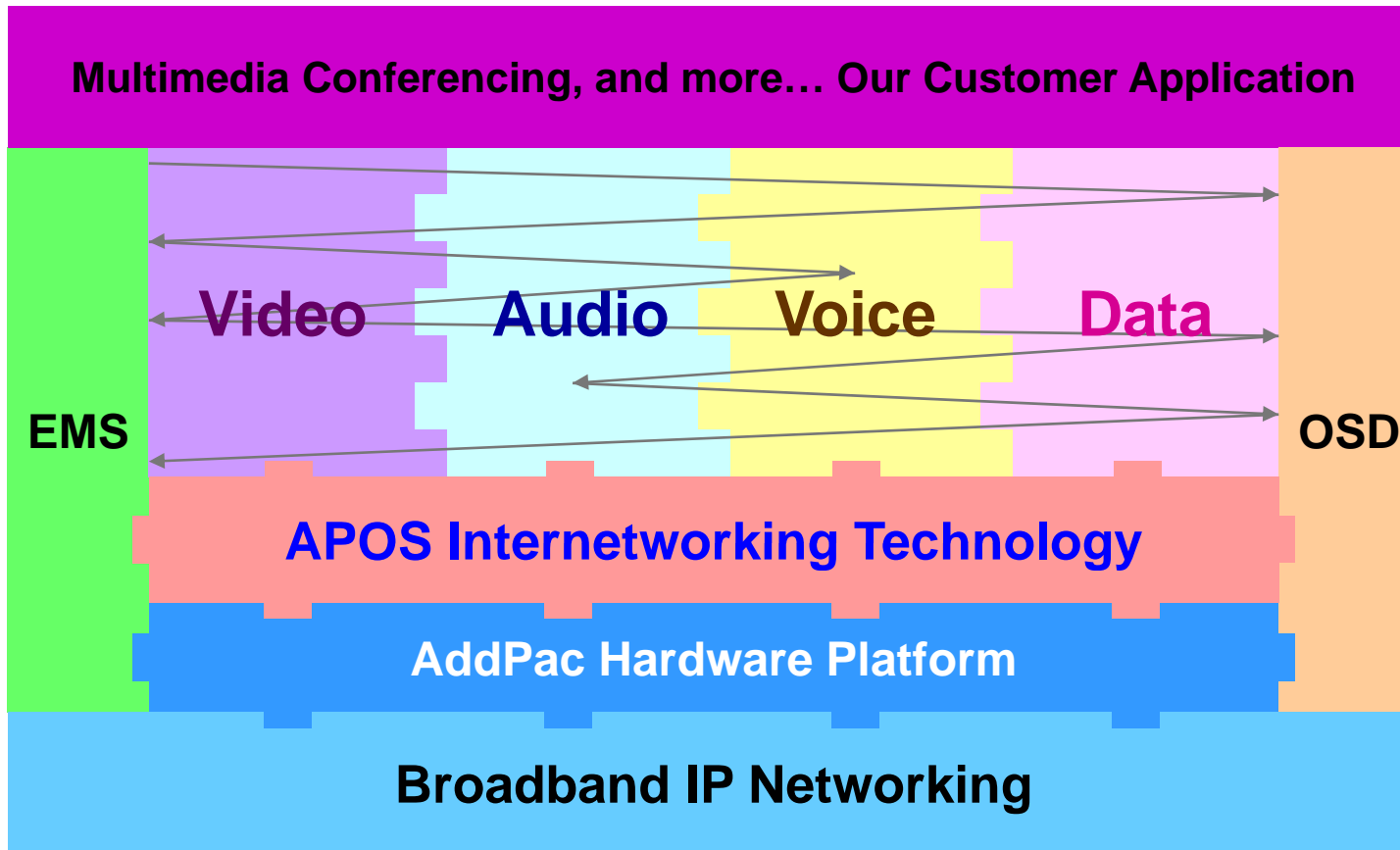


AddPac

www.addpac.com

APOS Technology

AP-GSS3000 1024ch GSM SIM Server



- APOS : AddPac Internetworking Operating System
- OSD : On- Screen Display
- EMS : Element Management System

Hardware Specification

AP-GSS3000 1024ch GSM SIM Server

RISC
CPU

- RISC Microprocessor Computing Power
- High Performance CPU Module
- Sixteen(16) SIM Bank Module Slots
- 64ch GSM SIM Slot Module(AP-GSC64)
 - 64ch SIM Card Slot
 - SIM Slot Status Port LED, Hot-Swap Button
- 32ch GSM SIM Slot Module(AP-GSC64)
 - 64ch SIM Card Slot
 - SIM Slot Status Port LED, Hot-Swap Button
- Network Interface
 - Two(2) 10/100/1000Mbps Gigabit Ethernet (RJ45)
- RS232C Console Interface for CLI
- Run LED, LAN LED, Port LEDs
- Dual Power Supply



Hardware Specification

AP-GSS3000 1024ch GSM SIM Server

RISC
CPU

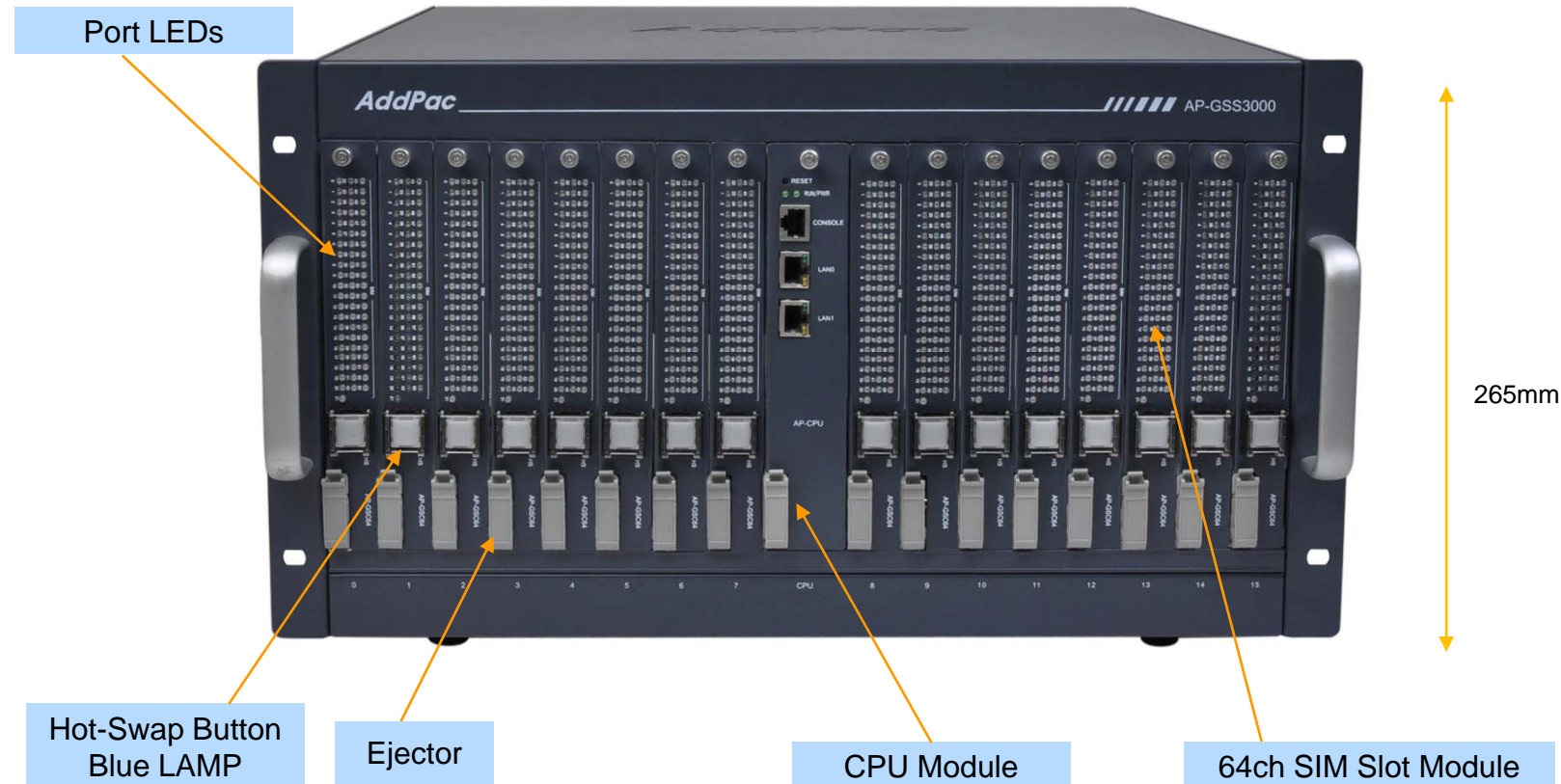
AP-GSS3000 GSM SIM Server	Basic Specifications
GSM SIM Module Interface	Sixteen(16) Module Slots excluding CPU Module
	AP-GSC64 : 64channel GSM SIM Slots , Hot-Swap, Port Status LED
	AP-GSC32 : 32channel GSM SIM Slots, Hot-Swap, Port Status LED
Ethernet Interface	2-Ports 10/100/1000Mbps Gigabit Interface(RJ-45)
Flash Memory	512Mbyte NAND Flash Memory
Base Memory	128Mbyte High-speed DDR2
Power Requirement	Power Supply / VAC 110~220V, 50/60Hz, 5V 30A, Module Type Dual Power Supply
Operating Temperature	0°C ~ 45°C (32 °F ~ 122°F)
Storage Temperature	-40°C ~ 85°C (-40°C ~ 185°F)
Relative Humidity	5% ~ 95% (Non-condensing)
Dimensions	H x W x D (265mm x 490mm x 400mm)
Weight(kg)	16.5Kg

Hardware Specification

AP-GSS3000 1024ch GSM SIM Server

RISC
CPU

Front Side View (64ch SIM Module)



AddPac

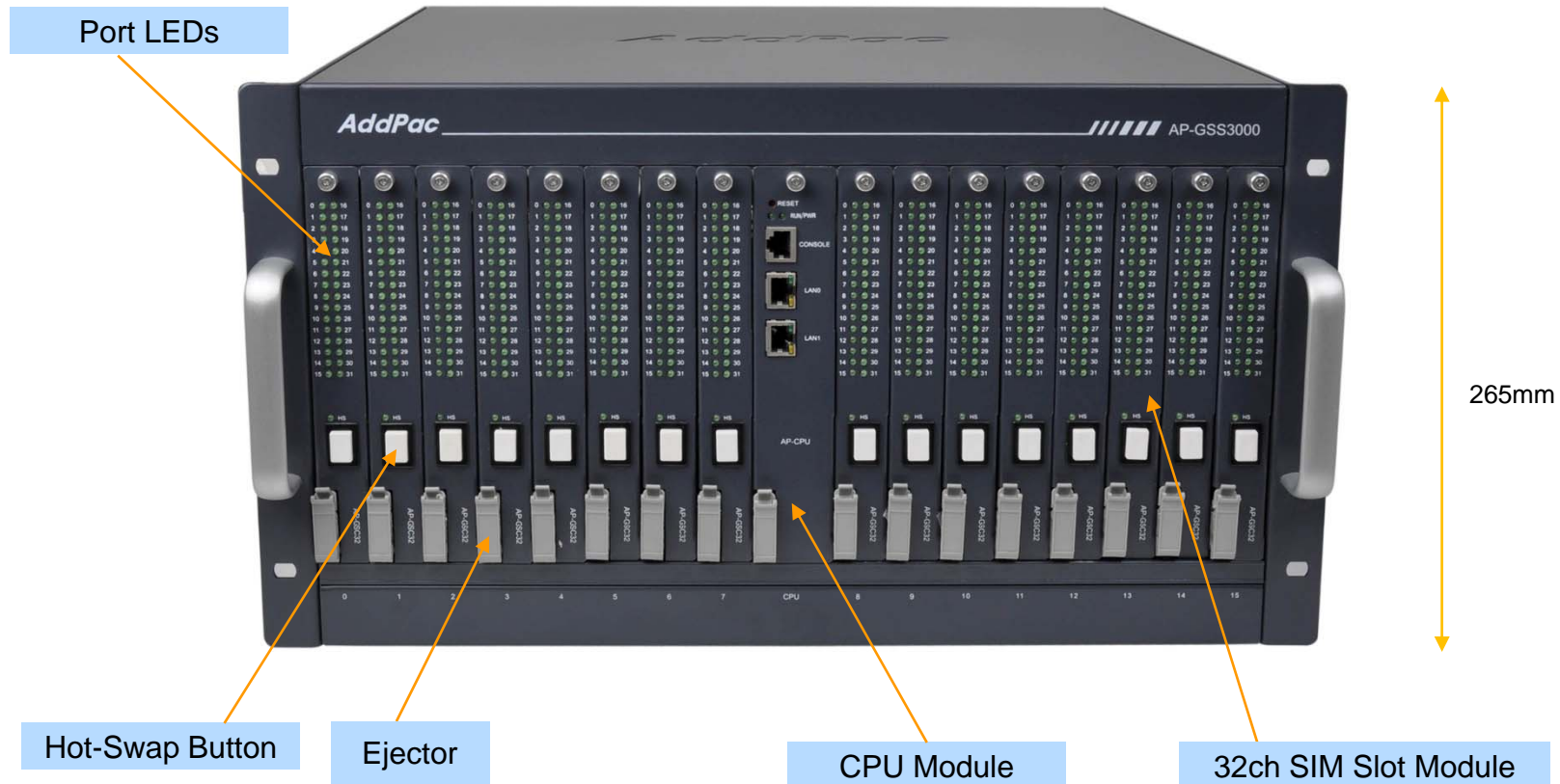
www.addpac.com

Hardware Specification

AP-GSS3000 1024ch GSM SIM Server

RISC
CPU

Front Side View (32ch SIM Module)



AddPac

www.addpac.com

Hardware Specification

AP-GSS3000 1024ch GSM SIM Server

RISC
CPU

Back Side View



Hardware Specification

AP-GSS3000 1024ch GSM SIM Server

SIM Bank Modules

AP-GSC64 64ch GSM SIM Slot Module



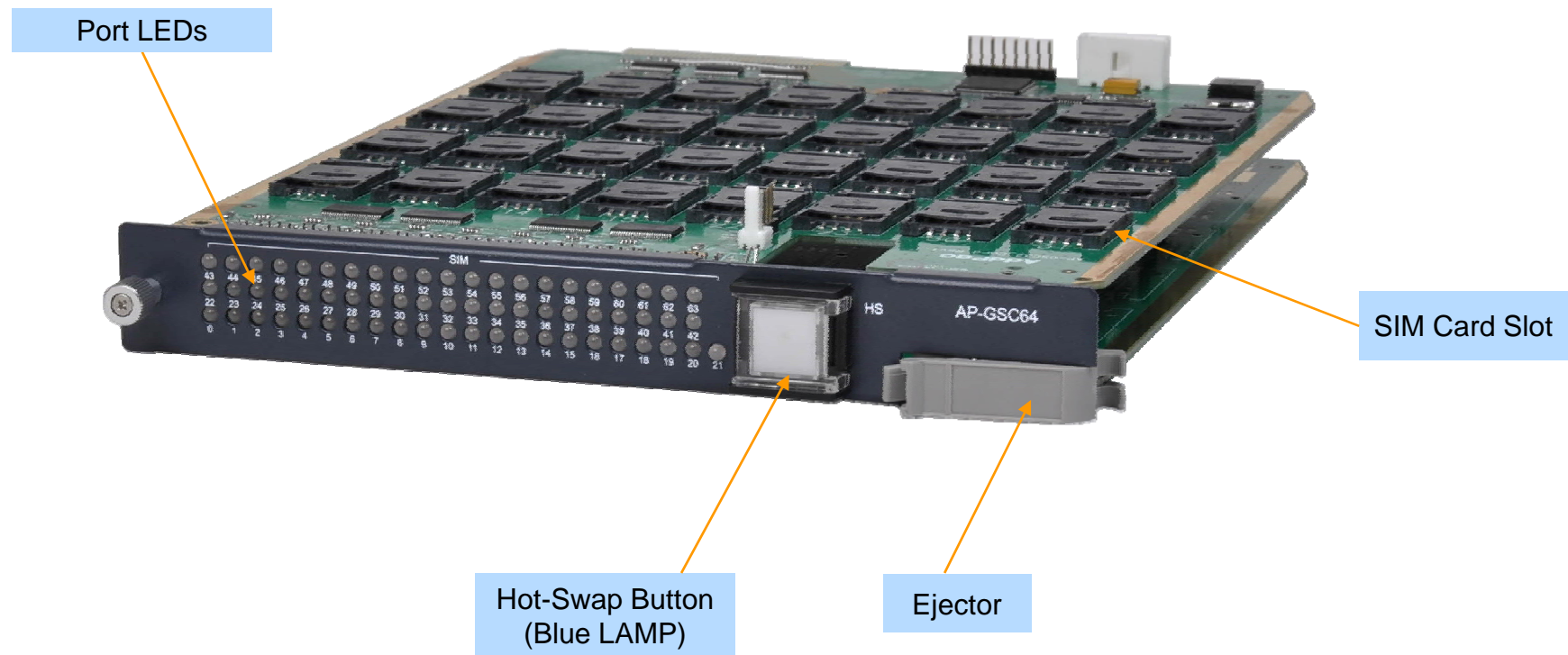
AP-GSC32 32ch GSM SIM Slot Module



Hardware Specification

AP-GSS3000 1024ch GSM SIM Server

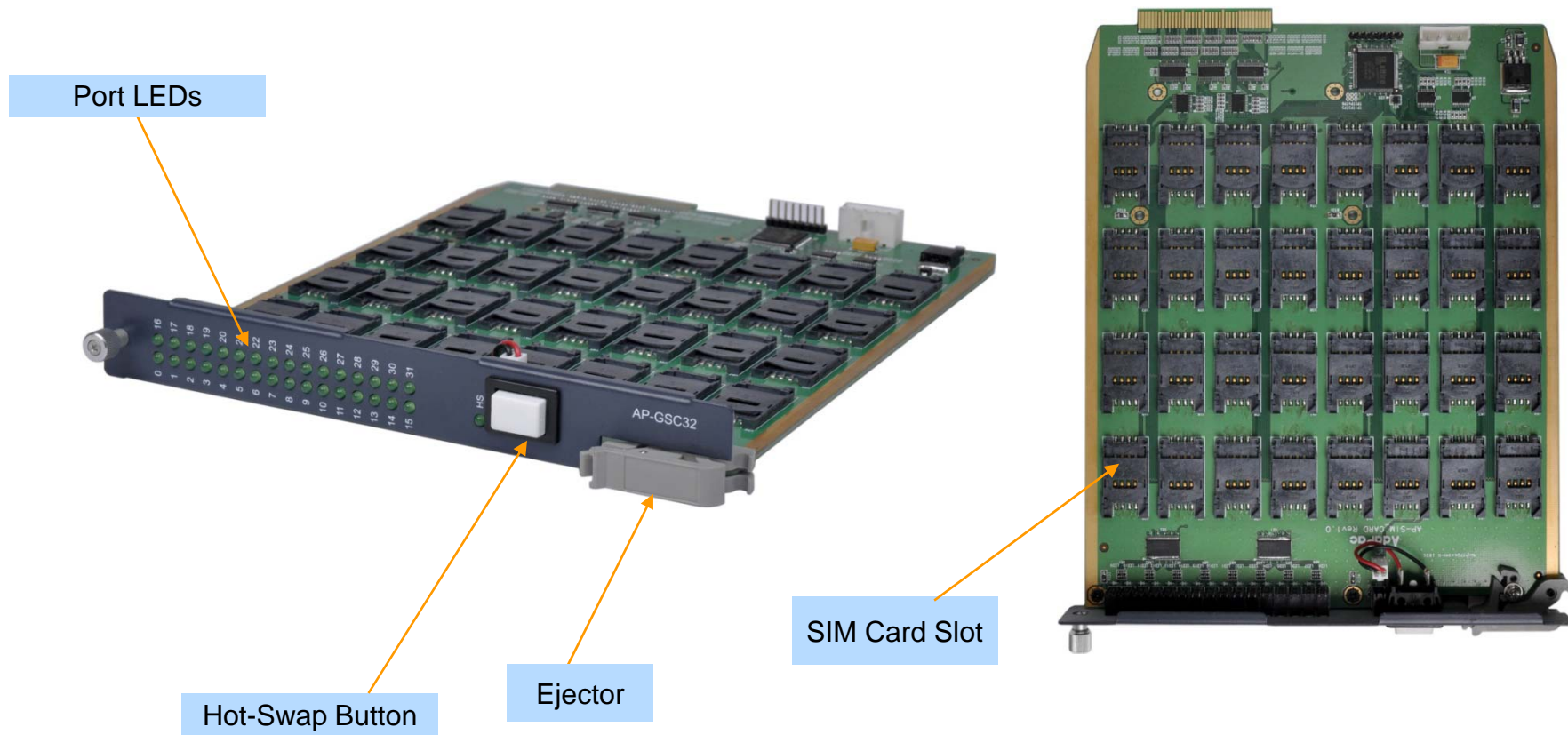
SIM Bank Module(AP-GSC64)



Hardware Specification

AP-GSS3000 1024ch GSM SIM Server

SIM Bank Module(AP-GSC32)

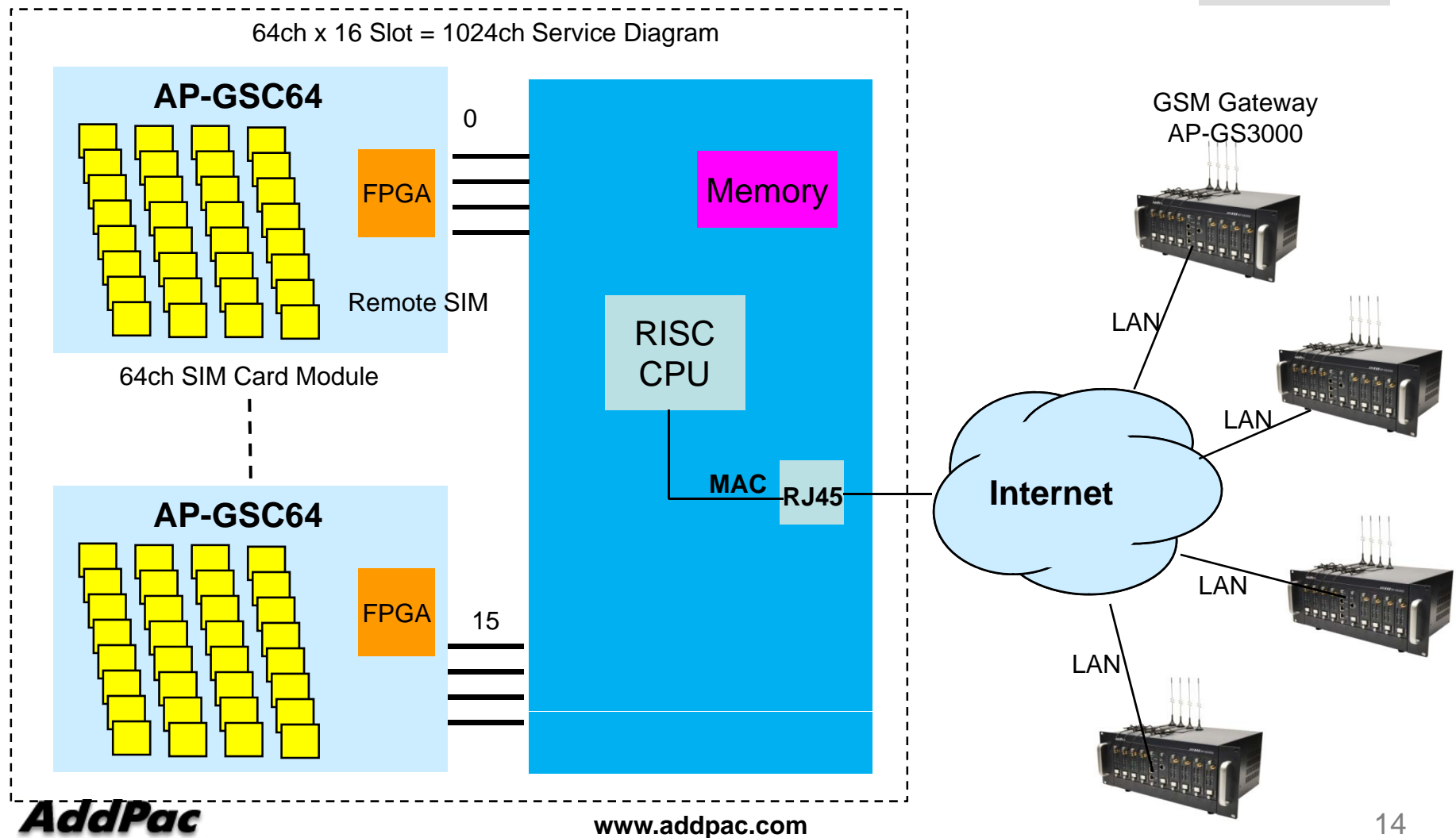


Hardware Specification

AP-GSS3000 1024ch GSM SIM Server

RISC
CPU

GSM SIM Server Service Diagram



Network Protocols

AP-GSS3000 1024ch GSM SIM Server

Basic Network Protocols

- ARP, IPv4, TCP, UDP, ICMP, SCTP, IGMP, MLD

Routing Protocol

- IPv4 : Static

Service Protocol

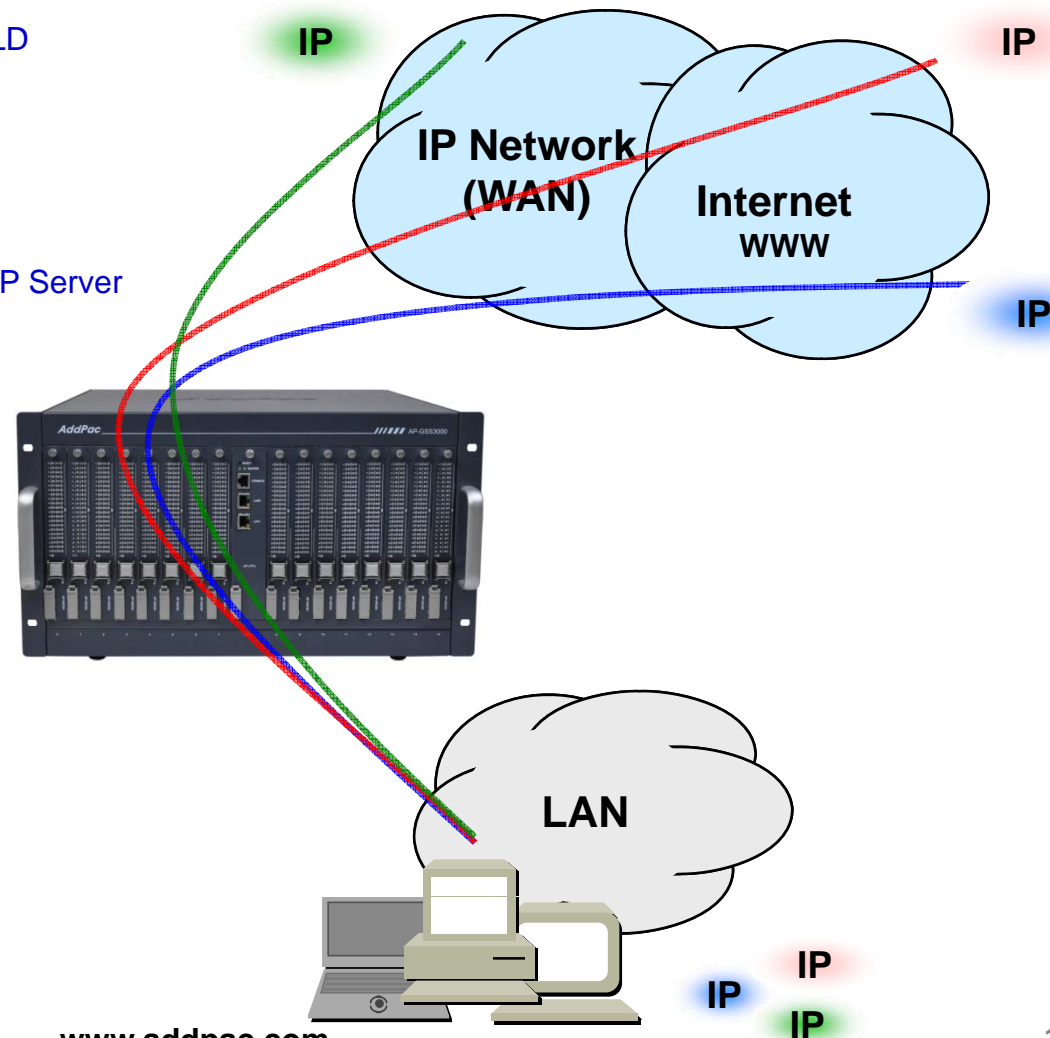
- FTP, Telnet, TFTP, DHCP Server/Relay, SNMP Server
- CDP (Cisco Discovery Protocol)
- DNS Resolver , DDNS(nsupdate)
- Bridge
- Syslog

IPv4 Address Configuration

- Fixed (Static)
- DHCP
- PPPoE

Miscellaneous

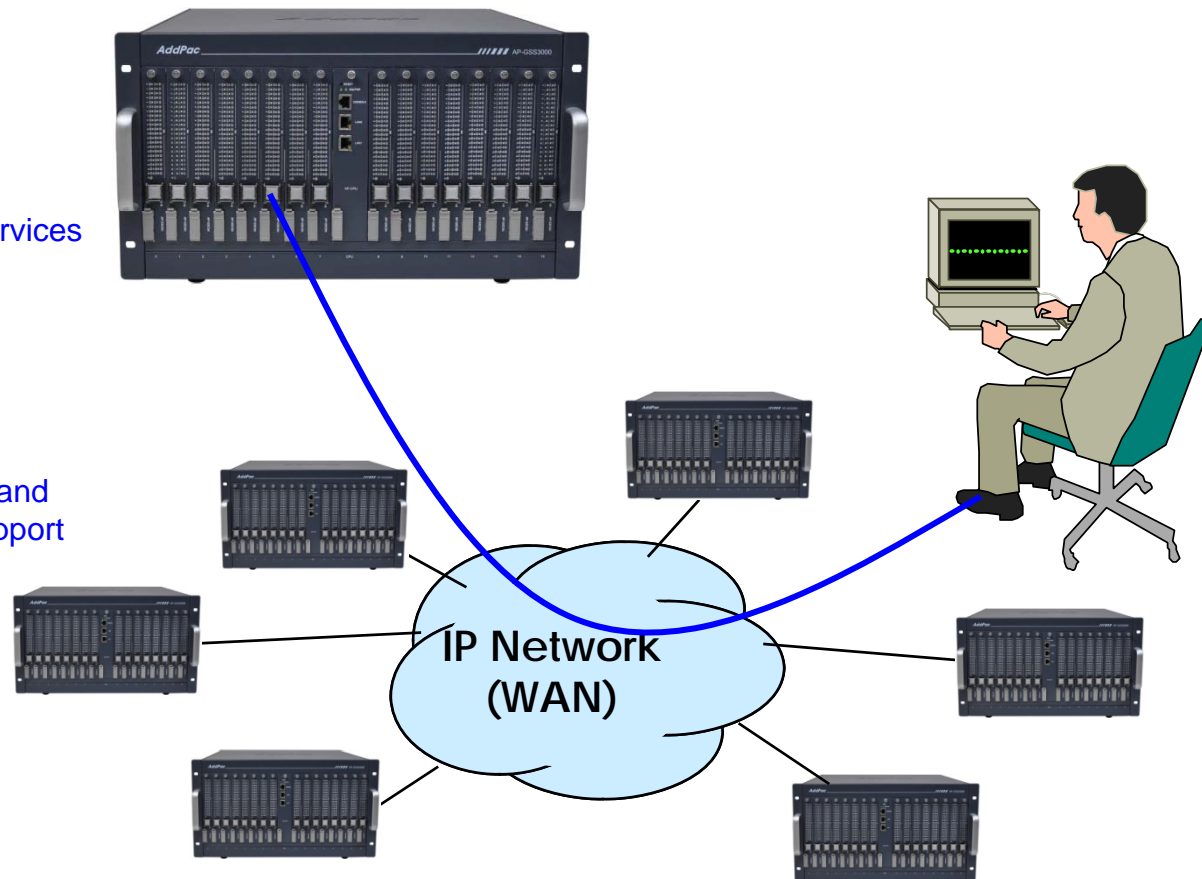
- Cisco Style CLI
- Standard & Extended IPv4 Access List
- Multi-level User Account Management
- IP accounting
- STUN Client



Network Management

AP-GSS3000 1024ch GSM SIM Server

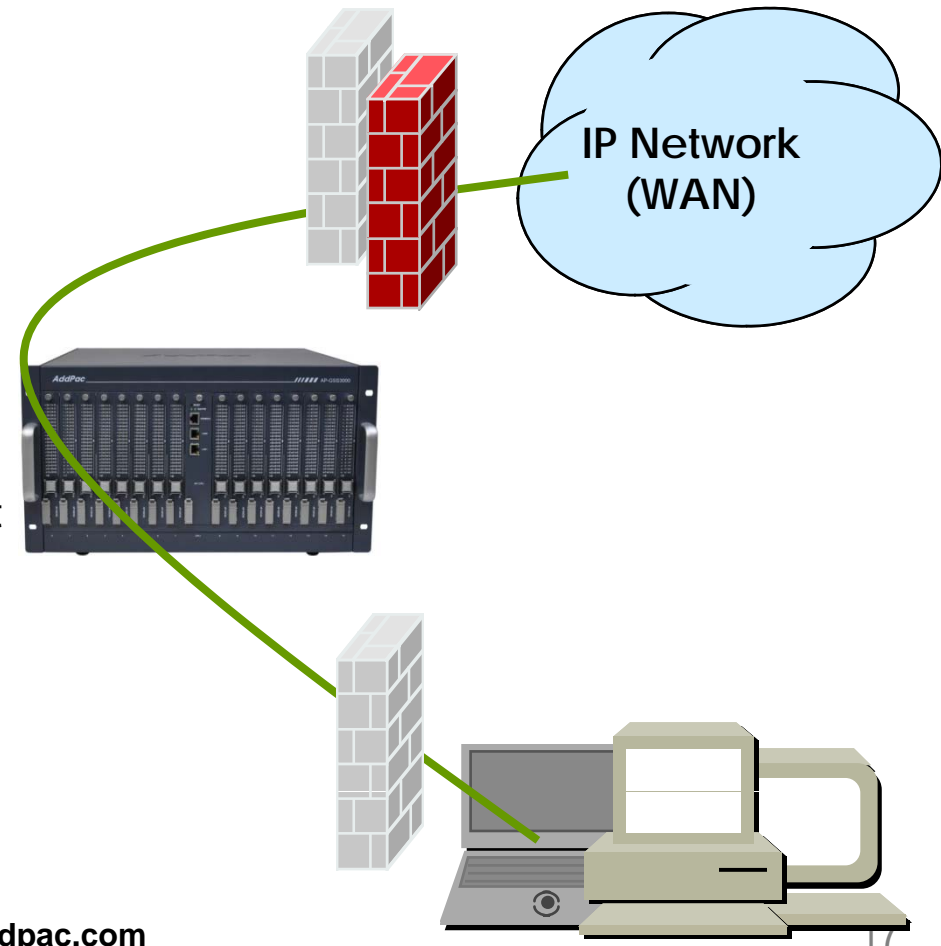
- SNMP
 - Standard Simple Network Management Protocol(SNMP) Agent support
 - MIB v1 and v2 Support
- Web-based Management
 - Smart Web Manager
- Watch-dog Function
 - Hardware, Software watch-dog services
- Remote Management
 - Telnet
 - Rlogin
- Auto Upgrade Service
 - HTTP server based APOS image and configuration file auto-upgrade support
- Batch Job Function
 - Text based script downloading
- Interoperable with Smart NMS Service
 - AddPac Smart Network Management System



Security Management

AP-GSS3000 1024ch GSM SIM Server

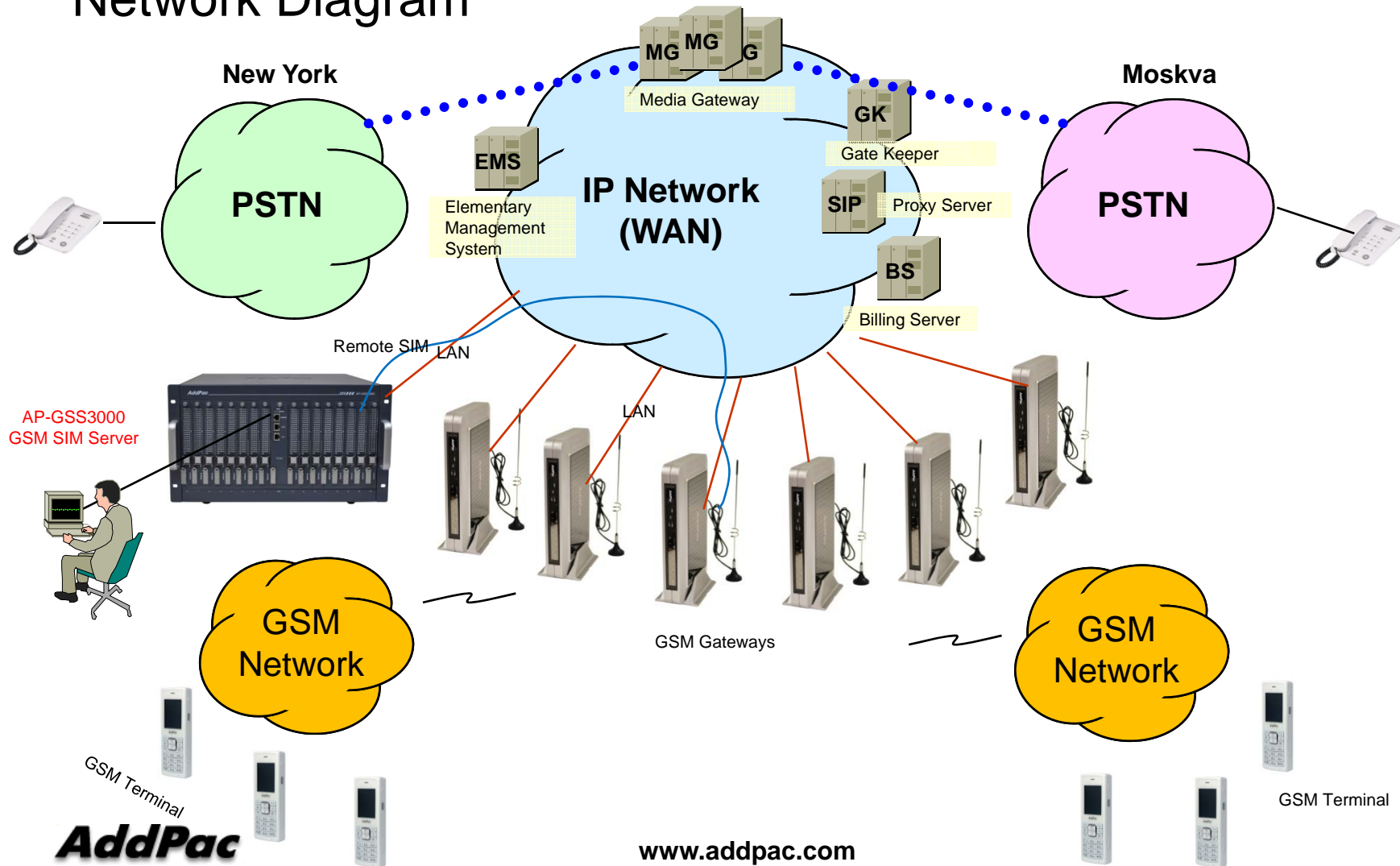
- IP packet filtering
- IP access list
- User authentication function
 - Password Authentication Protocol (PAP)
 - Challenge Handshake Authentication Protocol (CHAP)
- Enable/Disable specific protocols
- Auto-square connect of Telnet session
- Account Management function for multi-level user
- SNMP/TELNET/FTP/HTTP/TFTP port assignment function
- SNMP/TELNET/FTP access list management
- Boot mode security checking function



Standard Application

AP-GSS3000 1024ch GSM SIM Server

Network Diagram



Ordering Information

- AP-GSS3000 1024ch GSM SIM Server Hardware
 - AP-GSS3000 GSM Gateway Main Body
 - Sixteen(16) Module Slots excluding CPU Module
 - High-end Programmable RISC Microprocessor
 - 2-port 10/100/1000Mbps Gigabit Ethernet(RJ45)
 - 1-Port RS232C Console Interface(RJ45)
 - Option Module : AP-GSC64, AP-GSC32 GSM SIM Bank Module
 - Including Network Cable, Antenna, etc.
- Built-in APOS Internetworking Software for AP-GSS3000
- Including 1 Year Hardware Warranty
- Product Documents
 - Install and Operation Guide (PDF)
- Pricing
 - AddPac Technology Regional Sales Manager
 - Authorized Sales and Marketing Representatives
 - Please Contact www.addpac.com

GSM SIM Server Series

Thank you!

AddPac Technology Co., Ltd.
Sales and Marketing

Phone +82.2.568.3848 (KOREA)

FAX +82.2.568.3847 (KOREA)

E-mail sales@addpac.com