

IP Video Conference Solution



AddPac

AddPac Technology

Sales and Marketing

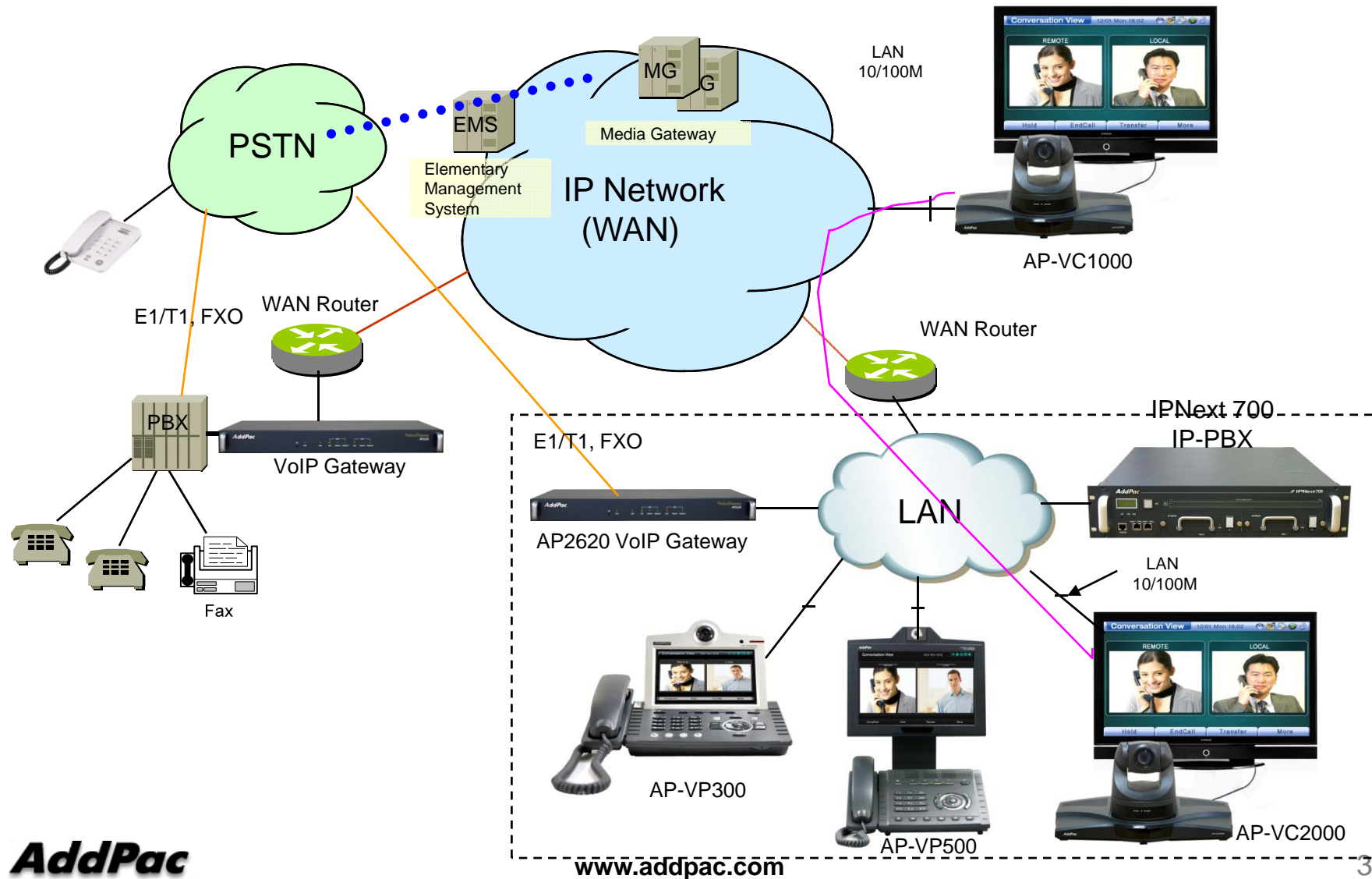
www.addpac.com

Contents

- IP Video Conference Service Diagram
- IP Video Conference Equipment Comparison Table
- IP Video Conference Equipment Series
 - AP-VC2000 (2 Channel, 4-Party MCU)
 - AP-VC1000 (1 Channel)
 - AP-VC200



IP Video Conference Service Diagram



IP Video Conference Equipment Comparison Table

Model	AP-VC2000	AP-VC1000	AP-VC200
Specification			
Audio/Video Port	Two(2) Channel	One(1) Channel	One(1) Channel
Camera	External	External	Internal CCD
Video Codec	H.263 MPEG4 H.264	H.263 MPEG4 H.264	H.263 MPEG4 H.264
Video Resolution	SD	SD	SD
Signaling	H.323/SIP	H.323/SIP	H.323/SIP
Video MCU	4-Party Video MCU	N/A	N/A
PSTN Interface	1-Port FXS	1-Port FXS	1-Port FXS, 1-Port FXO
LAN Port	2	2	2
Console Port	1	1	1
Power	External Power Adaptor	External Power Adaptor	External Power Adaptor



AP-VC2000

Video Conference Equipment

Video Conference

AP-VC2000 IP Video Conference Equipment

Main Features

- Two(2) Channel SD Level Video Conference Equipment
- One(1) is for Camera, the other is for Document PC
- HD (720P) Display Support for HDTV
- Internal 4-Party MCU support
- H.323/SIP Concurrent Stack Embedded
- High Performance RISC & Programmable DSP Architecture
- Two(2) 10/100Mbps Fast Ethernet (IP Share ,etc)
- High-performance Video Codec Support
 - H.263, MPEG-4, and H.264
- G.711/G.726/G.723/G.729, etc
- Powerful Network Protocols (PPPoE, DHCP, Static Routing, etc)
- Firmware Upgradeable Architecture
- VPMS (VoIP Plug&Play Management System) for Large Scale Deployment
- Advanced Voice QoS Mechanism

Video Conference

AP-VC2000 IP Video Conference Equipment

RISC
CPU

High-end
DSP

Hardware Specification

- RISC Microprocessor Computing Power
- High-end Programmable DSP Hardware Architecture
- External Powerful Audio/Video Interface (CH#1)
 - Composite RCA Out, S-Video Out, Component Out
 - Composite RCA Input, S-Video Input
 - Camera PAN/TILT/ZOOM via RJ45 RS-232C Interface
 - Stereo Audio Input Connector (3.5mm)
 - Stereo RCA Type Audio Output Connector (Left, Right)
- External Powerful Audio/Video Interface (CH#2)
 - Composite RCA Out, S-Video Out, Component Out, **D-sub 15pin VGA Out**
 - Composite RCA Input, S-Video Input, **D-sub 15pin VGA Input**
 - Camera PAN/TILT/ZOOM via DB-9 RS-232C/RS422 Interface
 - Stereo Audio Input Connector (3.5mm)
 - Stereo RCA Type Audio Output Connector (Left, Right)
- Internal MIC/Speaker
- Network Interface
 - Two(2) 10/100Mbps Fast Ethernet (RJ45)
 - One(1) RS-232C Interface (RJ45) for Console
- USB Interface
 - USB 1.1 Master Interface for USB Wifi, HDD, Flash Memory,
- VoIP Gateway
 - 1-Port FXS VoIP Interface for Analog Phone, Wireless Phone

Video Conference

AP-VC2000 IP Video Conference Equipment

RISC
CPU

High-end
DSP

Hardware Specification



Video Conference

AP-VC2000 IP Video Conference Equipment

RISC
CPU

High-end
DSP

Hardware Specification



1.3.5mm Audio Input (CH1)

2.RCA Video Input (CH1)

3.S-Video Input (CH1)

4.RCA Audio Output L (CH1)

5.RCA Audio Output R (CH1)

6.D-sub Video Output (CH1)

7.RCA Video Output (CH1)

8.S-Video Output (CH1)

9.Component Y OUT (CH1)

10.Component Pb OUT (CH1)

11.Component Pr OUT (CH1)

12.Power ON/OFF Switch

13.External Power Input (DC5V)

14.USB Interface (Host Mode)

15.10/100Mbps Ethernet 0

16.10/100Mbps Ethernet 1

17.3.5mm Audio Input (CH0)

18..RCA Video Input (CH0)

19.S-Video Input (CH0)

20.RCA Audio Output L (CH0)

21.RCA Audio Output R (CH0)

22.D-sub Video Input (CH1)

23.RCA Video Output (CH0)

24.S-Video Output (CH0)

25.Component Y OUT (CH0)

26.Component Pb OUT (CH0)

27.Component Pr OUT (CH0)

28.FXS Voice Port

29.Console 1 (RJ-45) for PTZ

30.Console 2 (D-sub) for PTZ

31.Console for CLI

AddPac

www.addpac.com

9



AP-VC1000

Video Conference Equipment

Video Conference

AP-VC1000 IP Video Conference Equipment

Main Features

- One(1) Channel SD Level Video Conference Equipment
- HD (720P) Display Support for HDTV
- H.323/SIP Concurrent Stack Embedded
- Dual Monitor Emulation
- Document Sharing with PC Software
- High Performance RISC & Programmable DSP Architecture
- Two(2) 10/100Mbps Fast Ethernet (IP Share ,etc)
- High-performance Video Codec Support
 - H.263, MPEG-4, and H.264
- G.711/G.726/G.723/G.729, etc
- Powerful Network Protocols (PPPoE, DHCP, Static Routing, etc)
- Firmware Upgradeable Architecture
- VPMS (VoIP Plug&Play Management System) for Large Scale Deployment
- Advanced Voice QoS Mechanism

Video Conference

AP-VC1000 IP Video Conference Equipment

RISC
CPU

High-end
DSP

Hardware Specification

- RISC Microprocessor Computing Power
- High-end Programmable DSP Hardware Architecture
- External Powerful Audio/Video Interface
 - Composite RCA Out, S-Video Out, Component Out, RGB Out
 - Composite RCA Input, S-Video Input
 - Camera PAN/TILT/ZOOM via DB-9 RS-232C Interface
 - Stereo Audio Input Connector (3.5mm)
 - Stereo RCA Type Audio Output Connector (Left, Right)
- Internal MIC/Speaker
- Network Interface
 - Two(2) 10/100Mbps Fast Ethernet (RJ45)
 - One(1) RS-232C Interface (RJ45) for Console
- USB Interface
 - USB 1.1 Master Interface for USB Wifi, HDD, Flash Memory,
- VoIP Gateway
 - 1-Port FXS VoIP Interface for Analog Phone, Wireless Phone

Video Conference

AP-VC1000 IP Video Conference Equipment

RISC
CPU

High-end
DSP

Hardware Specification




- 1. Power ON/OFF Switch
- 2. External Power Input (DC5V)
- 3. USB Interface (Host Mode)
- 4. 10/100Mbps Ethernet 0
- 5. 10/100Mbps Ethernet 1

- 6. 3.5mm Audio Input
- 7. RCA Video Input
- 8. S-Video Input
- 9. RCA Audio Output L
- 10. RCA Audio Output R

- 11. RGB Video Output
- 12. RCA Video Output
- 13. S-Video Output
- 14. Component Y OUT
- 15. Component Pb OUT

- 16. Component Pr OUT
- 17. FXS Voice Port
- 18. RS-232C 1 (RJ-45)
- 19. RS-232C 2 (D-sub)
- 20. Console(RS-232C)



AP-VC200

Video Conference Equipment

Video Conference

AP-VC200 IP Video Conference Equipment

Main Features

- One(1) Channel SD Level Video Conference Equipment
- HD (720P) Display Support for HDTV
- H.323/SIP Concurrent Stack Embedded
- Built-in CCD Camera
- High Performance RISC & Programmable DSP Architecture
- Two(2) 10/100Mbps Fast Ethernet (IP Share ,etc)
- High-performance Video Codec Support
 - H.263, MPEG-4, and H.264
- G.711/G.726/G.723/G.729, etc
- Powerful Network Protocols (PPPoE, DHCP, Static Routing, etc)
- Firmware Upgradeable Architecture
- VPMS (VoIP Plug&Play Management System) for Large Scale Deployment
- Advanced Voice QoS Mechanism

Video Conference

AP-VC200 IP Video Conference Equipment

High-end
DSP

Hardware Specification

- RISC Microprocessor Computing Power
- High-end Programmable DSP Hardware Architecture
- Powerful Video Interface
 - RCA Output, S-Video Output, Component Output
- High quality Audio and Voice Interface
 - Stereo Audio Input Connector
 - Stereo Audio Output Connector
- Network Interface
 - Two(2) 10/100Mbps Fast Ethernet (RJ45)
 - One(1) RS-232C Interface (RJ45) for Console
- USB Interface
 - USB 1.1 Master Interface for USB Wifi, HDD, Flash Memory, USB Keyboard, USB Mouse
- VoIP Gateway
 - 1-Port FXS VoIP Interface for Analog Phone, Wireless Phone
 - 1-Port FXO VoIP Interface for PSTN Interface



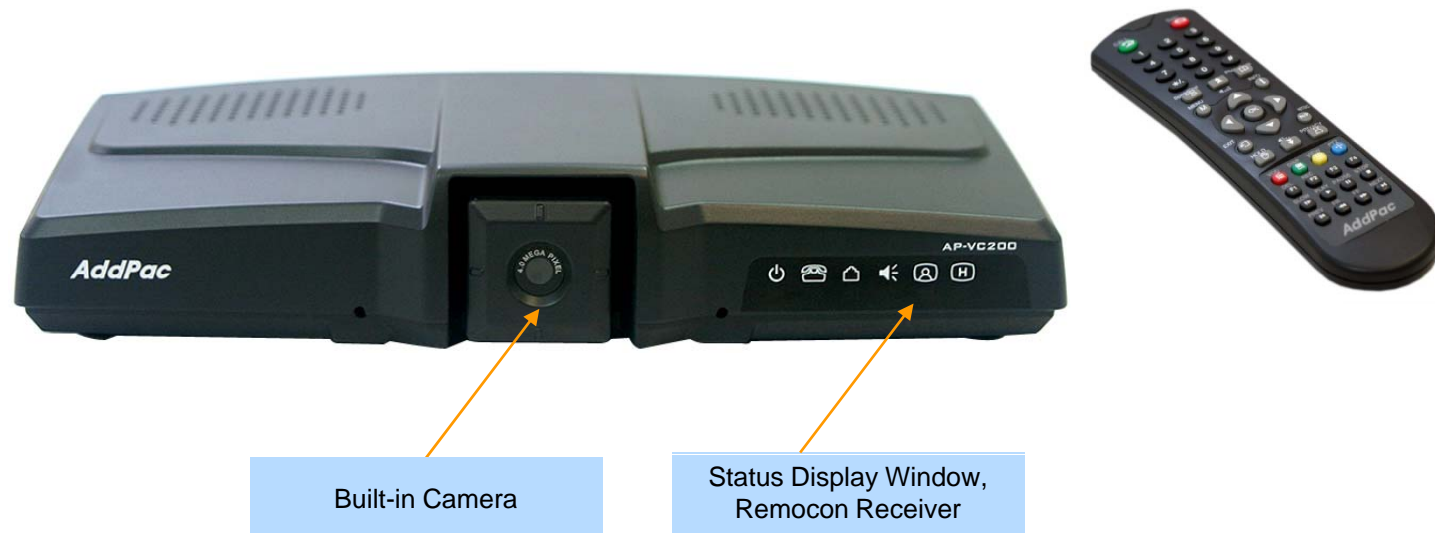
Video Conference

AP-VC200 IP Video Conference Equipment

RISC
CPU

High-end
DSP

Hardware Specification



Video Conference

AP-VC200 IP Video Conference Equipment

RISC
CPU

High-end
DSP

Hardware Specification



- 1. Power ON/OFF Switch
- 2. External Power Input (DC5V)
- 3. RS232-C Console (RJ-45)
- 4. 10/100Mbps Ethernet 0 (LAN)
- 5. 10/100Mbps Ethernet 1(PC)

- 6. USB Interface (Host Mode)
- 7. FXS Voice Port for Analog Phone, FAX
- 8. FXO Voice Port for PSTN
- 9. 3.5mm Audio Input
- 10. 3.5mm Audio Output

- 11. Component Y OUT
- 12. Component Pb OUT
- 13. Component Pr OUT
- 14. S-video Output
- 15. RCA Output



Thank you!

AddPac Technology Co., Ltd.
Sales and Marketing

Phone +82.2.568.3848 (KOREA)

FAX +82.2.568.3847 (KOREA)

E-mail sales@addpac.com