

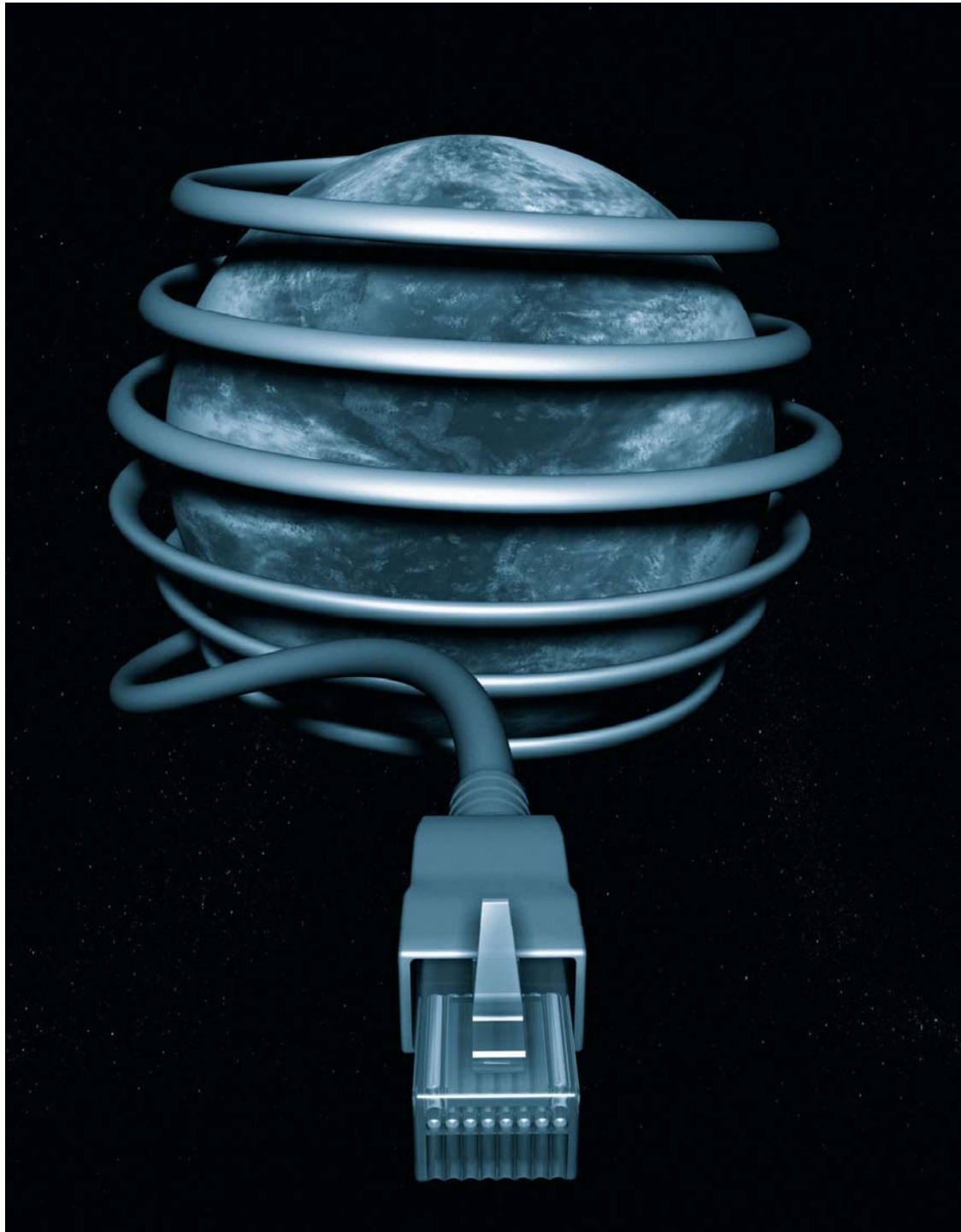
AP190 VoIP Gateway



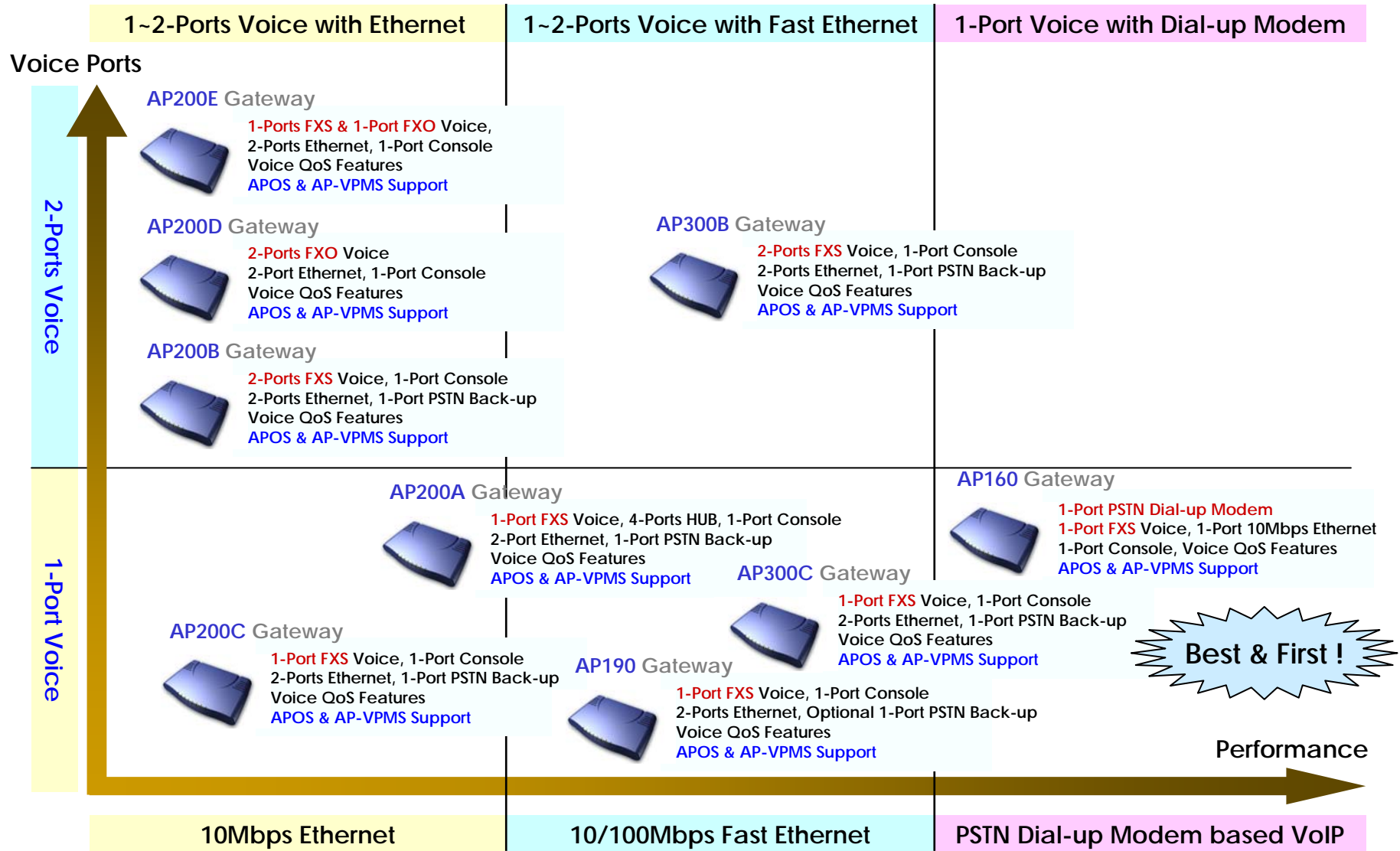
Technical Sales and Marketing

AddPac Technology

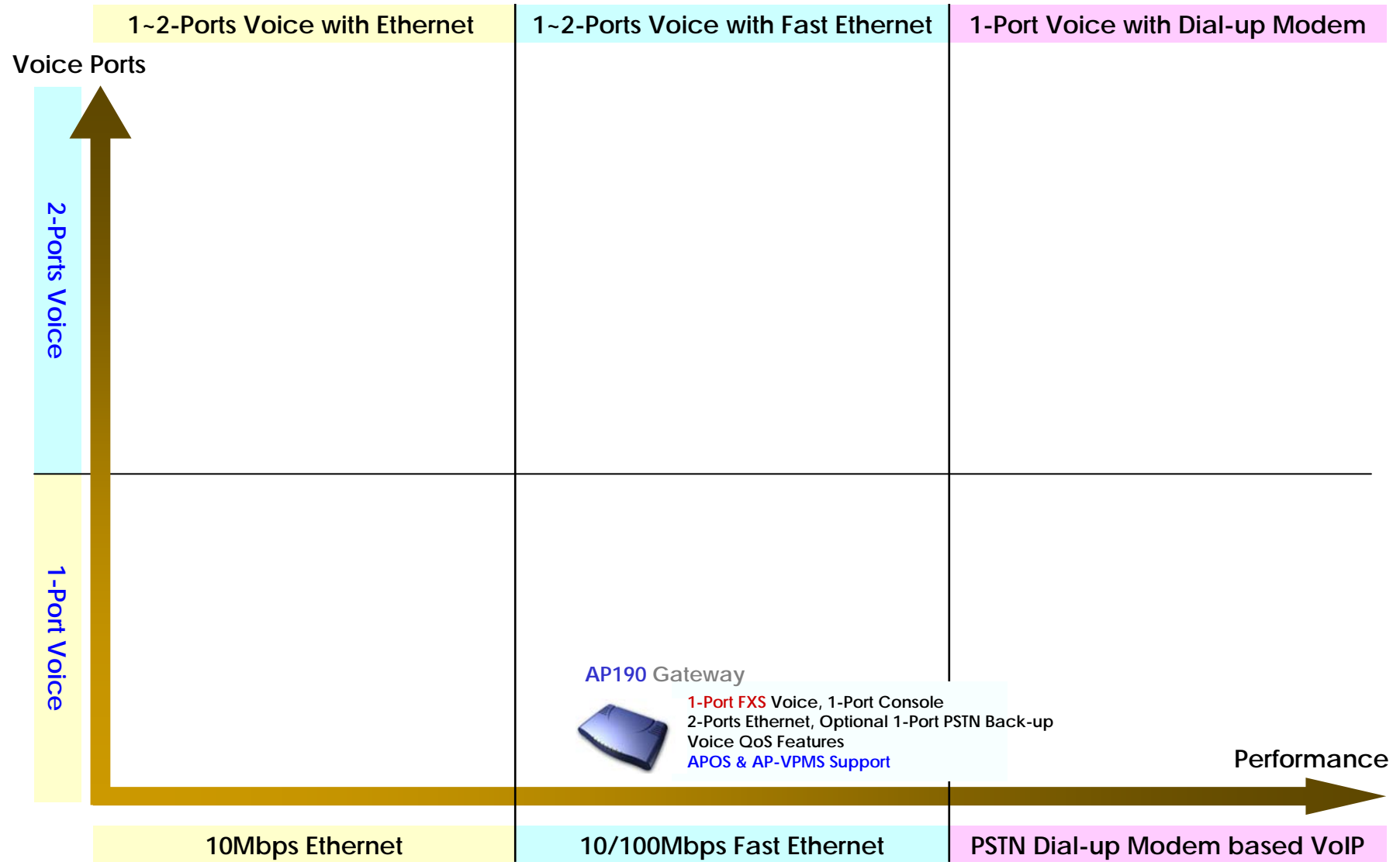
www.addpac.com



AddPac AP160/190/200/300 Products Road-Map

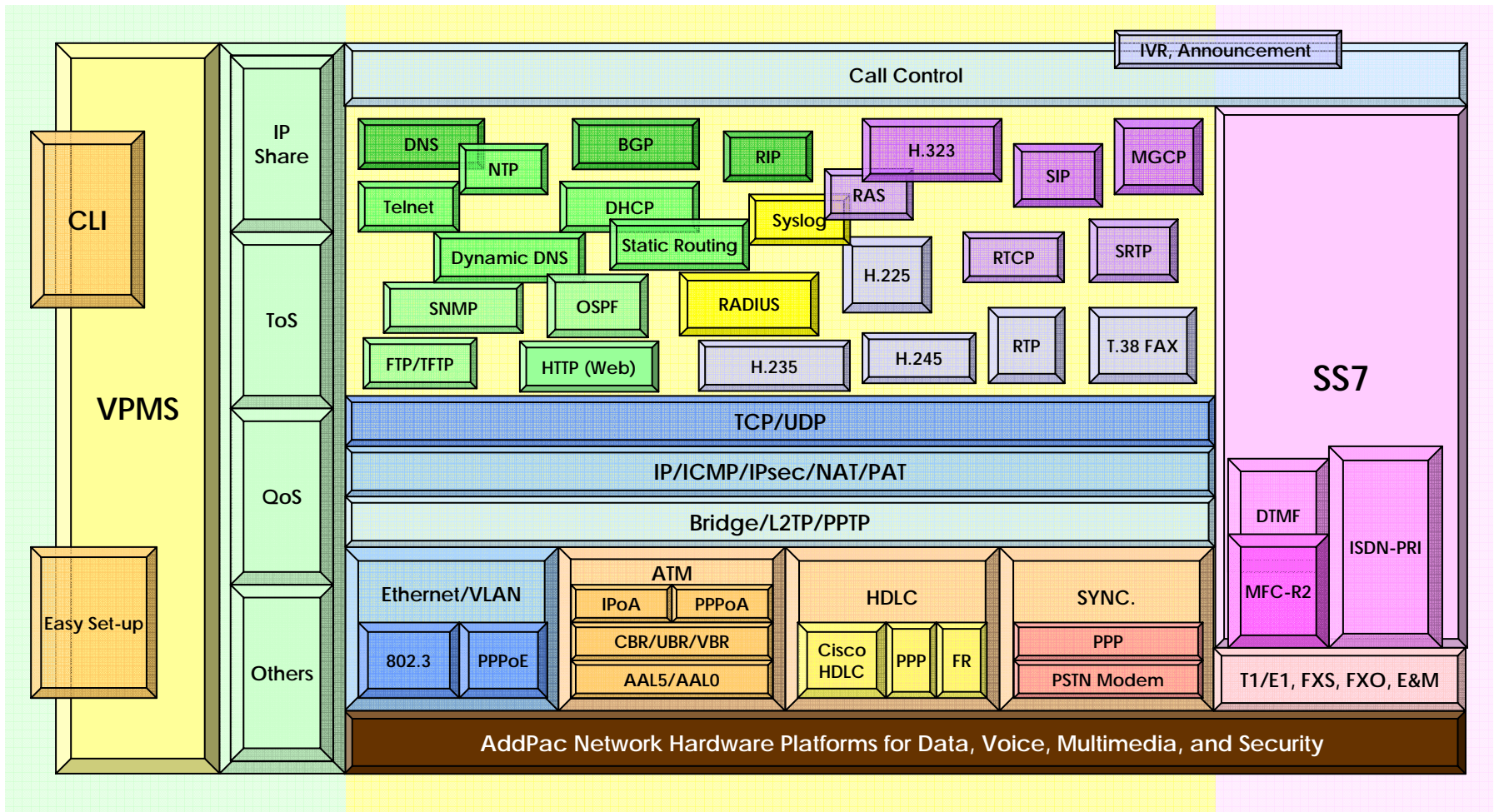


AddPac AP190 Products Road-Map



AP190 VoIP Gateway Product Overview

APOS Internetworking Protocol Stack

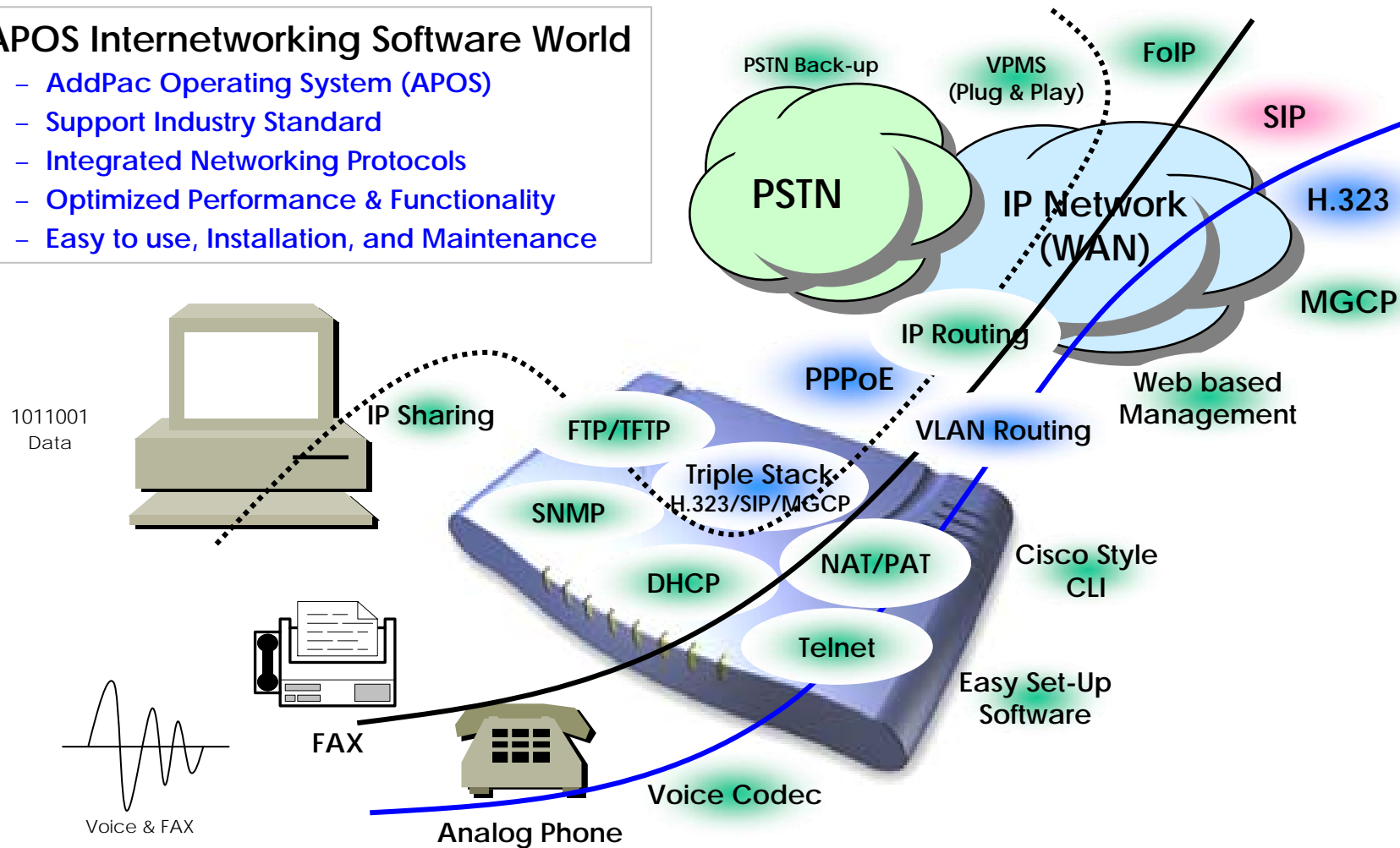


AP190 VoIP Gateway Product Overview

APOS Internetworking S/W World

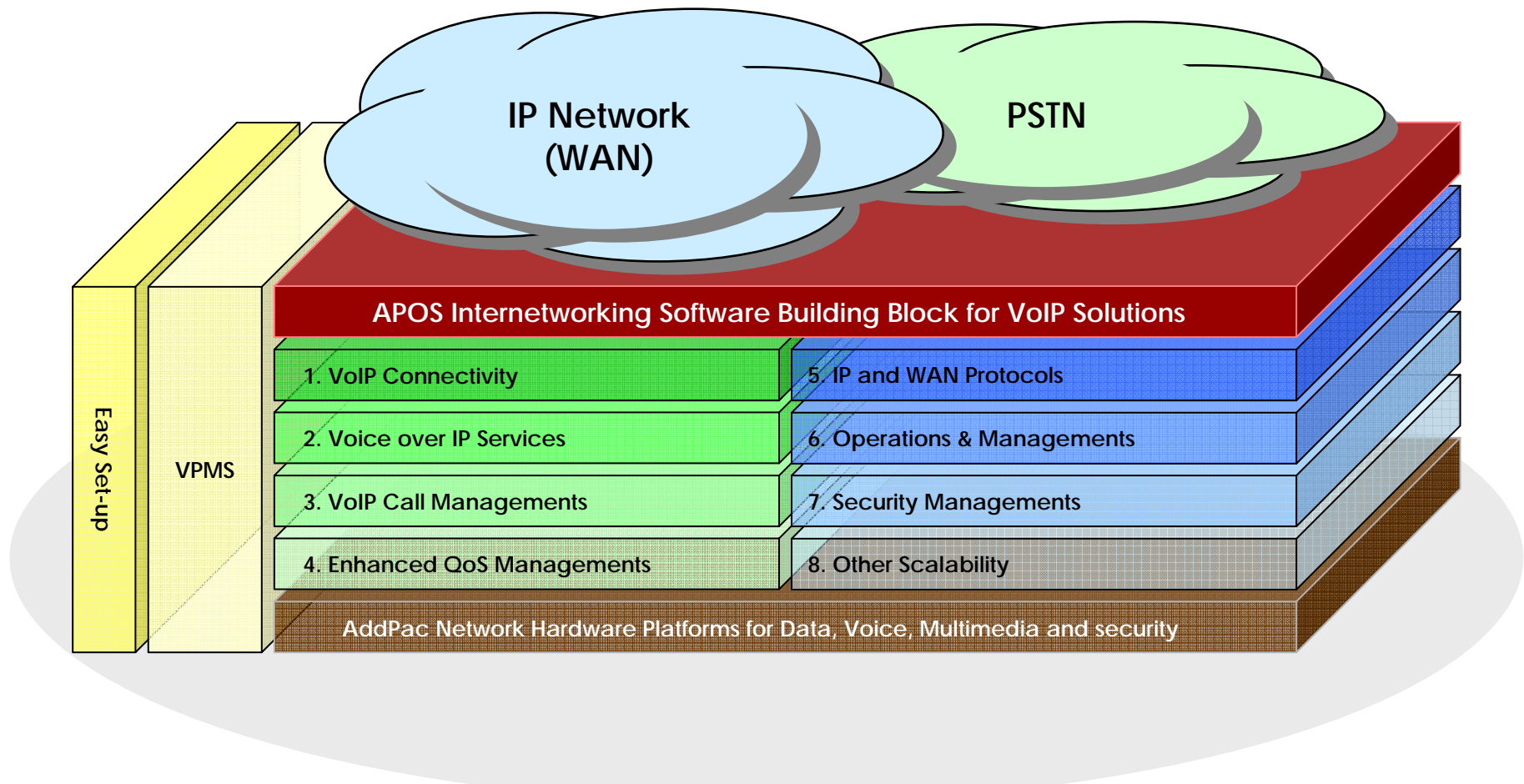
• APOS Internetworking Software World

- AddPac Operating System (APOS)
- Support Industry Standard
- Integrated Networking Protocols
- Optimized Performance & Functionality
- Easy to use, Installation, and Maintenance



AP190 VoIP Gateway Product Overview

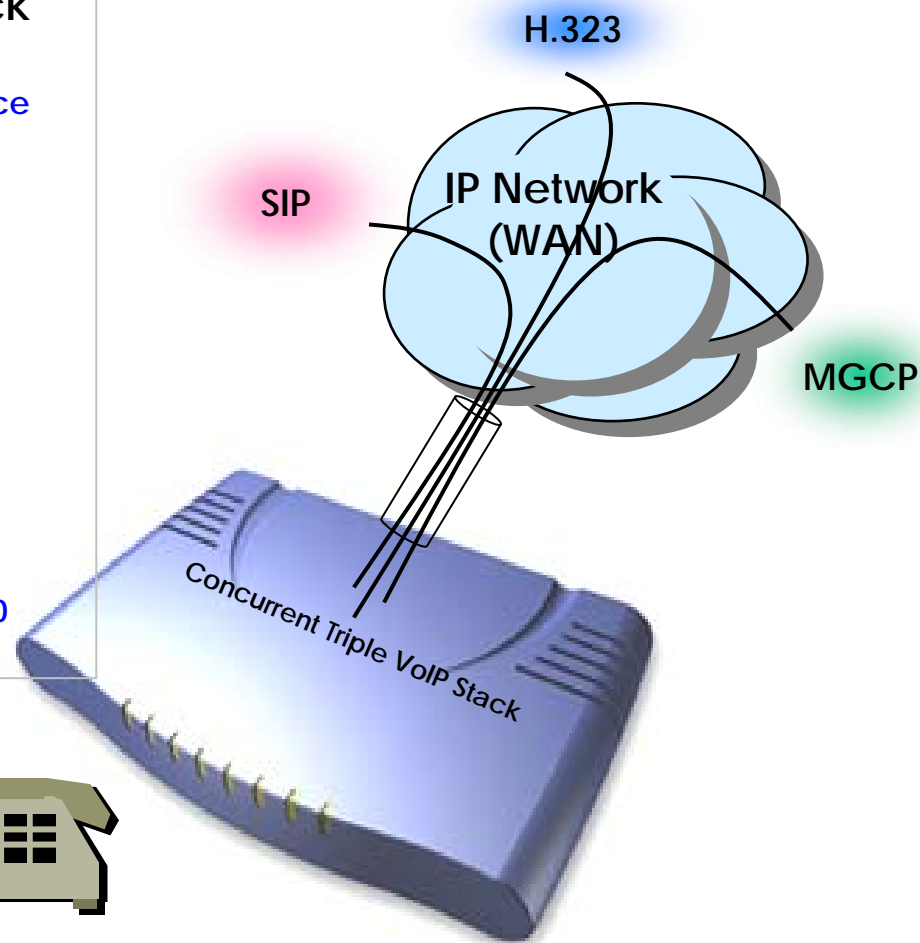
APOS Internetworking S/W World (cont.)



AP190 VoIP Gateway Product Overview

Voice over IP Service

- **H.323, SIP, and MGCP Triple Stack**
 - Concurrent Triple VoIP Stack Software
 - Single Hardware with Three VoIP Service
 - New APOS-NX Version
- **H.323**
 - ITU-T Standard H.323 v3 Support
 - Support H.245 Tunneling
 - Including H.235 Security Features
- **SIP**
 - IETF RFC3261 or RFC2543 SIP Standard
- **MGCP**
 - IETF RFC2705bis-02 Standard MGCP 1.0



AP190 VoIP Gateway Product Overview

Voice over IP Service (cont.)

• H.323

- Fast connect, normal connect support
- H.245 tunneling support
- Q.931 response message setting for inbound VoIP calls
- H.245 logical channel open timing selection function
- Start H.245 procedure support
- DTMF / Hook flash relay with H.245 alphanumeric / signal
- Secondary gatekeeper support
- Gatekeeper assignment according to the domain name
- Gatekeeper discovery with multicast
- Lightweight RRQ support
- Signaling TCP port assignment
- Resource threshold setting with RAI
- H.235 clear-token, crypto-token support
- canMapAlias support
- Technical prefix (supported prefix) support
- Public IP assignment in NAT environment

• SIP

- Gateway-based / Endpoint-based registration support
- Secondary proxy-server assignment function
- SIP signaling port change function
- SIP proxy server assignment according to the domain name
- T.38 real-time fax relay support
- DTMF relay support with RFC2833 / OPTION message
- Re-INVITE support

• MGCP

- Secondary call agent assignment function
- Default package assignment
- Announcement Server Package, Generic Media Package, Handset Package, Line Package, Trunk Package support
- MGCP call agent assignment according to the domain name
- T.38 real-time fax relay support
- DTMF relay support based on RFC2833

AP190 VoIP Gateway Product Overview

Voice over IP Service (cont.)

• Voice Codec

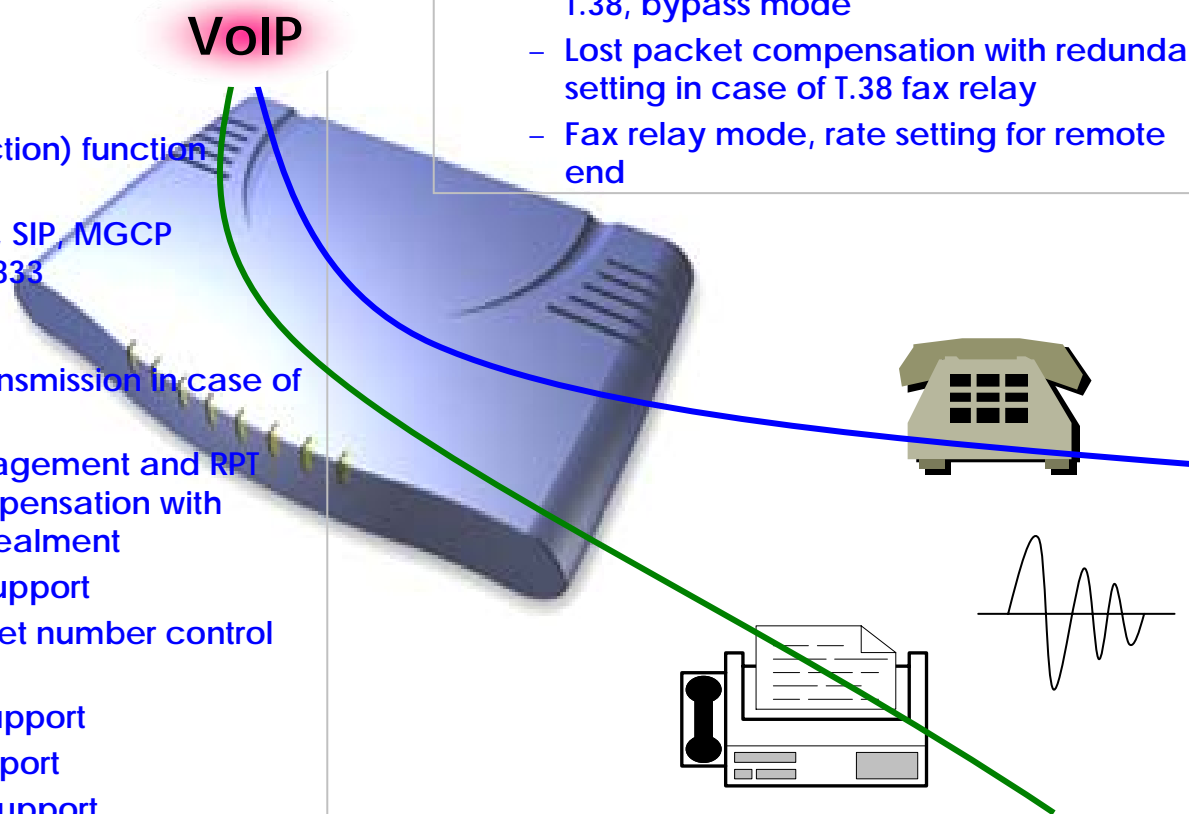
- G.711 A-Law, G.711 U-Law
- G.726 r16, G.726 r32
- G.729A
- G.723.1 r63, G.723.1 r53
- VAD (Voice Activity Detection) function support
- DTMF relay support (H.323, SIP, MGCP common) based on RFC2833

• RTP

- Redundant RTP packet transmission in case of severe packet loss
- Dynamic jitter buffer management and RTP packet jitter and loss compensation with heuristic & DSP error concealment
- Static jitter buffer setting support
- Voice frame per RTP packet number control for each codec
- In-band ring-back tone support
- Virtual ring-back tone support
- Tone parameter change support

• FAX

- Fax relay mode supporting T.38, inband-T.38, bypass mode
- Lost packet compensation with redundant setting in case of T.38 fax relay
- Fax relay mode, rate setting for remote end



AP190 VoIP Gateway Product Overview

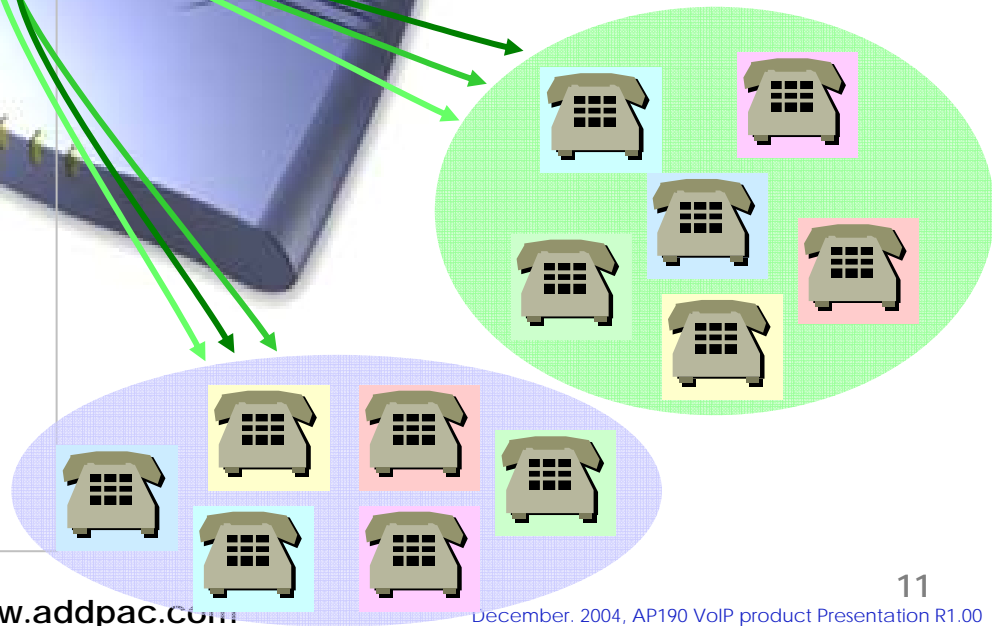
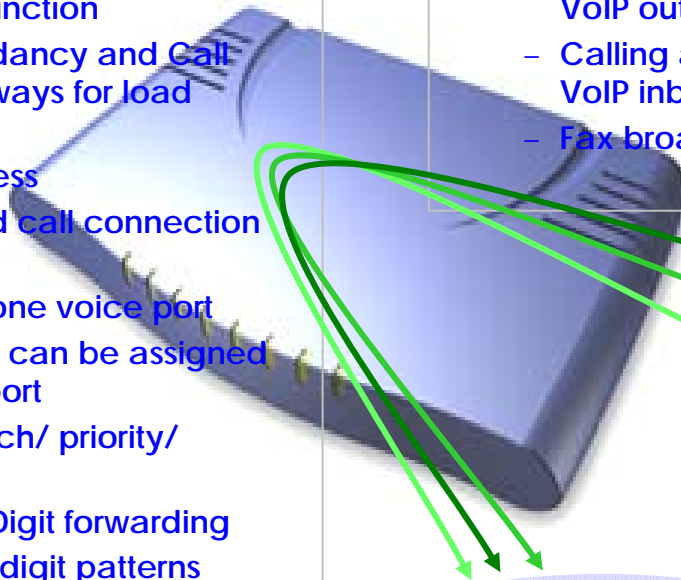
VoIP Call Managements

• VoIP Call Controls

- Hot line connection function with PLAR (Private Line Auto Ring Down)
- Leased line emulation function
- Connection monitoring function
- Fault tolerant with Redundancy and Call Distribution among Gateways for load balancing
- Call attempt with IP address
- H.323, SIP, MGCP inbound call connection for each voice port
- Multiple E.164 setting for one voice port
- One E.164 or digit pattern can be assigned to more than one voice port
- Hunting with Longest match/ priority/ sequence/ random
- One stage call setup by Digit forwarding
- Call barring with specific digit patterns
- Calling and called number conversion for PSTN outbound calls
- PSTN rerouting in case of VoIP call attempt failure

• VoIP Call Controls (cont.)

- Call transfer for internal calls
- Call pickup for internal calls
- Calling and called number conversion for VoIP outbound calls
- Calling and called number conversion for VoIP inbound calls
- Fax broadcasting call control



AP190 VoIP Gateway Product Overview

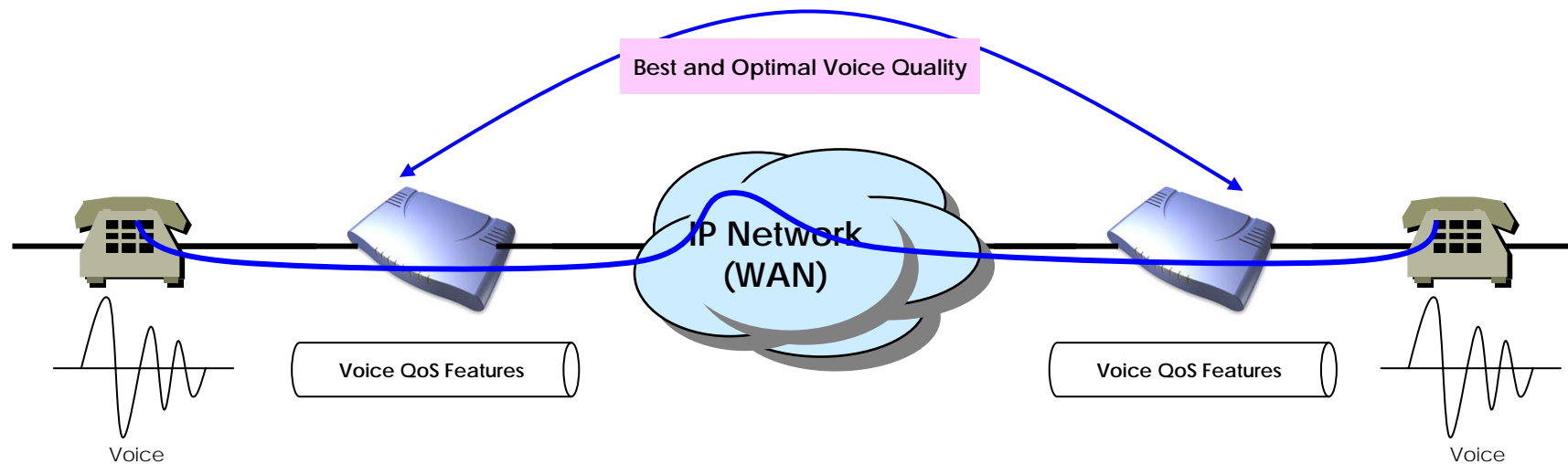
Enhances QoS Managements

- Enhances **Transmit** Voice QoS Features

- Voice Traffic Priority Queuing
- QoS Service Profiling
- Providing Virtual Network Transmit Algorithm
- Real-time Voice Traffic QoS Support
- RTP Packet Transmit Interval Control
- Supporting RTP Packet Redundancy Scheme
- IP Header Control such as ToS, Diffserv

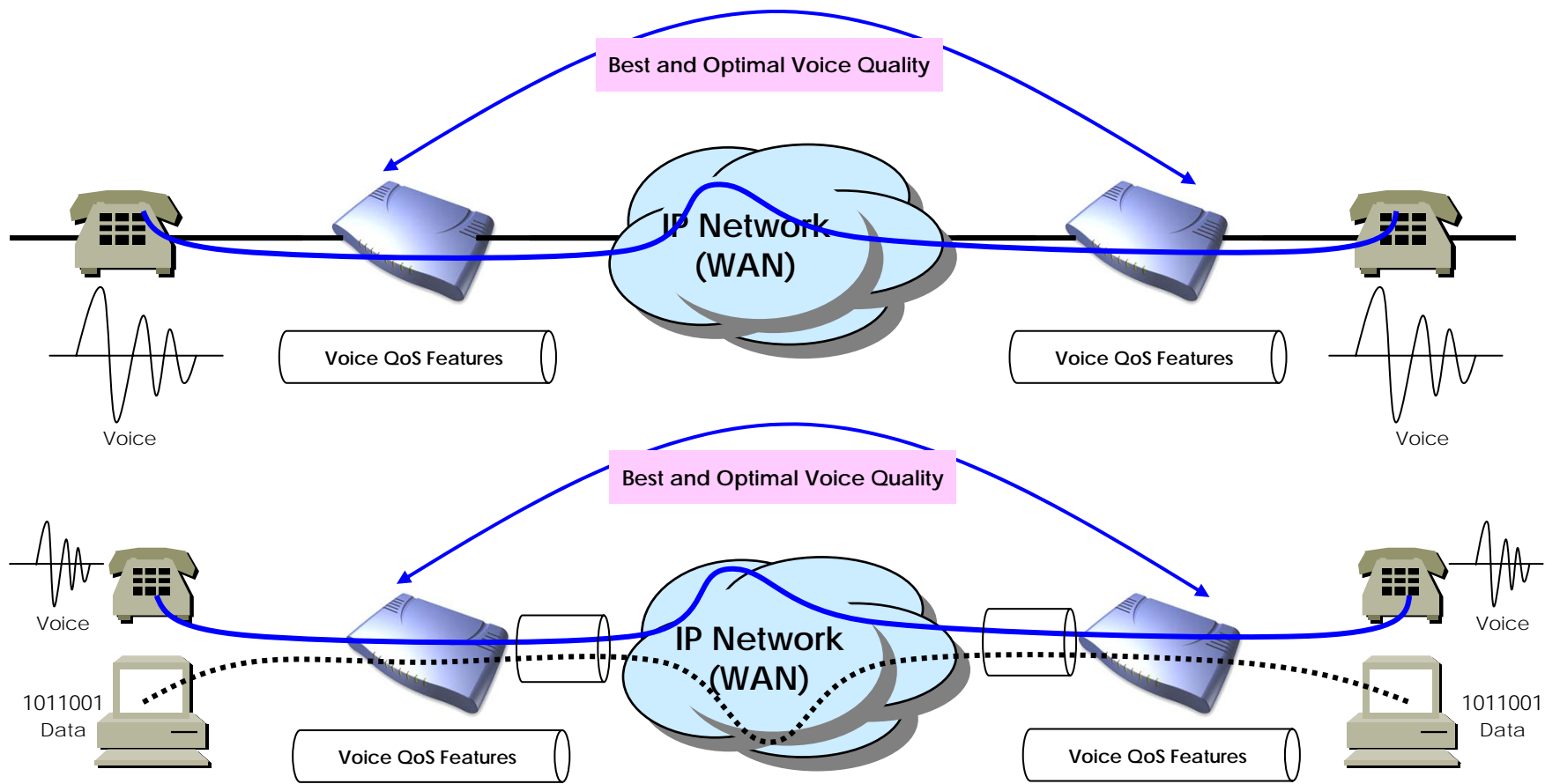
- Enhances **Receive** Voice QoS Features

- Dynamic Jitter Buffer Management
- Error Concealment
- Support T.38 FAX Data Error Recovery Scheme



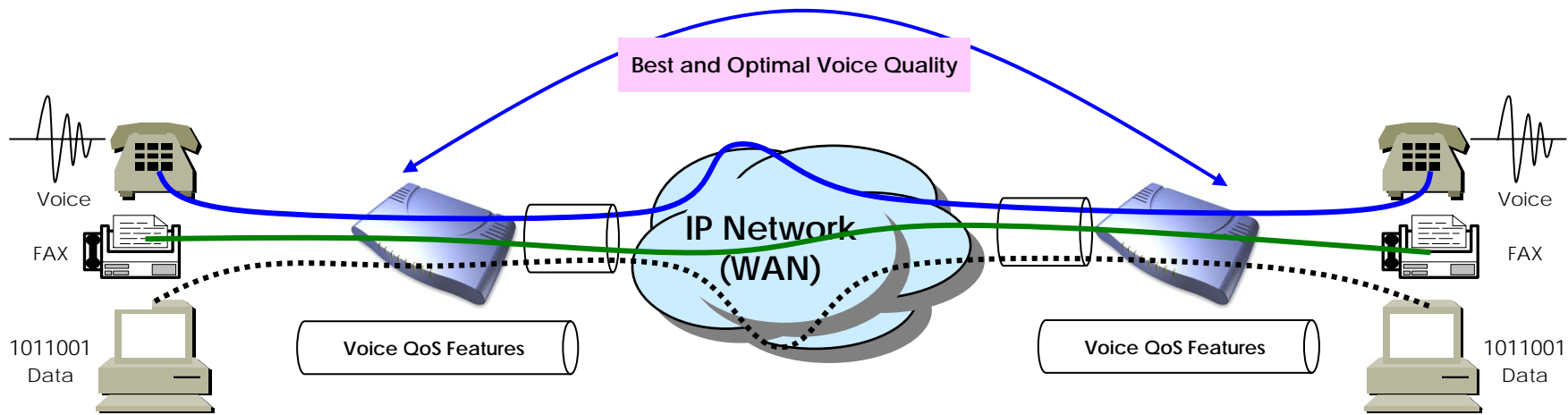
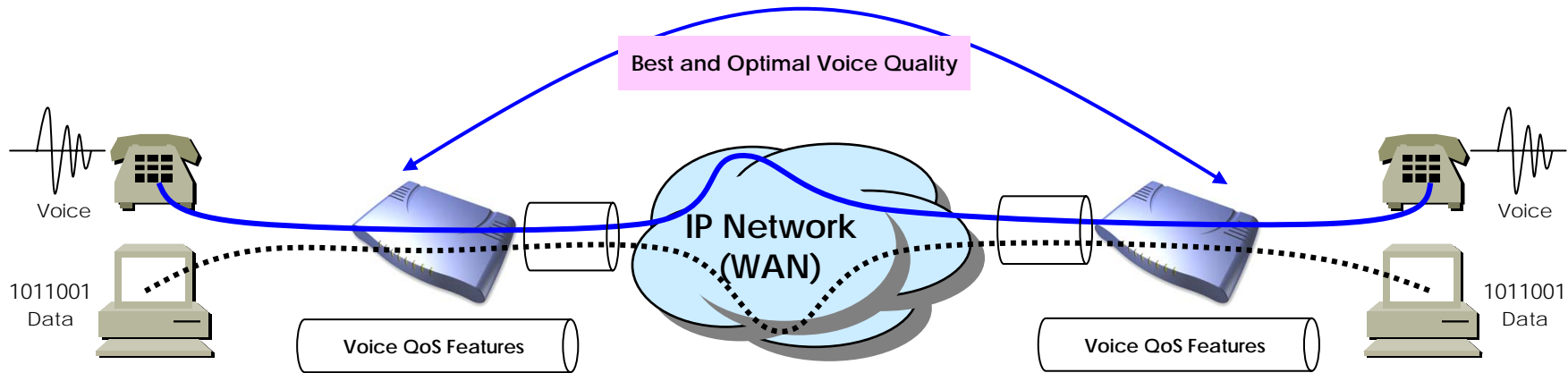
AP190 VoIP Gateway Product Overview

Enhances QoS Managements (cont.)



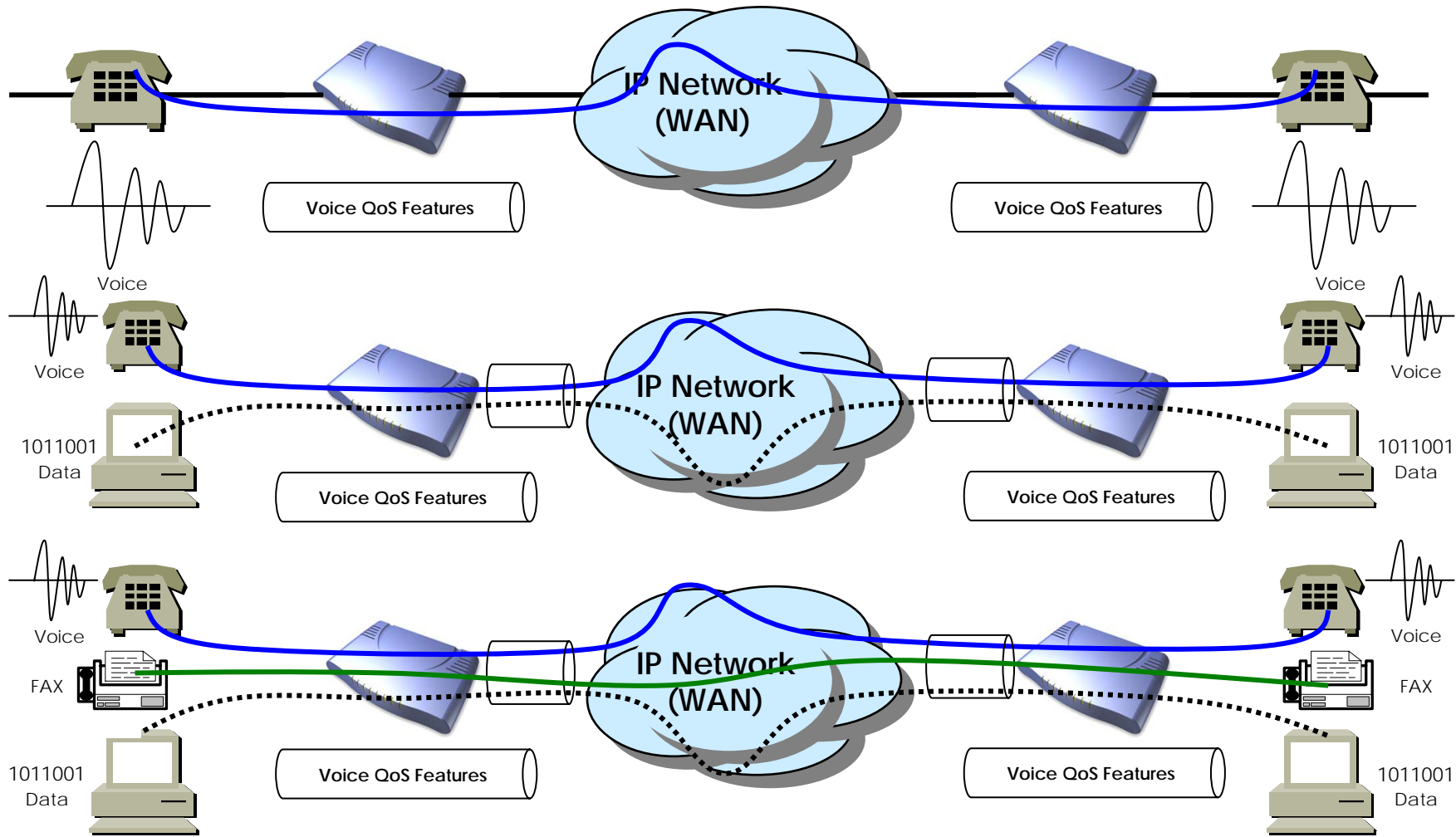
AP190 VoIP Gateway Product Overview

Enhances QoS Managements (cont.)



AP190 VoIP Gateway Product Overview

Enhances QoS Managements (cont.)



AP190 VoIP Gateway Product Overview

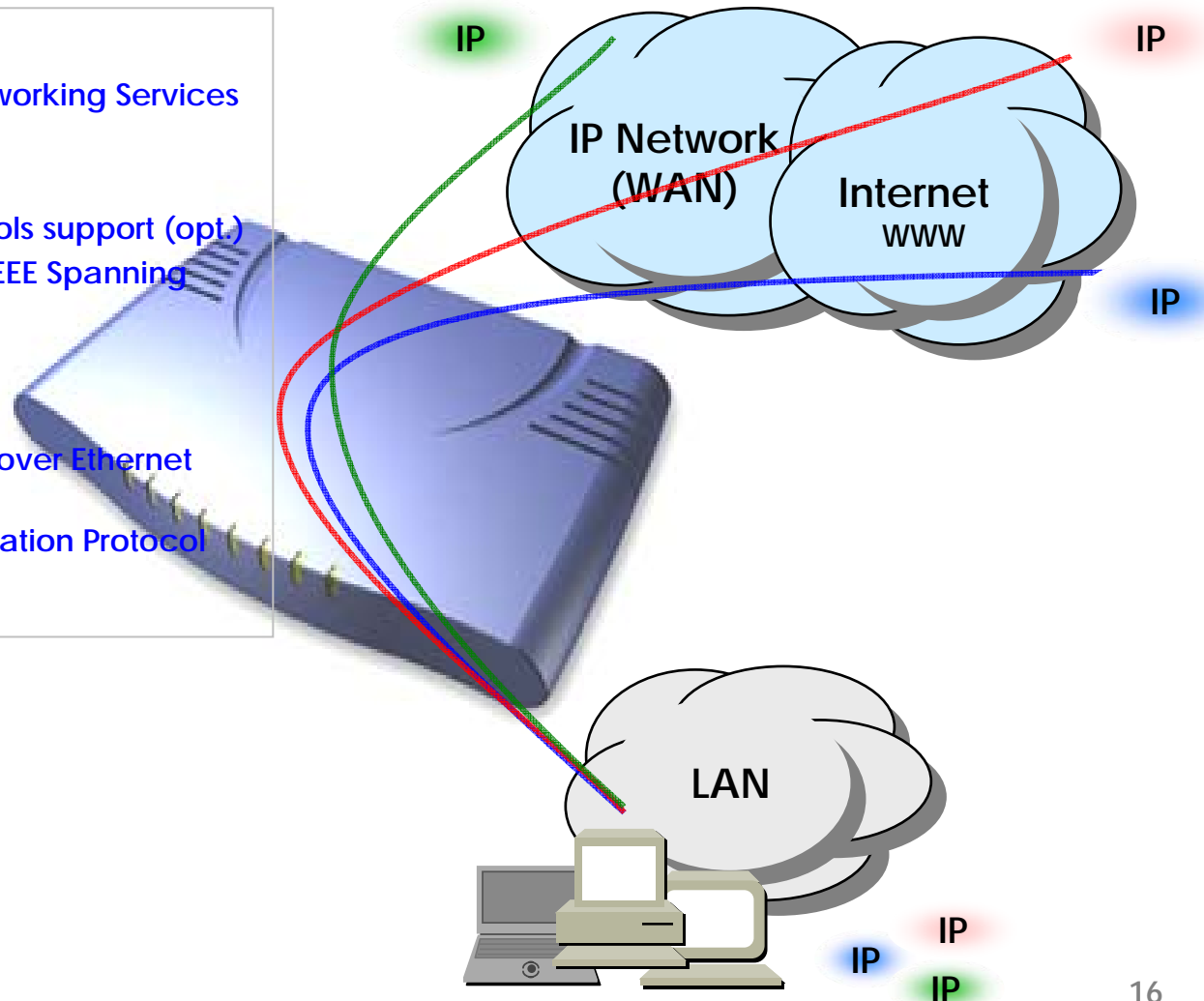
IP and WAN Protocols

- IP Routing Protocols

- Multi-protocol Internetworking Services
- Static IP routing
- RIP v1/v2 (opt.)
- OSPF v2 routing protocols support (opt.)
- Transparent Bridging (IEEE Spanning Tree Protocol)

- WAN Protocols

- Point-to-Point Protocol over Ethernet (PPPoE)
- Dynamic Host Configuration Protocol (DHCP) Networking



AP190 VoIP Gateway Product Overview

Network Managements

- **SNMP**

- Standard Simple Network Management Protocol(SNMP) Agent support
- MIB v1 and v2 Support

- **Web-based Management**

- Standard Voice Interface
- Standard PSTN Back-up Interface(optional)

- **Watch-dog Function**

- Hardware, Software watch-dog services

- **Remote Management**

- Telnet
- Rlogin
- Console

- **Auto Upgrade Service**

- HTTP server based APOS image and configuration file auto-upgrade support

- **Batch Job Function**

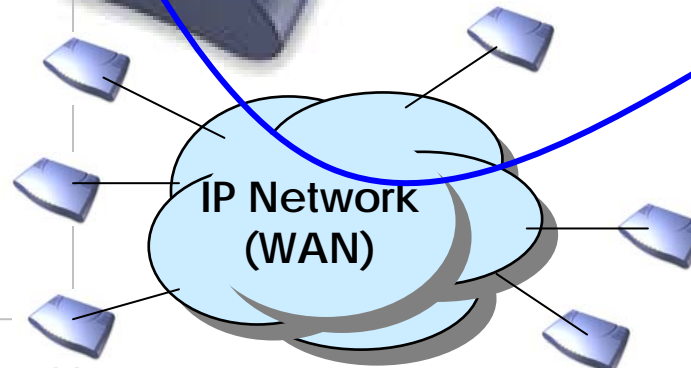
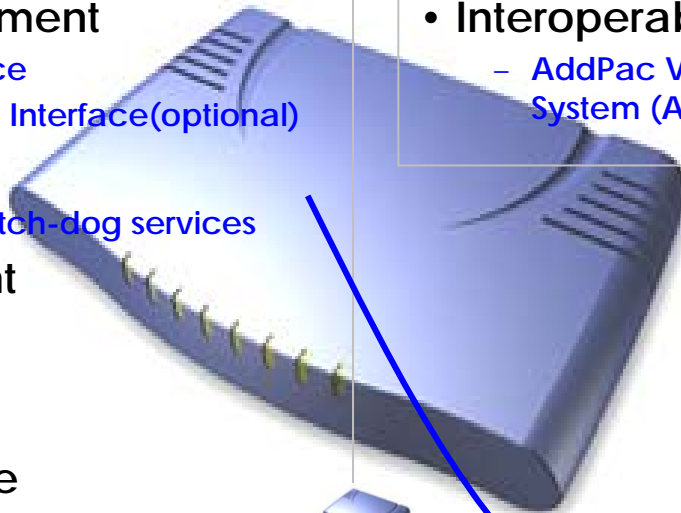
- Text based script downloading

- **Easy Set-up Service**

- MS Windows Graphical User Interface (GUI) based installation Software Solution
- Easy installation Set-up service

- **Interoperable with AP-VPMS Service**

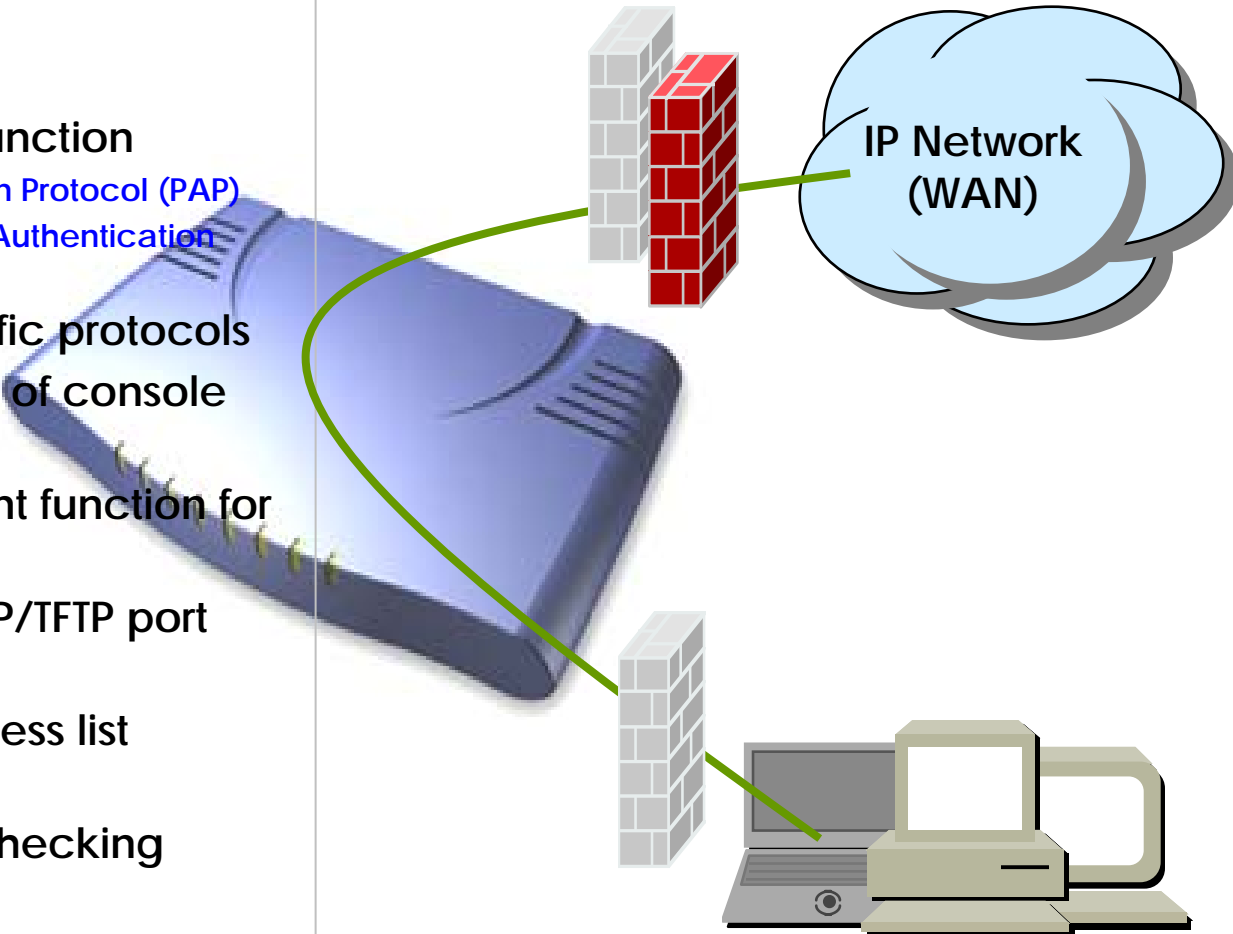
- AddPac VoIP Plug & Play Management System (AP-VPMS)



AP190 VoIP Gateway Product Overview

Security Managements

- IP packet filtering
- IP access list
- User authentication function
 - Password Authentication Protocol (PAP)
 - Challenge Handshake Authentication Protocol (CHAP)
- Enable/Disable specific protocols
- Auto-square connect of console and Telnet session
- Account Management function for multi-level user
- SNMP/TELNET/FTP/HTTP/TFTP port assignment function
- SNMP/TELNET/FTP access list management
- Boot mode security checking function



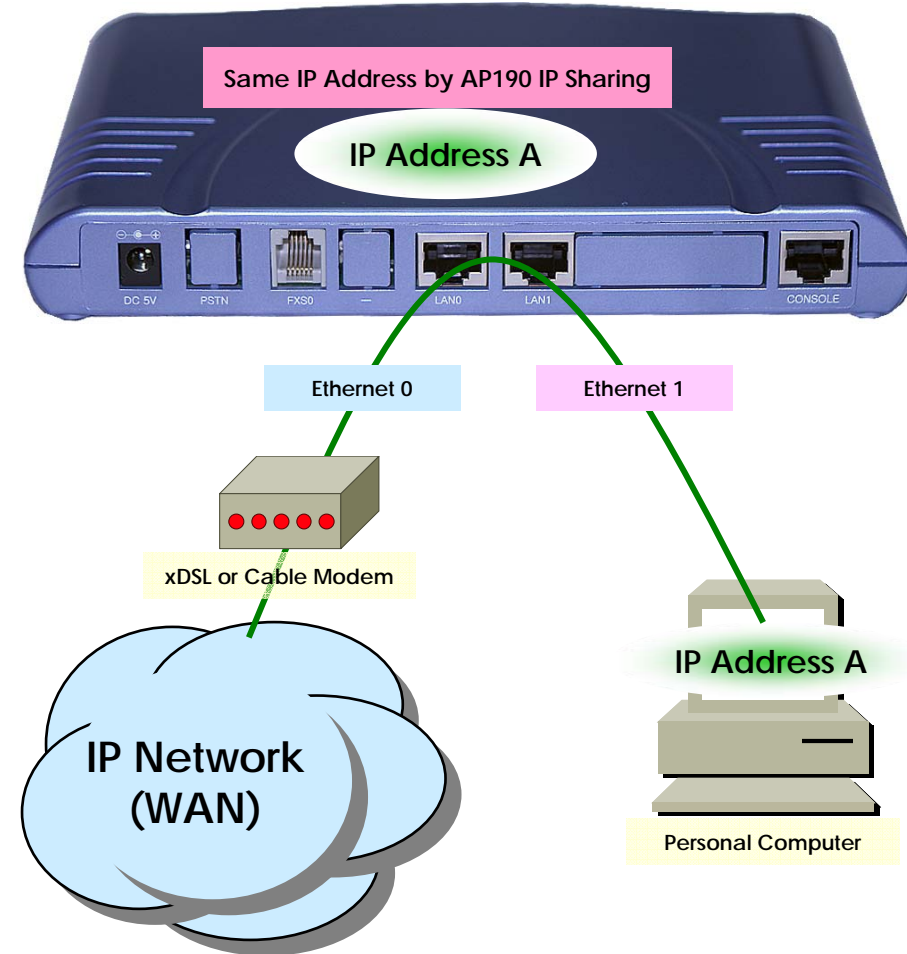
AP190 VoIP Gateway Product Overview

Network Scalability

- IP Sharing Feature
 - Single IP Address, Multiple IP Network Access
 - Public IP Address Sharing by VoIP Gateway
- IP Sharing Network Environment
 - Support Legacy Network Environment
 - xDSL Modem based Broadband Network
 - Cable Modem based Broadband Network
 - Leased line Network Environment
- Both support Fixed and Dynamic IP
- Support Standard Network Protocols
 - PPPoE
 - PPTP
 - DHCP
- Cascade(Stacking) Function
 - Single Public IP address with stacking multiple VoIP Gateways(virtual ports expansion)



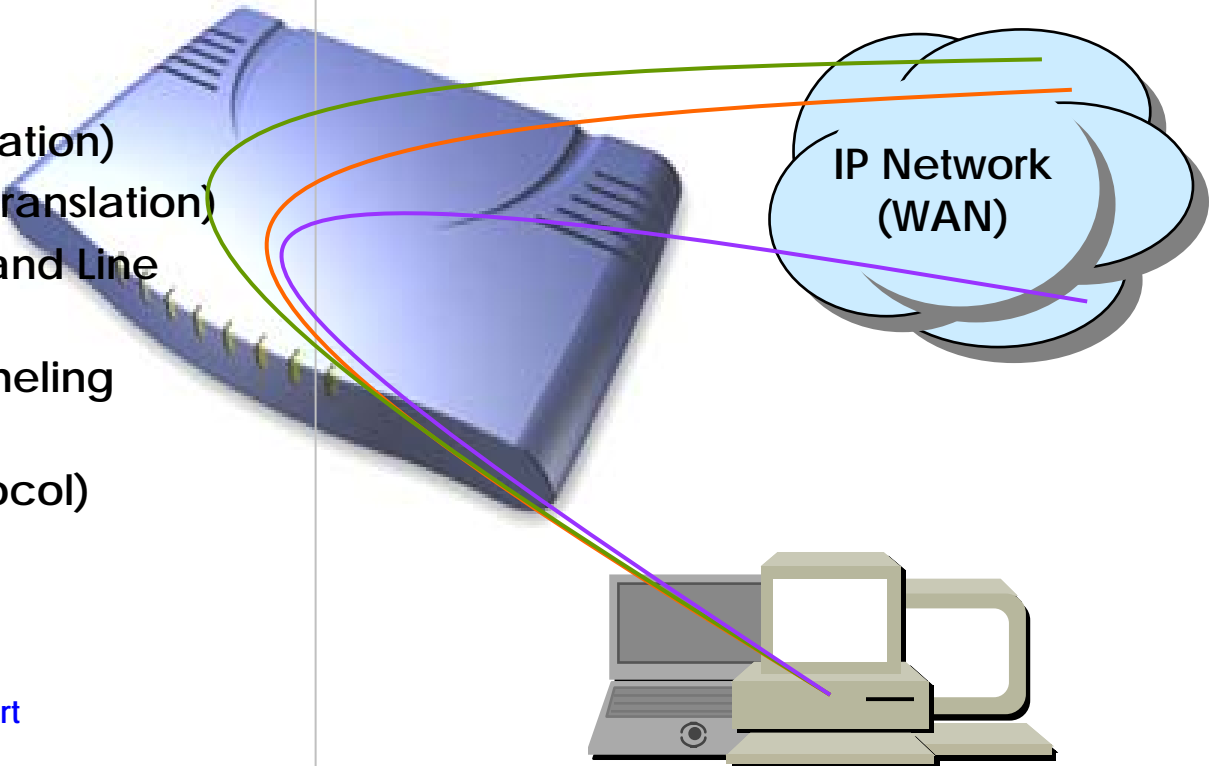
AP190 VoIP Gateway



AP190 VoIP Gateway Product Overview

Network Scalability (cont.)

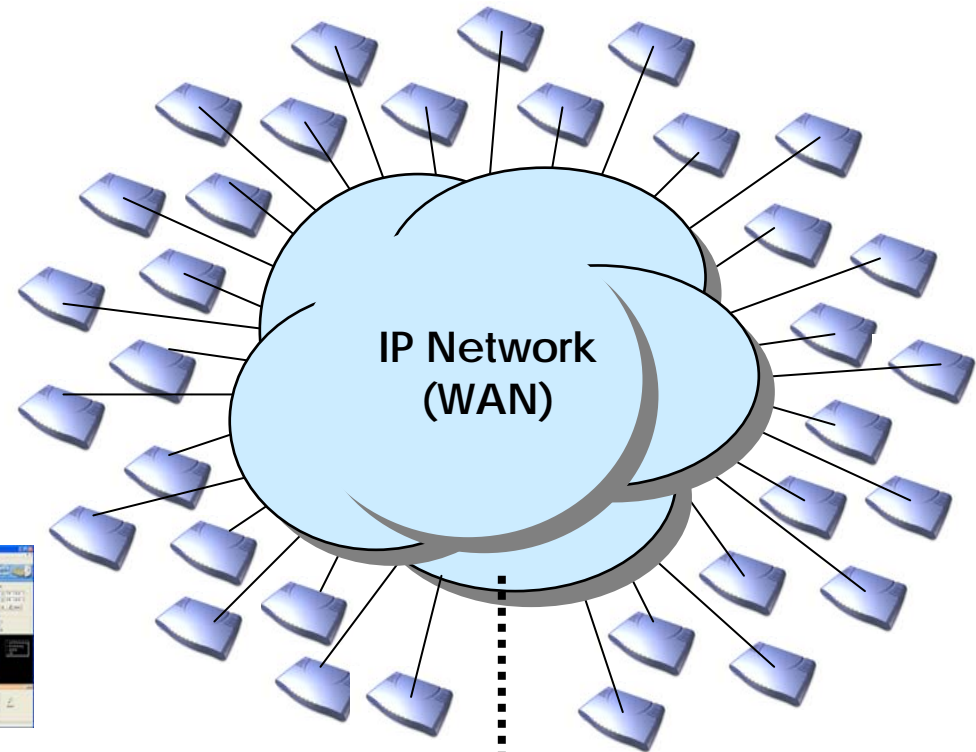
- Bridging Service
 - Spanning Tree Bridging protocol (IEEE) support
- DHCP
 - Server and Relay
- IP Accounting
- PAT (Port Address Translation)
- NAT (Network Address Translation)
- Cisco Style CLI (Command Line Interface)
- PPTP (Point-to-Point Tunneling Protocol)
- NTP (Network Time Protocol)
- FTP/TFTP
 - Server and Client support
- DNS
 - Dynamic DNS Client support



AP190 VoIP Gateway Product Overview

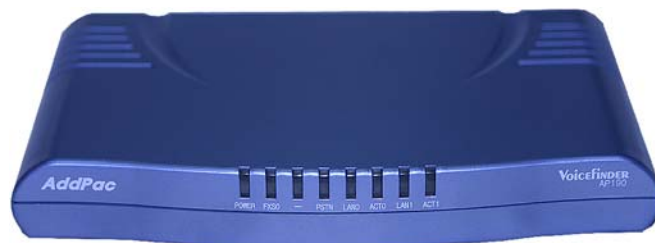
VoIP Plug & Play System (VPMS)

- AddPac AP-VPMS Support
 - AddPac VoIP Plug & Play System (VPMS)
 - Best EMS Solutions for AddPac VoIP G/W
- Requirements Hardware Platform
 - Over 1GHz Intel Pentium 4 Machine
 - Over 1GB Main Memory
 - Over 40GB Hard Disk Memory
 - Microsoft Windows Advanced Server or Windows 2000 Server or Windows XP Professional
 - DBMS : Microsoft MS-SQL Server 2000



AP190 VoIP Gateway Product Overview

AP190 Network Configurations



- Front View Side of AP190



- Rear View Side of AP190
 - 1-Port FXS, 1-Port Console
 - 2-Ports Ethernet,
 - 1-Port PSTN Back-up(Optional)

- AddPac AP-VPMS Support
 - AddPac VoIP Plug & Play System (VPMS)
 - Best EMS Solutions for AddPac VoIP G/W

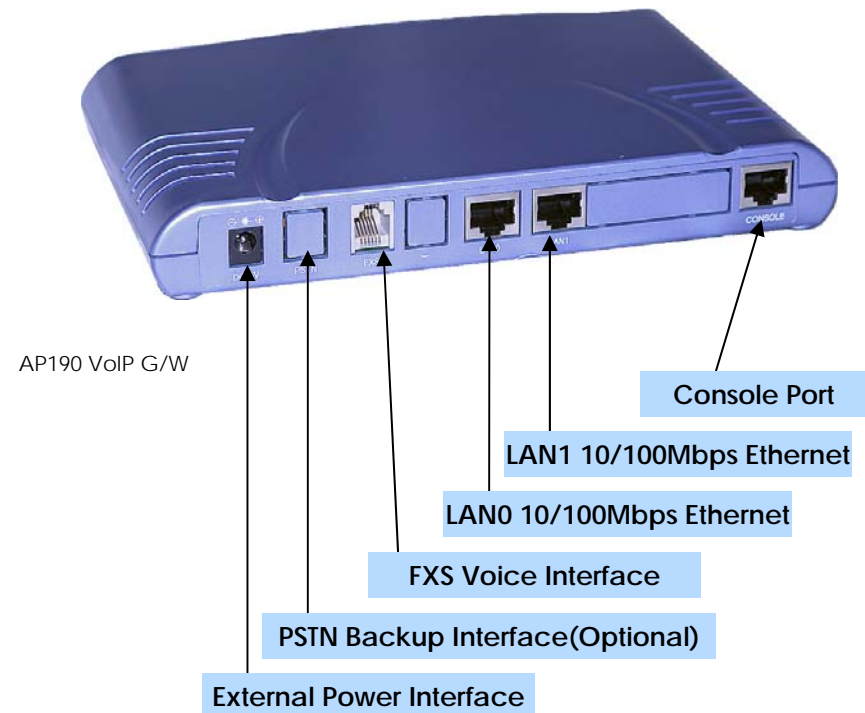
AP190 VoIP Gateway Product Overview

AP190 Hardware Specification

Hardware Specifications

AP190 VoIP Series	Basic Specifications
CPU	32Bit RISC Microprocessor
Voice Interface	1-Ports FXS Voice Interface(RJ-11)
Ethernet Interface	2-Ports 10/100Mbps Ethernet Interface(RJ-45)
Console Port	1-Port RS-232C Console Port(RJ-45)
PSTN Backup Port(Optional)	1-Port PSTN Backup Port(RJ-11)
Flash Memory	2Mbyte High-speed Flash Memory
Base Memory	16Mbyte High-speed SDRAM
Power Requirement	External Power Supply Adaptor / VAC 110~220V, 50/60Hz, 10Watt
Operating Temperature	0°C ~ 45°C (32 °F ~ 122°F)
Storage Temperature	-40°C ~ 85°C (-40°C ~ 185°F)
Relative Humidity	5% ~ 95% (Non-condensing)
Dimensions	26mm x 200mm x 137mm (H x W x D)
Weight (g)	400g

Network interface Configurations



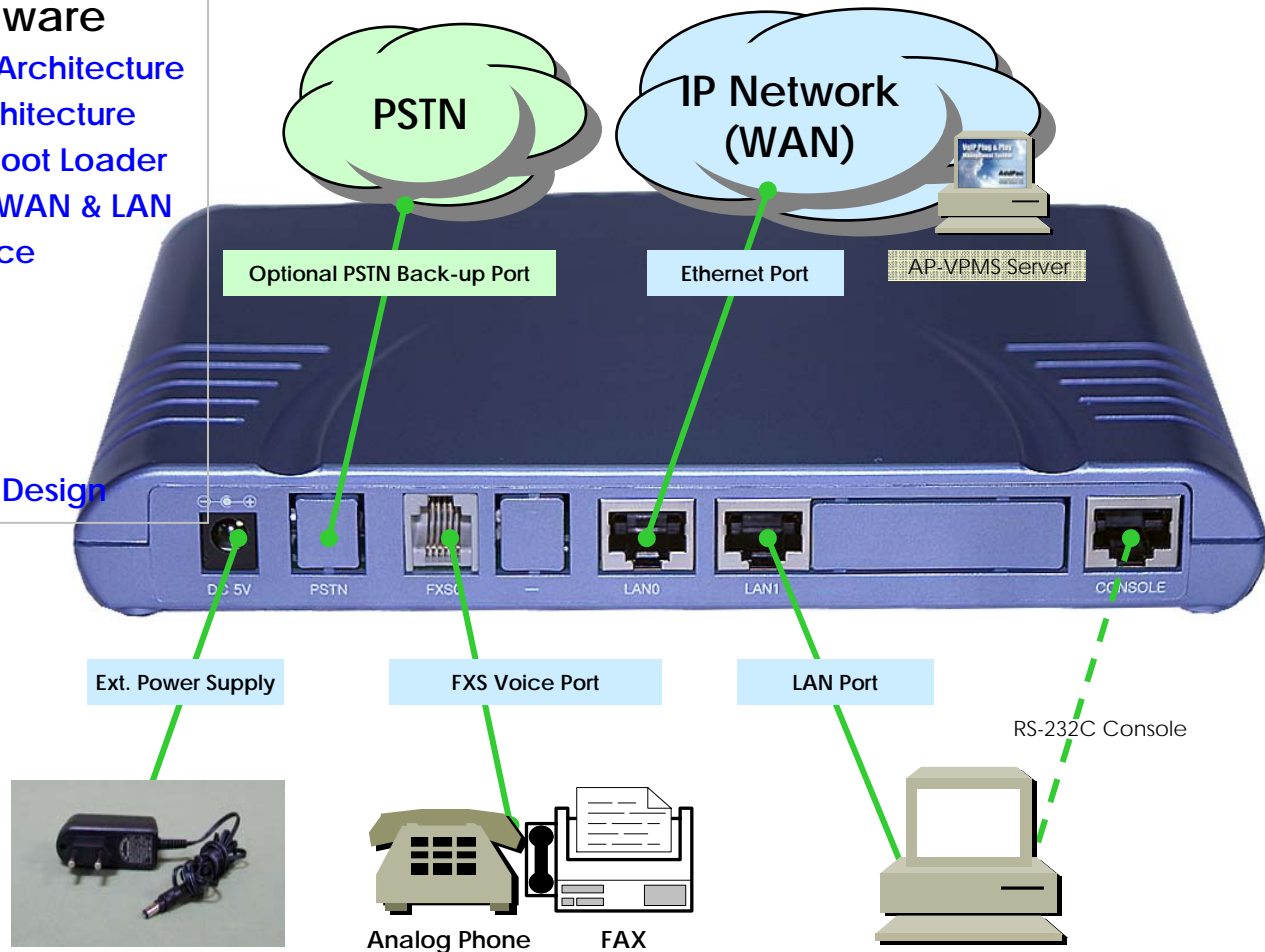
AP190 VoIP Gateway Product Overview

AP190 Networking Interface

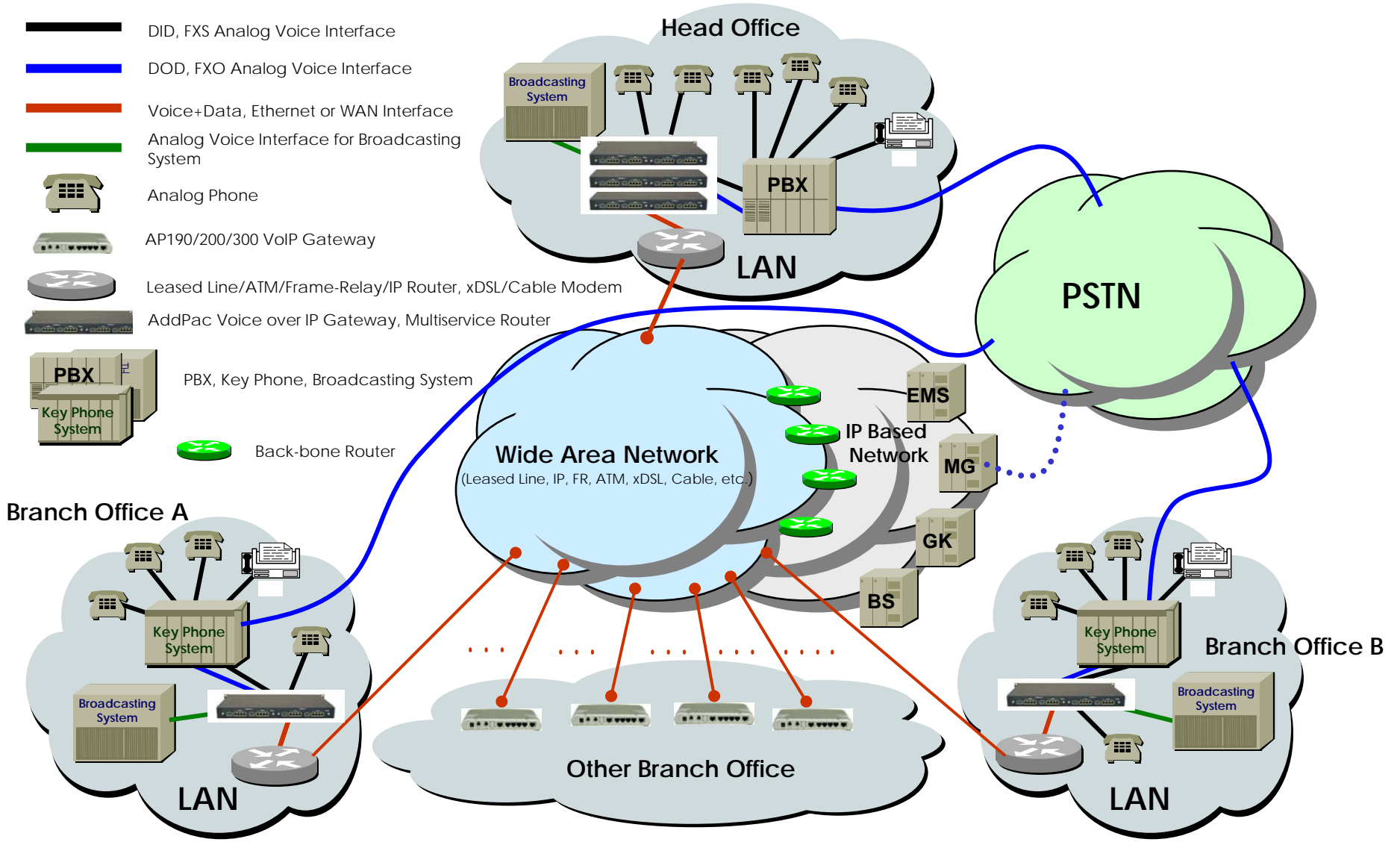
- **High-performance Hardware**
 - 32bit RISC Microprocessor Architecture
 - High-performance DSP Architecture
 - High-speed Memory with Boot Loader
 - Dual Ethernet Interface for WAN & LAN
 - Standard FXS Voice Interface
 - Standard PSTN Back-up Interface(Optional)
 - RS-232C Console Interface
- **Compact Design**
 - Small, Light, and Compact Design



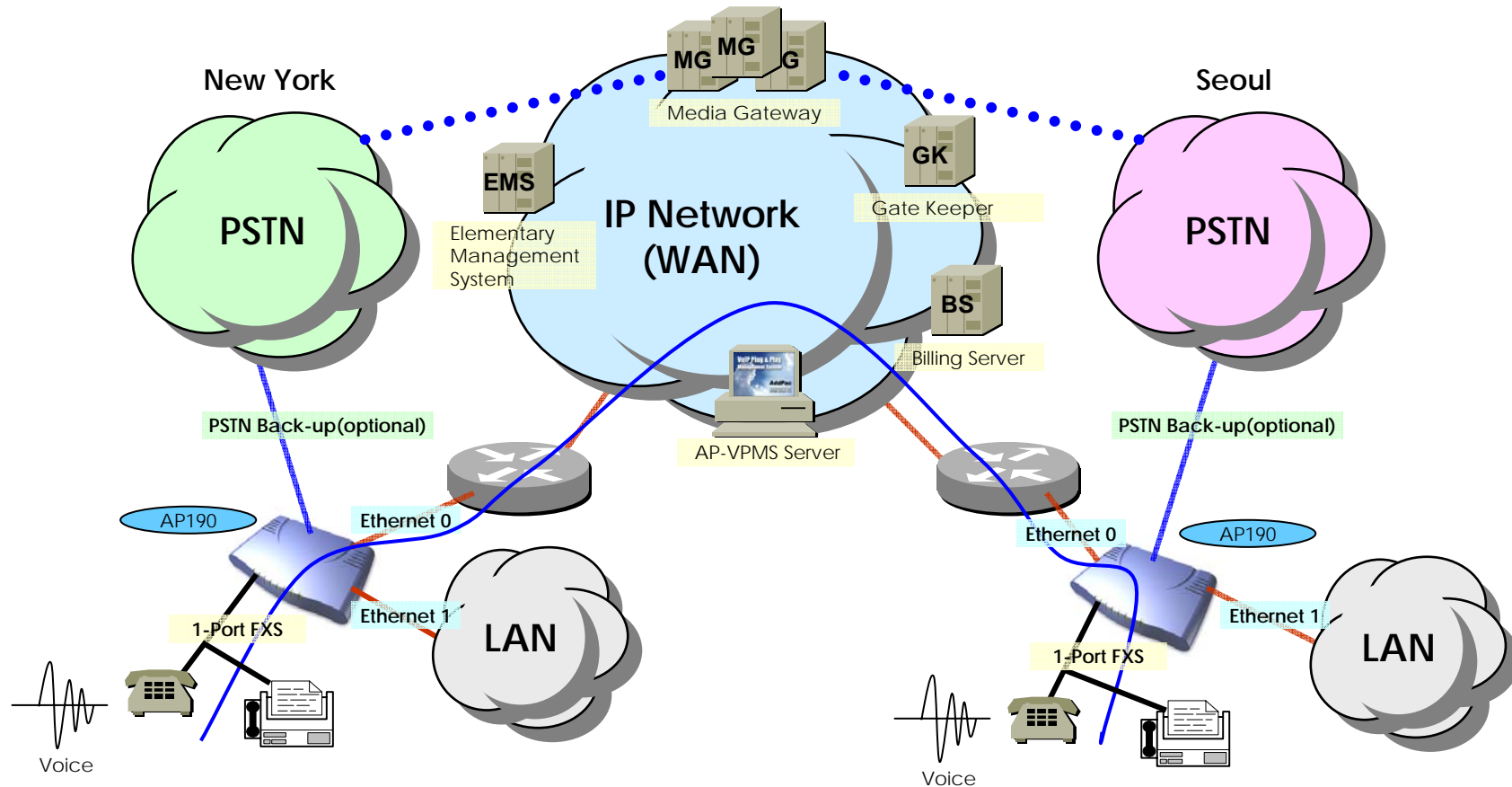
AP190 VoIP Gateway



AddPac VoIP Gateway Network Diagram Example



AP190 Voice Networking Configuration



— FXS Analog Voice Interface

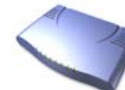
— FXO Analog Voice Interface

— Voice+Data, Ethernet or WAN Interface

••••• TRUNK n x E1 Voice Interface for PSTN Interworking



Leased Line/ATM/Frame-Relay/IP Router, xDSL/Cable Modem, etc.



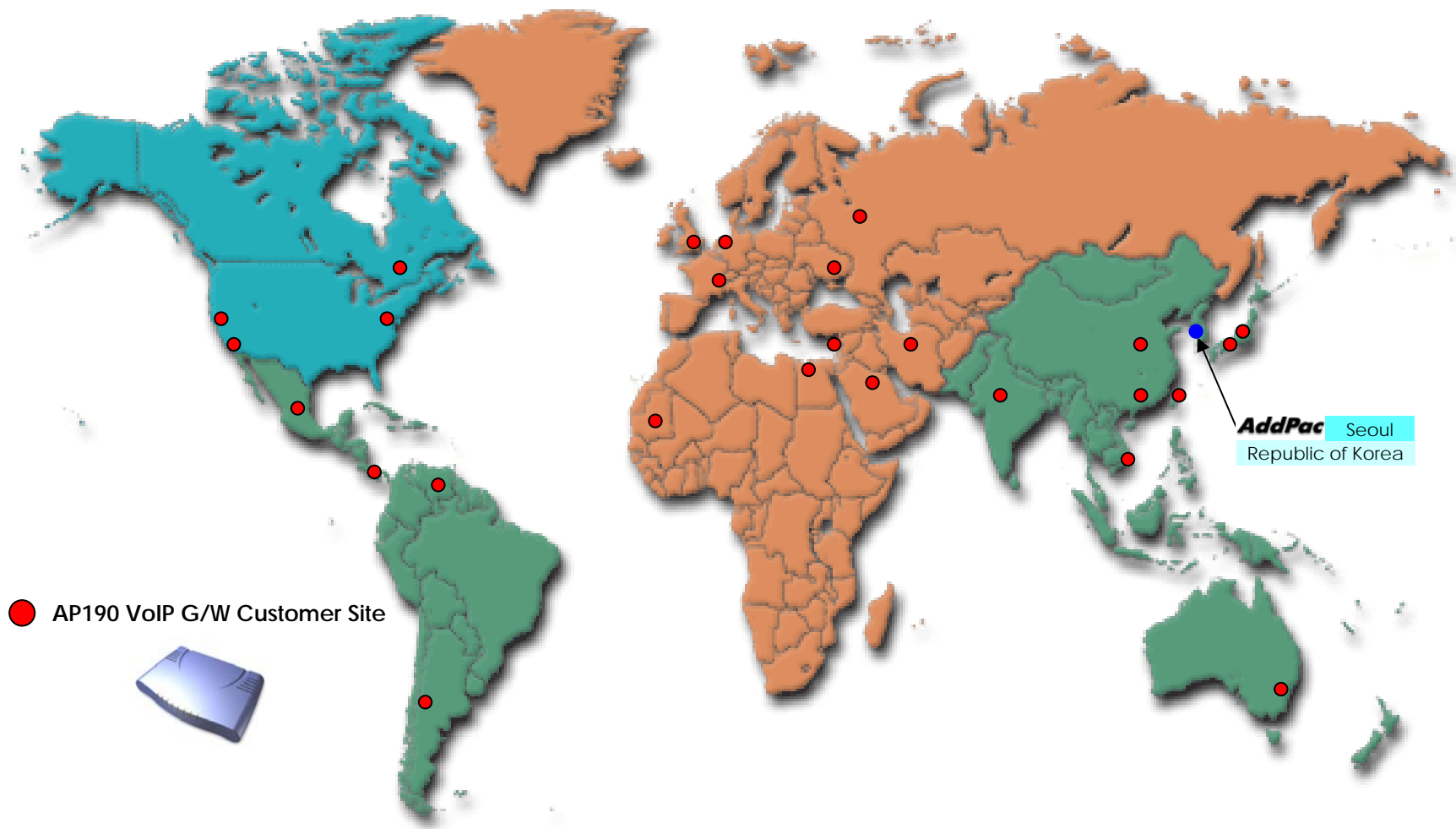
AddPac AP190 Voice over IP Gateway



Analog Phone

AP190 VoIP Gateway Product Overview

AP190 World-Wide Customer Site



AP190 VoIP Gateway Product Overview

AP190 Ordering and Pricing

- **AP190 VoIP Gateway Series**

- VoIP Gateway Hardware
 - High-speed 32bit RISC CPU
 - 1-Port FXS Voice port Configuration
 - 2-Ports 10/100BaseT Ethernet
 - Optional 1-Port PSTN Back-up
 - 1-Port RS-232C Console
 - Including Network Cable Set
- Built-in APOS Internetworking Software
- Including 1-Year Hardware Warranty
- Product Documents
 - [Installation Guide \(PDF\)](#)
 - [Quick APOS Operation Guide \(PDF\)](#)
 - [APOS Operation Guide \(PDF\)](#)

- **Pricing**

- AddPac Technology Regional Sales Managers
- Authorized Sales and Marketing Representatives
- Please Contact www.addpac.com



OEM and volume
pricing available!

AddPac Technology Co., Ltd.

Thank you !

www.addpac.com

Technical Sales and Marketing

AddPac Technology

sales@addpac.com