



# New AP-IP300B Premium IP Phone

High Performance Broadband Convergence Network  
IP Phone Solution

FXS Interface Support  
for Secondary Analog Phone



**AddPac**

**AddPac Technology**

Sales and Marketing

[www.addpac.com](http://www.addpac.com)

# Contents

- Product Overview
- Hardware Specification
- Software Service
- Audio & Voice Service and Features
- Network Service and Features
- Application Area
- Ordering Information



# Product Overview

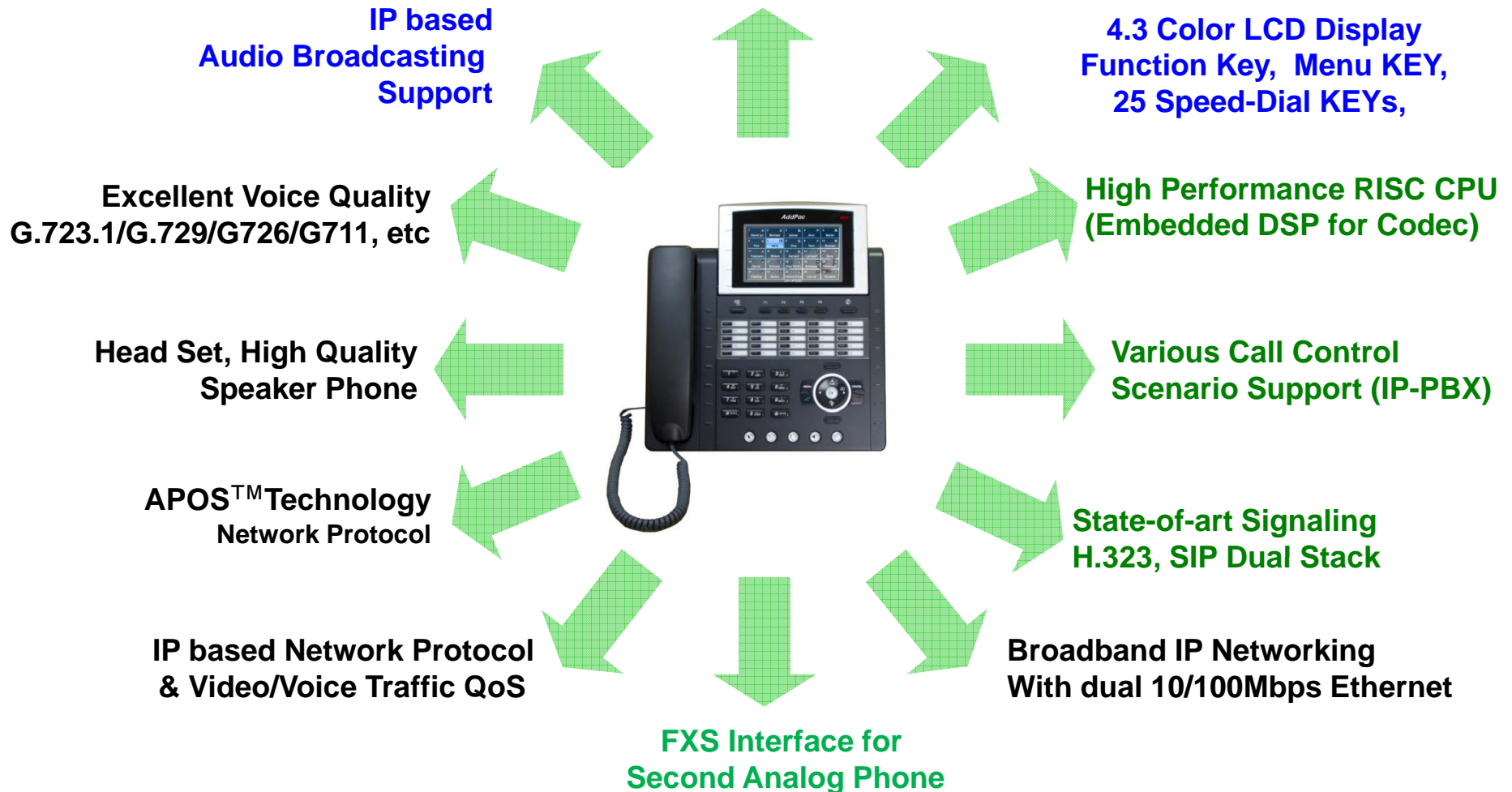
AP-IP300B Premium IP Phone

- IP Phone Solution
- Audio Broadcasting Solution
- High-performance Audio, and Voice Service
- Firmware Upgradeable Architecture
- VoIP Solution with Outstanding Network Service Capability
- Audio Privacy Protection

# Product Highlights

AP-IP300B Premium IP Phone

## High-End IP Phone Solution

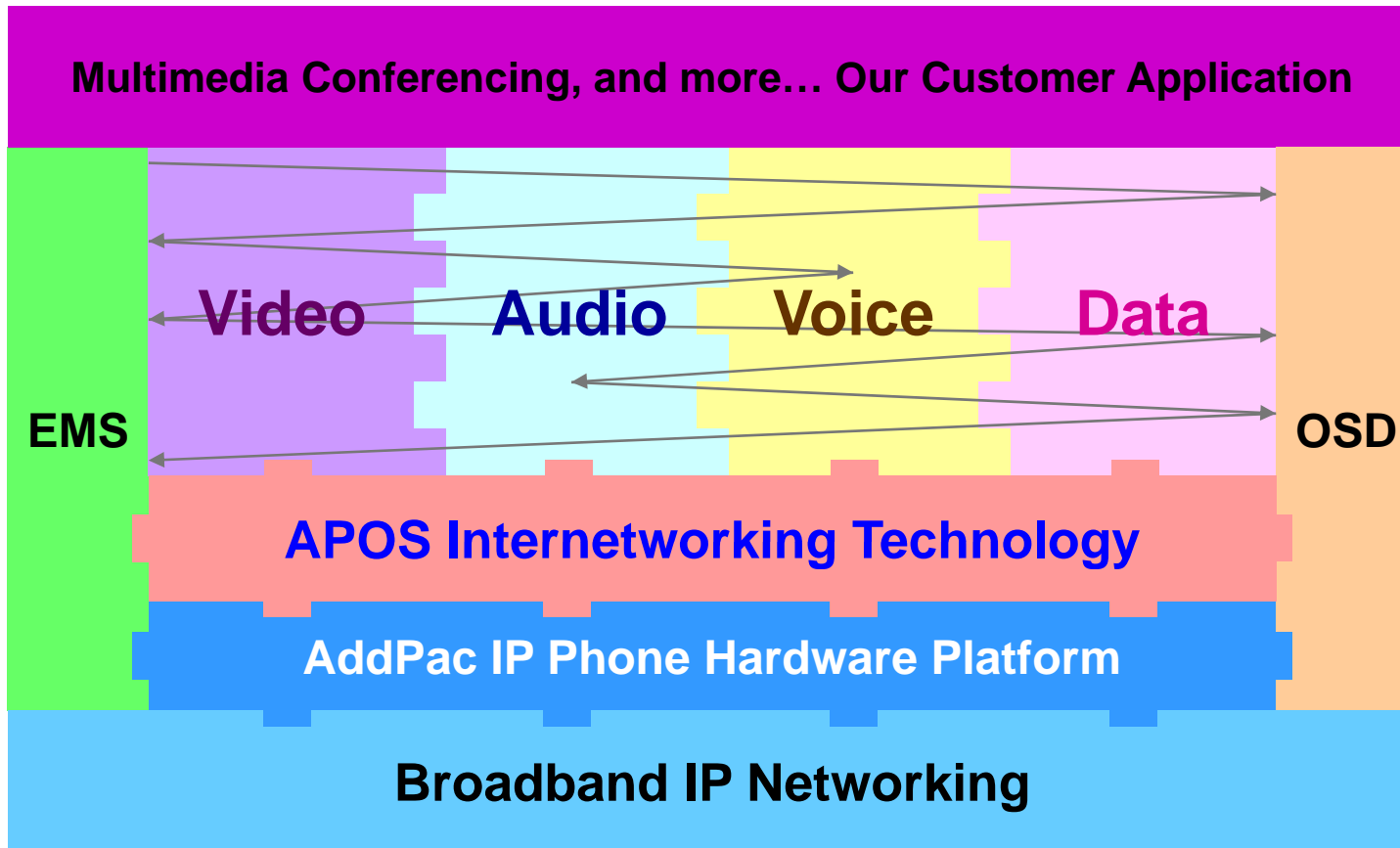


**AddPac**

[www.addpac.com](http://www.addpac.com)

# Multimedia Service

AP-IP300B Premium IP Phone



- APOS : AddPac Internetworking Operating System
- OSD : On- Screen Display
- EMS : Element Management System

# Hardware Specification

## AP-IP300B Premium IP Phone

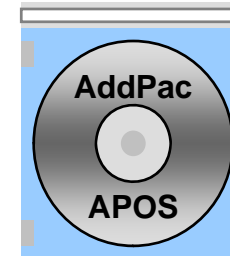
- RISC+DSP Microprocessor Computing Power (Dual Processor Architecture)
- High Quality 4.3 Inch Color LCD Panel
- 25 Speed Dial Key & User Presence Indication LED
- Optional Phone Interface
  - FXS Interface for Analog, Wireless Phone
- High quality Audio and Voice Interface
  - Stereo Audio Input Connector
  - Stereo Audio Output Connector
- Network Interface
  - Two(2) 10/100Mbps Fast Ethernet
- USB Host Mode Interface
  - USB Memory(Flash, HDD), USB Keyboard, USB Mouse, USB Wifi
- Power Supply
  - Power over Ethernet
  - External Power Adaptor (5V, 3A)



# Software Service

## AP-IP300B Premium IP Phone

- Built-in AddPac APOS Internetworking Software
  - Scalability, Functionality, and Stability Features
  - Audio Traffic QoS Control
- Programmable Video, Audio, and Voice Services
  - Audio, and Voice Codec
- Firmware Upgradeable Architecture
- Industry Standard IP based Network Protocol Features



# Audio & Voice Service and Features

## AP-IP300B Premium IP Phone

- Audio & Voice Networking Interface
  - Audio Input/Output Port (2 x 3.5mm Stereo Female Connector)
- VoIP based Signaling Protocol Support
  - H.323, SIP Multiple Signaling Protocol Stack
  - H.323 Gateway, Gatekeeper Support
- High-performance Audio & Voice Codec Support
  - Line IN/OUT : G.723.1, G.729, G.726, G.711 Audio Codec, etc
- Enhanced QoS Management Features for Voice Traffics



# Network Service and Features

## AP-IP300B Premium IP Phone

- Network Managements
  - Standard SNMP Agent (MIB v2) Support
  - Remote Management using Console, Telnet
  - Web based Management using HTTP Server Interface
- Security Functions
  - Standard & Extended IP Access List
  - Enable/Disable for Specific Network Protocols
  - Multi-level User Account Management
  - Auto-disconnect for Telnet/Console Sessions
  - PPP User Authentication Supports (PAP & CHAP)
- Operation & Managements
  - System Performance Analysis for Process, CPU, Connection Interface
  - Debugging, System Auditing, and Diagnostics Support
  - System Booting and Auto-rebooting with Watchdog Feature
  - System Managements with Data Logging
  - IP Traffic Statistics with Accounting

# Network Service and Features

## AP-IP300B Premium IP Phone

- Network Managements
  - DHCP Server & Relay Functions
  - Network Address Translation (NAT) Function
  - Port Address Translation (PAT) Function
  - Transparent Bridging (IEEE Standard) Function
    - Spanning Tree Bridging Protocol Support
    - Remote Bridging Support
    - Concurrent Routing and Bridging Support
  - Cisco Style Command Line Interface (CLI)
  - Network time Protocol (NTP) Support

# AP-IP300B IP Phone

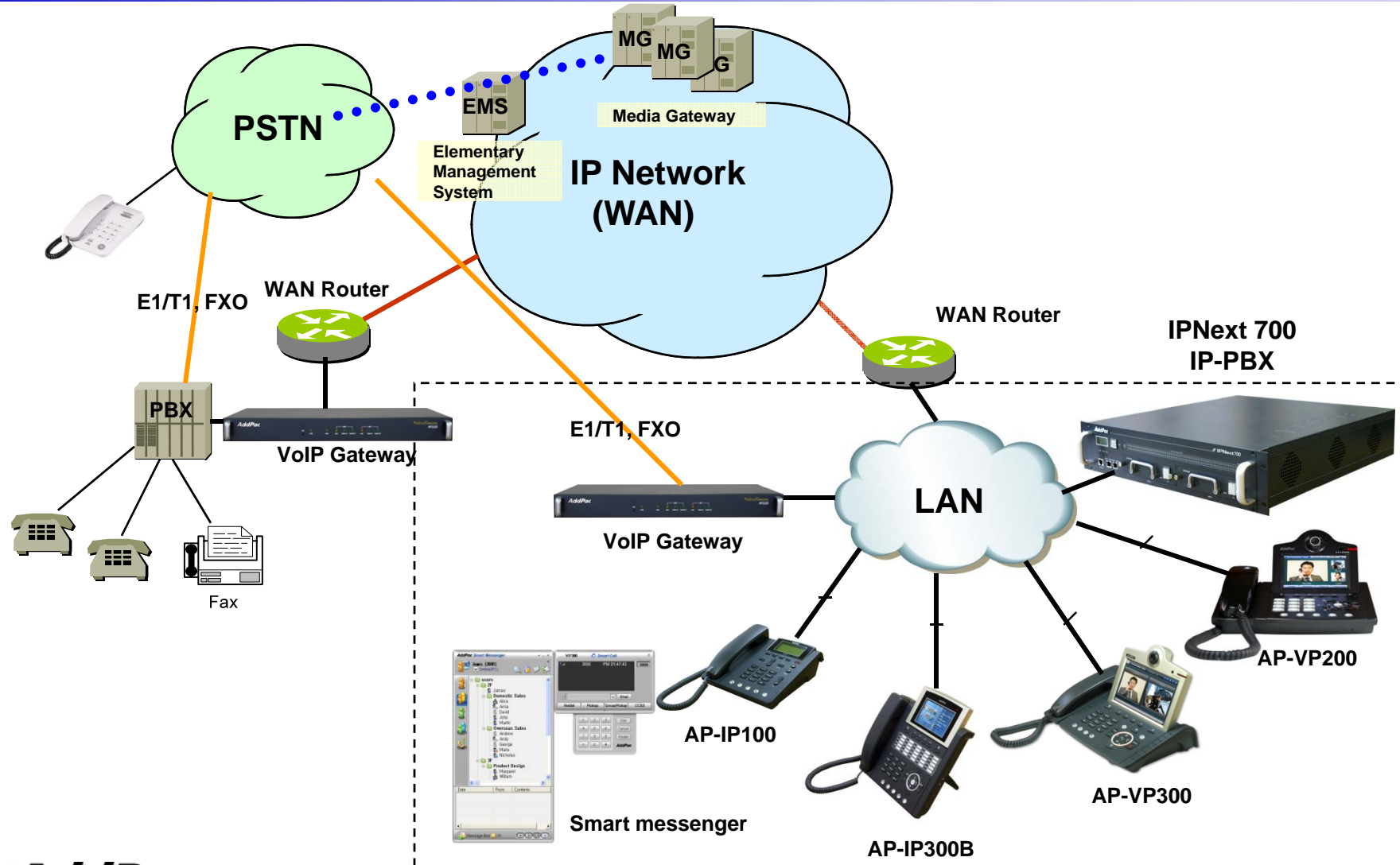
## Application Area

- IP-PBX IP Phone Terminal (SIP, H.323, etc)
- Secondary Analog Phone Interface
- Audio/Video Real-time Broadcasting
- Audio Conference



# Standard IP-PBX Application

AP-IP300B Premium IP Phone

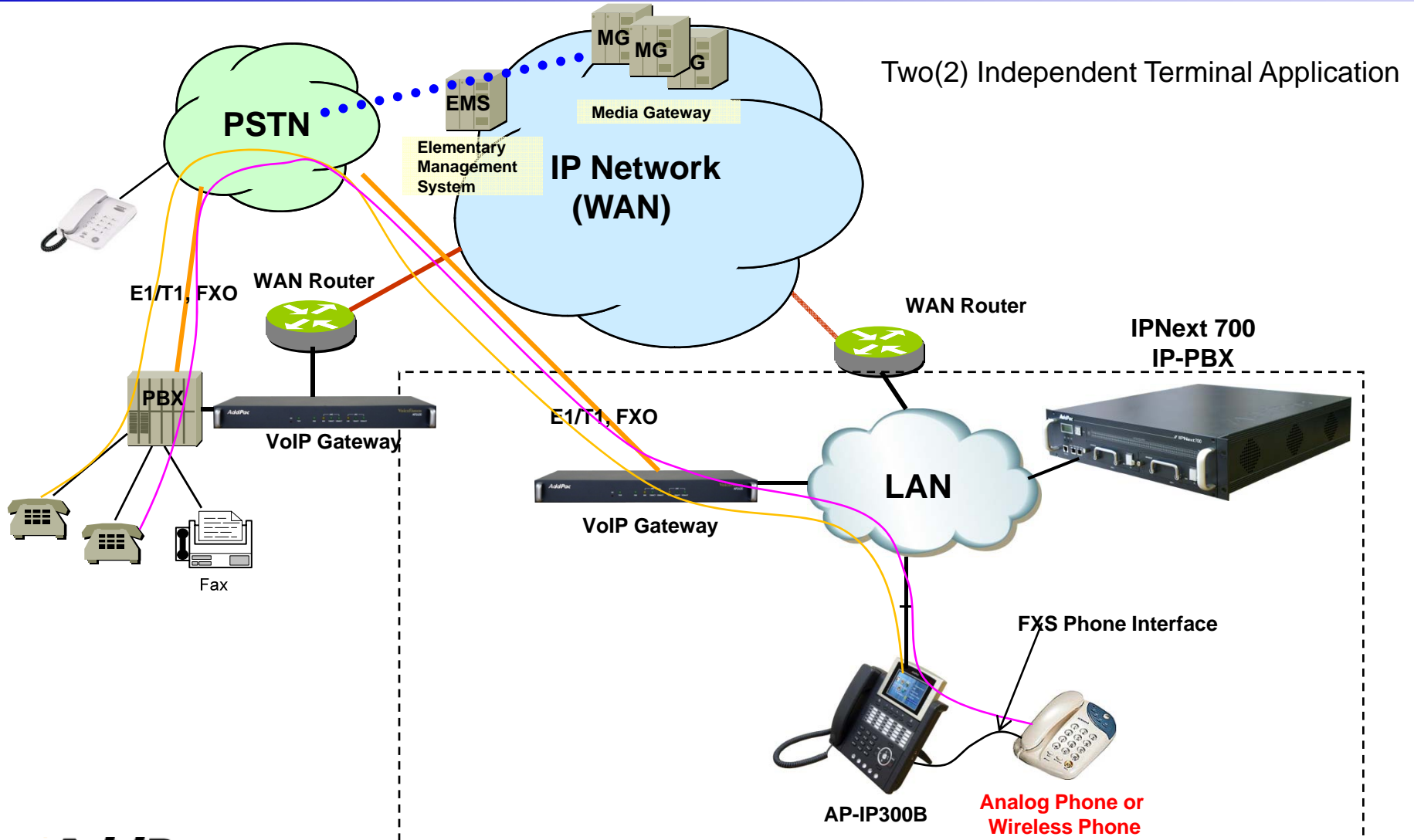


**AddPac**

[www.addpac.com](http://www.addpac.com)

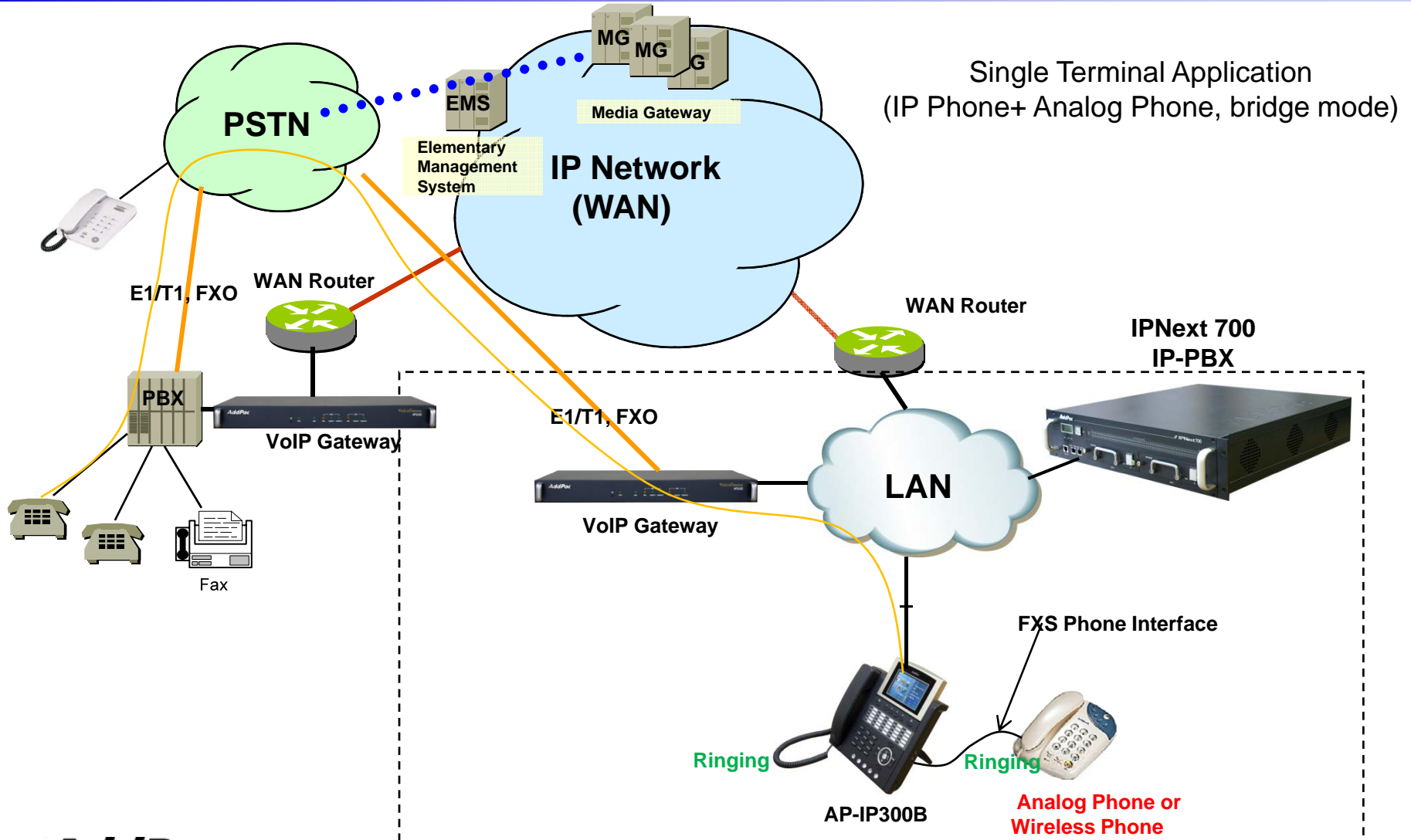
# Secondary Analog Phone Interface (CASE1)

AP-IP300B Premium IP Phone



# Secondary Analog Phone Interface(CASE2)

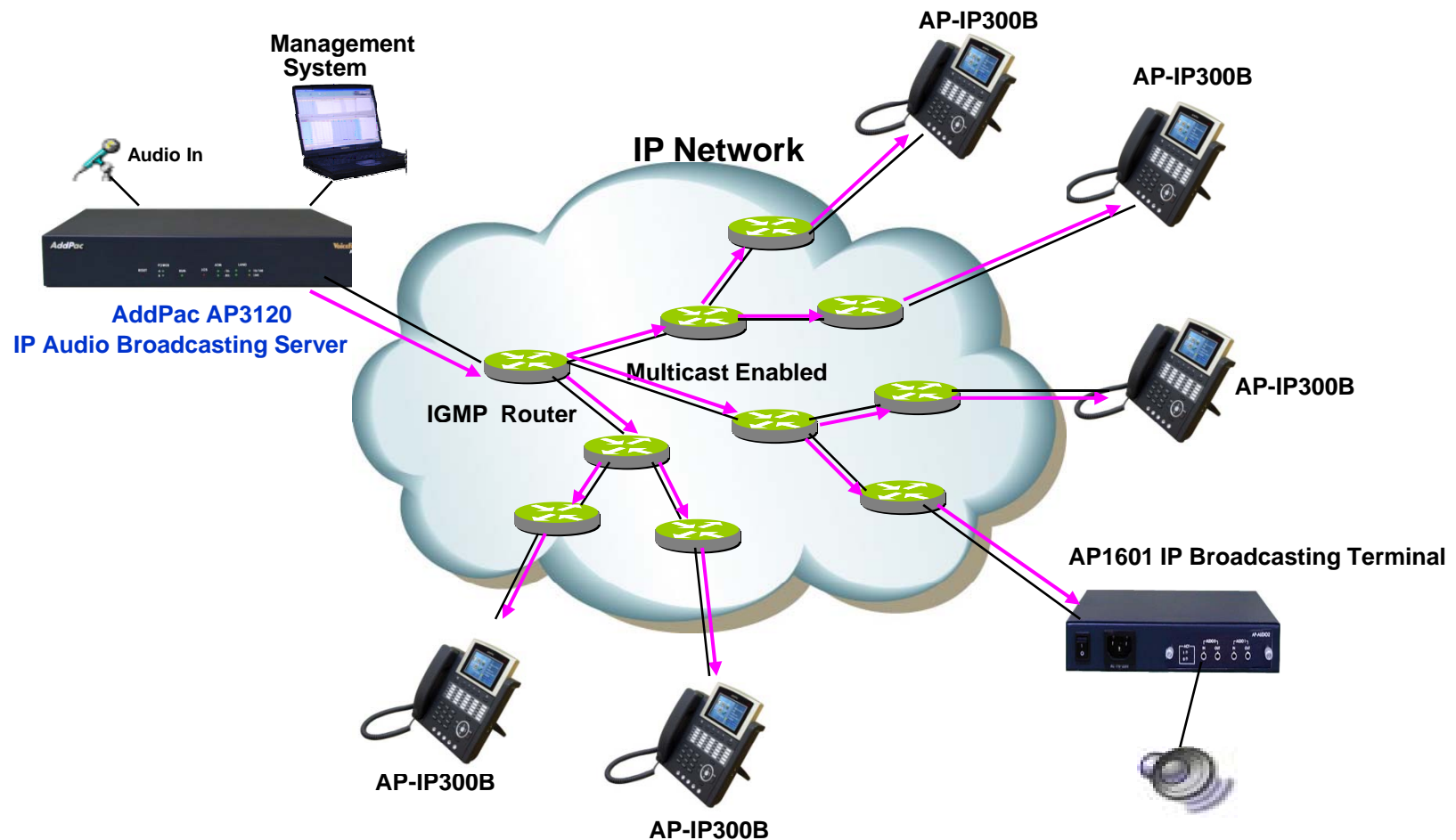
AP-IP300B Premium IP Phone



# Audio Real-time Broadcasting

AP-IP300B Premium IP Phone

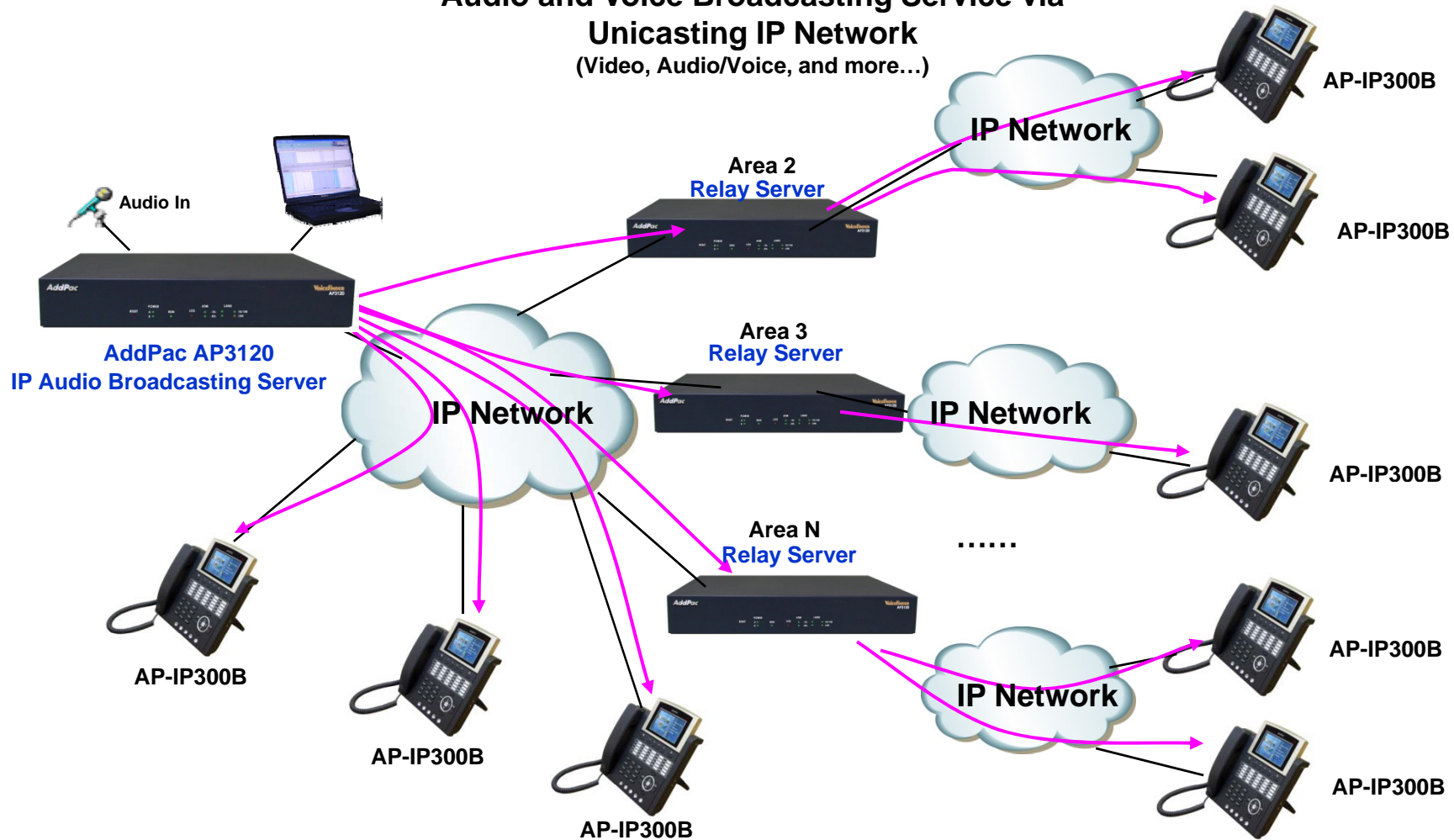
IP based Audio Broadcasting Service via  
Multicasting IP Network  
(Video, Audio/Voice, and more...)



# Audio Real-time Broadcasting

AP-IP300B Premium IP Phone

Audio and Voice Broadcasting Service via  
Unicasting IP Network  
(Video, Audio/Voice, and more...)

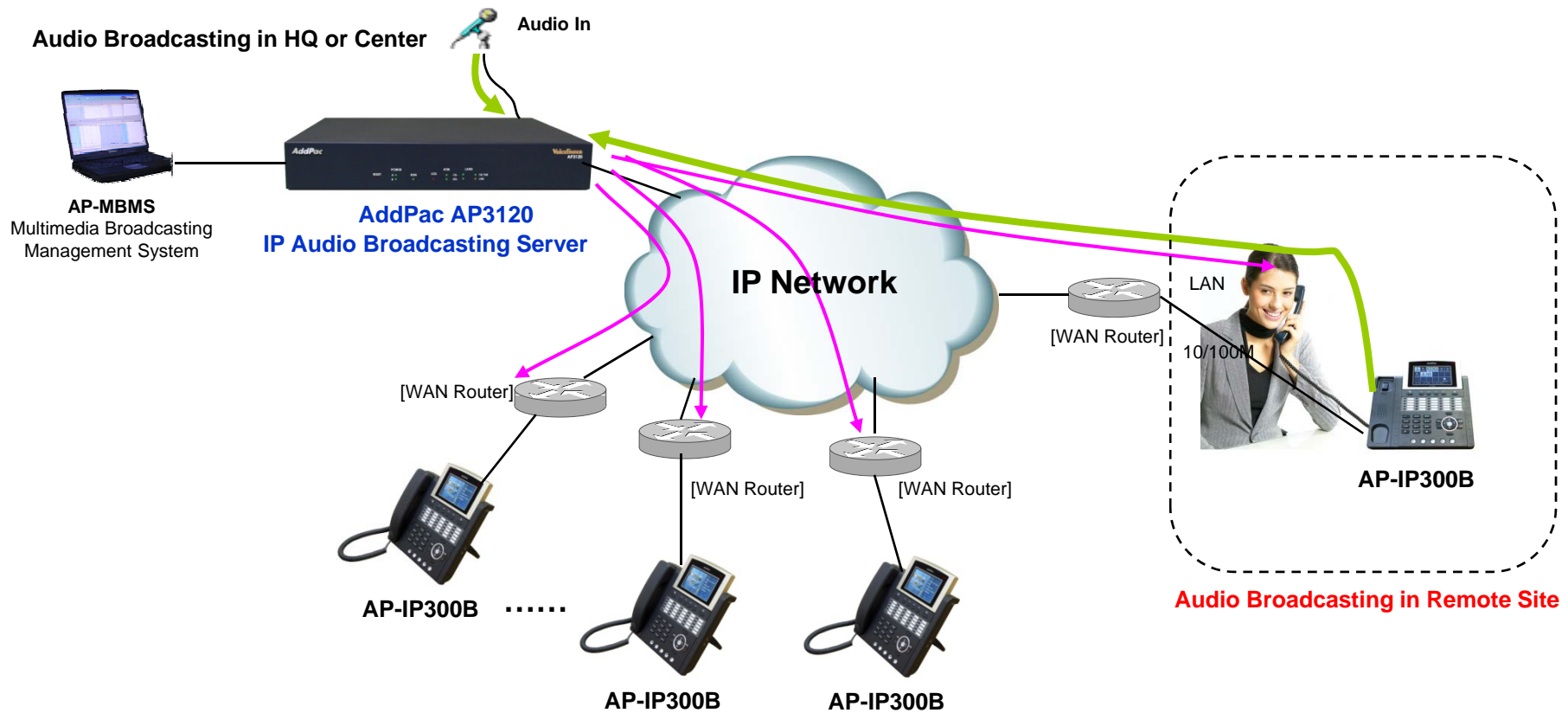




# Audio Real-time Broadcasting

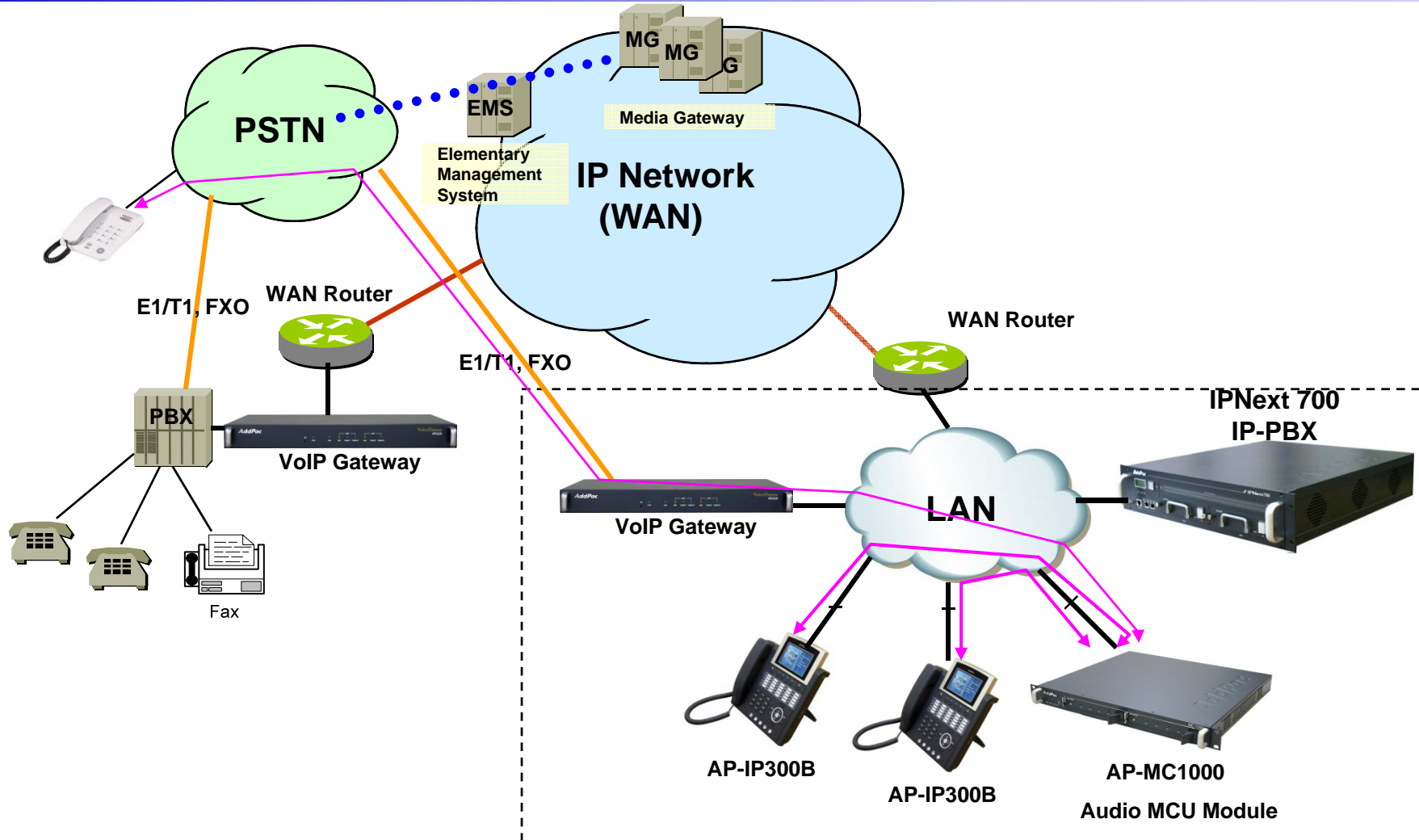
AP-IP300B Premium IP Phone

## Remote Site Audio and Video Broadcasting Service (Video, Audio/Voice, and more...)



# Audio Conferencing (Audio MCU)

AP-IP300B Premium IP Phone



# Ordering Information

- AP-IP300B Premium IP Phone Hardware
  - AP-IP300 IP Phone Main Body
  - RISC Microprocessor with Embedded DSP Architecture
  - 4.3Inch Color LCD, Function KEY, Menu KEY
  - External 3.5mm Audio Input/Output
  - 2-ports 10/100Mbps Fast Ethernet and 1-port RS-232C Console
  - Optional FXS Port for Phone Interface
  - Including Network Cable Set & Ext. Power Supply, etc.
- Built-in APOS Internetworking Software for AP-IP300B
- Including 1 Year Hardware Warranty
- Product Documents
  - Install and Operation Guide (PDF)
- Pricing
  - AddPac Technology Regional Sales Manager
  - Authorized Sales and Marketing Representatives
  - Please Contact [www.addpac.com](http://www.addpac.com)



# Thank you!

**AddPac Technology Co., Ltd.**  
Sales and Marketing

Phone +82.2.568.3848 (KOREA)

FAX +82.2.568.3847 (KOREA)

E-mail [sales@addpac.com](mailto:sales@addpac.com)