

## AP2520 VoIP Router

### High-performance, Compact Design



#### PassFinder AP2520 VoIP Router

PassFinder AP2520 VoIP Router provides high-performance IP-routing services including maximum 8 channels voice ports for small enterprise, government and other public offices as well as Internet game room and Internet based cyber apartment.

Moreover, the AP2520 VoIP Router is able to guarantee almost 100% line utilization with E1/T1 (2,048/1,544Mbps) data networking speed for high-speed Internet connectivity via WAN-to-LAN Routing with Voice over IP (VoIP) services.

In addition, PassFinder AP2520 VoIP Router can be used in various WAN, VoIP protocols such as PPP, Frame-Relay, HDLC, H.323, H.235 including Static, RIP v1/2, OSPF v2 routing protocols and network management features such as SNMP MIB v2, CLI, etc.

This router typically is designed using modular based architecture with fixed network interface configuration: 10/100Mbps fast Ethernet, synchronous serial port, asynchronous serial Port for console.

#### APOS Internetworking Software for AP VoIP Gateway

AddPac PassFinder Operating System (APOS) is best VoIP gateway and router software to provide scalability, reliability, stability, and QoS for internetworking solutions. APOS also provides optimized performance and industry standard network functionality with easy-to-use, easy-to-installation, and maintenance.

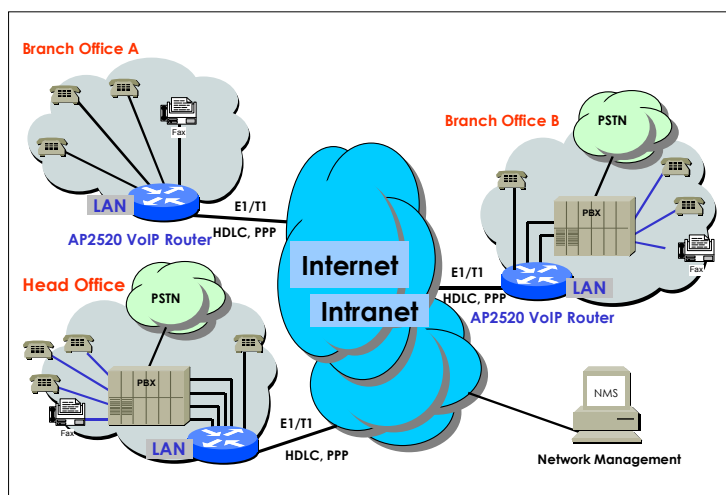
The AP2520 VoIP Router provides [best price-performance ratio](#) and [effective voice & data networking solution](#) for customer satisfaction.

# AddPac

#### Product Highlights

- Powerful 32bit RISC Microprocessor Architectures
- Fixed a Single Fast Ethernet & WAN Ports for E1/T1 Data Link with Two(2) Voice Interface Modules
- FXS, FXO, E&M and Digital E1/T1 Voice Modules for Voice Channels
- Standard WAN-to-LAN VoIP Router for Data Networking Applications
- Multi-protocol Routing Solutions between WAN and LAN Access with H.323 based VoIP Protocol
- ITU-T H.323 v3 VoIP Protocol with ITU-T H.235 Security Feature
- SIP protocol support compliant with IETF RFC3261 (or RFC2543)
- Supports Triple stack of H.323, SIP and MGCP
- G.723.1, G.729A, G.711 Voice Compressions
- Support Voice Processing Features
  - VAD, DTMF, CNFG, G.168, and T.38 G3 Fax Relay
- AddPac APOS Internetworking Software to provide Scalability, Functionality, Stability, and QoS Control for AddPac Router
- High-performance IP-Routing Capability with Reliability
- Static, RIP v1/2, OSPF v2, and IEEE 802.1Q VLAN Routing Protocols
- PPP, Frame-Relay & HDLC Protocols
- Traffic Queuing, F/R Flow Control, and SNMP MIB v2 for Network Management Features
- Standard & Extended Access List for Security Functions
- Essential Scalability Features such as DHCP Server & Relay, NAT/PAT, IEEE Transparent Bridging, IP Accounting, and Debugging/Diagnostics, etc.
- Remote Software Upgrade using FTP & TFTP
- Cisco Style Command Line Interface(CLI)

## Network Diagram Using AP2520 VoIP Router



## Hardware Specification

### Microprocessor

- CPU 32bit RISC Microprocessor

### Memory

- Flash Memory 4Mbyte
- Main Memory 32M bps High-Speed SDRAM
- Boot Memory 512Kbyte Flash Memory

### Network Interface

- Fixed WAN Port One(1) E1/T1 Serial Port
- Fixed LAN Port One(1) 10/100Mbps Ethernet
- Voice Interface Slot TWO(2) Voice Interface Slots
- Console Port One(1) RS-232C Interface

### Voice Interface Modules

- FXS Voice Module 4-Port FXS Voice Interface Module
- FXO Voice Module 4-Port FXO Voice Interface Module
- FXS&FXO Voice Module 2-Port FXS & 2-Port FXO Module
- E&M Voice Module 4-Port E&M Voice Interface Module
- Digital E1 Voice Module 1-Port Digital E1 Module (ISDN-PRI, R2)
- Digital T1 Voice Module 1-Port Digital T1 Module (ISDN-PRI, R2)

### Power & Operation Environments

- Power Requirement VAC 110~220V, 50/60Hz, 15Watt
- Operating Temperature 0°C to + 50°C (32° to 122°F)
- Storage Temperature -40°C to +85°C (-40° to +185°F)
- Relative Humidity 5% to 95% (Non-condensing)

### Dimensions

- H X W X D (mm) 44mm X 444mm X 220mm (19" Rack Mountable Chassis)
- Weight(Kg) 3.5Kg

## Support Protocols & Services

### IP Routing Protocols

- Static, RIP v1/2, OSPF v2, and IEEE 802.1Q VLAN Routing

### WAN Protocols

- Point-to-Point Protocol (PPP)
- Frame-Relay PVC with Inverse ARP
- High-level Data Link Control(HDLC) Protocol
- HDLC Encapsulation (Interoperability with CISCO HDLC)

### Voice over IP Services

- ITU-T H.323 v3 VoIP Protocol with ITU-T H.235 Security Feature
- SIP protocol support compliant with IETF RFC3261 (or RFC2543)
- H.323 and SIP dual stack support
- Voice Processing Features Supports
  - VAD, DTMF, CNG, G.168 and T.38 G3 FAX Relay

- ITU-T H.323 Gateway, Gatekeeper Support
- Enhanced QoS Management Features for Voice Traffics

### Network Managements

- Traffic Queuing and Frame-Relay Flow Control
- Standard SNMP Agent (MIB v2) Support
- Remote Management using Console, Rlogin, Telnet
- Web based Managements using HTTP Server

### Security Functions

- Standard & Extended IP Access List
- Access Control and Data Protections
- Enable/Disable for Specific Protocols
- Multi-Level User Account Management
- Auto-disconnect for Telnet/Console Sessions
- PPP User Authentication Supports
  - Password Authentication Protocol (PAP)
  - Challenge Handshake Authentication Protocol (CHAP)

### Operation & Managements

- System Performance Analysis for Process, CPU, Connection I/F
- Configuration Backup & Restore for APOS Managements
- Debugging, System Auditing, and Diagnostics Support
- System Booting and Auto-rebooting with Watchdog Feature
- System Managements with Data Logging
- IP Traffic Statistics with Accounting

### Other Scalability Features

- DHCP Server & Relay Functions
- Network Address Translation (NAT) Function
- Port Address Translation (PAT) Function
- Transparent Bridging (IEEE Standard) Function
  - Spanning Tree Bridging Protocol Support
  - Remote Bridging Support
  - Concurrent Routing and Bridging Support
- Cisco Style Command Line Interface(CLI)
- Load Balancing Support
- Network time Protocol(NTP) Support
- Remote Upgrade for APOS Management using FTP/TFTP

### Ordering Information

- AP2520-01 : AP2520R VoIP Router Standard Configuration
  - Two(2) Voice Integration Module Slots for FXS, FXO, E&M and Dual Digital E1 trunk interface
  - One(1) Fast Ethernet, One(1) Ethernet, Console
  - 32bit RISC CPU, 8MB Flash, 32MB SDRAM
  - APOS v5.xx with Operation Manual
  - Including CAB-LAN, CAB-CON
- AP-FXS4 : 4 Port FXS Interface Module
- AP-FXO4 : 4 Port FXO Interface Module
- AP-FXO2FXS2 : 2 Port FXS & 2Port FXO Interface Module
- AP-E&M4 : 4 Port E&M Interface Module
- APVI-1E1 : 1 Port Digital E1 ISDN-PRI Network Module
- APVI-1T1 : 1 Port Digital T1 ISDN-PRI Network Module
- CAB-LAN : RJ45 Ethernet Cable
- CAB-CON : RJ45 RS-232C Console Cable

## Contact Information

Web site : <http://www.addpac.com>

E-mail : [info@addpac.com](mailto:info@addpac.com)

## AddPac Technology Co., Ltd.

3F, Jeong-Am Bldg., 769-12, Yeoksam-Dong  
Kangnam-Gu, Seoul, 135-080, KOREA  
Phone +82 2 568 3848  
Fax + 82 2 568 3847

2000, AddPac is a registered trademark of AddPac Technology.  
Specifications and features subject to change without notice.  
All brands & products are trademarks of their respective organization.