



AP900

AP900 8-Port FXS VoIP Gateway

VoiceFinder AP900 VoIP gateway provides high-performance voice over IP(VoIP) solution including IP-routing services for medium enterprise, and other public offices as well as Internet game room and Internet based cyber apartment.

This VoiceFinder AP900 VoIP gateway maintains best voice quality under low speed network using the latest voice compression algorithm and enhanced QoS management features of AddPac Technologies.

In addition, VoiceFinder AP900 VoIP Gateway can be used in various network environments such as leased line, ADSL, and Cable Modem networking with fixed IP and dynamic IP environments. And VoiceFinder AP900 VoIP Gateway supports various network protocols such as IP-routing, bridging, PPP, NAT/PAT, and network management features such as SNMP MIB v2, Cisco-style CLI, Web, etc.

This VoIP gateway typically is designed using high-performance 32bit RISC microprocessor based architecture with fixed network interface configuration : 4-Port FXS& 4-Port FXO (Model A) , 8-Port FXS Voice Interfaces (Model B type), 8-Port FXO Voice Interface (Model C), 2-Port 10/100Mbps Ethernet Interface for LAN & WAN Interfaces, 1-Port RS-232C Console Port(RJ45).

Various VoIP gateway series of AddPac is approved for its high performance and reliability in world wide markets. AddPac provides highly advanced VoIP services in order to meet demanding and evolving business requirements of customers. Especially AP900 has been developed through years of experiences and accumulated know-how from existing enterprises and communication markets. AP900 provides concurrent triple stack such as H323, SIP, MGCP and QoS (Quality of Service) for high quality of communication service. This will satisfy customers with high expectation.

APOS Internetworking Software

APOS™(AddPac Internetworking Operating System) is AddPac's unique software which supports data, voice, video and security. It provides scalability, reliability, stability and QoS for internetworking solutions. It also provides optimized performance and industry standard network functionality with easy-to-use, easy-to-installation and maintenance.

Product Highlights

- Powerful RISC Microprocessor Architecture + Voice DSP Architecture
- High Quality Voice
- Two(2) 10/100Mbps Fast Ethernet Interface
- RS-232C (RJ45) Console Port for CLI Interface
- Front Panel LEDs for Real-time Status Monitoring
- VoIP Interface
 - 4-Port FXS and 4-Port FXO : Model A
 - 8-Port FXS : Model B
 - 8-Port FXO : Model C
- Concurrent Triple Stack of SIP, H.323, MGCP
- High Level VoIP Signaling Protocol Debugging and Tracing Features
- Voice Processing Features
 - VAD, DTMF,CNG,G.168, T.38 G3 Fax Relay
 - G.723, 729A, G.726, G711 Voice Compression
- Polarity Inversion, Caller ID, etc
- SNMP MIB V2 for Network Management
- Standard & Extended Access List for Security
- Essential Scalability Features such as DHCP Server & Relay, NAT/PAT, IEEE Transparent Bridging, and Debugging/Diagnostics, etc.
- Remote Firmware Upgrade Through FTP & TFTP Protocol
- CISCO-style CLI (Command Line Interface)
- AddPac VPMS (VoIP Plug&Play Management System) Support for Large Scale VoIP System Deployment

AP900 Applications

- Inter-Office Internet Telephony System
- VoIP Gateway for Enterprises
- Media Gateway of IP-PBX

Hardware Specification

- RISC + Voice DSP Microprocessor Architecture
- Memory
 - System memory 4Mbyte Flash Memory
 - Main memory 32Mbyte SDRAM
- Analog VoIP Interface (8x RJ11)
 - 4-Port FXS and 4-Port FXO : AP800A
 - 8-Port FXS : AP800B
 - 8-Port FXO : AP800C
- Ethernet Interface
 - 10/100Mbps 2-port Ethernet (2xRJ-45)
- Console Port
 - RS-232C 1-port Console (RJ-45)
- Power ON/OFF Switch
- Front Panel Status LEDs (LAN, FXS Ports)

Power & Operational environment

- Adaptor VAC 110~220V, 50/60Hz
- Power 5V, 5A, 25Watt
- Temperature 0°C~+45°C (operating)
- Temperature -40°C~+85°C (storage)
- Humidity 5%~95%

Dimensions

- H x W x D: (mm) : 44mm x 265mm x 165mm
- Weight : 1.2Kg

IP Routing Protocol

- Static and IEEE802.1Q VLAN Routing

WAN Protocol

- Broadband IP Network Protocol
- PPP over Ethernet
- Standard Compliant WAN Network Protocol

Voice over IP Service

- H.323, SIP, MGCP Triple Concurrent VoIP Signaling Protocol
- VAD, DTMF, CNG, G.168, T.38 FAX Relay
- Voice Codec : G.723, G.729, G.726, G.711, G.711PLC
- PSTN Backup Interface
- High Level VoIP Signaling Debugging Features
- Polarity Inversion Feature
- Various VoIP Features
- Interoperable with Diverse VoIP Gateways
- Interoperable with Diverse VoIP Gatekeeper, SIP Proxy, MGC

Operation & Management

- Performance Analyzing (Process, CPU, Interface)
- Configuration Backup and Restore for APOS Management
- Debugging and Diagnosis Features
- System Booting/Rebooting through Watch Dog
- Data Logging Features
- IP Traffic Statistics through Accounting
- Debugging/Diagnostic

Network Management

- Standard SNMP Agent (MIB v2) Support
- Console, Telnet, Web Based Management
- Remote Download via FTP/TFTP
- Remote Firmware Upgrade using FTP/TFTP

Traffic QoS Control

- Traffic QoS Control Feature For Services
- Voice, Data Prioritizing Control
- Various QoS Algorithm Support

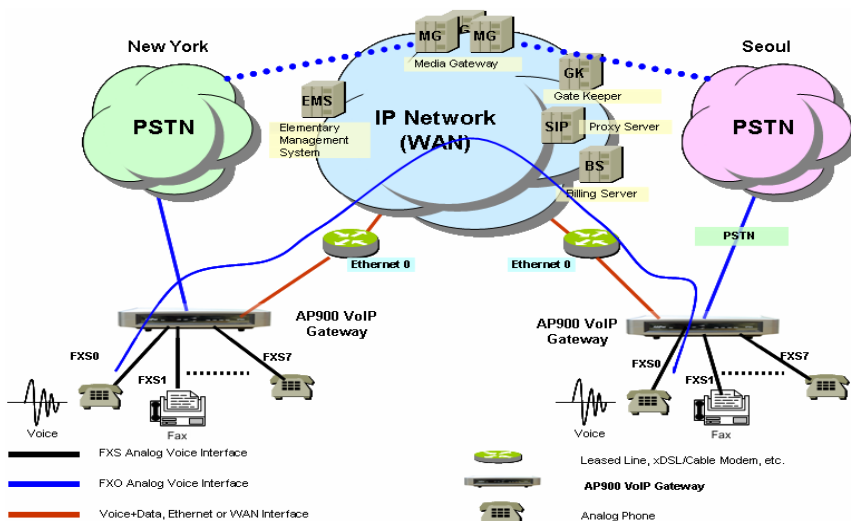
Security Feature

- IP Packet Filtering / Access List
- Access Control and Data Protections
- Enable/Disable for Specific Protocols
- Multi-level User Account Management
- Auto-disconnect for Telnet/Console Sessions
- PPP User Authentication Support
 - Password Authentication Protocol (PAP)
 - Challenge Handshake Authentication Protocol (CHAP)

Other Features

- DHCP Server and Relay
- Network Address Translation (NAT)
- Port Address Translation (PAT)
- Transparent Bridging (IEEE Standard)
 - Spanning Tree Bridging Protocol
 - Concurrent Routing and Bridging
- NTP (Network Time Protocol)
- Cisco Style Command Line Interface
- Standard Compliant Network Protocol
- AddPac Proprietary IP Sharing
- MAC Address Filtering
- DNS Proxy

AP900 Network Diagram



Ordering Information

- AP900-01 : AP900 Standard Configuration
- Two(2) Fast Ethernet Port(RJ45)
 - One(1) Console Port (RJ45)
 - RISC CPU + Voice DSP
 - 4MB Flash, 32MB SDRAM
 - APOS v8.xx Manual
- CAB-LAN Ethernet Cable
 - CAB-CON RS-232C Console Cable
 - VoIP Interface Option
 - AP900A : 4-Port FXS and 4-Port FXO
 - AP900B : 8-Port FXS
 - AP900C : 8-Port FXO