



# AP-IP90 IP Phone

High Performance IP Phone Solution

## Preliminary Product Overview

(Without notice, following described technical spec. can be changed)



# **AddPac**

**AddPac Technology**

Sales and Marketing

[www.addpac.com](http://www.addpac.com)

# Contents

## AP-IP90 IP Phone

- Product Overview
- Hardware Specification
- Software Service
- Audio & Voice Service and Features
- Network Service and Features
- Application Area
- Ordering Information



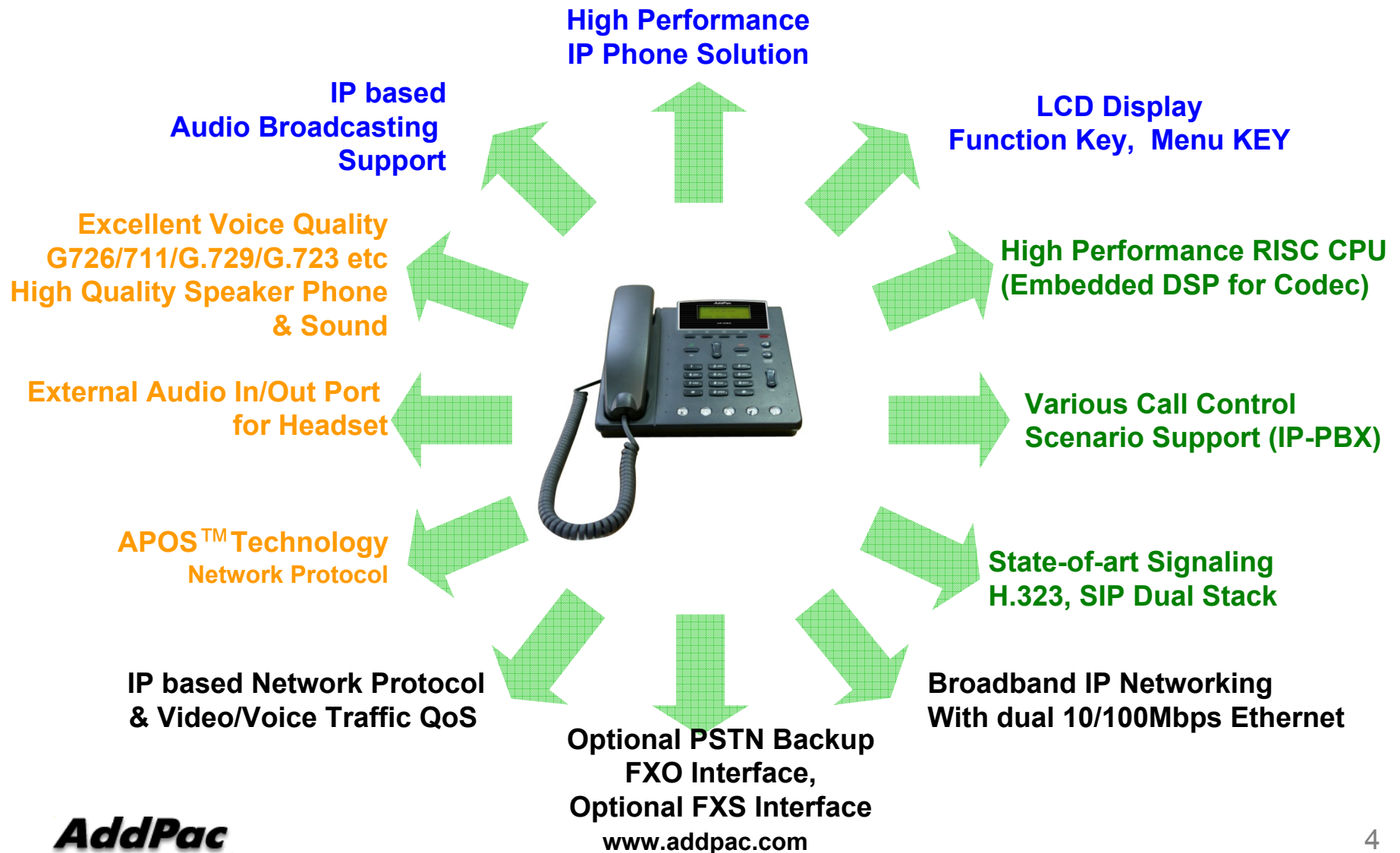
# Product Overview

AP-IP90 IP Phone

- IP Phone Solution
- Audio Broadcasting Solution
- High-performance Audio, and Voice Service
- Firmware Upgradeable Architecture
- VoIP Solution with Outstanding Network Service Capability
- Audio Privacy Protection

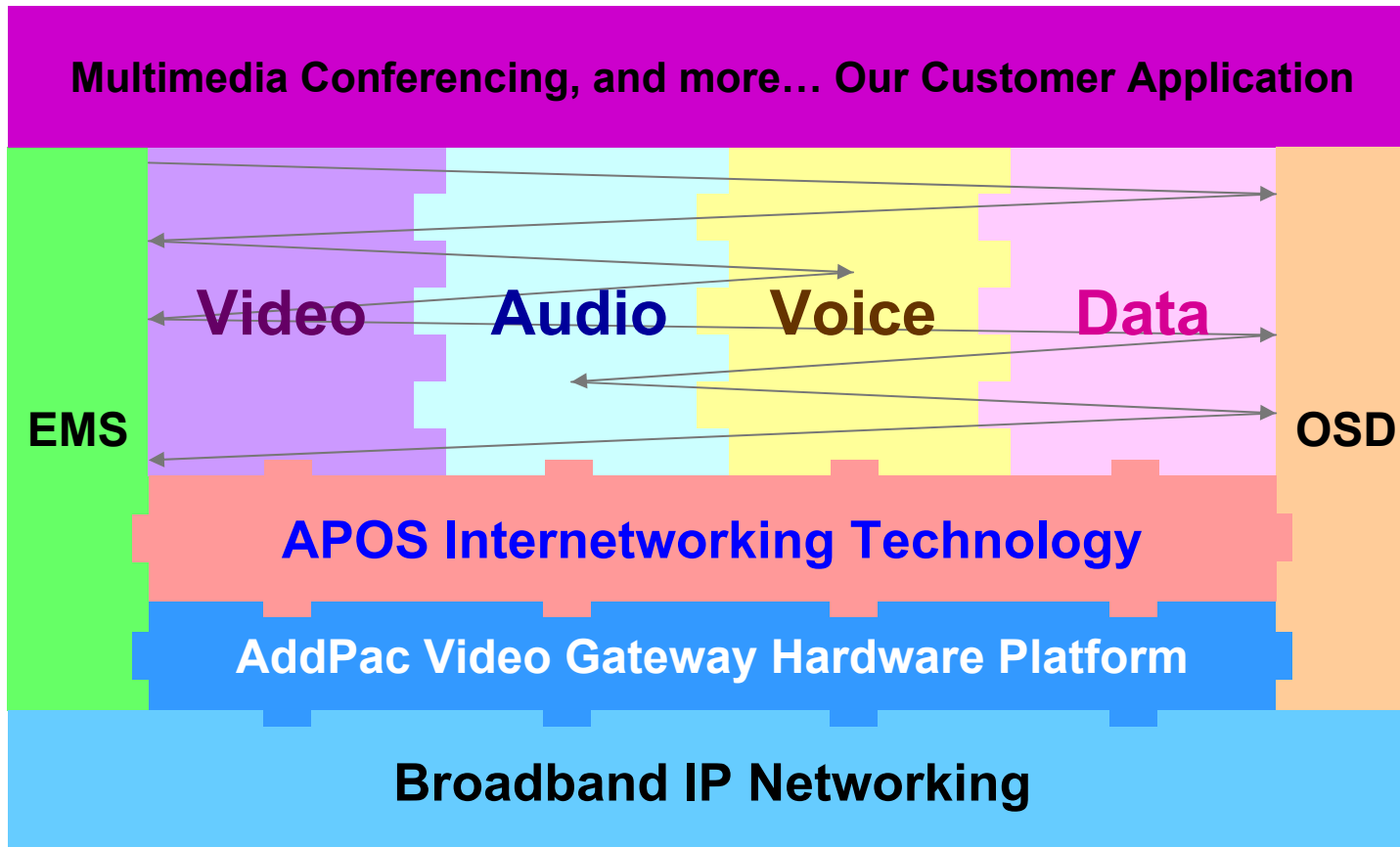
# Product Highlights

AP-IP90 IP Phone



# Multimedia Service

AP-IP90 IP Phone



- APOS : AddPac Internetworking Operating System
- OSD : On- Screen Display
- EMS : Element Management System

# Hardware Specification

AP-IP90 IP Phone

- **RISC+DSP Microprocessor Computing Power (Dual Processor Architecture)**
- **Optional PSTN Backup (FXO) Interface : AP-IP90E**
- **High quality Audio and Voice Interface**
  - Stereo Audio Input Connector
  - Stereo Audio Output Connector
- **Network Interface**
  - Two(2) 10/100Mbps Fast Ethernet
- **Graphic LCD Window**
- **Power Supply**
  - External Power Adaptor (5V, 2A)

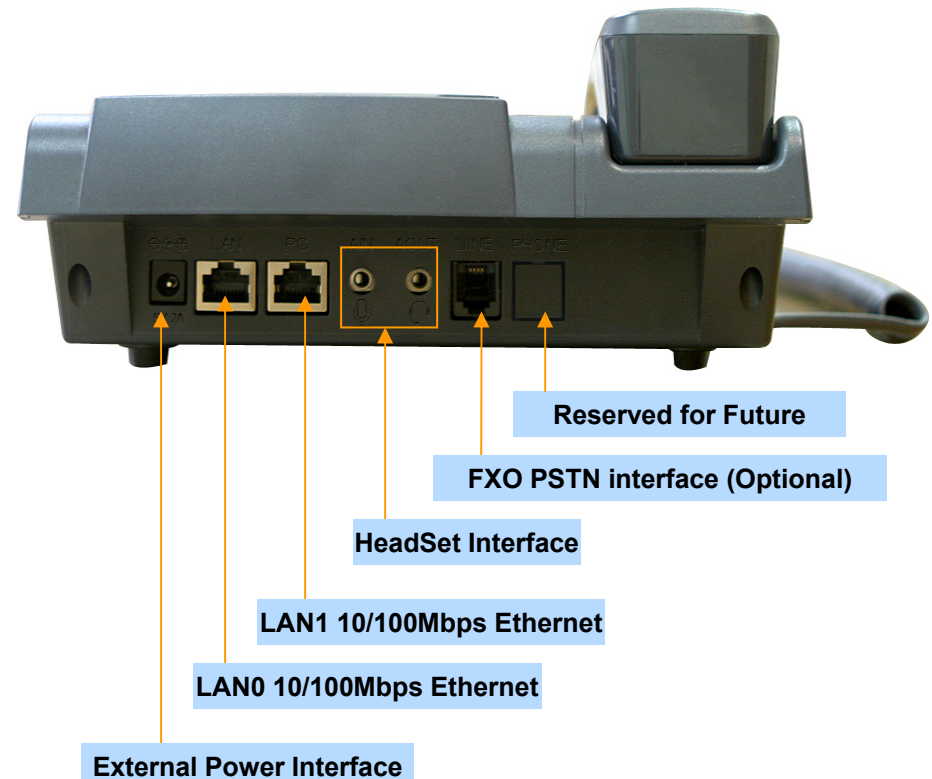
# Hardware Specification

## AP-IP90 IP Phone

### Hardware Specifications

AP-IP100 IP Phone	Basic Specifications
<b>CPU</b>	RISC Microprocessor
<b>Ethernet Interface</b>	2-Ports 10/100Mbps Ethernet Interface(RJ-45)
<b>PSTN Port (Optional)</b>	1-Port FXO PSTN Port(RJ-11)
<b>Flash Memory</b>	4Mbyte High-speed Flash Memory
<b>Base Memory</b>	16Mbyte High-speed SDRAM
<b>Power Requirement</b>	External Power Supply Adaptor / VAC 110~220V, 50/60Hz, 10Watt
<b>Operating Temperature</b>	0°C ~ 45°C (32 °F ~ 122°F)
<b>Storage Temperature</b>	-40°C ~ 85°C (-40°C ~ 185°F)
<b>Relative Humidity</b>	5% ~ 95% (Non-condensing)
<b>Dimensions</b>	W x D x H (200mm x 210mm x 60mm)
<b>Weight (g)</b>	1Kg

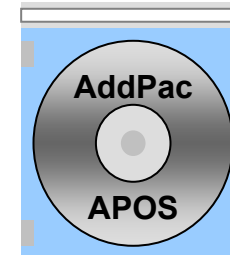
### Network interface Configurations



# Software Service

AP-IP90 IP Phone

- **Built-in AddPac APOS Internetworking Software**
  - Scalability, Functionality, and Stability Features
  - Audio Traffic QoS Control
- **Programmable Video, Audio, and Voice Services**
  - Audio, and Voice Codec
- **Firmware Upgradeable Architecture**
- **Industry Standard IP based Network Protocol Features**





# Audio & Voice Service and Features

AP-IP90 IP Phone

- **Audio & Voice Networking Interface**
  - Audio Input/Output Port (2 x 3.5mm Stereo Female Connector)
- **VoIP based Signaling Protocol Support**
  - H.323, SIP Multiple Signaling Protocol Stack
  - H.323 Gateway, Gatekeeper Support
- **High-performance Audio & Voice Codec Support**
  - Line IN/OUT : G.726, G.711 Audio Codec, etc
- **Enhanced QoS Management Features for Voice Traffics**

# Network Service and Features

## AP-IP90 IP Phone

- **Network Managements**
  - Standard SNMP Agent (MIB v2) Support
  - Remote Management using Console, Telnet
  - Web based Management using HTTP Server Interface
- **Security Functions**
  - Standard & Extended IP Access List
  - Enable/Disable for Specific Network Protocols
  - Multi-level User Account Management
  - Auto-disconnect for Telnet/Console Sessions
  - PPP User Authentication Supports (PAP & CHAP)
- **Operation & Managements**
  - System Performance Analysis for Process, CPU, Connection Interface
  - Debugging, System Auditing, and Diagnostics Support
  - System Booting and Auto-rebooting with Watchdog Feature
  - System Managements with Data Logging
  - IP Traffic Statistics with Accounting

# Network Service and Features

AP-IP90 IP Phone

- **Network Managements**
  - DHCP Server & Relay Functions
  - Network Address Translation (NAT) Function
  - Port Address Translation (PAT) Function
  - Transparent Bridging (IEEE Standard) Function
    - Spanning Tree Bridging Protocol Support
    - Remote Bridging Support
    - Concurrent Routing and Bridging Support
  - Cisco Style Command Line Interface (CLI)
  - Network time Protocol (NTP) Support

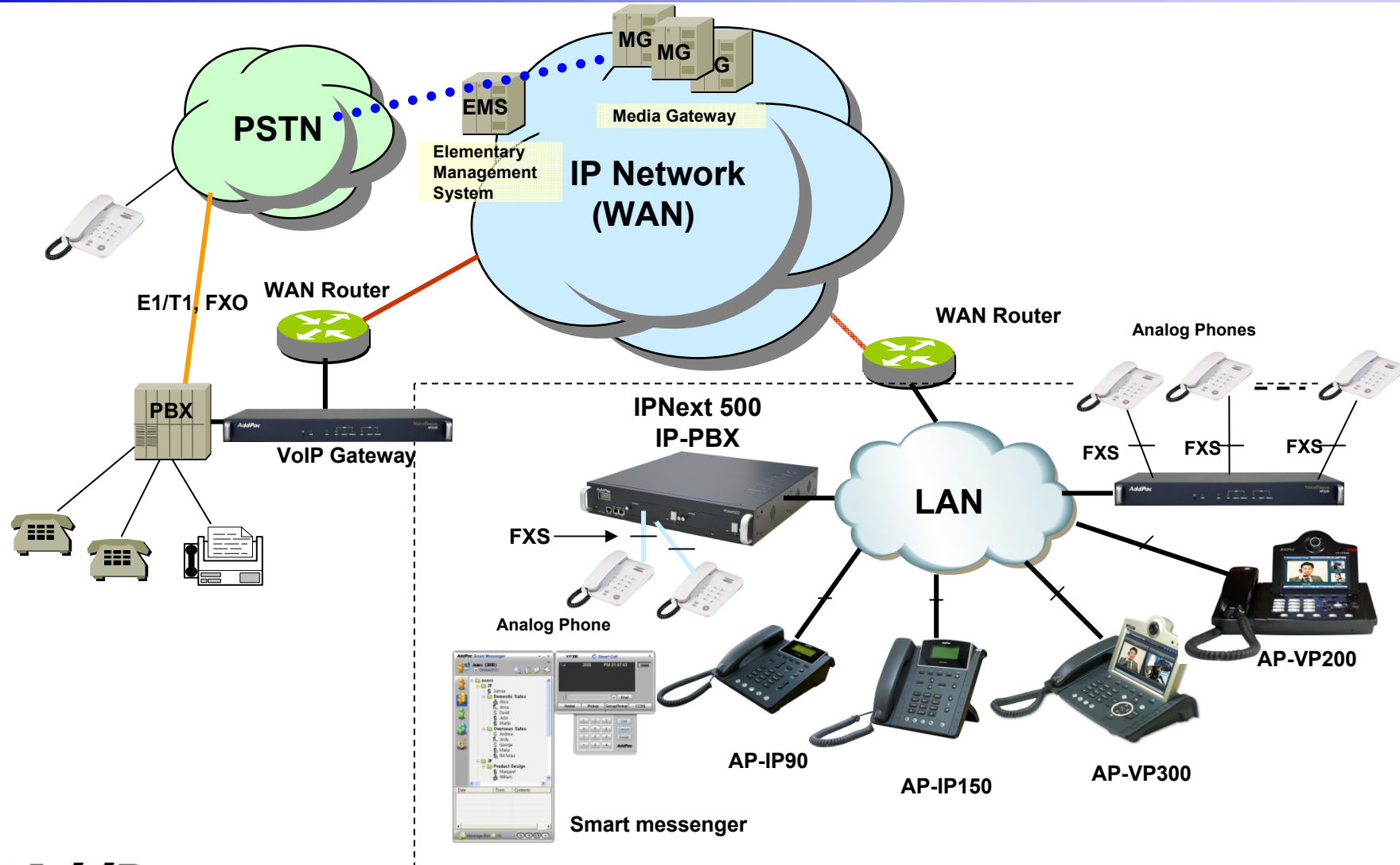
# AP-IP100 IP Phone

## Application Area

- IP-PBX IP Phone Terminal (SIP, H.323, etc)
- IP Phone + FXO VoIP Gateway : AP-IP90E
- Audio/Video Real-time Broadcasting
- Audio Conference

# Standard IP-PBX Application

AP-IP90 IP Phone

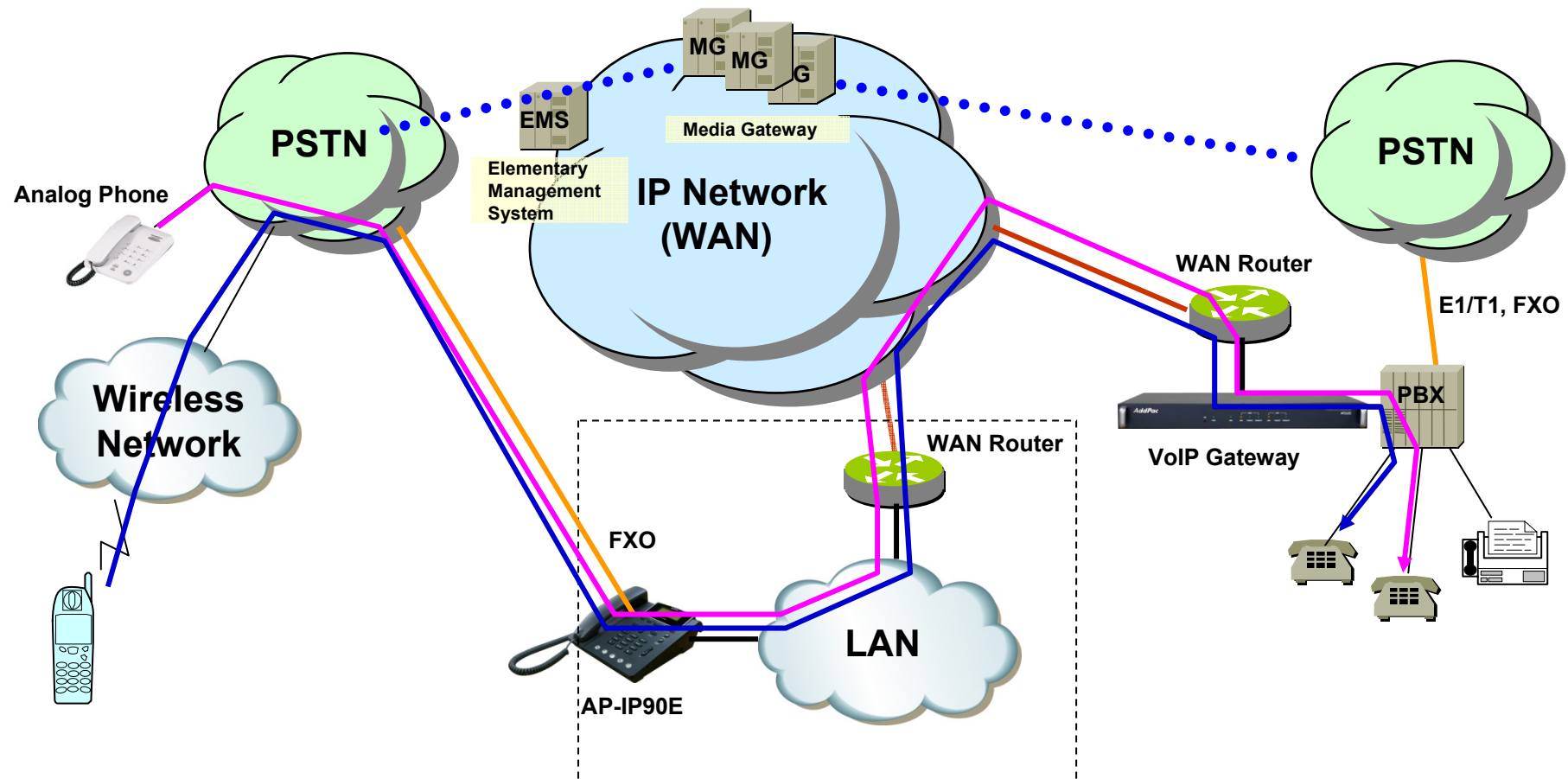


**AddPac**

[www.addpac.com](http://www.addpac.com)

# IP Phone + FXO Gateway Application

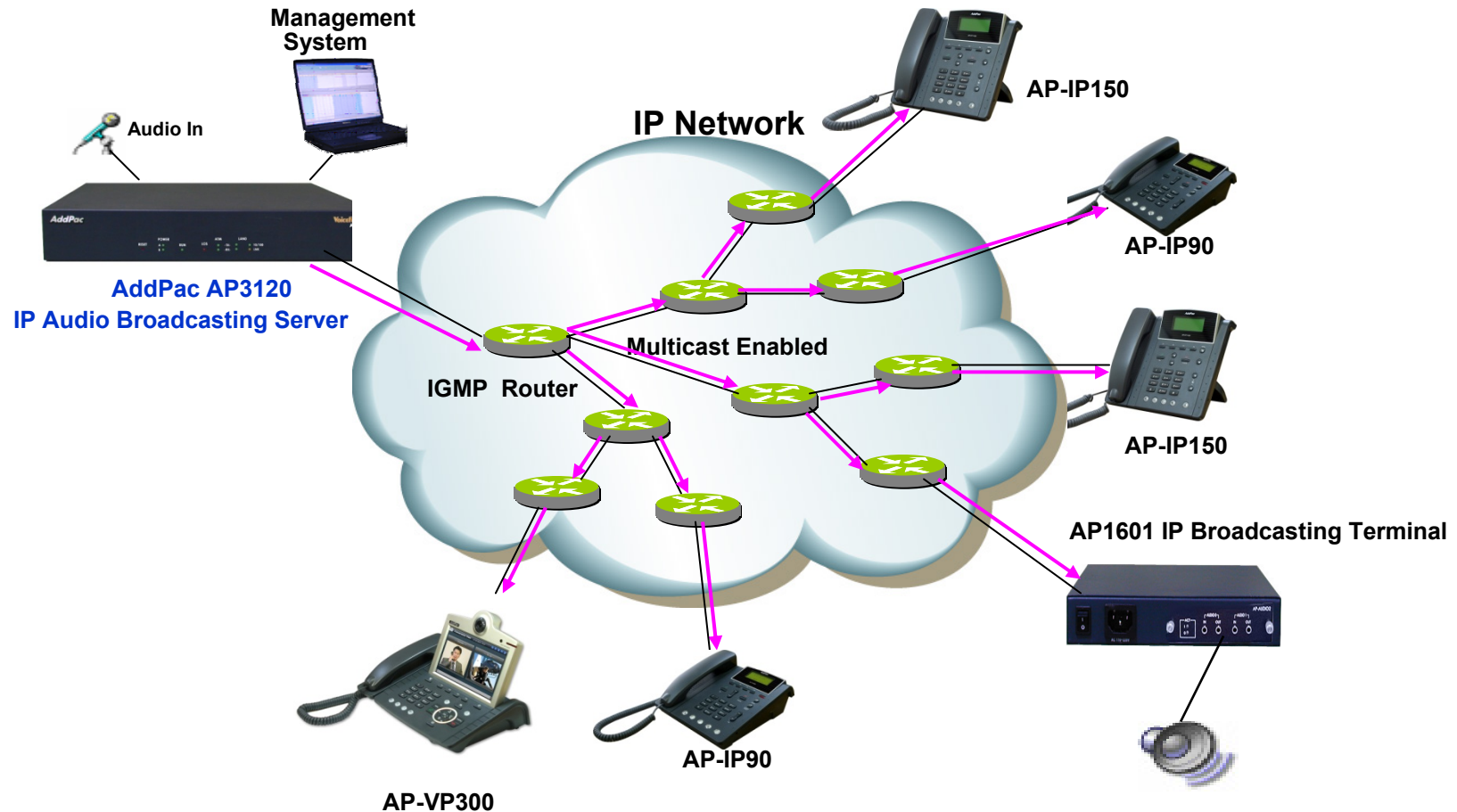
AP-IP90 IP Phone



# Audio Real-time Broadcasting

AP-IP90 IP Phone

IP based Audio Broadcasting Service via  
Multicasting IP Network  
(Video, Audio/Voice, and more...)

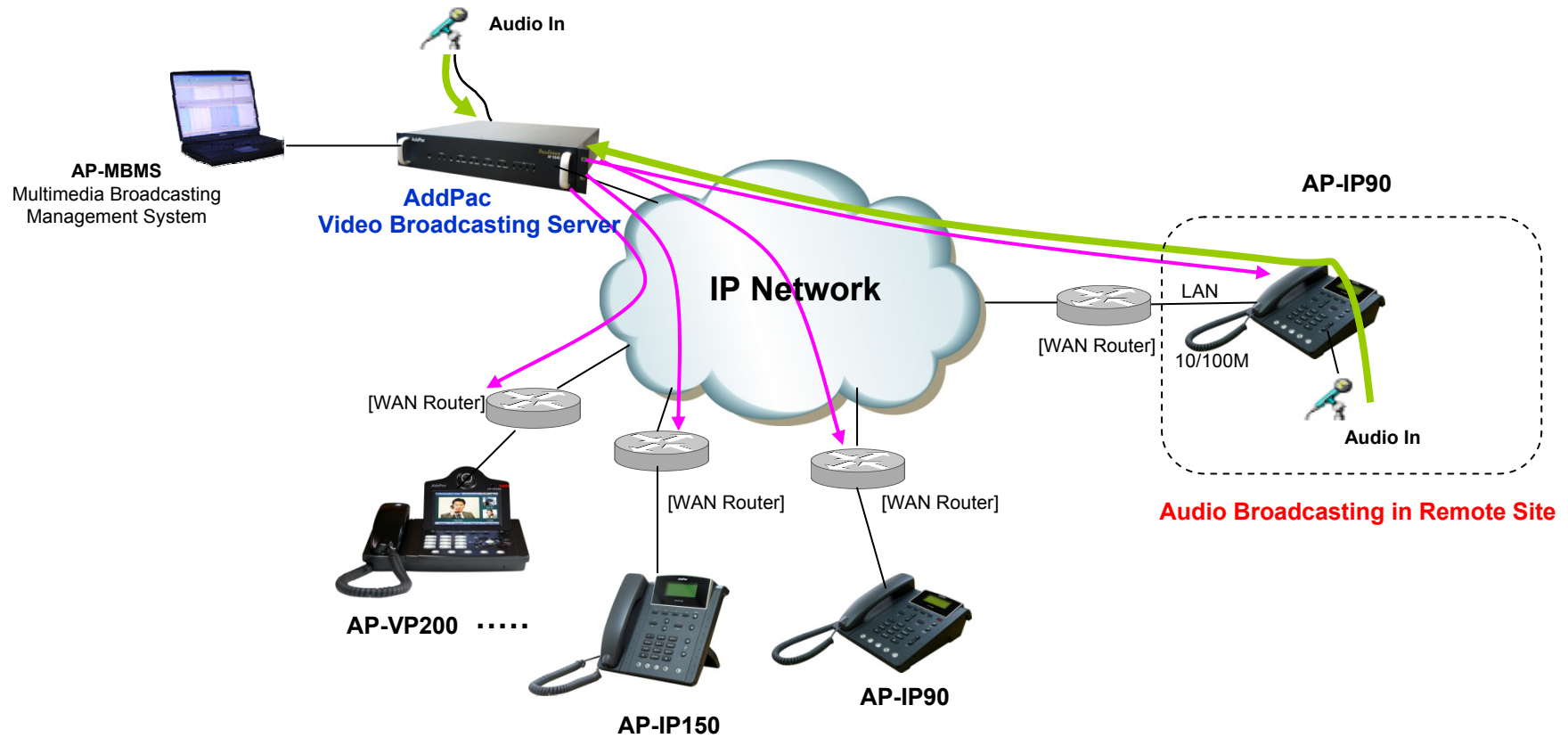


# Audio Real-time Broadcasting

AP-IP90 IP Phone

## Remote Site Audio and Video Broadcasting Service (Video, Audio/Voice, and more...)

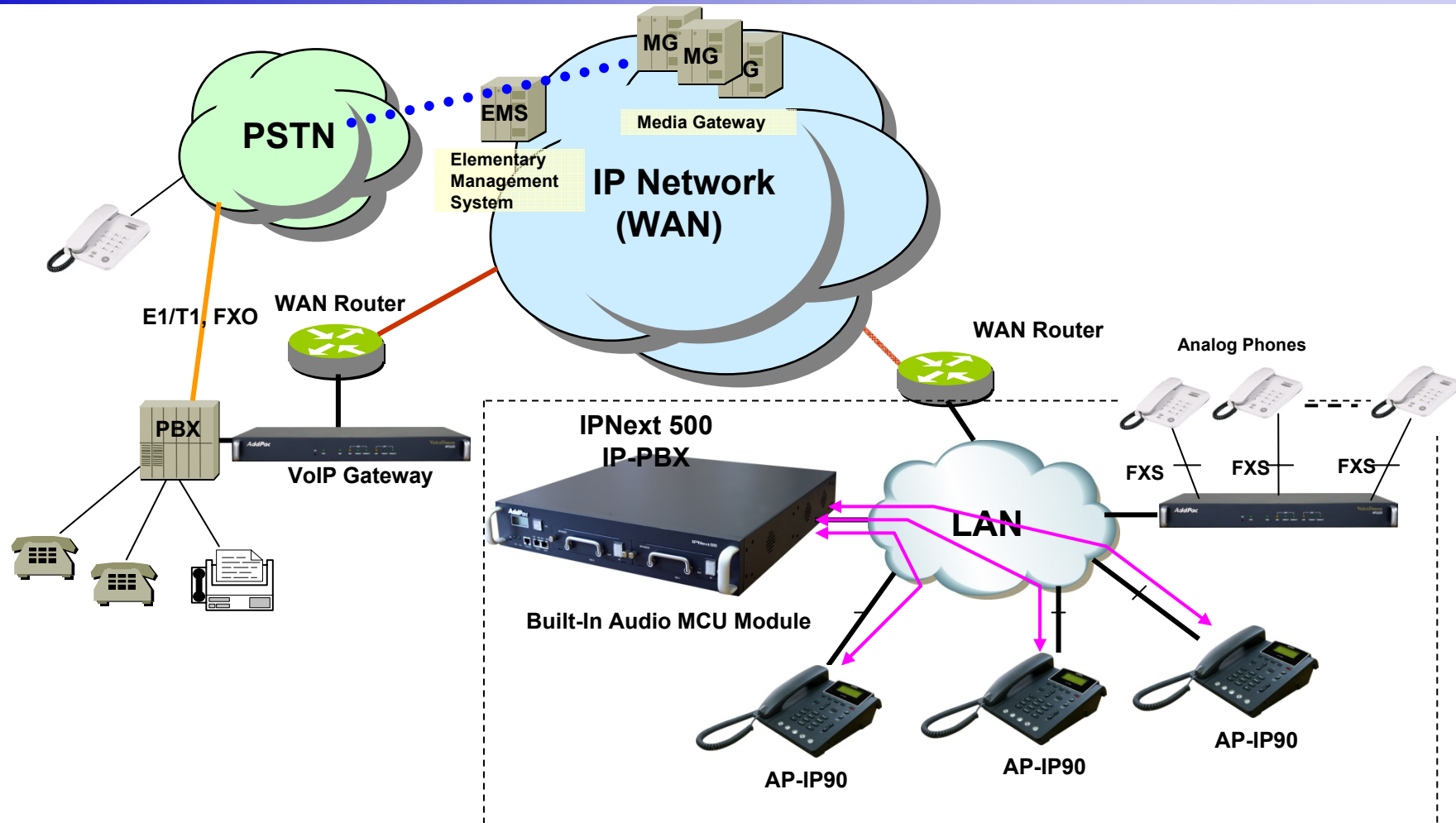
Audio Broadcasting in HQ or Center





# Audio Conferencing (IPNext Built-In Audio MCU)

AP-IP90 IP Phone



# Ordering Information

- **AP-IP90 IP Phone Hardware**
  - AP-IP90 IP Phone Main Body
  - RISC Microprocessor with Embedded DSP Architecture
  - LCD, Function KEY, Menu KEY
  - External 3.5mm Audio Input/Output
  - 2-ports 10/100Mbps Fast Ethernet
  - Optional FXO Interface Port for PSTN Interface
  - Including Network Cable Set & Ext. Power Supply, etc.
- **Built-in APOS Internetworking Software for AP-IP90**
- **Including 1 Year Hardware Warranty**
- **Product Documents**
  - Install and Operation Guide (PDF)
- **Pricing**
  - AddPac Technology Regional Sales Manager
  - Authorized Sales and Marketing Representatives
  - Please Contact [www.addpac.com](http://www.addpac.com)



# Thank you!

**AddPac Technology Co., Ltd.**  
Sales and Marketing

Phone +82.2.568.3848 (KOREA)

FAX +82.2.568.3847 (KOREA)

E-mail [sales@addpac.com](mailto:sales@addpac.com)