



AP-GS1004™

4-Port GSM Gateway

High-performance GSM Gateway Solution

New Models for VoIP
Interface Extension



AddPac

AddPac Technology

2011, Sales and Marketing

www.addpac.com

Contents

- AP-GS1004 Product Overview
- AP-GS1004 Model B,C H/W Specification
- AP-GS1004 Model B,C Network Diagram



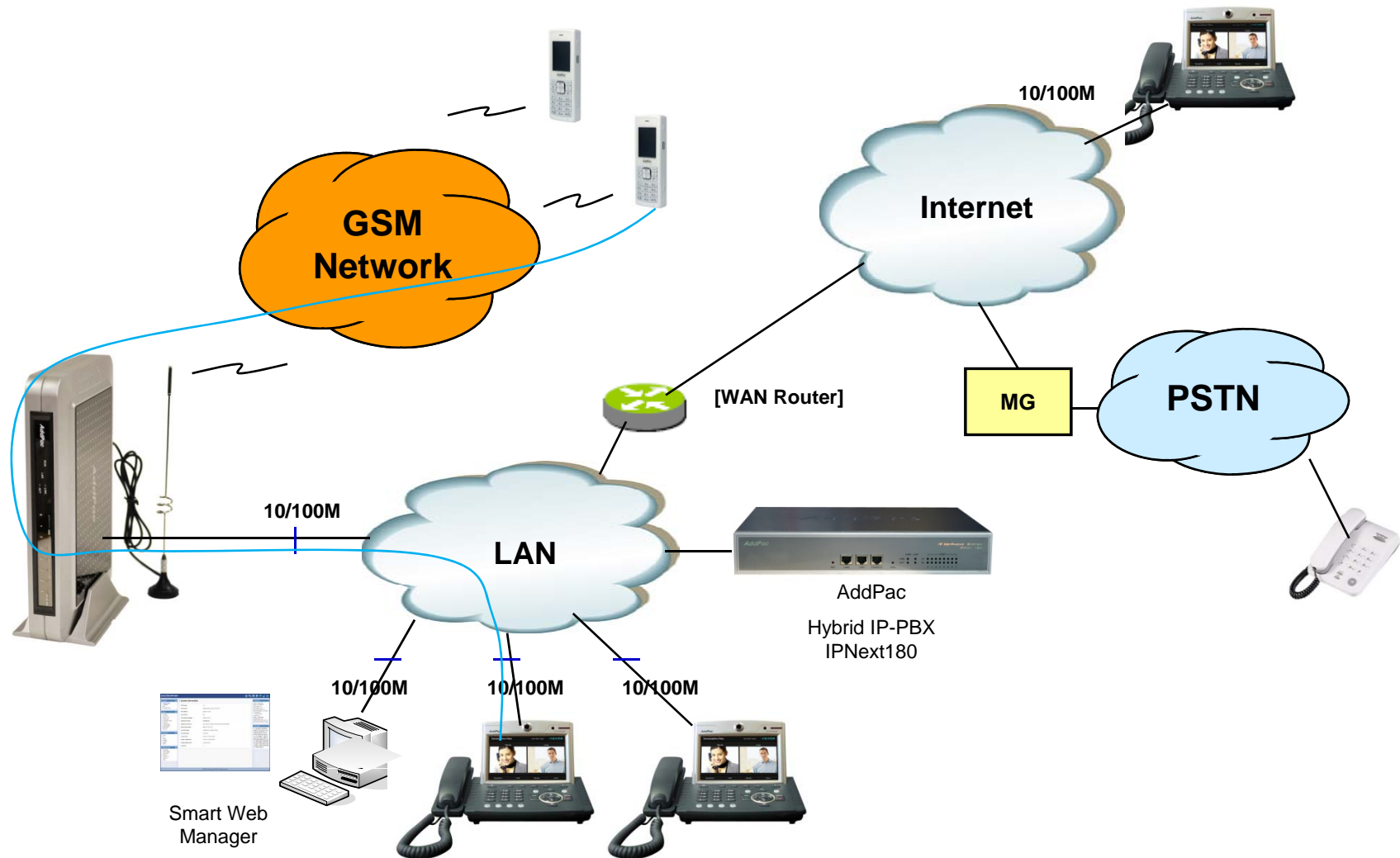
Product Overview

- 4-Port GSM Interface (Antenna, Slots for SIM card)
- PSTN Interface/VoIP Interface(LAN) Both Support
- FXS, FXO Analog Interface Support
- H.323/SIP/MGCP Triple Concurrent Stack Embedded
- High Performance RISC & Programmable DSP Architecture
- One(1) 10/100Mbps Fast Ethernet
- G.711/G.726/G.723/G.729, T.38 Fax , VAD, etc
- Powerful Network Protocols (PPPoE, DHCP, Static Routing, etc)
- Firmware Upgradeable Architecture
- VPMS (VoIP Plug&Play Management System) for Large Scale Deployment
- Advanced Voice QoS Mechanism
- Light and Compact Design with External Power Supply

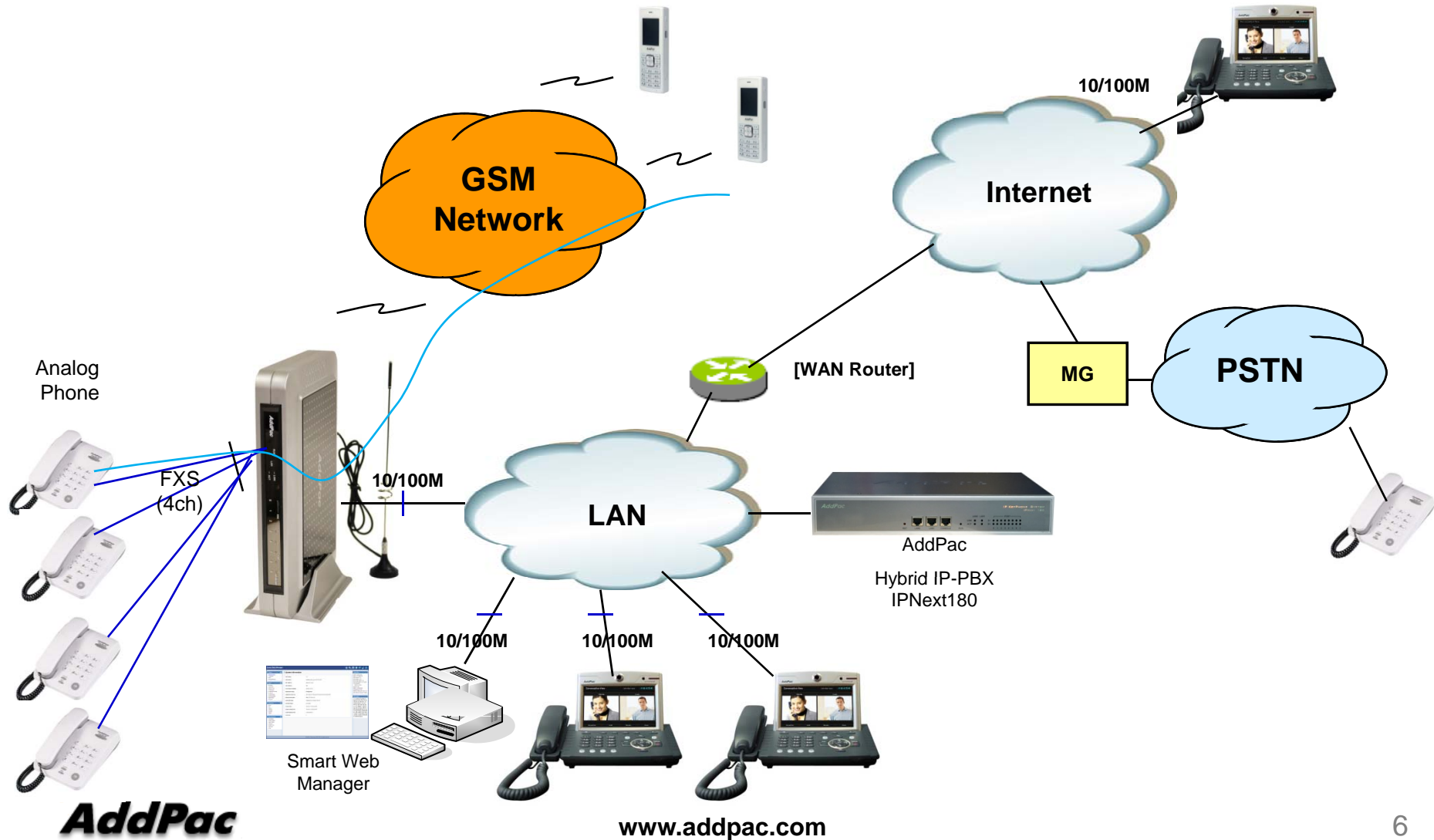
AP-GS1004 New Model

- AP-GS1004 Embedded Platform
- Voice Interface
 - No Analog Interface (Model A)
 - FXS 4ch Model (Model B)
 - FXO 4ch Model (**Model C**) : New Model
- RISC Microprocessor Computing Power
- Audio Codec
 - G.711, G.726, G.729, G.723.1
- Main Chassis
 - One(1) RS-232C Console (RJ45) for CLI
 - 4-Port SIM Card Slots
 - One(1) GSM Antenna Interface (Internal 4-channel Antenna Combiner)
 - One(1) Fast Ethernet Port
 - External Power Adaptor

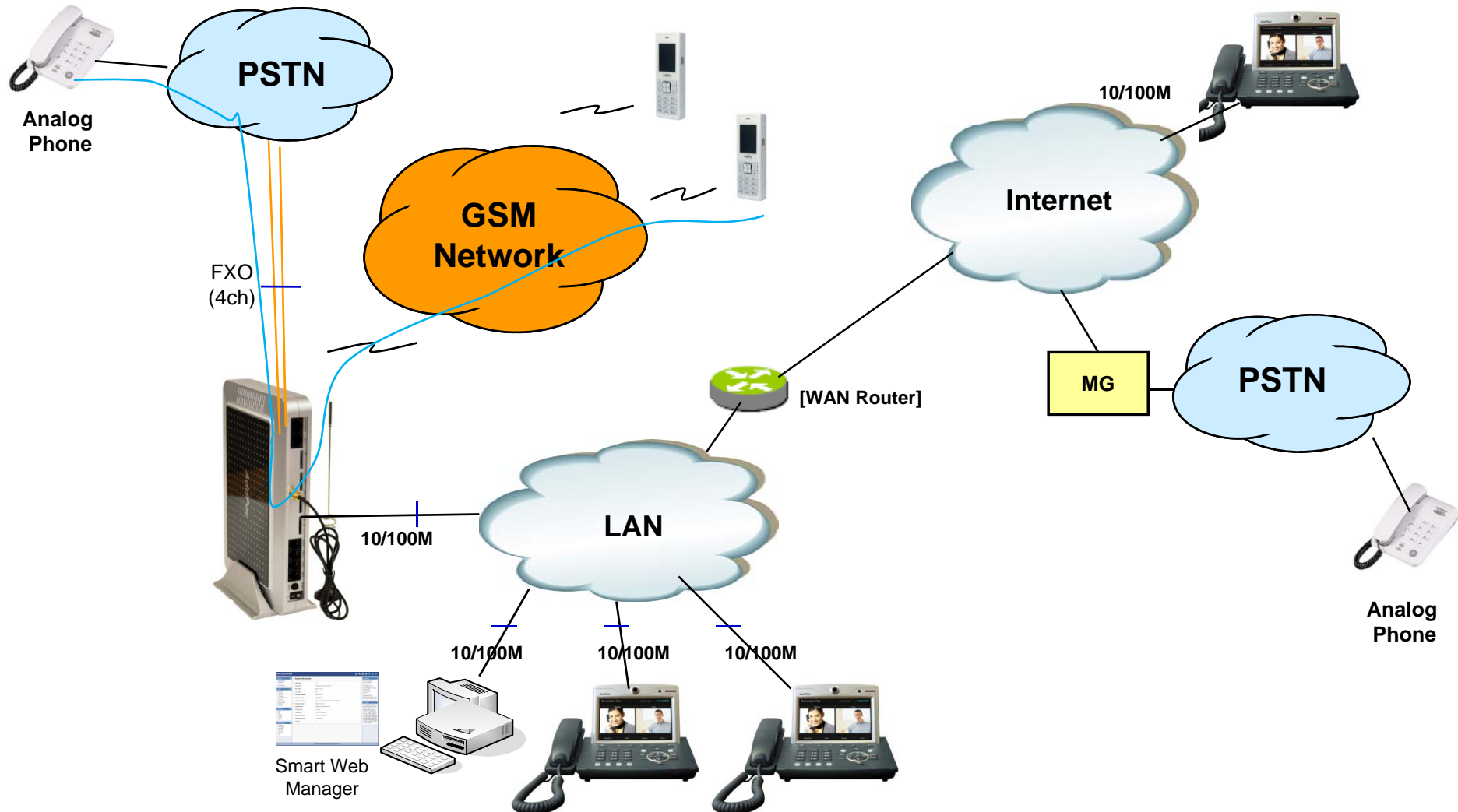
AP-GS1004(Model A) Network Diagram



AP-GS1004(Model B) Network Diagram



AP-GS1004(Model C) Network Diagram





Thank you!

AddPac Technology Co., Ltd.
Sales and Marketing

Phone +82.2.568.3848 (KOREA)

FAX +82.2.568.3847 (KOREA)

E-mail sales@addpac.com