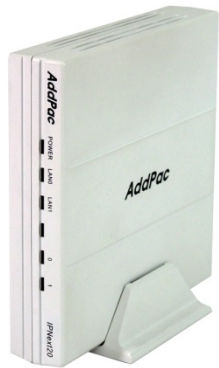


Smart Messenger

AP-VP280™

BcN IP Video Phone

High Performance Broadband Convergence Network
IP Video Phone Solution



IPNext20



AP-VP280

User Presence Features

AddPac

AddPac Technology

2010, Sales and Marketing

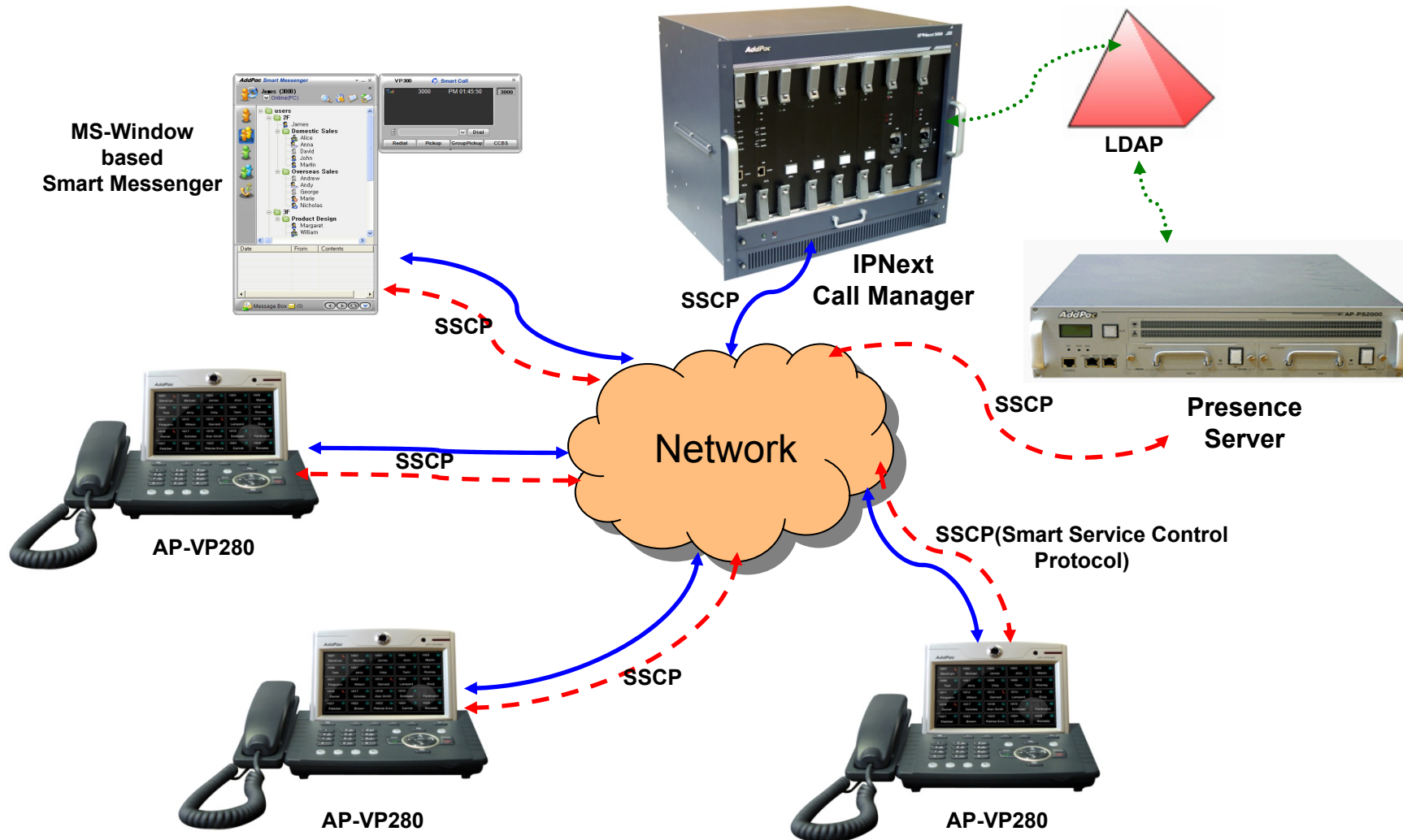
Contents

- Overview
- IP Telephony Network Diagram for User Presence Service
- AP-VP280 User Presence Feature
- AP-VP280 User Presence UI
 - Presence Server Input
 - Presence Service Enable
 - Presence Server Login Success
 - Speed Button Profile Select
 - Speed Button Profile Update Notification
 - Speed Button Map View
 - Indicate User Presence Information on Touch Screen LCD
 - Speed Button List View
 - Speed Button Modify

Overview

- Used to support User Presence Service and Speed Dial
- Inter-operate Presence Server and Call Manager
 - Support User Presence Information
 - Support two or more Speed Button Profile List
- Support Speed Button Interface
 - Speed dialing service
 - Support User(Phone Number) Presence Information on LCD Screen
 - Editable global speed button profile, and Save in Phone

IP Telephony Network Diagram for User Presence Service



AddPac

www.addpac.com

AP-VP280 User Presence Feature

- **AP-VP280 Supports**
 - User Login and Logout Feature
 - Presence Server Setup
 - Maximum 5 Presence Server Setup
 - Enable/Disable Connection to Presence Server
 - Select Profile
 - Get Speed Button Profile (Global Profile) from Presence Server
 - Select Speed Button Profile in profile list received from Presence Server
 - With Speed Button Profile, user can edit as you want (change to Private Profile)

AP-VP280 User Presence Feature (cont.)

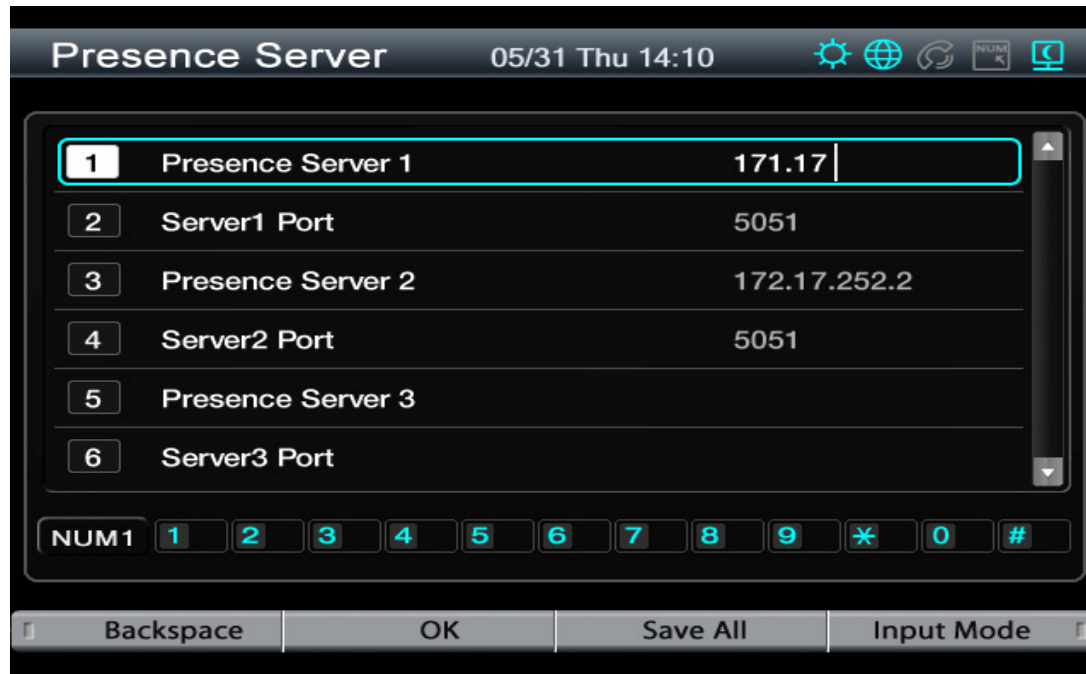
- Phone Book Feature
 - Speed Button view in Map type and List type
 - Speed Button Delete, Modify
 - Represent User Presence Information on OSD in real-time
 - AP-VP300 Phone Book itself Supports
 - Group Create, Modify, Delete
 - Contact Add, Delete, Modify
 - Search Contact by number, name, speed dial number

- Speed Button LED
 - Get User Presence Information in real-time
 - Connect Call using one Button (no need to press all dial digits)

AP-VP280 User Presence UI



Presence Server Input



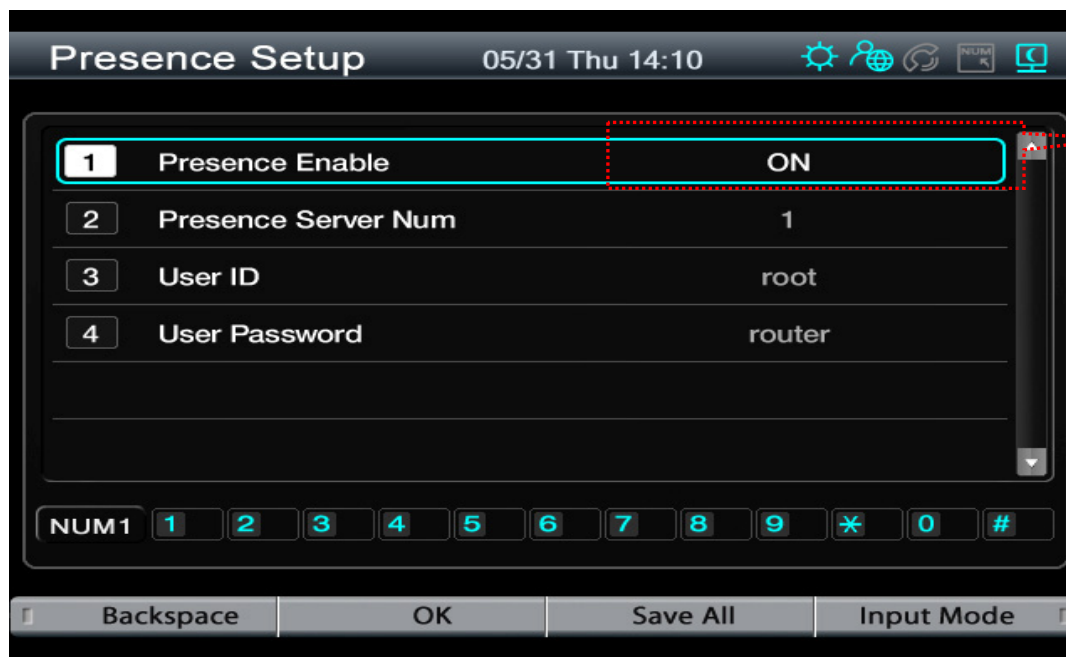
The screenshot shows a terminal window titled "Presence Server" with a timestamp of "05/31 Thu 14:10". The interface displays a list of six configuration items:

ID	Label	Value
1	Presence Server 1	171.17
2	Server1 Port	5051
3	Presence Server 2	172.17.252.2
4	Server2 Port	5051
5	Presence Server 3	
6	Server3 Port	

At the bottom, there is a numeric keypad labeled "NUM1" with buttons for digits 1-9, *, 0, and #. Below the keypad are four buttons: "Backspace", "OK", "Save All", and "Input Mode".

- Presence Server
 - Input Presence Server IP address and Port number to Connect, maximum 5 server info enable
 - Support IPv4, IPv6 address
 - Terminal try to connect to the first server, if it fails, terminal try to connect to next Presence Server

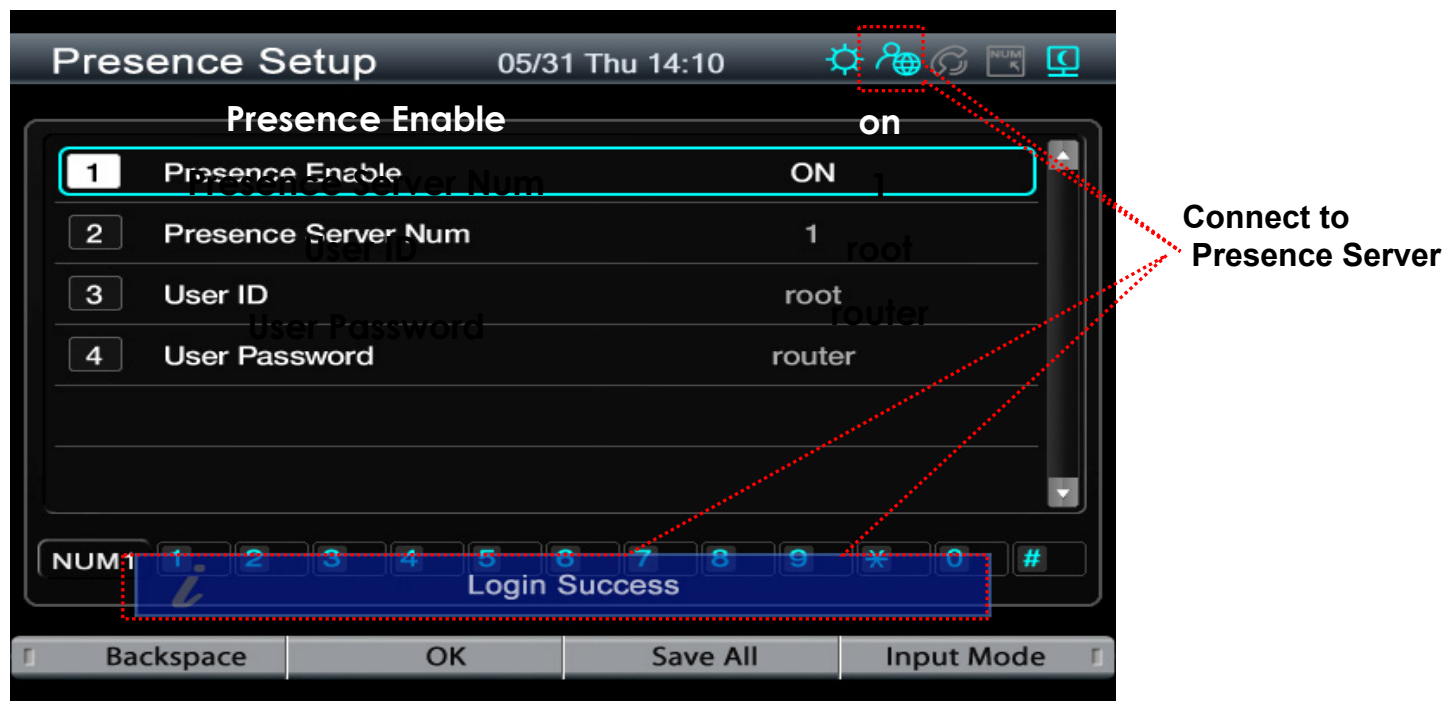
Presence Service Enable



Toggle using left/right arrow key

- Presence Setup
 - Presence Function enable/disable
 - Presence Server Num : the number of Presence Server in Presence Server List (This Can't be editable by user)
 - User Id, Password for Presence Server Login

Presence Server Login Success



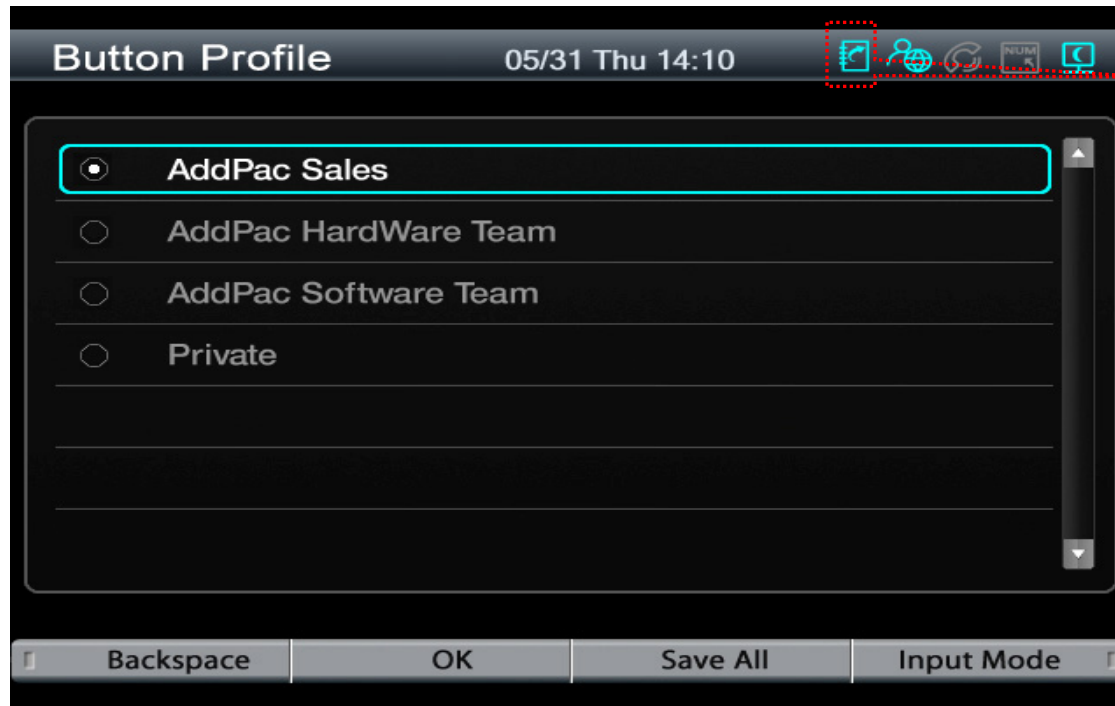
- After input Login Information, Press OK
 - Login result popup on the bottom
 - Icon Change on right side of the top
 - If Login is success ,“Login Success” Message will appear on the bottom of the screen

Speed Button Profile Select




- After connect to Presence Server, Terminal get Speed Button Profile List from Presence Server
 - User can Get Speed Button Profile which you select in list
 - If user don't want to get Speed Button Profile, select 'Private'. User can register or modify Speed Button Profile as user want.

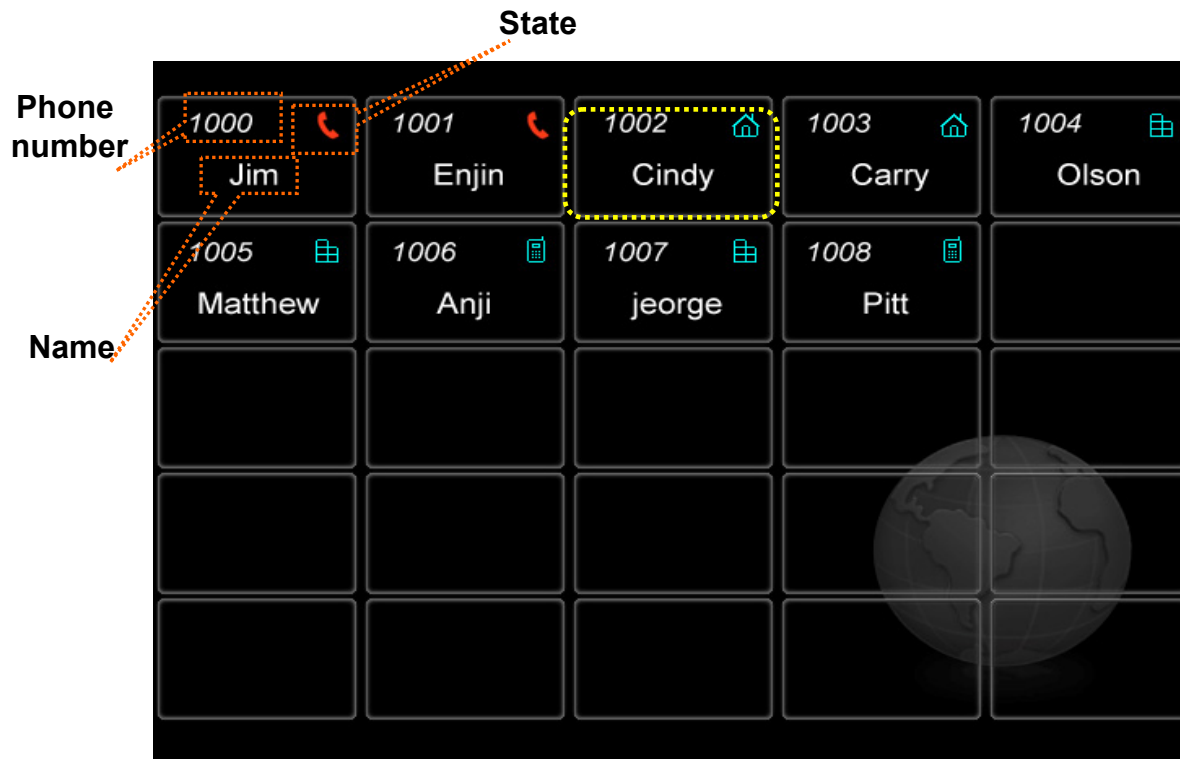
Speed Button Profile Update Notification



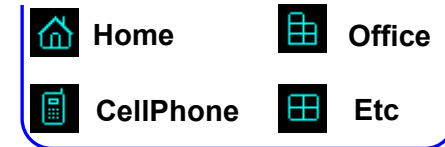
Speed Button Profile Update Notify

- When Speed Button Profile Update Notify comes
 - Icon Change to
 - After select Speed Button Profile, user get Updated Speed Button Profile from Presence Server and Icon Change back to 

Speed Button Map View



Idle Status Icons



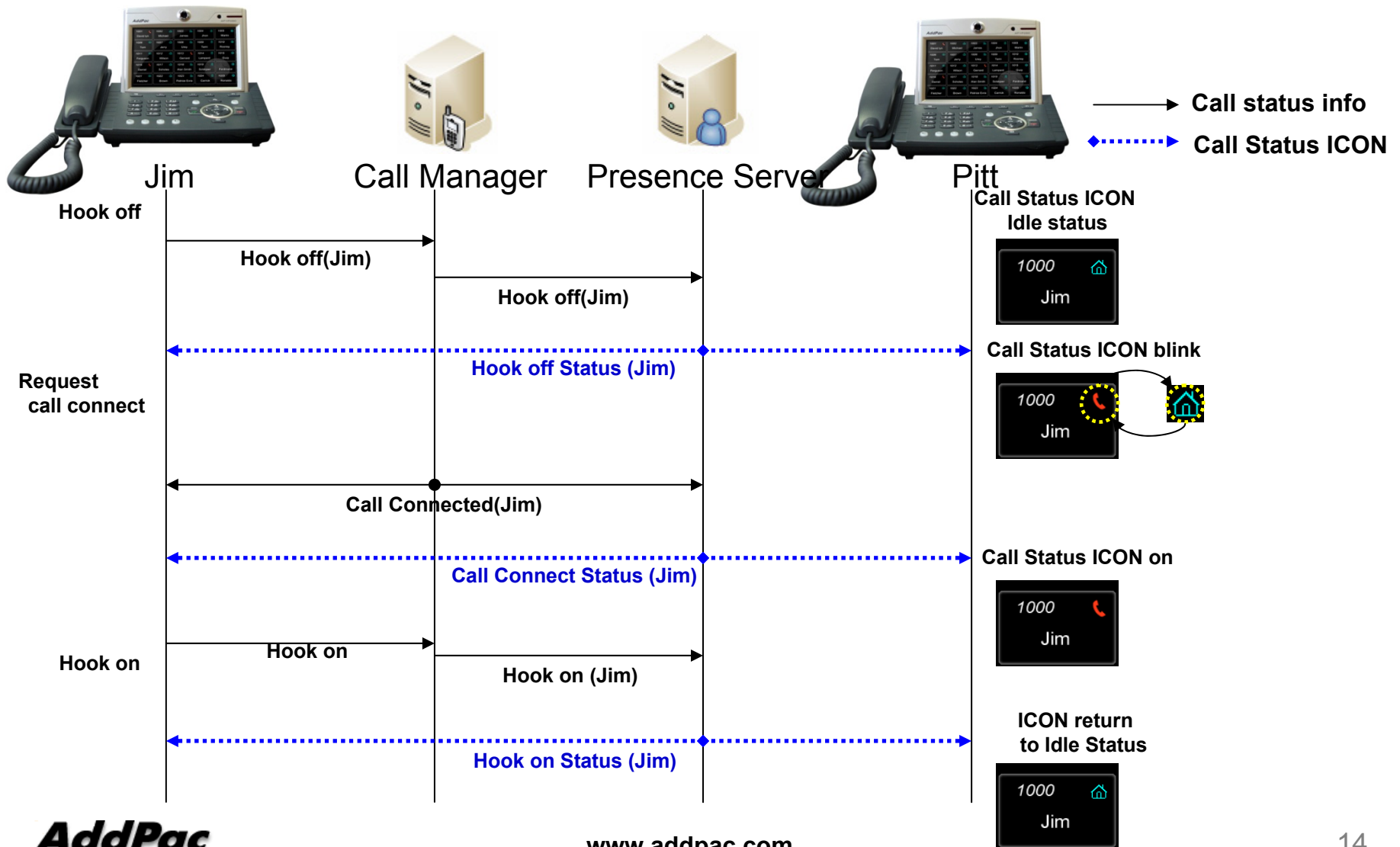
Call Status Icon



- Icon on
: hook off, calling status
- Icon Blink
: ringing status

- Show Button Profile in Map Type. The layout is same as Speed Button Keys on the KeyPad
- Icon means
 - In Idle Status : place of phone number
 - In Call Status : Call Status ICON turn on or blink. Each means difference status.

Indicate User Presence Information on Call Status ICON



Speed Button List View



- Show Button Profile in List Type.
 - If you want to call to Cindy, move to number 3(Cindy), press *OK* or *Send key*
 - Enable delete or modify speed button (Button Profile will change to 'Private')
 - Icon represents the place of a phone number

Speed Button Modify

The screenshot shows a 'Modify Button' interface with a dark theme. At the top, it displays the title 'Modify Button', the date and time '05/31 Thu 14:10', and several status icons. The main content is a list of buttons, each with a small square icon containing a number (1, 2, 3) and a text field. The first button (1) has 'Name' as the label and 'Jim' as the value. The second button (2) has 'Number' as the label and '2000' as the value. The third button (3) has 'Type' as the label and 'Home' as the value, with left and right arrow icons on either side. Below the list is a numeric keypad with buttons for 'NUM1', '1', '2', '3', '4', '5', '6', '7', '8', '9', '*', '0', and '#'. At the bottom, there are four buttons: 'Backspace', 'OK', 'Save All', and 'Input Mode'.

Button ID	Label	Value
1	Name	Jim
2	Number	2000
3	Type	Home

- Modified Button Information Save in Local.
- After change Phone Number, user can get presence information for new number.



Thank you!

AddPac Technology Co., Ltd.
Sales and Marketing

Phone +82.2.568.3848 (KOREA)

FAX +82.2.568.3847 (KOREA)

E-mail sales@addpac.com