



Smart Messenger

# AP-IP160™ BcN IP Phone

High Performance Broadband Convergence Network  
IP Phone Solution

SOHO IP-PBX Application



AP-IP160 IP Phone



IPNext50 IP-PBX for SOHO

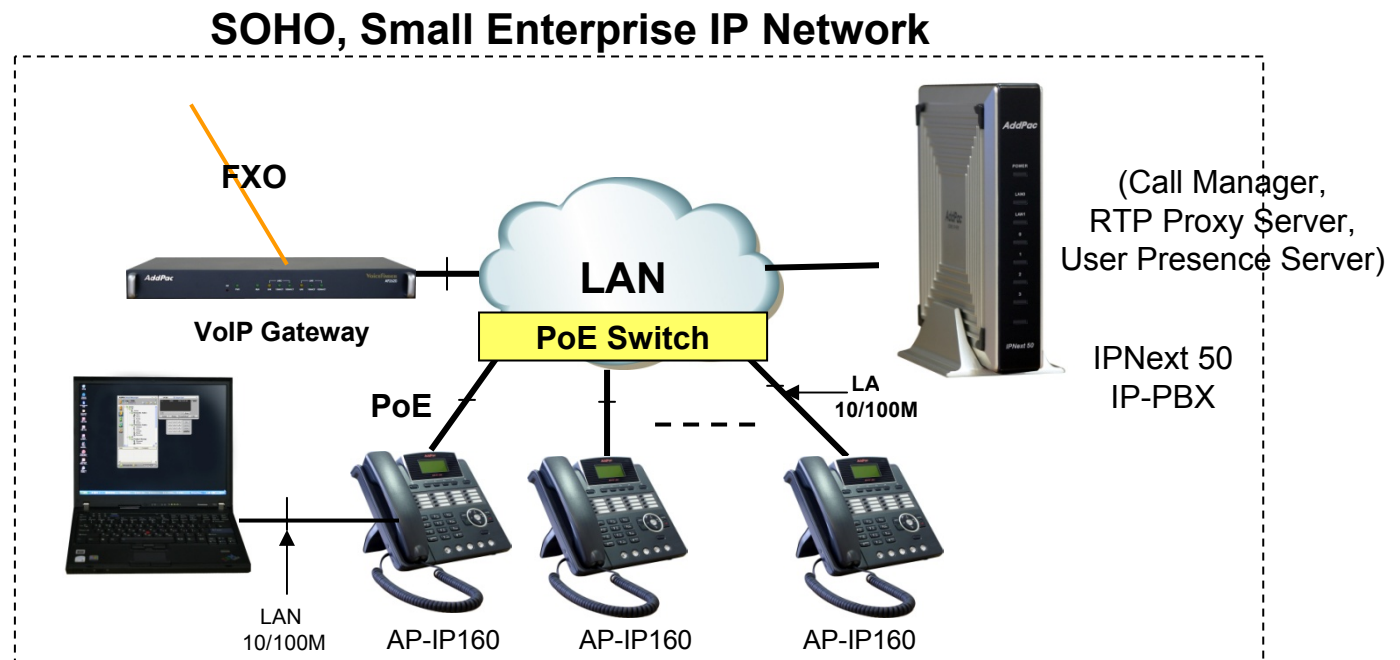
## **AddPac**

**AddPac Technology**

2010, Sales and Marketing

# Contents

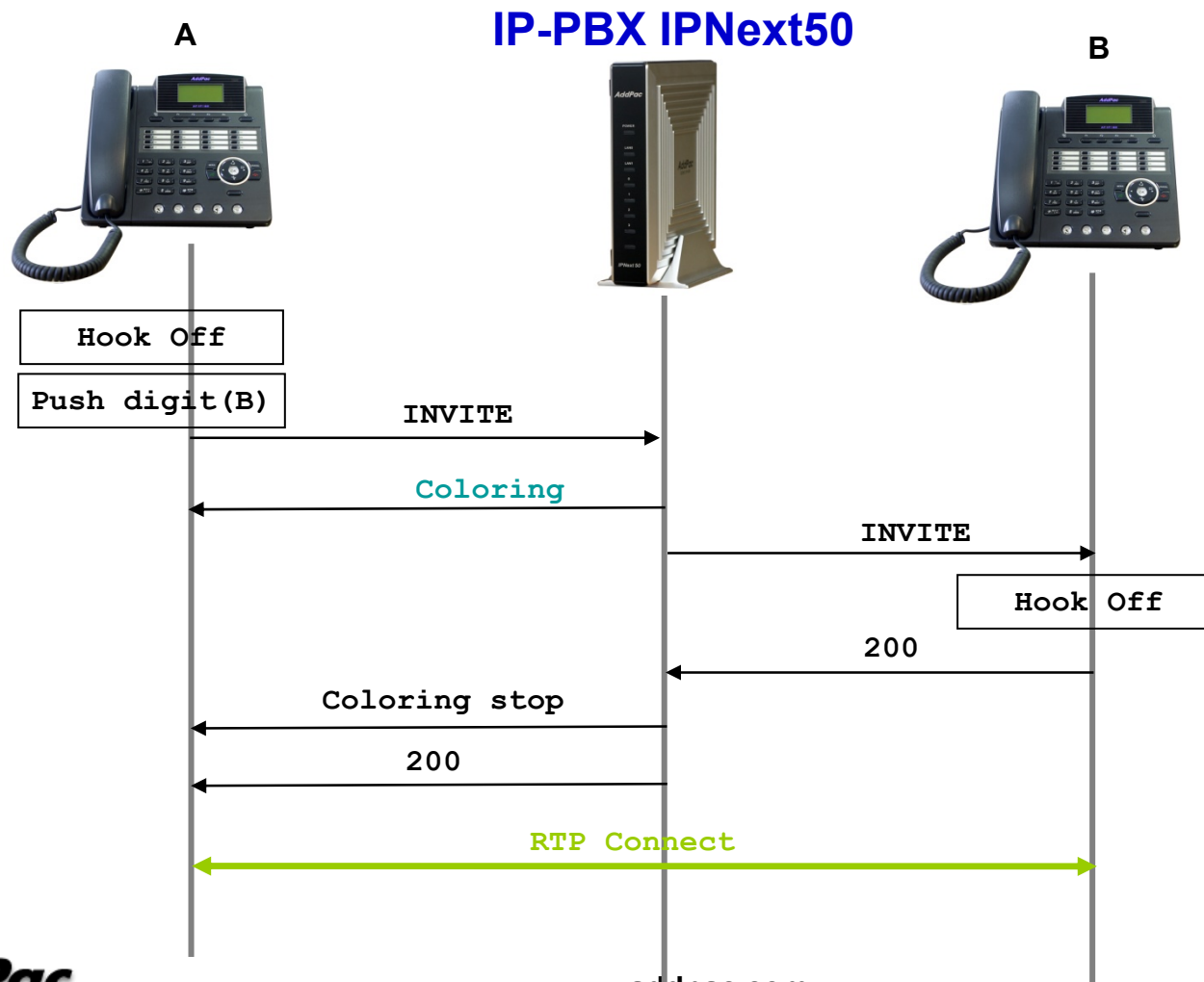
- IPNext50 Triple IP-PBX “All-in-One” Service for SOHO
  - Call Managing Server
  - RTP Proxy Server for Private IP Address
  - Presence Server



# IPNext50 “All-in-One” Service

Call Managing Server

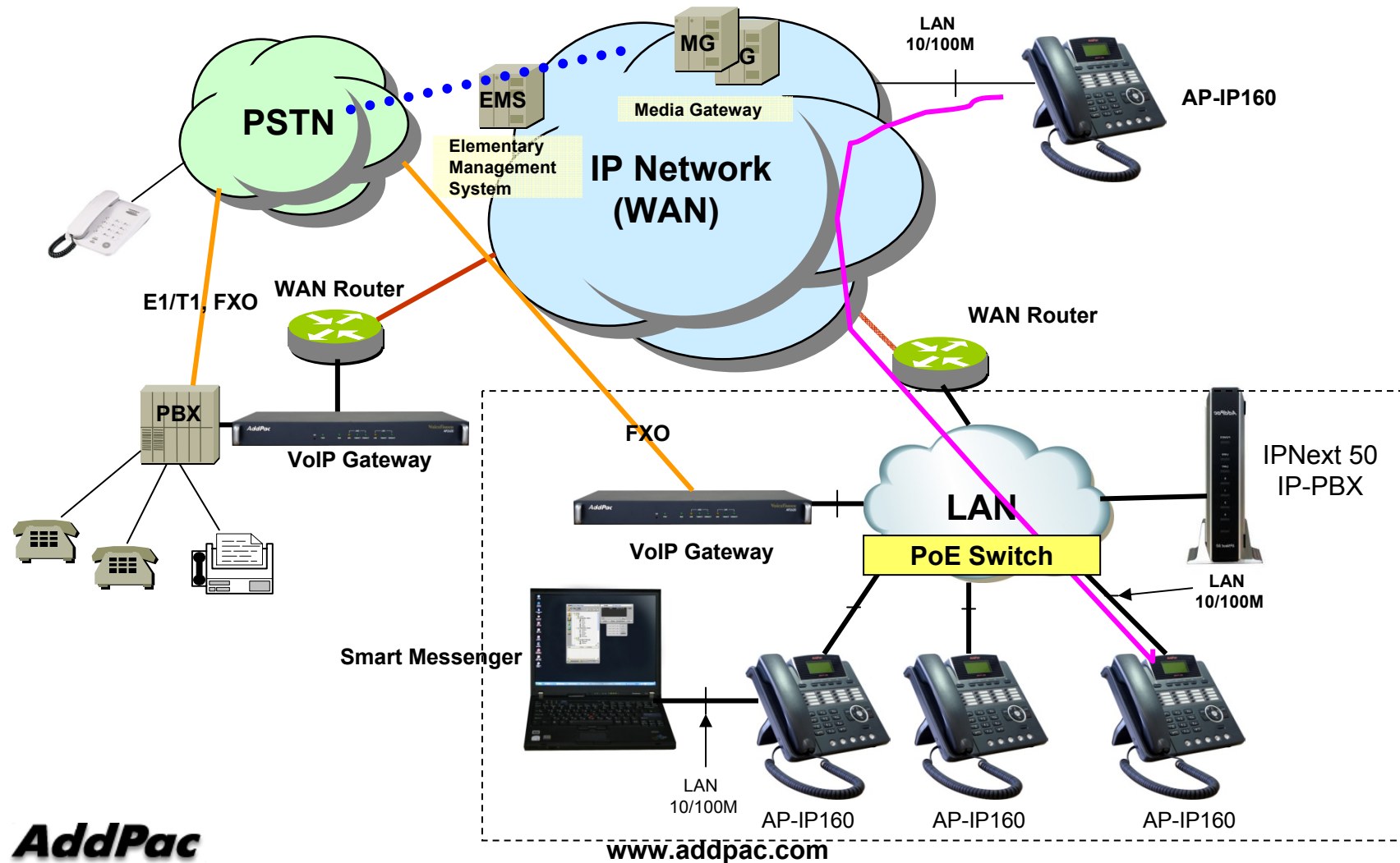
## SIP based Basic Call Scenario



# IPNext50 “All-in-One” Service

Call Managing Server

## SOHO IP-PBX Application



**AddPac**

# IPNext50 “All-in-One” Service

## Call Managing Server

- **Signaling Server**

- SIP Application Server, Proxy, Registrar and Location Server (RFC3261)
- Multiple ITSP Trunk with SIP & H.323 Accounts Support
  - IP UA Client Role for Registering to ITSP SIP Server
  - H.323 Gatekeeper Client Role for Registering to ITSP H.323 Gatekeeper Server

- **IVR & Auto Attendant**

- Default Auto Attendant Support
- Interactive Voice Response (IVR)
  - Provides with GUI-based Smart IVR Scenario Editor
  - Upload/Download Scenario by Smart IVR Scenario Editor
  - Supports Multiple Concurrent Scenarios
  - Supports Recordable IVR Prompts

- **Voice Mail**

- Support Voice Mail with IVR
- Access from Remote Site via Trunk Support
- Voice Mail Notification Support

# IPNext50 “All-in-One” Service

## Call Managing Server

- **Number & Call Routing**

- Trunk Hunting by Preference or Sequential
- Call Hunting by Preference, Simultaneous, Random
- Call Hunting by Chained Hunting Group
- Partition for Address Grading
- Call Class for Call Access Control
- Number Translation Rule for Inbound/Outbound Call
- Centrex with Prefix Support
- Multiple Shared Devices with One Number
- Multiple Numbers on One Device
- Individual Call Park within Park Number Pool
- Group Call Park within a Group or Other Group
- Call Pickup of Ringing Call of Same Group or Other Group
- Call Pickup of Parked Call
- Call Transfer - Blind, Consult
- Call Forwarding - Unconditional, Busy, No Answer, Voice Mail
- Call Waiting
- Call Swaping
- Call Hold

# IPNext50 “All-in-One” Service

## Call Managing Server

- **IP-PBX Advanced Features with AddPac IP Phones**

- Multiple Call Handling with Call Status and Calling Line Number and Name
- Plug and Play with Auto Discovery Function
- Softkey Map Download and Control
- Time and Date Setting
- Voice Mail List View
- Parked Call List View
- Call Forward Setting
- Recent Call List View
- Calling Number and Name Identification
- Individual Call Park within Park Number Pool by Softkey
- Group Call Park within a Group or Other Group by Softkey
- Call Pickup of Ringing Call of Same Group or Other Group by Softkey
- Call Pickup of Parked Call by Softkey
- Call Transfer - Blind, Consult by Softkey
- Call Waiting Indication
- Call Swaping by Softkey
- Call Hold by SoftKey
- Conference Control

# IPNext50 “All-in-One” Service

## Call Managing Server

- **User & Device Management**
  - LDAP (Light weight Directory Access Protocol) Support
    - Supports Hierarchical Organization
  - Auto Discovery of IP Phones & Video Phones
  - Monitoring Status of Phones
- **Miscellaneous\***
  - Distinctive Ring by Calling User
  - Auto Config & Upgrade
  - Intercom
  - Personal Directory
  - Downloadable Ring
  - Do not Disturb



# IPNext50 “All-in-One” Service

## Call Managing Server

- **Conference**

- G.711, G.726 (4-party Conference, 2 session)
- Ad-hoc Conference
- Dial-Out Conference
- Meet-me Conference
- Multiple External MCU support( Video, Audio, etc) : AddPac AP-MC1000, etc
- Conference Chair and Participants Management

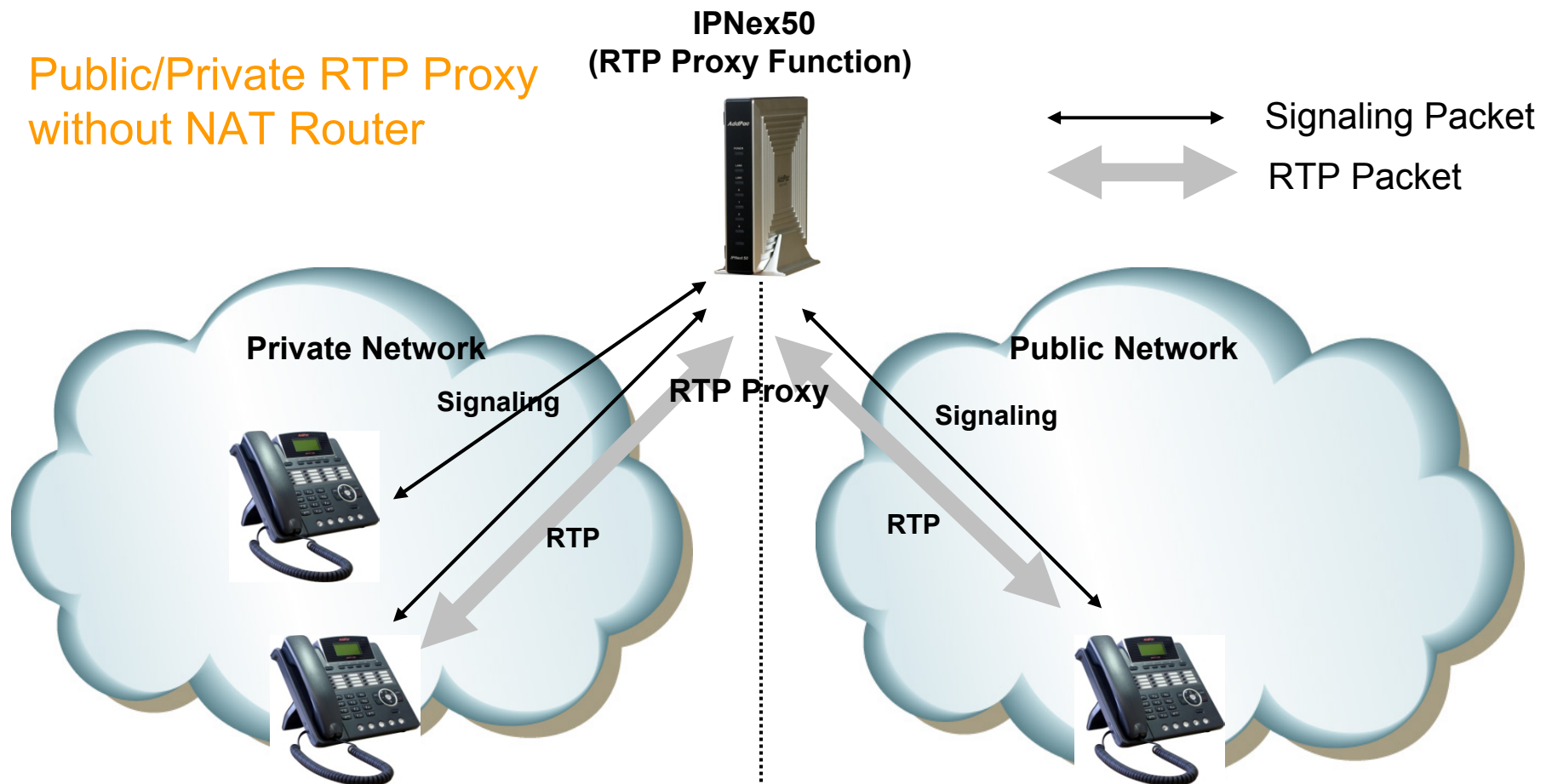
- **Music & Announcement**

- Music on Hold
- Replaceable Announcements
- Dialing Music / Tone Service

# IPNext50 “All-in-One” Service

RTP Proxy Server

Public/Private RTP Proxy  
without NAT Router

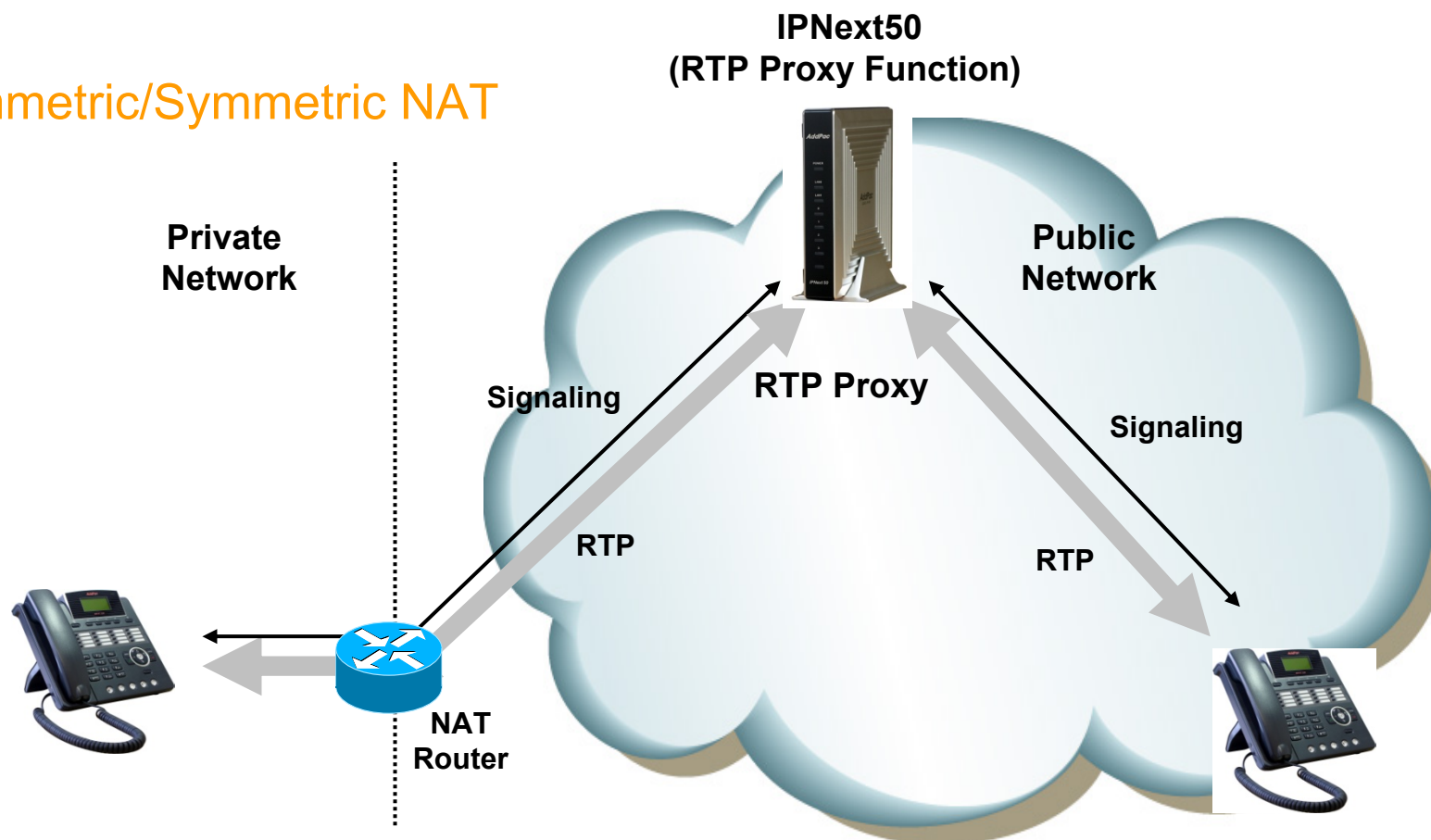


- Located between public and private network
- IPNext50(Call manager + RTP proxy) has public and private address
- IPNext50 determine that the call is internal or external

# IPNext50 “All-in-One” Service

RTP Proxy Server

## Asymmetric/Symmetric NAT

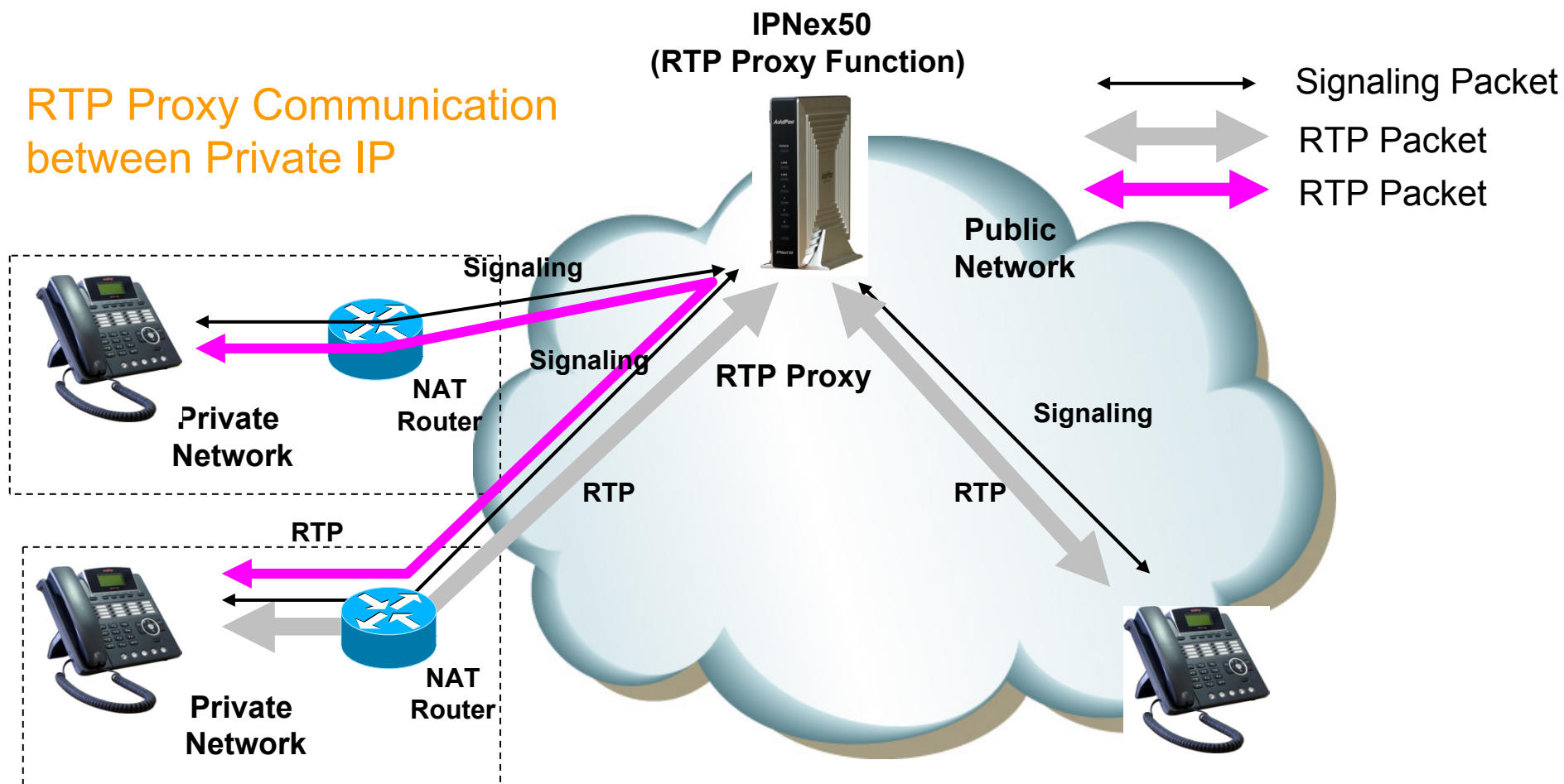


- Located in public network
- RTP Proxy has single public address
- Auto detect for asymmetric NAT via incoming RTP packet

# IPNex50 “All-in-One” Service

RTP Proxy Server

## RTP Proxy Communication between Private IP



- Located in public network
- RTP Proxy has single public address
- Auto detect for asymmetric NAT via incoming RTP packet

# IPNext50 “All-in-One” Service

## Presence Server

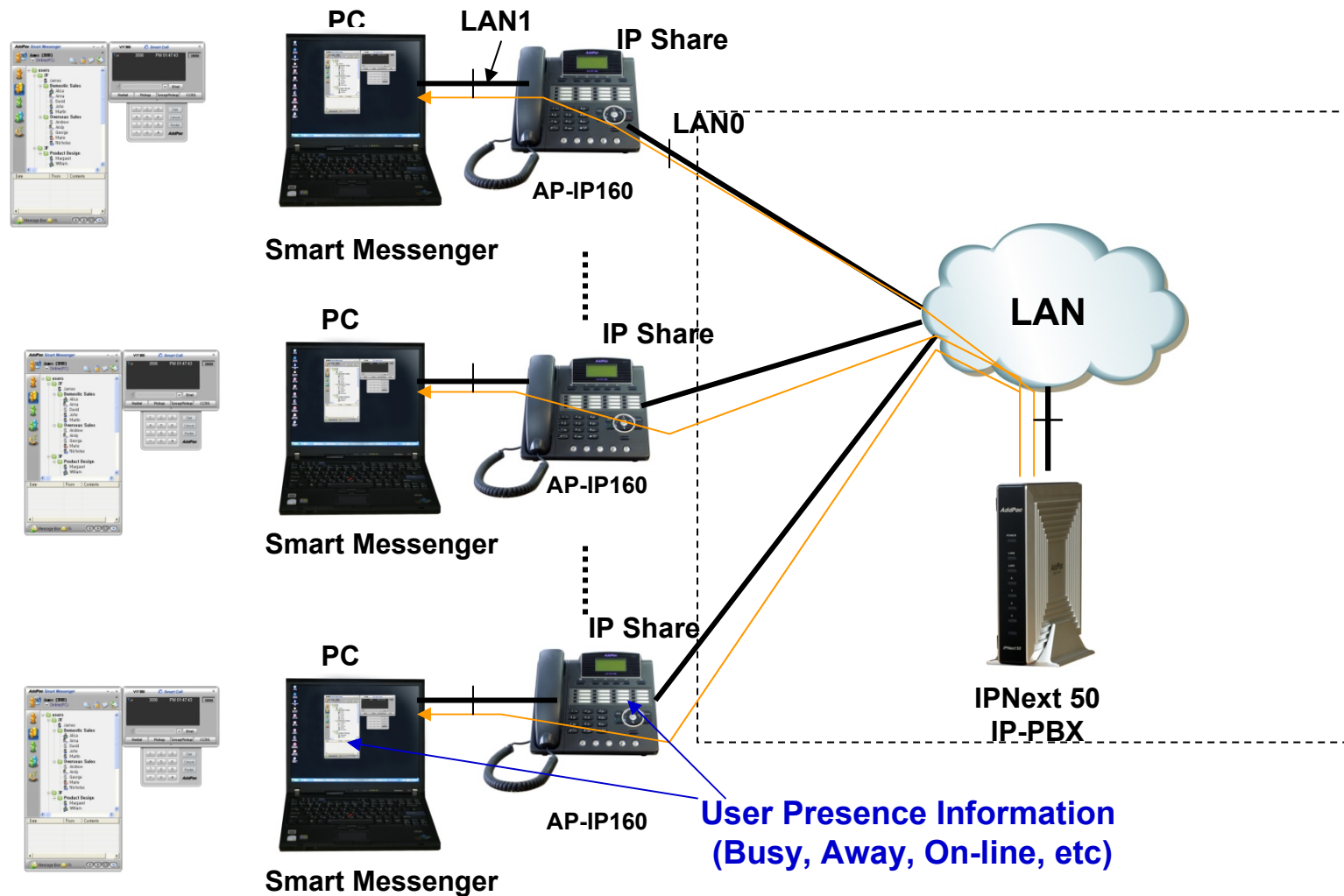
- **Smart Messenger Program**

- PC based MS-Window Program
- Support Messenger Service
- Support Various Address Book
- Support User Presence Information (Busy, Away, On-line, etc)
- Support User Search Feature
- Interoperation with Address Book and Smart Phone
- Support Smart Phone Control and Setup
  - Call Control and Forward Setup
- Support Unified Message Box
  - Voice Mail Box
  - Short Message Box



# IPNext50 “All-in-One” Service

## Presence Server





# Thank you!

**AddPac Technology Co., Ltd.**  
Sales and Marketing

Phone +82.2.568.3848 (KOREA)

FAX +82.2.568.3847 (KOREA)

E-mail [sales@addpac.com](mailto:sales@addpac.com)