

Hardware Specifications

Main Chassis	High Solidity ABS Chassis
CPU	High Performance RISC Processor
Memory	4MB Flash Memory 16MB SDRAM Main Memory
Network Interface	1-port 10/100Mbps Ethernet (LAN 0) for WAN Interface 1-port 10/100Mbps Ethernet (LAN 1) for LAN Interface
Speed-Dialing Key	60 Key Button (3 Column x 20 Row)
User Presence LAMP	Button with User Presence Indication LED
Operation Environment	Temperature 0℃ ~ +45℃(operating), -40℃ ~ +85℃ (storage), Humidity 5% ~ 95%
Power Supply	AC110~220VAC 50/60Hz Free Voltage, 5V 2Amp.
Power Switch	Power ON/OFF Switch
Power LAMP	Power On Indication LED
PoE	Power over Ethernet : Option
Demension	143mm x 220mm x 38mm (W x D x H)
Weight	0.9 Kg

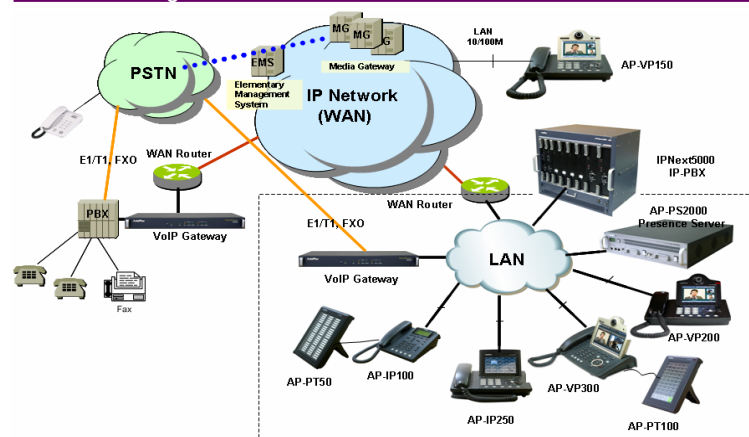
IP Telephony Services (Extended Speed Dialing Box)

Speed Dialing Service	Extended Speed Dialing Service Box for AddPac IP Phones, Video Phones
Speed Dialing Key Button	60 Key Buttons with User Presence LAMP
User Presence Service	User Busy, User Ringing, Idle
User Presence Servers	IP-PBX built-in Presence Server, Independent Large Capacity Presence Server
IP-PBX Interworking	SSCP AddPac Proprietary Protocol
Presence Server Interworking	SSCP AddPac Proprietary Protocol
IP Terminal Interworking	SSCP AddPac Proprietary Protocol
User Registration	Web based Management
User Registration Profile	System Manager build User Profiles
Cascading	Multiple AP-PT50 Terminal Cascading Service Feature
	Ex: Single Terminal : 60 Speed-Dialing Service
	Two Terminals : 120 Speed-Dialing Service

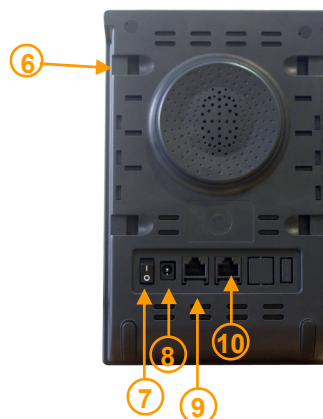
WAN, IP Routing and Other Features

WAN Protocol	Point-to-Point Protocol (PPPoE) for ADSL
IP Routing	IPv4 Static and IEEE 802.1Q VLAN Routing
Network Management	Standard SNMP Agent (MIB v2) Support, Telnet, Web Based Management, Remote Firmware (APOS) Upgrade via FTP/TFTP Support
Security Features	IP Packet Filtering, Access List, Access Control and Data Protections, Enable/Disable for Specific Protocols
Operation & Management	Multi-level User Account Management, Auto-disconnect for Telnet/Console Sessions, PPP User Authentication Support (PAP/CHAP)
Other Features	Performance Analyzing (Process, CPU, Interface), Configuration Backup and Restore for APOS Management, Debugging and Diagnosis Features, System Booting/Rebooting through Watch-Dog, Data Logging Features, IP Traffic Statistics through Accounting Support
	DHCP Server and Relay, Network Address Translation (NAT), Port Address Translation (PAT), IEEE Standard Transparent Bridging (Spanning Tree Bridging and Concurrent Routing Bridging Protocol), Network Time Protocol (NTP), Cisco Style Command Line Interface (CLI), DNS Proxy, UPnP, MAC Address Filter Service etc.

Network Diagram



Speed Dialing Key, Network Interface of AP-PT50



- Speed-Dial Key
- User Presence LAMP
- Name Plate
- Power Indication LAMP
- Stand
- Connector Hole for Cascading

- External Power Input (DC5V)
- Power ON/OFF Switch
- LAN0 (Fast Ethernet)
- LAN1 (Fast Ethernet)